

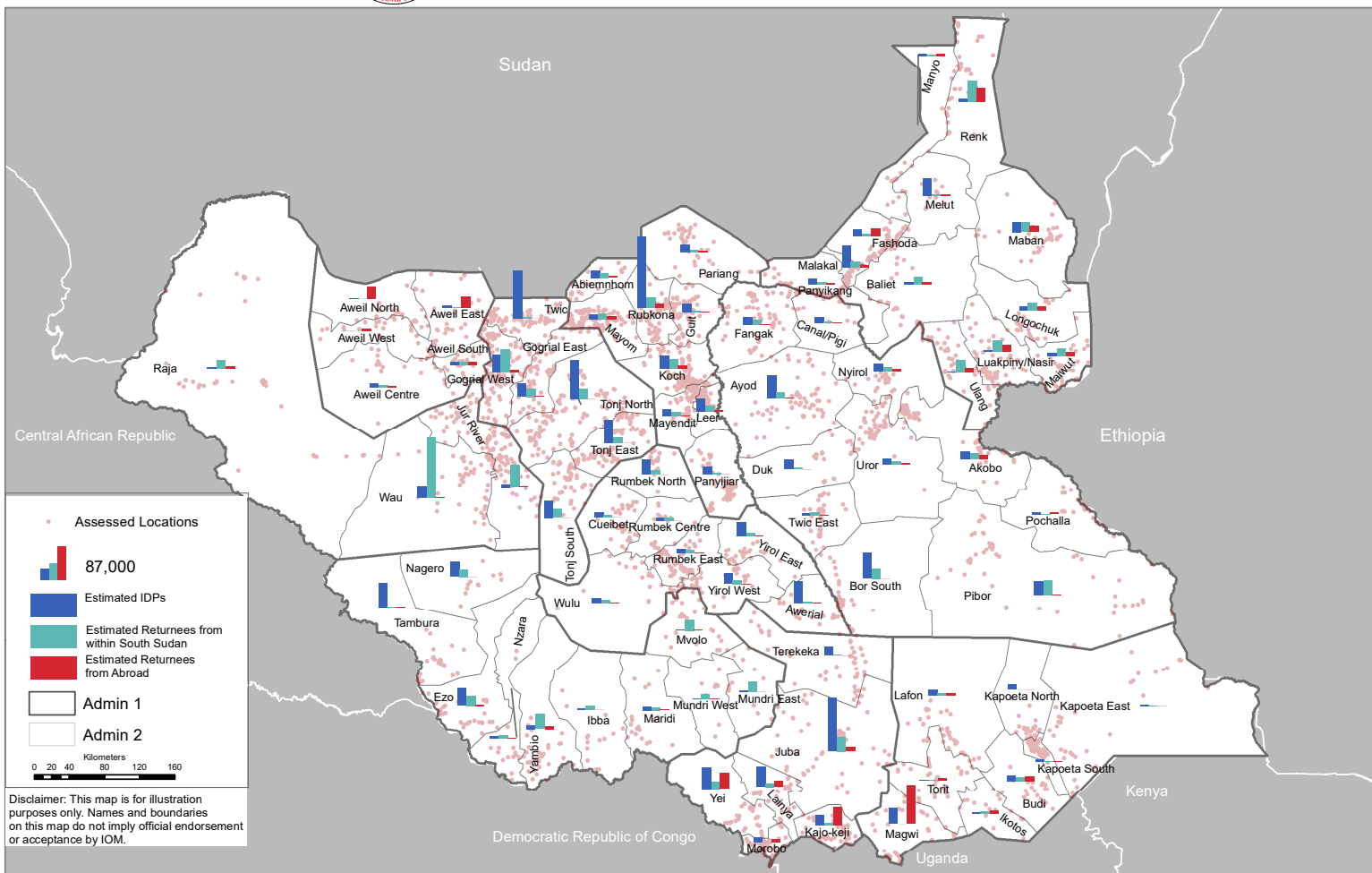


IDP and Returnee ATLAS as of December 2021

Mobility Tracking Round 12, South Sudan

Data Collection: October-December 2021

Published: 2022

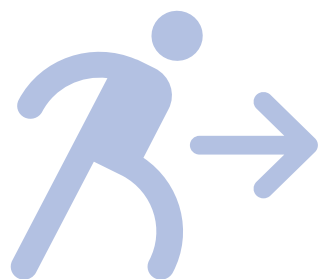


Mobility Tracking supports the humanitarian response in South Sudan by **providing a unified and comprehensive system to collect and disseminate data on the numbers, mobility history and needs of IDPs and Returnees on a nationwide scale**. Data collection takes place at a granular level and is repeated at regular intervals to ensure accurate and up-to-date information.

IOM DTM mapped a total of 2,229,657 IDPs (including 7% previously displaced abroad) and 1,924,368 returnees (including 33% from abroad) in 3,654 locations across South Sudan as of December 2021.

Data collection for round twelve took place from November to December 2021 following round eleven which took place from July to September 2021. DTM assessed 174 displacement sites and 3,480 villages/neighborhoods. Assessed locations were spread across 508 sub-areas (locally known as payams) at the third administrative level in every county (78) of all the 10 States.

PERIOD: JANUARY 2022 COVERAGE: 3,654 LOCATIONS 508 ADMIN 3 (PAYAM) IN ALL 78 COUNTIES



Current IDPs (Displaced between 2014 and December 2021):
2,229,657



Current Returnees (Returned between 2016 and December 2021):
1,924,368



BREAKDOWN OF IDPS AND RETURNEES POPULATION AS OF DECEMBER 2021 BY PERIOD OF ARRIVAL

280,928 IDPs remain displaced since 2014-2015, 96 % due conflict.

- **15 December 2013:** violence erupted in Juba. The fighting was particularly intense in Central Equatoria, Jonglei, Unity, Upper Nile and Lakes states.
 - **23 January 2014:** An agreement to cease hostilities was signed by both parties
 - Late January 2014: fighting in Unity State led to the forced displacement of thousands of civilians
 - **August 2015:** the two warring parties reached Agreement on the [Resolution of Conflict in South Sudan \(ARCSS\)](#) facilitated by IGAD.
- Despite the 2015 ARCSS, violence continued in many parts of the country spreading to previously peaceful areas, e.g., Wau and Equatorias.

2014-2015

116,764 IDPs remain displaced since 2018 (pre R-ARCSS). the main reason for displacement are conflict (57%) and communal clashes (32%)

207,275 individuals had returned during this period as of December 2021, of which 29% were previously abroad.

- **June 2018:** Khartoum Declaration of Agreement between parties of the Conflict of South Sudan.
- **August 2018:** signing of a ceasefire and power-sharing agreement.

2018-Pre R-ARCSS

137,130 IDPs remain displaced since 2019. The main reason for displacement are conflict (26%), communal clashes (45%) and natural disasters (24%).

342,373 individuals had returned during this period as of December 2021, of which 28% were previously abroad.

- **May 2019:** The pre-transition period was extended for six months after implementation delays.
- **Since June 2019:** severe floods displaced population in Northern Bahr el Ghazal, Warrap, Lakes, Jonglei, Upper Nile, Unity, Eastern Equatoria and Central Equatoria States ([DTM](#), [OCHA](#))

2019

2016-2017

223,318 IDPs remain displaced during this period as of December 2021, by conflict (83%) and communal clashes (10%).

136,228 individuals had returned during this period as of December 2021, of which 36% were previously displaced abroad South Sudan.

July 2016: violence broke out between government forces and opposition factions in Juba.

2017 and 2018: a series of cease-fires were negotiated and subsequently violated. During this period witnessed increased number of IDPs in the Equatoria Region, is attributed to a face-off between the center's forces and rebels, as well as the ceasefire violations reported in Jonglei.

2018- Post R-ARCSS

109,926 IDPs remain displaced since 2018 (pre R-ARCSS). the main reason for displacement are conflict (46%) and communal clashes (43%)

272,572 individuals had returned during this period as of December 2021, of which 29% were previously abroad.

- **September 2018:** Signing of the Revitalized Agreement on the Resolution of Conflict in South Sudan, officially ending the civil war ([IGAD](#)).

2020

329,246 IDPs remain displaced since 2020 which is attributed to displacement are conflict (12%), communal clashes (27%) and natural disasters (57%).

329,659 individuals had returned during this period as of December 2021, of which 32% were previously abroad.

- **February 2020:** The Transitional Government of National Unity was formed.
- **September 2020:** UNMISS started retiring its troops and police from Protection of Civilians sites in Bor and Wau.
- **Since June 2020:** people were displaced by flooding from locations in Jonglei, Central Equatoria, Warrap, Unity and Northern Bahr el Ghazal ([DTM](#), [OCHA](#))

2021

973,097 IDPs remain displaced since 2020 which is attributed to displacement are conflict (27%), communal clashes (15%) and natural disasters (56%).

614,895 individuals had returned during this period as of December 2021, of which 36% were previously abroad.

- **During the first months** of the year, populations continued being displaced due to the flooding during 2020.
- **Since May 2021** severe floods displaced populations along the Nile with Jonglei, Unity and Upper Nile States being the worst affected areas ([DTM](#), [OCHA](#)).

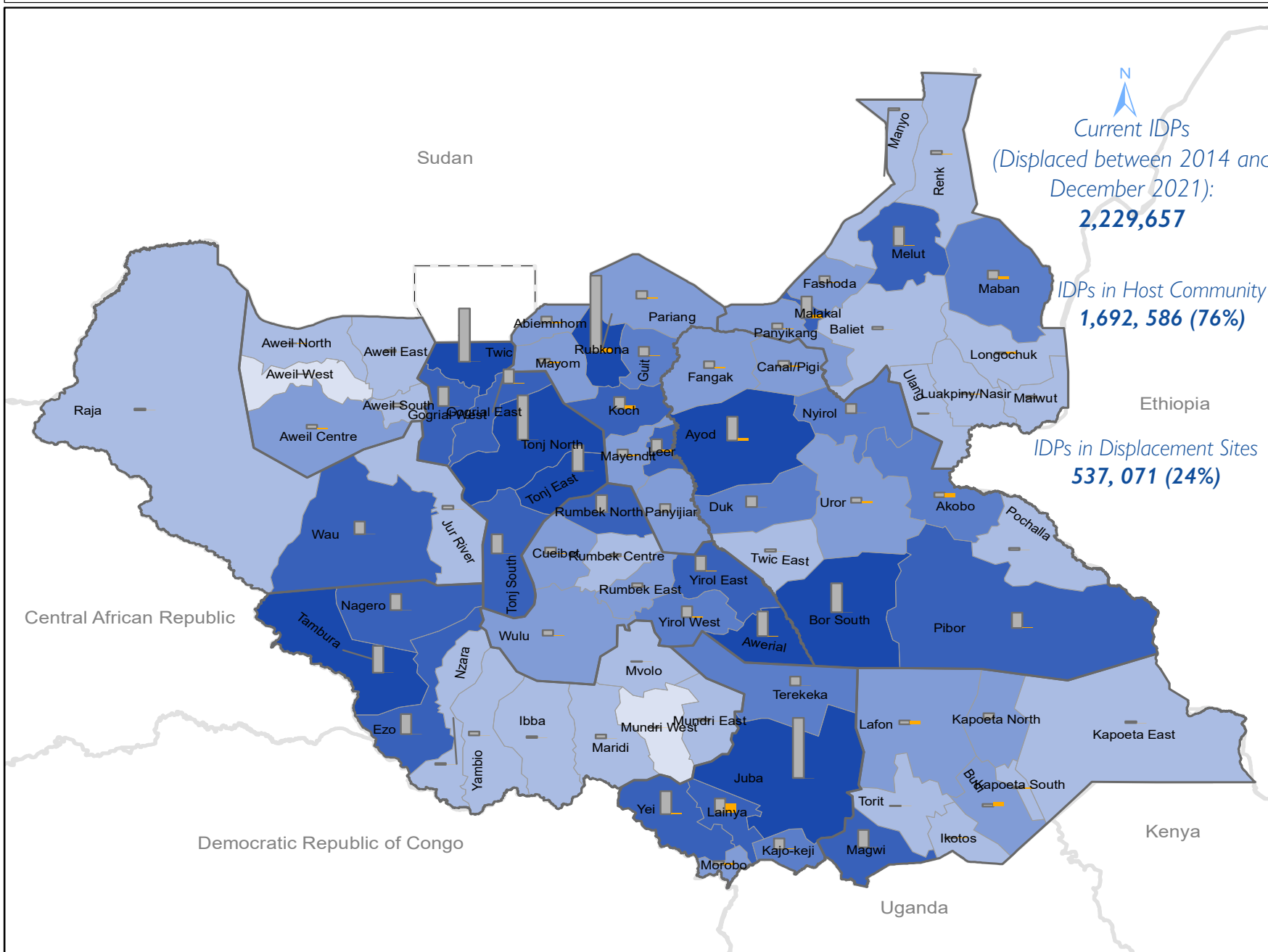


DTM
IOM DISPLACEMENT
TRACKING MATRIX
SOUTH SUDAN



IDPs by County as of December 2021

Displacement Tracking Matrix Mobility Tracking Round 12



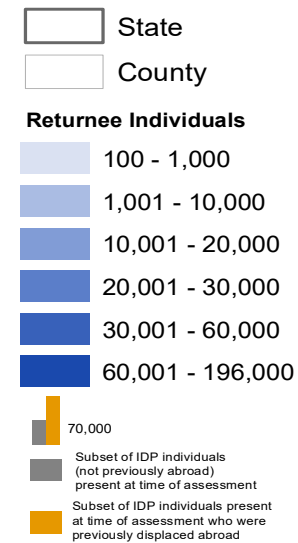
Current IDPs
(Displaced between 2014 and
December 2021):
2,229,657

IDPs in Host Community
1,692, 586 (76%)

IDPs in Displacement Sites
537, 071 (24%)

South Sudan

Mobility Tracking
Round 12, December 2021



10 counties accounting
for most IDPs as of
December 2021

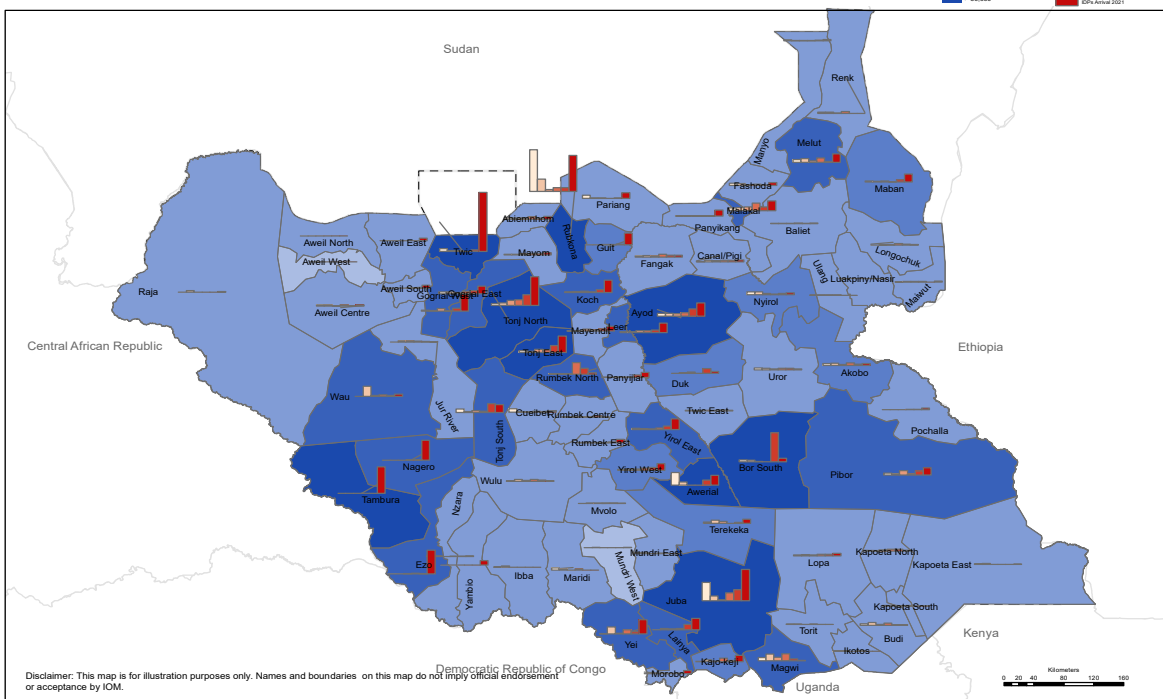
County	Individuals
Rubkona	195,678
Juba	146,199
Twic	129,824
Tonj North	107,292
Bor South	70,965
Tambura	65,984
Ayod	63,312
Tonj East	62,396
Awerial	60,618
Malakal	59,922

Disclaimer: This map is for illustration purposes only. Names and boundaries on this map do not imply official endorsement or acceptance by IOM.





South Sudan Mobility Tracking Round 12, December 2021 Subset of IDPs who arrived from within South Sudan as of December 2021

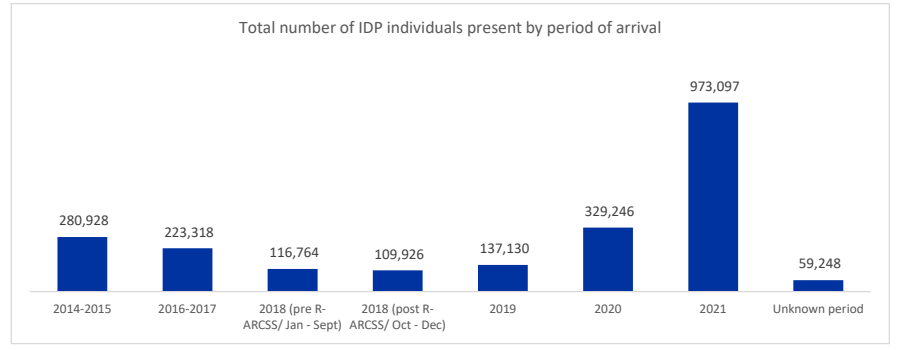


Disclaimer: This map is for illustration purposes only. Names and boundaries on this map do not imply official endorsement or acceptance by IOM.

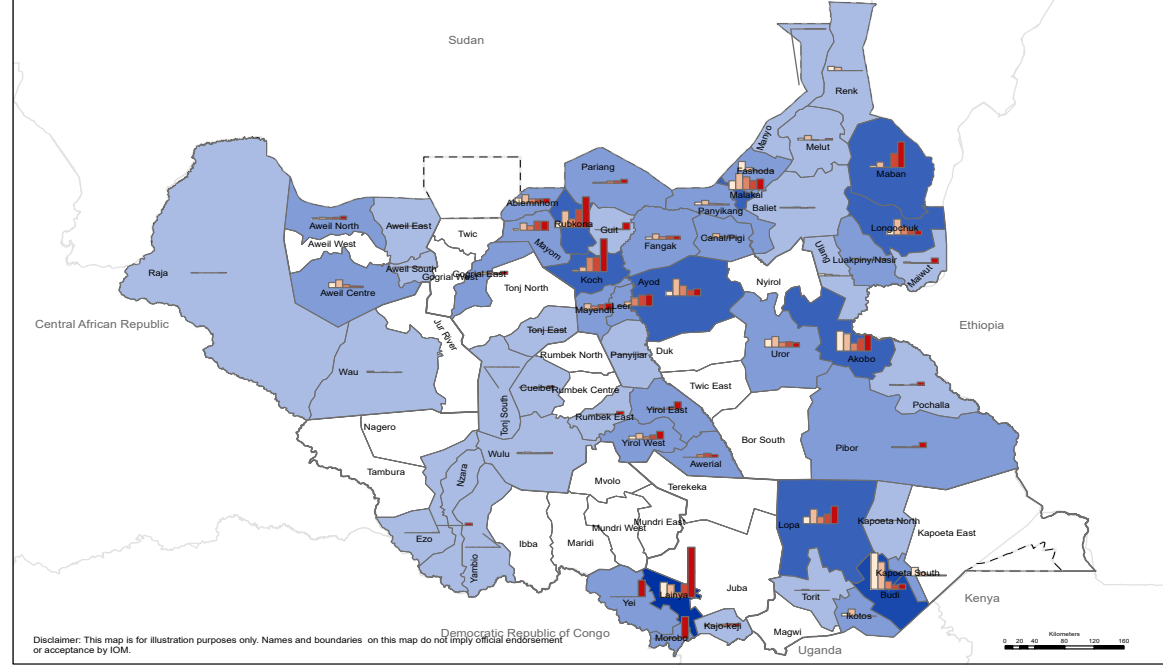
10 counties accounting for most IDP arrivals in 2021 (Jan-December 2021)

Accounting for 55% of the caseload displaced in this period

Twic	115854	Ezo	46257
Rubkona	70678	Nagero	38587
Juba	61437	Gogrial West	32461
Tonj North	56451	Tonj East	31795
Tambura	52406	Yei	27733

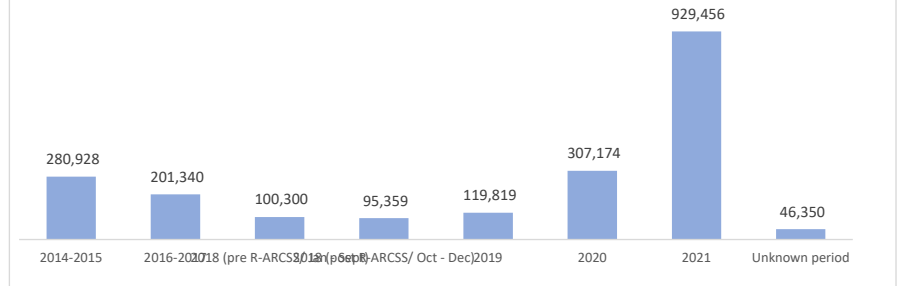


South Sudan Mobility Tracking Round 12, December 2021 Subset of IDPs who arrived from abroad South Sudan as of December 2021

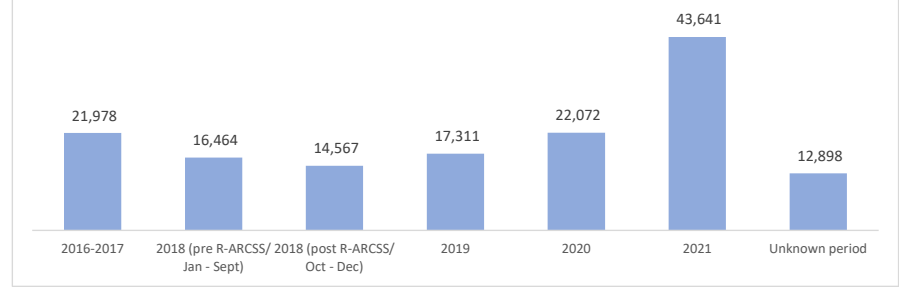


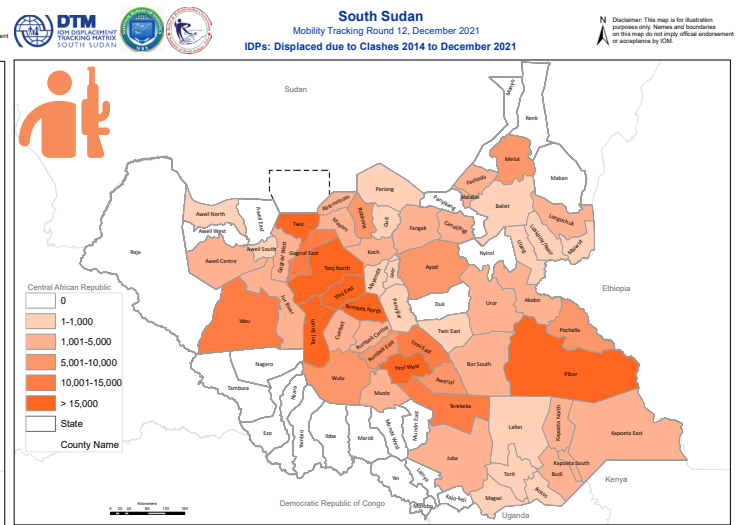
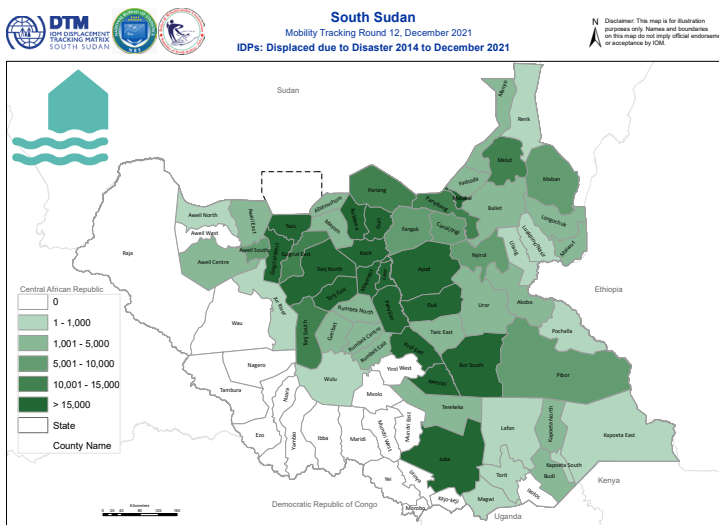
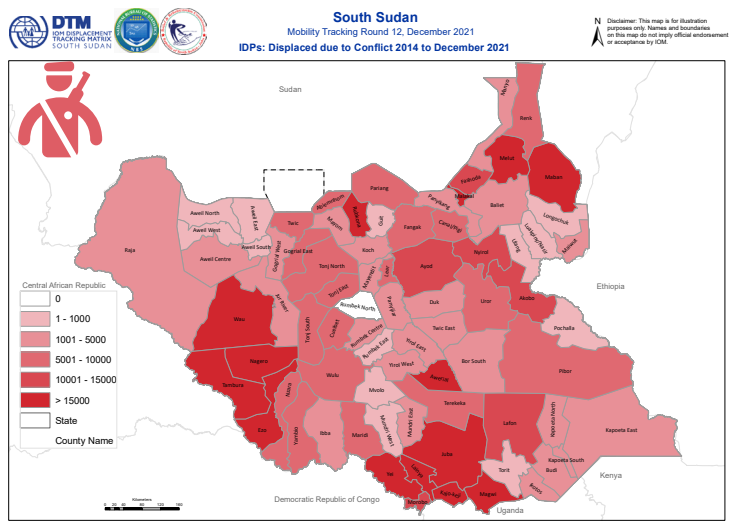
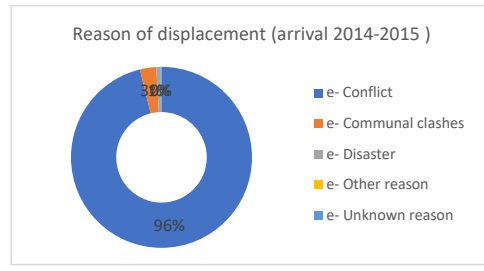
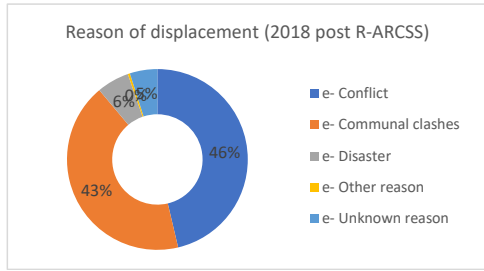
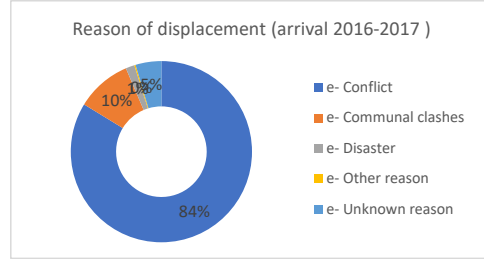
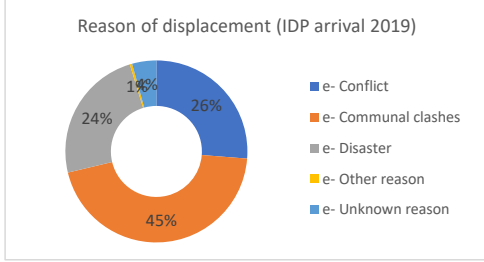
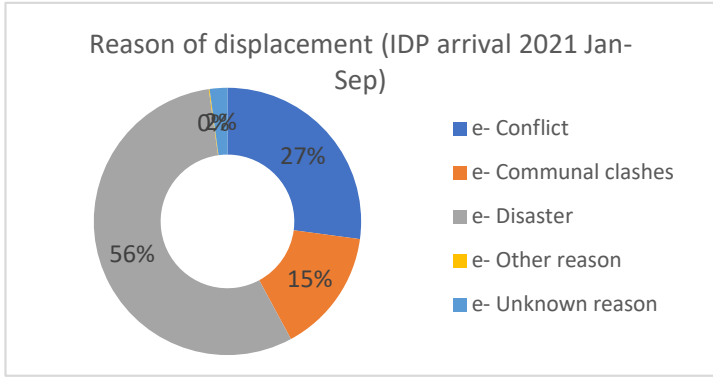
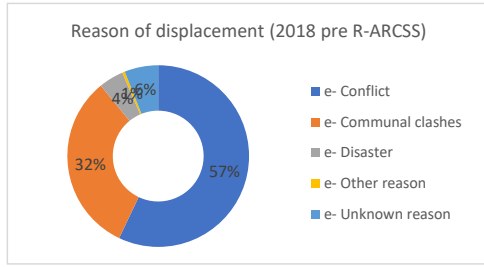
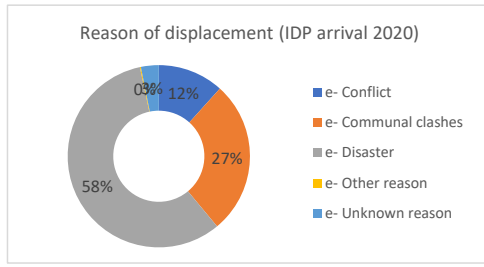
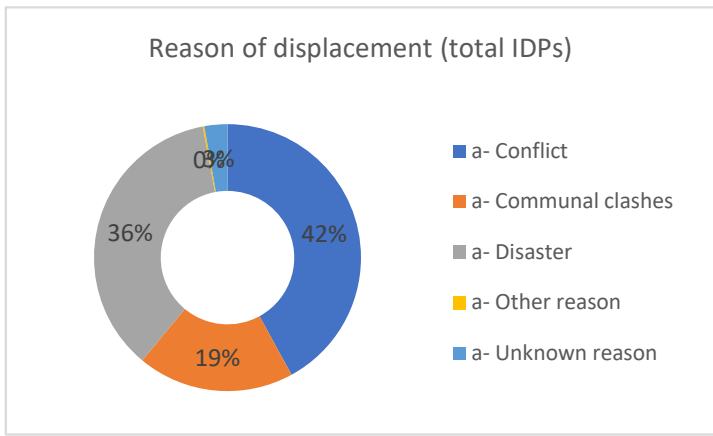
Disclaimer: This map is for illustration purposes only. Names and boundaries on this map do not imply official endorsement or acceptance by IOM.

Subset of IDPs previously displaced within South Sudan by period of arrival at current location



Subset of IDP individuals present at time of assessment who were previously displaced abroad by period of arrival





Note: The maps contains layers for each recorded time period. These layers can be accessed in Adobe Acrobat's "Layers" pane under the folder "Conflict"/"Disaster"/"Clashes". Selecting and unselecting individual layers allows user to visualize displacement by time period



South Sudan

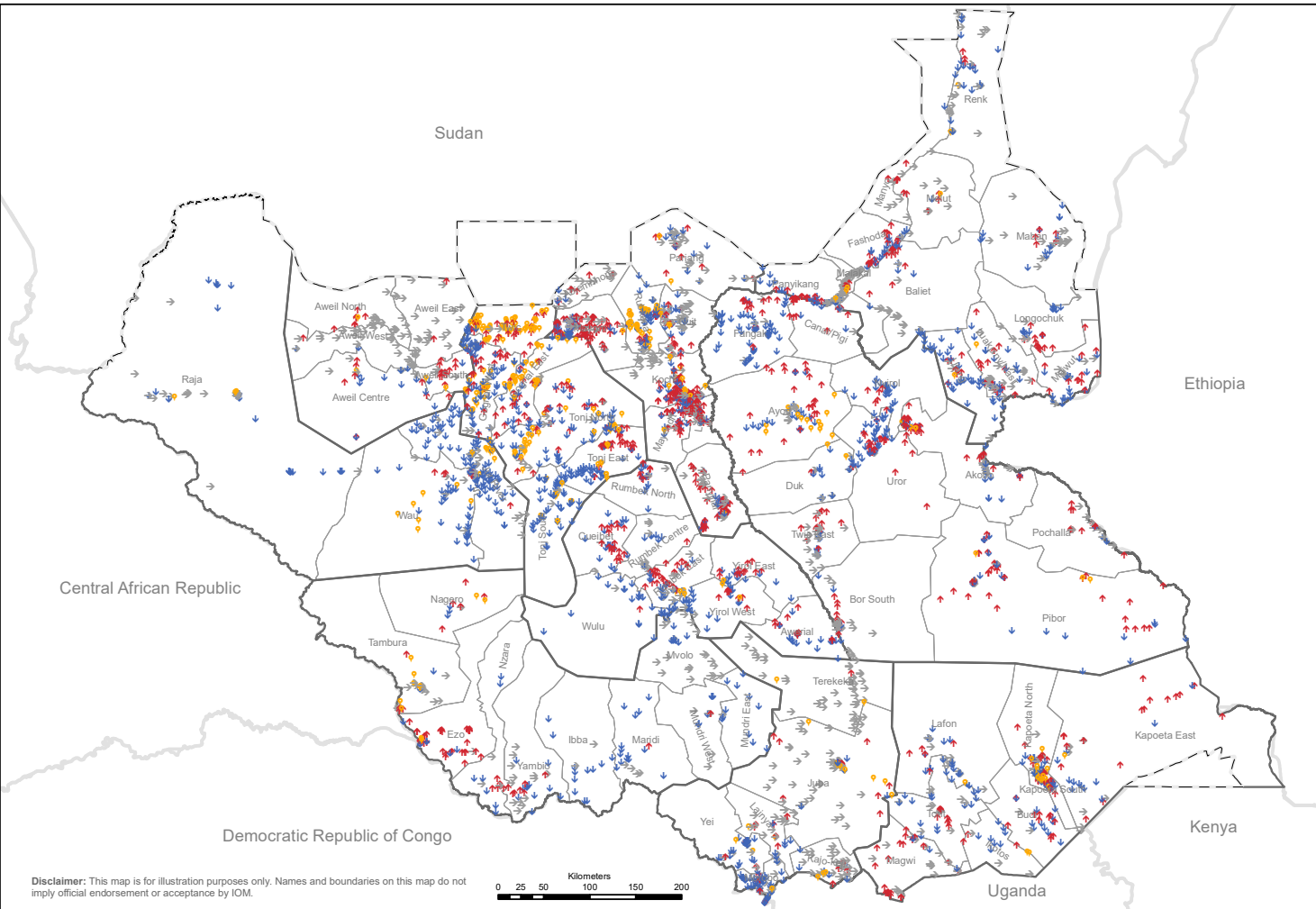
Mobility Tracking Round 12, December 2021

IDPs Compared Locations R12-R11

State
 County

Compared Location
↓ Decreased
↑ Increased
→ New Location
→ No change

N
↑



Disclaimer: This map is for illustration purposes only. Names and boundaries on this map do not imply official endorsement or acceptance by IOM.



Counties with the most significant net decrease in the number of IDPs were:

- Twic (-22,368)
- Tambura (-18,220)
- Nagero (-17,568)
- Ezo (-16,593)
- Koch (-16,593)

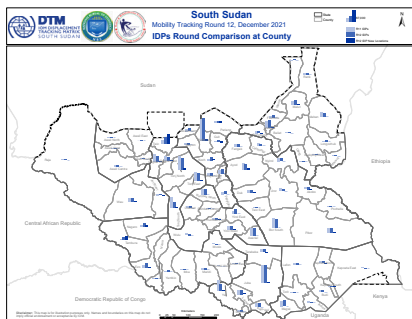
The main counties witnessing net increases in the number of IDPs since round 11 were:

- Tonj South (+37,413)
- Yei (+32,536)
- Gogrial West (+17,997)
- Tonj North (+16,216)
- Gogrial East (+10,275)

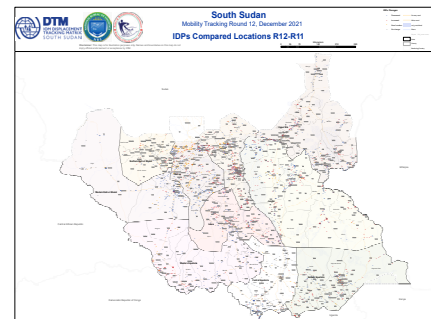
The counties with the highest numbers of IDPs in new locations are:

- Twic (77,850)
- Tambura (28,230)
- Rubkona (15,922)
- Tonj North (15,382)
- Ayod (15,036)

County Map (A4)



Location Map (A0)





South Sudan

Mobility Tracking Round 12, December 2021

IDPs by current sub areas and by home before displacement

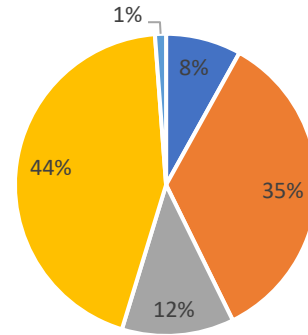


Disclaimer: Disclaimer: This map is for illustration purposes only. Names and boundaries on this map do not imply official endorsement or acceptance by IOM.

IDPs Arrival 2021

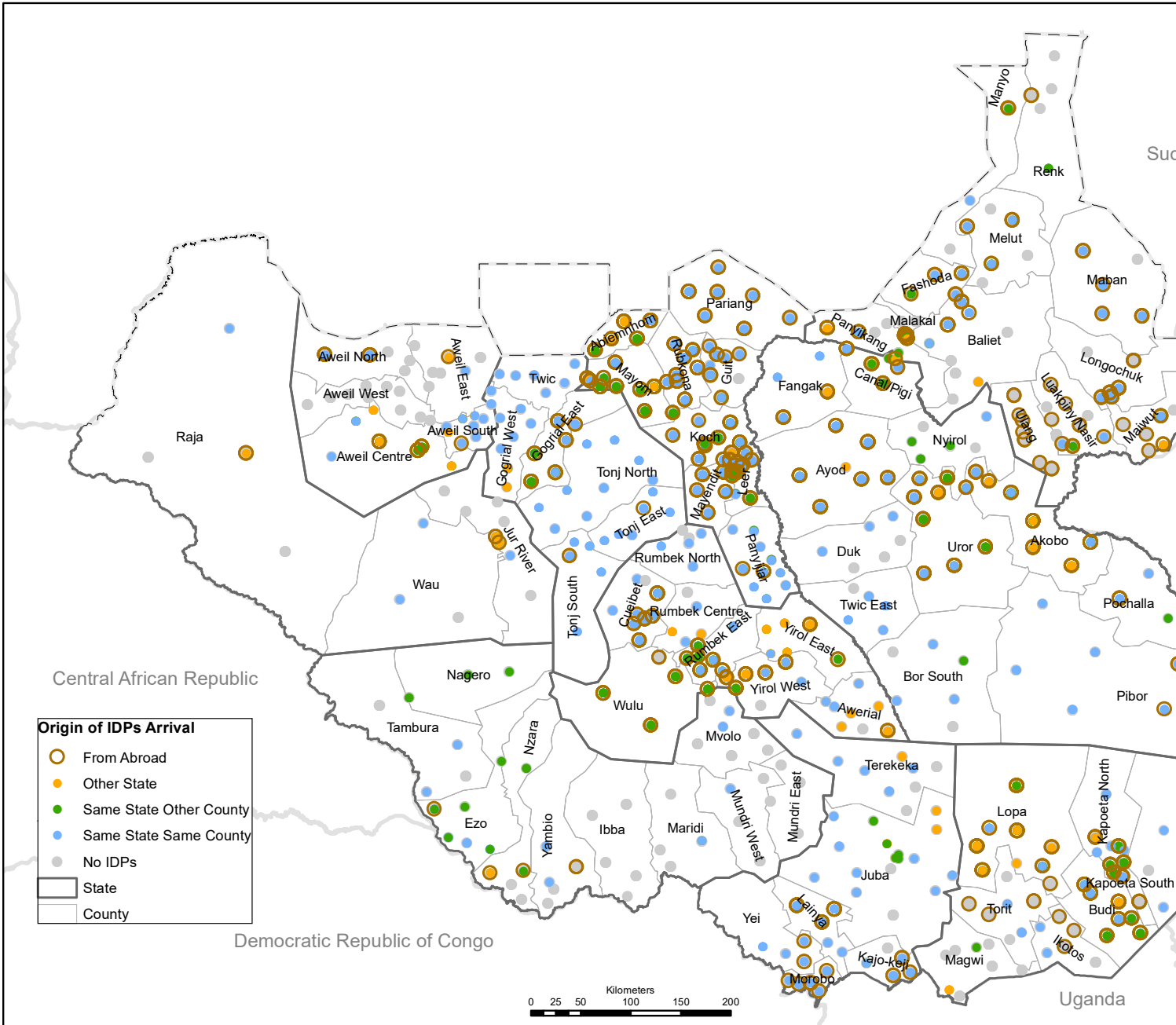
Payams by origin of the IDPs

- Different State / Different County
- n/a (no IDPs arrived)
- Same State / Different County
- Same State / Same County
- Unknown

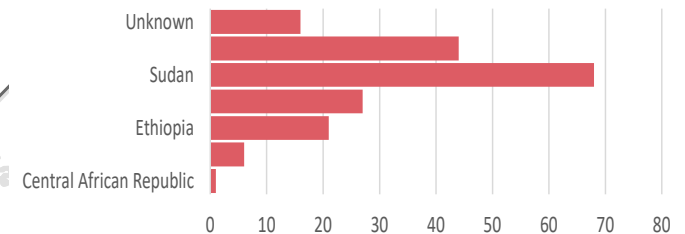


Grand Total	508	100%
Different State / Different County	46	9%
n/a (no IDPs arrived)	132	26%
Same State / Different County	68	13%
Same State / Same County	255	50%
Unknown	7	1%
Abroad	183	36%

- Origin of IDPs Arrival**
- From Abroad
 - Other State
 - Same State Other County
 - Same State Same County
 - No IDPs
- State
 County



Number of payams reporting IDPs previously displaced abroad



Returns by County as of December 2021

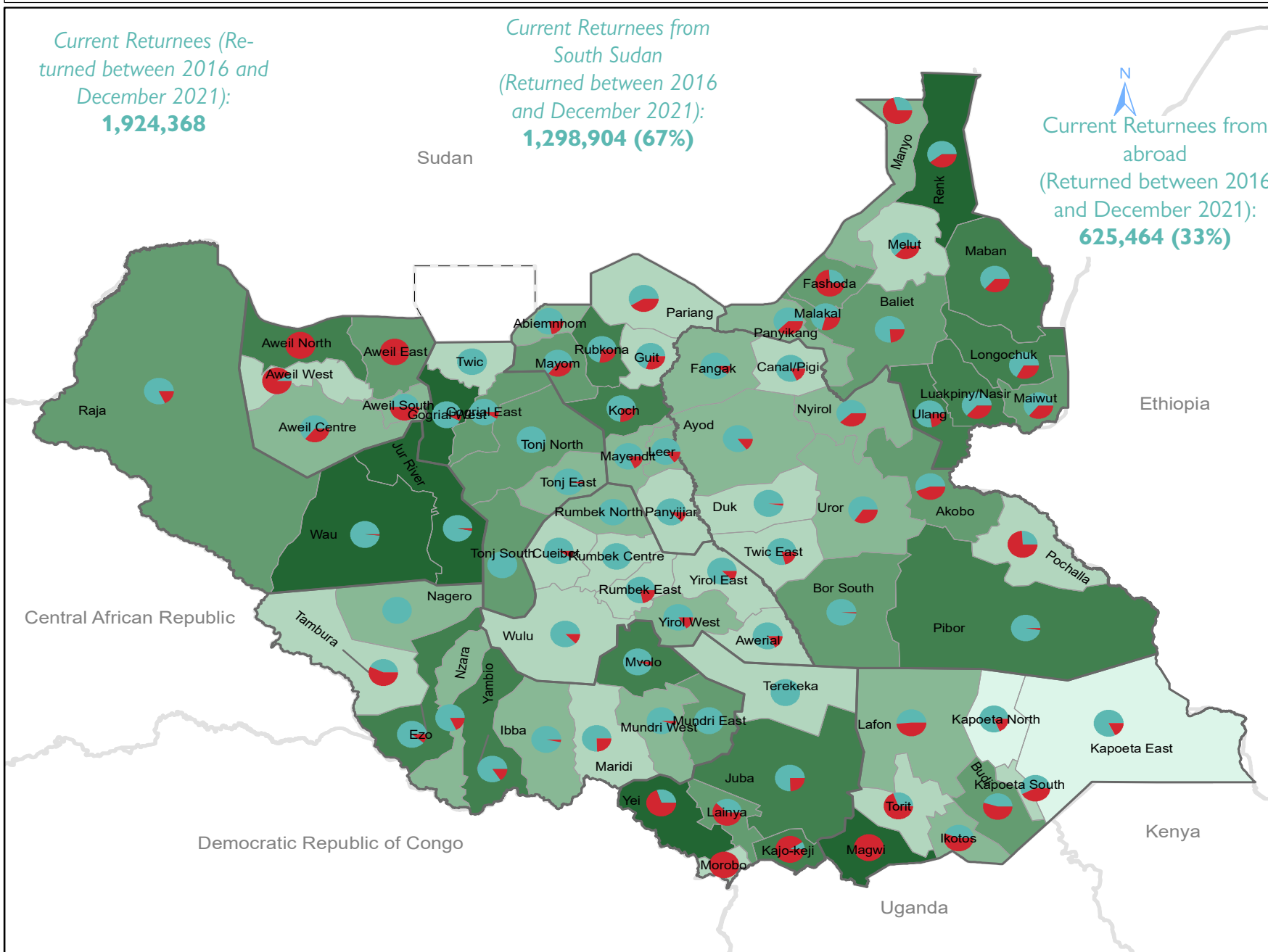
Displacement Tracking Matrix Mobility Tracking Round 12



Current Returnees (Re-
turned between 2016 and
December 2021):
1,924,368

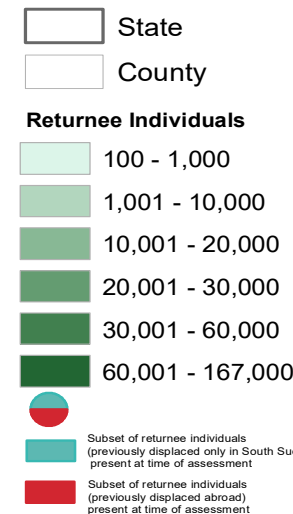
Current Returnees from
South Sudan
(Returned between 2016
and December 2021):
1,298,904 (67%)

Current Returnees from
abroad
(Returned between 2016
and December 2021):
625,464 (33%)



South Sudan

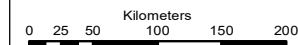
Mobility Tracking
Round 12, December 2021



10 counties accounting for most Returnees as of December 2021

County	Individuals
Wau	166,792
Magwi	104,817
Renk	95,423
Gogrial West	67,364
Jur River	63,627
Yei	62,366
Kajo-Keji	56,994
Juba	52,764
Luakpiny (Nasir)	49,529
Yambio	48,685

Disclaimer: This map is for illustration purposes only. Names and boundaries on this map do not imply official endorsement or acceptance by IOM.

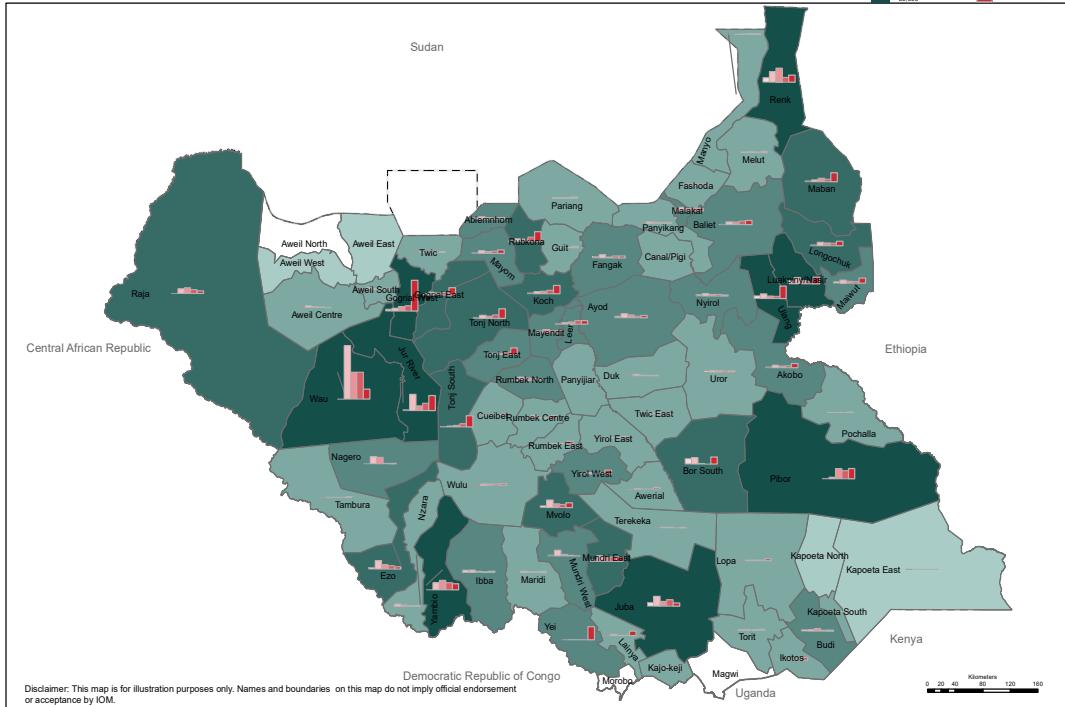




Current Returnees from South Sudan (Returned between 2016 and December 2021): 1,298,904 (67%)



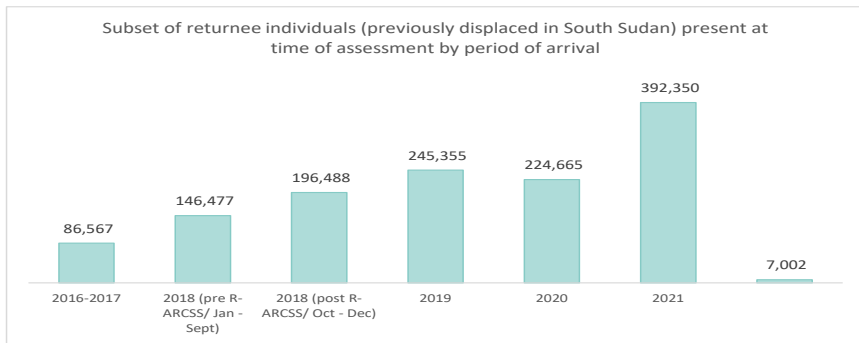
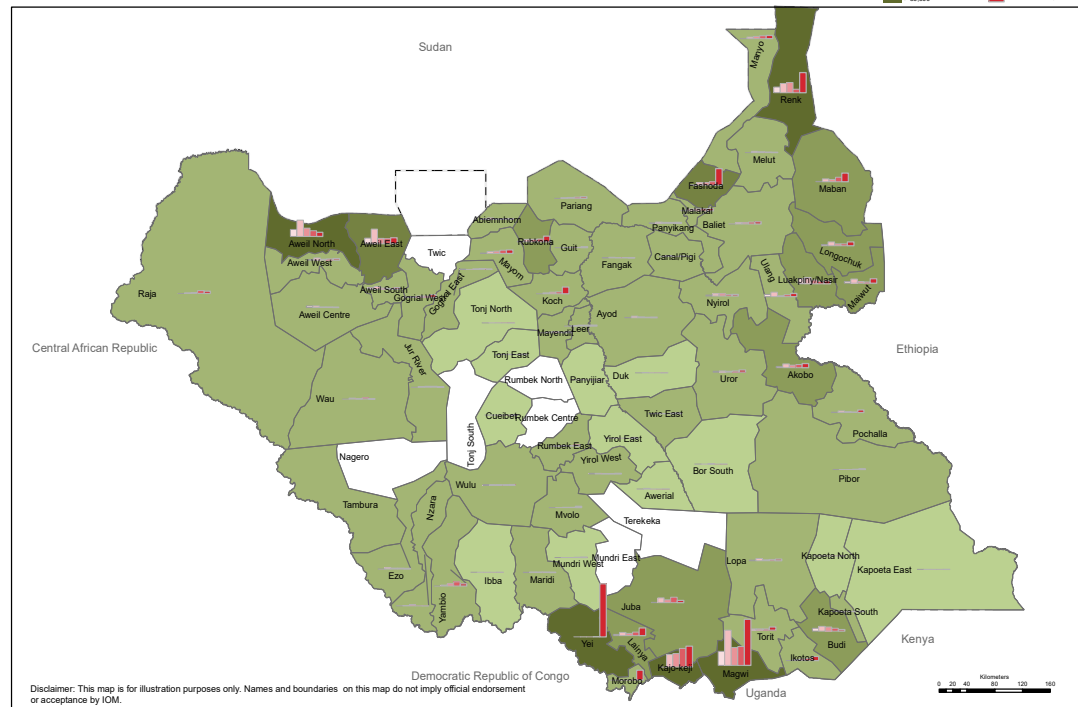
South Sudan
Mobility Tracking Round 12, December 2021
Subset of returnees who arrived from within South Sudan as of December 2021



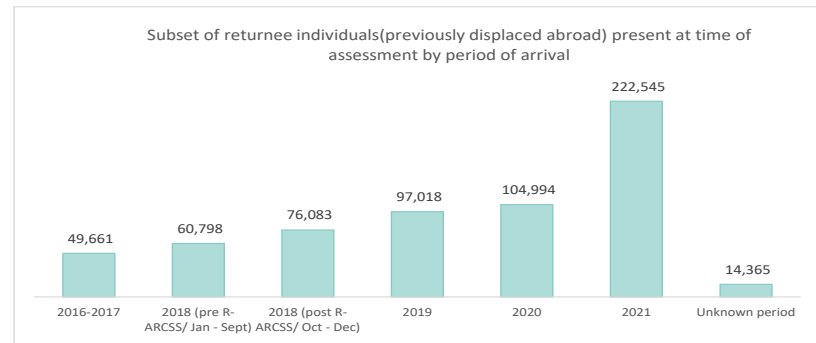
Current Returnees from abroad (Returned between 2016 and December 2021): 625,464 (33%)



South Sudan
Mobility Tracking Round 12, December 2021
Subset of returnees who arrived from abroad South Sudan as of December 2021



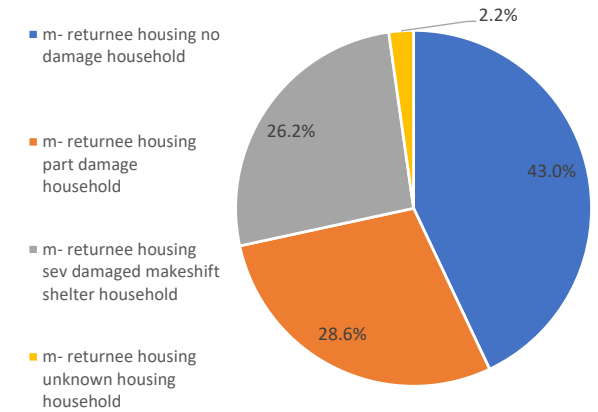
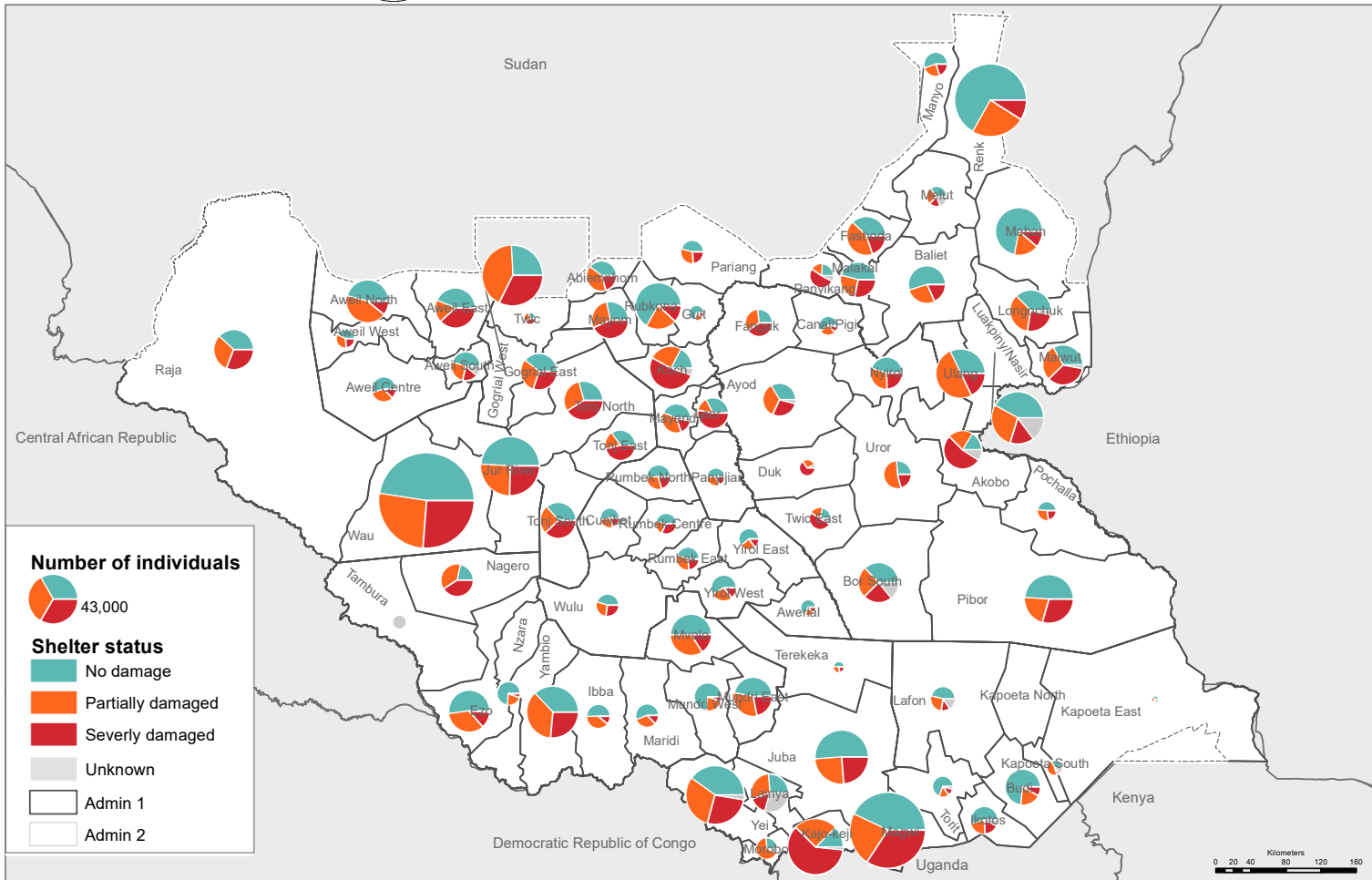
1,058,858 returnees previously displaced in SSD who arrived since 2018 post-R-ARCSS were present at the time of assessment. Of these 392,350 arrived in 2021 (January-December 2021) alone.



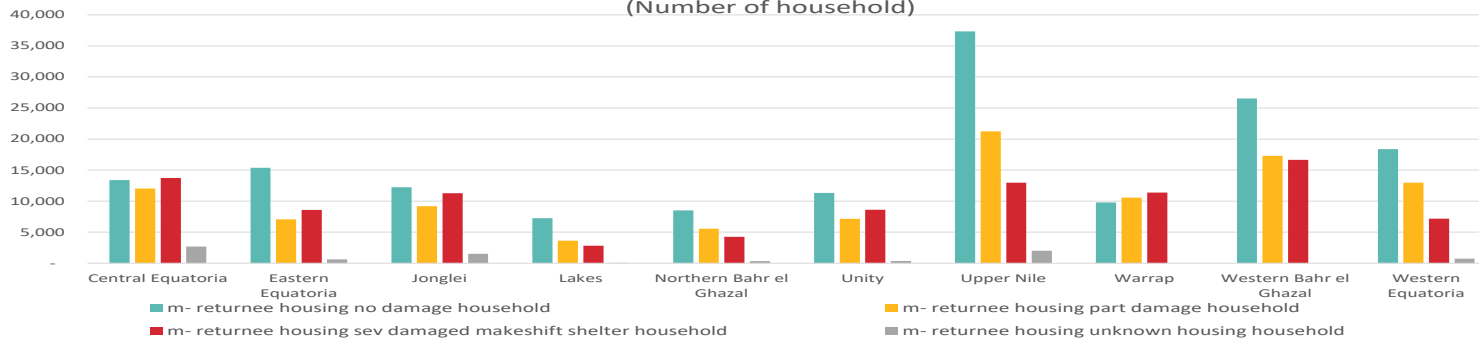
500,640 returnees previously displaced abroad who arrived since 2018 post-R-ARCSS were present at the time of assessment. Of these 222,545 arrived in 2021 (January-December 2021) alone.

South Sudan
Mobility Tracking Round 12, December 2021
Shelter status of Returnees

Disclaimer: This map is for illustration purposes only. Names and boundaries on this map do not imply official endorsement or acceptance by IOM.



Returns shelter status by state
(Number of household)



499,180 (26%) returnees are living in severely damaged makeshift shelters



DTM
IOM DISPLACEMENT
TRACKING MATRIX
SOUTH SUDAN



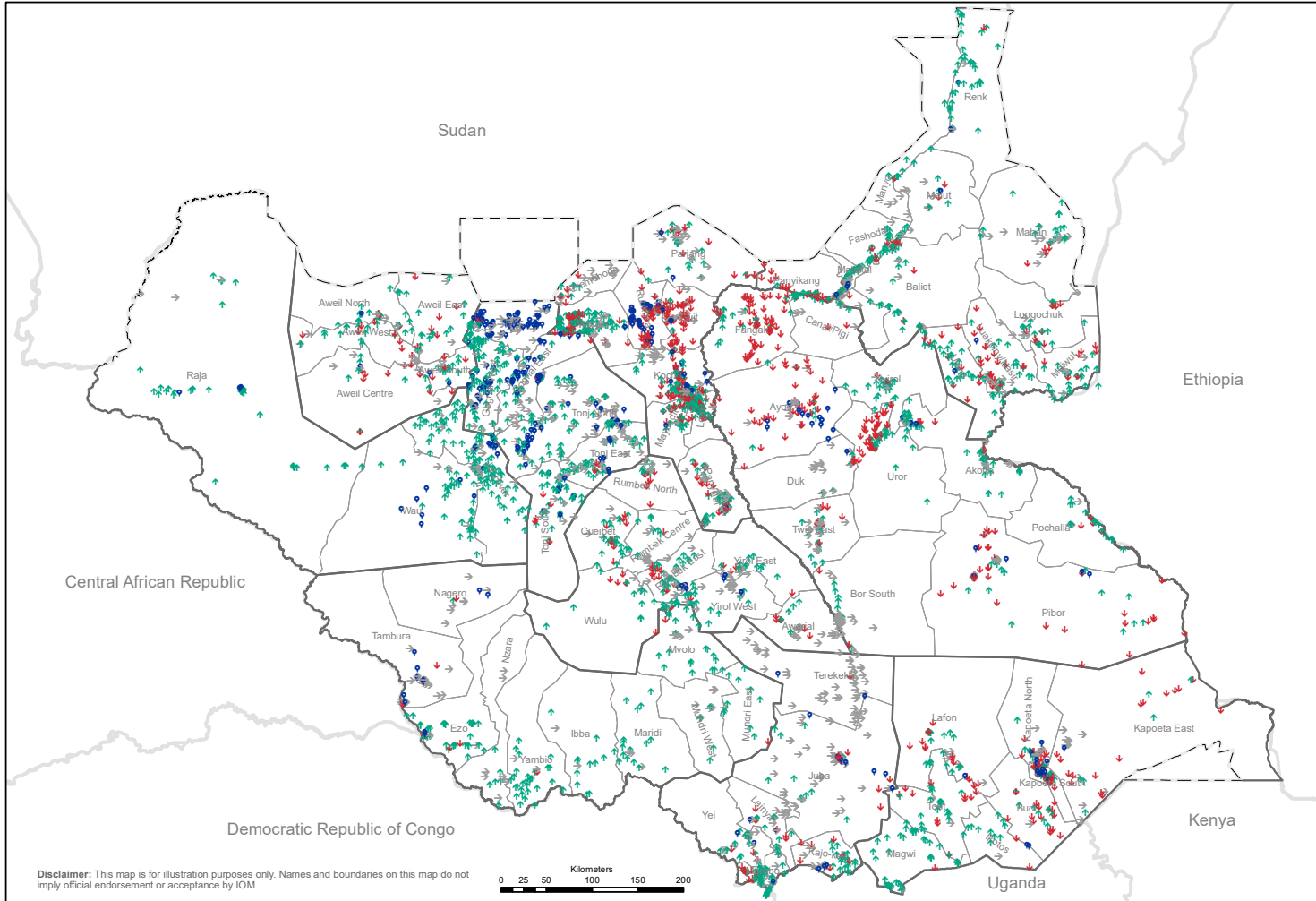
South Sudan

Mobility Tracking Round 12, December 2021

Returns Compared Locations R12-R11

State
County

Compared Location
↓ Decreased
↑ Increased
• New Location
→ No change



Counties with the most significant net decrease in the number of returnees were:

- Gogerial West (-24,543)
- Tonj South (-13,615)
- Koch (-13,103)
- Maban (-11,611)
- Ulang (-8,609)

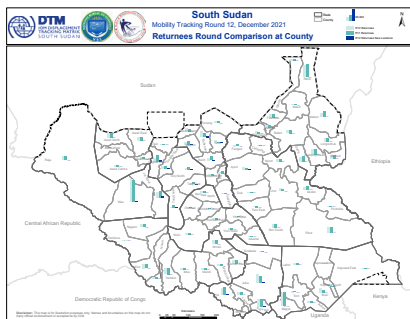
The main counties witnessing net increases in the number of returnees since round 11 were:

- Rubkona (+17,753)
- Juba (+13,787)
- Guit (+12,914)
- Budi (+8,947)
- Panyikang (+6,286)

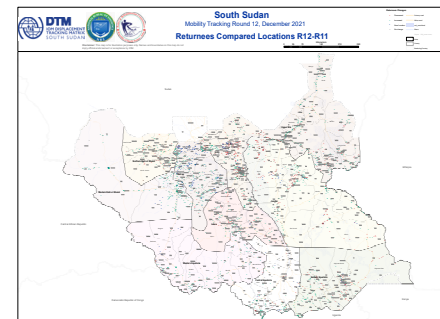
The counties with the highest numbers of returnees in new locations are:

- Gogrial Wes (15,481)
- Jur River (14,999)
- Rubkona (10,766)
- Ayod (6,240)

County Map (A4)



Location Map (A0)





South Sudan

Mobility Tracking Round 12, December 2021

Returnees by current sub areas and by previous displacement

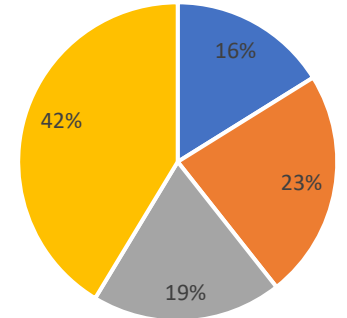


Disclaimer: Disclaimer: This map is for illustration purposes only. Names and boundaries on this map do not imply official endorsement or acceptance by IOM.

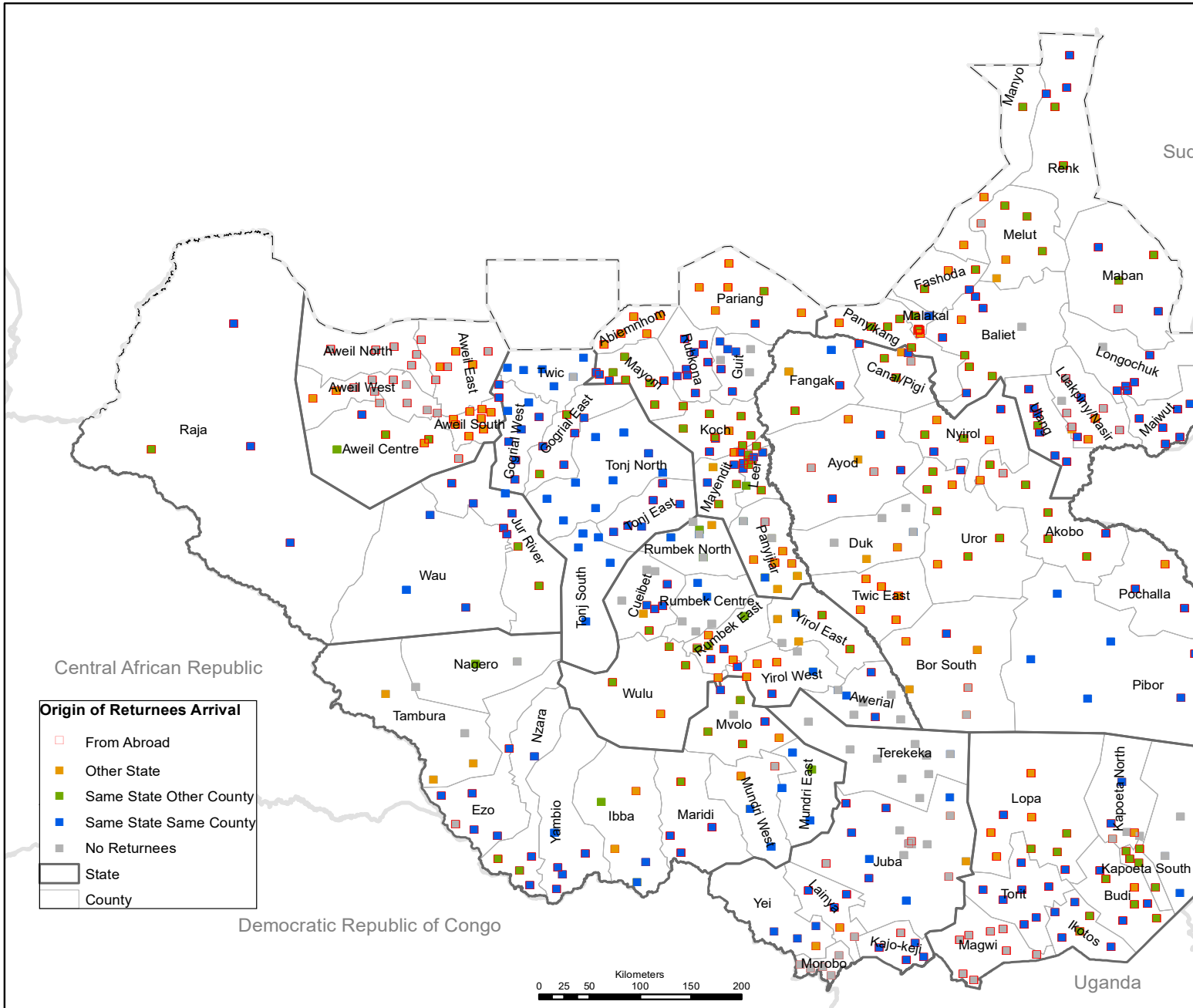
Returnee Arrival 2021

Payams by origin of the Returnees

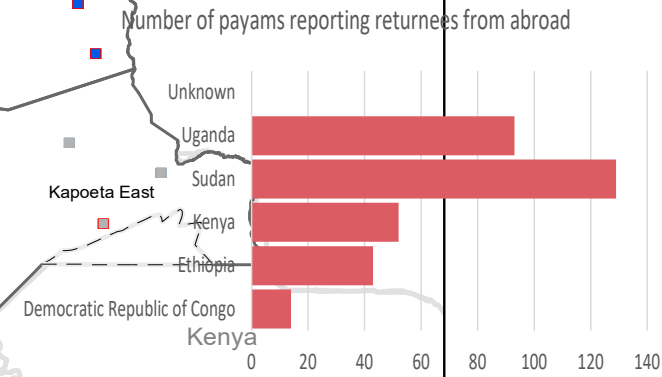
- Different State / Different County
- n/a (no Ret arrived)
- Same State / Different County
- Same State / Same County



Returnee Displacement	# of payams	Percent
Grand Total	508	100%
Different State / Different County	82	16%
n/a (no Ret arrived)	118	23%
Same State / Different County	98	19%
Same State / Same County	210	41%
Unknown	0	0%
Abroad	343	68%



- Origin of Returnees Arrival**
- From Abroad
 - Other State
 - Same State Other County
 - Same State Same County
 - No Returnees
 - State
 - County





STATE ATLAS: IDPs and RETURNEES LOCATIONS

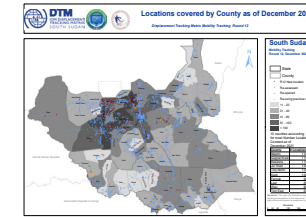
Click to access state level maps on returnee and IDP locations



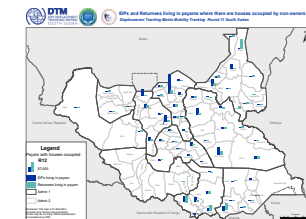
Baseline by location 3,654
Baseline by payam (508)



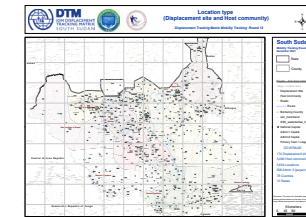
CLICK TO ACCESS OTHER THEMATIC MAPS



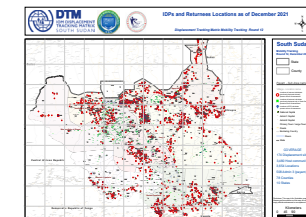
Locations covered by county



IDPs and returnees living in payams where there are houses occupied by non-owners



Location type (Displacement site and Host community) A0 map



IDPs and Returnees locations A0 Map

DTM IS SUPPORTED BY



For more information please contact SouthSudanDTM@iom.int or visit displacement.iom.int/south-sudan