

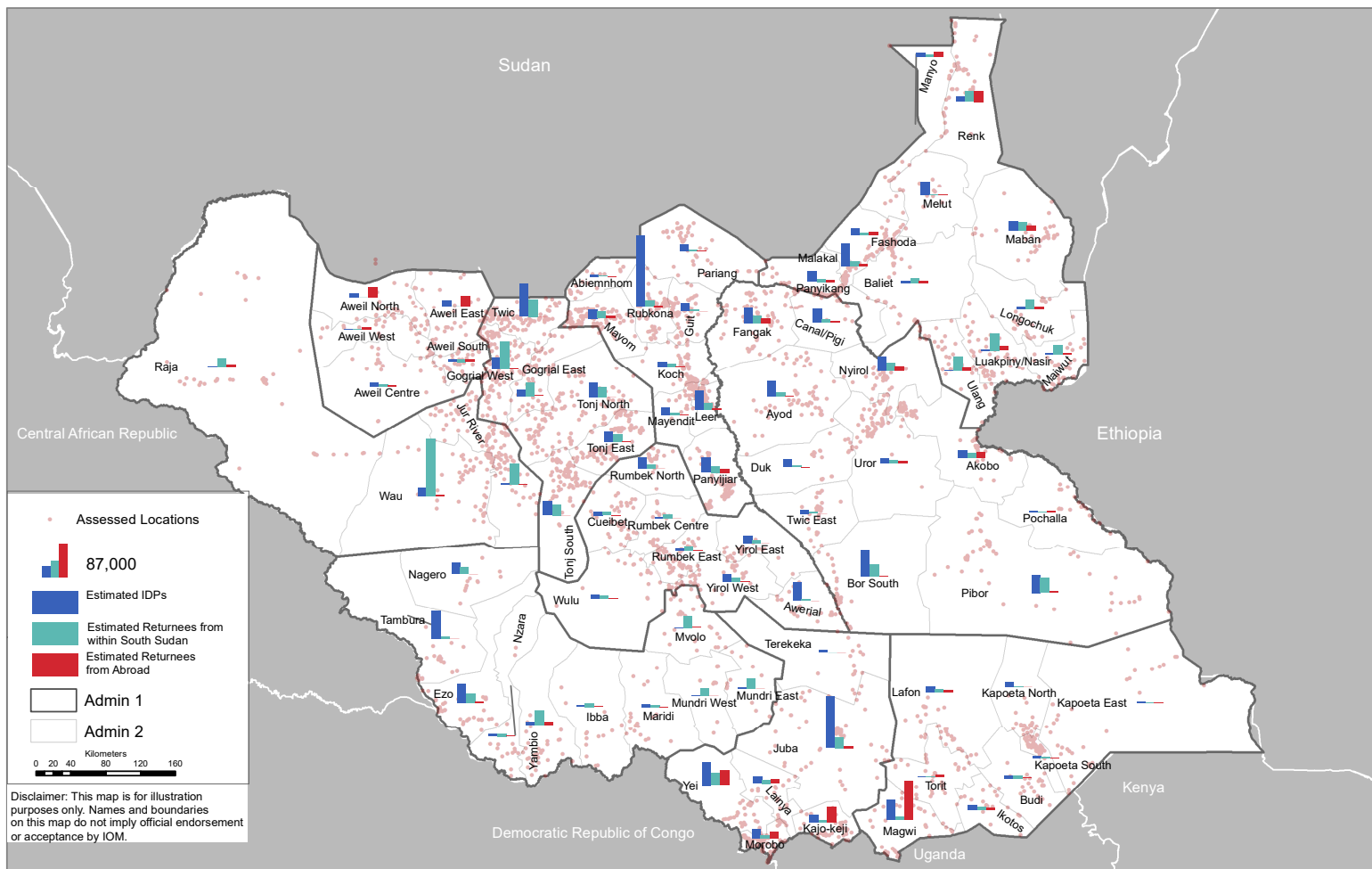


IDP and Returnee ATLAS as of August 2022

Mobility Tracking Round 13, South Sudan

Data Collection: July-August 2022

Published: 2023



Mobility Tracking supports the humanitarian response in South Sudan by **providing a unified and comprehensive system to collect and disseminate data on the numbers, mobility history and needs of IDPs and Returnees on a nationwide scale.** Data collection takes place at a granular level and is repeated at regular intervals to ensure accurate and up-to-date information.

IOM DTM mapped a total of 2,257,672 IDPs (including 7% previously displaced abroad) and 2,175,352 returnees (including 29% from abroad) in 3,614 locations across South Sudan as of August 2022.

Data collection for round thirteen took place from July to August 2022 following round twelve which took place from November to December 2021. DTM assessed 163 displacement sites and 3,451 villages/neighborhoods. Assessed locations were spread across 508 sub-areas (locally known as payams) at the third administrative level in every county (78) of all the 10 States.

PERIOD: JULY-AUGUST 2022 COVERAGE: 3,614 LOCATIONS 508 ADMIN 3 (PAYAM) IN ALL 78 COUNTIES



Current IDPs (Displaced between 2014 and Augst 2022):
2,257,672



Current Returnees (Returned between 2016 and August 2022):
2,175,352

BREAKDOWN OF IDPS AND RETURNEES POPULATION AS OF AUGUST 2022 BY PERIOD OF ARRIVAL

533,021 IDPs remain displaced during this period as of August 2022, by conflict (88%) and communal clashes (10%).

- **15 December 2013:** violence erupted in Juba. The fighting was particularly intense in Central Equatoria, Jonglei, Unity, Upper Nile and Lakes states.
- **23 January 2014:** An agreement to cease hostilities was signed by both parties
- Late January 2014: fighting in Unity State led to the forced displacement of thousands of civilians
- **August 2015:** the two warring parties reached Agreement on the [Resolution of Conflict in South Sudan \(ARCSS\)](#) facilitated by IGAD. Despite the 2015 ARCSS, violence continued in many parts of the country spreading to previously peaceful areas, e.g., Wau and Equatorias.

572,331 IDPs remain displaced since 2021 which is attributed to displacement are conflict (33%), communal clashes (17%) and natural disasters (47%).

564,039 individuals had returned during this period as of December 2021, of which 30% were previously abroad.

- **During the first months** of the year, populations continued being displaced due to the flooding during 2020.
- **Since May 2021** severe floods displaced populations along the Nile with Jonglei, Unity and Upper Nile States being the worst affected areas (DTM, OCHA).

537,556 IDPs remain displaced since January 2022. The main reason for displacement are conflict (22%), communal clashes (31%) and natural disasters (42%).

495,825 individuals had returned during this period as of August 2022, of which 31% were previously abroad.

- **August 2022** Transitional Government of National Unity signed a roadmap for extension of the transitional period for addition 24 month
- **Localized conflict** in Twic-Ngok border dispute, Upper Nile conflict, Pibor Administrative Area conflict



2014-2018 Pre R-ARCSS

2016-2018 Pre R-ARCSS

481,561 individuals had returned during this period as of September 2018, of which 25% were previously displaced abroad South Sudan

July 2016: violence broke out between government forces and opposition factions in Juba.
2017 and 2018: a series of cease-fires were negotiated and subsequently violated. During this period witnessed increased number of IDPs in the Equatoria Region, is attributed to a face-off between the center's forces and rebels, as well as the ceasefire violations reported in Jonglei.

- **June 2018:** Khartoum Declaration of Agreement between parties of the Conflict of South Sudan.
- **August 2018:** signing of a ceasefire and power-sharing agreement.
- **September 2018:** Signing of the Revitalized Agreement on the Resolution of Conflict in South Sudan, officially ending the civil war (IGAD).

2021



2022

2018- Post R-ARCSS-2020

539,926 IDPs remain displaced since 2018 (post R-ARCSS). the main reason for displacement are conflict (37%) and communal clashes (33%) and natural disaster (28%)

586,105 individuals had returned during this period as of October 2018 to December 2020, of which 29% were previously abroad.

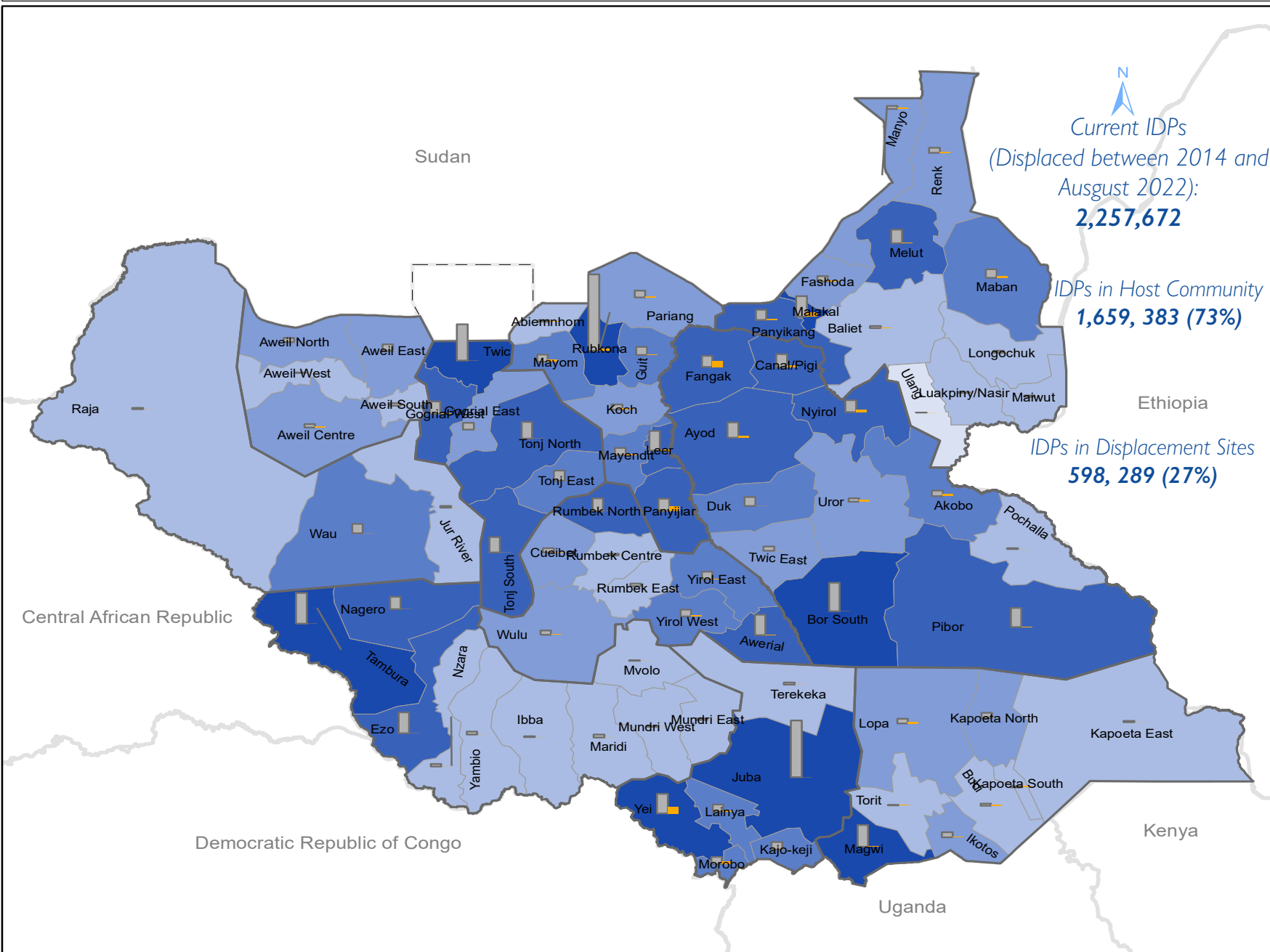
- **May 2019:** The pre-transition period was extended for six months after implementation delays.
- **Since June 2019:** severe floods displaced population in Northern Bahr el Ghazal, Warrap, Lakes, Jonglei, Upper Nile, Unity, Eastern Equatoria and Central Equatoria States (DTM, OCHA)
- **February 2020:** The Transitional Government of National Unity was formed.
- **September 2020:** UNMISS started retiring its troops and police from Protection of Civilians sites in Bor and Wau.
- **Since June 2020:** people were displaced by flooding from locations in Jonglei, Central Equatoria, Warrap, Unity and Northern Bahr el Ghazal (DTM, OCHA)





IDPs by County as of August 2022

Displacement Tracking Matrix Mobility Tracking Round 13



Current IDPs
(Displaced between 2014 and
August 2022):
2,257,672

IDPs in Host Community
1,659,383 (73%)

IDPs in Displacement Sites
598,289 (27%)

South Sudan

Mobility Tracking
Round 13, August 2022

- State
- County

IDPs Individuals

- 27 - 1,000
- 1,001 - 10,000
- 10,001 - 20,000
- 20,001 - 30,000
- 30,001 - 60,000
- 60,001 - 218,083

- 70,000
- Subset of IDP individuals (not previously abroad) present at time of assessment
- Subset of IDP individuals present at time of assessment who were previously displaced abroad

10 counties accounting for most IDPs as of August 2022

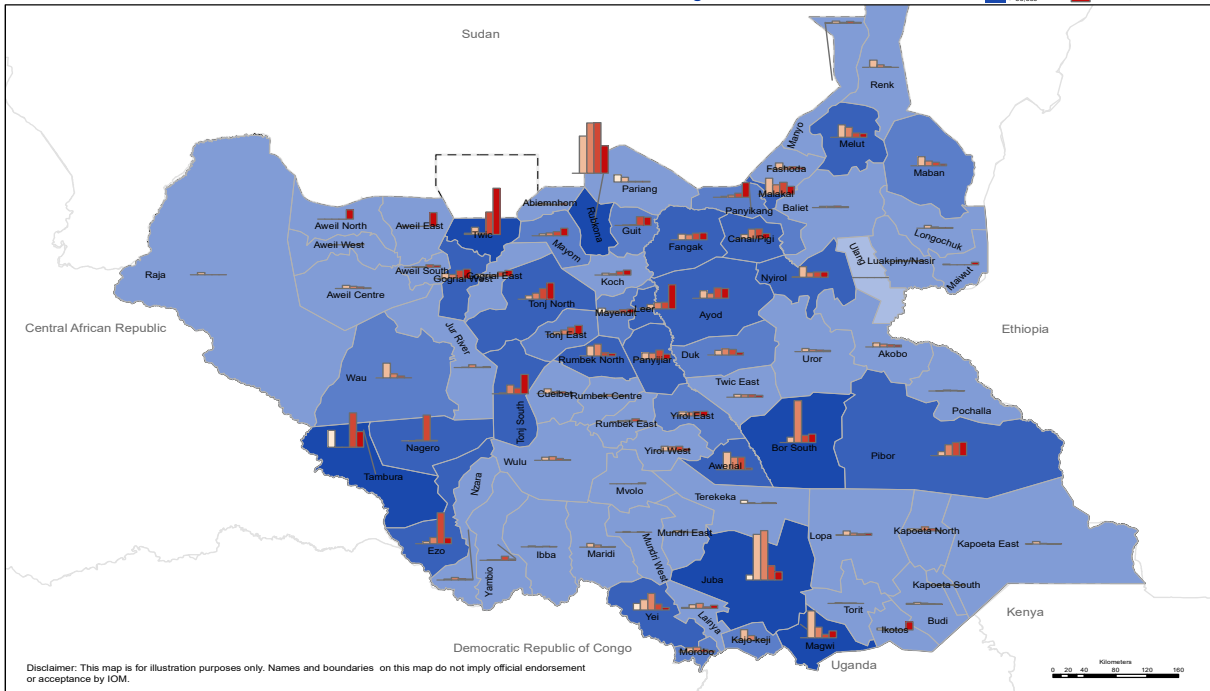
County	IDPs Individual
Rubkona	218,083
Juba	157,593
Twic	101,967
Tambura	86,147
Bor South	80,587
Yei	73,238
Malakal	69,370
Magwi	62,306
Ezo	58,996
Leer	58,308

Disclaimer: This map is for illustration purposes only. Names and boundaries on this map do not imply official endorsement or acceptance by IOM.



South Sudan

Mobility Tracking Round 13, August 2022
 Subset of IDPs who arrived from within South Sudan as of August 2022

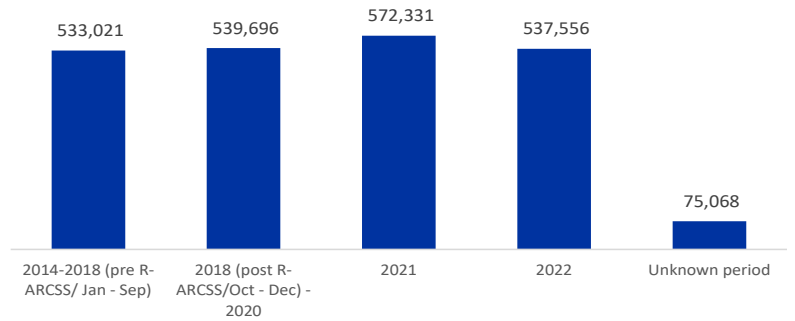


10 counties accounting for most IDP arrivals in 2022 (Jan-December 2022)

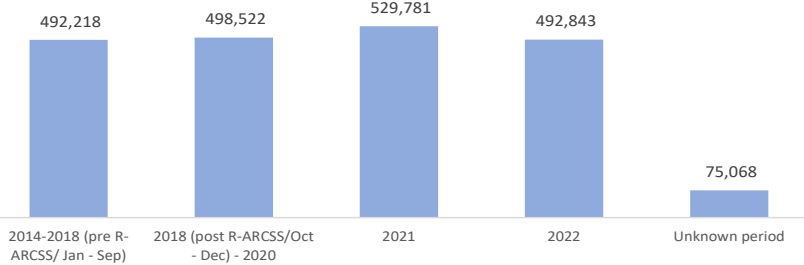
Accounting for 52% of the caseload displaced in this period

Twic	59,552	Tambura	20,044
Rubkona	35,441	Panyikang	19,072
Leer	31,148	Aweil East	17,415
Tonj South	24,550	Pibor	17,259
Tonj North	20,932	Ayod	12,597

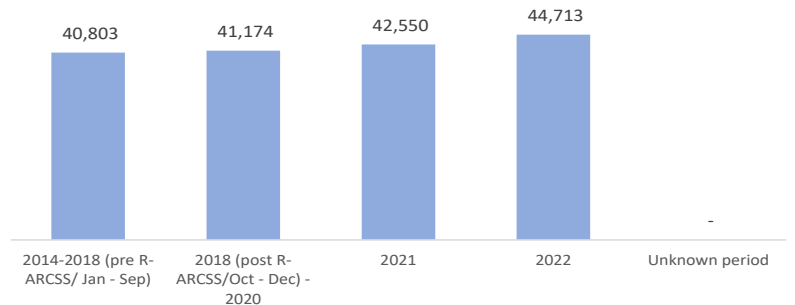
Total number of IDP individuals present by period of arrival



Subset of IDPs previously displaced within South Sudan by period of arrival at current location

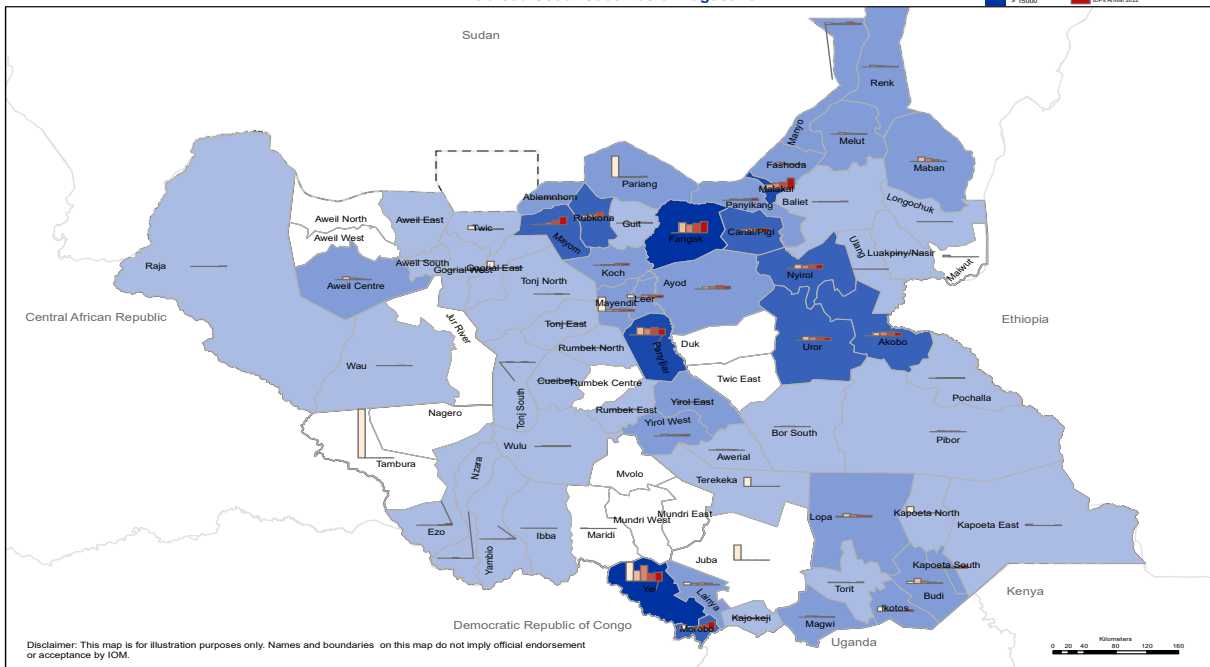


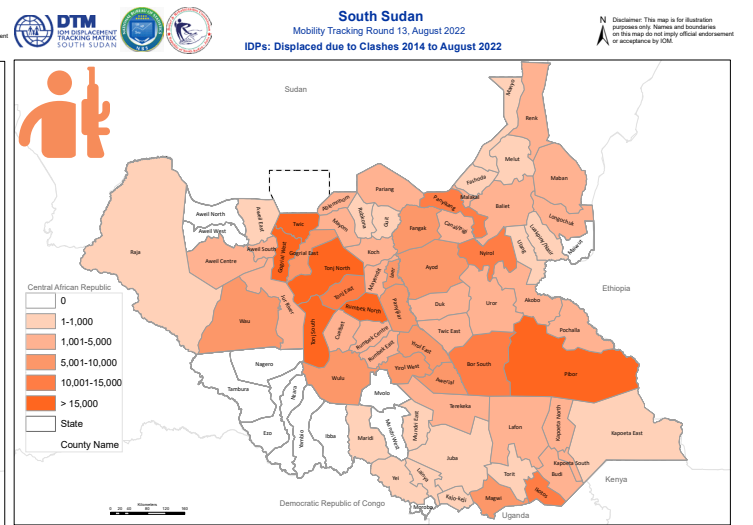
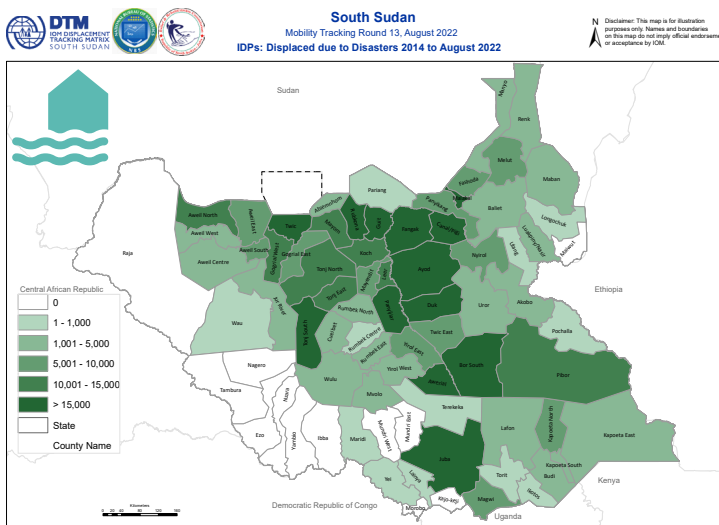
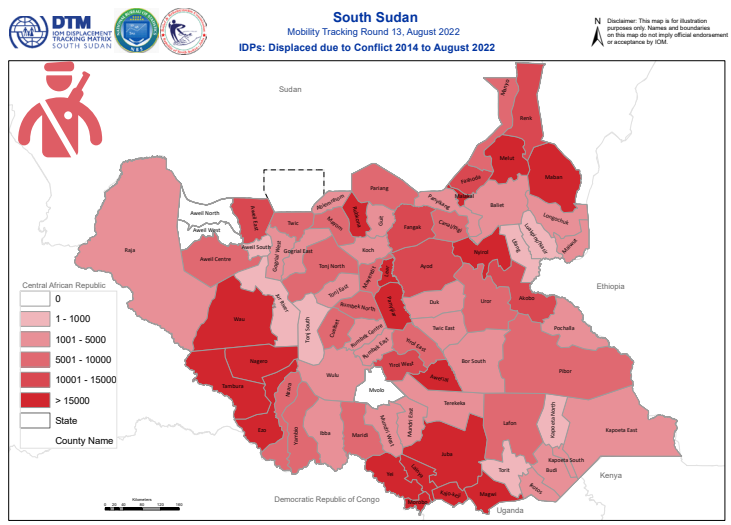
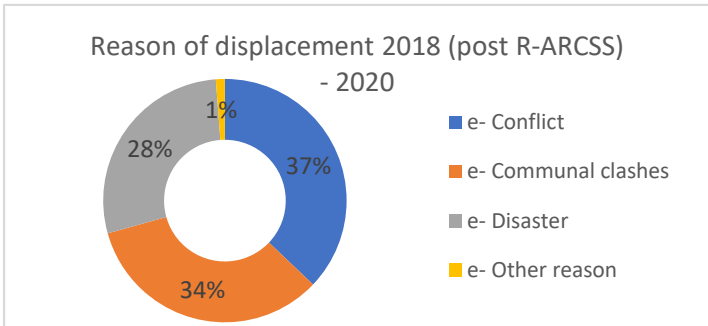
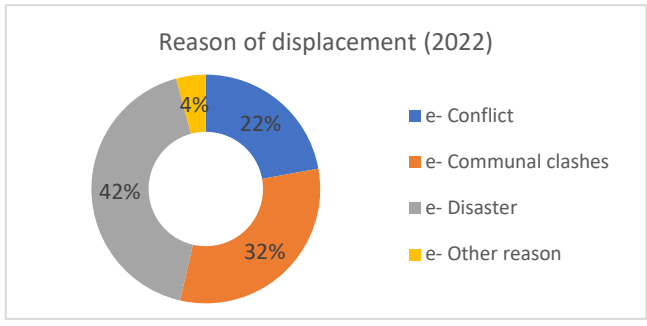
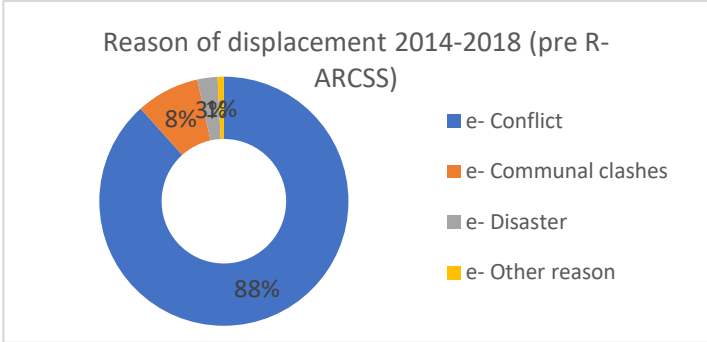
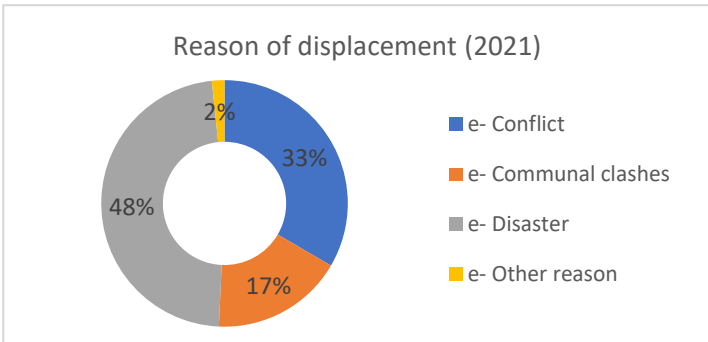
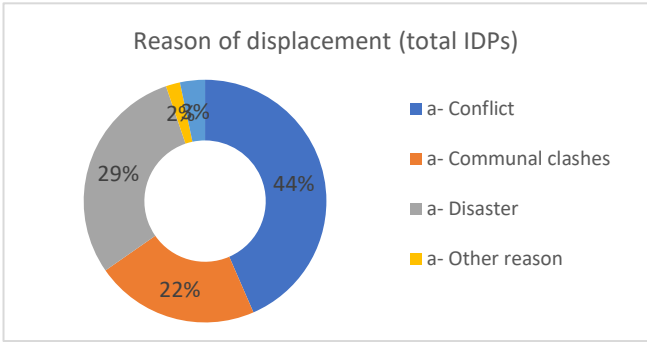
Subset of IDP individuals present at time of assessment who were previously displaced abroad by period of arrival



South Sudan

Mobility Tracking Round 13, August 2022
 Subset of IDPs who arrived from abroad South Sudan as of August 2022





Note: The maps contains layers for each recorded time period. These layers can be accessed in Adobe Acrobat's "Layers" pane under the folder "Conflict"/"Disaster"/"Clashes". Selecting and unselecting individual layers allows user to visualize displacement by time period



South Sudan

Mobility Tracking Round 13, August 2022
IDPs Compared Locations R13-R12

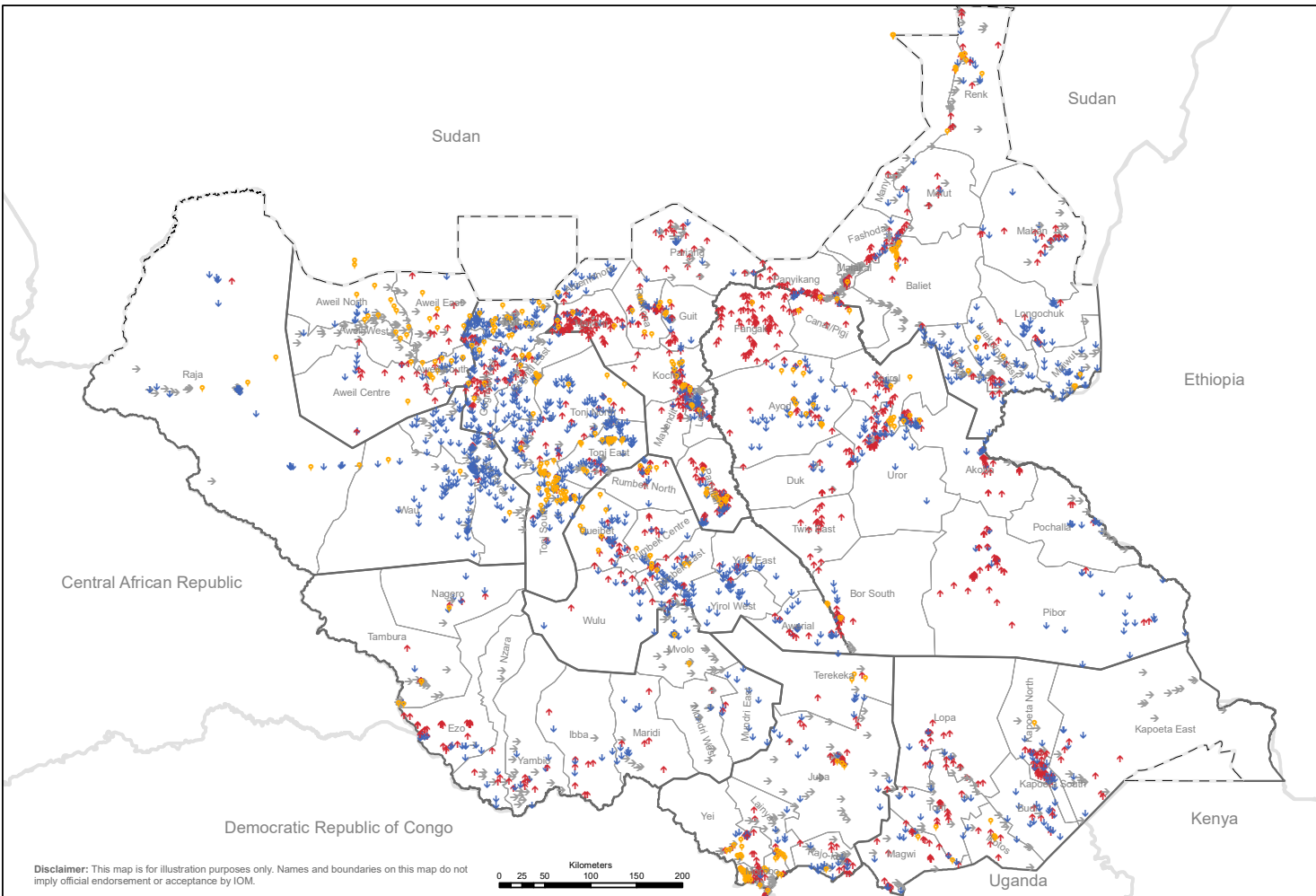
State

County

Compared Location

- ↓ Decrease
- ↑ Increase
- New Location
- No Changes

N



Disclaimer: This map is for illustration purposes only. Names and boundaries on this map do not imply official endorsement or acceptance by IOM.

Counties with the most significant net decrease in the number of IDPs were:

- Tambura (-58,805)
- Twic (-40,766)
- Rubkona (-35,432)
- Fangak (-29,240)
- Canal Pigi (-20,187)

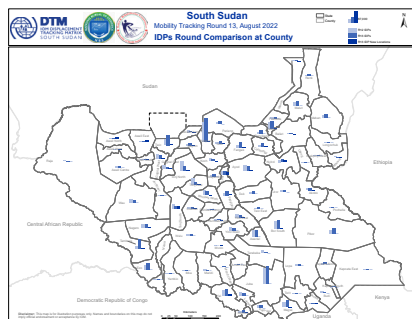
The main counties witnessing net increases in the number of IDPs since round 12 were:

- Tonj North (+47,034)
- Tonj East (+35,393)
- Tonj South (+23,418)
- Yirol East (+15,436)
- Terekeka (+15,035)

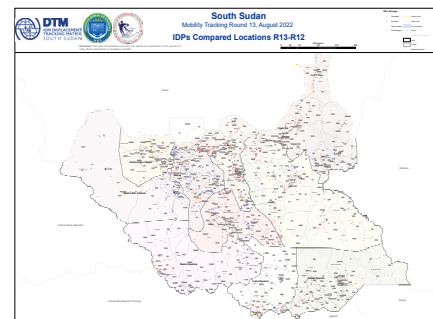
The counties with the highest numbers of IDPs in new locations are:

- Leer (26,040)
- Tonj South (21,581)
- Nyirol (14,554)
- Yei (13,704)
- Aweil East (11,534)

County Map (A4)



Location Map (A0)

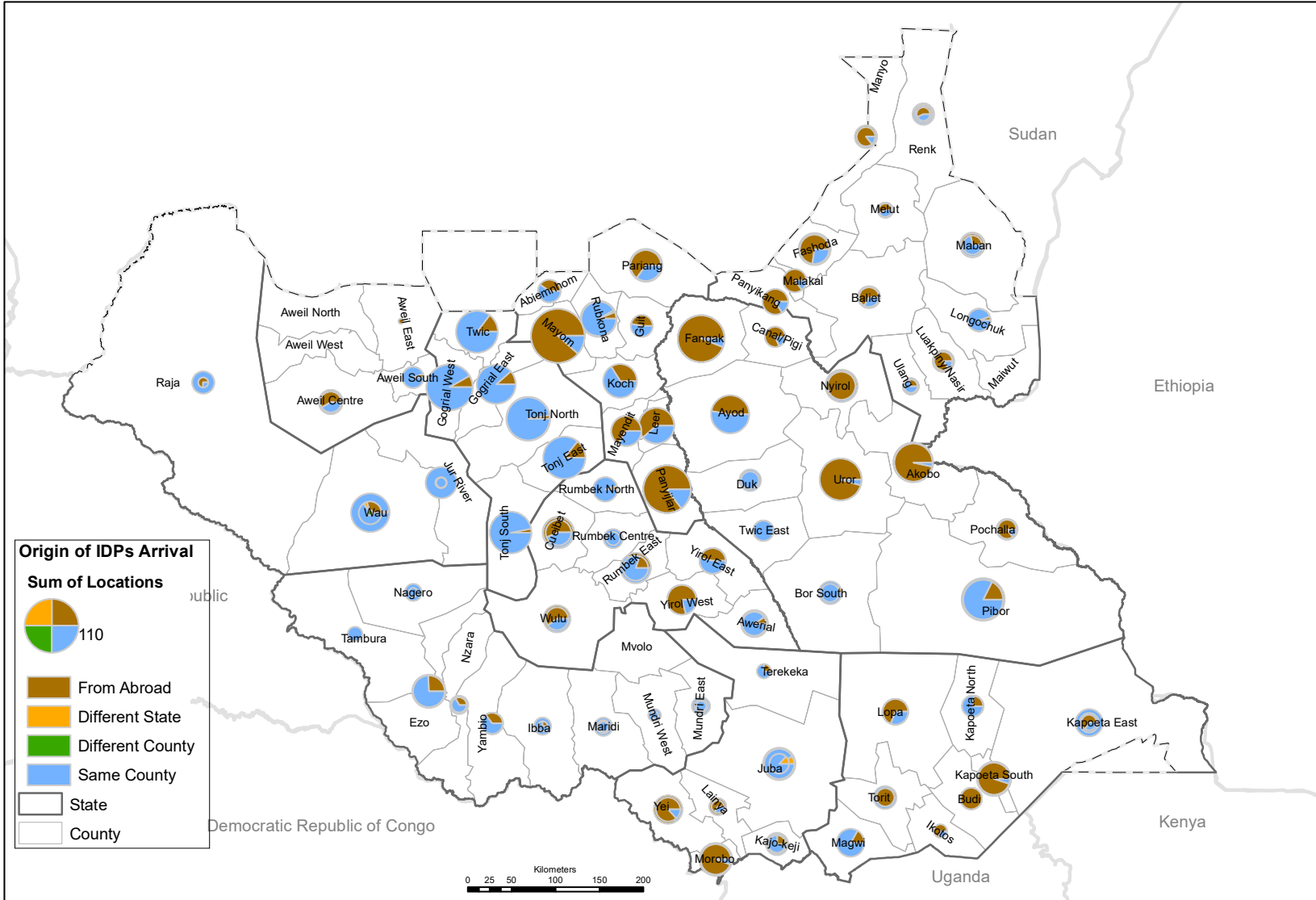


South Sudan

Mobility Tracking Round 13, August 2022

IDPs by County of Origin before displacement

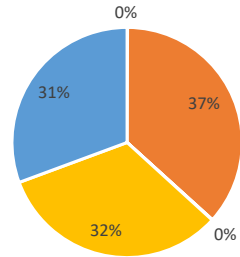
Disclaimer: Disclaimer: This map is for illustration purposes only. Names and boundaries on this map do not imply official endorsement or acceptance by IOM.



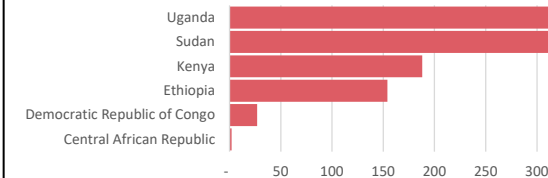
IDPs Arrival 2022

State by origin of the IDPs

- Different State / Different County
- n/a (no IDPs arrived)
- Same State / Different County
- Same State / Same County
- Abroad



Number of locations reporting IDPs previously displaced abroad





DTM
IOM DISPLACEMENT
TRACKING MATRIX
SOUTH SUDAN



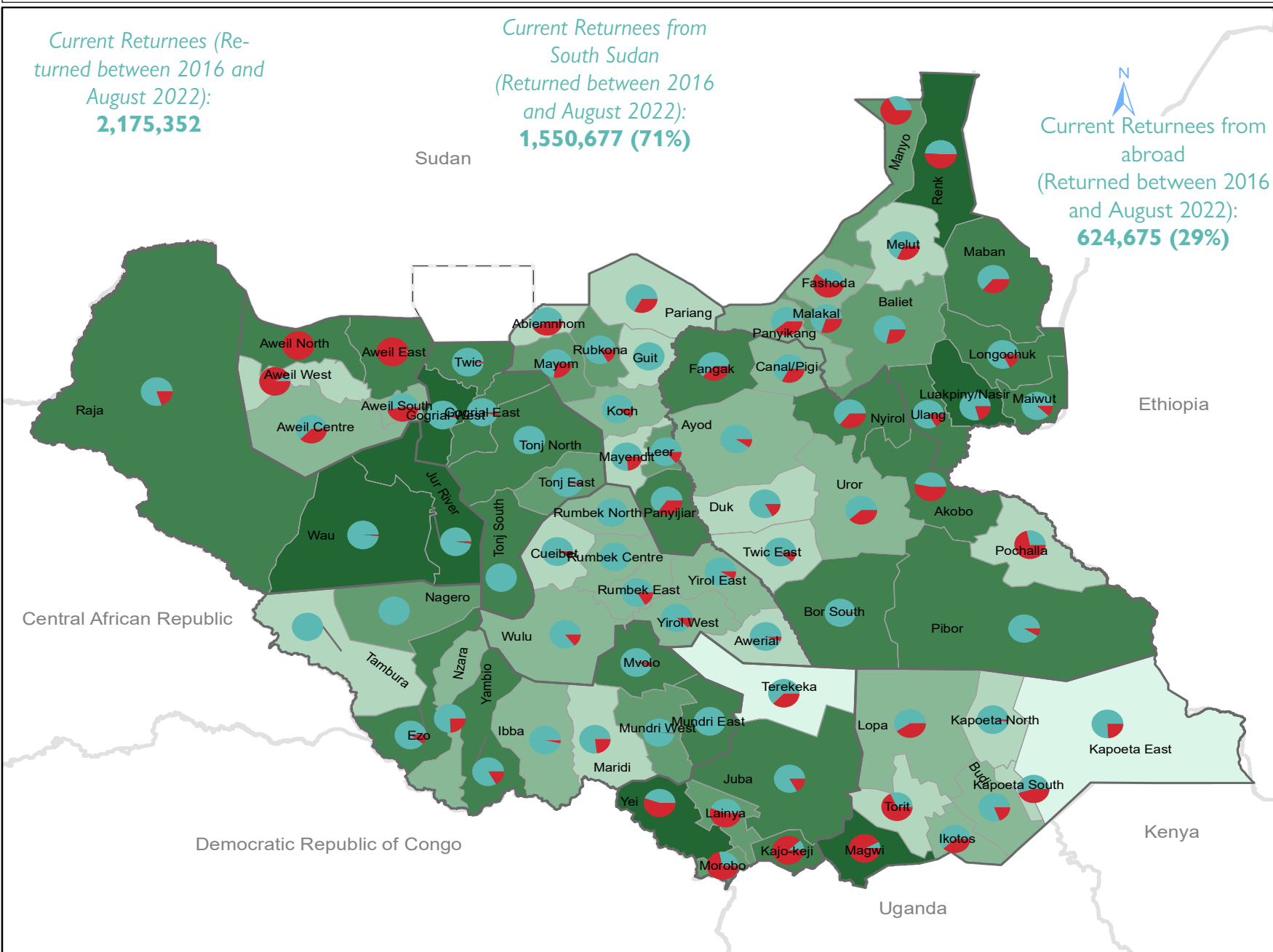
Returns by County as of August 2022

Displacement Tracking Matrix Mobility Tracking Round 13

Current Returnees (Re-
turned between 2016 and
August 2022):
2,175,352

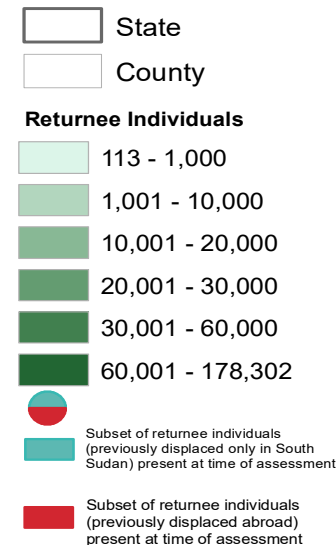
Current Returnees from
South Sudan
(Returned between 2016
and August 2022):
1,550,677 (71%)

Current Returnees from
abroad
(Returned between 2016
and August 2022):
624,675 (29%)



South Sudan

Mobility Tracking
Round 13, August 2022



10 counties accounting for most Returnees as of August 2022

County	Individuals
Wau	178,302
Magwi	130,275
Gogrial West	86,538
Yei	83,844
Jur River	66,567
Nasir	66,004
Renk	64,552
Twic	53,159
Kajo-Keji	53,109
Yambio	52,937

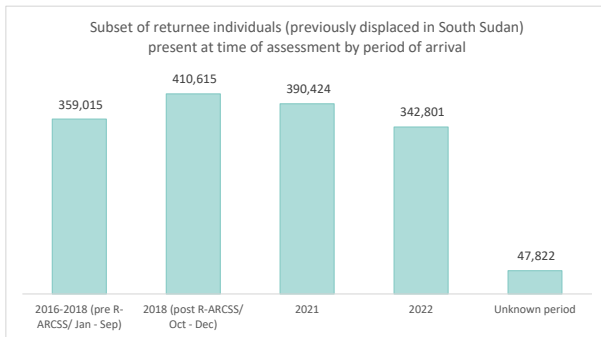
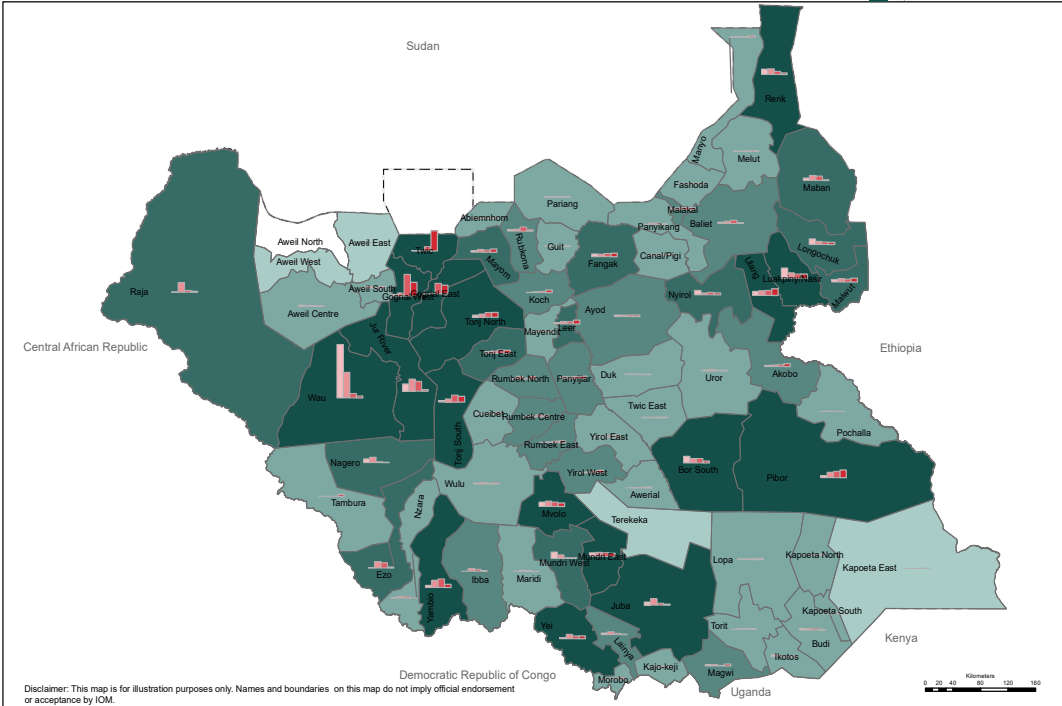
Disclaimer: This map is for illustration purposes only. Names and boundaries on this map do not imply official endorsement or acceptance by IOM.



Current Returnees from South Sudan
(Returned between 2016 and August 2022):
1,550,677 (71%)



South Sudan
Mobility Tracking Round 13, August 2022
Subset of returnees who arrived from within South Sudan as of August 2022

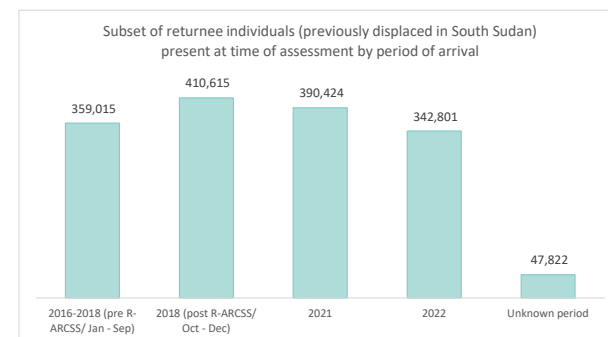
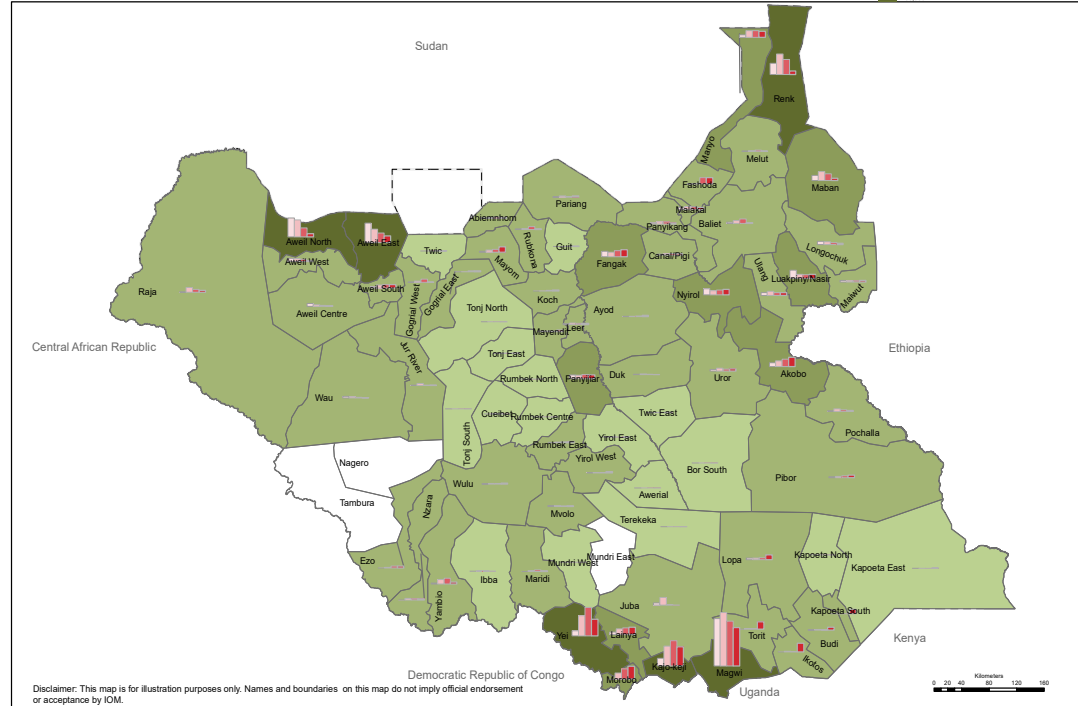


1,191,662 returnees previously displaced in SSD who arrived since 2018 post-R-ARCSS were present at the time of assessment. Of these 342,801 arrived in 2022 (January-August 2022) alone.

Current Returnees from abroad
(Returned between 2016 and August 2022):
624,675 (29%)



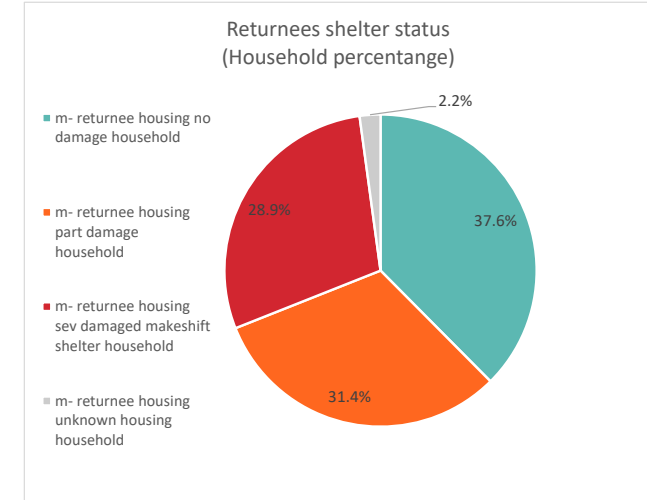
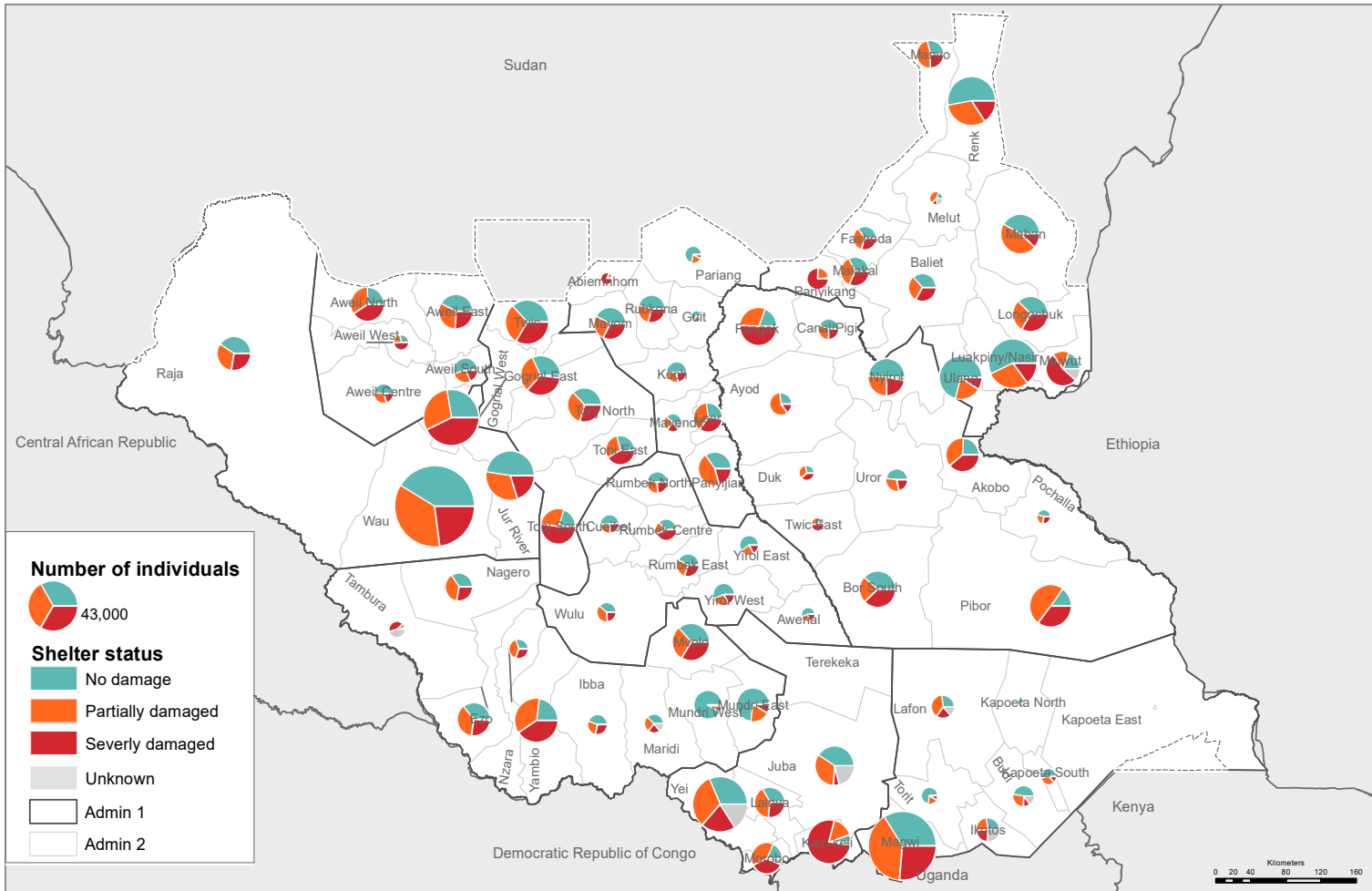
South Sudan
Mobility Tracking Round 13, August 2022
Subset of returnees who arrived from abroad South Sudan as of August 2022



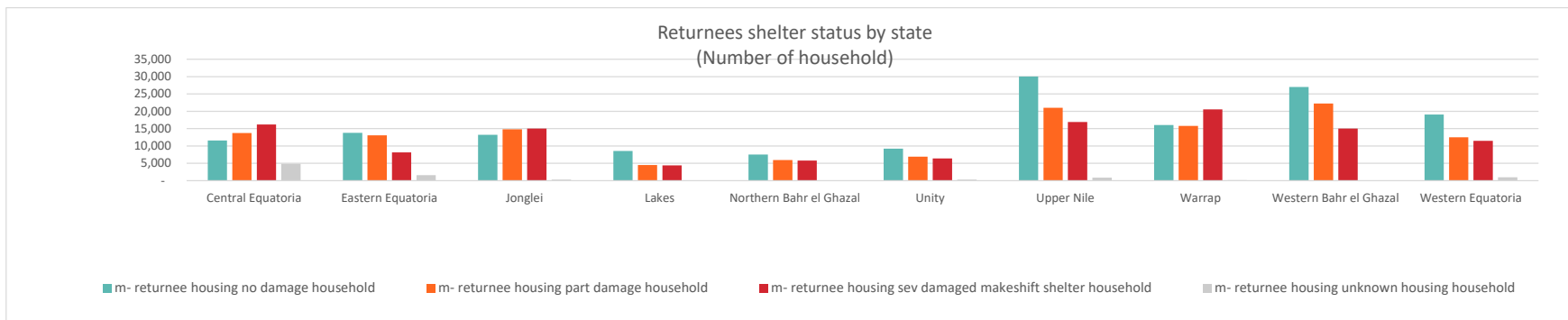
502,129 returnees previously displaced abroad who arrived since 2018 post-R-ARCSS were present at the time of assessment. Of these 153,024 arrived in 2022 (January-August 2022)

South Sudan
Mobility Tracking Round 13, August 2022
Shelter status of Returnees

Disclaimer: This map is for illustration purposes only. Names and boundaries on this map do not imply official endorsement or acceptance by IOM.



625,033 (29%) returnees are living in severely damaged makeshift shelters





DTM
IOM DISPLACEMENT
TRACKING MATRIX
SOUTH SUDAN



South Sudan

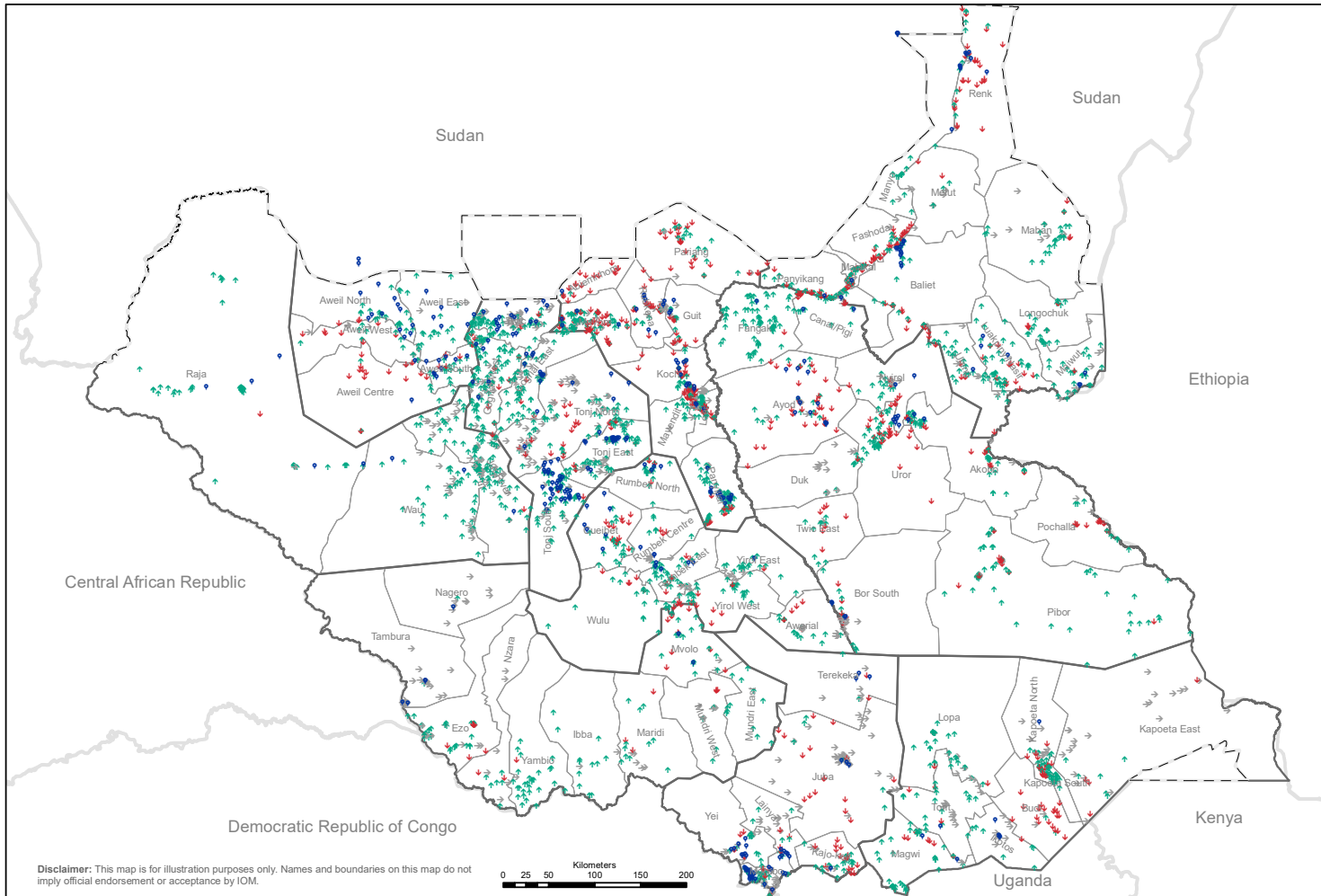
Mobility Tracking Round 13, August 2022

Returns Compared Locations R13-R12

State
County

Compared Location

- ↓ Decrease
- ↑ Increase
- New Location
- No Changes



Counties with the most significant net decrease in the number of returnees were:

- Twic (-46,445)
- Gogrial West (-33,889)
- Fangak (-25,183)
- Gogrial East (-23,736)
- Magwi (-23,596)

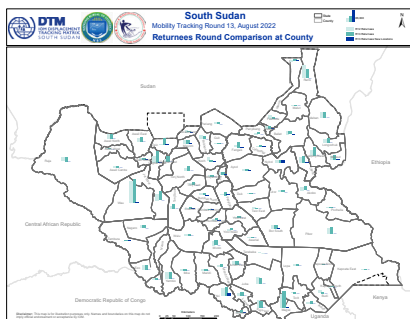
The main counties witnessing net increases in the number of returnees since round 11 were:

- Renk (+30,765)
- Koch (+18,830)
- Abiemnhom (+12,836)
- Fashoda (+12,029)
- Budi (+10,799)

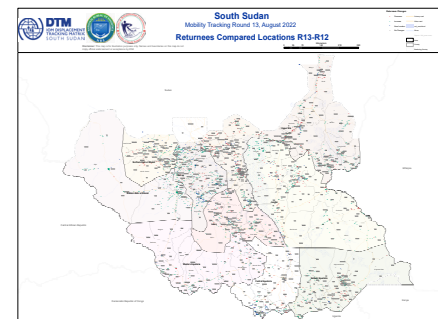
The counties with the highest numbers of returnees in new locations are:

- Yei (20,087)
- Nyirrol (18,596)
- Morobo (7,929)
- Bor South (7,260)

County Map (A4)



Location Map (A0)



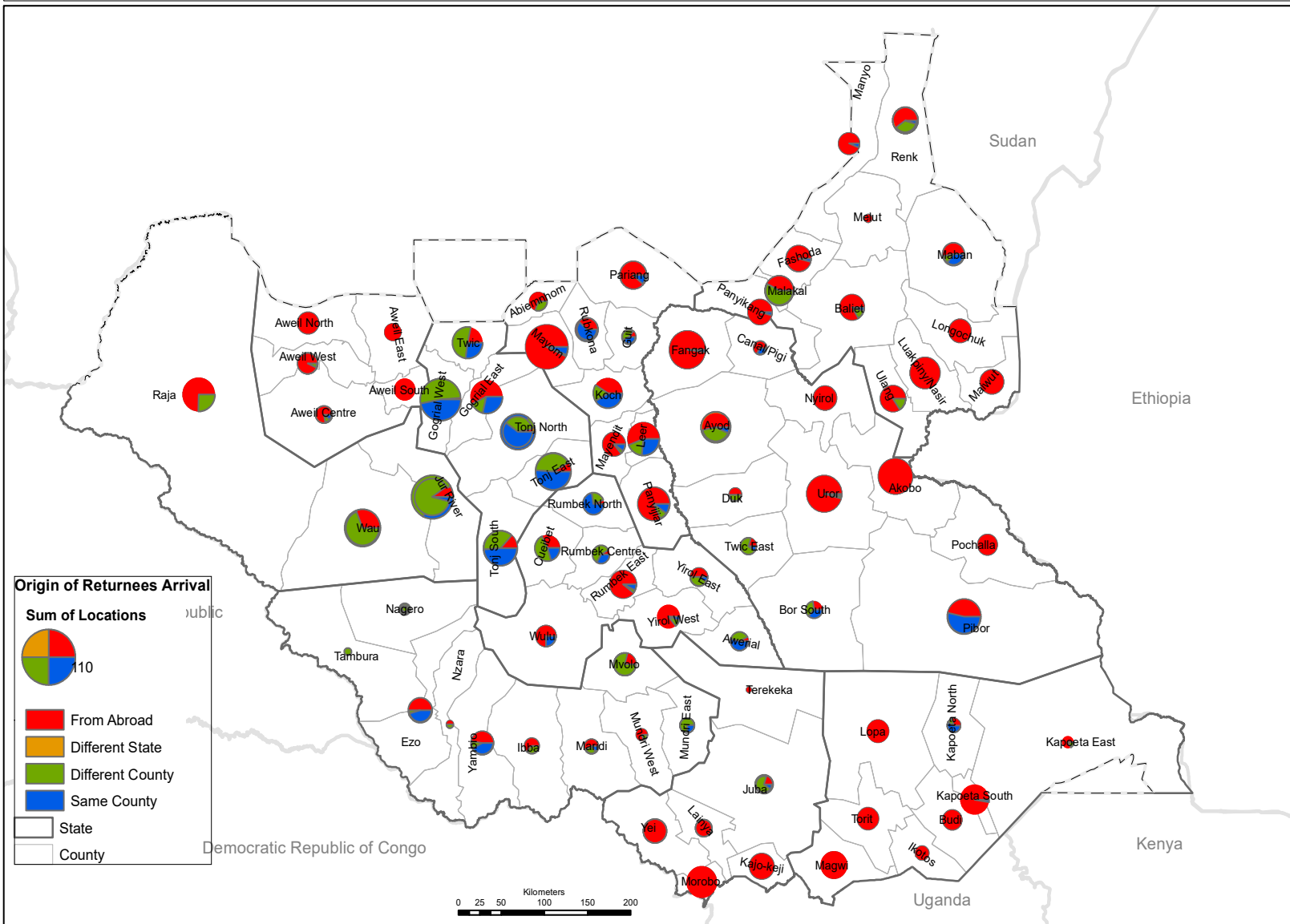
South Sudan

Mobility Tracking Round 13, August 2022

Returnees by County of Origin before displacement

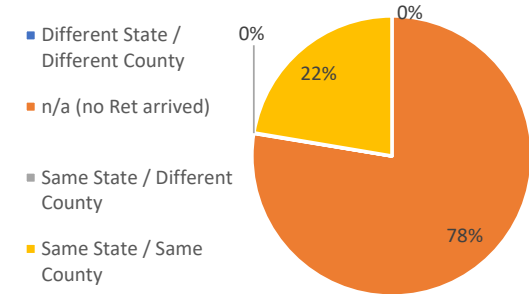


Disclaimer: Disclaimer: This map is for illustration purposes only. Names and boundaries on this map do not imply official endorsement or acceptance by IOM.

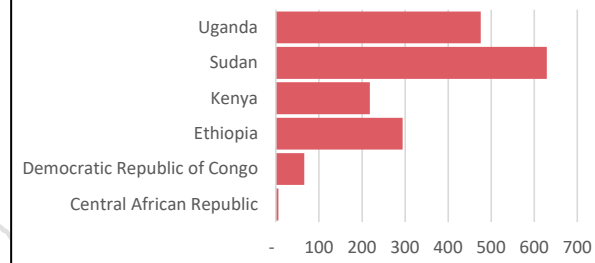


Returnee Arrival 2022

Payams by origin of the Returnees



Number of locations reporting returnees from abroad



STATE ATLAS: IDPs and RETURNEES LOCATIONS

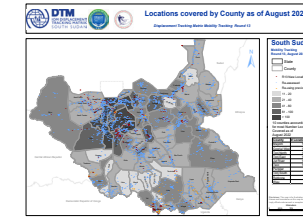
Click to access state level maps on returnee and IDP locations



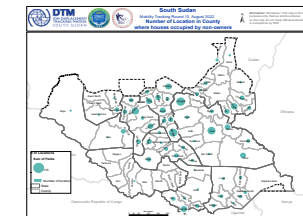
Baseline by location 3,614
Baseline by Assessment (3,614)



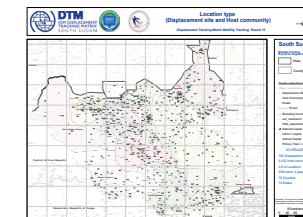
CLICK TO ACCESS OTHER THEMATIC MAPS



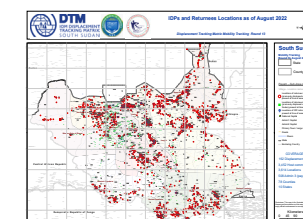
Locations covered by county



IDPs and returnees living in payams where there are houses occupied by non-owners



Location type (Displacement site and Host community) A0 map



IDPs and Returnees locations A0 Map

DTM IS SUPPORTED BY



For more information please contact
SouthSudanDTM@iom.int
or visit
displacement.iom.int/south-sudan