








174,011 IDPs

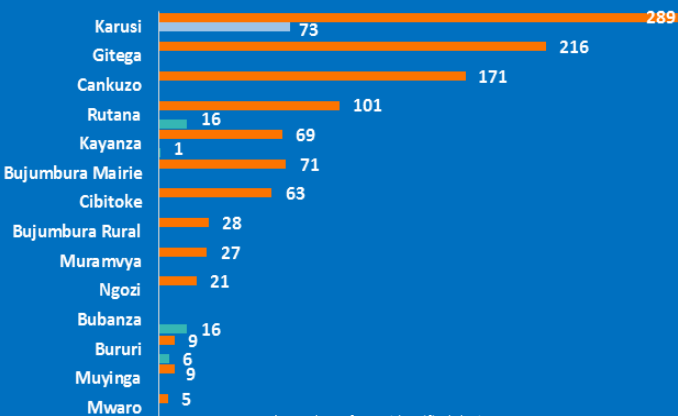
38,538 Displaced Households

PARTICULARLY VULNERABLE GROUPS

-  **17%** of displaced households are headed by women
-  **4%** of displaced households are headed by minors
-  **2%** of displaced persons live with disabilities
-  **2%** of displaced minors are unaccompanied
-  **2%** of displaced persons are pregnant women

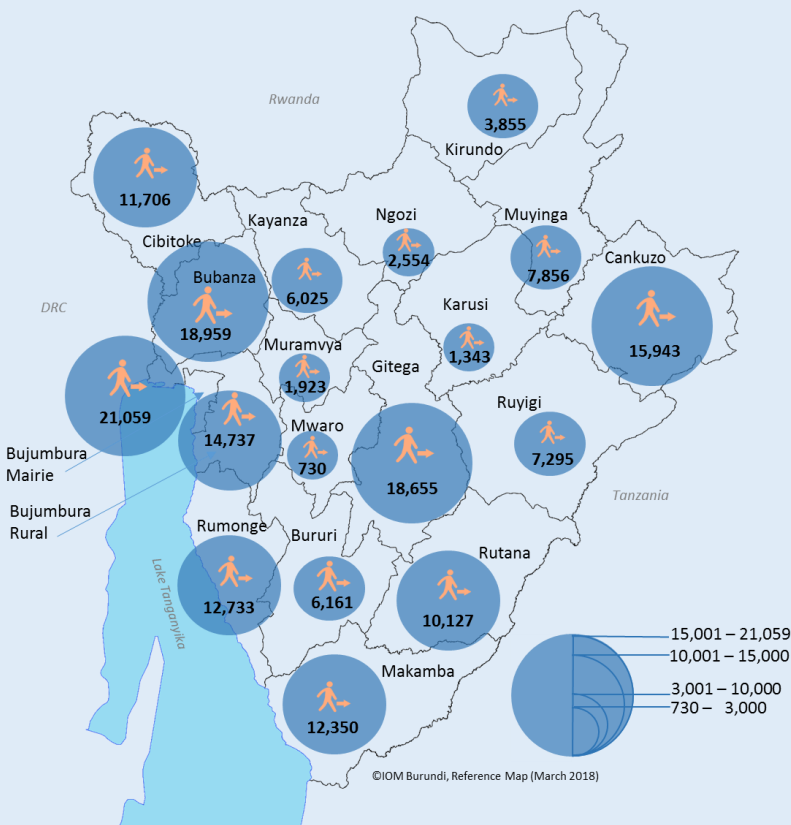
EMERGENCY RELATED DISPLACEMENTS*

■ Torrential rains ■ Floods ■ Strong winds



* Number of IDPs identified during DTM emergency tracking activities in March

PRESENCE OF IDPs BY PROVINCE



DISPLACEMENT REASONS

Natural disasters

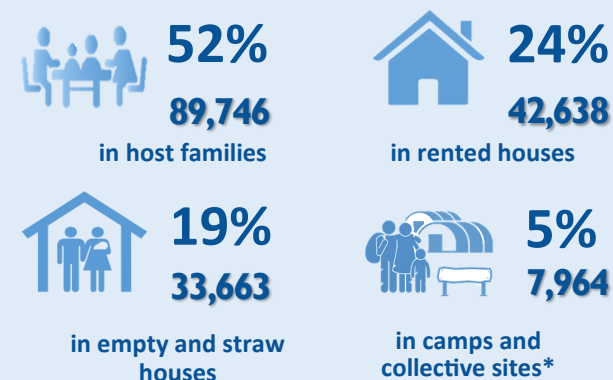
71%
123,085

Socio-political situation

29%
50,117

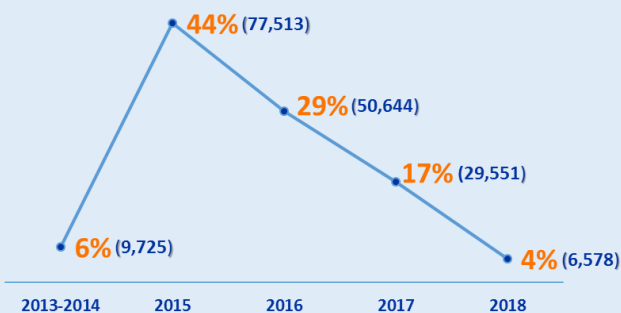
* Other reasons: 809

ACCOMMODATION TYPES

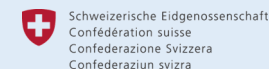


* Number of IDPs before the closure of Mushasha I, Mushasha II, Cashi and Gitaza camps on 27th March 2018

PERIODS OF DISPLACEMENT*



*Currently displaced IDPs



Confédération suisse
Confederazione Svizzera
Confederaziun svizra

Direction du développement
et de la coopération DDC

