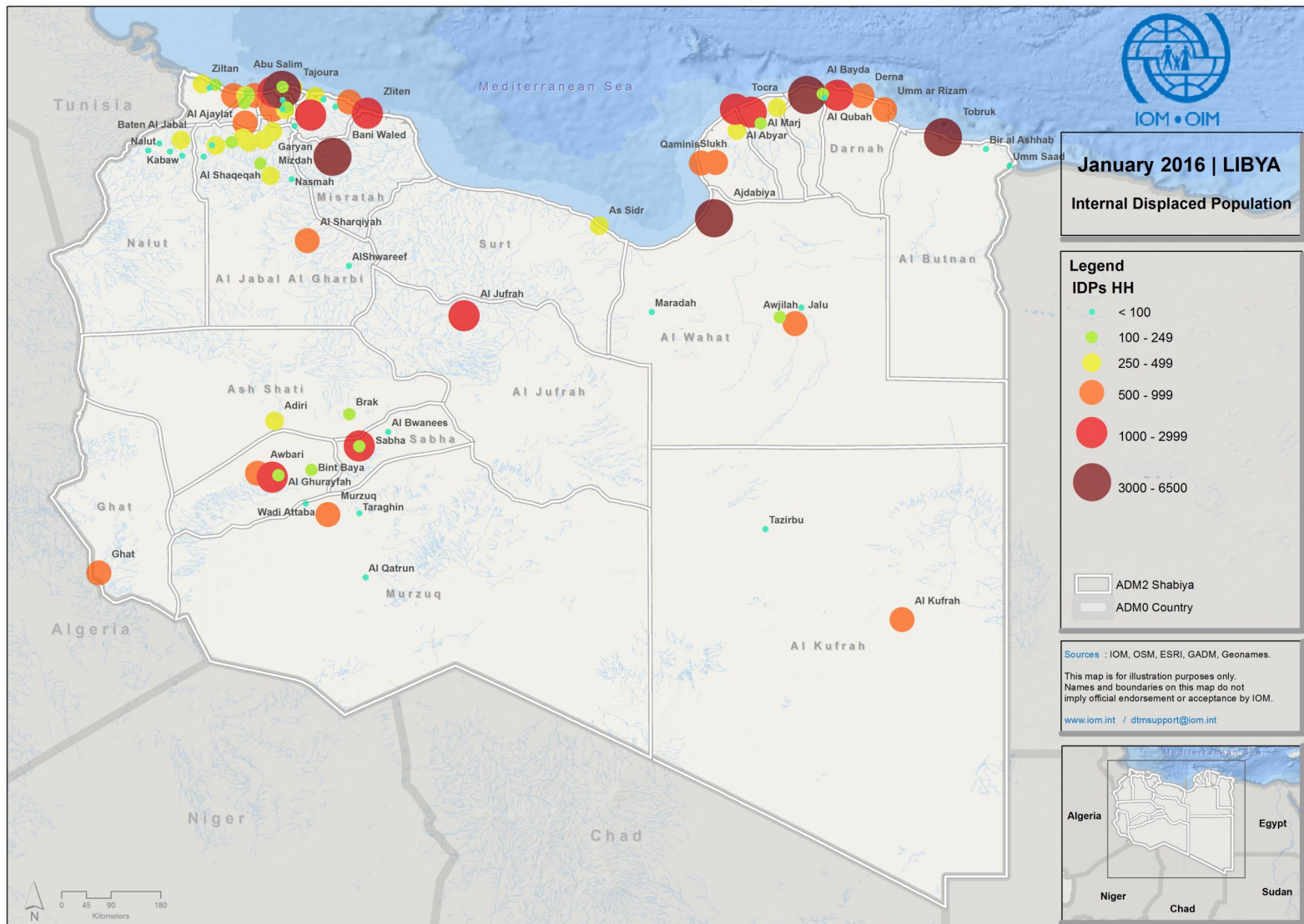




LIBYA

HIGHLIGHTS

- IDP ASSESSMENTS HAVE BEEN COMPLETED IN 91 OUT OF 104 AREAS IN LIBYA, IDENTIFYING 88 IDP-HOSTING AREAS
- 268,943 IDPs (53,740 IDP HOUSEHOLDS) WERE IDENTIFIED IN THE 88 COVERED AREAS
- 79% OF IDENTIFIED IDPs WERE DISPLACED DURING THE LAST 18 MONTHS
- MOST COMMON IDP ACCOMMODATION TYPE IS RENTED OR HOSTED ACCOMMODATION. HOWEVER, CRITICAL SHELTER TYPES SUCH AS SCHOOLS AND OTHER PUBLIC BUILDINGS, UNFINISHED AND ABANDONED BUILDINGS, AND RANDOM/NON-FORMAL COLLECTIVE SETTLEMENTS ARE ALSO PREVALENT
- 130,637 RETURNEES WERE IDENTIFIED IN 19 AREAS; 71% OF THE IDENTIFIED RETURNEE POPULATION ARRIVED FROM OTHER AREAS WITHIN THE COUNTRY
- 28 MIGRANT TRANSIT POINTS AND 50 MIGRANT-HOSTING AREAS WERE IDENTIFIED



Map A: Identified IDP population by areas of current residence

1

BACKGROUND ON DISPLACEMENT AND MIGRATION IN LIBYA

INTRODUCTION TO DTM IN LIBYA

BACKGROUND

In the context of the political instability that has prevailed since the uprising in Libya (October 2011) and culminated in the collapse of a fragile central authority accompanied by fragmentation and infighting among myriads of militias, with continued fighting since the mid-2014 escalations, estimates indicate that the number of Internally Displaced Persons (IDPs) in Libya has exceeded 400,000 individuals, some eight percent of the total population (HNO, September 2015). While the country struggles to achieve and maintain stability, thousands of migrants are also taking journeys to and through Libya in a desperate bid to seek a better life in Europe. These migrants are exposed to risks of being trafficked and exploited while traveling through dangerous routes in deserts and territories controlled by different armed groups, as well as dying during attempts to cross the Mediterranean Sea.

However, there has been no standardized mechanism in place to verify and regularly update IDP and migrant numbers. Given that most humanitarian and international organizations operate remotely from Tunis since mid-July 2014 due to the deteriorating security situation, maintaining access to reliable and updated data on the humanitarian situation in Libya has been challenging.

DTM RATIONALE IN LIBYA

In response and with financial support from ECHO and DFID, IOM in 2015 commenced to build up capacity for the roll out of the Displacement Tracking Matrix (DTM). The primary purpose of the DTM is to track and monitor population movements in Libya in order to collate, analyze and share comprehensive information on IDP and migrant populations, including numbers, demographics, locations of origin, displacement and movement patterns, primary needs, as well as service provision, so as to advise both humanitarian and return/recovery programming, to protect and assist,

and advocated on behalf of the IDP and migrant populations in Libya. Through deployment of more than 100 enumerators, the first DTM round conducted between December 2015 and January 2016 achieved the collection of IDP and migrants baselines in 88% of the country, covering 91 out of 104 areas, of which 88 areas were identified as having an IDP presence.

Different reasons underlie internal displacement patterns in Libya: Threat / fear from general conflict and armed group presence together with fear of the widespread insecurity and criminality, act as a major reason for displacement. General fear and feeling of insecurity is linked to lack of governance and rule of law, as well as the continued struggle for power between rival armed groups, including militias, extremist groups, and the Libyan national army. Other security related issues – e.g. fear to be targeted due to one's actual or perceived political affiliation, also count among the reasons for displacement. In addition, economic factors –moving due to lack of source of income / livelihoods in one's area of habitual residence, were found to be among the reasons for displacement.

Baseline assessments of DTM round 1 collected data on whether each area receives or generates displacement, IDP and migrant numbers in the area, areas of origin, types of accommodation, and IDPs' reasons for and time of displacement. Data collection also commenced on the location level to triangulate findings and obtain more detailed information than is captured at the area level.

This report includes the results of the baseline assessments conducted at area level, providing a broad overview of IDPs' and migrants' locations and numbers, as well as information about time of displacement, reason for displacement, types of shelter, and return movements. Future round of the DTM will seek to gather more in-depth information on demographics, vulnerabilities and priority needs at the location level.

2

OVERVIEW OF INTERNAL DISPLACEMENT

KEY POINTS

- DTM FIRST ROUND COVERED 91 AREAS / BALADIYAS
- 268,943 IDPs IDENTIFIED IN 88 AREAS OF LIBYA
- AMONG THE IDENTIFIED IDPS, 79% WERE DISPLACED IN THE PAST 18 MONTHS AS A RESULT OF THE RECENT LIBYAN CIVIL WAR, WHILST 13% HAVE BEEN DISPLACED SINCE 2011, AND 9 % BETWEEN 2012 AND MID-2014

“ IN THE INITIAL ROUND, DTM IDENTIFIED AND LOCATED **268,943** INDIVIDUALS (53,740 IDP HOUSEHOLDS), COVERING 91 OUT OF 104 AREAS IN LIBYA. THIRTEEN AREAS WERE NOT COVERED DURING THE FIRST ROUND, INCLUDING BENGHAZI AREA WHICH IS ESTIMATED TO HOST MORE THAN A QUARTER OF THE TOTAL IDP POPULATION IN LIBYA. THEREFORE IDP ESTIMATES ARE EXPECTED TO INCREASE SIGNIFICANTLY AS DTM REACHES FULL COUNTRY COVERAGE DURING THE FOLLOWING ROUNDS. ”

DISPLACEMENT PATTERN

Around 33,600 IDPs left their area of former residence during 2011; most of them came from Tawergha, a town some 40 kilometers to the south-east of Misratah. Tawergha hosted loyalists of the previous regime, who were accused of supporting Qadhafi's government and of committing war crimes. Those who took shelter in Tawergha along with the host community have been at risk in an apparent deliberate campaign to target and collectively punish Tawergha's civilian population (Amnesty International, 2013). The Misratan anti-Qadhafi fighters attacked the town in mid-August 2011 causing thousands of Tawerghans to leave their town and seek shelter in other areas in Libya.

Between February 2012 and March 2014 when a ceasefire was negotiated, repeated clashes between the Tebu who had opposed Qadhafi, and the Tuaregs and Zwai tribes in and around al-Kufra resulted in the deaths of several hundred people and the displacement of large parts of the town's population (UNSMIL, 27 February 2012; ICRC, 12 April 2012; ICRC, 28 January 2014).

Libyans continued to flee their areas of residence of Tawergha, Benghazi, Al Kufrah, Tripoli, Awbari and other areas throughout 2012, 2013 and the beginnings 2014 as a result of the increased tension between various armed groups. Displacement during this period was not as significant as the previous wave, with around 24,000 individuals displaced between 2012 and mid 2014). Most of these IDPs were

accused of being supporters of the Qaddafi regime by armed groups and have thus been victims of retaliatory attacks.

Armed fighting escalated by mid May 2014 in Benghazi, then in Tripoli by mid-June. During the summer of 2014, fighting in Tripoli and other areas of the country characterized by the indiscriminate use of heavy weaponry in densely populated areas by all protagonists, led to the displacement of hundreds of thousands of people within and around the capital, as well as in Benghazi ([Libyan Humanitarian appeal](#), 9 October 2014).

DTM identified and located more than 211,000 IDPs who have left **since mid-2014** (79% of total identified IDPs), the majority originated from Benghazi, Derna, Sirte, Awbari, Kikla, Tripoli and al Kufrah, and fled to Al Bayda, Tobruk, Ajdabiya, Abu Salim, Bani Waled, Tocra, Zliten, Al Qubah, Sabha, Al Ghurayfah, and Al Marj. Despite having IDPs originating from the area, Benghazi also received IDPs.

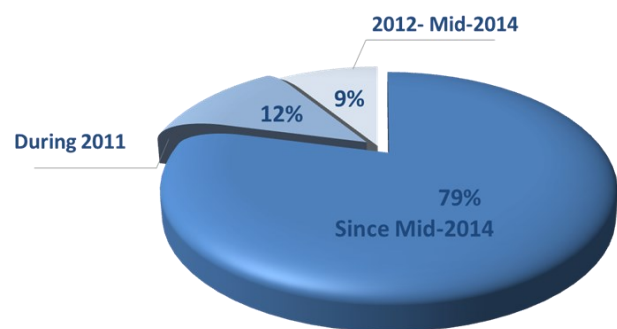


Chart 1: IDPs by time of displacement

Below tables show the size of displacement by areas of former residence (displacement origin), and areas of current residence **since the beginning of 2011**.

2

OVERVIEW OF INTERNAL DISPLACEMENT

KEY POINTS

- MAJORITY OF DISPLACEMENT ORIGINATED FROM BENGHAZI, TAWERGHA, DERNA, SIRTE, AWBARI, AND KIKLA
- MAJORITY OF THE IDENTIFIED IDPs ARE CURRENTLY IN AJDABIYA, AL BAYDA, ABU SALIM, TOBRUK, BANI WALED, AND TUKRA

Table1 : Distribution of identified IDPs by area of origin

Area of Origin (former residence)	% of IDP HH who left the area	Area of Origin (former residence)	% of IDP HH who left the area
1 Benghazi	35.3%	10 Janzour	1.5%
2 Tawergha	12.7%	11 Misratah	1.3%
3 Derna	10.5%	12 Yefren	1.0%
4 Sirte	9.6%	13 Dirj	0.8%
5 Awbari	7.4%	14 Qasr Bin Ghashir	0.8%
6 Kikla	5.1%	15 Garyan	0.7%
7 Tripoli	4.8%	16 Al Mayah	0.6%
8 Al Kufrah	2.6%	17 other	1.4%
9 South Zawiyah	1.5%	18 Unkown	2.2%

About one third (35.3%) of IDPs identified during the initial DTM round originated from Benghazi. The second and third largest area of origin are Tawergha (12.7%) and Derna (10.5%). Sirte, Awbari, Kikla and Tripoli, along with Al Kufrah, South Zaqiya and Janzour are among the top 10 areas of origin. The top four areas of origin (Benghazi, Tawergha, Derna and Sirte) combined account for more than two thirds (68.1%) of the identified IDP population .

Table2: Distribution of identified IDPs, by area of current residence (showing 30 areas which host largest IDP numbers, representing 80% of total identified IDP population)

Area of current Residence	IDPs	% of total	Area of current Residence	IDPs	% of total
1 Ajdabiya	31,750	11.8%	16 Al Khums	4,390	1.6%
2 Al Bayda	22,500	8.4%	17 Derna	4,380	1.6%
3 Abu Salim	20,000	7.4%	18 Umm ar Rizam	4,000	1.5%
4 Tobruk	17,205	6.4%	19 Slukh	4,000	1.5%
5 Bani Waled	15,000	5.6%	20 Al Kufrah	3,200	1.2%
6 Tocra	7,520	2.8%	21 Qaminis	3,180	1.2%
7 Tarhuna	7,150	2.7%	22 Ain Zara	2,910	1.1%
8 Al Qubah	6,855	2.6%	23 Awbari	2,850	1.1%
9 Zliten	6,820	2.5%	24 Ghat	2,810	1.0%
10 Sabha	6,550	2.4%	25 Al Aziziyah	2,750	1.0%
11 Al Jufrah	6,125	2.3%	26 South Zawiyah	2,650	1.0%
12 Janzour	6,095	2.3%	27 Al Ajaylat	2,650	1.0%
13 Al Ghurayfah	5,765	2.1%	28 Murzuq	2,600	1.0%
14 Al Marj	5,000	1.9%	29 Al Sharqiyah	2,540	0.9%
15 Az Zawiyah	4,850	1.8%	30 Sawani Bin Adam	2,500	0.9%

2

OVERVIEW OF INTERNAL DISPLACEMENT

KEY POINTS

- MAJORITY OF DISPLACEMENT ORIGINATED FROM BENGHAZI, TAWERGHA, DERNA, SIRTE, AWBARI, AND KIKLA
- MAJORITY OF THE IDENTIFIED IDPs ARE CURRENTLY IN AJDABIYA, AL BAYDA, ABU SALIM, TOBRUK, BANI WALED, AND TUKRA

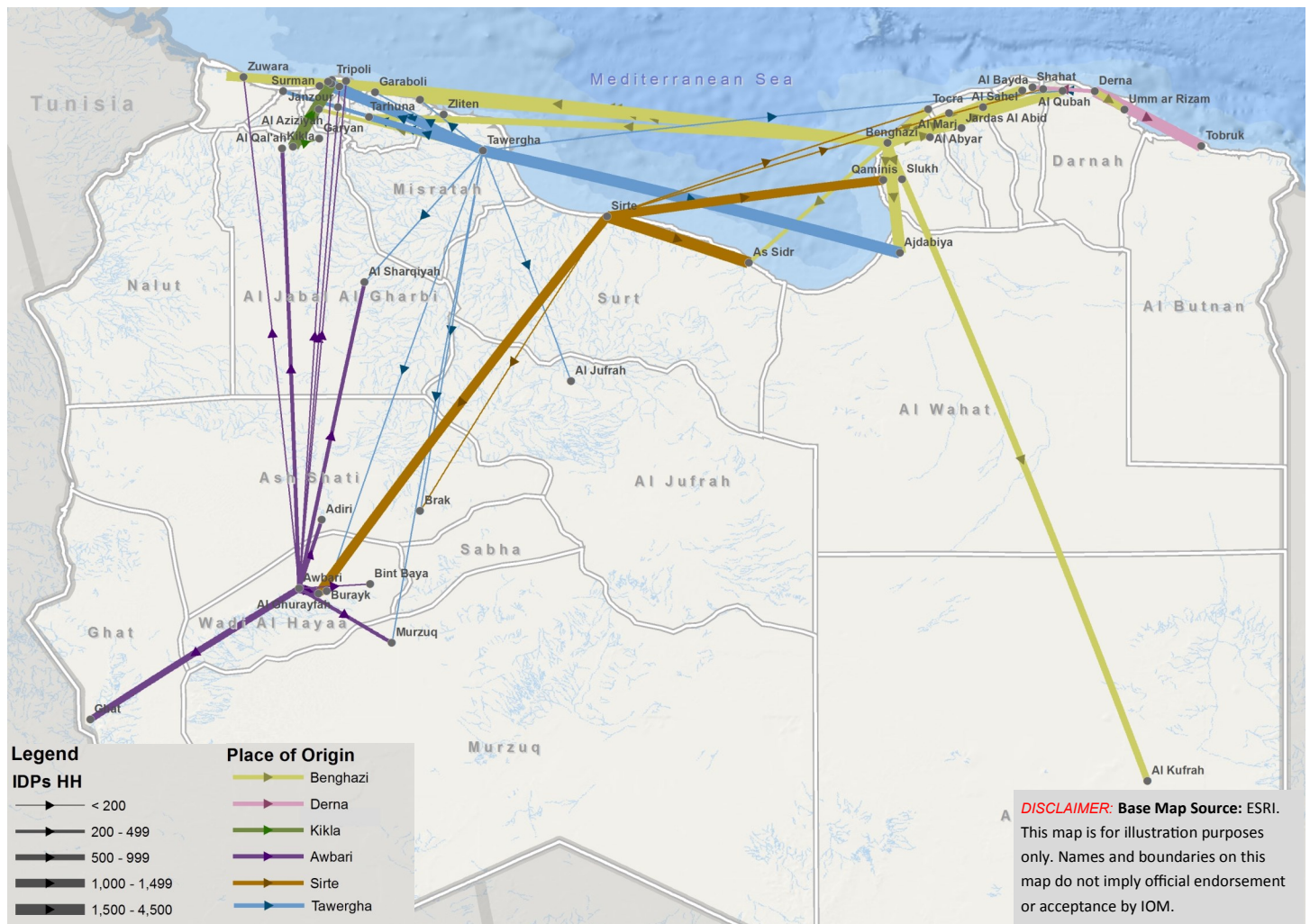
With 31,750 IDPs currently present, Ajdabiya hosts the largest share (11.8%) of identified IDPs. It is followed by Al Bayda with 22,500 IDPs (8.4%), Abu Salim with 20,000 IDPs (7.4%) and Tobruk with 17,205 IDPs (6.4%). Combined, these four locations account for just over one third (34%) of the total identified IDP population. Bani Waleed, Tocra, Tarhuna, Al Qubah, Zliten and Sabha are also among the top 10 areas identified as hosting IDP populations. The 30 areas shown in the table above jointly account for 80 % of the total identified IDP population.

Reportedly, many IDPs had to move twice, three or even four times in their search for sufficient shelter and better

living conditions. Most IDPs had to cross into other baladiyahas to find refuge (95%), while only 5% of the total identified IDP population was displaced within their areas of former residence such as Derna, Janzour, Sabha, Benghazi and Adiri.

Below map shows major displacement patterns which occurred since 2011 until now. It highlights IDPs' areas of former residence (displacement origin), particularly six areas from which the largest IDP populations originated and IDPs' final destination (current residence). The map represents 80% of the total identified displaced population.

Map B: IDP movement from areas of origin to areas of current residence



2

OVERVIEW OF INTERNAL DISPLACEMENT

KEY POINTS

- RENTED AND HOSTED ACCOMMODATION ARE BY FAR THE MOST COMMON IDP ACCOMMODATION TYPE
- 22 AREAS (24% OF ASSESSED AREAS) HAVE IDPs LIVING IN UNFINISHED/ ABANDONED BUILDINGS; 20 AREAS (22%) HAVE IDPs LIVING IN PUBLIC BUILDINGS, AND 11 AREAS (12%) HAVE IDPs LIVING IN SCHOOLS

IDP SHELTER TYPE

The majority of IDPs in Libya have been found to live in urban areas, a pattern that is likely related to the relatively better access to basic services and income opportunities. In urban areas, the majority of IDPs prefer private accommodation options such as renting houses/ apartments, or living with host families of relatives and/ or friends. Rented accommodation was the most common shelter type identified, either paid by IDPs themselves (in 82 areas) or paid by others (in 8 areas). People living with host families (relatives or non-relatives) were also very common, found in 64 and 32 of the assessed areas respectively. IDPs in such accommodation settings usually enjoy relatively better shelter conditions than others in collective and/or non-formal settings, however they can be under higher financial pressure to pay rents or to support host families. IDP populations in urban areas and particularly those who reside in private accommodation settings tend to be harder to track.

Some IDP groups live in a more critical condition when taking shelter in schools, public buildings, unfinished buildings, or in irregular and random collective settings.

Critical shelter types are often not equipped with necessary items to provide protection for individuals living within, not providing basic water, sanitation, hygiene, electricity, and other services necessary to create a dignified, safe and healthy environment.

For example, IDP groups live in school buildings mostly in areas of Benghazi, Al Bayda, Tobruk, Al Ajaylat, Al Asabiah, Al Harabah, Al Qal'ah, Bir al Ashhab, Umm Saad, and Al Qubah. Field reports indicate that IDP households share living spaces, communal spaces and toilets. The lack of privacy and the possibility of eviction

pose additional stress factors. Some of these public buildings are not equipped to host families and lack minimal standards for basic services.

Another common shelter option is to trespass and settle in unfinished or abandoned buildings/ houses. A quarter (22) of IDP hosting areas included IDPs hosted in unfinished buildings. Once again, often lacking basic safety and protection measures, as well as basic services and appliances; this form of shelter setting can be seen in areas of Abu Salim, Adiri, Al Ghurayfah, Al Harabah, Al Marj, Al Qal'ah, Al Qayqab, Al Shaqeqah, Al Sharqiyah, AlShwareef, Ar Rujban, Awbari, Benghazi, Bint Baya, Mizdah, Nasmah, Sabha, Sidi al Saeh, Suq al Khamis, Taraghin, Tarhuna, Yefren, and Ziltan.

Abandoned resorts which once used to be managed by foreign companies prior to the 2014 escalations of violence, have become a special type of abandoned building. They perhaps provide the best standards across all IDP shelter types in regards to facilities; however tend to be distant from the public areas, market places, and health facilities, hence, not the most sufficient in regards to access to public services and job opportunities. These resorts are found in areas of Al Khums, Benghazi, Hai Alandalus, Janzour, Qaminis, and Shahat.

In the area of Abu Salim, Adiri, Ajdabiya, Al Qal'ah, Bani Waled, Tajoura, and Al Jufrah another common setting are irregular and random makeshift houses, where IDP groups have arrived to publicly owned land and started building random non-durable shelters. These are usually the worst of all critical shelter forms; they are extremely difficult to manage and maintain, and poor in regards to basic standards.

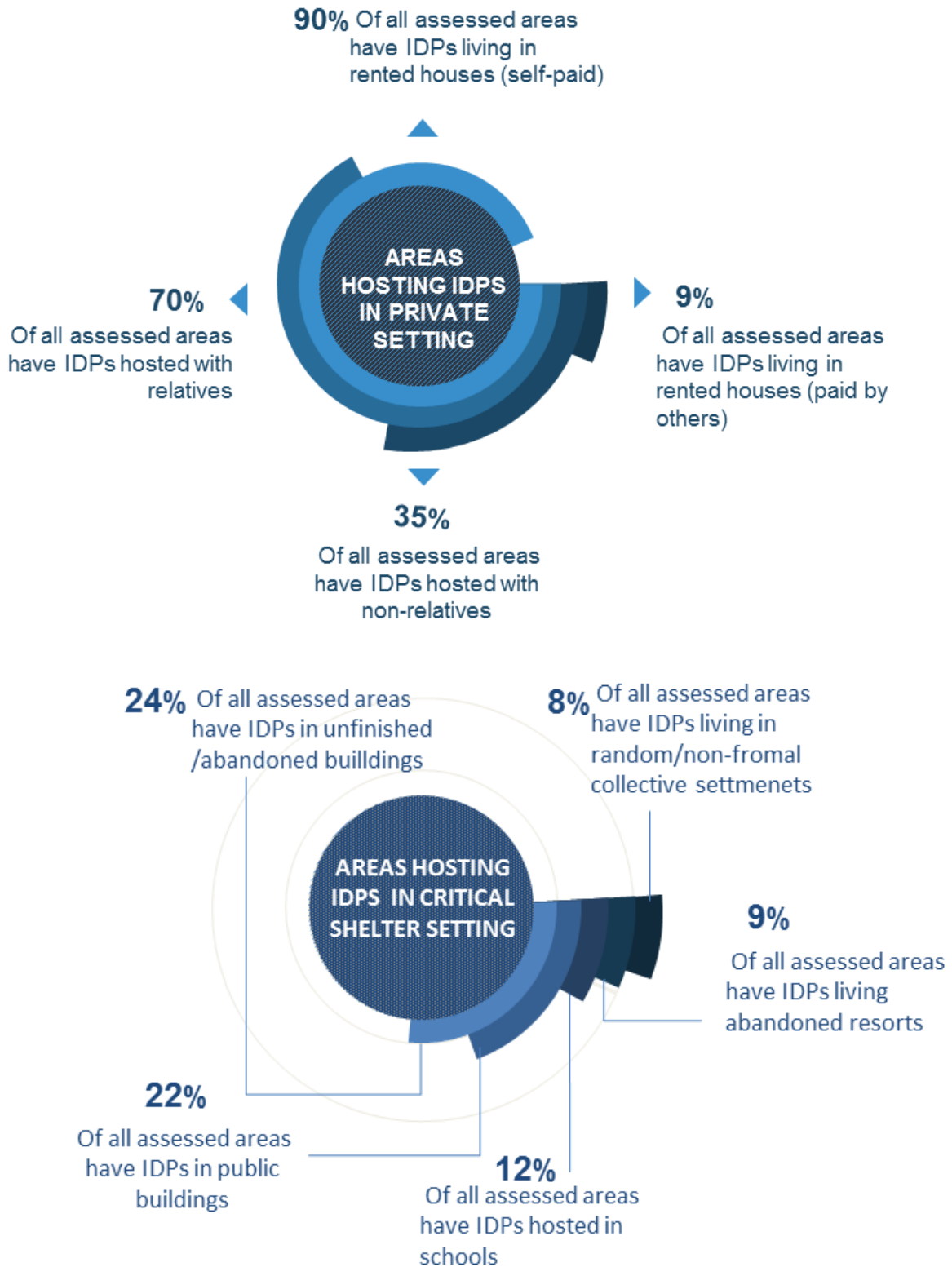
2

OVERVIEW OF INTERNAL DISPLACEMENT

KEY POINTS

- RENTED AND HOSTED ACCOMMODATION ARE BY FAR THE MOST COMMON IDP ACCOMMODATION TYPE
- 22 AREAS (24% OF ASSESSED AREAS) HAVE IDPS LIVING IN UNFINISHED/ ABANDONED BUILDINGS; 20 AREAS (22%) HAVE IDPS LIVING IN PUBLIC BUILDINGS, AND 11 AREAS (12%) HAVE IDPS LIVING IN SCHOOLS

Chart 2: IDP accommodation types in assessed areas



IDP SHELTER TYPE

3

OVERVIEW OF RETURN

KEY POINTS

- 71% OF THE IDENTIFIED RETURNEE POPULATION ARRIVED FROM OTHER AREAS WITHIN THE COUNTRY
- 12% OF THE IDENTIFIED RETURNEE POPULATION ARRIVED FROM OUTSIDE THE COUNTRY
- MOST OF RETURN MOVEMENTS TOOK PLACE IN 2014 AND 2015

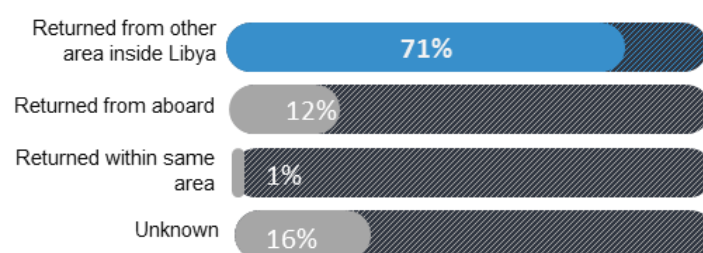
Findings to date suggest that most of the IDPs are not able to return to their former areas of residence for reasons related to their safety and security, access and condition of their houses and assets (destroyed, damaged, or squatted by others), access to and sufficiency of basic services in locations of origin, and the acceptance of the community.

Whilst barriers to a smooth and sustainable return persist, return waves have occurred throughout the past few years, especially in 2014 and 2015, despite continued violence. During the initial round, DTM identified 130,637 returnees (26,126 Households) in 19 assessed areas, the majority of whom were internally displaced, with a smaller proportion (12%) of returnees from abroad. Future rounds of DTM will strive for more comprehensive coverage of all returnee-hosting areas.

IDP returns have occurred in a context where there is often an absence of adequate resources and assistance to rebuilt livelihoods. In such contexts, returns can fail and

result in repeated displacement within the country or even across international borders. An example is the recent return wave to the Gwaleesh community of IDPs who were displaced for the past 5 years. Once returned, many were pushed to flee their homes again as they could not provide safety for their families, or afford to renovate their destroyed houses, and found insufficient access to basic services related to Health, education, WASH and others .

Chart 3: Returnees by type of arrival



Below is the distribution of returnees by areas of return and areas of displacement (for the assessed areas in DTM Round 1):

Table3 : Distribution of identified Returnees by area of Return

Area of Return	Returnees	% of Returnees total	Area of Return	Returnees	% of Returnees total
1 Al Jabal Al Gharbi	35,000	26.80%	11 Al Jifarah	1,000	0.80%
2 Al Jifarah	20,250	15.50%	12 Al Jifarah	1,000	0.80%
3 Tripoli	20,000	15.30%	13 Al Jabal Al Gharbi	600	0.50%
4 Az Zawiyah	17,500	13.40%	14 Az Zawiyah	500	0.40%
5 An Niquat Al Khums	15,000	11.50%	15 Wadi Al Hayaa	350	0.30%
6 An Niquat Al Khums	7,500	5.70%	16 An Niquat Al Khums	300	0.20%
7 Tripoli	5,960	4.60%	17 Az Zawiyah	175	0.10%
8 Al Jabal Al Gharbi	2,500	1.90%	18 Sabha	125	0.10%
9 Al Jabal Al Gharbi	1,750	1.30%	19 Tripoli	110	0.10%
10 Darnah	1,017	0.80%	Total	130,637	100.00%

4

OVERVIEW OF MIGRATION

KEY POINTS

- DTM IDENTIFIED 114,770 MIGRANTS IN 50 AREAS IN LIBYA
- ONLY 4% OF THE IDENTIFIED MIGRANTS ARE ESTIMATED TO BE HOSTED IN DETENTION CENTERS

MIGRATION PATTERNS

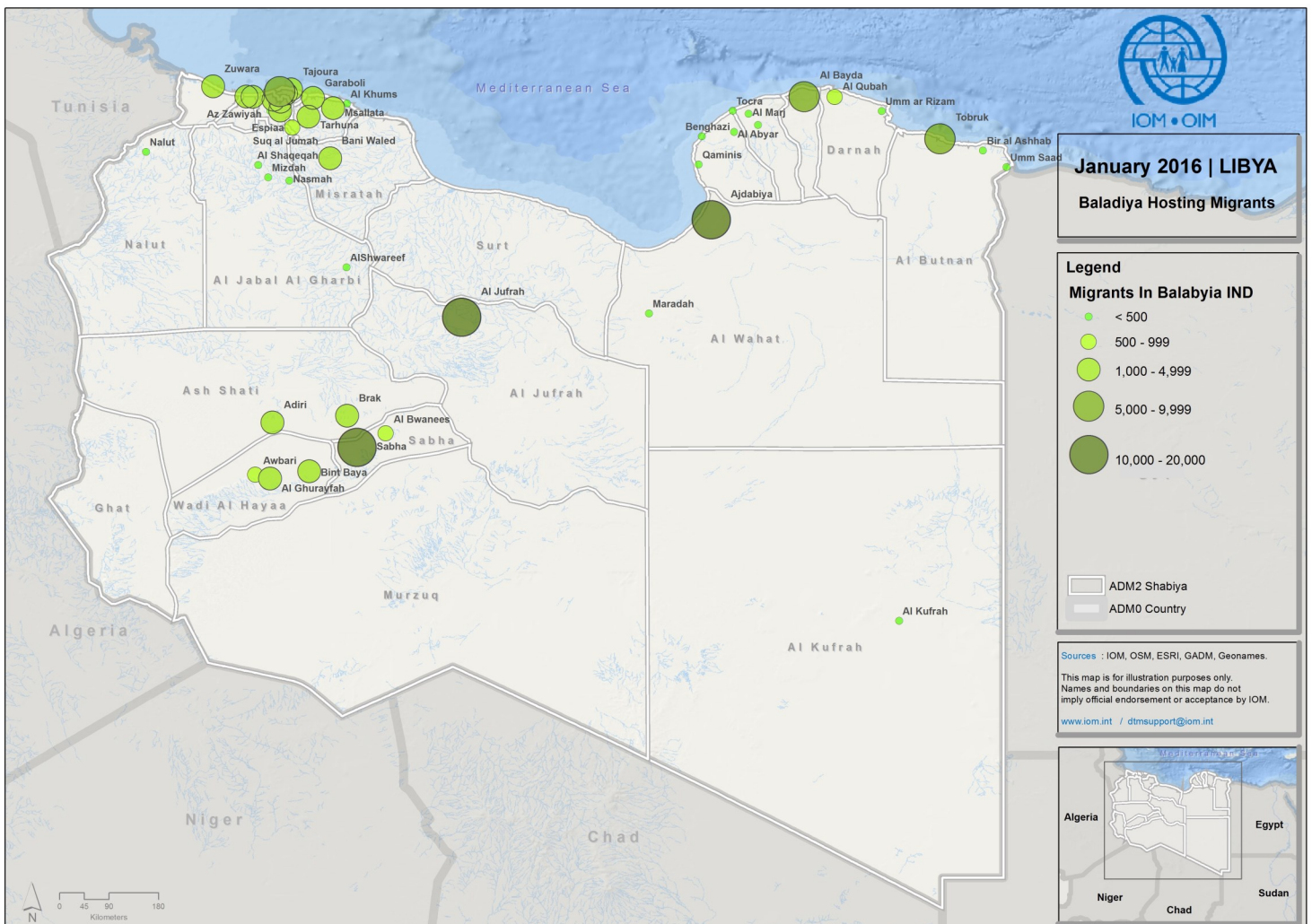
Despite the ongoing conflict, Libya also constitutes a key country of transit and destination for migrants. Irregular migration flows originating from different parts of the continent culminate in Libya, where people either try to stay and establish livelihoods, or attempt to cross the Mediterranean to reach European shores.

In 2015, Italy saw the arrival of over 150,000 migrants by sea, an estimated 80-85% of whom travelled via Libya. Main countries of origin included Eritrea, Nigeria and Somalia, which combined account for nearly half of all arrivals, with significant numbers (between 9,000 and 5,000 each) also origi-

nating from Sudan, Gambia, Syria, Senegal, Mali and Bangladesh. The majority (75%) of arrivals were adult men, whilst 11% of arrivals were children (3% accompanied, 8% unaccompanied), and 14% were adult women.

In an attempt to identify key routes and transit points in Libya, the initial round of DTM identified 114,770 migrants in 50 areas in Libya (55% of all areas covered in the assessment), mainly in the southern and coastal areas. Only 4% of the identified migrants are estimated to be hosted in Detention centers, while the majority are taking shelter in informal collective settlements, farms, market places (shops) or other types of private settings.

Map C: Migrants by area of current residence



4

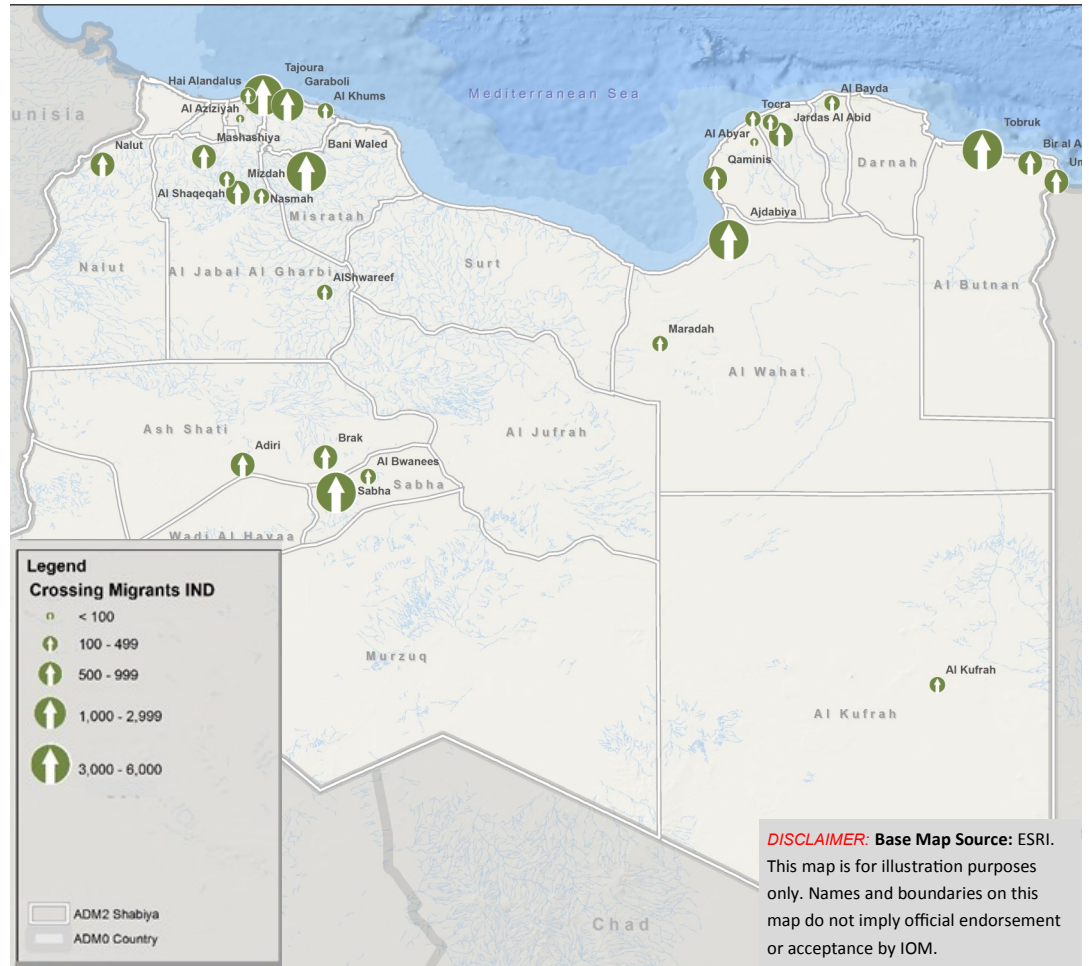
OVERVIEW OF MIGRATION

KEY POINTS

- DTM IDENTIFIED 28 MIGRANTS TRANSIT AREAS IN LIBYA
- BIGGEST TRASIT POINTS ARE COASTAL AREAS OF AJDABIYA, TAJOURA, BANI WALED, GARABOLI, TOBRUK, IN ADDITION TO THE SOUTHERN SABHA

MIGRANT TRANSIT/FLOW POINTS

Moreover, 28 areas are reported to have experienced migrants crossing in an observation period between mid-November and mid-December 2015, hence considered as flow points or transit points for migration; mostly in coastal areas and surroundings such as Ajdabiya, Tajoura, Bani Waled, Garaboli, Tobruk, in addition to the southern Sabha.

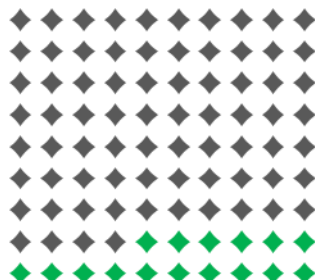


Map D: Identified Migrant transit areas

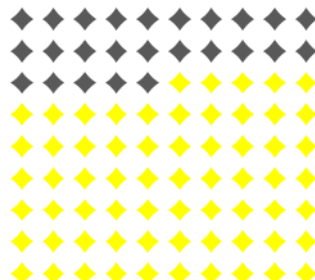
CREDIBILITY OF DTM DATA

Through DTM's methodology to rate the credibility of data collected from different Key Informants (KIs), data was considered very credible in 17% of the 91 assessed areas in the first round. For the majority of areas (71%) the data captured was considered mostly credible, whilst only a few of the assessed areas were considered as having somehow credible (8%) or low credible (4%) data.

Very Credible
16/91



Mostly Credible
65/91



Somehow Credible
7/91



Low Credibility
4/91



5

CREDIBILITY OF DATA

6

METHODOLOGY OF DTM

Subtitles:

- POPULATIONS OF CONCERN
- GEOGRAPHIC COVERAGE: DEFINITION OF AREA, LOCATION AND SITE

DTM METHODOLOGY

DTM facilitates the collection and dissemination of solid data on the numbers and locations of IDP populations; as well as irregular migration flows to, through and from Libya. The DTM aims to inform the humanitarian response in Libya by identifying priority needs and regularly providing updates on how the situation develops.

In an effort to build the capacity of local partners and harmonize approaches of data collection on the displaced and migrant population in Libya, IOM successfully trained a selected group of enumerators and team leaders from local NGOs on DTM's Mobility tracking methodology and approach, and managed to launch the first (initial) round of DTM by the beginning of December 2015. The first round of data collection was completed in early January. Different actors served as Key informants: local Crisis Committee representatives, humanitarian and social organizations; community and tribal representatives; representation of displaced groups; other representation from the baladiya office (Social Affairs; Muhalla Affairs; etc.), representatives of education facilities, and representatives of health facilities.

THREE POPULATIONS OF CONCERN are targeted as part of the DTM assessment: IDPs, returnees and migrants.

An **IDP** is any "persons or groups of persons who have been forced or obliged to flee or to leave their homes or places of habitual residence, in particular as a result of or in order to avoid the effects of armed conflict, situations of generalized violence, violations of human rights or natural or human-made disasters, and who have not crossed an internationally recognized state border".

A **returnee** is any person who was displaced internally or across an international border, but has since returned to his/her place of habitual residence.

A **migrant** is any non-Libyan national present in the country. Migrants can include refugees and asylum seekers (fleeing war, conflict, persecution, etc.) as well as individuals who left their homes due to lack of economic perspectives in their places of origin, or who are in Libya to study.

DTM aims to track Migrants irrespective of the causes, voluntary or involuntary, and the means, regular or irregular. The DTM's methodology to track migrants is two-fold, firstly to regularly identify locations and estimates of numbers of migrants currently residing there, and secondly to regularly identify and map transit points where migrants are observed/known to pass through.

The first round of DTM primarily sought to identify such transit points, hence enumerators paid particular attention to migrants originating from Sub-Saharan Africa, travelling in groups, and appearing to form part of irregular migration flows.

Additionally, DTM identified an estimated number of Migrants who passed through/crossed certain location during an observation period of a month, between mid-November and mid-December 2015.

DTM will continue to expand its field network and enhance approaches to track migrants, hoping to gain a more comprehensive picture through additional flow monitoring modules in future DTM rounds.

DEFINITION OF AREA, LOCATION AND SITE

IOM considered each municipality listed in the Elections List of Baladiyas (dated June 2015) as one **area**. Based on this list, there are a total of 104 municipalities in Libya. It is acknowledged that clarifications of administrative divisions in Libya are still ongoing and the number of municipalities is subject to change. As such, the logic underpinning data collection efforts is purely operational and not meant to indicate any endorsement of the current administrative divisions.

The muhalla is considered a **location**. A muhalla can be one village or a small collection of villages in rural settings, whilst in urban settings it equates to a neighbourhood. As with the baladiyas, there are some contestations about the total number of muhallas and how they are administratively linked to the baladiyas. The Bureau of Statistics and Census counts 667 muhallahs of which DTM has adopted. For IOM, the list of muhallas as compiled based on the first round of data collection is used for operational purposes and does not indicate endorsement of administrative boundaries.

6

METHODOLOGY OF DTM

Subtitles:

- GEOGRAPHIC COVERAGE: DEFINITION OF AREA, LOCATION AND SITE
- RATING THE CREDIBILITY OF COLLECTED DATA

A collective **site** is defined as any site which comprise five IDP households or more: these can include, but are not limited to: schools, other public buildings, people's properties (farms, flats, houses), unfinished buildings, and deserted resorts. More dispersed settings which would not be counted as an IDP site in the host community include IDPs staying in rented accommodation (self pay, or paid by others), or in host families with relatives or non-relatives.

The DTM methodology includes baseline assessments at two levels: the area and the location. Both assessments strive to provide a good understanding of IDP and migrant locations and numbers, as well as information on types of residence, demographics, vulnerabilities, reasons for displacement, areas of origin, and time of displacement. IOM decided to undertake the area assessment at the baladiya (municipality) level and the location assessment at the muhalla (village / neighbourhood) level.

AREA ASSESSMENTS

The information collected at the area level includes: Information about outflow and inflow, i.e. displacement originating from the municipality and displacement in the municipality, IDP number estimates (household and individual), identification of settlements within the municipality with displaced populations, location of origin, time of departure/arrival of IDPs, reasons for displacement, and type of displacement locations. The assessment also captures information on the presence of migrants within the concerned municipality and a list of locations where such migrants are known to transit/stay, with an estimate of numbers and locations. The results of the municipality level area assessments, most importantly the indication of the presence of internally displaced and migrant households, is utilized to advise whether or not to continue assessments at the lower level (location assessments).

LOCATION ASSESSMENTS

The data collected at location level includes basic information about the displaced population (number of HH and individual, time of arrival, origin, reason of displacement, type of shelter) as well as a listing of all sites where IDPs are staying. IDP sites, which will be targeted for more detailed assessments in later assessment rounds, were also identified at the location

level. At a later stage, needs analysis for the displaced and host communities (Shelter, WASH, health etc.) may be added to the location assessment forms, as well as a module to capture more detailed information on migrants' presence: estimate on numbers of migrants, countries of origin, demographics (including sex-age disaggregated data), transit points and means of transport. The results of the location assessments are used to verify the information collected at the area level. The location assessment is carried out in all those settlements identified as having IDP populations or migrants in the area assessment form.

RATING THE CREDIBILITY OF COLLECTED DATA

DTM area and location assessments employed a number of indicators to measure the credibility of collected data from various key informants (KIs) in order to rate to which extent the information can be trusted. These indicators measure the similarity of the data provided, its correspondence to expectations based on general available information and knowledge, as well as methods of managing and documenting the data within the same area. . These factors together with the number of KIs involved, and whether field visits and direct observation were used as a method of verification, are used to rate the credibility of the data in each of the assessed areas. A color coding credibility method is used to rate the level of trust towards the data provided by DTM KIs in each area, with green indicating highest credibility rate, followed by yellow for mostly credible data, orange for somehow credible information, and red for low credibility data. With this method in place, DTM aims to enhance and expand its field network, and enable continuous improvement of data credibility.

7

LIMITATIONS AND WAY FORWARD

Subtitles:

- LIMITATIONS: GEOGRAPHIC COVERAGE, DATA VERIFICATION AND CLEAR DEFINITIONS
- WAYS FORWARD: NEXT DTM ROUNDS AND MULTI SECTORIAL SITE ASSESSMENT

LIMITATIONS

Area of coverage

IOM is striving to obtain full country coverage, but is facing some security and access constraints. IOM was able to undertake assessments in 92 out of 104 areas in Libya, of which 88 were identified as having an IDP presence. Another three areas were found to have no IDP presence, whilst one area (Benghazi) had to be excluded due to conflicting numbers being reported which require further verification that could not be completed in time for the first report. Enumerators highlighted the worsened security situation, disrupted communication, limited transportation as result of increased fuel price and limited cooperation from local authorities as challenges preventing full coverage of all IDP and migrant hosting areas

Migrant definition

Enumerators found it difficult to identify migrants at the area level, therefore focusing their efforts on identifying some key crossing points and locations of visible migrant groups, e.g. migrants travelling in groups or originating from sub-Saharan Africa. As such, the migrant numbers identified are not conclusive and only represent a portion of the total migrant population in Libya. Future DTM rounds will strive for a more comprehensive assessment of migrants' presence at both area and location level.

WAY FORWARD

Some operational and technical adjustments were implemented to support overcoming the aforementioned challenges in the following rounds. DTM round 2 resumed as of the beginning of January 2016, for a duration of 2 months (exceptionally) to allow for expanded coverage, which will seek to validate and update baselines collected in round 1, through tracking of IDPs and migrants at the smallest geographic level (muhalla, neighborhood, village) within the identified municipalities, and to collect more details on demographics (sex and age break down). This, along with an expanded network of KIs, will allow for improved data validation and triangulation.

Following the analysis of DTM baselines and building on the data collection and information management activities conducted by different organizations, DTM in coordination with the protection WG and HCT will begin to assess and plan for an in-depth IDP/migrant site assessment comprised of core multi-sectorial indicators by the second quarter of 2016. The assessment will aim to enhance the understanding of sectorial needs and vulnerabilities of the IDP and migrant populations, support a warning system for sectorial attention in specific sites towards affected populations, and hence support a faster and improved response to the most vulnerable. Flow monitoring components may also be established to better capture migration trends throughout Libya.

DTM Partners:



Contact:

DTMSupport@iom.int

Download this report and related datasets at www.globaldtm.info/libya

