

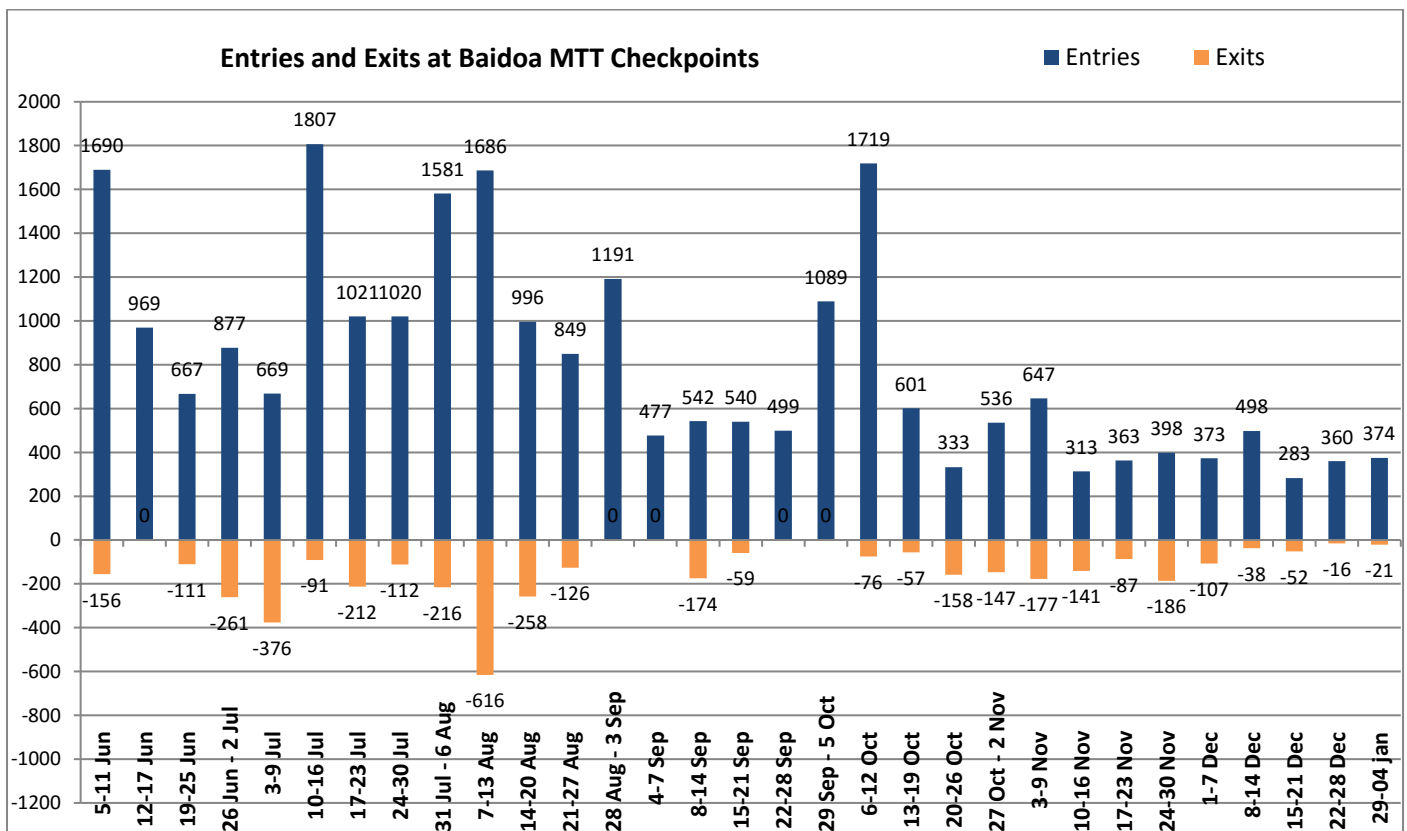


KEY MESSAGES

- This week there were 374 new arrivals and only 21 exits at the Baidoa checkpoints. This represents the fourth week in a row that the number of exits has remained below 100. In general, since mid-November all movements in and out Baidoa IDP sites have remained relatively low compared with previous months.
- All of the new entries cited either insecurity (83%), lack of food (15%) or health (2%) as their reasons for entry.
- The new arrivals came from the districts of Baidoa (67%), Rabdhuure (17%), Xudur District (9%), and Ceel Berde (7%). They said that they intended to move into the IDP sites of Abag Haluul (37%), Hagarka Madigeri (22%), Dooy (17%) and Jera Madshek (24%).
- The 4 households exiting the IDP sites this week said that they were leaving to manage their farms. Three of the households came from Kormari IDP site and the other from Dhalool IDP site. All 4 were heading back to Baidoa District. All of the families said they intend to return back to the IDP sites in Baidoa.



An MTT enumerator interviews a new IDP arriving by donkey cart at a checkpoint outside Baidoa last week. Photo credit IOM.



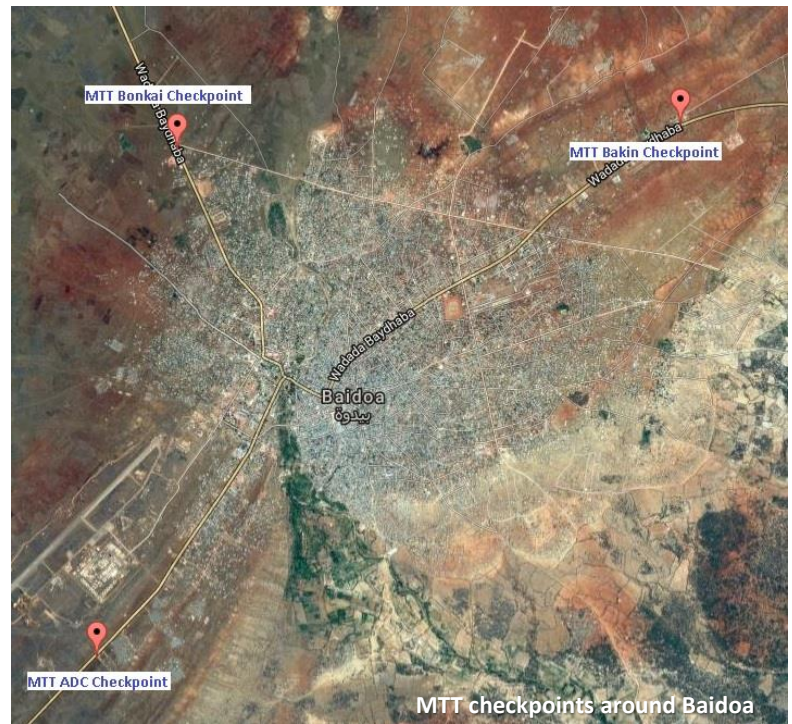
METHODOLOGY

Movement Trend Tracking (MTT) is a movement monitoring exercise that tracks people who are moving in or out of sites on a semi-permanent or permanent basis. MTT aims to gauge the pulse of movements in and out of sites in Baidoa.

MTT figures should not be considered official updates to the population figures of the sites. Rather, the data represents the intentions of IDPs and points towards general trends in their movements.

In Baidoa, IOM enumerators are positioned at the 3 main checkpoints in and out of town (shown on the map on the right) from 6:30am until 5:30pm, 7 days a week.

From these checkpoints, the teams identify people who are moving in or out of Baidoa with luggage. Interviews are done with the individual or the head of household.



MTT aims to complement existing information management products on displacements and movements in Baidoa, by providing site level specific data on population movements on a regular basis, to assist agencies operating in sites and settlements with key information on: demographics of movement, area of origin, area of return/onward movement, reasons for movement and movement trends over time.



IOM MTT enumerators identify new arrivals passing through the Baidoa checkpoints with luggage, and conduct interviews with the heads of household. Photo credit IOM.

Movement Trend Tracking (MTT) - SNAPSHOT
Baidoa

