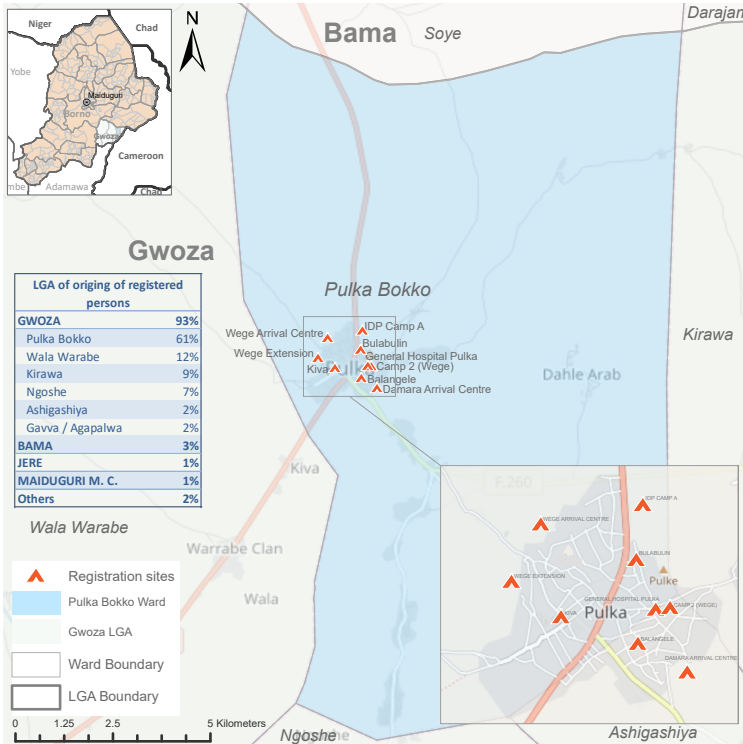
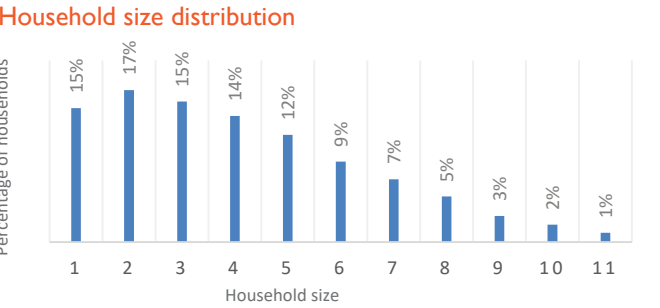
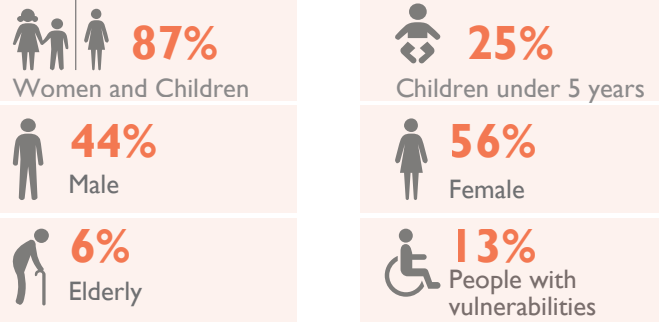


Biometric Registration Update | 22 February 2018



Total Registered
40,878 individuals
9,438 households



Recently concluded Biometric Registration of over 5,000 new arrivals in Pulka, within the period of 16 January – 22 February 2018, has brought the total number of displaced persons in Pulka to 40,878 individuals (9,438 households). The average family size within the location is 4.3, with 32 per cent of families comprising of 1-2 members; 30 per cent comprising of 3-4 members; 21 per cent comprising of 5-6 members; 12 per cent comprising of 7-8 members; and 6 per cent comprising of 9-11 members.

During the registration exercise, the enumerators collected vulnerability data to identify individuals who may require additional humanitarian assistance. Out of the total population registered, 13 per cent are people experiencing at least one of the vulnerabilities (shown below). Vulnerability figures are obtained through interviews with heads of households, in the presence of other family members.

The majority - 93 per cent of the IDPs in Pulka - were displaced from Pulka (61%) and other surrounding wards (32%) in Gwoza Local Government Area (LGA); 3 per cent are originally from Bama LGA; 1 per cent are from Jere LGA; 1 per cent are from Maiduguri LGA; and 2 per cent have been displaced from other locations.

Location details			Total				Male				Female			
Place of registration	Location type	SSID	HH	Ind	Male	Female	0-4 y	5-17 y	18-59 y	60+ y	0-4 y	5-17 y	18-59 y	60+ y
WEGE ARRIVAL CENTRE	Camp	BO_S239	925	3,238	1,403	1,835	428	598	297	80	372	610	771	82
IDP CAMP A	Camp	BO_S112	652	2,606	1,052	1,554	259	589	162	42	282	644	506	122
CAMP 2 (WEGE)	Camp	BO_S224	498	2,329	959	1,370	226	517	176	40	253	615	427	75
WEGE EXTENSION	Camp	BO_S246	467	2,275	939	1,336	243	505	141	50	269	574	436	57
GENERAL HOSPITAL PULKA	Camp	BO_S112	157	534	209	325	49	116	29	15	56	128	119	22
DAMRA ARRIVAL CENTER	Collective Settlement	BO_S110	946	4,623	2,051	2,572	420	981	521	129	447	1,055	955	115
BULABULIN	Host Communities	BO_H122	432	1,835	824	1,011	162	371	234	57	197	388	364	62
BALANGELE	Host Communities	BO_H120	2,219	8,965	4,000	4,965	860	1,800	1,062	278	877	1,859	1,883	346
KIVA_IDP	Host Communities	BO_H118	3,142	14,473	6,601	7,872	1,469	3,225	1,539	368	1,355	3,235	2,850	432
Total registered			9,438	40,878	18,038	22,840	4,116	8,702	4,161	1,059	4,108	9,108	8,311	1,313
Percentage				100%	44%	56%	10%	21%	10%	3%	10%	22%	20%	3%

