

**1.1M** Estimated Individuals affected

**57K** Individuals in accommodation centres

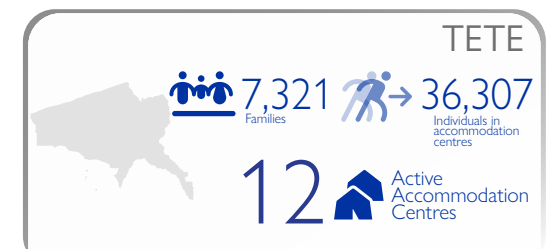
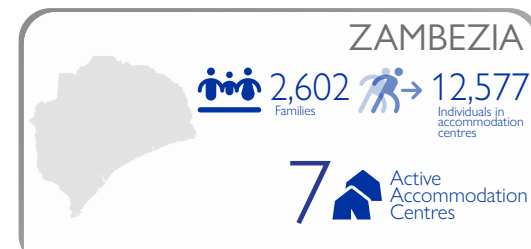
**33<sup>1</sup>** Active Accommodation Centres

Mozambique's National Institute for Disaster Management (INGD) estimates 1,187,265 individuals have been affected by the first and second landfall of Tropical Storm Freddy across Inhambane, Gaza, Zambezia, Sofala and Tete, Niassa and Manica. As of 10 April 2023, rapid assessments across top-affected Postos in Sofala (Caia, Murraça, Sena postos), Niassa (Cuamba, Insaca, Mandimba postos) Tete (Charre, Doa, Inhangoma, and Nhamayabue postos), Manica (Amatongas, Bazua, Cafumpe, Gondola, Guro, Inchope Mungari, Nguawala, Nhacafula, Nhamagua and Nhacolo postos) and Zambezia (Alto Molcue, Milange, Namacurra, Nante, and Nicoadala postos) report at least 527,097 individuals/ 139,155 families affected as well infrastructure damages to 137 schools, and 30 health centres.

Within these assessments 141,788 houses are reported as completely or partially destroyed. Approximately, 103,244 houses are located in Zambezia province (62,096 in Namacurra, 25,437 in Nicodala, 8,897 in Milange, 12 in Alto Molocue, and 6,802 in Nante postos), 25,662 houses are located in Sofala province (20,742 in Sena, 2,987 in Murraça, and 1,933 in Caia postos), 9,414 houses are located in Tete ( 2,202 in Doa, 6,899 in Inhangoma, 140 in Charre, and 173 in Nhamayabue Postos), 3,098 houses are located in Manica (729 in Nhamagua, 221 in Bazua, 498 in Guro, 712 in Mungari, 83 in Nhacafula, 140 in Amatongas, 97 in Cafumpe, 316 in Gondola, 93 in Inchope, 77 in Nguawala, and 132 in Nhacolo postos ) and 370 houses are located in Niassa province (370 in Mandimba posto). The most cited priority needs in these most severely affected postos are for Agricultural assistance/Food aid, closely followed by Shelter/NFIs . The priority need for WASH is slightly lower than for the previous two sectoral needs.

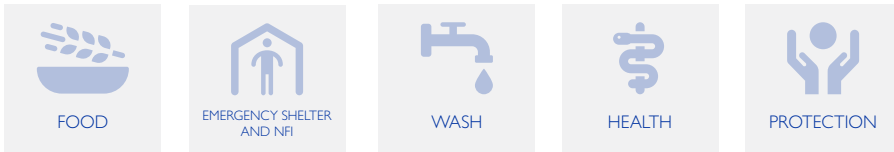
Furthermore, 57,481 individuals (12,274 families) remain displaced across 33 active accommodation centres/temporary displacement locations in Inhambane, Zambezia, Sofala, Tete, and Niassa. To access full accommodation centre list please [CLICK HERE](#).

## TOP DISTRICTS HOSTING THE LARGEST IDP POPULATION IN AC'S

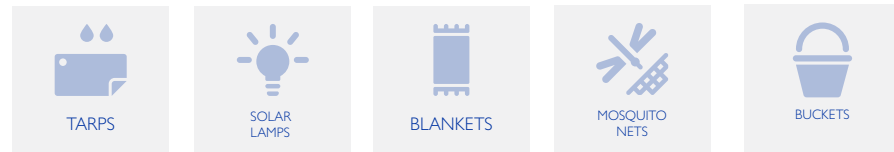


*Also note that several accommodations centres have been identified by the Government (INGD) and this report only captured active centres in Gaza, Inhambane, Tete, Niassa, Sofala and Zambezia.*

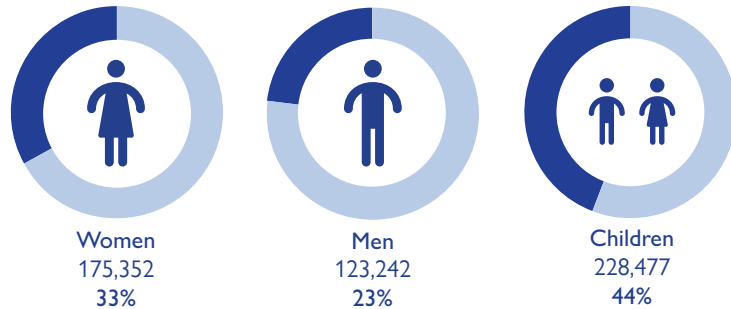
## MOST URGENT NEEDS IN ORDER OF PRIORITY (ASSESSED AT POSTO LEVEL)



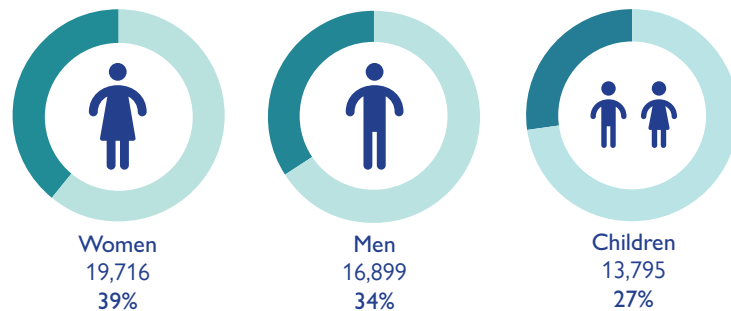
## MOST URGENT NFI NEEDS IN ORDER OF PRIORITY (ASSESSED AT POSTO LEVEL)



## DEMOGRAPHICS OF AFFECTED POPULATION (ASSESSED AT POSTO LEVEL)



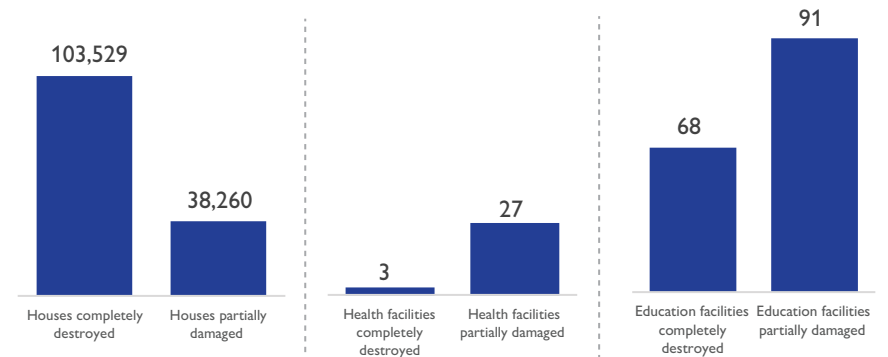
## DEMOGRAPHICS OF ASSESSED DISPLACED POPULATION (IN ACCOMADATION CENTRES AND HOST COMMUNITIES)



## ACCOMODATION CENTRES SUMMARY

PROVINCE	DEACTIVATED ACCOMMODATION CENTRES	DATE OF LAST DEACTIVATION	ACTIVE ACCOMMODATION CENTRES	FAMILIES	INDIVIDUALS
NIASSA	11	6-Apr	9	1,633	5,441
ZAMBEZIA	145	2-Apr	7	2602	12,577
SOBALA	104	2-Apr	3	462	2,243
TETE	32	28-Mar	12	7,321	36,307
INHAMBANE	15	6-Apr	2	256	913
<b>TOTAL</b>	<b>307</b>	<b>-</b>	<b>33</b>	<b>12,274</b>	<b>57,481</b>

## INFRASTRUCTURE DAMAGES



## VULNERABILITIES AMONGST DISPLACED POPULATION (IN ACCOMADATION CENTRES AND HOST COMMUNITIES)

