

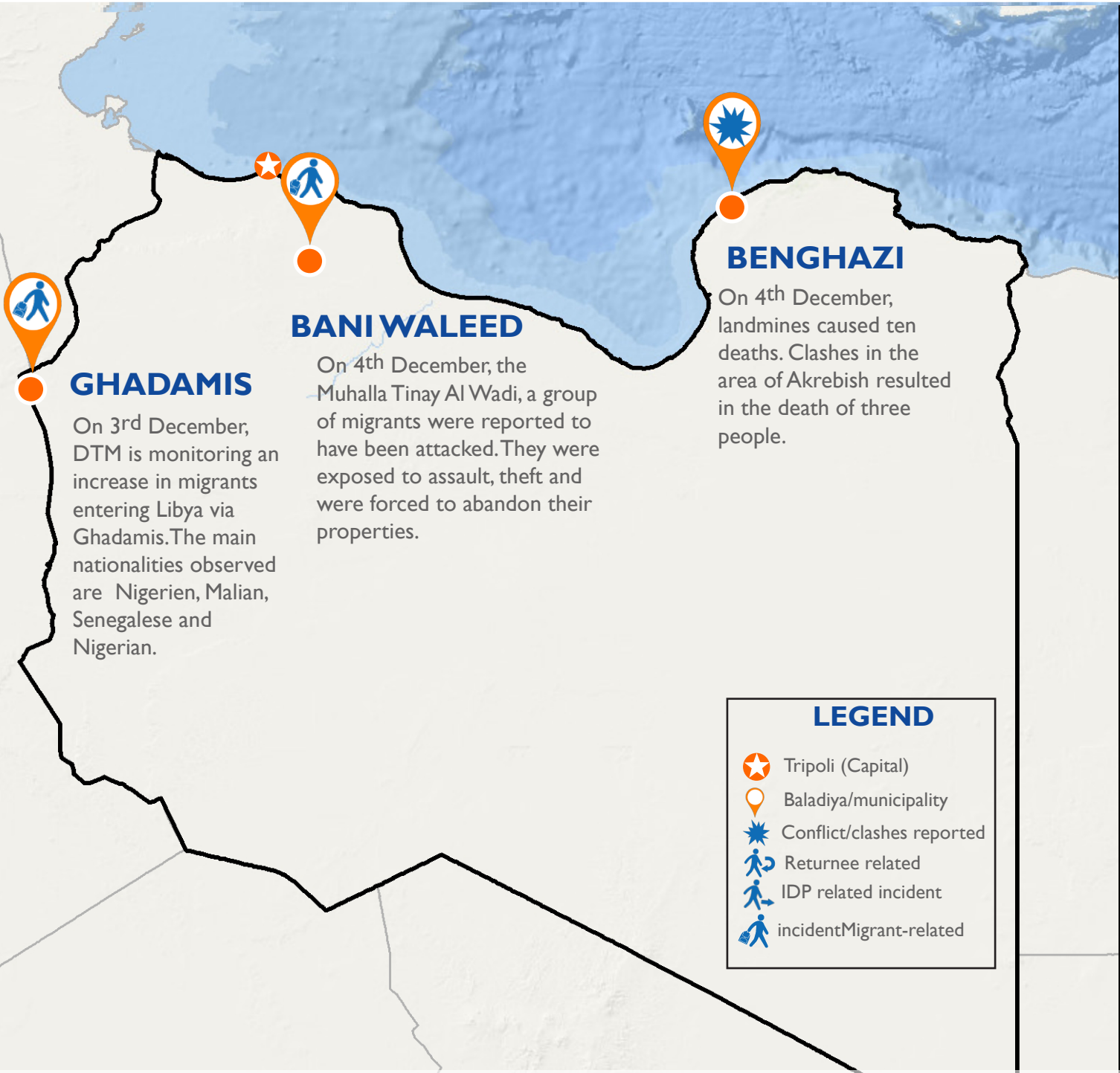


DTM

THE UN MIGRATION AGENCY

DISPLACEMENT EVENT TRACKER - BIWEEKLY UPDATE

3 December - 20 December 2017



The Event Tracker is part of IOM Libya's Displacement Tracking Matrix (DTM) programme. DTM is a suite of tools that provide a comprehensive articulation of Libya's human mobility patterns. The Event Tracker is a biweekly tool collecting and triangulating information on the whole of Libya on any incidents related to IDPs, returnees and migrants, especially in regards to large population movements updates on border closures and new routes. For more information visit www.globaldtm.info/libya.



مؤسسة النسيج الطائفي الأزوي الخيرية



فريق الدعم النفسي الاجتماعي
Psychosocial Support Team



مؤسسة النسيج الطائفي الأزوي الخيرية



المنظمة الدولية للهجرة
منظمة الأمم المتحدة للهجرة
International Organization for Migration
The UN Migration Agency



مؤسسة كفاءة للتنمية
Kafaa Development Foundation



أثر
Leave a story behind



SPOD



Funded by
European Union
Civil Protection and
Humanitarian Aid

Disclaimer: DTM's Event Tracker is sourced through DTM staff and partners and is triangulated with data collected through DTM's Flow Monitoring and Mobility Tracking components. All data reported in the Event Tracker is considered as reported and is validated in all final reports published by Flow Monitoring and Mobility Tracking.