

POPULATION COUNT

Bentiu Town Sites

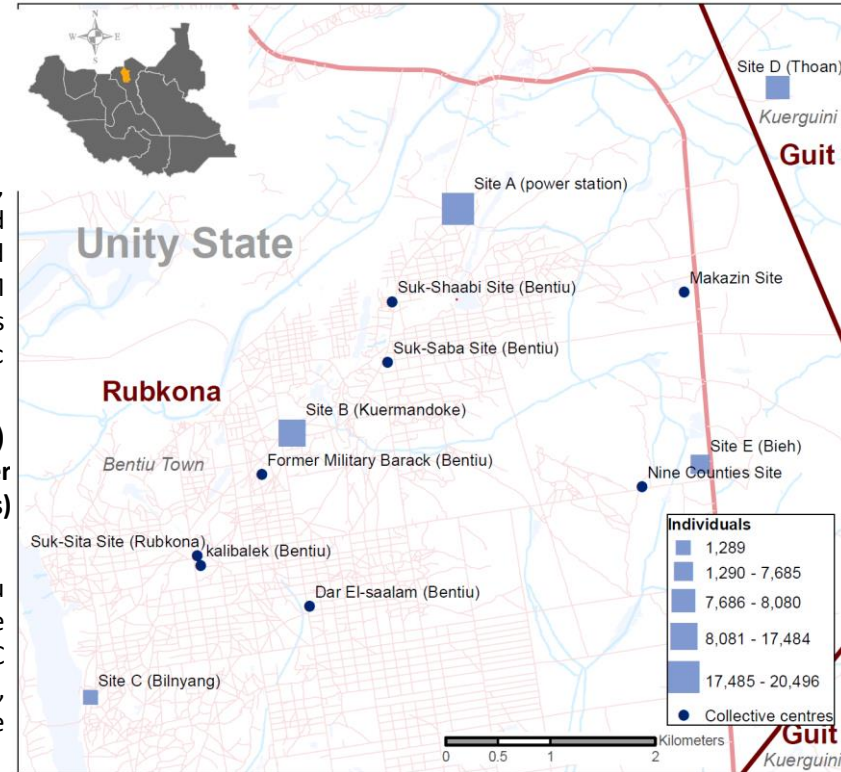
Data collection: January 2023

Population overview (January 2023): 63,022 individuals

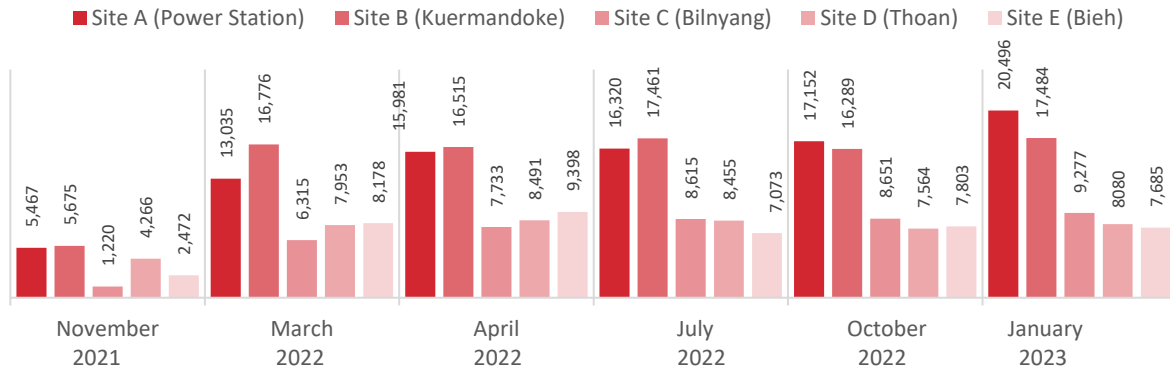
Unity State has been experiencing flooding since 2019 in the counties of Mayendit, Leer, Panyijiar, and Koch. As a result of the flooding in Guit and Rubkona in 2021, Bentiu Town Sites (A, B, C, D, and E) were formed in August 2021. In order to provide accurate information on the Internally Displaced Persons (IDPs), the International Organization for Migration's Displacement Tracking Matrix (IOM DTM) began conducting monthly population counts in November 2021, including questions on areas of habitual residence, areas of displacement, intentions to return or relocate and demographic information to inform partners.

As per January 2023 population count findings, the Bentiu Town Sites (A, B, C, D, and E) population stands at 63,022 individuals / 9,089 households (on average 6 individuals per household). This represents a one per cent decrease (5,563 individuals/237 households) compared to October 2022.

Between 1 November - 31 December 2022, Rapid Flow Monitoring (RFM) at points of entry in Bentiu Town Sites (A, B, C, D, and E) indicates an increase in new arrivals (51%). Forty-nine per cent are found leaving the sites. Most of the increased new arrivals during this period were recorded in Site C (33%), Site D (27%) and Site A (15%), most of whom came from locations within Unity State (99%), with Rubkona County (62%), Guit (32). IDPs arriving at the sites travelled using boats (83%) or came by foot (13%), and other means (4%).



Monthly population trend at Bentiu Town Sites, November 2021 - January 2023*



*In December 2021, January, February, March, August, September, November, and December (2022), IOM was unable to conduct population counts.

Collective Centres recorded in July – January 2023**

Site Name	No. HH	No. Inds
1 Former Military Barack (Bentiu)	279	1,969
2 Makazin Site	229	1,525
3 kalibalek (Bentiu)	114	833
4 Suk-Shaabi Site (Bentiu)	95	671
5 Dar El-Saalam (Bentiu)	83	510
6 Nine Counties Site	63	413
7 Suk-Saba Site (Bentiu)	20	152

** Numbers not included in the overall population count.

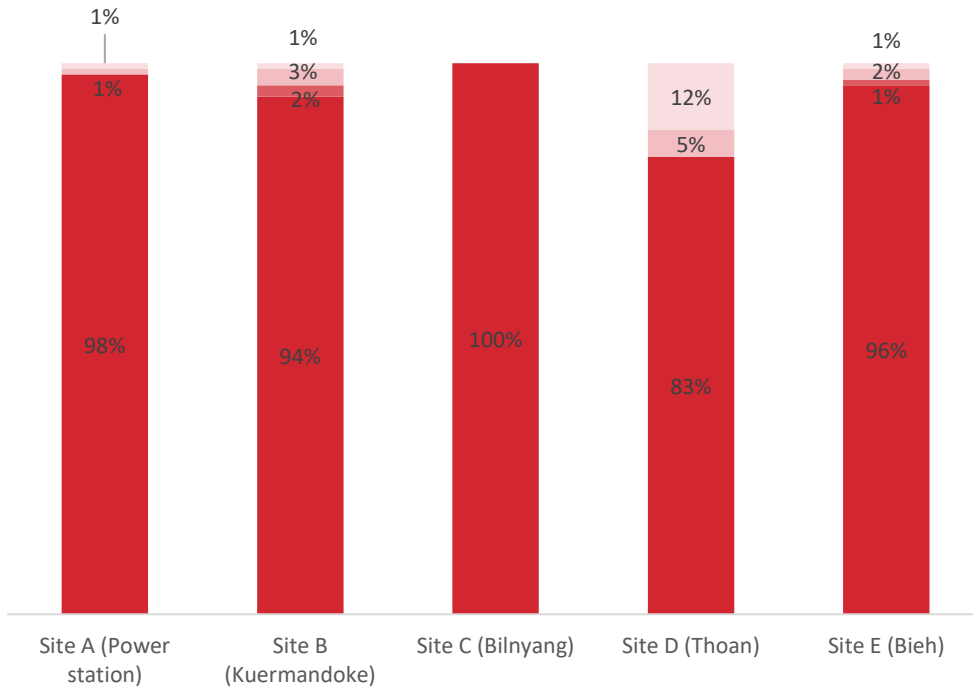


The population count findings for all sites indicate that 98 per cent of the IDPs are arriving from their place of habitual residence. Of these individuals, four per cent (2,298 ind.) intend to leave the sites (93% of those to the same place of origin). Of the IDPs arriving from a different location to their habitual residence (1,406 ind.), 12 per cent intended to leave the site.

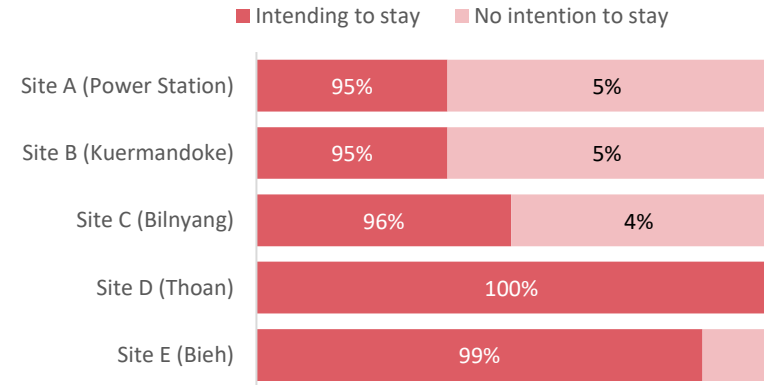
Respondents report the high likelihood of sites getting flooded (2,208 ind.) and a lack of service provision (39 ind.), Insecurity in the area (38), among others (13 ind.), are the main reasons for IDPs intending to leave.

Main reasons for IDPs intending to leave the sites

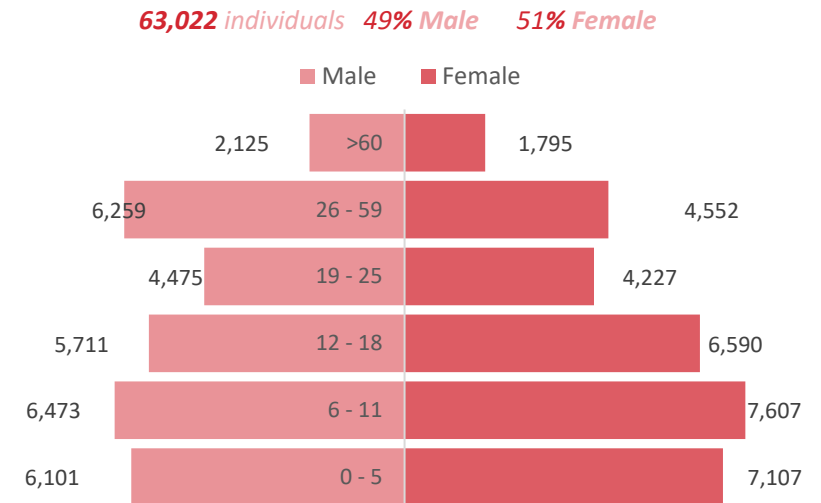
- The area is flooded/likely to get flooded
- Family reunification
- Lack of service provision
- Insecurity in the area



IDPs by their intention to stay at the sites (A, B, C, D and E)

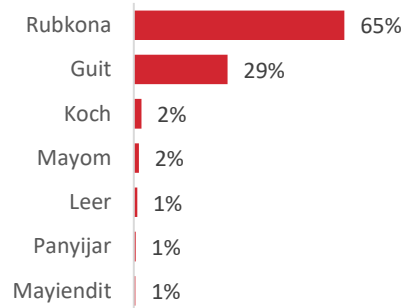


Bentiu Town Sites population by age and sex (January 2023)

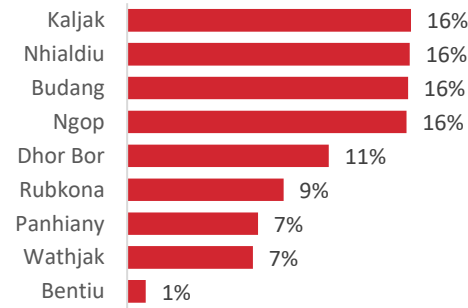




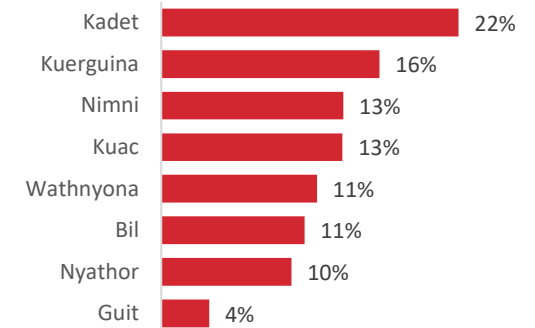
Population by county of displacement



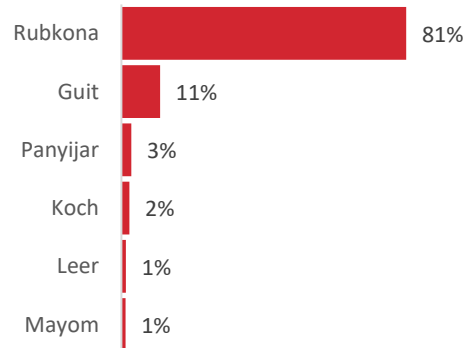
Population displaced from their Payam of origin from within Rubkona County



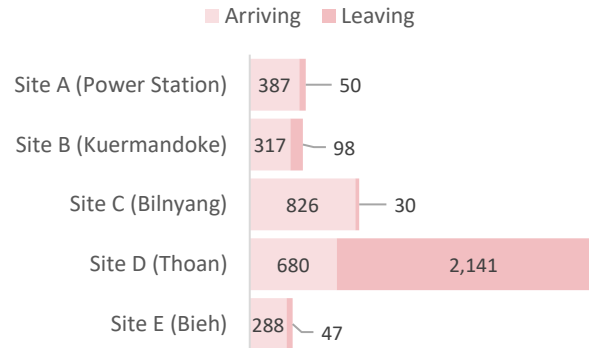
Population displaced from their Payam of origin in Guit County



County of destination for IDPs intending to leave the sites



Individuals interviewed through Rapid Flow Monitoring (RFM) entering and leaving the sites 1 November - 31 December 2022 [n = 4,864]



Means of transportation for ind. interviewed through Rapid Flow Monitoring (RFM) entering and leaving the sites 1 November - 31 December 2022 [n = 4,864]

