



MIGRATION FROM BANGLADESH TO ITALY VIA LIBYA

March 2023

BACKGROUND

In 2022, **15,228 migrants from Bangladesh arrived in Italy** via the Central Mediterranean Route (CMR) with a majority transiting through Libya. Migrants from Bangladesh constituted slightly more than 14 per cent of all arrivals in Italy — the third most-represented nationality.

As of December 2022 (DTM Round 45), there were **21,653 migrants from Bangladesh in Libya** accounting for 3 per cent of the total migrant population in the country — the seventh most-represented nationality. In 2022, a total of **4,448 migrants from Bangladesh were intercepted and returned to Libya** while crossing the Mediterranean Sea. The number of migrants from Bangladesh present in detention centres in Libya also remained high with over **2,000 migrants detained** throughout the year.

This brief outlines the route travelled by migrants from Bangladesh to reach Libya as well as their migratory movements through the Central Mediterranean Route.

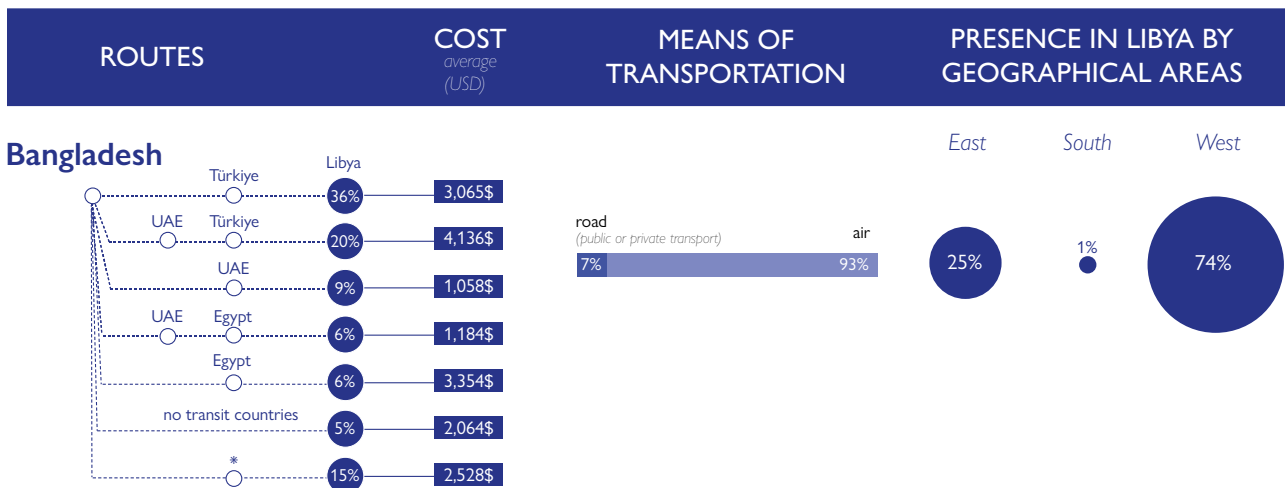
Figure 1: Routes, costs and transportation details of migratory flows from Bangladesh to Libya

JOURNEY AND ROUTES

The majority of migrants from Bangladesh (57%) interviewed in Libya reported having travelled with a group, which included in the majority of cases (59%) non-family members, and in two in five cases (41%) family members or relatives. A total of 43 per cent mentioned having travelled to Libya alone. Nearly all migrants from Bangladesh stated having entered the country through an official port of entry.

Over a third of migrants from Bangladesh interviewed in 2022 (36%) reported having travelled to Libya via Türkiye (Fig 1). A total of 38 per cent had either travelled directly from, or transited via the United Arab Emirates (UAE). A minority (13%) had travelled from Bangladesh via Egypt.

The cost of travel from Bangladesh to Libya ranged from USD 450 to USD 4,889 depending on modes of transport and routes travelled. The onward journey from Libya across the Mediterranean via boat reportedly cost between USD 3,000 to 4,000 per person, often resulting in an average overall total cost of over USD 8,000 to reach Italy from Bangladesh.



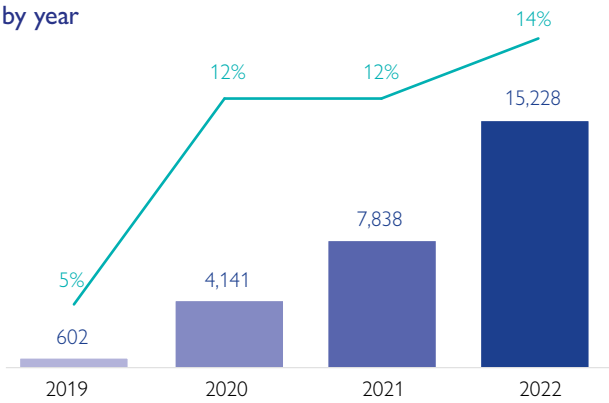
*Multiple routes used that included one or a combination of the following countries: Egypt, India, Jordan, Kuwait, Lebanon, Qatar, Saudi Arabia, the Syrian Arab Republic, Sudan, Türkiye, Tunisia and/or UAE

ARRIVALS TO ITALY

Migrants from Bangladesh have been arriving in Italy via the Central Mediterranean Route (CMR) for several years, with a majority transiting through Libya via multiple routes (Fig 1).

While the number of migrants from Bangladesh arriving in Italy nearly doubled between 2021 and 2022 from 7,838 arrivals to 15,228, the share of migrants arriving from Bangladesh as a proportion of all arrivals remained within two percentage points (Fig 2). This indicates that the rise in the number of Bangladeshi migrants arriving in Italy across the Mediterranean in 2022 may have been related to an overall increase in the number of arrivals and not necessarily to a change in migration routes.

Figure 2: Number of migrants from Bangladesh arriving in Italy and percentage of total arrivals in Italy it represents by year



RETURNS TO LIBYA

Migrants from Bangladesh are also highly represented amongst those intercepted and returned to Libya while attempting to cross the Mediterranean Sea. In 2022, a total of 4,448 migrants from Bangladesh were intercepted and returned to Libya emerging as the top nationality intercepted and returned. The proportion that migrants from Bangladesh represents amongst those intercepted and returned to Libya has also been increasing since 2019 (Fig 3).

Figure 3: Number of migrants from Bangladesh intercepted and returned to Libya and percentage it represents of the total number of migrants returned by year

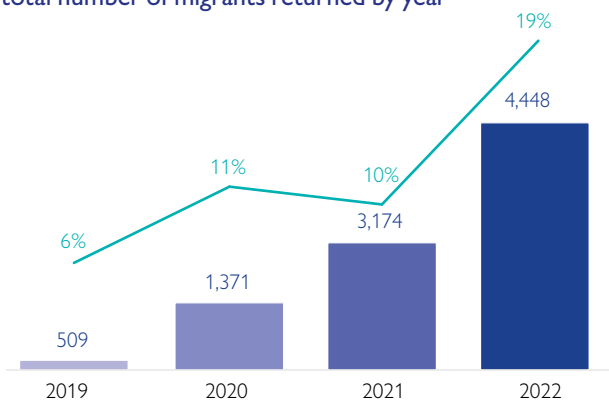
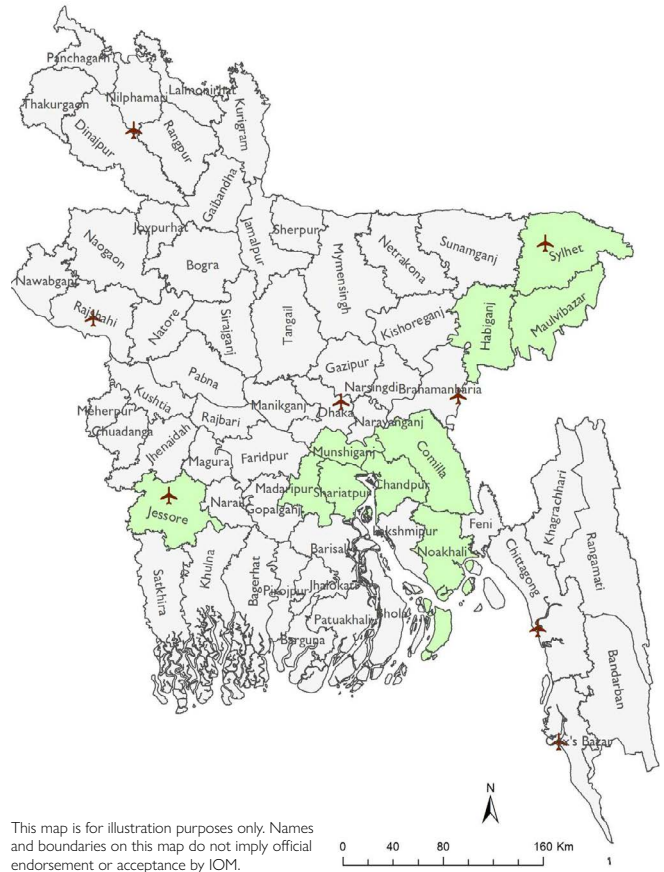


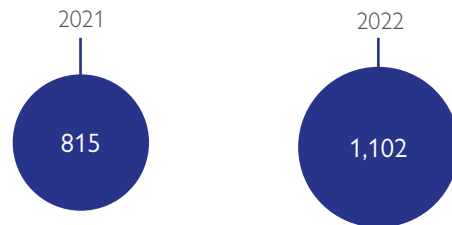
Figure 4: Districts of origin of Bangladeshi migrants to Europe (green)



VOLUNTARY HUMANITARIAN RETURNS FROM LIBYA

In 2022, IOM Libya's Voluntary Humanitarian Return (VHR) programme returned 1,102 vulnerable migrants from Libya to their country of origin of Bangladesh. This marked an increase of 35 per cent year on year from 2021 when only 815 migrants were returned to Bangladesh from Libya through VHR (Fig 5).

Figure 5: Migrants from Bangladesh supported via Voluntary Humanitarian Returns (VHR)



© IOM 2023. Some rights reserved. This work is made available under the Creative Commons Attribution-NonCommercial-NoDerivs 3.0 IGO License (CC BY-NC-ND 3.0 IGO). This publication was issued without formal editing by IOM. The following citation is required when using any data and information included in this information product: "International Organization for Migration (IOM), March 2023. Migration from Bangladesh to Italy via Libya. IOM, Libya."



This publication was made possible through support provided by the Ministry of Foreign Affairs and International Cooperation of Italy. The opinions expressed herein are those of the authors and do not necessarily reflect the views of IOM or the Italian government.