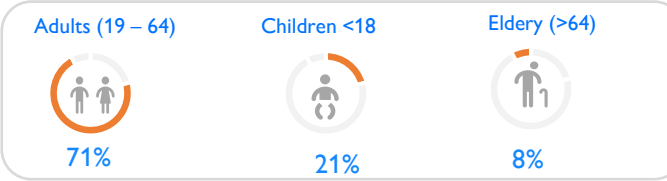


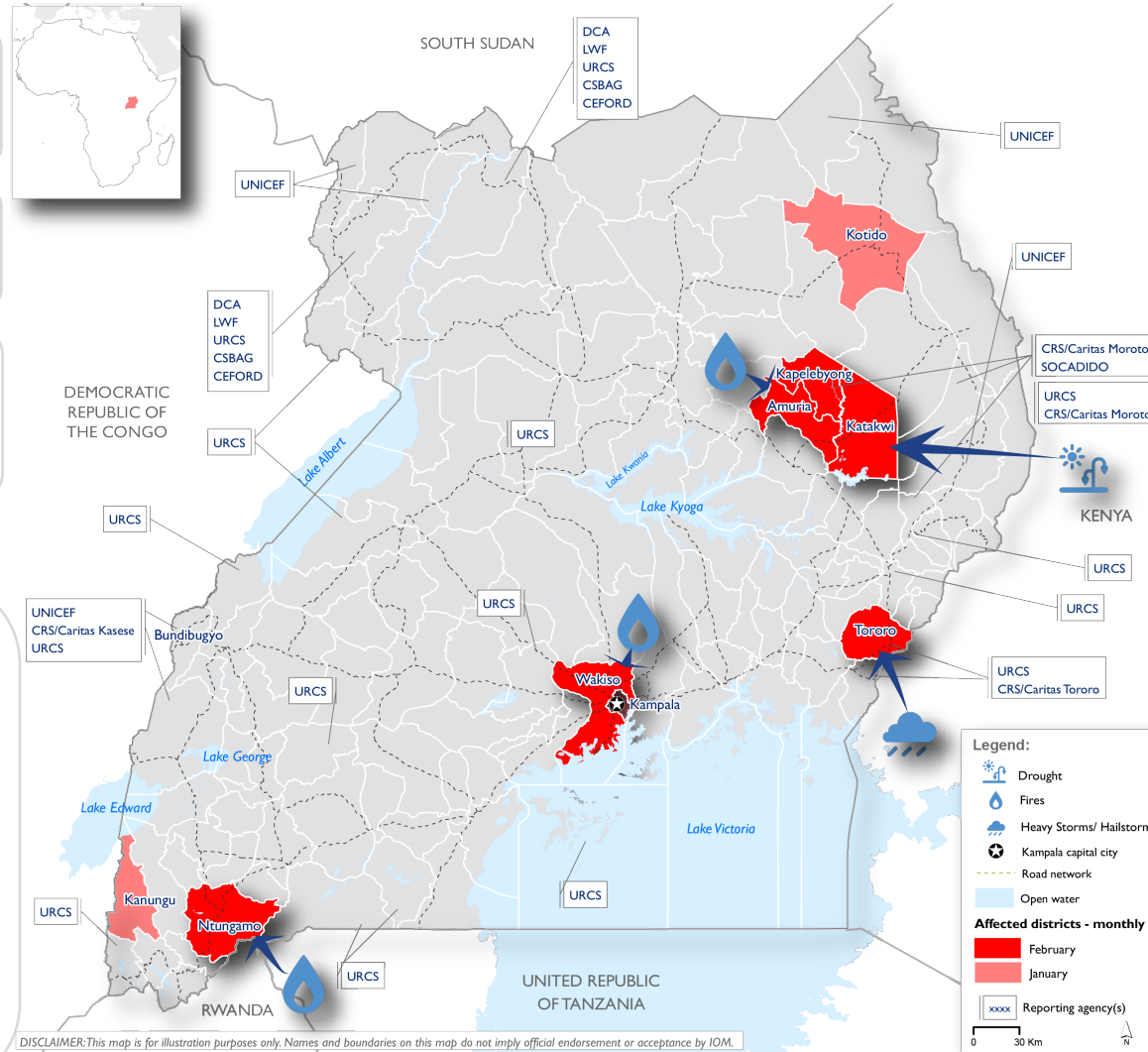


### Overview of affected population - February 2023

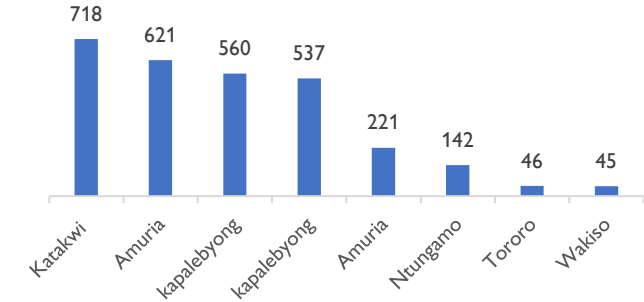


### February 2023 observations

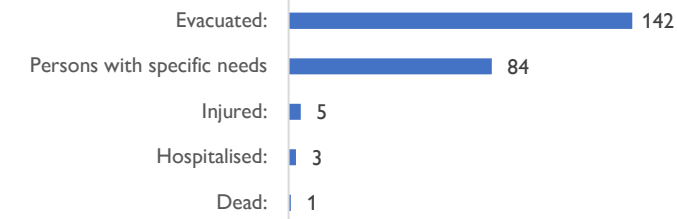
- During the reporting period, drought was reported in the Teso subregion mainly in Katakwi, Amuria and Kapelabyong districts. Fires were experienced in Amuria, Wakiso and Ntungamo while hailstorms were reported in Tororo.
- Disasters in February affected a total of 2,890 individuals, representing 494 households and 198 individuals from 51 households were internally displaced.
- Adults (19-64 years) were the most affected population group (71%), followed by children under 18 years (21%) and the elderly who are above 64 years (8%).
- The most pressing needs are food assistance, livelihood and water supply.
- 56 houses were completely destroyed, 54 water facilities and 2 schools were also affected.
- Following the start of March April and May (MAM) rainfall season, natural disasters are expected to occur and the public is advised to take precautionary measures.



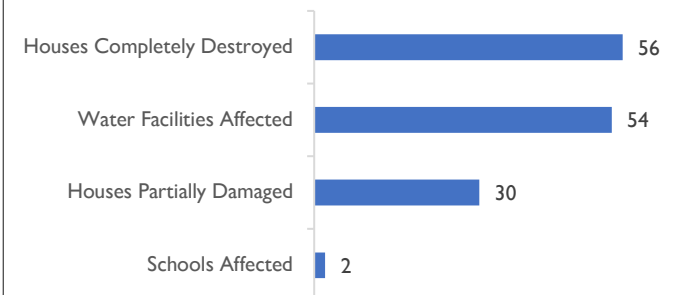
### Affected Districts per disaster



### Disaster Impacts – February 2023



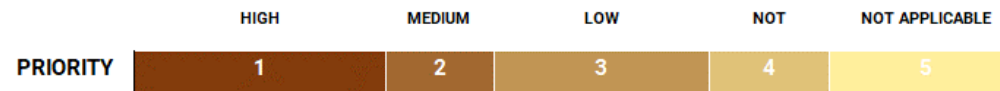
### Disaster Impacts – February 2023



### Data Sources

## Needs rank assessment per Subcounty

District	Subcounty	Health	Water supply	Sanitation	Hygiene promotion	Shelter	Food assistance	Nutrition	Education	NFI	Protection	Child protection	SGBV	Livelihood
Katakwi	Magoro	2	1	2	2	1	1	2	5	2	1	3	3	1
Kapalebyong	Acinga	2	1	2	2	1	1	2	3	2	1	2	2	1
Kapalebyong	okungur	2	1	2	2	2	1	2	3	2	1	2	2	1
Wakiso	kiwante	2	2	1	1	1	1	2	3	1	2	3	3	1
Ntungamo	Ntungamo division	1	2	1	1	2	1	1	3	1	2	2	2	1
Amuria	Orungo	2	2	2	2	1	1	2	5	1	2	3	3	1
Amuria	Abarillela	2	1	2	2	2	1	2	5	2	2	3	3	1
Tororo	Western Division	3	3	3	3	3	3	2	5	3	2	2	3	3



## March April May (MAM) Rainfall Forecast 2023

- Overall, during MAM 2023 the country is expected to experience near normal (near average) to below normal (suppressed) rainfall over several parts of the country. However, some areas of Southwestern, Central and Lake Victoria basin are expected to receive near normal (near average) to above normal (enhanced) rainfall.
- The onset of seasonal rains is expected around early to mid-March in several parts of the southern part of the country (Southwestern, Central and Lake Victoria basin) whereas for the Northern parts of the country it is expected from around late-March to early-April. This onset is likely to be characterized by thunderstorms associated with strong winds, lightning and hailstorms over several parts of the country.

## Advisories – Disaster Management Sector

On the basis of this forecast the following potential disasters are expected; Flash floods, water logging, hailstorms, landslides, lightning strikes and strong winds

- Avoid crossing flooded road sections.
- Desilt drainage systems especially in urban areas.
- Dig / Open drainage channels around households and gardens.
- Districts are advised to update their contingency plans.
- Install and construct water harvesting facilities.
- Review disaster contingency plans.
- Community awareness campaigns should be encouraged.
- Communities in high-risk areas need to be informed in good time including preparations for any planned relocations through authorized institutions.
- Decision-makers should be informed early enough to be able to allocate resources and provide prompt support.

