



Data collection: November 2017

Publication: January 2018

Scope: 6 bomas in Yambio Payam (Yambio County, Western Equatoria)	29,447 IDPs 39,311 returnees 44,293 host community (boma chiefs' records)	13 out of 52 villages deserted (25%)	52% of villages without functioning water point
Major livelihood shocks caused by conflict, livestock diseases, crop diseases and pests	91% of educational facilities operational (49/54); 5 non-operational primary and high schools	8% dropout rate on average (5%-13% on boma level) – conflict as main reason (47%)	12 operational health facilities in 5 bomas but doctors only present in 2 bomas

MAIN RECOMMENDATIONS



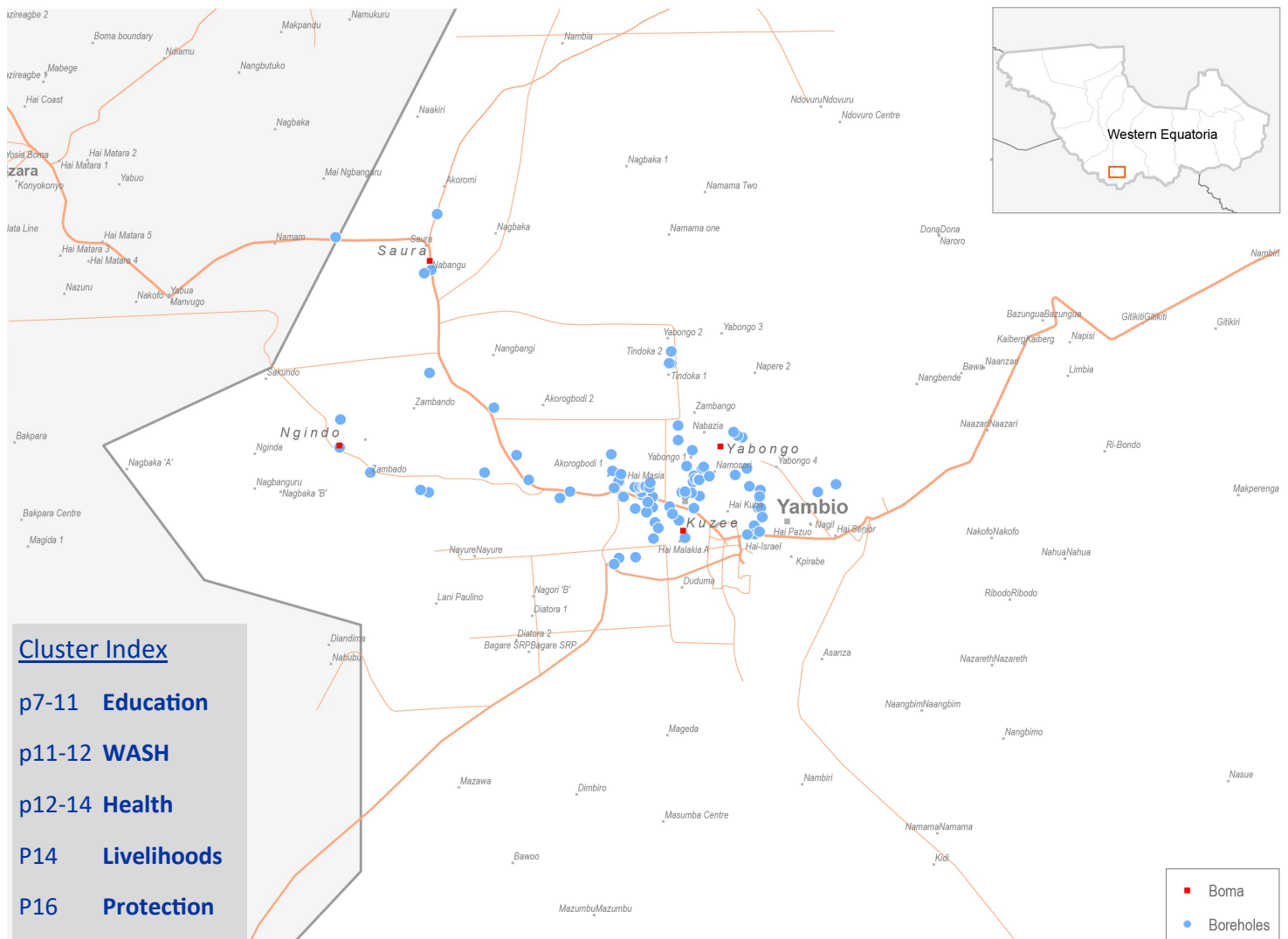
Payment of incentives to teachers, training of teachers, provision of learning supplies



Rehabilitation of non-functional boreholes / water points



Provision of drugs and equipment to health care facilities



KEY FINDINGS

- 13 out of a total of 52 villages were deserted (25%);
- 31 out of 52 villages had water points (60%). In five villages these were non-functional;
- 52 out of 166 assessed water points are non-functional (31%);
- 1 out of 13 assessed health facilities was not operating;
- In order to respond to future disease outbreaks, training was considered top priority, followed by support in increased public awareness, transport capacities and refrigeration;
- 5/52 assessed schools are not operational (10%) and those that are operating are often doing so with a very low level of capacity;
- High levels of school dropouts, especially among girls, due to early marriage and poverty; overall between 5% and 13% per boma, with an average of 8%;
- Payam authorities report that armed conflict restricts inhabitants' access to food, education and protection. Access to water and health services are furthermore restricted because of a lack of water points and health care centres;¹
- There are 95 households of IDPs who settled within Hai Cuba and expressed interest in returning to their pre-displacement residential areas, provided resettlement packages such as food and Shelter / NFI items are made available;
- While IDPs have started spontaneously returning to major residential areas, the number of new IDPs has equally increased, maintaining the overall IDP stock at approximately 29,447 individuals;
- The presence of UXOs was reported for Pazuo Centre (north ward). The areas had not been demined yet.



Gangara Emilia West village in Yabongo Boma, © IOM 2017 (Photo: Edward Lodiog)

¹ According to UNOCHA / Inter Cluster Working Group Yambio

YAMBIO OVERVIEW

Yambio town is a payam (within a county of the same name) in Western Equatoria with an estimated population of 113,051 individuals. Yambio County consists of five payams, namely, Yambio, Li-Rangu, Bangasu, Gangura and Najangale. It is primarily inhabited by the Zande, Balanda and Moru ethnic groups.

Out of the five payams, only Yambio and Gangura are accessible. Li-Rangu, Bangasu and Najangale are inaccessible due to insecurity. Sudan People's Liberation Army in Opposition (SPLA-IO) are still active in these

payams. Yambio Payam is made up of six bomas, namely, Pazuo, Saura, Yabongo, Asanza, Kuzee and Ngindo. These six bomas feature 52 villages of which 13 are deserted. The administrative centre is located in Yabongo Boma. The government / RRC and local community structure is functional. Yambio has gained a status of municipality and a position of a mayor was recently created.

Prior to violence erupting in the region in 2015, as detailed further below, Yambio and Western Equatoria at large used to be seen as the food basket of South Sudan.



DISPLACEMENT DYNAMICS

Since the conflict erupted in October 2015 between South Sudan Liberation Movement (SSLM) / former arrow boys, SPLA-IO, other armed groups and the government, there has been series of displacements in Yambio and Western Equatoria State at large.

Like many other areas in the greater Equatorias, Yambio was relatively stable following the outbreak of the December 2013 crisis. However, beginning in early 2015, growing tensions between local communities, various armed militias, and Government security services led to increasing insecurity, conflict, and multiple displacements. In July 2015, retaliatory violence connected to the national conflict led to population movements towards the UNMISS base and international military base in Nzara. In December 2015, increasing violence in Yambio town—namely Ikpiro, Hai Cuba, Hai Tarawa and Nakiri—pushed over 5,000 IDPs to temporarily seek shelter at the Adventist Development and Relief Agency (ADRA) compound next to UNMISS. Large scale military operations in January and November 2016 north of Yambio town in Saura, Li Rangu, and Nadiangere caused widespread displacement, with the majority moving south and integrating into different communities within Yambio. Violence against civilians and destruction of property in the villages of Bazungua, Gitikiri, Bodo, and Bazumburu

drove thousands into Rimenze and Kasia in early January 2017, with approximately 5,200 IDPs sheltering in Rimenze Catholic Church alone.

Although tensions still persist and located in a highly volatile region, Yambio has seen relative stability throughout 2017.

The most affected areas in Yambio Payam and town during the conflict are Ikpiro, Hai Cuba, Hai Tarawa and Nakiri. These are residential areas within Yambio municipality.

- Some of the IDPs fled from the above areas to the nearby forests, others crossed to the Central African Republic (DRC) through Nabiapai and settled in Nanagbara in DRC.
- A few crossed to CAR through Source Yubu in Tambura County and settled in Bambuti and Oboo in CAR.
- Other IDPs in Yambio town were also displaced from Li-Rangu payam which is still being controlled by SPLA-IO to date.

METHODOLOGY

The objective of this VAS report is to provide baseline data to map the basic needs and critical service gaps in areas of high return and to share the findings with government authorities and partners for better planning and targeting of transitional and recovery activities. Yambio was selected for VAS following a meeting held in Juba between USAID, IOM, UNDP and Yambio peace building partners in coordination with Western Equatoria's ICWG in early September 2017 due to the anticipated returns / reintegration of ex-SSLM members and the increasing number of returnees observed to be moving back to their residential areas.

VAS data are derived from four complementary and integrated questionnaires: Boma Questionnaire, Payam Authorities Questionnaire, Health Technical Questionnaire and Education Technical Questionnaire.

A mixed methods approach of key informant interviews, focus group discussions and direct observation was utilized to collect and triangulate data throughout the data collection process. The data collection teams conducted the assessments in the locations of interest

by physically visiting each of the bomas / residential areas, villages and health and education facilities.

In efforts to build the capacity of national and locally based actors, IOM conducted the VAS in partnership with Change Agent Organisation and in close collaboration with the RRC.

IOM conducted a comprehensive three-day training for enumerators recruited by IOM. The first two days focused on effective data collection techniques and methods, an in-depth review of the questionnaires and technical training on GPS devices. On the third day, enumerators applied the theory using the questionnaires and technical training on GPS devices by simulating a field exercise.

Following the successful completion of the training, the data collection teams were deployed to cover Yambio Town / Payam, six bomas / residential areas and 52 villages.

Boma Mapping Survey

Conducted in each boma with the administrators and representatives at the Boma level and representatives of the returnee, IDPs, women and youth groups.

Payam Authorities Survey

Conducted at each payam with the senior payam authority (i.e. Payam Administrator or Executive Director)

Education Technical Questionnaire

Conducted at each education facility with the facility staff (i.e. teachers or the headmaster)

Health Technical Questionnaire

Conducted at each health facility with the facility staff (i.e. doctor or health officer)

GENERAL OBSERVATION DURING ASSESSMENT:

- Calm is returning to Yambio Payam. This observation is based on three visits of DTM staff during 2017. More and more businesses are re-opening. Only a few villages in the outskirts of the town remain inaccessible for fear of insecurity. Some areas are deserted due to insecurity (e.g. Ikpiro, Hai Khartoum and part of Kabasi Village).
- The IDPs who previously fled to the nearby forest are slowly and spontaneously moving back to residential areas, returnees were observed clearing the bushes around their homes and repairing the damaged shelters.
- The main livelihood activities practiced in Yambio and Western Equatoria in general are farming and daily labour. Agricultural production has been affected by conflict in almost all bomas. All bomas in Yambio town and surrounding villages have access to a major market to purchase basic goods and commodities (Yambio main market). These basic goods come from Uganda through the Democratic Republic of Congo as there is no direct accessible road link between Central Equatoria in South Sudan and Uganda.
- Most infrastructure across the six bomas / residential areas of Yambio town are permeant and semi- permanent buildings. Some infrastructure was severely damaged during conflict in 2016 and 2017 while some remained in good condition.
- Many school buildings were severely damaged during the crisis while other schools do not have school buildings at all. Students were observed learning under trees.
- Most schools are operational except those in severely conflict affected villages like Ikpiro and other inaccessible areas. However, most of the teachers in these schools are volunteers and untrained. Qualified teachers commonly look for opportunities in NGOs and private sectors as there is delay in salary payments by the government.
- Health is severely affected as there are almost no drugs in all the health facilities visited.
- Boreholes are often individually owned, limiting or impeding their access to community members.



Focus Group Discussion on boma level in Saura, © IOM 2017 (Photo: Moite Rose team)

BOMA LEVEL FINDING OVERVIEW

	Asanza	Kuzee	Yabongo	Saura	Ngindo	Pazuo	Total
Population in need	14,780	14,000	21,300	27,707	12,300	23,000	113,051
Populated Villages	6	5	9	7	7	5	39
Deserted Villages	3	0	3	3	2	2	13
Functional schools	11	5	12	3	8	8	47
Non-functional Schools	1	0	4	1	1	0	7
Functional Health Facilities	4	2	2	2	2	0	12
Non-functional Health Facilities	0	0	1	0	0	0	1
Functional water points	19	21	55	2	11	6	114
Non-functional water points	11	4	24	4	5	4	52

DISPLACEMENT OVERVIEW: Aggregate Population Figures According to Boma Chiefs

According to boma chiefs, the six bomas are inhabited by a total of 113,051 individuals. The communities were spread across 39 of the 52 assessed villages. Twenty-five per cent of villages remain deserted. Most returnees arrived in June 2017 from the Democratic

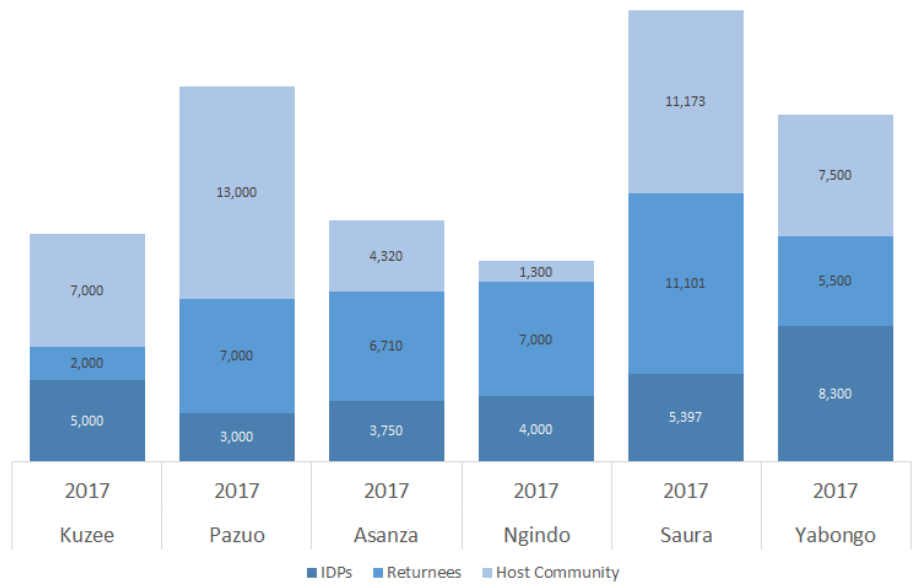
Republic of the Congo and Sakure Payam (Western Equatoria). Payam authorities are expecting further influxes before February 2018.

Please note that these figures are indicative only and rely on (often hand-written) records of boma chiefs.

	Total	IDPs	Returnees	Host Community
Kuzee	14,000	5,000	2,000	7,000
Pazuo	23,000	3,000	7,000	13,000
Asanza	14,780	3,750	6,710	4,320
Ngindo	12,300	4,000	7,000	1,300
Saura	27,671	5,397	11,101	11,173
Yabongo	21,300	8,300	5,500	7,500
Total	113,051	29,447	39,311	44,293

	# deserted villages	# populated villages
Pazuo	2	5
Saura	3	7
Yabongo	3	9
Asanza	3	6
Kuzee	0	5
Ngindo	2	7
Total	13	39

Yambio population according to boma representatives



INFRASTRUCTURE

Permanent landownership is common in all bomas while temporary landownership prevailed additionally in five out of six bomas. Individual (4/6) ancestral (1/6) and free communal (1/6) landownership were less common. Tukuls with mud walls are the most common kind of shelter used in all bomas except for Pazuo where brick walls with thatched or iron roofs were

more widely spread. Boma representatives reported that roads were present in all bomas except for Ngindo but that these were non-functional in Pazuo and Yabongo. Government-built bridges were present in all bomas except for Kuzee and Yabongo but these were only functional in Saura. Mobile reception was unavailable in Saura, Yabongo and Ngindo.



EDUCATION

Payam authorities report that primary schools are government-run and that education officials visit schools three times a year for inspections. While schools were reportedly present in all bomas, these facilities were non-functional in Yabongo. Schools were privately run in Kuzee, Pazuo and Asanza; government-run in Yabongo and Ngindo and UN / NGO run in Saura. Boma representatives in Asanza and Ngindo reported that school standards were not satisfactory because of issues including poor performance, untrained teachers and fees in Asanza and mainly because of distant locations in Ngindo's case.

The most urgent education related needs according to boma representatives were trained teachers (Kuzee,

Asanza and Ngindo) and additional classes (Pazuo, Saura and Yabongo).

Children of all bomas reportedly also visit schools in Yabongo (a secondary school according to representatives from Ngindo). Children in Kuzee and Pazuo generally walk 30 to 60 minutes to school, in Asanza 1.5 hours, two hours in Ngindo and over two hours for children living in remote villages around Saura. Boma representatives claim that approximately three quarter of children overall attend school in five bomas (only 25% in Ngindo). The remaining children face barriers such as language, fees, migration, distance to schools, and security risks causing them to not attend school.

According to boma representatives, the percentage of girls attending schools is lower than the overall average in most bomas: only half of all girls in Kuzee and Saura and a quarter of girls in Pazuo and Ngindo attend school according to boma representatives. This is said to be partly due to school fees, migration and distances but mainly because of security concerns and early marriage. The latter was cited as a barrier to girls' education in all six bomas. This information was not confirmed by the records of educational facilities, according to which 52 per cent of all dropouts were girls and 50 per cent of all school children were female (aggregated data encompassing all 49 operational facilities). Secondary school attendance was equally near balanced with a 47

per cent female student cohort. Notable exceptions are Pazuo where only 31 per cent of all 486 secondary school pupils are female and Ngindo, where 70 per cent of 191 dropouts of 2017 are female.

Children in most bomas moved boma or even county (Asanza and Yabongo) to attend further education when it wasn't available in their own.

Non-primary and secondary forms of education were available in Pazuo, Yabongo and Asanza. The latter had programmes in informal literacy and Sunday schooling. Adult classes were available in Pazuo. Furthermore, carpentry and tailoring classes were reportedly run in Yabongo (supported by the UN / NGOs).

Education Facilities*

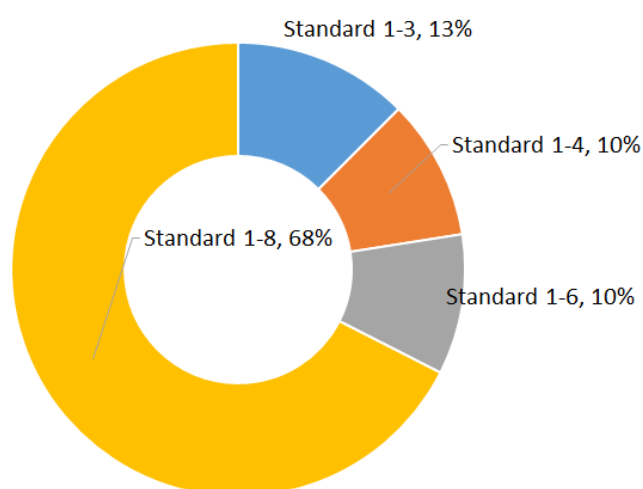
	Primary school		Secondary school	
	Operational	Non-operational	Operational	Non-operational
Pazuo	6	0	2	0
Saura	3	1	0	0
Yabongo	8	2	4	0
Asanza	11	0	0	1
Kuzee	5	0	0	0
Ngindo	7	0	1	1
Total	40	3	7	2

*54 educational facilities: 52 primary and secondary schools, one technical college and one nursery school

DTM IOM visited 54 educational facilities of which 43 were primary schools, 9 secondary schools, one (operational) technical college (Kuzee) and one (operational) nursery school (Yabongo). All schools operated in English and taught the new South Sudanese curriculum.

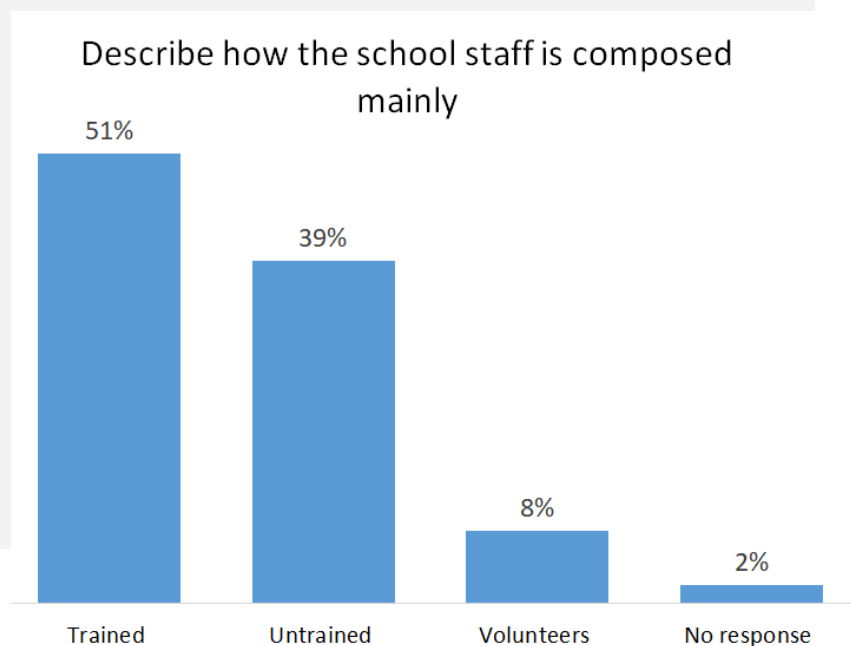
- Of five non-operational schools, three closed in 2015 and two in 2016 because of insecurity.
- Out of 40 operational primary schools, one third taught less than the standard 1-8 years. All seven operational secondary schools taught standard 1-4 years.
- Eighty-nine per cent of 27 primary schools that do not teach up to eight years report that children in the boma continue their schooling elsewhere.

40 Operational primary schools: years taught



	Total Enrolled	Female %	% Student by boma	# Teachers	% of all Yambio Teachers	# Students per teacher average	# Dropout	% Dropout
Pazuo	3,234	45%	14%	94	14%	34	415	13%
Saura	710	44%	3%	34	5%	21	78	11%
Yabongo	7,760	52%	33%	190	29%	41	634	8%
Asanza	5,198	51%	22%	140	21%	37	339	7%
Kuzee	3,195	46%	14%	95	14%	34	146	5%
Ngindo	3,307	49%	14%	113	17%	29	191	6%
TOTAL	23,404	50%	100%	666	100%	35	1,803	8%

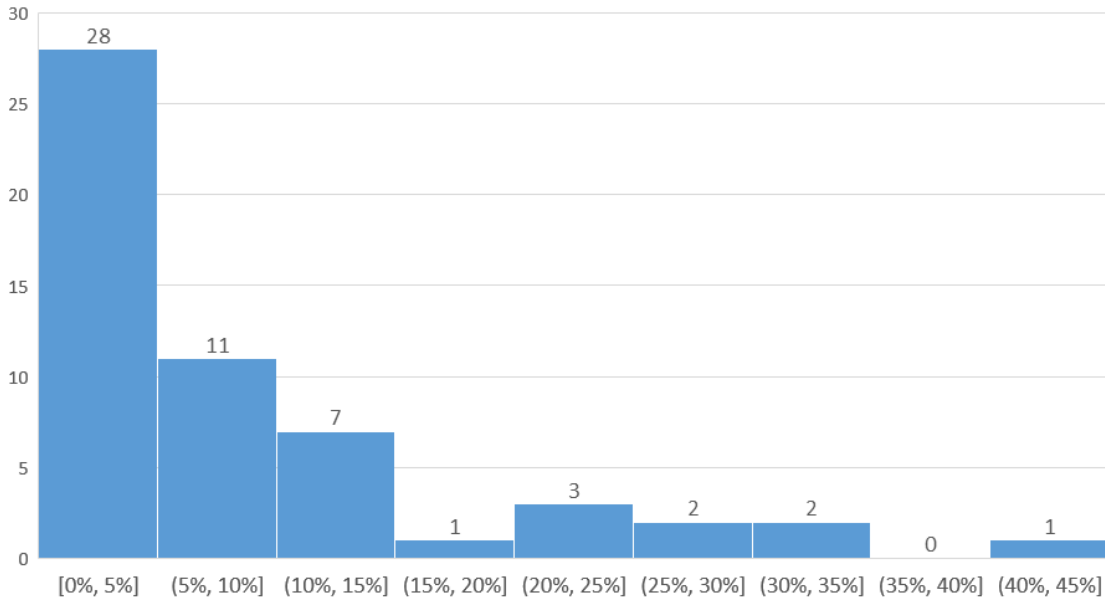
- Forty per cent of functional schools report that the facilities did not have the capacity to accommodate all children from the catchment area and nearly all schools were visited by children from other bomas.
- All 49 operational educational facilities in the six assessed bomas teach a total of 23,404 children of which 50 per cent are girls. The highest number of schools and students can be found in Yabongo (7,760 students in 12 schools) which also houses four out of seven assessed secondary schools.
- The number of teachers working in each boma is more or less proportional to the number of students in relative terms (14% of all students and 14% of all teachers are in Pazuo). Nearly half of all schools described their staff as untrained (39%) or volunteers (8%). Twenty-eight per cent of all teachers were female.
- The highest average student per teacher ratio was found in Yabongo with 41 students for one teacher. On average there were 35 students for one teacher (37 students per teacher in Wau North and South during a November 2017 assessment).²
- The highest drop-out rate was found in Pazuo where 13 per cent of all enrolled students had dropped out in the past year. The overall average was eight per cent (compared to 11 per cent in Wau during a November 2017 assessment).³ Fifty-two per cent of all dropouts were female. This percentage was disproportionately high in Ngindo, where 70 per cent of all dropouts were girls. Out of the Young Angel Nursery and Primary School in Yabongo had the highest drop-out rate with 43 per cent. Nearly half of all schools reported that conflict had been the main reason for drop-outs.



² Wau Town Assessment Survey (VAS) | November 2017, available at <http://www.iomsouthsudan.org/tracking/node/342>

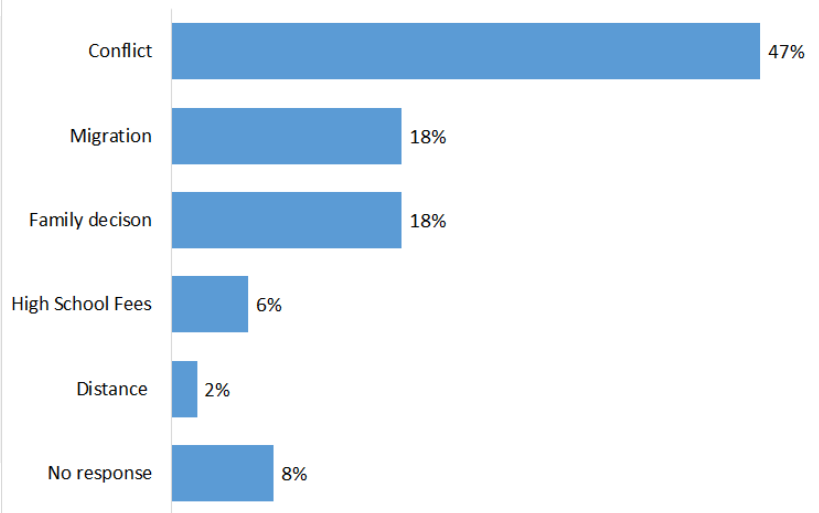
³ Idem

Drop-out rates of 49 operational education facilities

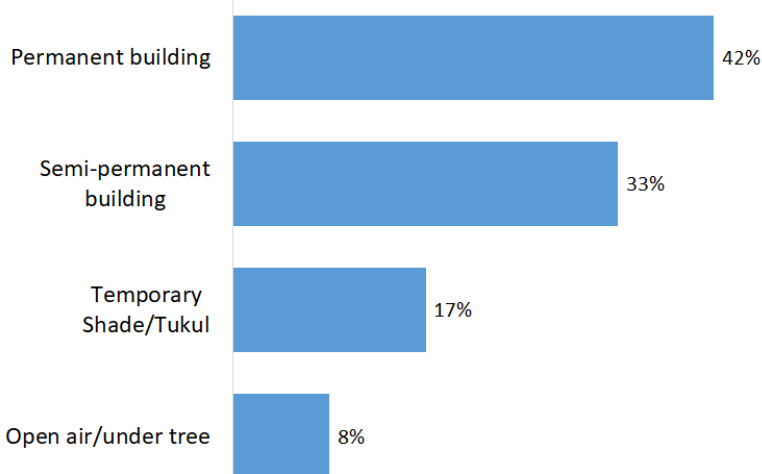


- Schools reporting a dropout rate of over 10 per cent (19 schools representing 39% of functioning establishments) are not concentrated in certain bomas and the female percentage of dropouts are not particularly high (53%). A particularity amongst these schools that stands out is “conflict” cited as a main reason for dropouts, which figures, with 68 per cent, slightly higher than the average 47 per cent.

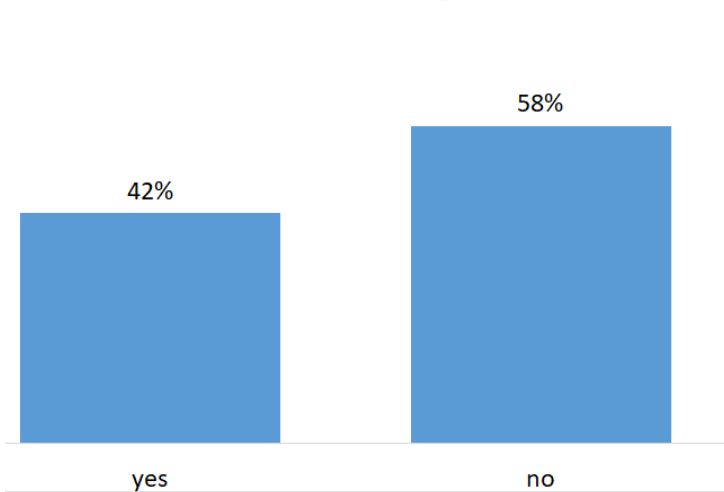
Main reasons for drop-outs



Describe the education facility structure



Does the school have an appropriate, safe and secure building?

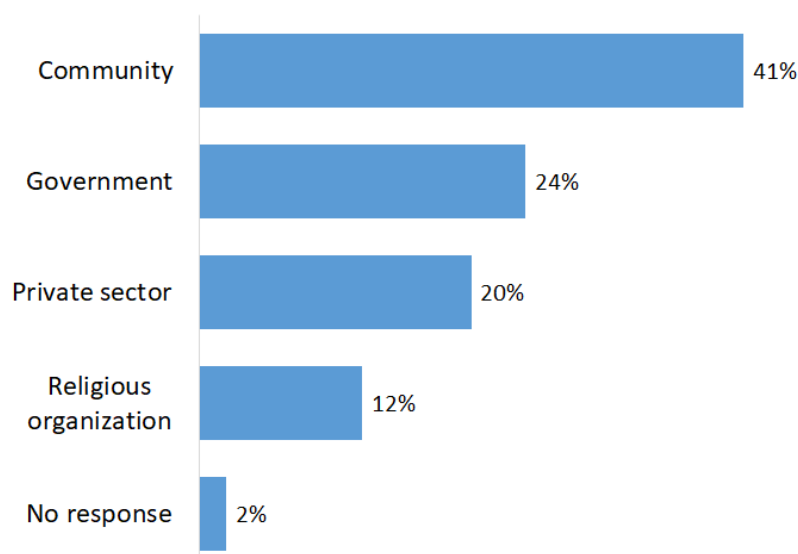


- Sixty-seven per cent of schools are attended by disabled children. At 76 per cent of schools, these are most commonly physical disabilities, at 15 per cent hearing impairments and for 18 per cent visual impairments.
- More than half of all assessed educational facilities (58%) were not housed in appropriate, safe and secure buildings (self-assessed). Over half of all schools did not have permanent buildings but were housed in semi-permanent buildings (33%), temporary shade / tukuls (17%) or even in open air / under trees (8%).
- Seventy-three per cent of all schools reported to not have sufficient furniture. Latrines were insufficiently available at 63 per cent of schools and completely absent at nine per cent (no answer for 13% and sufficient 15%).
- Drinking water was unavailable at 69 per cent of schools and non-drinking water for hygiene was absent at 80 per cent of facilities.
- Eighty-eight per cent of schools required fees to be paid, of which 91 per cent reported that families had difficulties coming up with the money. While non-payment of fees was most commonly not

penalized (31%), 18 per cent of families were asked to do other work in-kind, saw their children suspended (12%) or dismissed (6%) and received delayed school results (10%) (other reasons for 2% and no response at 20% of schools).

- Most schools were principally supported by the community (41%) while 24% per cent received support from the government.
- Ninety-four per cent of schools report that students continue their education elsewhere.
- Thirty-seven per cent of schools confirmed that

Who is the main supporter of the school?



WASH

Fifty-two out of 166 water points (31%) are non-functional. The highest proportion of non-functional water points were found to be in Saura (67%). Unsurprisingly, the ratio of inhabitants per water points was equally the highest in Saura (13,836 individuals per functional water point).

While boreholes were the most common water source for households in Kuzee, Pazuo and Asanza, wells represented the main source of water in Saura, Ngindo and Yabongo.

	Inhabitants / functional water point
Kuzee	667
Pazuo	3,833
Asanza	778
Ngindo	1,118
Saura	13,836
Yabongo	387
Total Average	992

Boreholes were said to be inaccessible in Kuzee (according to boma representatives) and insufficient in the other bomas. Access to water points was limited by distance in Saura, Asanza and Pazuo, and by insecurity in Saura and Asanza. Water user committees were established in all bomas apart from Kuzee and Pazuo. Fees were being charged in all bomas except for Saura.

Boma representatives reported that water had been the cause for conflict among communities in all bomas.

Water points were mostly managed by the community (government in Ngindo) and never the UN / NGOs.

Latrines (in households) were reportedly present in all bomas. These were not used in Ngindo because of cultural beliefs.

Apart from Ngindo and Yabongo, all bomas had received some kind of sanitation and hygiene education campaigns: on handwashing and clean drinking water in Kuzee, Pazuo and Asanza, on clean hygiene in Kuzee, Pzuo, Saura and Asanza and garbage disposal in Saura. These campaigns were mostly conducted by the UN / NGOs but the private sector in Saura.

Water points in Yambio

	Functional	Non-functional	Percentage of water points non-functional	Total
Pazuo	6	4	40%	10
Saura	2	4	67%	6
Yabongo	55	24	30%	79
Asanza	19	11	37%	30
Kuzee	21	4	16%	25
Ngindo	11	5	31%	16
Total	114	52	31%	166



HEALTH

Health care facilities were government-run in Ngindo, Asanza and Yabongo but operated by UN / NGOs in Saura. However, boma representatives were not satisfied with existing facilities due to a lack of drugs. Facilities in Yabongo were additionally not open every day and boma representatives claimed that referrals were not made at health care centres in Ngindo. The need for payments were reported to represent a barrier to potential patients in Ngindo. Boma representatives in

Yabongo also cited a lack of qualified personnel. Facilities in Yabongo were reportedly not attended. Immunisation campaigns had been conducted in all six bomas in August or October 2017 (August 2016 in Saura) by UN / NGOs.

[IOM DTM assessed 13 health facilities out of which one has been non-operational since 2015 in Yabongo due to insecurity and infrastructural damage.](#)

- Out of 12 operational health facilities, ten are Primary Health Care Units (PHCU), one a Primary Health Care Centre (Yambio Prison PHCC) and one a hospital (Yambio State Hospital). There were no operational health facilities in Pazuo.
- For half of these facilities support comes from the government and for the other half from the UN / NGOs. In Kuzee both facilities are run by the government and in Yabongo both by NGOs. In other bomas facilities are half run by the government, half by NGOs.

Boma	Number of operational Health Facilities
Pazuo	0
Asanza	4
Kuzee	2
Ngindo	2
Saura	2
Yabongo	2
Grand Total	12

- All 12 functional facilities report to the Integrated Disease Surveillance and Response (IDSR), the Ministry of Health or the Health Management Information System (HMIS).
- Four out of 12 functional health facilities are considered safe, secure and appropriate.
- One facility in Saura and another in Kuzee did not have permanent buildings but were described as temporary structures.
- Most commonly, clinical waste is incinerated or buried in the ground. However, three health facilities report that waste ends up in open garbage.

Trained Healthcare Staff

	Doctors	Med. Assistant	Nurses	Trad. Birth assistants	Lab. Assistants	Pharmacists	Maternal workers	Midwives	Vaccinators	Total
Pazuo	0	0	0	0	0	0	0	0	0	0
Saura	0	0	0	0	0	0	0	0	0	0
Yabongo	0	2	2	3	1	0	1	1	2	12
Asanza	4	9	39	3	11	1	9	8	4	88
Kuzee	0	3	3	3	3	2	1	2	2	19
Ngindo	6	0	0	1	0	0	2	0	1	10
Total	10	14	44	10	15	3	13	11	9	129

- Saura reports not having trained staff in any of its health facilities. Other bomas have trained staff in all of their health facilities. In Asanza, three health facilities do not employ doctors and one facility employs four doctors.
- The twelve operating health facilities employ a total of 129 workers. In Kuzee and Yabongo, none of the health facilities employ a doctor. In Ngindo, one health facility employs two doctors and another one employs four doctors. There are ten doctors in total in the assessed bomas. Six health facilities in two bomas do not employ trained nurses.
- Patients across the five bomas with operating health facilities encompassed the following demographic groups in near equal proportions (including on a gender basis): infants (0-5), children (6-17) as well as adults (over 18 years of age).

Yambio Patient Demographics

	Male 0-5 years	Female 0-5 years	Male 6-17 years	Female 6-17 years	Male over 18 years	Female over 18 years	Total
Pazuo	0	0	0	0	0	0	0
Saura	1953	1,654	832	1,291	1,955	3,010	10,695
Yabongo	88	72	114	159	0	0	433
Asanza	8653	9,440	9,004	8,629	8,669	8,730	53,125
Kuzee	946	1,012	642	843	762	734	4,939
Ngindo	3830	3,904	3,354	3,377	2,438	2,478	19,381
total	15470	16,082	13,946	14,299	13,824	14,952	88,573
% of total	17%	18%	16%	16%	16%	17%	100%

Offered services:

- All facilities with trained staff provide **outpatient care** and health education.
- Six facilities offer services in the **maternity ward**;
- Four facilities offer **laboratory services**;
- Three facilities offer **inpatient care**;
- Three facilities offer **psychosocial support**;
- Two facilities offer a **feeding centre**.
- Only one facility, Yambio PHCC, offers **transportation for referrals**.

Patients need to pay in three of the 12 functional facilities. All the services offered in facilities in Asanza and Kuzee are free. In the other bomas, one facility offers services for free, the other paid.

One boma (Saura) reports that there has been a disease outbreak (skin diseases, January 2016). The response was to stock up on medicine and vaccinations.

In terms of likely disease outbreaks, health workers in Saura feared future cholera outbreaks. Measles were expected in Asanza, Ngindo, Saura and Yabongo. Meningitis was expected in Yabongo. Health care workers in Ngindo and Saura, furthermore, cited yellow fever as a concern. Other concerns include

malaria, skin rashes, diarrhea and chicken pox (Asanza and Kuzee).

In order to respond to future disease outbreaks, training was considered top priority, followed by support in increased public awareness, transport capacities and refrigeration.

The majority of facilities (10 out of 12) does offer full schedule of vaccination for children. One facility in Ngindo and one in Yabongo do not. WHO and NGOs are main supporters for vaccinations.

10 out of 12 facilities conduct health education sessions. Sessions conducted in the last year include:

- **Hygiene sanitation** in eight facilities;
- **Child Nutrition** in seven facilities (none in Ngindo);
- **Family planning** in six facilities (none in Ngindo);
- **Reproductive health** in two facilities (only in Asanza and Yabongo);
- **STDs** in three facilities;
- **Other transmittable diseases** in four facilities (none in Ngindo);
- **HIV/Aids** in four facilities (none in Ngindo);
- **Malaria** in six facilities (none in Ngindo).



FOOD SECURITY AND LIVELIHOODS

- Payam authorities report that the payam has experienced major livelihood shocks in the past two years caused by conflict, livestock diseases, crop diseases and pests.
- All six bomas reported periods of food scarcity. These were prevalent throughout the year or reported to be more pronounced during the rainy season (Kuzee) or the dry season (Saura and Yabongo). Boma representatives reported that the main coping mechanism was to reduce meals. Inhabitants of Saura and Yabongo also coped with food shortages by eating forest fruit and vegetables. People in Kuzee, Pazuo and Asanza were reportedly also relying on support from extended family.
- Communities in all bomas have experienced major livelihood shocks over the past two years. These were mainly due to conflict but also crop diseases (5/6 bomas), pests (4/6 bomas), livestock diseases (3/6 bomas) and human epidemics (1/6 bomas). People responded to these shocks by selling livestock in five bomas and by migrating in three. Representatives of two bomas reported that inhabitants tended to wait for assistance to deal with livelihood shocks.
- Inhabitants of all six bomas live in proximity of major markets. Boma representatives reported that while every boma contained government-run markets, the one in Yabongo was non-functional.
- Crops were most commonly rain-fed and additional irrigation was only used in two bomas. Prevalent crops were maize, groundnuts, vegetables, rice, millet, sesame and cassava. Seeds were usually gained from previous harvests (5/6 bomas) or bought at markets (4/6 bomas). Farmers in Asanza additionally received seeds from the ministry of agriculture while the UN / FAO / NGO were also distributing seeds in Asanza, Kuzee and Ngindo. Agriculture outputs were sold in all bomas (various crops but most commonly maize). While chicken fowl, fish and livestock meat were only available in two bomas, the most commonly available food stuffs were vegetables and fruit. Farmers supported each other through communal farming (4/6 bomas) and worked in cooperatives (4/6 bomas). Credit facilities were only available in Asanza and Ngindo. Boma representatives saw the community as main provider of support in Asanza and Kuzee. The UN / FAO / NGOs were said to provide support in Ngindo.
- Farmers were in need of inputs and technology support in all bomas. The main needed inputs were tools (all) seeds (5/6 bomas), training (4/6 bomas) and land in three bomas. Fertilisers and labour were only lacking in Saura and Pazuo respectively. Among technological needs, tractors were on the top of the list (5/6 bomas) followed by irrigation equipment (4/6 bomas). Ox ploughs were needed in two bomas (Saura and Yabongo).
- Conflict had a major impact on agricultural outputs in all six bomas of Yambio. Restricted market accessibility also constrained food crop production (5/6 bomas). Boma representatives reported that crop diseases (4/6 bomas) and natural disaster (2/6 bomas) further restricted food output.
- While livestock was owned by a part of the population in all bomas, livestock markets were only available in four. This did not impede livestock sales, an activity that was recorded in all bomas. Livestock owners had access to credit facilities in Asanza. Support from cooperatives was available in Asanza and Ngindo. Slaughter houses and veterinary services were unavailable across the payam according to boma representatives. The main provider of support to livestock owners in Asanza and Ngindo was the ministry of agriculture while UN / FAO / NGOs were also active in the former. Cattle owners in Asanza, Ngindo and Yabongo faced major challenges posed by livestock diseases. Payam authorities report that veterinary services are provided by UN / NGOs.
- Income generating activities were prevalent in all bomas except for Ngindo while employment was only available in Asanza and Ngindo.
- Four out of six bomas practiced fishing and sold fish locally. However, fishermen lacked storage facilities.



PROTECTION

Authorities report the presence of four police stations (Kuzee, Saura, Asanza and Yabongo), one traditional court and one judicial court. Cases were not usually being referred to the police in Ngindo. Referred cases in other bomas include rape, murder, abduction, property theft, assault and more commonly, land grabbing. Judicial courts were reportedly only accessibly from Asanza.

Boma representatives reported that inhabitants of all six bomas had been exposed to armed conflict and concomitant food shortages during the past year. Droughts were also reported as an issue faced by people in Asanza. Inhabitants of Ngindo had been, furthermore, exposed to epidemics, according to boma representatives. Women in all six bomas are exposed to gender-based violence.

Seasonal road access and crop and livestock diseases were cited as threats and risks faced by inhabitants in Saura, Kuzee and Asanza in the last two years.

Boma representatives reported that wild animals represented further threats to Pazuo's inhabitants.

Unaccompanied children lived more commonly on their own than with relatives or community support.

Women reported feeling insecure in five bomas (no response for Ngindo). Cases of rape and sexual violence were reported in all bomas.

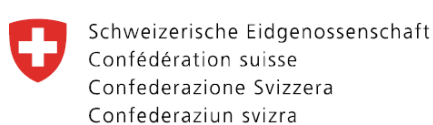
Challenges and limitations during the assessments

The DTM team faced a number of challenges and limitations during the assessments as listed below;

- Inaccessibility to some areas due to poor road conditions and insecurity;
- Lack of archived records at the health and education facilities visited, which made it difficult to verify reported statistics such as on the number of school drop outs, attendance rates or number of visitations;
- Chiefs and payam administrators do not know the exact population of their areas;
- Chiefs and community members complained of being interviewed by many agencies without concomitant assistance. Assessment fatigue was wide-spread.



All our products are available on <http://iomsouthsudan.org/tracking>
For more information, please contact southsudanDTM@iom.int



The names and boundaries on the maps in this document do not imply official endorsement or acceptance by the Government of South Sudan or IOM. This document is for planning purposes only. IOM cannot guarantee that this document is error free and therefore will accept no liability for consequential and indirect damages arising from the use of this product.