

EMERGENCY EVENT TRACKING

Data collection: 25 January 2023

Fire



As a subcomponent of the Mobility Tracking methodology (Round Five), the Emergency Event Tracking (EET) tool is deployed to track sudden displacement, provide more frequent updates on the scale of displacement, and quantify the affected population when needed.

## Event Overview



**581**  
IDP individuals



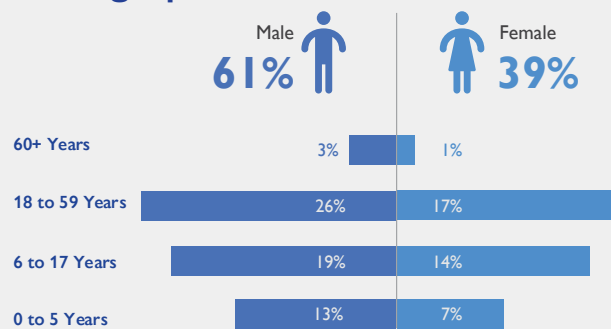
**72**  
IDP households

DTM teams activated EET to monitor the displacement of individuals affected by the breakout of a fire in Jay Jay village in Gereida locality, South Darfur on 19 January 2023. The first update estimates that there are 581 IDPs (72 households) currently seeking shelter with neighbours and relatives in Jay Jay village (100%) in Gereida, South Darfur. The IDP caseload was originally displaced from other sites across Jay Jay village (100%).

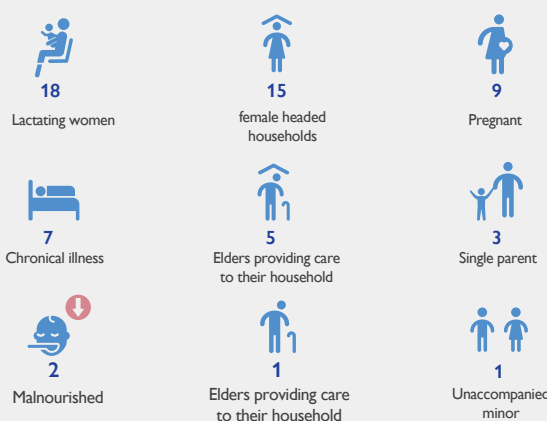
DTM field teams estimate, in triangulation with other sources, that no individuals were killed or injured during the incident. Field teams also report that all affected households lost personal belongings, and nearby agricultural land was reportedly impacted by the fire. All displaced individuals are Sudanese nationals. At least 61 cases of additional vulnerabilities in need of assistance and support were identified by key informants through DTM's Protection Indicator. Additionally, DTM Sudan estimates that there are approximately 87 persons with disabilities among the IDP caseload.\* Based on a ranking scale, the three priority needs are Food, Emergency Shelter, and Non-Food Items.



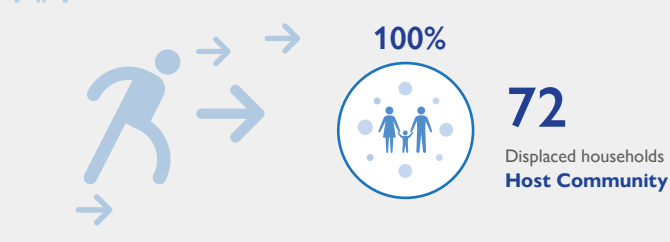
## Demographics



## Vulnerabilities



## Shelter Indicator



## Priority Needs (Ranking scale)



## Return Intention

Data from the Return Intention Indicator estimates that the entire IDP caseload (100%) intends to return to their locations of origin.

### IOM DISCLAIMER

The opinions expressed in the report are those of the authors and do not necessarily reflect the views of the International Organization for Migration (IOM). The designations employed and the presentation of material throughout the report do not imply the expression of any opinion whatsoever on the part of IOM concerning the legal status of any country, territory, city or area, or of its authorities, or concerning its frontiers or boundaries.

IOM is committed to the principle that humane and orderly migration benefits migrants and society. As an intergovernmental organization, IOM acts with its partners in the international community to: assist in the meeting of operational challenges of migration; advance understanding of migration issues; encourage social and economic development through migration; and uphold the human dignity and well-being of migrants.

\*DTM Sudan adopts the WHO global estimate that approximately 15% of the total population are persons with disabilities (PwD).