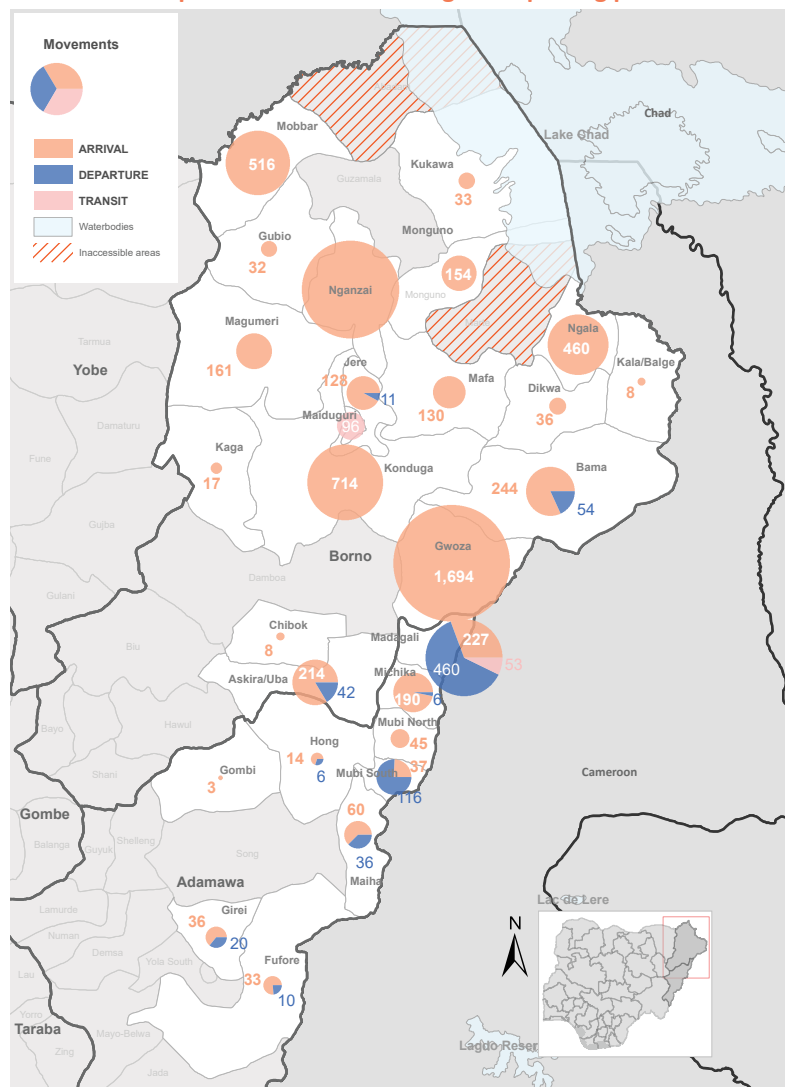


Arrivals and departures recorded during the reporting period



The depiction and use of boundaries, geographic names, and related data shown on maps and included in this report are not warranted to be error free nor do they imply judgment on the legal status of any territory, or any endorsement or acceptance of such boundaries by IOM.

Cumulative number of IDPs

LGA	DTM Round										Cumulative # IDPs
	XIX	ETT No.38	ETT No.39	ETT No.40	ETT No.41	ETT No.42	ETT No.43	ETT No.44	ETT No.45	ETT No.46	
Askira/Uba	11,406	55	142	411	99	77	113	-4	180	172	12,651
Bama	57,691	-12	20	41	37	100	195	211	190	190	58,663
Chibok	16,713	-8	-18	-	-36	-4	-18	-	11	8	16,648
Damboa	77,251	8	15	23	-6	11	32	-8	16	-	77,342
Dikwa	67,071	151	26	-	24	39	27	13	85	36	67,472
Gubio	4,975	7	5	14	4	12	-	7	16	32	5,072
Gwoza	75,639	235	465	304	593	500	328	859	920	1,694	81,537
Jere	253,532	-9	-	-	4	-66	-	-29	198	117	253,747
Kaga	19,510	18	34	4	34	17	-	28	7	17	19,669
Kala/Balge	49,913	-	-	132	58	48	270	29	5	8	50,463
Konduga	109,885	2	-	5	26	7	20	319	101	714	111,079
Kukawa	9,122	47	28	81	27	56	80	-	179	33	9,653
Maiduguri M.C.	275,720	39	18	-	9	5	-4	2	36	96	275,921
Mafa	9,366	29	19	22	175	212	42	123	138	130	10,256
Monguno	122,843	45	147	27	28	37	33	45	338	154	123,697
Hong	3,710	-	-	10	-	-	-	-	41	8	3,769
Ngala	43,744	98	115	46	140	72	14	176	504	460	45,369
Nganzai	21,176	-	-	-	-	-	122	550	1495	1,187	24,530
Madagali	18,355	114	209	144	-100	105	-	34	223	-180	18,904
Michika	26,152	48	37	84	34	32	-	26	86	184	26,683
Mubi-North	10,889	-	10	3	3	11	-	-	67	45	11,028
Mubi-South	5,883	-1	-28	0	11	12	-	-14	-133	-79	5,651
Magumeri	18,347	-	-	-	900	-	-	230	90	161	19,728
Mobbar	8,154	-	-	-	-	-	-	103	209	516	8,982
Fufore	5,332	-	-	-	-	-	-	-	-18	23	5,337
Girei	15,375	-	-	-	-	-	-	-	70	16	15,461
Gombi	2,251	-	-	-	-	-	-	-	-19	3	2,235
Maiha	14,887	-	-	-	-	-	-	-	14	24	14,925
Yola North	10,366	-	-	-	-	-	-	32	0	-	10,398
Yola South	15,919	-	-	-	-	-	-	611	0	-	16,530

from Girei LGA and 6 INDS from Yola South LGA.

Konduga (Triggers: voluntary relocation, attack): 714 INDS arrived at Konduga during the reporting period. These include 501 INDS who arrived from Magumeri LGA due to recent attacks and insecurity in the area, 193 INDS who arrived at Mashamari community from Jakana village and 20 INDS who arrived from Bama LGA.

Mobbar (Trigger: voluntary relocation): 516 arrivals were recorded in Mobbar during the reporting period. These include 294 arrivals from Gomaram in Ngala LGA, 222 arrivals from Niger Republic.

Ngala (Triggers: attack, poor living conditions, improved security): 460 INDS arrived at International School Camp in Ngala during the reporting period. These include 232 INDS who arrived from Marte LGA due to recent attacks in the area, 85 arrivals from Cameroon, 99 arrivals from surrounding villages in Ngala and 44 arrivals from Jere LGA.

Bama (Trigger: voluntary relocation): 244 arrivals and 54 departures were recorded in Bama during the reporting period. The arrivals include 112 INDS who arrived at Banki Camp from Cameroon (97 INDS) and surrounding villages in Bama (15 INDS), and 132 arrivals at GSSSS Camp from surrounding villages (122 INDS) and Jere LGA (10 INDS). The departures include 54 INDS who left Banki Camp for Jere LGA.

Askira/Uba (Triggers: voluntary relocation, poor living conditions): 214 arrivals and 42 departures were recorded in Askira/Uba during the reporting period. These include 114 arrivals at the town from surrounding villages, 53 arrivals from Numan LGA in Adamawa, 28 arrivals from Biu LGA, 11 arrivals from Maiduguri LGA, 5 arrivals from Yola North, 3 arrivals from Kaduna State, and 42 INDS who left for Gwoza LGA (17 INDS), Hong LGA (19 INDS) and Lassa ward of Askira/Uba LGA (6 INDS).

Michika (Trigger: attack): 190 arrivals and 6 departures were recorded in Michika during the reporting period. These include 47 arrivals from Cameroon, 39 arrivals from Kaduna State, 21 arrivals from Gombe State, 13 arrivals from Abuja, 51 arrivals from Gombi LGA, 8 arrivals from Mubi

Summary

Gwoza (Triggers: poor living conditions, improved security, military operations): 1,694 new arrivals were recorded in Gwoza during the reporting period. These include 927 individuals (INDs) who arrived at Pulka Transit Camp of which 827 were from Ngoshe area of Gwoza LGA and 100 from Bama LGA, 10 arrivals at GSS Camp, 150 arrivals at Bulabulin ward from Maiduguri and 607 arrivals at Gadamayo community from Adamawa State.

Nganzai (Triggers: voluntary relocation, attack): 1,187 INDS arrived at Nganzai during the reporting period. These include 733 INDS who arrived at Gajiram/Jigalti ward from Wulo/Sire ward of Monguno LGA, 293 INDS who arrived at Gajiram from surrounding villages and 161 INDS who arrived from Ngamatigana community in Monguno due to recent attacks in the area.

Madagali (Triggers: attack, voluntary relocation, improved security): 227 arrivals, 460 departures and 53 Transit movements through Madagali were recorded during the reporting period. The arrivals include 171 INDS at Bilbel ward from surrounding villages due to recent attacks in the area, 22 INDS at Gulak ward, 23 INDS at SS-Vapura ward and 11 INDS at Pallam community from Plateau State. Departures include 446 INDS and 14 INDS who left for Gwoza and Girei LGAs respectively. The people who were in transit include 22 INDS who came from Gwoza LGA, 15 INDS from Mubi North LGA, 10 INDS

Magumeri (Triggers: attack, poor living conditions): 161 arrivals were recorded in Magumeri during the reporting period. These include 92 arrivals at Gajigana from surrounding villages, 58 arrivals at Modukimeri Community from surrounding villages, and 11 arrivals at Magumeri Town.

Monguno (Trigger: voluntary relocation): 154 arrivals were recorded in Monguno during the reporting period. These include 92 arrivals at Water Board Camp, 24 arrivals at GSSSS Camp, 29 arrivals at Monguno town and 9 arrivals at Kuya Town.

Mubi South (Triggers: voluntary relocation, poor living conditions): 37 arrivals and 116 departures were recorded in Mubi South during the reporting period. These include 17 arrivals from Plateau State, 10 arrivals from Gombe State, 8 arrivals from Madagali LGA, 2 arrivals from Cameroon, 108 departures for Gwoza LGA and 8 departures for Michika LGA.

Jere (Triggers: attack, voluntary relocation): 128 INDS arrived at El-Yakub Camp from Magumeri LGA and 11 INDS left Jere for Dikwa LGA.

Mafa (Trigger: poor living conditions): 130 arrivals were recorded at Mafa during the reporting period. These include 117 arrivals at Mafa Camp B, 3 arrivals at Mafa Camp A and 10 arrivals at Ajari Camp.

Maiduguri M.C. (Trigger: voluntary relocation): 96 INDS were recorded transiting through Maiduguri from Gwoza during the reporting period.

Maiha (Triggers: voluntary relocation, poor living conditions): 60 arrivals and 36 departures were recorded in Maiha during the reporting period. These include 23 arrivals from Lagos State, 14 arrivals respectively from Guyak and Madagali LGAs, 9 arrivals from Yobe, 17 departures for Numan LGA, 10 departures for Girei LGA and 9 departures for Gwoza LGA.

Girei (Trigger: voluntary relocation): 36 arrivals and 20 departures were recorded in Girei during the reporting period. These include 12 arrivals from Numan LGA, 14 arrivals from Madagali LGA, 10 arrivals from Maiha LGA, 10 departures from EYN Camp for Numan and 10 departures for Madagali.

Mubi North (Trigger: poor living conditions): 45 arrivals were recorded in Mubi North during the reporting period. These include 17 arrivals from Damboa LGA and 14 arrivals respectively from Gwoza and Madagali LGAs.

Fufore (Triggers: voluntary relocation, attack): 33 arrivals and 10 departures were recorded in Fufore during the reporting period. These include 27 arrivals from Kukawa LGA, 6 arrivals from Numan LGA and 10 departures for Taraba State.

Dikwa (Trigger: voluntary relocation): 36 arrivals were recorded in Dikwa during the reporting period. These include 18 arrivals from Jere LGA and 18 arrivals from Boboshe ward of Dikwa.

Kukawa (Triggers: improved security, poor living conditions): 33 arrivals were recorded in Kukawa during the reporting period. These include 23 arrivals from Yobe State and 10 arrivals from Jere LGA.

Gubio (Triggers: attack, poor living conditions): 32 INDS arrived at Gubio from surrounding villages due to recent attacks in the area.

Hong (Triggers: voluntary relocation, poor living conditions): 14 arrivals and 6 departures were recorded in Hong LGA during the reporting period. These include 5 arrivals from Delta State, 5 arrivals from Gwoza LGA, 4 arrivals from Yola North and 6 departures for Gombi LGA.

Kaga (Triggers: attack, voluntary relocation): 17 INDS arrived at kaga during the reporting period. These include 10 arrivals at NRC Camp and 7 arrivals at Kaga town from Magumeri LGA.

Kala/Balge (Trigger: voluntary relocation): 8 INDS arrived at Rann in Kala/Balge from Dikwa (5 INDS) and Jarawa ward of Kala/Balge (3 INDS).

Chibok (Trigger: voluntary relocation): 8 INDS arrived at Kautikari community in Chibok from Maiduguri.

Gombi (Trigger: attack): 3 INDS arrived at Fattau ward of Gombi LGA from Numan LGA.

For more information or to report an alert, please contact:
Henry Kwenin, DTM Project Coordinator: hkwenin@iom.int | +234 9038852524
Fouad Diab, Emergency Coordinator: fdiab@iom.int | +234 9075070001
For more DTM information products: <http://nigeria.iom.int/dtm>

IOM's Emergency Tracking Tool (ETT) is deployed in Nigeria's northeastern states. Only Local Government Areas (LGAs) in which the IDP population changed since the latest DTM round of assessments are represented in this report. The data has been collected by DTM staff deployed at the locations listed and cross-checked with the partners present on the ground.

