

EMERGENCY EVENT TRACKING

Data collection : 5 January 2023



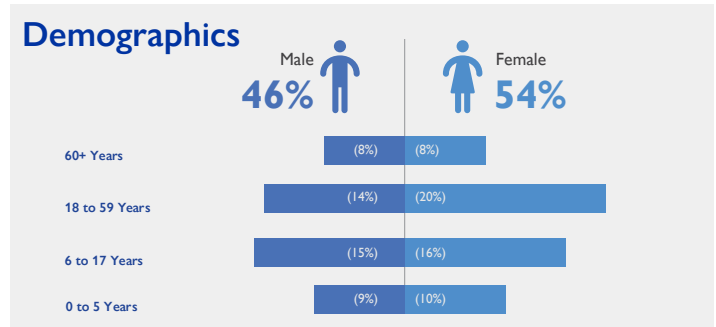
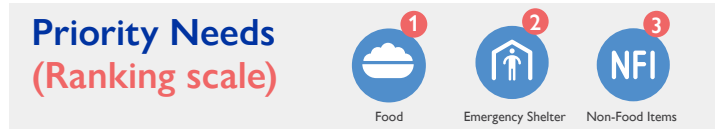
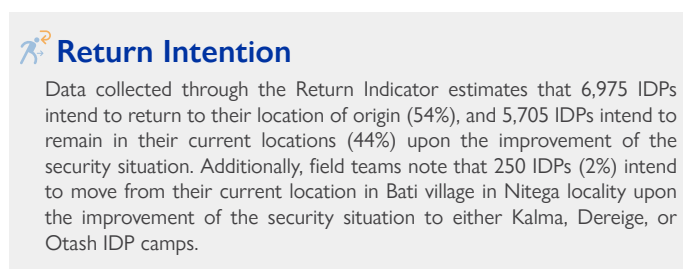
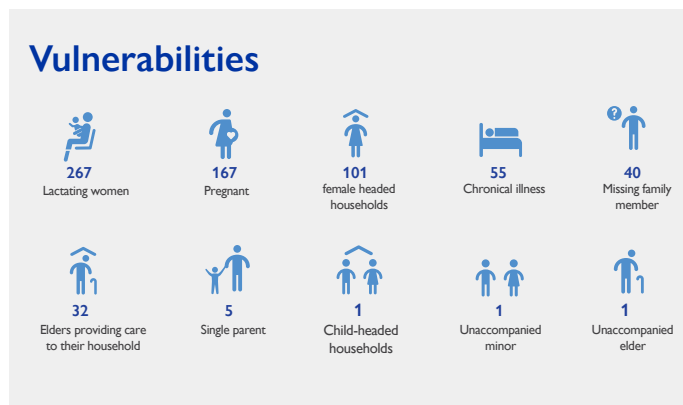
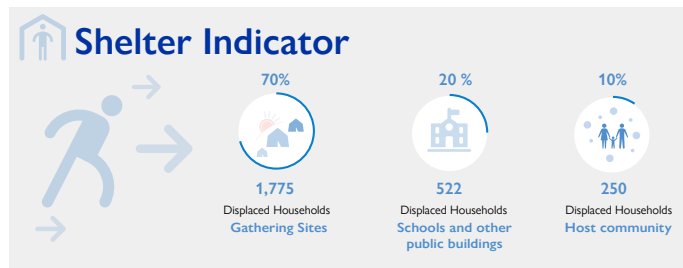
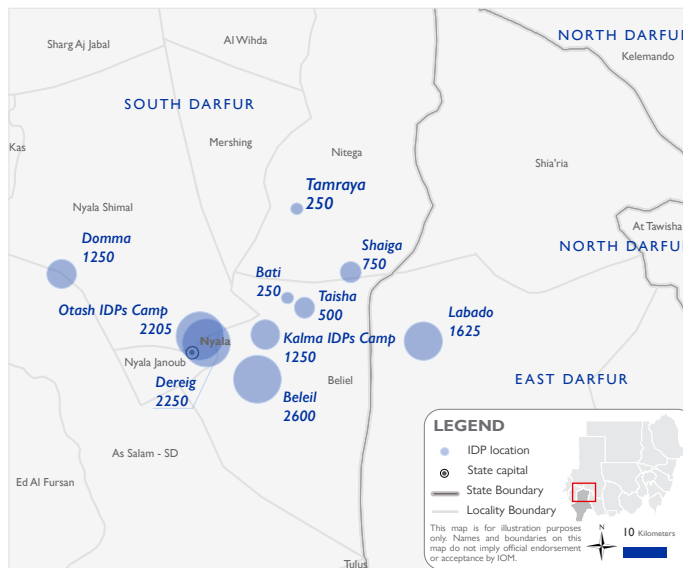
As a subcomponent of the Mobility Tracking methodology (Round Five), the Emergency Event Tracking (EET) tool is deployed to track sudden displacement, provide more frequent updates on the scale of displacement, and quantify the affected population when needed.

Event Overview



DTM teams activated EET to monitor the displacement of individuals affected by inter-communal violence across Beliel locality in South Darfur state. On 22 December 2022, inter-communal clashes erupted between members of the Arab-Abala (Rezeigat) and Dajo tribes in Amuray village following an attempted armed robbery. The incident took place as youth from the Dajo tribe were traveling between Amuray village and Odam village in Beliel locality. On 23 December 2022, field teams reported that clashes escalated to the locations of El Doka, Eshma, Kitrat Shatah, Faj Alhala, Nairah, Gushtair, Abu Odam, Merair, Um Darabah, Hejair Sambo, Om Tirrainia, Arbia Jemaza, Um Teraina, Amar Jadeid, Fasha, Um Syalah, Kokoja, Fasha, and Bashoum. For more information, [please see Update 001](#).

The second EET update estimates a total number of 12,930 IDPs seeking refuge in Nyala Shamal (34%), Beliel (30%), Nitega (14%), and Mershing (10%) localities in South Darfur, and Yassin locality (12%) in East Darfur. Almost two-thirds of the displaced are primarily located in IDP camps such as Beliel (20%), Dereige (17%), Otash (17%), and Kalma (10%). The IDP caseload was originally displaced from 25 villages across Beliel locality (100%), South Darfur. The IDP caseload has risen since the previous update largely due to the inclusion of IDPs identified by field teams in Labado in Yassin locality, East Darfur. Field teams also indicate that many additional households were originally displaced from locations across Beliel locality during the initial clashes into the open surrounding areas. These locations include the villages of Amuray, Arbia Jemaiza, Kamaskai, Hejeir Sambo, Um Syalah, Kitrat Shatah, and Gabasha. Many of those displaced from these locations have reportedly returned to their locations of origin with the support of compensation organised by the local government in South Darfur in co-ordination with Rapid Support Forces. Recent registration exercises organised with the support of the Humanitarian Aid Commission estimate that approximately 3,228 families have returned. This figure is a preliminary estimate subject to verification in the upcoming inter-agency assessment. Field teams estimate, upon re-verification and in triangulation with alternative sources, that 15 individuals have been killed, 35 individuals sustained injuries, and 2,547 cases of lost goods, cattle, and/or livestock have been reported. All displaced individuals are Sudanese nationals. At least 670 cases of additional vulnerabilities in need of assistance and support were identified by key informants through DTM's Protection Indicator. Additionally, DTM Sudan estimates that there are approximately 1,859 persons with disabilities among the IDP caseload.* Based on a ranking scale, the three priority needs across the caseload are Food, Emergency Shelter, and Non-Food Items.



*DTM Sudan adopts the WHO global estimate that approximately 15% of the total population are persons with disabilities (PwD).

IOM DISCLAIMER

The opinions expressed in the report are those of the authors and do not necessarily reflect the views of the International Organization for Migration (IOM). The designations employed and the presentation of material throughout the report do not imply the expression of any opinion whatsoever on the part of IOM concerning the legal status of any country, territory, city or area, or of its authorities, or concerning its frontiers or boundaries.

IOM is committed to the principle that humane and orderly migration benefits migrants and society. As an intergovernmental organization, IOM acts with its partners in the international community to: assist in the meeting of operational challenges of migration; advance understanding of migration issues; encourage social and economic development through migration; and uphold the human dignity and well-being of migrants.



USAID
FROM THE AMERICAN PEOPLE