

EMERGENCY EVENT TRACKING

Data collection: 26 to 29 December 2022



As a subcomponent of the Mobility Tracking methodology (Round Five), the Emergency Event Tracking (EET) tool is deployed to track sudden displacement, provide more frequent updates on the scale of displacement, and quantify the affected population when needed.

Event Overview

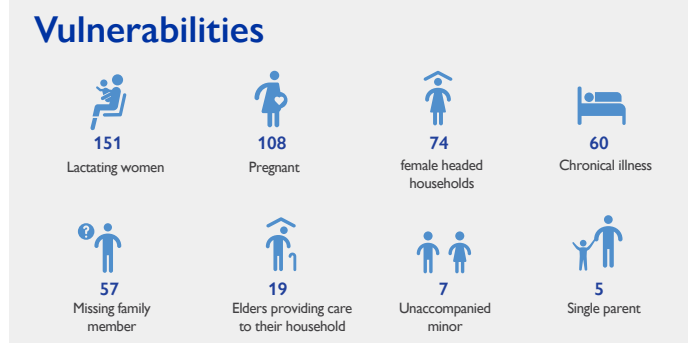
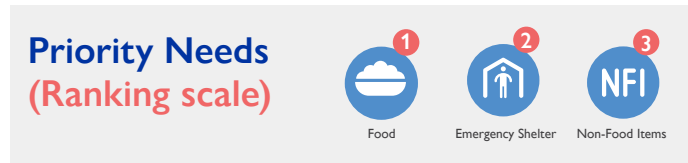
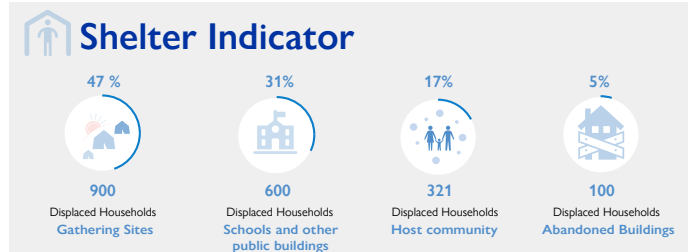
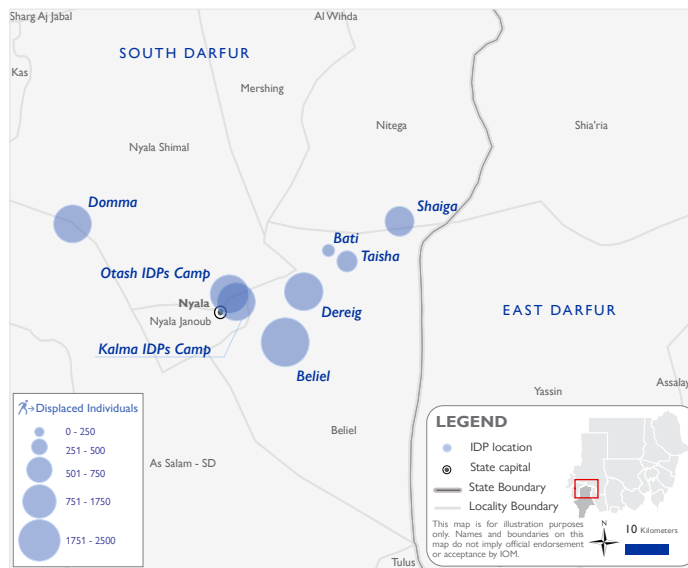


DTM teams activated EET to monitor the displacement of individuals affected by inter-communal violence across Beliel locality in South Darfur state. On 22 December 2022, inter-communal clashes erupted between members of the Arab-Abala (Rezeigat) and Dajo tribes in Amuray village following an attempted armed robbery. The incident took place as youth from the Dajo tribe were travelling between Amuray village and Odam village in Beliel locality. On 23 December 2022, field teams reported that clashes escalated to El Doka, Eshma, Kitrat Shatah, Faj Alhala, Nairah, Gushtair, Abu Odam, Merair, Um Darabah, Hejair Sambo, Om Tirraina, Arbia Jemaza, Um Teraina, Amar Jadeid, Fasha, Um Syalah, Kokoja, Fasha, and Bashoum.

The first EET update estimates that a total of 9,800 individuals (1,921 households) are currently seeking shelter in Beliel (25%) and Kalma (13%) IDP camps in Beliel locality, Dereig (18%) and Otash (13%) IDP camps in Nyala Shimal locality, Shaiga (7%), Taisha (5%), Bati (3%), and Tamraya (3%) in Nitega locality, and Domma (13%) in Mershing locality, in South Darfur state. The IDP caseload was original displaced from a total of 22 villages across Beliel locality (92%), and three villages across Nitega locality (8%).

Between 26 and 29 December 2022, DTM Sudan focal points participated in an inter-agency assessment alongside humanitarian and government counterparts. During the inter-agency assessment, UNDSS and local authorities advised against access to many locations of concern across Nitega and Beliel localities due to the ongoing security context. As such, field teams indicate that the IDP caseload is expected to rise as these locations become accessible to enumerators. Field teams have received unconfirmed reports that between 2000 and 4000 additional households have been displaced to locations not accessible to field teams, or remain en route to IDP camps. These reports are pending verification and any additional information received will be updated across future updates.

DTM field teams estimate, in triangulation with other sources, that 14 individuals have been killed, with a further 35 injuries sustained since data collection exercises began. There are also a total of 1,929 reported cases of lost goods, livestock, and/or cattle. All displaced individuals are Sudanese nationals. At least 481 cases of additional vulnerabilities in need of assistance and support were identified by key informants through DTM's Protection Indicator. Additionally, DTM Sudan estimates that there are approximately 1,470 persons with disabilities among the IDP caseload.* Based on a ranking scale, the three priority needs are Food, Emergency Shelter, and Non-Food Items.



Return Intention

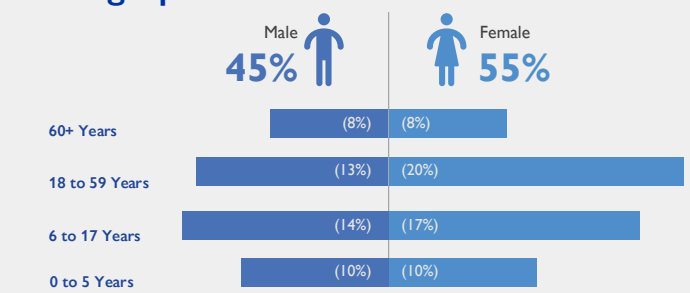
Data for the Return Intention Indicator estimates that approximately 4,300 IDPs (44%) intend to remain in their current locations, 500 IDPs (5%) intend to return to their location of origin. Findings also indicate that 1,250 IDPs (13%) of the IDP caseload intend to continue moving to either Kalma or Beliel IDP camps. Finally, key informants in two locations (covering 38% of the captured IDP caseload) were unable to account for the return intentions of their respective caseloads.

IOM DISCLAIMER

The opinions expressed in the report are those of the authors and do not necessarily reflect the views of the International Organization for Migration (IOM). The designations employed and the presentation of material throughout the report do not imply the expression of any opinion whatsoever on the part of IOM concerning the legal status of any country, territory, city or area, or of its authorities, or concerning its frontiers or boundaries.

IOM is committed to the principle that humane and orderly migration benefits migrants and society. As an intergovernmental organization, IOM acts with its partners in the international community to: assist in the meeting of operational challenges of migration; advance understanding of migration issues; encourage social and economic development through migration; and uphold the human dignity and well-being of migrants.

Demographics



*DTM Sudan adopts the WHO global estimate that approximately 15% of the total population are persons with disabilities (PwD).