

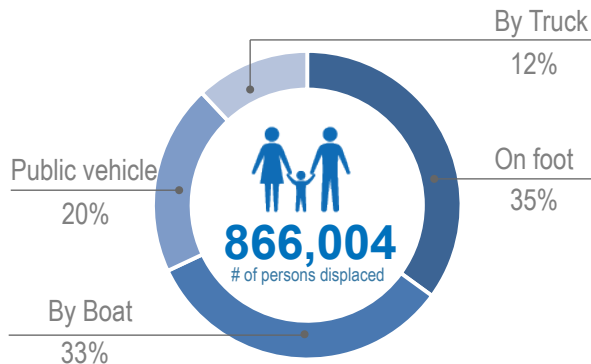


## OVERVIEW

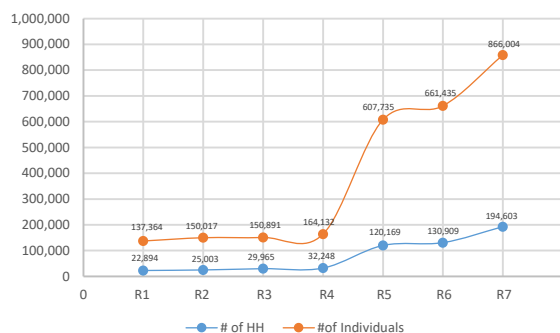
In late August 2017, a mass influx of Rohingya refugees occurred from the Rakhine State of Myanmar into Cox's Bazar in Bangladesh. Refugees are living in Ukhiya and Teknaf upazilas in Cox's Bazar, a district bordering Myanmar where the main border crossing points are located.

From 11 November to 5 December, 1,635 locations in collective sites and host communities were assessed by NPM enumerators. These 1,635 locations are located within two formal refugee camps, three makeshift settlements established before the August 2017 influx, thirty-three new spontaneous settlements both around and separate from the refugee camps and makeshift settlements, and 65 locations where Rohingya were identified living in host communities.

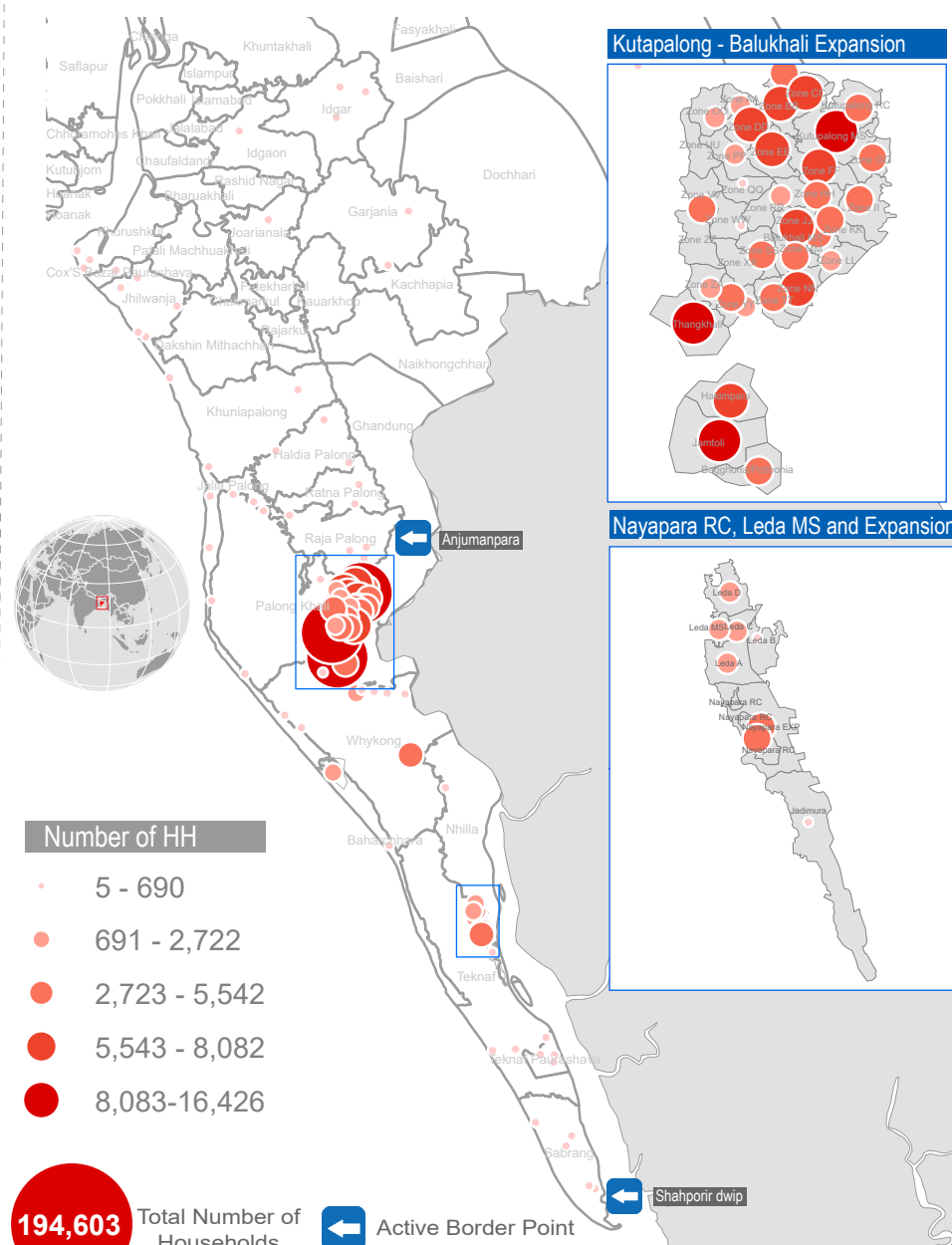
## MODE OF CROSS-BORDER ENTRY



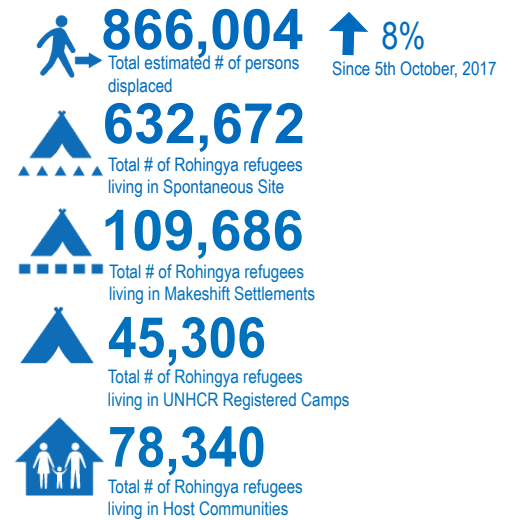
## DISPLACEMENT TREND SINCE NPM ACTIVATION



## DISPLACEMENT STATUS



## KEY FIGURES



## SECTORAL INFORMATION

