

EMERGENCY EVENT TRACKING

Data collection: 28 November 2022



As a subcomponent of the Mobility Tracking methodology (Round Four), the Emergency Event Tracking (EET) tool is deployed to track sudden displacement, provide more frequent updates on the scale of displacement, and quantify the affected population when needed.

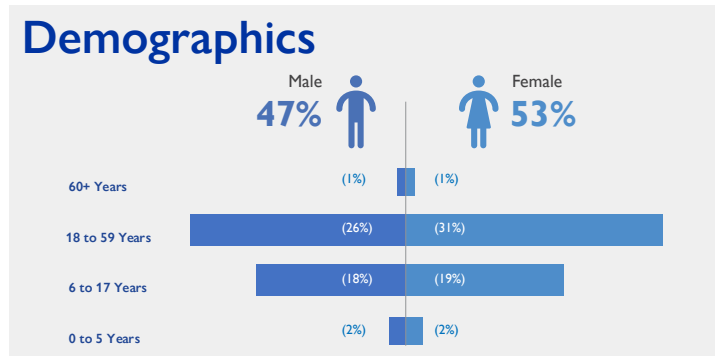
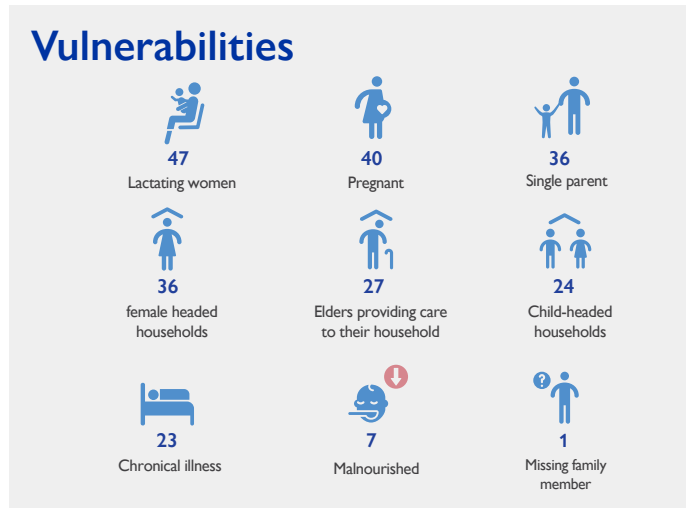
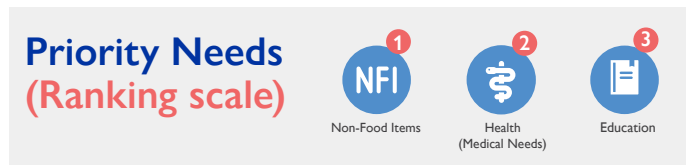
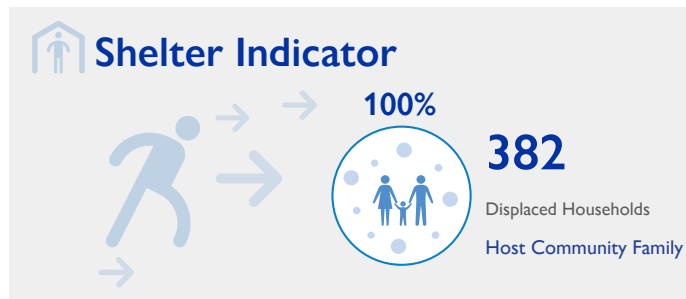
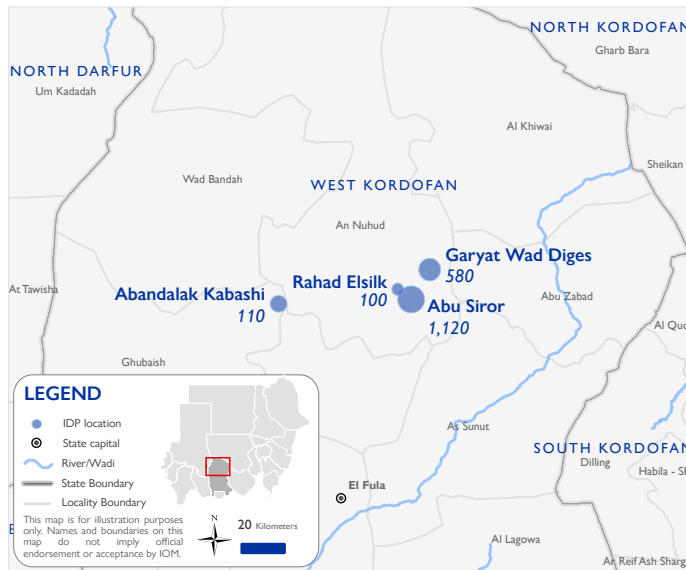
## Event Overview



DTM teams activated EET to monitor the displacement of individuals affected by inter-communal conflict between Hamar and Bani Fadol tribes. Clashes initially erupted on 20 November 2022 in Hillat Ibrahim village in An Nuhud locality, West Kordofan following a dispute over the ownership of a local water hafir.

The first update estimates that a total number of 1,910 individuals (382 households) are displaced in Abu Siror (59%), Garyat Wad Diges (30%), and Rahad Elsilk (5%) in An Nuhud locality, and in Abandalak Kabashi (6%) in Ghubaish locality in West Kordofan. The IDP Caseload was originally displaced from Hellat Ibrahim (52%), Um Shalha (24%), Alkaranik (13%), Um Ragti Albidereya (6%), and Abu Siror (5%) in An Nuhud locality, West Kordofan.

DTM field teams have confirmed that 16 individuals were killed, and 25 individuals sustained injuries. There are at least 328 reported cases of lost goods, livestock, and/or cattle. All displaced individuals are Sudanese nationals. At least 241 cases of additional vulnerabilities in need of assistance and support were identified by key informants through DTM's Protection indicator. Additionally, DTM Sudan estimates that there are approximately 287 persons with disabilities among the IDP caseload.\* Based on a ranking scale, the three priority needs across the caseload are Non-Food Items, Health (Medical Needs), and Education.



### Return Intention

Data collected through the Return Intention Indicator estimates that the entire IDP caseload (100%) intends to return to their locations of origin.



\*DTM Sudan adopts the WHO global estimate that approximately 15% of the total population are persons with disabilities (PwD).

### IOM DISCLAIMER

The opinions expressed in the report are those of the authors and do not necessarily reflect the views of the International Organization for Migration (IOM). The designations employed and the presentation of material throughout the report do not imply the expression of any opinion whatsoever on the part of IOM concerning the legal status of any country, territory, city or area, or of its authorities, or concerning its frontiers or boundaries.

IOM is committed to the principle that humane and orderly migration benefits migrants and society. As an intergovernmental organization, IOM acts with its partners in the international community to: assist in the meeting of operational challenges of migration; advance understanding of migration issues; encourage social and economic development through migration; and uphold the human dignity and well-being of migrants.