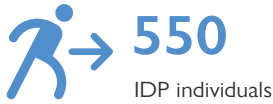


As a subcomponent of the Mobility Tracking methodology ([Round Four](#)), the Emergency Event Tracking (EET) tool is deployed to track sudden displacement, provide more frequent updates on the scale of displacement, and quantify the affected population when needed.

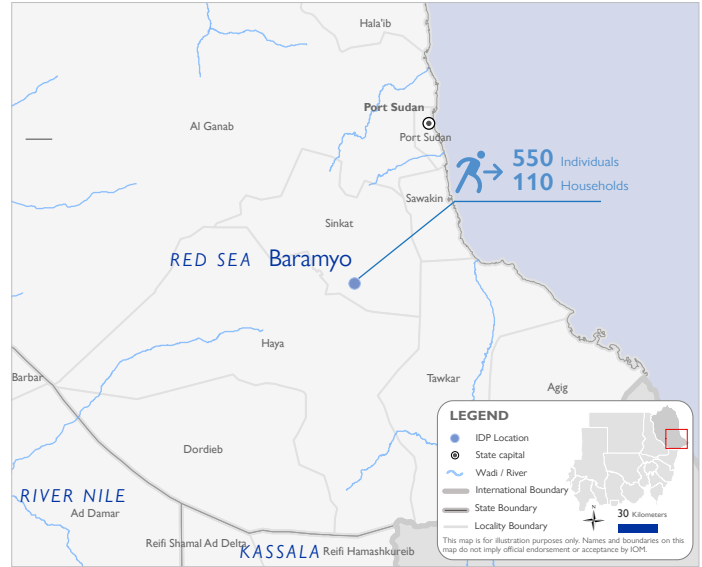
Event Overview



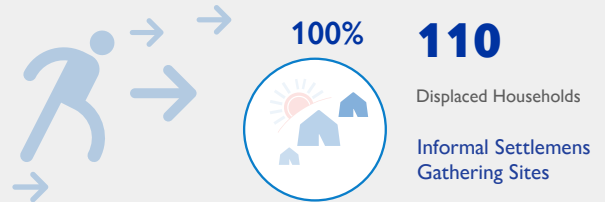
DTM teams activated EET to monitor the displacement of individuals affected by heavy rains and flooding in Baramyo village in Sinkat locality, Red Sea state on 16 November 2022.

The first EET update estimates that a total number of 550 individuals (110 households) are currently displaced to gathering sites in Baramyo village in Sinkat locality, Red Sea state. The IDP caseload (100%) was originally displaced from the same village.

DTM field teams have confirmed that no individuals were killed or injured. There are at least 110 reported cases of lost goods, livestock, and/or cattle. All displaced individuals are Sudanese nationals. At least 213 cases of additional vulnerabilities in need of assistance and support were identified by key informants through DTM's Protection indicator. Additionally, DTM Sudan estimates that there are approximately 83 persons with disabilities among the IDP caseload.* Based on a ranking scale, the three priority needs across the caseload are Emergency Shelter, Non-Food Items, and Water, Sanitation, and Hygiene (WASH).



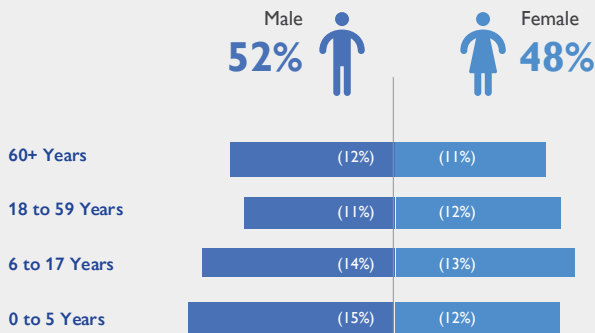
Shelter Indicator



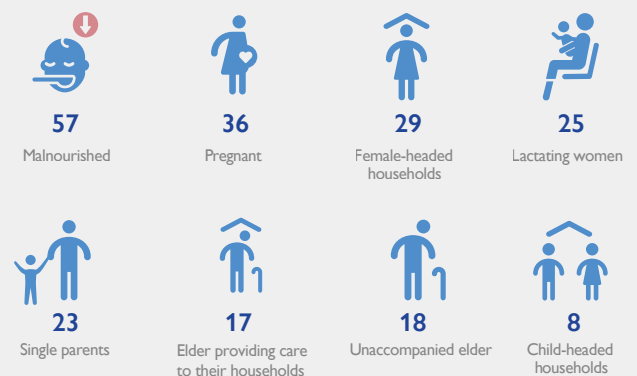
Priority Needs (Ranking scale)



Demographics



Vulnerabilities



Return Intention

Data collected through the return intention indicator estimates that the entire IDP caseload (100%) intends to move to another location.

IOM DISCLAIMER

The opinions expressed in the report are those of the authors and do not necessarily reflect the views of the International Organization for Migration (IOM). The designations employed and the presentation of material throughout the report do not imply the expression of any opinion whatsoever on the part of IOM concerning the legal status of any country, territory, city or area, or of its authorities, or concerning its frontiers or boundaries.

IOM is committed to the principle that humane and orderly migration benefits migrants and society. As an intergovernmental organization, IOM acts with its partners in the international community to assist in the meeting of operational challenges of migration; advance understanding of migration issues; encourage social and economic development through migration; and uphold the human dignity and well-being of migrants.