



As a subcomponent of the Mobility Tracking methodology (Round Four), the Emergency Event Tracking (EET) tool is deployed to track sudden displacement, provide more frequent updates on the scale of displacement, and quantify the affected population when needed.

## Event Overview



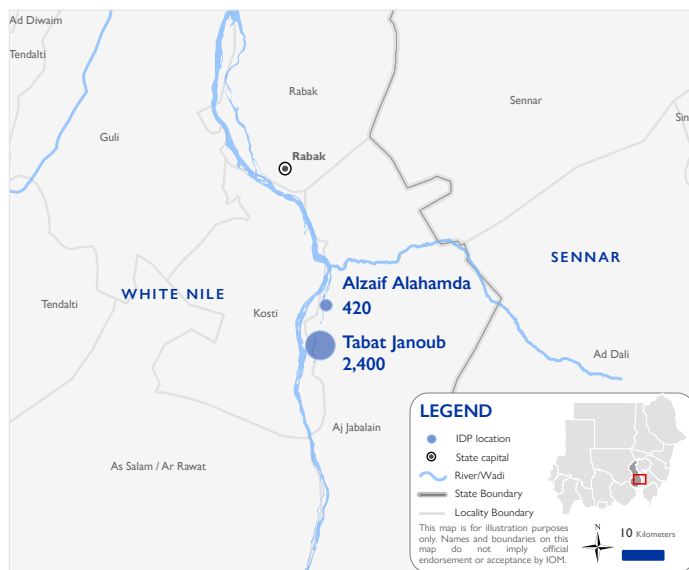
**2,820**  
IDP individuals



**550**  
IDP households

On 30 October 2022, the villages of Albarasha and Shenibo of Al-Jazeera Musran in Aj Jabalain locality, White Nile state, were flooded due to an increase in the White Nile River's water level following operations at the dam in Jebel Awlia, Khartoum. The first EET update estimates a total number of 2,820 IDP individuals (550 households) currently seeking shelter in Tabat Janoub (85%) and Alzaif Alahamda (15%) in Aj Jabalain locality, White Nile. The IDP caseload was originally displaced from the villages of Shenibo (85%) and Albarasha (15%) in Aj Jabalain locality, White Nile.

Field teams estimate, upon triangulation with additional sources of information, that no individuals were killed and three individuals sustained injuries. There are four cases of reported lost goods, cattle, and/or livestock. All displaced individuals are Sudanese nationals. At least 226 cases of additional vulnerabilities in need of assistance and support were identified by key informants through DTM's Protection indicator. Additionally, DTM Sudan estimates that there are approximately 423 persons with disabilities among the IDP caseload.\* Based on a ranking scale, the three priority needs across the caseload are Emergency Shelter, Food, and Water, Sanitation, and Hygiene (WASH).

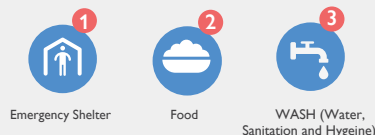


## Shelter Indicator

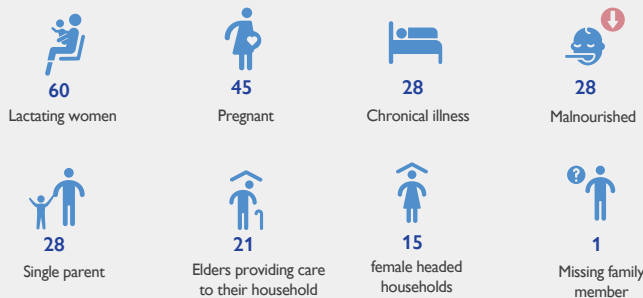


**550**  
Displaced Households  
Informal Open Area Settlements

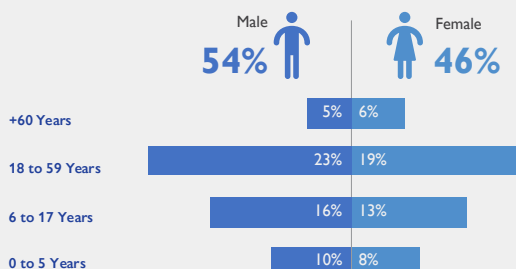
## Priority Needs (Ranking scale)



## Vulnerabilities



## Demographics



## Return Intention

Data collected through the return intention indicator estimates that the entire IDP caseload (100%) intends to remain in their locations of displacement once the flooding subsides.

### IOM DISCLAIMER

The opinions expressed in the report are those of the authors and do not necessarily reflect the views of the International Organization for Migration (IOM). The designations employed and the presentation of material throughout the report do not imply the expression of any opinion whatsoever on the part of IOM concerning the legal status of any country, territory, city or area, or of its authorities, or concerning its frontiers or boundaries.

IOM is committed to the principle that humane and orderly migration benefits migrants and society. As an intergovernmental organization, IOM acts with its partners in the international community to: assist in the meeting



\*DTM Sudan adopts the WHO global estimate that approximately 15% of the total population are persons with disabilities (PwD).