



©IOM 2022

ETHIOPIA NATIONAL DISPLACEMENT REPORT 13

Site Assessment Round 30 & Village Assessment Survey Round 13: June — July 2022

Publication Date: October 2022



USAID
FROM THE AMERICAN PEOPLE

ADDRESS

International Organization for Migration (IOM)
Special Liaison Office (SLO) Ethiopia
Kirkos Sub City, Woreda 8
YeMez Building (Behind Zequala Building)
P.O.Box 25283 Code 1000
Addis Ababa, Ethiopia.
Tel.: +251 1155 71 707
Website: <http://www.ethiopia.iom.int>

For more information, kindly contact DTM Ethiopia at dtmethiopia@iom.int.

DISCLAIMER

The opinions expressed in the report are those of the authors and do not necessarily reflect the views of the International Organization for Migration (IOM). The designations employed and the presentation of material throughout the report do not imply the expression of any opinion whatsoever on the part of IOM concerning the legal status of any country, territory, city or area, or of its authorities, or concerning its frontiers or boundaries.

IOM is committed to the principle that humane and orderly migration benefits migrants and society. As an intergovernmental organization, IOM acts with its partners in the international community to: assist in the meeting of operational challenges of migration; advance understanding of migration issues; encourage social and economic development through migration; and uphold the human dignity and well-being of migrants.

COPYRIGHT

All rights reserved. No part of this publication may be reproduced, stored in a retrieval system, or transmitted in any form or by any means, electronic, mechanical, photocopying, recording, or otherwise without the prior written permission of the publisher.

CONTENTS

Introduction	i-ii
---------------------------	------

Section I

Key Findings: Site Assessment	2
--	---

Methodology	3
--------------------------	---

Overview of Displacement

National Level	4-6
-----------------------------	-----

Regional Level	7-17
-----------------------------	------

Section 2

Key Findings: Village Assessment Survey	19
--	----

Methodology	20
--------------------------	----

Overview of Return

National Level	21
-----------------------------	----

Regional Level	22-30
-----------------------------	-------

Annex A

Summary Table of Displacement	31-39
--	-------

Annex B

Summary Table of Return	40-42
--------------------------------------	-------

INTRODUCTION

Background: Population Mobility and Internal Displacement in Ethiopia

Ethiopia faces significant internal displacement. In 2018, Ethiopia recorded the third highest number of new displacements worldwide, with 3,191,000 internally displaced persons (IDPs) identified.¹ A significant portion of these displacements are conflict-induced, largely related to ethnic and border-based disputes. Old tensions such as the contestation of the Oromia-Somali regional border which first flared up in 2017 continue to persist, while new conflicts have also emerged. Conflict broke out in 2016 over the administrative designation of then Konso woreda in SNNP region; in 2018 Konso was formally recognized as a zone, but in the years since conflict has only continued. In April and later in June 2018, conflict which was aggravated by competition for land and resources broke out between Gedeo and Guji Oromo tribes in West Guji. It is estimated that by August 2018, 748,499 IDPs were displaced from the Gedeo-West Guji conflict alone.² In September 2020 frequent attacks from unidentified armed groups (UAGs) on the border of Benishangul Gumz region led to increasing displacement to Awi zone in Amhara region. This continued to intensify and in January 2021 displacement reached a peak of 76,000 at its height.³

In early November 2020, the regional party of Tigray allegedly attacked the Northern Command of Ethiopia's National Defense Force in Mekelle, Tigray region, prompting a military offensive from the federal government of Ethiopia. Following this, conflict broke out in the North of Ethiopia resulting in significant displacement. After a change of administration in Tigray region at the end of June 2021, the conflict moved further south into Afar and Amhara regions but began to subside around January 2022.

In mid-April 2021, conflict broke out in Ataye City Administration in North Shewa zone of Amhara region and the surrounding areas, which led to mass displacement in the zone. Estimated displacement following the conflict, according to government sources, reached 310,000 IDPs at its peak. This brought displacement in Ethiopia to 4.5 million IDPs as of February 2022.

Climate-induced displacement has become increasingly prominent in Ethiopia. Beginning in 2015, Ethiopia faced one of the strongest onsets of El Niño, a periodic heating of the eastern tropical Pacific, which reduced the *kiremt* rainfall⁴ and successively resulted in drought in the Southern and Southeastern parts of the country.⁵ Somali region is particularly prone to climate induced displacement, having endured two underperforming rainy seasons in 2021 which caused a shortage of pastureland, water and food for pastoralists and their livestock. The performance of the March - June 2022 *Gu* rainfall in parts of central and north-central Ethiopia was below average, and among the lowest amounts recorded in the past 70 years.⁶ The cyclic nature of drought conditions in Ethiopia has contributed to a dearth of water resources, deepening food insecurity in the country and in the wider East and Horn of Africa region. In southern Tigray and the eastern part of Oromia regions rainfall predicted in February 2022 was delayed by about a month, creating unfavourable crop conditions and reducing harvests.⁷ As of July 2022, drought was the primary cause of displacement for 533,923 IDPs (19.7%), with IDPs concentrated in Somali, Oromia and Afar regions. Floods are another major cause of climate-induced displacement, particularly in low lying areas. While Ethiopia continues to cope with the lasting impact of the damage from the overflowing of the Shabelle, Ganale, and Dawa rivers in 2020 which damaged crops, flooding and landslide incidents have been on the rise in six regions affecting nearly 1.1m people according to the Ethiopian Disaster Risk Management Commission (EDRMC).⁸

¹ Internal Displacement Monitoring Centre, 2019. *Global Report on Internal Displacement (GRID) 2019 Report*. Available at: <http://www.internal-displacement.org/sites/default/files/publications/documents/2019-IDMC-GRID.pdf>.

² Displacement Tracking Matrix (DTM), 2018. *Ethiopia — Gedeo/West Guji Rapid Response Assessment Round 2 (11 — 23 August 2018)— Host Community Dataset*. Available at: <https://displacement.iom.int/datasets/ethiopia-%E2%80%94-gedeowest-guji-rapid-response-%E2%80%94-host-community-dataset-%E2%80%94-site-assessment-%E2%80%94-round>.

³ Displacement Tracking Matrix (DTM), 2021. *Ethiopia — National Displacement Report (March - April 2021)*. Available at: <https://displacement.iom.int/reports/ethiopia-%E2%80%94-national-displacement-report-8-march-%E2%80%94-april-2021?close=true>.

⁴ Kiremt rain is the summer rain that normally lasts between June to September. This rain is crucial for the main meher harvest. Conversely, the belg rain is the spring rain that usually spans between March to August.

⁵ USAID, 2016. *El Niño in Ethiopia 2015 – 2016: A Real-Time Review Of Impacts And Responses*. Available at: <https://www.agri-learning-ethiopia.org/wp-content/uploads/2016/06/AKLDP-El-Nino-Review-March-2016.pdf>.

⁶ Food Security and Nutrition Working Group, 2022. *Extremely high levels of food insecurity observed across Ethiopia, Kenya, and Somalia*. Available at: https://www.icpac.net/documents/599/FSNWG_Drought_Special_Report_29_July_2022.pdf

⁷ Ibid.

⁸ UNFPA, 2022. *UNFPA Ethiopia Humanitarian Response Situation Report - July 2022*. Available at: <https://reliefweb.int/report/ethiopia/unfpa-ethiopia-humanitarian-response-situation-report-july-2022>

Adding to the high mobility landscape of Ethiopia is the number and rate of returns. Following the reduction in conflict in January 2022 in many parts of Afar and Amhara regions affected by the Northern Ethiopia Crisis, returns have begun which can be seen in the +422% increase in returns in Afar region and +584% increase in Amhara region in January and February 2022.⁹ Throughout June and July 2022 both spontaneous and government-led returns continued which led to a growing rate of returning IDPs in Afar (+12%) and Amhara (+16%) regions.

In March 2020, the Ministry of Health confirmed the first COVID-19 case in Ethiopia. Since then, the number of confirmed COVID-19 cases has increased to 473,188 cases as of 1 June 2022.¹⁰ The spread of COVID-19 and regulations to curb it has caused unemployment and has exacerbated the food insecurity situation in the country.

IOM Population Observation in Ethiopia

In order to capture population mobility and internal displacement in Ethiopia, IOM's Displacement Tracking Matrix (DTM) is deployed to track internally displaced persons (IDPs), returning IDPs, migrants and returned migrants. IOM entered into partnership with the Ethiopia Disaster Risk Management Commission (EDRMC) in August 2016, and has since been regularly implementing DTM assessments in Ethiopia since September 2016.

DTM tools that are active in Ethiopia, include a quarterly Site Assessment (SA) which focuses on tracking internal displacement and a quarterly Village Assessment Survey (VAS) aimed at tracking returns. SA covers areas where there are reports of 20 or more IDP households, whereas VAS covers areas where there are reportedly 20 or more returning IDP households that returned on or after 1 January 2021.

Figure 1 illustrates DTM's coverage of its SA and VAS tools. The areas in blue represent areas that were exclusively covered by SA, while the areas in yellow represent areas that were only covered by VAS. The areas in green represent areas where both SA and VAS were deployed. The areas covered in red stripes represent areas that were inaccessible due to operational constraints, while the yellow with red stripes represents areas inaccessible due to security and environmental factors.

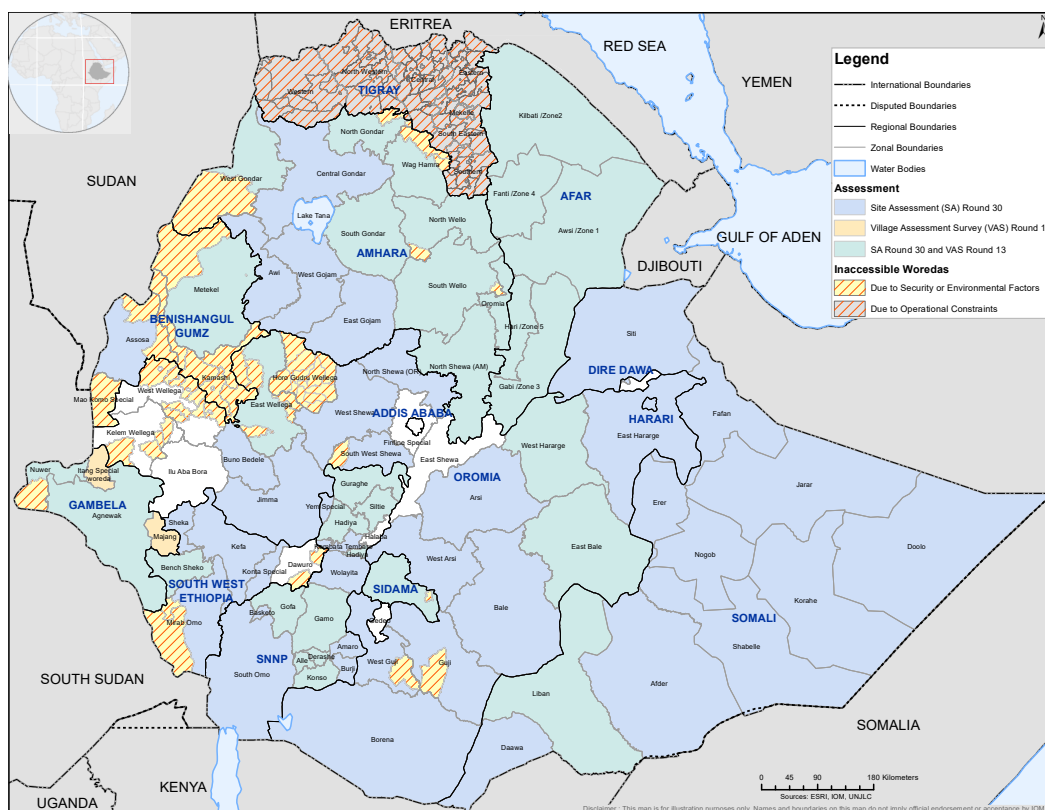


Figure 1: Geographic coverage of DTM assessments in May, June and July 2022.

⁹ Displacement Tracking Matrix (DTM), 2022. Ethiopia — National Displacement Report 11 (December 2021 — February 2022). Available at: <https://dtm.iom.int/reports/ethiopia-%E2%80%94-national-displacement-report-11-december-2021-%E2%80%94-february-2022-1>.

¹⁰ Ministry of Health, Ethiopia, 2022. Available at: <http://www.moh.gov.et/ejcc/>.

Section I

Site Assessment (SA)

tracking internal displacement

KEY FINDINGS — SITE ASSESSMENT



2,120 sites covered



430 inaccessible sites

Internally Displaced Persons (IDPs) — Nationwide



2,716,121 individuals*



522,138 households



-1.58% decrease in IDPs since National Displacement Report 12*
 (where there were 2,759,739 IDPs*)

Top 3 Reasons for Displacement



1,810,765 conflict displaced IDPs
 (66.7%) in 1,592 sites



533,923 drought displaced IDPs
 (19.7%) in 315 sites



123,176 social tension displaced IDPs
 (4.5%) in 41 sites

National Displacement Caseload Overview

REGION	SITE ASSESSMENT (NUMBER OF IDPs)
AFAR	74,945
AMHARA	559,457
BENISHANGUL GUMZ	118,955**
DIRE DAWA	570
GAMBELA	20,288
HARARI	3,133
OROMIA	662,677
SIDAMA	49,243
SNNP	200,510
SOMALI	1,008,773
SOUTH WEST ETHIOPIA PEOPLES	17,570
GRAND TOTAL	2,716,121

Other reasons for displacement included: Seasonal Floods (105,524 IDPs), Flash Floods (99,348 IDPs), Landslides (25,075 IDPs), Swampy Lands (9,265 IDPs), Hydropower Projects (4,978 IDPs), and Strong Winds (4,067 IDPs).

*Due to operational constraints in Tigray region, the region is not included in the Site Assessment Round 30. Insecurity affected coverage in Benishangul Gumz in round 29, which also influenced the number of IDPs covered in the region. This explains the large percentage decrease in IDPs for the region in Site Assessment round 30.

** Insecurity continued to pose issues for data collection in Benishangul Gumz region, which has likely lowered the number of IDPs reported for the region.

SITE ASSESSMENT METHODOLOGY



Data collection:
 24 May — 9 July 2022

IOM Ethiopia employs a series of tools in its DTM. The present methodology refers to the Site Assessment tool which falls under the Mobility Tracking component of the DTM. Data for this tool is collected at the zonal, woreda and site level on a quarterly basis. Since September 2016, IOM Ethiopia has conducted 30 rounds of data collection. The DTM programme is implemented in close collaboration with the Ethiopia Disaster Risk Management Commission (EDRMC) and regional, zonal and woreda counterparts.

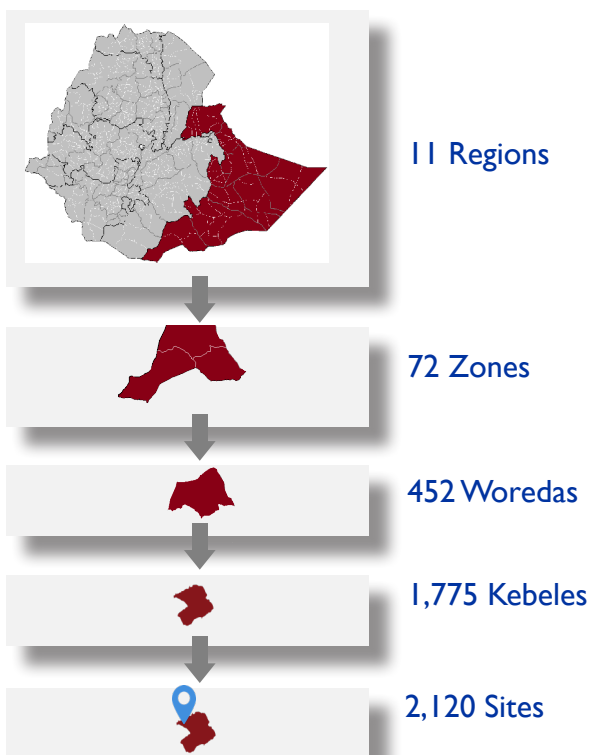
Woreda level: Information is collected through key informants at woreda level and data collected includes number of displaced households and individuals at woreda level, site typology and approximate locations of identifiable displacement sites among other indicators. The information is used to plan the roll out of the Site Assessment.

IOM’s DTM team is composed of 180 field enumerators, under the direct supervision of 15 field focal points, and the overall supervision of the DTM team based at IOM’s Addis Ababa Country Office. The data collection methodology is divided into three administrative levels:

Site level: Site assessment is conducted in locations hosting a reported 20 or more IDP households defined through previous interviews at higher administrative levels. These locations include host communities. Information is collected through focus group discussions, key informant interviews and direct observation. Focus groups include IDP representatives as well as men, women, elderly and youth. Site Assessment gathers information on IDPs including on their locations, their areas of origin, reasons for displacement, household demographics and the availability of services in their areas of displacement. Sites with fewer than 20 households are not assessed.

Zone level: Data is collected through interviews with key informants from the Disaster Risk Management Office (DRMO), community representatives, and the education and health offices. This data includes the estimated number of displaced individuals, a list of woredas within the zone that hosts displaced persons, reasons for displacement, time of arrival of IDPs and their locations.

Coverage of this round



430 Inaccessible Sites

In round 30, 430 sites were inaccessible. 402 sites had insecurity issues, mainly in West Wallaga, East Wallaga, West Guji, Kellem Wallaga and Guji zones. 27 sites were inaccessible due to road issues mainly in Dawa, Hadiya, Awsi (Zone 1), Fenti (Zone 2), Hari (Zone 5), Assosa and East Harerge zones. One site was inaccessible due a shortage of fuel in Jimma zone.

OVERVIEW OF DISPLACEMENT

National Level

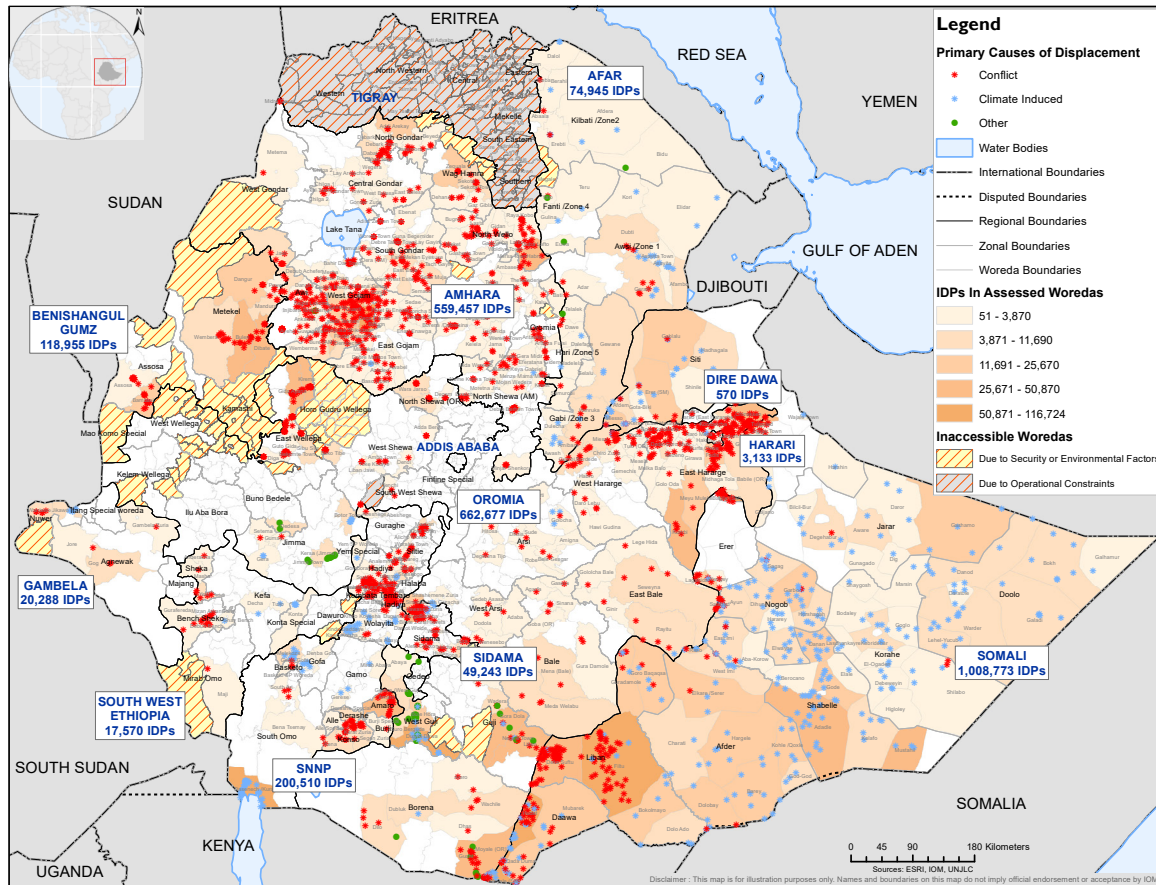


Figure 2: The displacement caseload in Ethiopia based on data collected June to July 2022 from the Site Assessment. Due to the greater IDP caseload, data collection in Amhara and Oromia regions began in May 2022.

According to data collected through the Site Assessment round 30 in June and July 2022, 2.72 million IDPs (522,138 households) were internally displaced across 2,120 accessible sites in Ethiopia. This reflects a -1.58% decrease of 43,618 IDPs compared to the previous round of data collection in March and April 2022.

The gender breakdown of IDPs is almost equal with 1,349,612 males (49.7%) and 1,366,509 females (50.3%). Conflict remains the primary cause of displacement and displaced 1.8 million IDPs (66.7%), followed by drought which displaced 533,923 IDPs (19.7%), social tension which displaced 123,176 IDPs (4.5%), seasonal floods which displaced 105,524 IDPs (3.9%), flash floods which displaced 99,348 IDPs (3.7%), landslides which displaced 25,075 IDPs (<1%), swampy land which displaced 9,265 IDPs (<1%), hydropower projects which displaced 4,978 IDPs (<1%) and strong winds which displaced 4,067 IDPs (<1%).

Drought continues to constitute a large portion of the IDP caseload this round. Significant changes were noted on a zone level, where increases in reports of drought as the initial cause of displacement were particularly evident in Borena zone in Oromia region (+3,665 IDPs or a +108% increase) and Nogob zone in Somali region (+8,484 IDPs or a +23% increase).

National Displacement Timeline

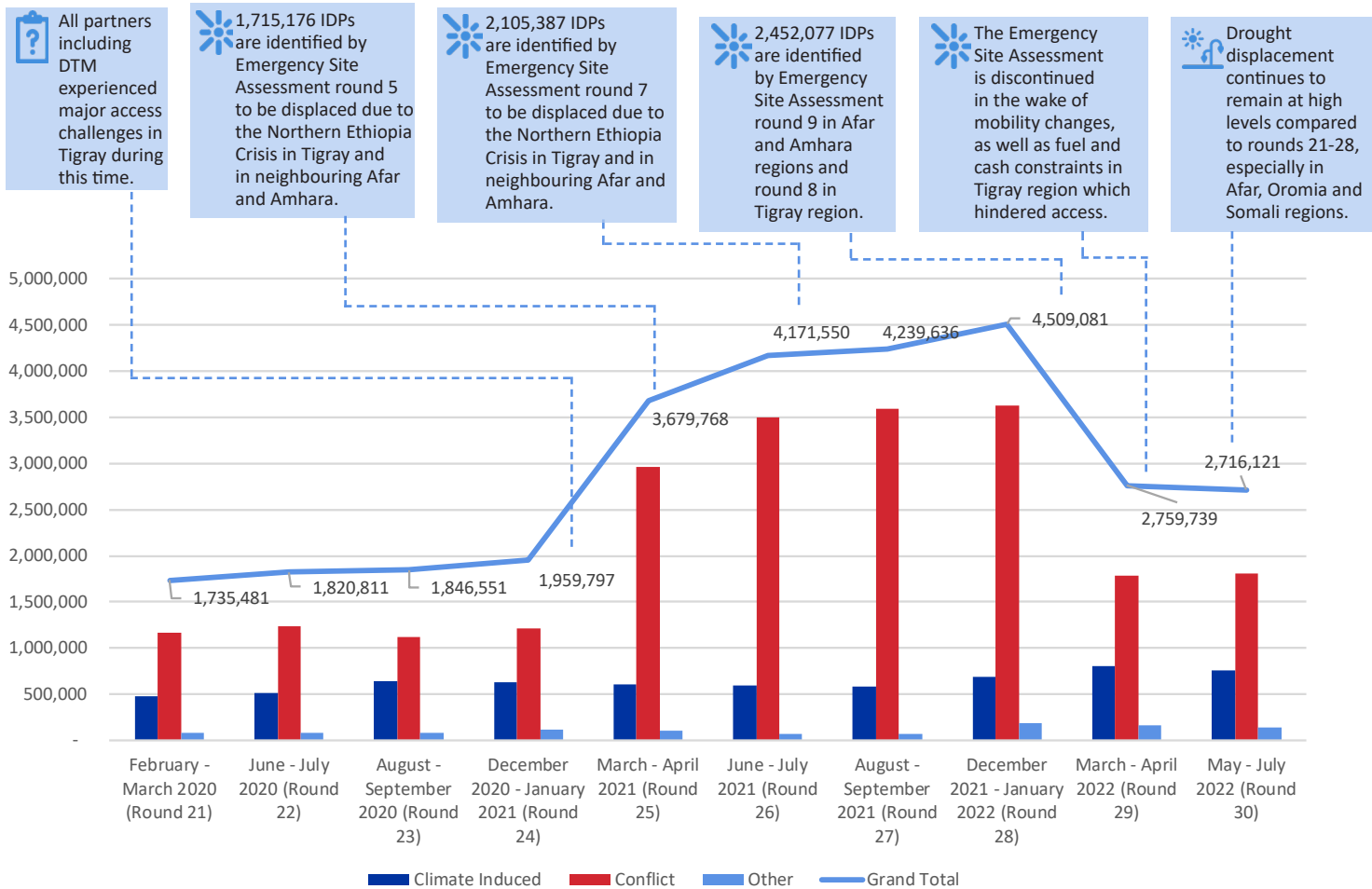


Figure 3: Number of IDPs identified nationwide by DTM since February - March 2020 (SA round 21). Round totals include displacement data captured through previously conducted Rapid Response Assessments and Emergency Site Assessments.

IOM Ethiopia has been collecting data on internal displacement via its Site Assessment tool for 30 rounds now. Round 21 (February-March 2020) experienced increases in the number of IDPs to 1.74 million IDPs.

In round 22 (June-July 2020), the total number of IDPs increased to 1.82 million largely explained by the new coverage of SNNP and Sidama regions which captured an additional 93,982 IDPs. There was only a marginal increase in round 23 (August-September 2020) to 1.84 million IDPs. In round 24 the number of IDPs increased to 1.95 million IDPs. In round 25 (March-April 2021), the total number of IDPs increased to 3.7 million. This increase was due to the 1.7 million IDPs displaced by the Northern Ethiopia Crisis and identified through Emergency Site Assessment (ESA) round 5.

In round 28 of Site Assessment carried out in December 2021 and January 2022, the number of IDPs increased to 4.5 million IDPs throughout the country including 2.45 million IDPs displaced by the Northern Ethiopia Crisis identified through Emergency Site Assessment (ESA) round 9 (January - February 2022) in Afar and Amhara regions and ESA round 8 (August 2021) in Tigray region. Since then the ESA was discontinued, and Site Assessment was carried out nationwide including in Afar and Amhara regions. Following returns and operational constraints the figure for round 29 Site Assessment dropped to 2.75 million IDPs. As of round 30, the total IDP figure declined to 2.72 million IDPs. Due to operational constraints, the IDP figure for Tigray region is not included in the national displacement figure. The national IDP caseload should be higher.

Length of Displacement

IDPs by Length of Displacement in Years



Percentage of IDPs by Length of Displacement

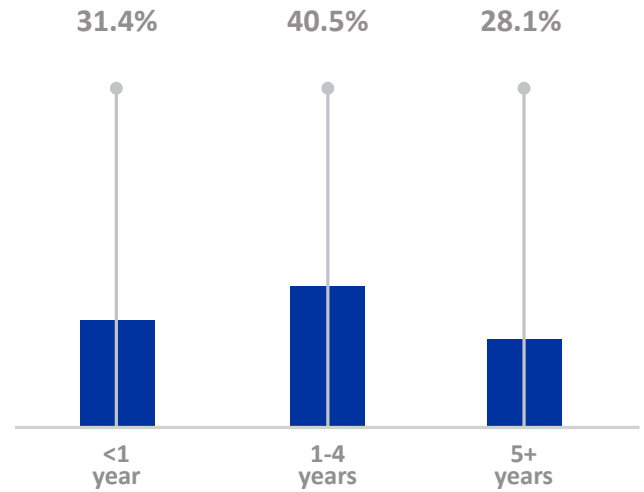


Figure 4: Length of displacement of IDPs identified nationwide by DTM since June - July 2022 (SA round 30).

Length of Displacement: Under 1 Year

IOM Ethiopia began collecting data on IDPs' length of displacement as of Site Assessment round 30. A total of 852,923 IDPs reported that they had been displaced within one year (31.4% of total IDP caseload). Most IDPs who were displaced within the last 12 months were in Oromia (32.4% IDPs) and Amhara (31.9% IDPs) regions.

Length of Displacement: Between 1-4 Years

Results from this round indicated that under half of IDPs assessed (40.5%) have been displaced between 1 and 4 years. The total 1,098,947 IDPs who have been displaced between 1 and 4 years are mainly in Somali and Amhara regions, respectively accounting for 27.5% and 25.9% of IDPs displaced between 1-4 years.

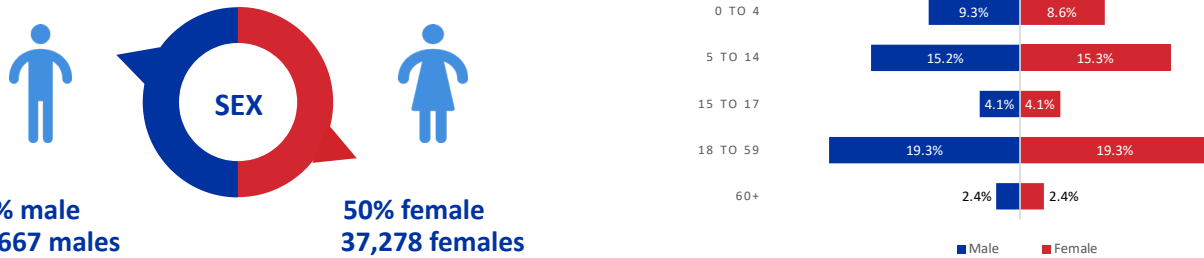
Length of Displacement: 5+ Years

The number of IDPs who reported to have been displaced for over five years was the lowest of all the displacement time frames, yet still constitutes over one quarter (28.1%) of IDPs across Ethiopia. Most IDPs who have been displaced for over five years are in Somali region (66.9% of IDPs displaced over five years), followed by Oromia region (26.3% of IDPs displaced over five years). Out of the IDPs who have been displaced for over 5 years, a total of 26,167 IDPs were displaced 10 or over 10 years ago (3.4% of national IDP caseload). The majority of IDPs who have been displaced for 10 years or more are in Oromia region (18,664 IDPs or 71.3% of IDPs displaced 10+ years) and 7,500 IDPs are displaced in Somali region (28.7% of IDPs displaced 10+ years).

Afar



Sex and age breakdown of IDPs



14,381 households comprising 74,945 IDPs were identified in 67 sites in Afar region. These figures represent a decrease of 62,468 IDPs (-45.46%) since the previous round 29 (March – April 2022). Following a reduction in conflict in the region in January 2022, both spontaneous and government-led returns have continued throughout this round. This is evident in the closure of 31 IDP sites particularly in Zone 2 (Kilbati) where 21 sites were closed. Seven sites were inaccessible for data collection due to insecurity, and another seven were not covered because of road inaccessibility. Though conflict was the primary reason for displacement in the region (34,880 or 46.54%), 31,955 IDPs were also displaced by flash floods (42.64%) and another main reason for displacement included 5,368 IDPs who were displaced by drought (7.16%). Drought as the primary reason for displacement was most reported in Zone 5 (Hari) this round, constituting 37% of total drought-related displacement in the region. However, insecurity has complicated access to a significant proportion of the region, meaning that the rate at which IDPs are reporting drought as the main cause of displacement should likely be higher. Over half (54%) of IDPs mainly in Zone 1 (Awsi) and Zone 3 (Gabi) have been displaced between 1 and 4 years. The remaining 30.7% have been displaced under one year and 15.3% have been displaced over five years.

Displacement Caseload and Causes of Displacement in Afar

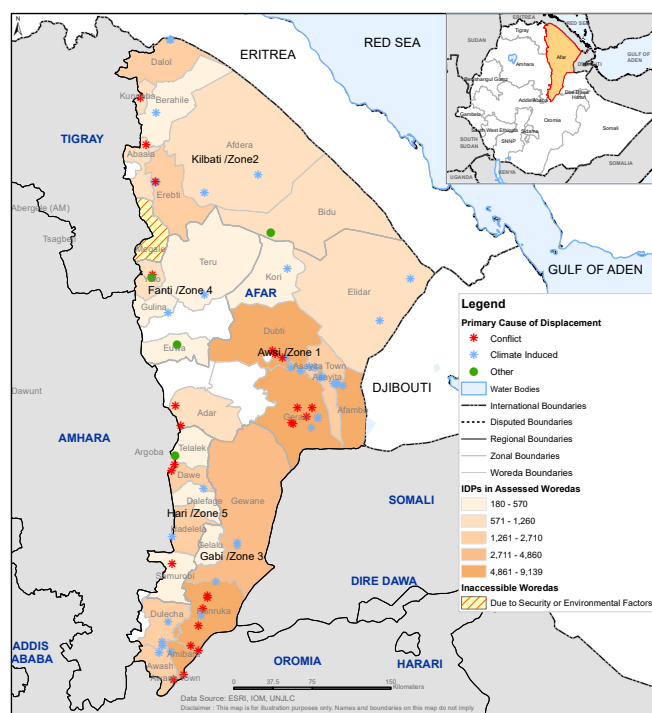


Figure 5: Displacement figures for Afar region based on Site Assessment round 30.

Amhara



Sex and age breakdown of IDPs



139,730 IDP households comprising 559,457 IDPs were identified in 583 sites in Amhara region. These figures represent an increase of 29,875 IDPs (+5.64%) since the previous round 29 (March - April 2022). This increase can be attributed to new arrivals in existing sites that were not covered previously, as well as coverage in 36 sites that opened since the beginning of 2022, 15 of which are located in North Shewa zone. Due to insecurity in certain areas 16 sites were not covered, and 4 remained inaccessible due to road conditions. Despite the withdrawal of armed forces in January 2022, conflict-related displacement is still prevalent in the region. West Gojam zone has the highest caseload of IDPs in the region, constituting over a third (34%) of IDPs, all of whom were displaced by conflict. Overall, conflict-related displacement rose in Wag Himra zone by +26,662 IDPs since the last round. North Wollo zone also saw an increase of +11,055 IDPs reporting conflict as the main cause of displacement while in East Gojam zone there was an increase of +1,311 IDPs displaced due to conflict. Conflict displaced a total of 558,352 IDPs (99.8%), while social tension and landslides displaced a total of 1,105 IDPs (0.2%). Just over half (50.9%) of IDPs mainly in West Gojam and North Gonder zones have been displaced between 1 and 4 years. The remaining 48.7% have been displaced under one year and 0.4% of IDPs have been displaced over five years.

Displacement Caseload and Causes of Displacement in Amhara

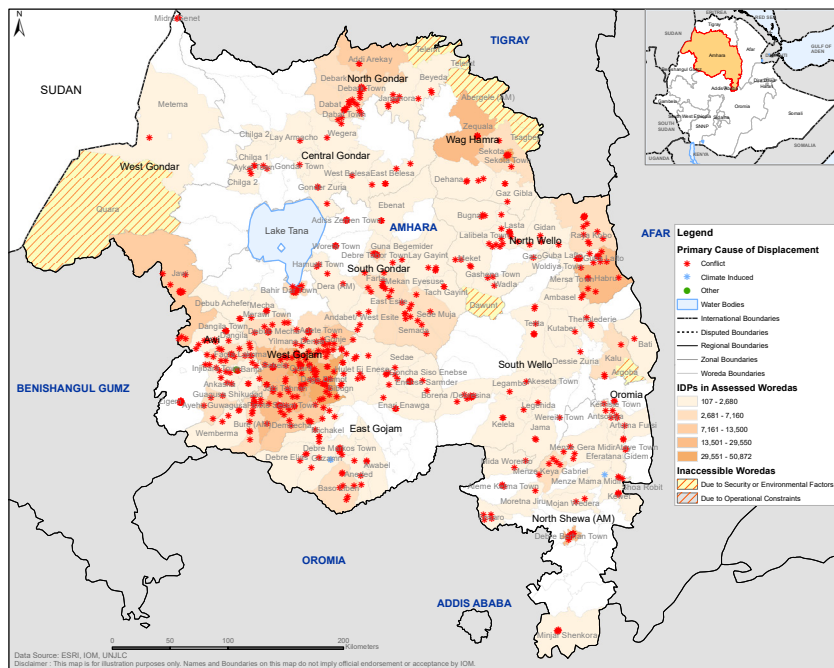
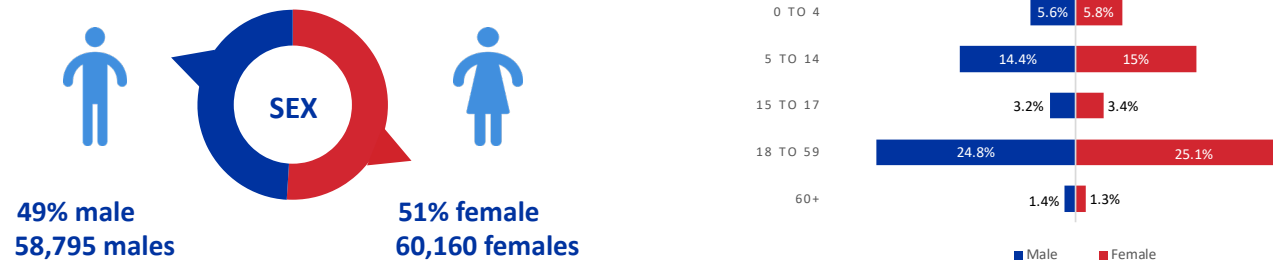


Figure 6: Displacement figures for Amhara region based on Site Assessment round 30.

Benishangul Gumz



Sex and age breakdown of IDPs



22,598 households comprising 118,955 IDPs were identified in 59 sites in Benishangul Gumz region. The region was largely inaccessible due to insecurity in rounds 28 and 29, which has contributed to the increase of +90,883 IDPs since round 29 (March — April 2022). Previously, insecurity in the region hampered data collection in Metekel zone. In this round, a total of 104,288 IDPs were covered in 37 sites in Metekel zone, to which the increase in IDP numbers since the last round can be attributed. Kemashi zone and Mao Komo Special woreda still remained uncovered this round due to security concerns. Security concerns also prevented data collection in another 27 sites across eight woredas and two sites were uncovered due to road inaccessibility, indicating that displacement figures for Benishangul Gumz region should be higher. Conflict was the primary cause of displacement for an estimated 118,955 IDPs, or 100% of the displaced population. 87.8% of IDPs mainly in Metekel and Assosa zones have been displaced between 1 and 4 years. The remaining 12.2% have been displaced under one year.

Displacement Caseload and Causes of Displacement in Benishangul Gumz

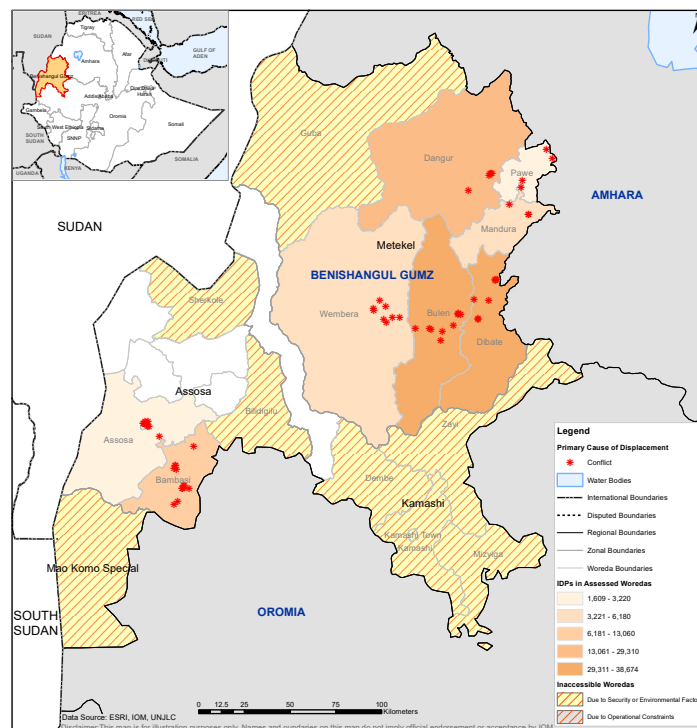


Figure 7: Displacement figures for Benishangul Gumz region based on Site Assessment round 30.

Dire Dawa



Sex and age breakdown of IDPs



114 households comprising 570 IDPs were identified in 1 site in Dire Dawa region. There was no change in the number of IDPs in the region since the previous round 29 (March — April 2022). Conflict was the primary reason for displacement for 570 IDPs, or 100% of the displaced population. 87.7% of the displaced population has been displaced between 1 and 4 years, while the remaining 12.3% of IDPs have been displaced between 1 and 4 years.

Displacement Caseload and Causes of Displacement in Dire Dawa

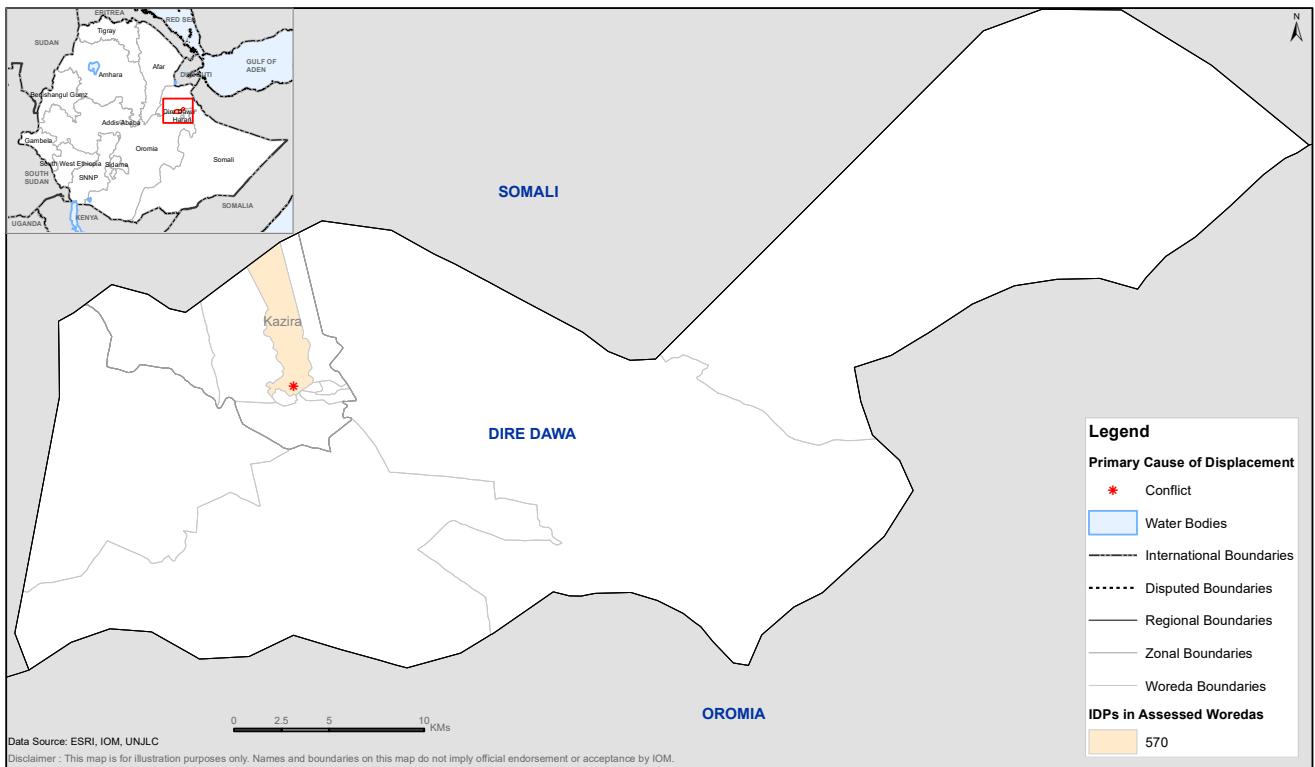
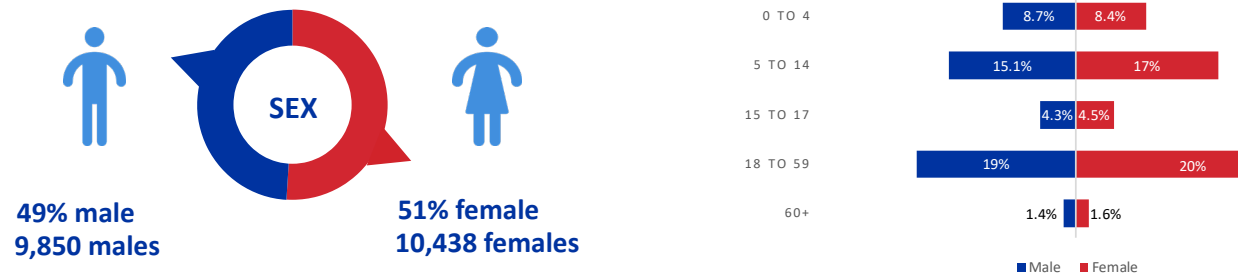


Figure 8: Displacement figures for Dire Dawa in round 30.

Gambela



Sex and age breakdown of IDPs



3,621 households comprising 20,288 IDPs were identified in 12 sites in Gambela region. These figures represent a decrease of 6,573 IDPs (-24.47%) since round 29 (March — April 2022). The decrease is due to five sites that were inaccessible due to security concerns, specifically four sites in Lare woreda and one site in Wanthoa woreda which host high numbers of IDPs. Alongside these uncovered sites in Nuer zone, one site in Itang woreda was also uncovered due to insecurity. Seasonal floods were the main reason for displacement for an estimated 11,659 IDPs, or 57.47% of the displaced population, pushing conflict-related displacement to the second most reported reason compared to the last round. The remaining 8,629 IDPs (42.53%) were displaced due to conflict. Over half (55.3%) of IDPs mainly in Agnewak and Nuer zones have been displaced under one year. Another 34.4% of IDPs have been displaced over five years, and the remaining 10.4% have been displaced between 1 and 4 years.

Displacement Caseload and Causes of Displacement in Gambela

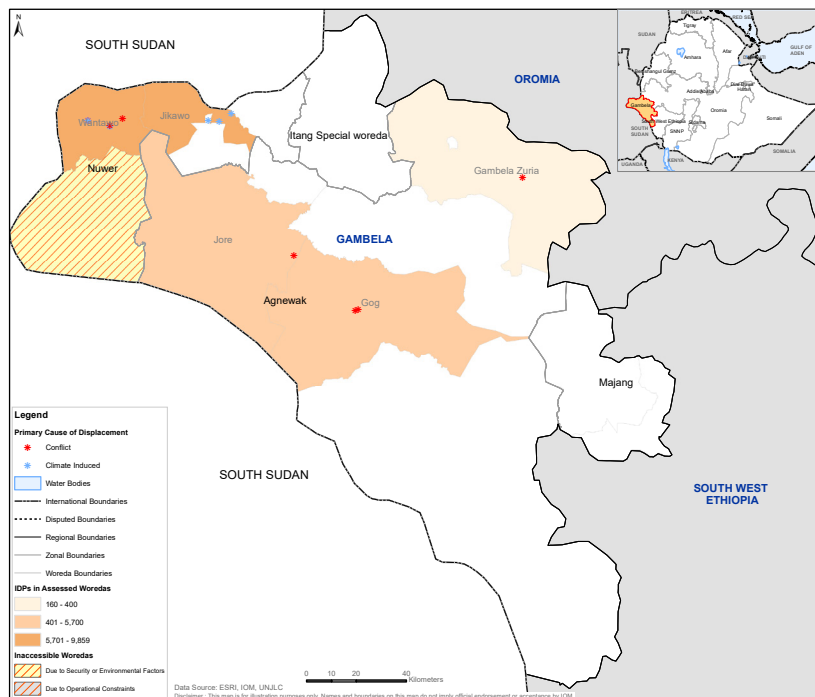
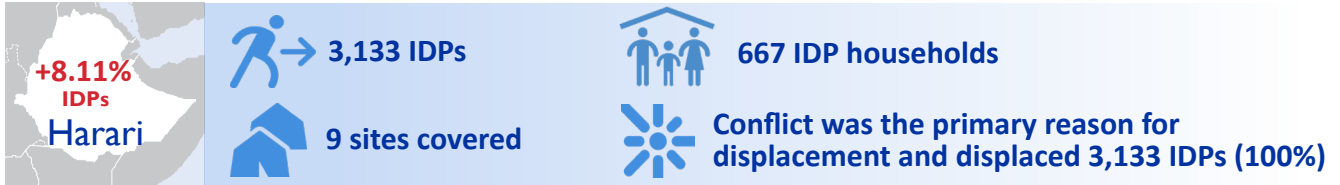


Figure 9: Displacement figures for Gambela region in round 30.

Harari



Sex and age breakdown of IDPs



667 households comprising 3,133 IDPs were identified in 9 sites in Harari region. These figures represent an increase of 235 IDPs (+8.11%) since round 29 (March — April 2022). The increase in the IDP number is due to the inclusion of a new site. Conflict was the main reason for displacement for an estimated 3,133 IDPs, or 100% of the displaced population. The vast majority of the displaced population (91.6%) in Harari region have been displaced between 1 and 4 years and 8.4% have been displaced for over five years.

Displacement Caseload and Causes of Displacement in Harari

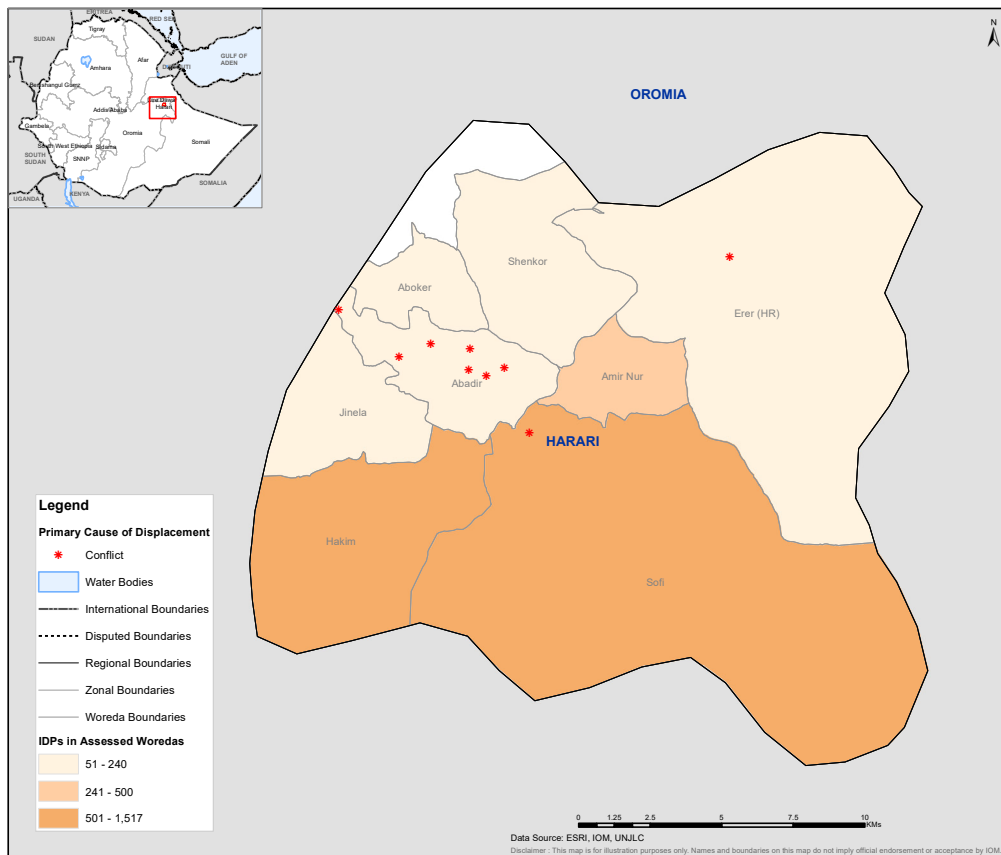
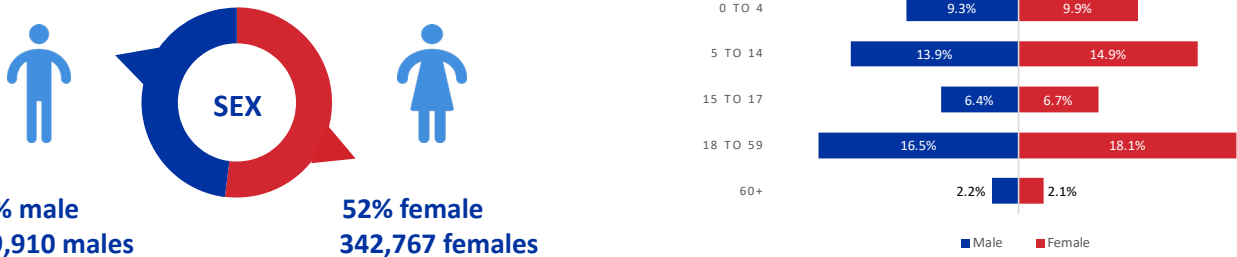


Figure 10: Displacement figures for Harari region in round 30.

Oromia



Sex and age breakdown of IDPs



124,212 households comprising 662,677 IDPs were identified in 520 sites in Oromia region. Since the last round (March - April 2022), there has been a decrease of 91,526 IDPs in the region. One reason for this decrease is that the presence of unknown armed groups (UAGs) in West and Kellam Wallagas severely constricted operational access in 130 sites that were previously covered. Another 85 sites in Guji and West Guji zones could not be covered due to the presence of UAGs, and five sites in Arsi zone were uncovered due to intensified insecurity, meaning that the regional displacement total, especially that related to conflict, should be higher. East Bale zone saw a small amount of rain which prompted returns in the zone, also contributing to the decrease in IDP numbers this round. In this round, the number of IDPs in the region that reported drought as the primary reason for displacement dropped by 27.85% compared to round 29. Although the number of IDPs reporting drought-related displacement declined, this decrease is not an indication that the drought conditions are improving in the region. In West Guji zone for example 47% of IDPs report drought as the main factor driving displacement, and in West Arsi zone key informants report serious food availability concerns likely connected to the drought despite not reporting drought displacement. In Borena zone, the 7,050 IDPs reporting drought as the main reason for displacement are more than double that of the previous round (3,385 IDPs), while in Guji zone the rate at which IDPs were reporting drought-induced displacement rose by 0.36% compared to round 29. Conflict remained the primary reason for displacement for an estimated 403,076 IDPs (60.83%). 138,701 IDPs (20.93%) were displaced due to other reasons*, 117,326 IDPs (17.7%) were displaced due to drought, 1,635 IDPs (0.25%) due to flash floods, 1,015 IDPs (0.15%) due to landslides and 924 IDPs (0.14%) due to seasonal floods. 41.8% of IDPs mainly in West Guji, Guji and East Wallaga zones have been displaced for less than a year. Another 30.3% have been displaced over five years, out of whom 18,664 IDPs have been displaced for 10 or more years. The remaining 27.9% of IDPs have been displaced between 1 and 4 years.

Displacement Caseload and Causes of Displacement in Oromia

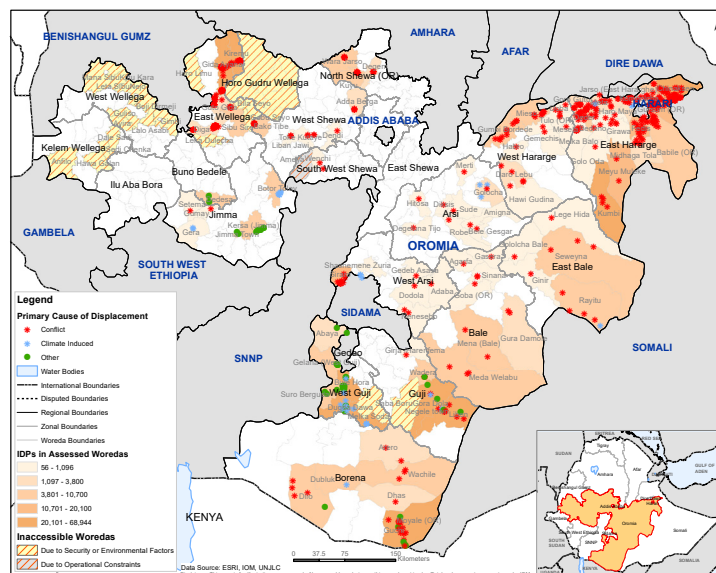


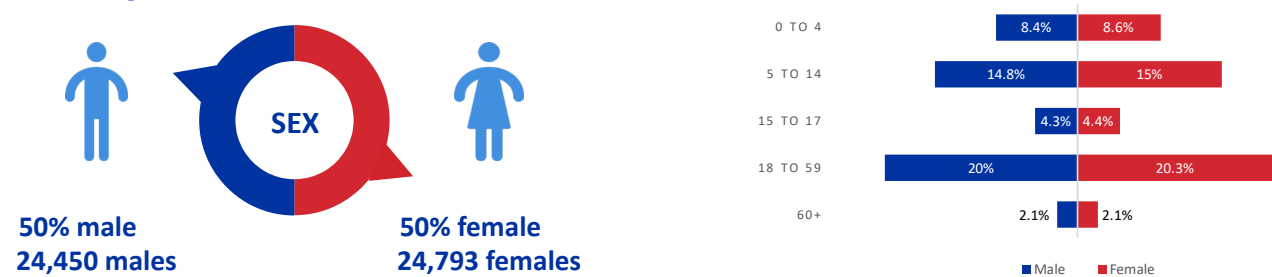
Figure 11: Displacement figures for Oromia region in round 30.

*Other reasons included displacement due to social tension, swampy land, hydropower projects and wind.

Sidama



Sex and age breakdown of IDPs



7,974 households comprising 49,243 IDPs were identified in 56 sites in Sidama region. These figures represent an increase of 3,813 IDPs (+8.39%) since round 29 (March — April 2022). This increase in IDP figures is mainly due to the full coverage of new locations in the region this round. Conflict was the primary reason for displacement for 48,010 IDPs (97.5%), followed by flash floods which displaced 1,233 IDPs (2.5%). 77.3% of IDPs mainly in Zone 1 have been displaced between 1 and 4 years, and the remaining 22.7% have been displaced under one year.

Displacement Caseload and Causes of Displacement in Sidama

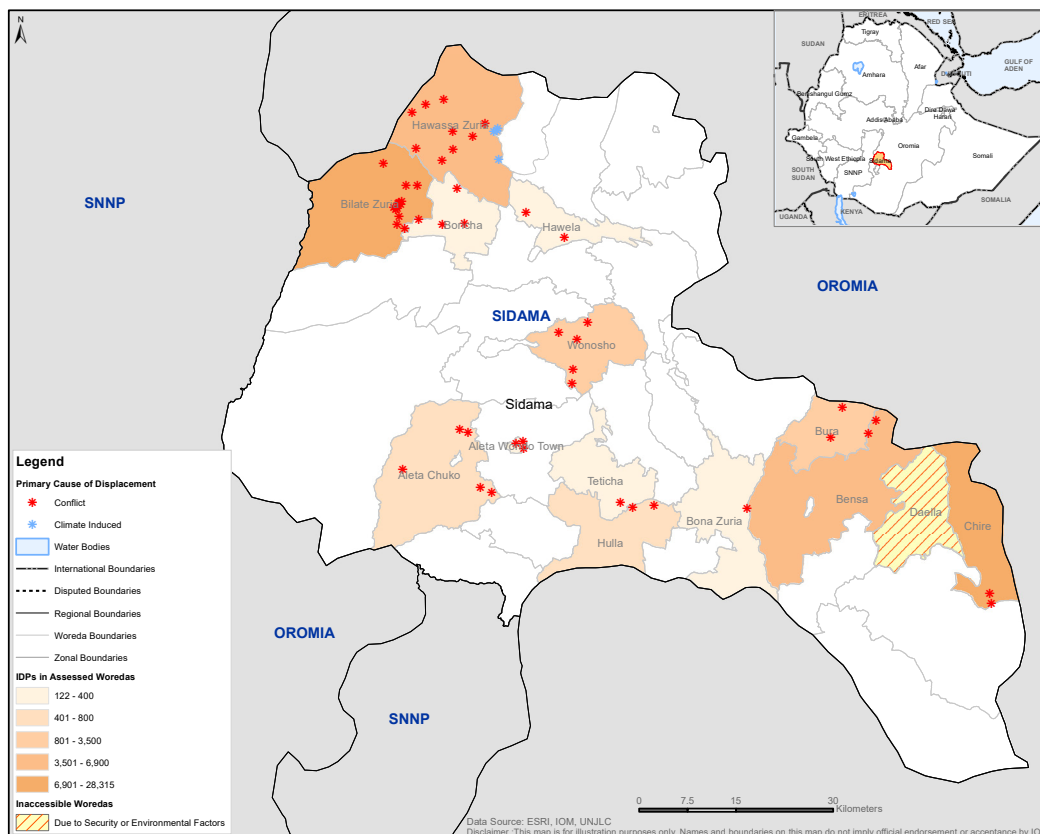
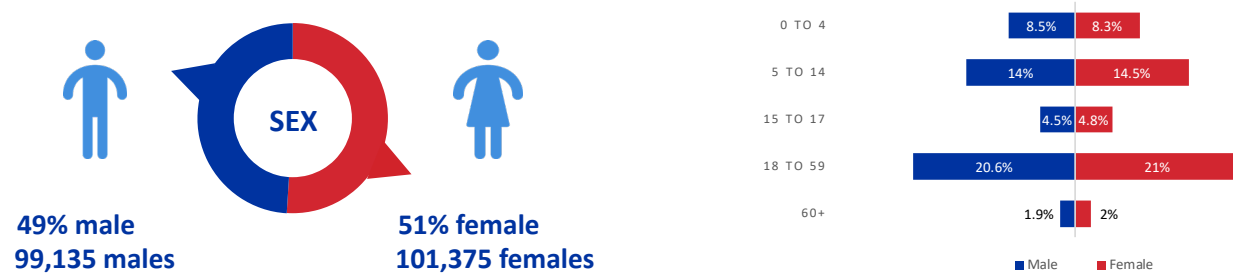


Figure 12: Displacement figures for Sidama region in round 30.

SNNP



Sex and age breakdown of IDPs



38,030 households comprising 200,510 IDPs were identified in 265 sites in SNNP region. These figures represent an increase of 9,720 IDPs (+5.09%) since round 29 (March — April 2022). This increase is mainly related to the extension of coverage in new sites in South Omo zone where 1,790 conflict-displaced IDPs were reported. This represents almost triple the number of IDPs displaced due to conflict reported in the zone in the last round (685 IDPs), while the numbers of IDPs displaced due to seasonal or flash floods in South Omo zone have stayed at similar levels since round 28 (December 2021 — February 2022). In addition, the opening of two sites in South Omo zone and Ale Special woreda in mid-June contributed to the increases in IDPs reported. A total of 10 sites in SNNP region were inaccessible due to insecurity and road accessibility. Conflict continues to be the primary reason for displacement for 107,895 IDPs (53.8%). Flash floods displaced 41,419 IDPs (20.7%), seasonal floods displaced 30,089 IDPs (15%) and landslides displaced 21,107 IDPs (10.5%). 62.5% of IDPs mainly in South Omo and Hadiya zone have been displaced between 1 and 4 years. Another 23.3% have been displaced under one year, and 14.2% of IDPs have been displaced for over five years.

Displacement Caseload and Causes of Displacement in SNNP

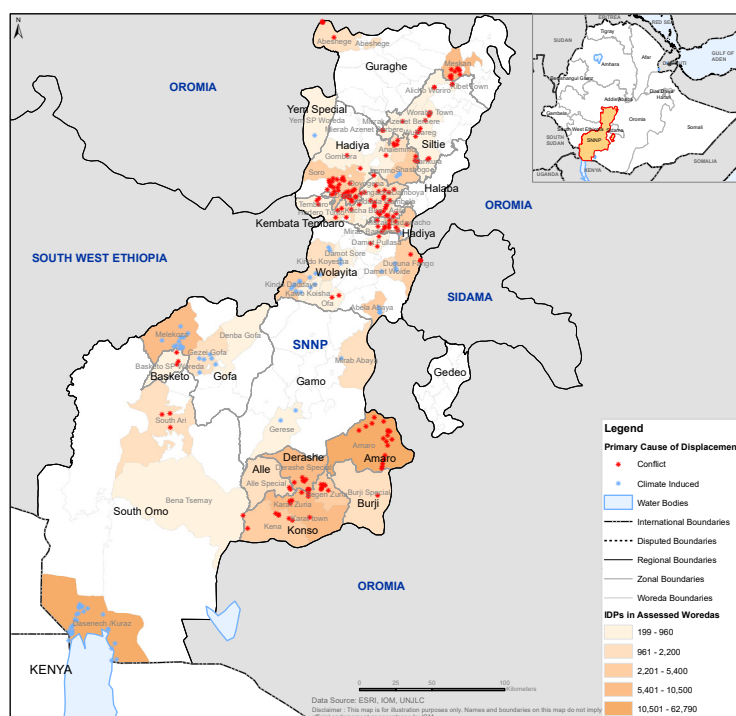


Figure 13: Displacement figures for SNNP region in round 30.

Somali



Sex and age breakdown of IDPs



167,452 households comprising 1,008,773 IDPs were identified in 519 sites in Somali region. These figures represent a decrease of 18,551 IDPs (-1.81%) since round 29 (March — April 2022). This decrease was largely due to the fact that IDPs have left 11 sites mainly in Shabelle, Doolo and Korahe zones in search of access to basic assistance and other services. Due to operational constraints 11 sites in Qubi and Mayumuluqo woredas in Erer zone were uncovered. In Afder zone there was an increase of +11,550 IDPs displaced due to drought since the last round, and in Nogob zone it was +8,484 IDPs. Despite these increases at the zonal level, on the regional level drought-related displacement decreased by -0.43% compared to the previous round. Conflict-related displacement rose in Dawa zone by +14,208 IDPs, and in Afder zone by +11,860 IDPs, despite the fact that on a regional level displacement due to conflict contracted by -2.86% compared to the last round. Overall, conflict was the main reason for displacement and displaced an estimated 511,936 IDPs (50.7%), while drought displaced 411,229 IDPs (40.8%), seasonal floods displaced 62,502 IDPs (6.2%) and flash floods displaced 23,106 IDPs (2.3%). 42% of IDPs across 158 sites mainly in Dawa, Liben and Fafan zones have been displaced between 1 and 4 years. A little over half (50.7%) of IDPs mainly in Fafan, Siti and Liben zones have been displaced over five years, out of whom 7,500 IDPs have been displaced for over 10 years. The remaining 29.9% have been displaced between 1 and 4 years and 19.4% were displaced within the last year.

Displacement Caseload and Causes of Displacement in Somali

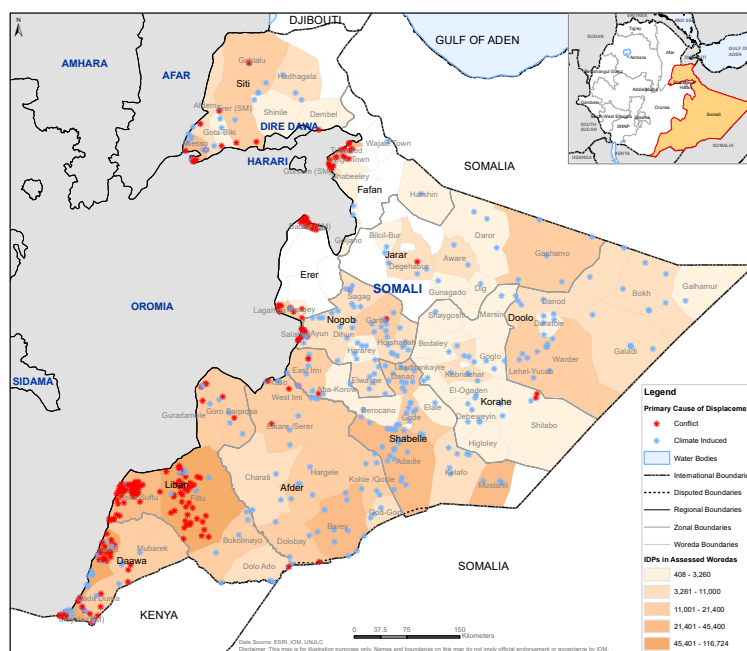
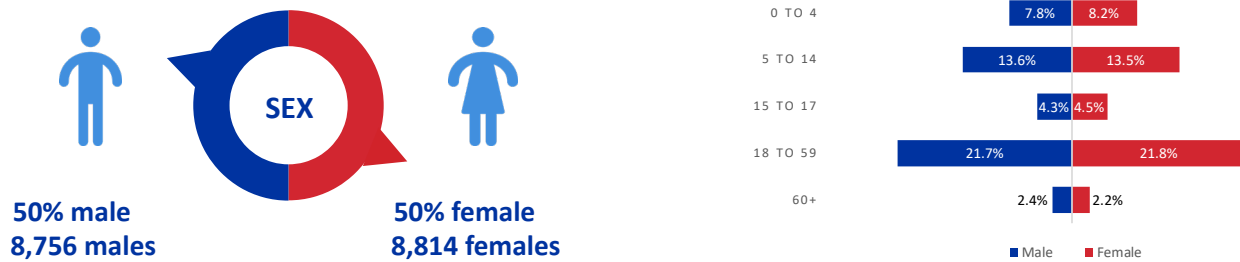


Figure 14: Displacement figures for Somali region in round 30.

South West Ethiopia Peoples



Sex and age breakdown of IDPs



3,359 households comprising 17,570 IDPs were identified in 29 sites in South West Ethiopia Peoples region. There was an increase of 974 IDPs (+5.87%) since round 29 (March — April 2022). This can be partly attributed to the coverage of four new sites in Konta zone where landslides prompted higher levels of displacement. Compared to the last round where 610 IDPs reported landslides as the main cause of displacement, in this round, 2,241 IDPs were displaced due to landslides (+2.67%). Two sites in Maji woreda in Mirab Omo zone were inaccessible due to insecurity. Overall, conflict was the primary cause of displacement for an estimated 15,329 IDPs, or 87.25% of the displaced population, followed by landslides which displaced 2,241 IDPs (12.75%). The majority of IDPs (82.6%) have been displaced between 1 and 4 years, mostly in Sheka and Bench Sheko zones, while the remaining 10.8% have been displaced for over five years. 6.6% of IDPs mainly in Konta zone were displaced within the last year.

Displacement Caseload and Causes of Displacement in South West Ethiopia Peoples

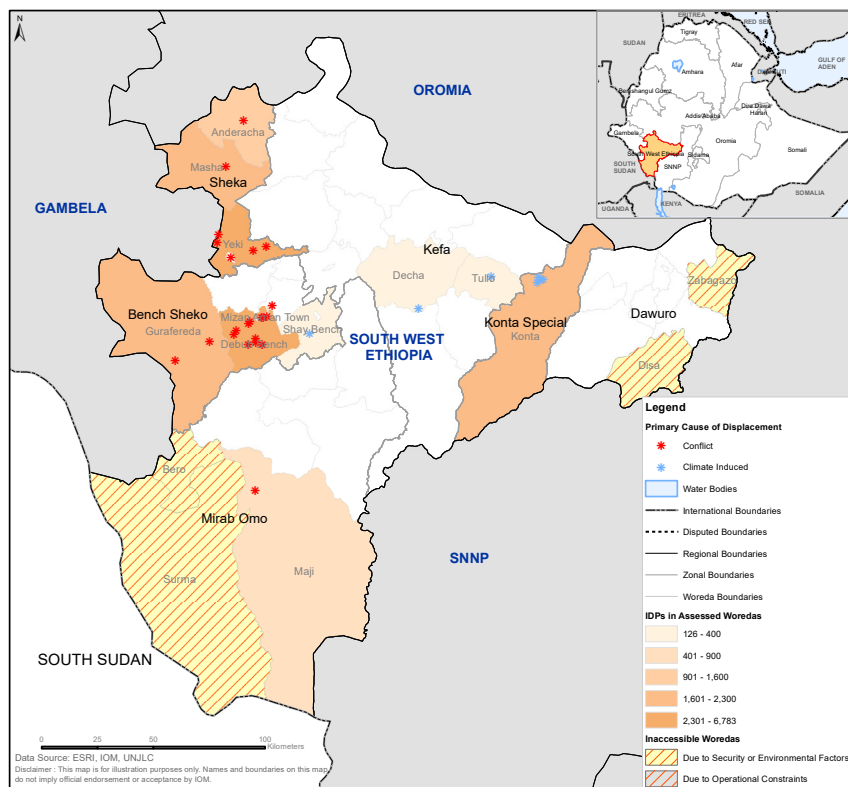


Figure 15: Displacement figures for South West Ethiopia Peoples region in round 30.

Section 2

Village Assessment Survey (VAS)

tracking returns

KEY FINDINGS — VILLAGE ASSESSMENT SURVEY



1,662 villages covered



46 inaccessible villages

Population Breakdown & Initial Causes of Displacement



1,995,808 returning IDPs*
(456,120 households)



706,096 host community
members (164,138 households)



11,027 returned migrants



+20% increase in returning IDPs
(There were 1,661,346 returning
IDPs in VAS round 12*)



48% male
984,932 males

52% female
1,065,155 females

Top 3 Reasons for Primary Displacement



1,920,632 returning IDPs (96.2%) were
initially displaced by conflict in 1,575 villages



37,524 returning IDPs (1.9%) were initially
displaced by drought in 35 villages



20,265 returning IDPs (1%) were initially
displaced by seasonal floods in 23 villages

National Return Caseload Overview

REGION	VILLAGE ASSESSMENT SURVEY (NUMBER OF RETURNING IDPS)
AFAR	84,808
AMHARA	1,632,138
BENISHANGUL GUMZ	25,450
DIRE DAWA	-
GAMBELA	19,943
HARARI	-
OROMIA	118,232
SIDAMA	9,607
SNNP	74,072
SOMALI	1,020
SOUTH WEST ETHIOPIA PEOPLES	30,538
GRAND TOTAL	1,995,808

Other reasons for initial displacement were flash floods (13,211 returning IDPs), landslides (3,439 returning IDPs) and fire (737 returning IDPs).

* The Village Assessment survey (VAS) had a higher coverage this round. The VAS was not carried out in Tigray region this round due to a persisting lack of cash and fuel in the region.

METHODOLOGY



Data collection period:
 24 May — 8 July 2022

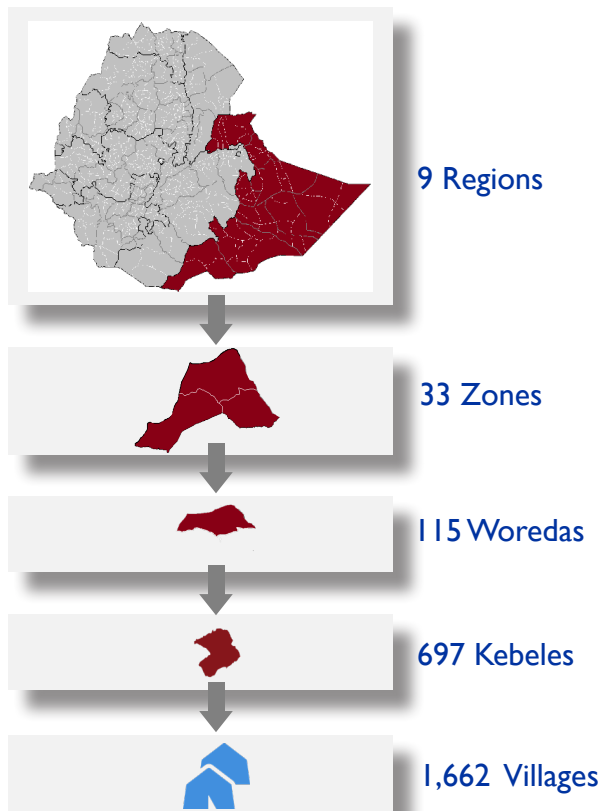
The Village Assessment Survey (VAS) was used for the first time in IOM Ethiopia in July 2019 in response to the government-led return movement in an effort to capture return trends and sectoral needs in areas reporting high return concentrations. This is the 13th round of VAS data collection.

VAS targets villages with reported returns equal to or greater than 20 returning IDP households that returned from 1 January 2021, and collects demographic data on returning IDPs, returned migrants and host community members. The purpose of VAS is to assess the capacity of villages to absorb returns through the availability of services with a focus on livelihoods and reintegration.

DTM works closely with national, zonal and woreda level officials who serve as key informants in identifying villages with high returns. At the village level, DTM collects its data through focus group discussions, key informants and through direct observation. Focus groups are made up of

7 individuals whereby each focus group must comprise 2 individuals over the age of 65 years of age, 1 individual under 18 years of age, 2 females and at least 1 government official (i.e. kebele administrator, village leader etc.). In villages where they are present, all 3 population categories, namely returning IDPs, returned migrants and host community members must also be represented in the focus group. This lower limit of 7 individuals is employed to ensure that COVID-19 prevention measures, such as social distancing, can be observed. DTM teams ensure that they are equipped with personal protective equipment (PPE) during data collection. All VAS data is collected in close collaboration with the Ethiopia Disaster Risk Management Commission (EDRMC). All data is electronically collected through survey forms designed in Kobo. The data collection period for this round of VAS was 24 May to 8 July 2022.

Coverage of this round



46 Inaccessible Villages

For round 13 of VAS, a total of 46 villages could not be accessed. 27 villages were inaccessible due to insecurity issues mainly in Konso, Amaro Special Woreda, Itang Special Woreda, Mirab Omo, East Wallaga and Arsi zones. 19 villages could not be reached due to road inaccessibility mainly in North Shewa, Agnuak, South Wollo and Bench Seko zones.

OVERVIEW OF RETURNS

National Level

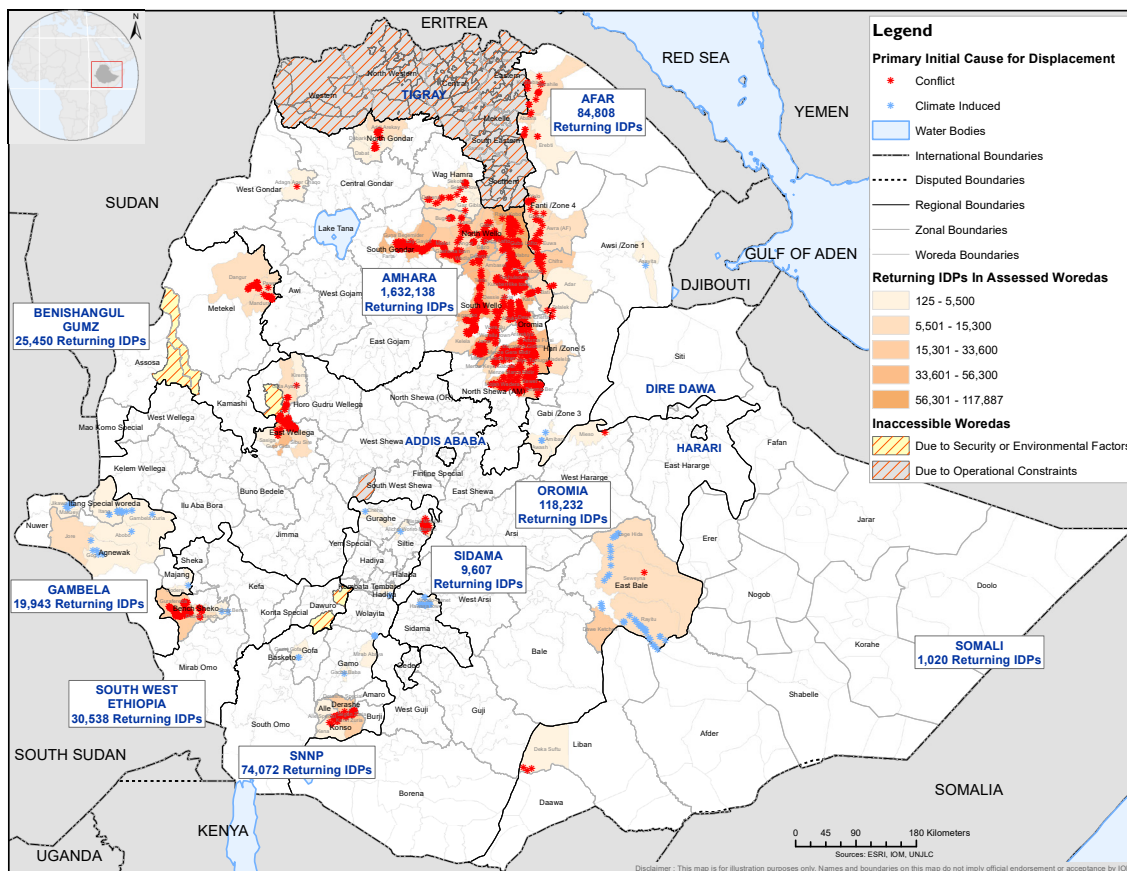


Figure 16: The returning IDP caseload in Ethiopia based on data collected from June to July 2022 from the Village Assessment Survey. Note that due to the greater IDP caseload, data collection in Amhara and Oromia began in May 2022.

According to the data collected primarily between June and July 2022*, there were an estimated 2 million returning IDPs (456,120 households) across 1,662 villages in Ethiopia. The increase in the number of returning IDPs can be attributed to the increase in coverage this round, especially in villages in Amhara region.

The largest returning IDP caseload is in Amhara region with an estimated total of 1,632,138 returning IDPs (392,679 households), as captured through the coverage of 1,223 villages. Amhara witnessed an increase of 226,181 returning IDPs (+16.1%). Conflict was the cause of initial displacement for almost all returning IDPs in Amhara region (1,631,468 returning IDPs or 99.96%).

The region hosting the second largest number of returning IDPs is Oromia region with an estimate of 118,232 returning IDPs (20,112 households) across 106 villages. Six villages could not be covered due to road inaccessibility and security issues in Arsi

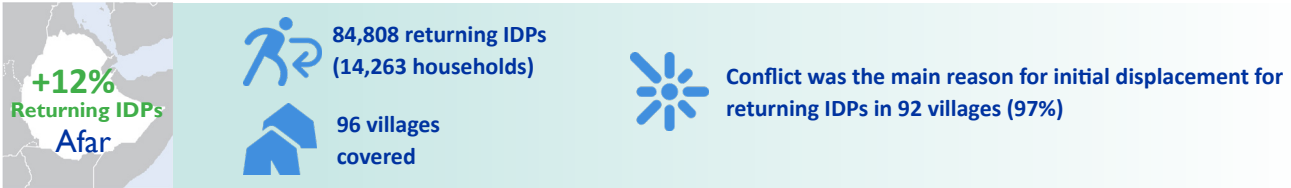
and East Wallaga zones. Conflict was the primary reason for initial displacement for returning IDPs in 71 villages (68.26%) in Oromia region, followed by drought which was the initial reason for displacement for almost a third of returning IDPs in 35 villages (31.74%).

Afar region hosts the third highest number of returning IDPs with an estimated 84,808 returning IDPs (14,263 households). There was an increase of 9,292 returning IDPs (+12.3%) since the previous round. Conflict was the main reason for initial displacement for returning IDPs in 92 villages (96.54%).

The gender breakdown for returning IDPs is 984,932 males (48%) and 1,065,155 females (52%). Conflict was the primary initial cause of displacement for 1.92 million returning IDPs (96.2%). Drought was the second most cited initial cause of displacement (37,524 or 1.9% of returning IDPs), whereas in the last round seasonal floods were the second most common reported initial cause of displacement (affecting 22,107 returning IDPs or 1.3%).

*Due to the greater IDP caseload, data collection in Amhara and Oromia regions began in May 2022.

Afar



Sex and age breakdown of returning IDPs*



14,263 households comprising 84,808 returning IDPs were identified in 96 villages in Afar region. These figures represent an increase of 9,292 returning IDPs (+12.3%) since the previous round 12 (March – April 2022). This increase is partially due to the closure of a number of IDP sites in Kilbati (Zone 2), spontaneous and government-led returns, as well as increased coverage in the zone which was inaccessible the previous round due to insecurity. In the previous round villages in Zone 2 (Kilbati) were not included, contributing to the increase in returning IDPs observed in Afar region. Despite the increase in returns to Kilbati (Zone 2), Fenti (Zone 4) continues to be the zone with the highest concentration of returning IDPs. One village in Fenti (Zone 4) was not covered due to road inaccessibility difficulties. Conflict was the main reason for initial displacement for returning IDPs in 92 villages (96.5%) followed by flash floods in four villages (3.5%).

Returnee Caseload and Causes of Initial Displacement in Afar

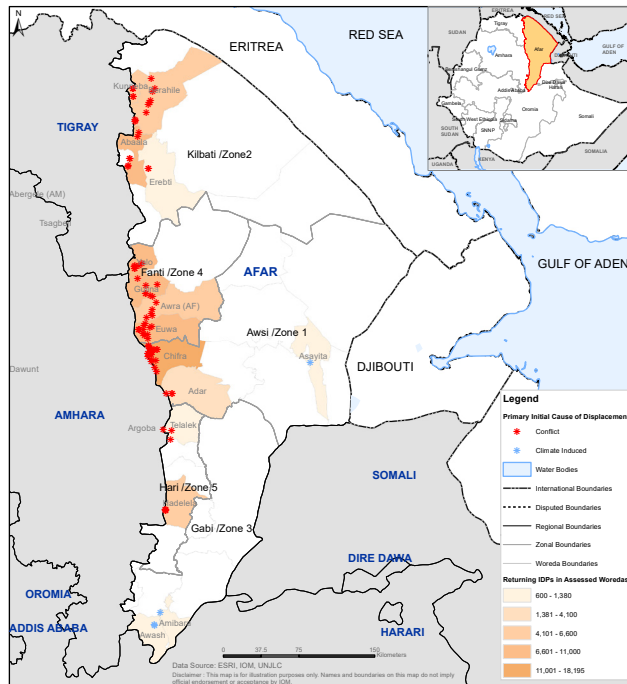


Figure 17: Returning IDP figures for Afar in VAS round 13.

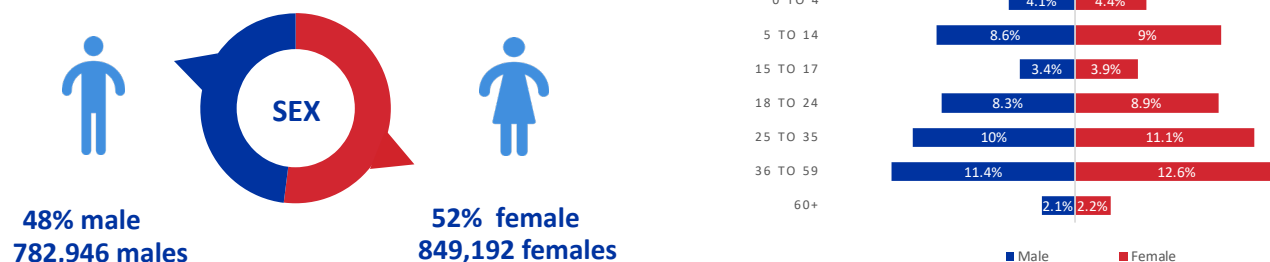
*Please note that the sex and age disaggregation for returning IDPs is an estimate based on the percentage of male and female returning IDPs and based on the percentage of returning IDPs at each age bracket. This is calculated at village level.

** This is the sixth round of Village Assessment Survey carried out in Afar region.

Amhara



Sex and age breakdown of returning IDPs*



392,679 households comprising 1,632,138 returning IDPs were identified in 1,223 villages in Amhara region. These figures represent an increase of 226,181 returning IDPs (+16.1%) since the previous round 12 (March – April 2022). Large swaths of eastern Amhara have seen generally high numbers of returning IDPs. The increase is due to the expansion of coverage in South Wollo, North Wollo and North Shewa zones where 119 new villages were assessed. South Wollo saw the highest increase of +130,608 returning IDPs (+45%) which is consistent with the increase in assessment coverage in the zone. Oromia zone reported the highest percentage increase in returning IDPs with a +147% increase, or 77,975 returning IDPs. Road inaccessibility hampered data collection in 11 villages in Amhara region, mainly in North Shewa zone. Conflict was the main cause of initial displacement for a majority of returning IDPs in 1,222 villages (100%) followed by flash foods in one village (<1%).

Returnee Caseload and Causes of Initial Displacement in Amhara

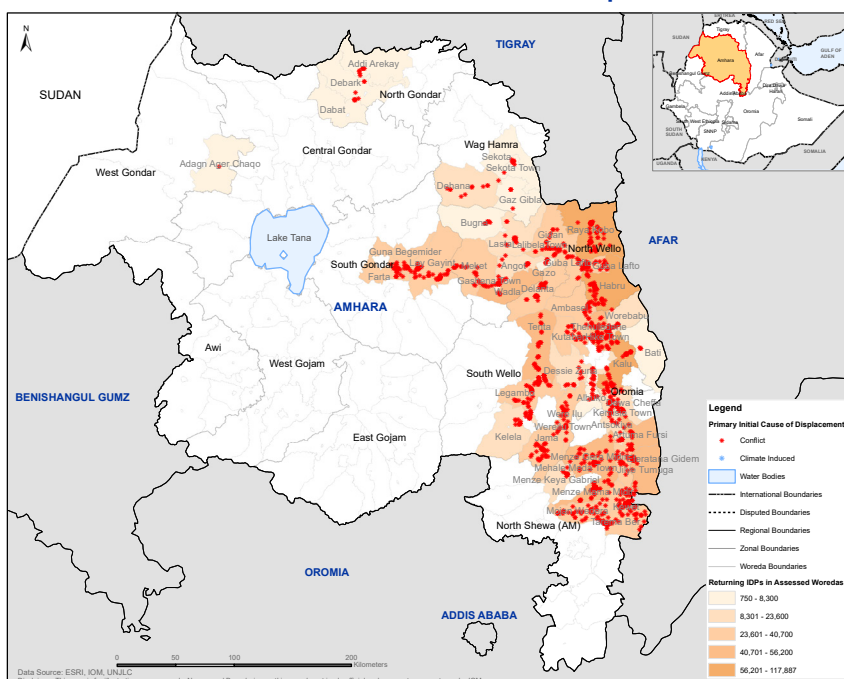


Figure 18: Returning IDP figures for Amhara in VAS round 13.

*Please note that the sex and age disaggregation for returning IDPs is an estimate based on the percentage of male and female returning IDPs and based on the percentage of returning IDPs at each age bracket. This is calculated at village level.

Benishangul Gumz



Sex and age breakdown of returning IDPs*



5,520 households comprising 25,450 returning IDPs were identified in 37 villages in Benishangul Gumz region. These figures represent an increase of 21,098 returning IDPs since round 12 (March – April 2022). This increase can be attributed to the fact that villages across Metekel zone that could not be assessed in the previous two rounds due to insecurity were covered in this round. However, villages in Kamashi zone remain uncovered. Conflict was the main reason for initial displacement for returning IDPs in all 37 villages (100%).

Returnee Caseload and Causes of Initial Displacement in Benishangul Gumz

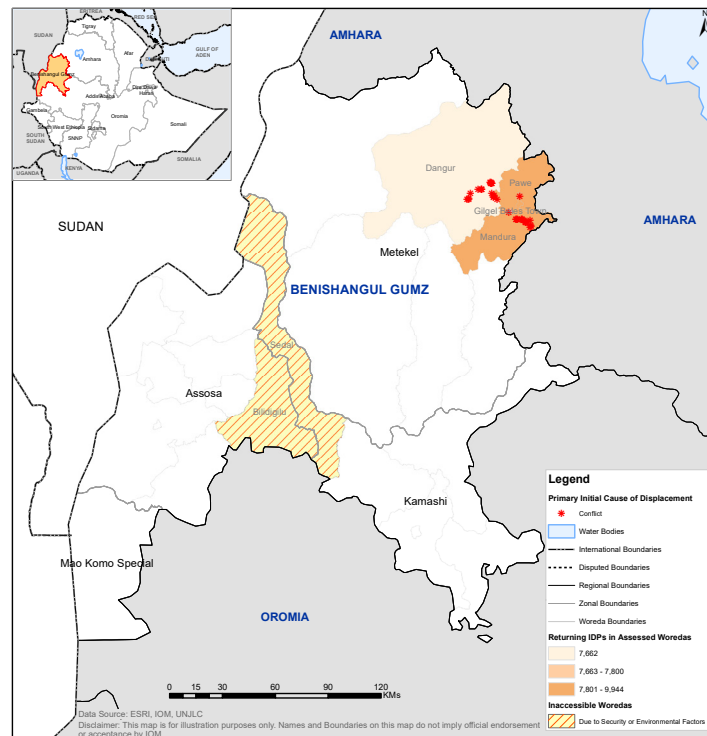


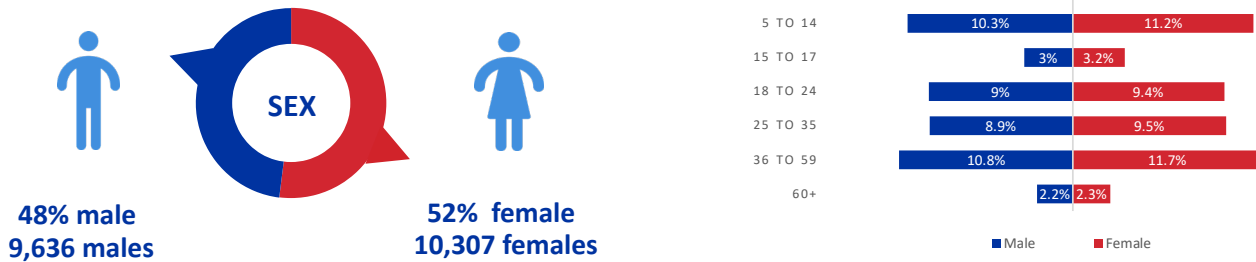
Figure 19: Returning IDP figures for Benishangul Gumz in VAS round 13.

*Please note that the sex and age disaggregation for returning IDPs is an estimate based on the percentage of male and female returning IDPs and based on the percentage of returning IDPs at each age bracket. This is calculated at village level.

Gambela



Sex and age breakdown of returning IDPs*



3,941 households comprising 19,943 returning IDPs were identified in 22 villages in Gambela region. This represents a decrease of 1,492 returning IDPs (-7%) since the previous round 12 (March — April 2022). Road inaccessibility restricted access in three villages in Agnuak zone while insecurity hampered data collection in three villages in Itang Special woreda bringing down the regional figure for returning IDPs. Seasonal floods were the main cause of initial displacement for all returning IDPs in 22 villages (100%).

Returnee Caseload and Causes of Initial Displacement in Gambela

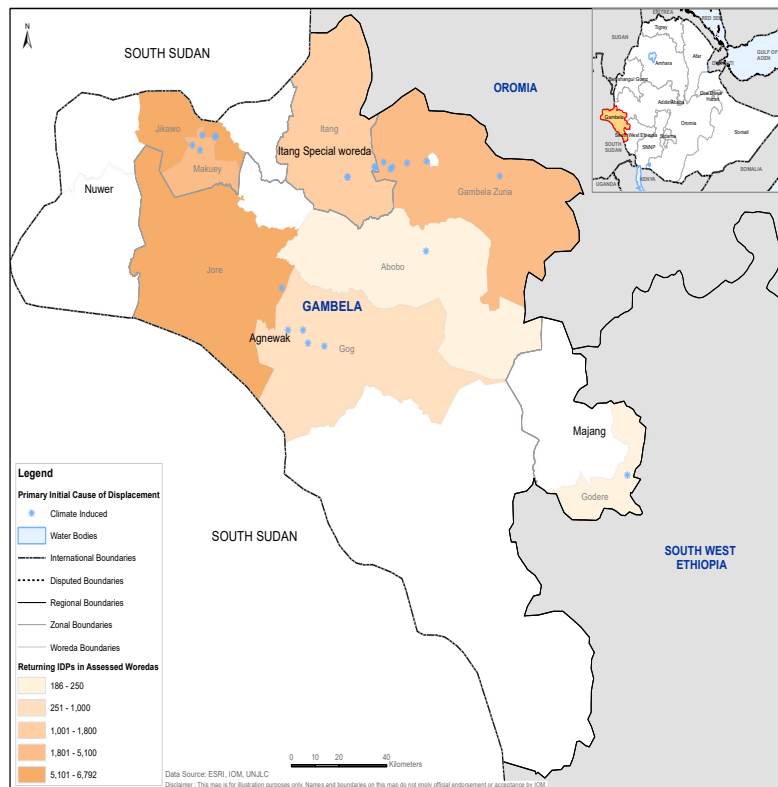


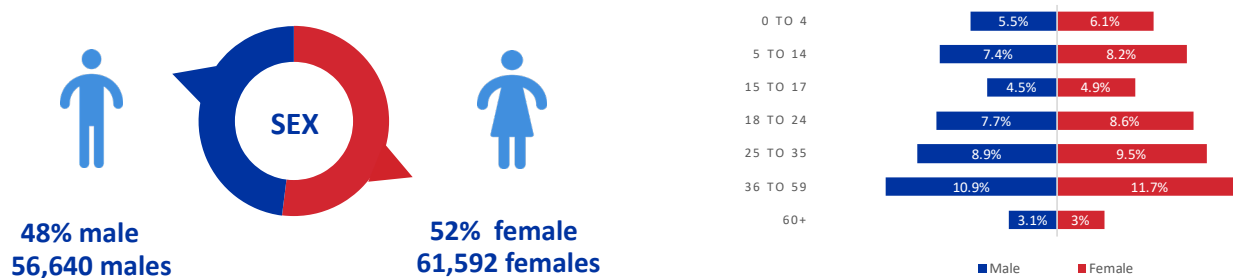
Figure 20: Returning IDP figures for Gambela in VAS round 13.

*Please note that the sex and age disaggregation for returning IDPs is an estimate based on the percentage of male and female returning IDPs and based on the percentage of returning IDPs at each age bracket. This is calculated at village level.

Oromia



Sex and age breakdown of returning IDPs*



20,122 households comprising 118,232 returning IDPs were identified in 106 villages in Oromia region. The substantial increase of +110,096 returning IDPs in Oromia region can be attributed to several interlinked factors. In East Wallaga zone, 65 new villages with returning IDPs were covered this round. East Wallaga zone accounts for two thirds (66%) of the assessed returning IDP population in Oromia region, most of whom are concentrated in Guto Gida and Sibu Sire woredas. Another reason for the increase in returning IDPs was the small amount of rain that prompted 40,024 returning IDPs to return to East Bale zone, particularly to Dawe Serer woreda. Despite the rainfall, key informants report a continued lack of access to food, water and necessities. East Bale zone was not assessed in the previous round. Overall, six villages in Arsi and East Wallaga zones were inaccessible due to insecurity. Conflict was the main cause of initial displacement for a majority of returning IDPs in 71 villages (68.3%) followed by drought in 35 villages (31.7%).

Returnee Caseload and Causes of Initial Displacement in Oromia

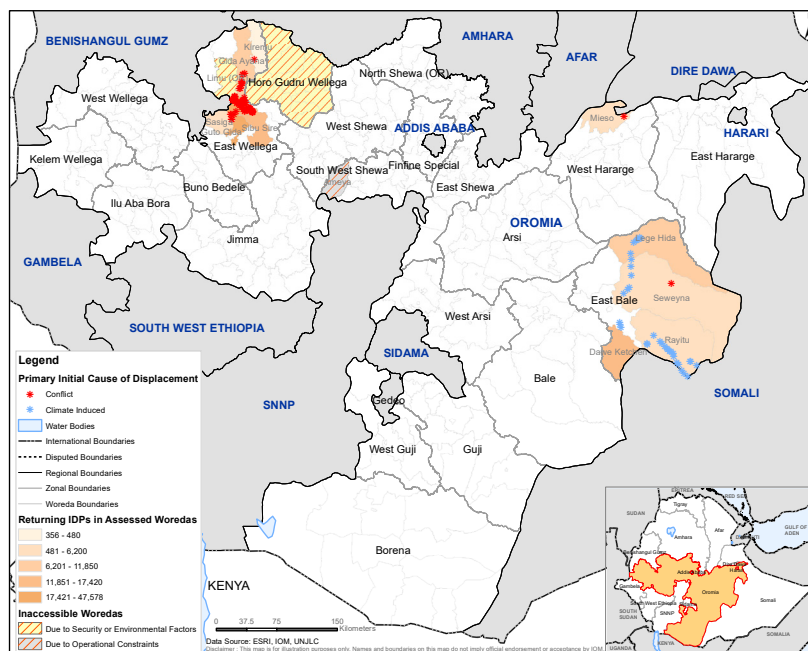
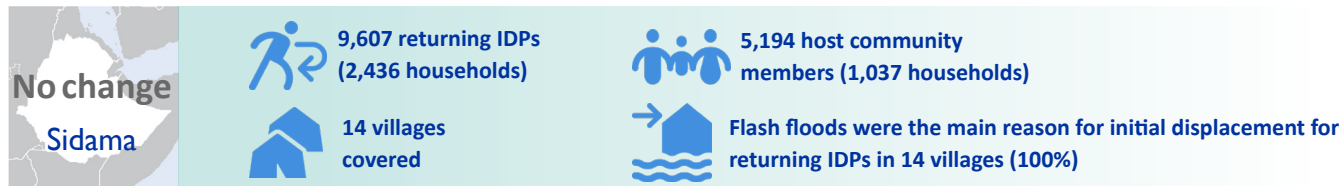


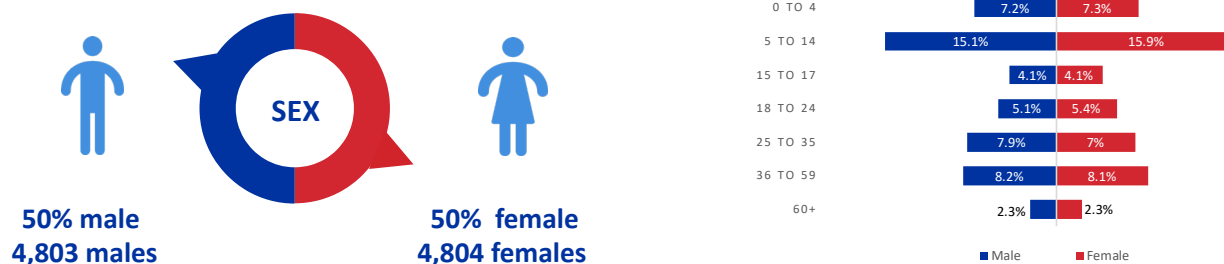
Figure 21: Returning IDP figures for Oromia region in VAS round 13.

*Please note that the sex and age disaggregation for returning IDPs is an estimate based on the percentage of male and female returning IDPs and based on the percentage of returning IDPs at each age bracket. This is calculated at village level.

Sidama



Sex and age breakdown of returning IDPs*



2,436 households comprising 9,607 returning IDPs were identified in 14 villages in Sidama region. There was no change in the number of returning IDPs assessed in the region between the previous and current round of data collection. Returning IDPs in Sidama region continue to be fairly equally split between Hwassa Ketema Astedader zone (56%) and Zone 1 (44%). Flash floods were the main initial reason for displacement for all returning IDPs in 14 villages (100%).

Returnee Caseload and Causes of Initial Displacement in Sidama

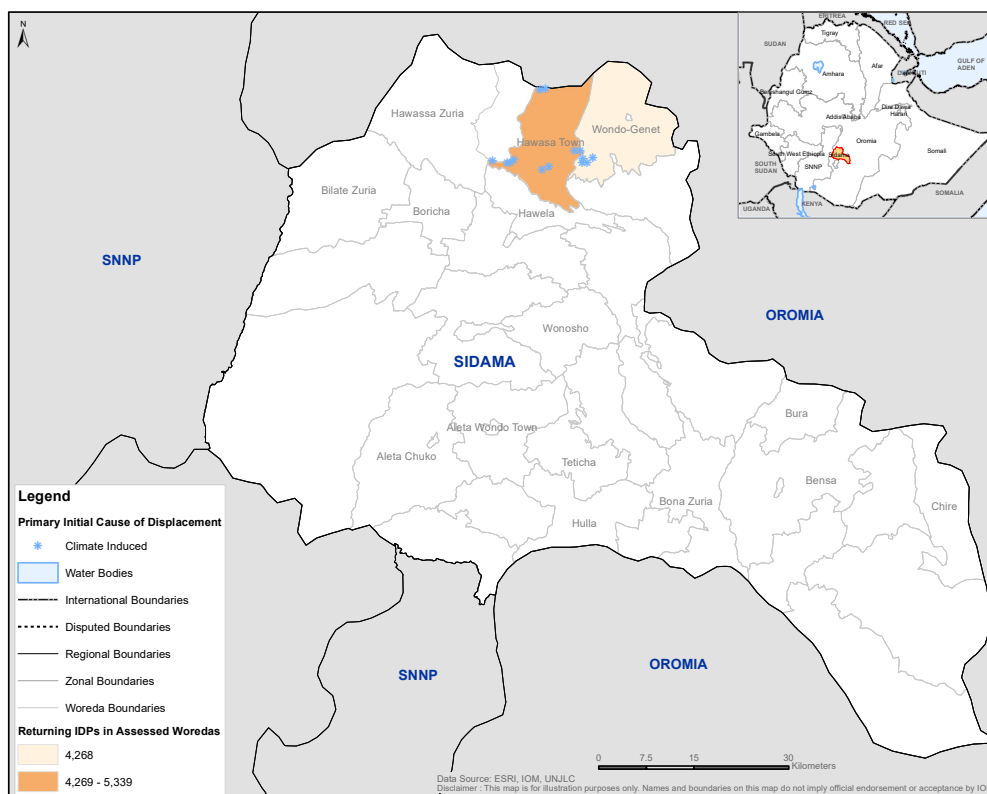


Figure 22: Returning IDP figures for Sidama region in VAS round 13.

*Please note that the sex and age disaggregation for returning IDPs is an estimate based on the percentage of male and female returning IDPs and based on the percentage of returning IDPs at each age bracket. This is calculated at village level.

SNNP



Sex and age breakdown of returning IDPs*



11,457 households comprising 74,072 returning IDPs were identified in 73 villages in SNNP region. There was a decrease of 31,013 returning IDPs, which can be attributed to the fact that 15 villages in Konso zone were inaccessible due to insecurity. Despite this, Konso zone continued to have the highest concentration of returning IDPs in the region, with 45,336 returning IDPs (61%), most of whom were assessed in Segen Zuria woreda. This indicates that the number of returning IDPs in the area is likely higher. Insecurity prevented data collection in 17 villages, mainly in Konso zone. Conflict was the primary reason for initial displacement for returning IDPs in 64 villages (96.8%), followed by landslides in six villages (1.8%), fire in two villages (1%) and seasonal flooding in one village (<1%).

Returnee Caseload and Causes of Initial Displacement in SNNP

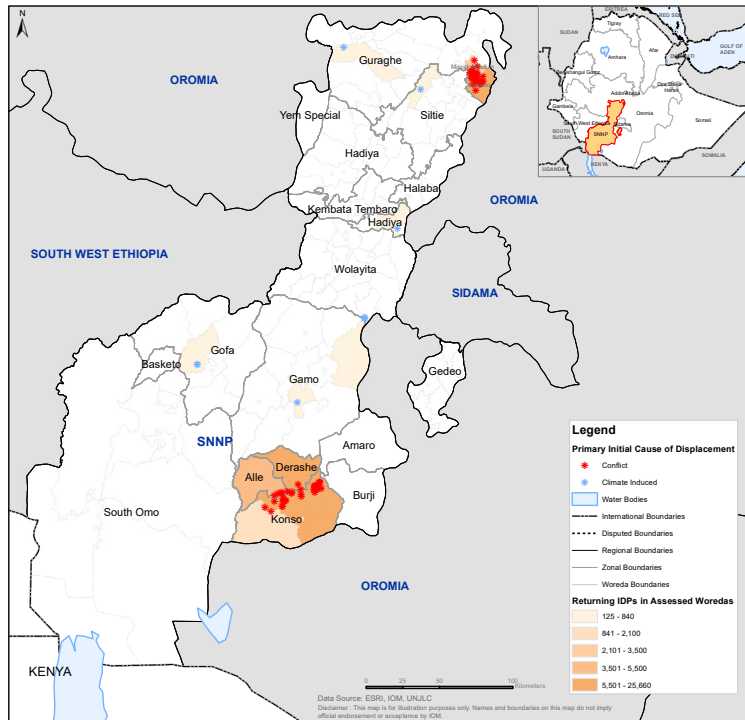


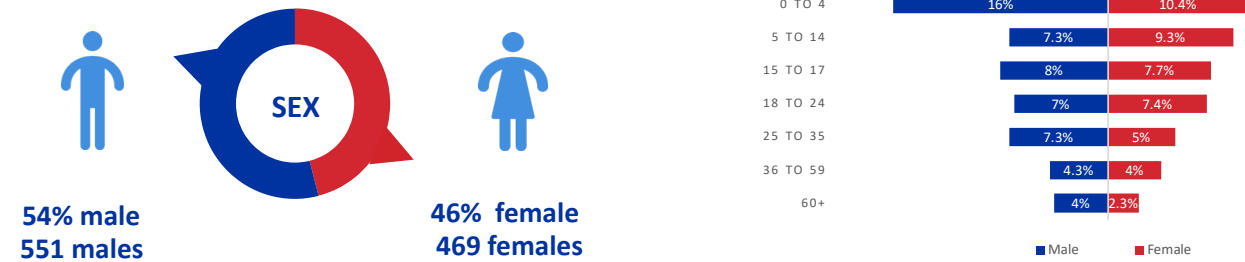
Figure 23: Returning IDP figures for SNNP region in VAS round 13.

*Please note that the sex and age disaggregation for returning IDPs is an estimate based on the percentage of male and female returning IDPs and based on the percentage of returning IDPs at each age bracket. This is calculated at village level.

Somali



Sex and age breakdown of returning IDPs*



180 households comprising 1,020 returning IDPs were identified in 3 villages in Somali region. There was a decrease of 258 returning IDPs (-20.2%) since the previous round 12 (March — April 2022) in Liben zone. Conflict was the main initial reason for displacement for returning IDPs in all three villages (100%).

Returnee Caseload and Causes of Initial Displacement in Somali

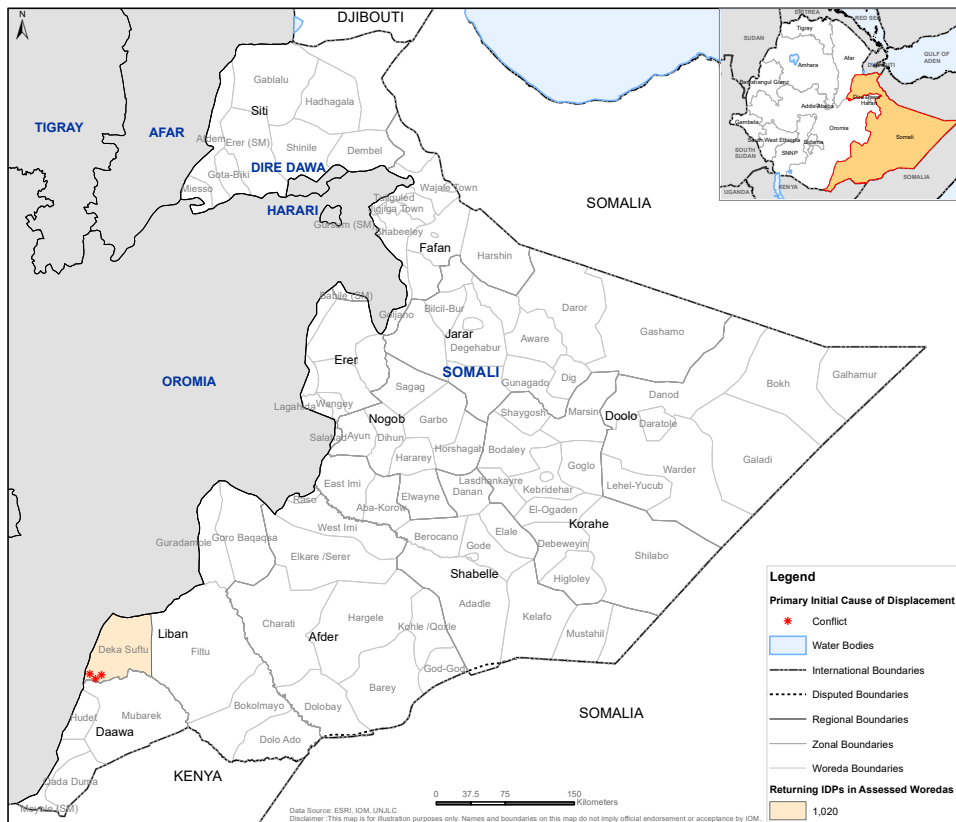


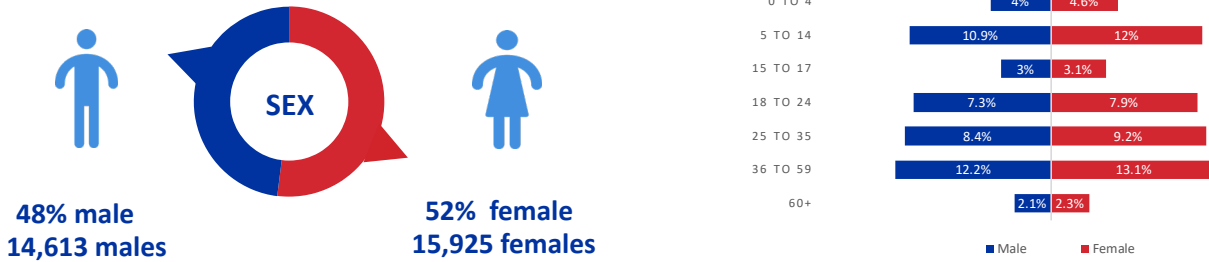
Figure 24: Returning IDP figures for Somali region in VAS round 13.

*Please note that the sex and age disaggregation for returning IDPs is an estimate based on the percentage of male and female returning IDPs and based on the percentage of returning IDPs at each age bracket. This is calculated at village level.

South West Ethiopia Peoples



Sex and age breakdown of returning IDPs*



5,532 households comprising 30,538 returning IDPs were identified in 88 villages in South West Ethiopia Peoples region. There was an increase of 558 returning IDPs (+2%) since the previous round 12 (March — April 2022). The increase is due to the coverage of villages in Guraferda woreda in Bench Sheko zone which were previously inaccessible due to road inaccessibility. Two villages in Bench Sheko zone and one village in Keffa zone were uncovered due to inaccessible road conditions. Conflict was the main reason for initial displacement for returning IDPs in 86 villages (93%), while landslides were the main reason for initial displacement for returning IDPs in two villages (7%).

Returnee Caseload and Causes of Initial Displacement in South West Ethiopia Peoples

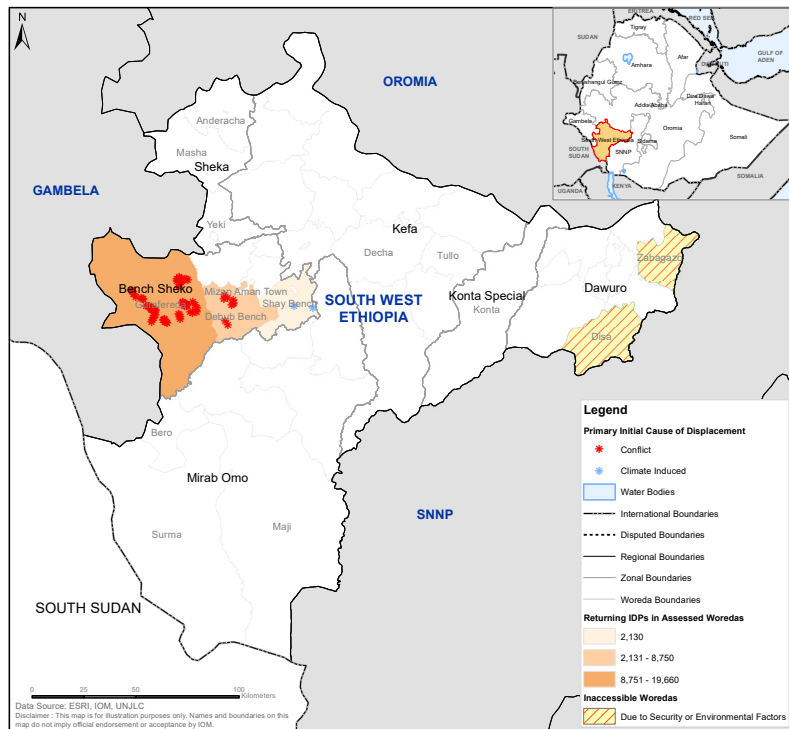


Figure 25: Returning IDP figures for South West Ethiopia Peoples region in VAS round 13.

*Please note that the sex and age disaggregation for returning IDPs is an estimate based on the percentage of male and female returning IDPs and based on the percentage of returning IDPs at each age bracket. This is calculated at village level.

ANNEX A

SUMMARY TABLE OF DISPLACEMENT

Site Assessment

Displacement Tracking Matrix (DTM) Site Assessment Round 30 (May 24 - July 9 2022) - National Summary Table of Displacement



Round	Region	Zone	Woreda	Cause	Before 2021		During 2021		In 2022		Total HH	Total Individuals	Total Sites			
					HH	Individuals	Sites	HH	Individuals	Sites				HH	Individuals	Sites
Afar		Awsil (Zone 1)	Amambo	Flash Flood	1,012	6,077	5	-	-	-	1,012	6,077	5			
Afar		Awsil (Zone 1)	Aysaita	Flash Flood	245	1,470	2	155	930	2	400	2,400	4			
Afar		Awsil (Zone 1)	Dubi	Flash Flood	486	2,916	1	524	3,144	2	1,010	6,060	3			
Afar		Awsil (Zone 1)	Eldar	Drought	166	996	2	-	-	-	166	996	2			
Afar		Awsil (Zone 1)	Kurri	Drought	40	240	1	-	-	-	40	240	1			
Afar		Awsil (Zone 1)	Adaa'	Conflict	-	-	-	125	750	2	125	750	2			
Afar		Awsil (Zone 1)	Gerani	Conflict	1,149	6,834	5	-	-	-	1,149	6,834	5			
Afar		Awsil (Zone 1)	Gerani	Drought	-	-	-	-	240	1	40	240	1			
Afar		Awsil (Zone 1)	Gerani	Flash Flood	413	2,065	2	-	-	-	413	2,065	2			
Afar		Awsil (Zone 1)	Samara Logya City Administration	Conflict	-	-	-	2,877	7,909	2	2,877	7,909	2			
Afar		Awsil (Zone 1)	Dubi City Administration	Conflict	-	-	-	-	65	325	1	65	325	1		
Afar		Awsil (Zone 4)	Gulna	Seasonal Flood	70	350	1	-	-	-	70	350	1			
Afar		Fenti (Zone 4)	Teru	Drought	37	185	1	-	-	-	37	185	1			
Afar		Fenti (Zone 4)	Eva	Drought	69	414	1	-	-	-	69	414	1			
Afar		Fenti (Zone 4)	Eva	Other	148	888	1	-	-	-	148	888	1			
Afar		Gabi (Zone 3)	Ambara	Conflict	645	3,870	2	-	-	150	795	4,770	3			
Afar		Gabi (Zone 3)	Ambara	Flash Flood	334	2,004	1	-	-	-	334	2,004	1			
Afar		Gabi (Zone 3)	Awash Female	Flash Flood	-	-	-	290	1,740	2	290	1,740	2			
Afar		Gabi (Zone 3)	Dulcha	Flash Flood	372	2,232	2	-	-	-	372	2,232	2			
Afar		Gabi (Zone 3)	Gallu	Flash Flood	50	300	1	-	-	-	50	300	1			
Afar		Gabi (Zone 3)	Gewene	Flash Flood	810	4,860	2	-	-	-	810	4,860	2			
Afar		Gabi (Zone 3)	Hannuka	Conflict	225	1,350	1	345	2,070	3	570	3,420	4			
Afar		Gabi (Zone 3)	Hannuka	Flash Flood	450	2,700	1	-	-	-	450	2,700	1			
Afar		Gabi (Zone 3)	Awash City Administration	Conflict	-	-	-	211	1,266	1	211	1,266	1			
Afar		Hari (Zone 5)	Dallagi	Drought	30	180	1	-	-	-	30	180	1			
Afar		Hari (Zone 5)	Dewe	Drought	-	-	-	542	2,710	2	542	2,710	2			
Afar		Hari (Zone 5)	Haddelela	Conflict	301	1,806	1	-	-	-	301	1,806	1			
Afar		Hari (Zone 5)	Simurobi Gede'ab	Conflict	54	324	1	-	-	-	54	324	1			
Afar		Hari (Zone 5)	Telalaki	Other	40	220	1	-	-	-	40	220	1			
Afar		Kibati (Zone 2)	Afdera	Drought	149	894	2	-	-	-	149	894	2			
Afar		Kibati (Zone 2)	Bershile	Drought	57	342	1	-	-	-	57	342	1			
Afar		Kibati (Zone 2)	Bidu	Other	150	870	1	-	-	-	150	870	1			
Afar		Kibati (Zone 2)	Dalu	Flash Flood	198	1,097	1	-	-	70	268	1,517	2			
Afar		Kibati (Zone 2)	Fredbi	Conflict	-	-	-	-	200	1,200	1	200	1,200	1		
Afar		Kibati (Zone 2)	Fredbi	Drought	85	485	2	-	-	-	85	485	2			
Afar		Kibati (Zone 2)	Koneba	Conflict	-	-	-	-	200	1,200	1	200	1,200	1		
Afar		Kibati (Zone 2)	Megale	Conflict	-	-	-	-	700	3,600	1	700	3,600	1		
Afar		Kibati (Zone 2)	Ab Ala	Conflict	-	-	-	-	102	572	1	102	572	1		
Afar Total					7,785	45,969	43	2,192	12,610	14	4,404	16,366	10	14,381	74,945	67
Amhara		Awil/Agew	Guaguusa Shikludad	Conflict	192	674	3	-	-	-	192	674	3			
Amhara		Awil/Agew	Dangila	Conflict	394	1,540	7	-	-	-	394	1,540	7			
Amhara		Awil/Agew	Fagga Lakoma	Conflict	834	3,572	13	204	929	3	1,038	4,501	16			
Amhara		Awil/Agew	Jawi	Conflict	2,799	10,085	11	347	1,599	1	3,146	11,684	12			
Amhara		Awil/Agew	Zigem	Conflict	3,555	17,705	10	137	898	2	3,692	18,603	12			
Amhara		Awil/Agew	Ankasha	Conflict	95	281	3	-	-	-	95	281	3			
Amhara		Awil/Agew	Ayehu Guaguusa	Conflict	772	3,059	4	-	-	-	772	3,059	4			
Amhara		Awil/Agew	Banja	Conflict	547	2,466	8	-	-	-	547	2,466	8			
Amhara		Awil/Agew	Injibara City Administration	Conflict	142	467	3	-	-	-	142	467	3			
Amhara		Awil/Agew	Injibara City Administration	Other	110	393	1	-	-	-	110	393	1			
Amhara		Awil/Agew	Dangila City Administration	Conflict	259	1,002	5	-	-	-	259	1,002	5			
Amhara		Bahir Dar	Belay Zellele Sub City	Conflict	523	1,496	3	-	-	-	523	1,496	3			
Amhara		Bahir Dar	Asse Tewodros Sub City	Conflict	798	3,850	4	-	-	-	798	3,850	4			
Amhara		Bahir Dar	Dagmawi Wemlik Sub City	Conflict	72	373	2	142	557	2	214	930	4			
Amhara		Bahir Dar	Tana Sub City	Conflict	183	633	1	-	-	-	183	633	1			
Amhara		Central Gondar	Gonder Zuria	Conflict	315	1,007	2	-	-	25	340	1,134	3			
Amhara		Central Gondar	Aykel City Administration	Conflict	1,000	5,000	2	-	-	-	1,000	5,000	2			
Amhara		Central Gondar	East Belesa	Conflict	420	1,965	6	-	-	-	420	1,965	6			
Amhara		Central Gondar	Lay Arnaacheho	Conflict	-	-	-	258	1,460	1	258	1,460	1			
Amhara		Central Gondar	Chilga 1	Conflict	249	1,023	1	47	233	1	178	474	2			
Amhara		Central Gondar	Chilga 2	Conflict	-	-	-	-	360	2,500	1	360	2,500	1		
Amhara		Central Gondar	Gonder City Administration	Conflict	1,270	1,930	1	-	-	-	1,270	1,930	1			

Round	Region	Zone	Woreda	Cause	Before 2021			During 2021			In 2022			Total Sites
					HH	Individuals	Sites	HH	Individuals	Sites	HH	Individuals	Sites	
Site Assessment Round 30 (May 24 - July 9 2022)	Amhara	Central Gondar	West Belesa	Conflict	149	543	1	-	-	-	149	543	1	
	Amhara	Central Gondar	Wegera	Conflict	192	724	2	-	-	-	192	724	2	
	Amhara	East Gojjam	Baso Liben	Conflict	956	3,336	6	104	427	1	1,060	3,763	7	
	Amhara	East Gojjam	Gondha Siso Enese	Conflict	522	1,961	5	56	307	1	38	152	1	
	Amhara	East Gojjam	Debre Marios	Conflict	565	2,056	7	-	-	-	40	160	1	
	Amhara	East Gojjam	Enbise Sar Midir	Conflict	118	471	1	86	339	1	-	204	810	2
	Amhara	East Gojjam	Guzamm	Conflict	67	217	2	-	-	-	-	67	217	2
	Amhara	East Gojjam	Guzamm	Landslide	130	562	2	-	-	-	-	130	562	2
	Amhara	East Gojjam	Awabel	Conflict	98	300	2	-	-	-	-	98	300	2
	Amhara	East Gojjam	Merto Lemariam City Administration	Conflict	234	922	5	-	-	-	-	234	922	5
	Amhara	East Gojjam	Michalek	Conflict	662	2,368	6	36	136	1	698	2,504	7	
	Amhara	East Gojjam	Annedd	Conflict	69	244	2	20	74	1	89	318	3	
	Amhara	East Gojjam	Bibugn	Conflict	640	2,409	4	-	-	-	50	172	1	
	Amhara	East Gojjam	Debre Elias	Conflict	162	517	3	-	-	-	-	162	517	3
	Amhara	East Gojjam	Enarj Enawga	Conflict	198	625	4	-	-	-	-	198	625	4
	Amhara	East Gojjam	Hulet Ej Enese	Conflict	292	1,127	7	-	-	-	-	292	1,127	7
	Amhara	East Gojjam	Sede	Conflict	339	956	3	-	-	-	-	339	956	3
	Amhara	North Gondar	Addi Arekay	Conflict	-	-	-	-	-	-	4,960	13,500	2	
	Amhara	North Gondar	Debak	Conflict	121	347	3	1,536	3,480	2	-	4,960	13,500	2
	Amhara	North Gondar	Dabat	Conflict	1,519	4,919	8	169	659	3	-	1,688	5,578	11
	Amhara	North Gondar	Dabat City Administration	Conflict	678	2,177	4	-	-	-	-	678	2,177	4
	Amhara	North Gondar	Debak City Administration	Conflict	-	-	-	12,640	44,272	3	-	12,640	44,272	3
	Amhara	North Gondar	Janamora	Conflict	276	502	6	-	-	-	-	276	502	6
	Amhara	North Gondar	Beyeda	Conflict	212	444	3	-	-	-	-	212	444	3
	Amhara	North Shewa (R3)	Minjar Shenkora	Conflict	369	1,445	4	-	-	-	-	369	1,445	4
	Amhara	North Shewa (R3)	Menz Keya Gabriel	Conflict	471	2,303	3	103	522	2	-	574	2,825	5
	Amhara	North Shewa (R3)	Debrebrihan City Administration	Conflict	441	1,896	6	5,191	13,642	4	1,917	7,773	3	
	Amhara	North Shewa (R3)	Menz Gera Midir	Conflict	118	373	2	60	224	2	-	178	597	4
	Amhara	North Shewa (R3)	Ensarro	Conflict	363	1,087	3	91	194	1	-	454	1,281	4
	Amhara	North Shewa (R3)	Moretha Jiru	Conflict	-	-	-	-	-	-	46	138	1	
	Amhara	North Shewa (R3)	Ataye City Administration	Conflict	-	-	-	252	1,033	1	64	154	1	
	Amhara	North Shewa (R3)	Eferatana Gidem	Conflict	-	-	-	256	1,206	2	90	346	1,646	3
	Amhara	North Shewa (R3)	Kewet	Conflict	-	-	-	-	-	-	41	152	1	
	Amhara	North Shewa (R3)	Shoa Robit City Administration	Conflict	-	-	-	91	163	1	991	4,354	3	
	Amhara	North Shewa (R3)	Antsokiya	Conflict	-	-	-	99	395	2	30	140	1	
	Amhara	North Shewa (R3)	Menz Mama Midir	Landslide	41	150	1	-	-	-	-	41	150	1
	Amhara	North Shewa (R3)	Mida Weisemo	Conflict	-	-	-	-	-	-	89	356	2	
	Amhara	North Shewa (R3)	Aleni Ketema City Administration	Conflict	200	780	3	-	-	-	-	200	780	3
	Amhara	North Shewa (R3)	Mojan Wedera	Conflict	-	-	-	-	-	-	182	853	2	
	Amhara	North Wollo	Habru	Conflict	198	633	5	46	204	1	10,162	28,712	1	
	Amhara	North Wollo	Wadla	Conflict	66	196	1	-	-	-	-	66	196	1
	Amhara	North Wollo	Gazo	Conflict	79	271	1	-	-	-	79	271	1	
	Amhara	North Wollo	Guba Lafto	Conflict	56	184	2	-	-	-	-	56	184	2
	Amhara	North Wollo	Meresa City Administration	Conflict	80	258	1	31	128	1	-	111	386	2
	Amhara	North Wollo	Weldiya City Administration	Conflict	249	764	5	59	139	1	-	308	903	6
	Amhara	North Wollo	Lalibela City Administration	Conflict	457	1,635	5	-	-	-	-	457	1,635	5
	Amhara	North Wollo	Lasta	Conflict	597	1,766	8	176	532	2	-	773	2,298	10
Amhara	North Wollo	Meket	Conflict	173	592	3	-	-	-	-	173	592	3	
Amhara	North Wollo	Filakt City Administration	Conflict	325	1,080	2	-	-	-	-	325	1,080	2	
Amhara	North Wollo	Gashena City Administration	Conflict	392	1,263	1	-	-	-	-	392	1,263	1	
Amhara	North Wollo	Gidam	Conflict	291	650	2	-	-	-	-	291	650	2	
Amhara	North Wollo	Hara City Administration	Conflict	206	592	5	-	-	-	20	69	1		
Amhara	North Wollo	Kobo City Administration	Conflict	328	1,178	4	-	-	-	-	328	1,178	4	
Amhara	North Wollo	Raya Kobo	Conflict	500	1,660	8	-	-	-	-	500	1,660	8	
Amhara	North Wollo	Bugna	Conflict	89	200	2	-	-	-	92	318	1		
Amhara	Oromia	Bati	Conflict	-	-	-	-	-	-	42	194	1		
Amhara	Oromia	Artuma Fursi	Conflict	-	-	-	502	2,369	5	-	502	2,369	5	
Amhara	Oromia	Kemisie City Administration	Conflict	-	-	-	52	260	2	-	52	260	2	
Amhara	South Gondar	Anda Bet	Conflict	736	2,481	4	-	-	-	-	736	2,481	4	
Amhara	South Gondar	Debre Tabor City Administration	Conflict	1,088	4,297	6	125	431	1	-	1,213	4,728	7	

Round	Region	Zone	Woreda	Cause	Before 2021			During 2021			In 2022			Total HH	Total Individuals	Total Sites
					HH	Individuals	Sites	HH	Individuals	Sites	HH	Individuals	Sites			
	Amhara	South Gondar	Estie	Conflict	872	4,040	7	-	-	-	-	-	872	4,040	7	
	Amhara	South Gondar	Farta	Conflict	286	1,070	2	-	-	-	-	-	286	1,070	2	
	Amhara	South Gondar	Addis Zamen City Administration	Conflict	352	579	4	-	-	-	-	-	352	579	4	
	Amhara	South Gondar	Dera	Conflict	125	601	3	-	-	-	-	-	125	601	3	
	Amhara	South Gondar	Guna Begemdir	Conflict	231	986	1	-	-	-	-	-	231	986	1	
	Amhara	South Gondar	Nefas Mewicha city Administration	Conflict	204	779	2	-	-	-	-	-	204	779	2	
	Amhara	South Gondar	Sede Mijja	Conflict	1,299	5,899	2	-	-	-	-	-	1,299	5,899	2	
	Amhara	South Gondar	Woreta City Administration	Conflict	516	1,851	3	-	-	-	141	1	559	1,992	4	
	Amhara	South Gondar	Ebenat	Conflict	193	854	2	130	645	1	-	-	323	1,499	3	
	Amhara	South Gondar	Mekane Yesus City Administration	Conflict	1,523	6,353	3	-	-	-	-	-	1,523	6,353	3	
	Amhara	South Gondar	Simada	Conflict	3,267	8	8	-	-	-	-	-	695	3,267	8	
	Amhara	South Gondar	Hamusit City Administration	Conflict	85	284	1	-	-	-	-	-	85	284	1	
	Amhara	South Gondar	Lay Gayint	Conflict	77	278	2	-	-	-	-	-	77	278	2	
	Amhara	South Gondar	Tach Gayint	Conflict	402	1,835	2	-	-	-	-	-	402	1,835	2	
	Amhara	South Gondar	Wegeda City Administration	Conflict	686	3,431	2	-	-	-	-	-	686	3,431	2	
	Amhara	South Wollo	Kalu	Conflict	305	1,368	2	460	1,698	1	-	-	765	3,066	3	
	Amhara	South Wollo	Borena	Conflict	42	210	1	51	142	1	-	-	93	352	2	
	Amhara	South Wollo	Thehulederie	Conflict	224	724	2	410	1,353	1	-	-	634	2,077	3	
	Amhara	South Wollo	Ambasel	Conflict	114	348	1	-	-	-	-	-	114	348	1	
	Amhara	South Wollo	Jama	Conflict	26	103	1	21	80	1	-	-	47	183	2	
	Amhara	South Wollo	Were ilu city Administration	Conflict	53	200	1	-	-	-	-	-	53	200	1	
	Amhara	South Wollo	Kelala	Conflict	182	782	3	-	-	-	-	-	182	782	3	
	Amhara	South Wollo	Kutaber	Conflict	-	-	-	175	620	1	-	-	175	620	1	
	Amhara	South Wollo	Leghida	Conflict	-	-	-	41	129	1	-	-	41	129	1	
	Amhara	South Wollo	Mekane Selam City Administration	Conflict	86	326	2	272	1,226	5	-	-	358	1,552	7	
	Amhara	South Wollo	Tenta	Conflict	-	-	-	190	743	5	20	69	210	812	6	
	Amhara	South Wollo	Akesta City Administration	Conflict	-	-	-	61	219	1	-	-	61	219	1	
	Amhara	South Wollo	Desse Zuria	Conflict	-	-	-	-	-	-	100	321	100	321	1	
	Amhara	South Wollo	Lagambo	Conflict	-	-	-	28	107	1	-	-	28	107	1	
	Amhara	Wag Himra	Dehana	Conflict	241	675	3	-	-	-	53	124	294	799	4	
	Amhara	Wag Himra	Gaz Gibla	Conflict	323	994	3	-	-	-	-	-	323	994	3	
	Amhara	Wag Himra	Wag Himra	Conflict	96	261	1	-	-	-	691	4,168	787	4,429	2	
	Amhara	Wag Himra	Ziquala	Conflict	4,096	18,056	2	-	-	-	136	548	4,232	18,604	4	
	Amhara	West Gojam	Sekota City Administration	Conflict	9,200	41,984	2	-	-	-	1,532	5,165	10,732	47,149	4	
	Amhara	West Gojam	Sekela	Conflict	4,492	19,542	13	40	190	1	-	-	4,532	19,732	14	
	Amhara	West Gojam	Dega Damot	Conflict	10,638	48,575	19	568	2,297	2	-	-	11,206	50,872	21	
	Amhara	West Gojam	Quarit	Conflict	7,677	41,639	19	439	2,429	3	-	-	8,116	44,068	22	
	Amhara	West Gojam	Jabi Tehnan	Conflict	3,588	17,271	16	102	504	1	-	-	3,690	17,775	17	
	Amhara	West Gojam	Wemberna	Conflict	214	1,061	3	42	219	1	-	-	256	1,280	4	
	Amhara	West Gojam	Finote Selam City Administration	Conflict	495	2,978	5	-	-	-	-	-	495	2,978	5	
	Amhara	West Gojam	Adet	Conflict	825	3,838	5	-	-	-	-	-	825	3,838	5	
	Amhara	West Gojam	Bure	Conflict	1,133	4,570	5	70	325	2	-	-	1,203	4,895	7	
	Amhara	West Gojam	Debab Achefer	Conflict	252	891	2	-	-	-	-	-	252	891	2	
	Amhara	West Gojam	Dembecha	Conflict	1,774	8,546	9	-	-	-	-	-	1,774	8,546	9	
	Amhara	West Gojam	Yilmana Densa	Conflict	583	2,681	5	-	-	-	-	-	583	2,681	5	
	Amhara	West Gojam	Bure City Administration	Conflict	1,868	12,860	7	-	-	-	-	-	1,868	12,860	7	
	Amhara	West Gojam	Debab Mecha	Conflict	1,472	7,159	5	-	-	-	-	-	1,472	7,159	5	
	Amhara	West Gojam	Gonji	Conflict	2,654	10,644	12	-	-	-	-	-	2,654	10,644	12	
	Amhara	West Gojam	Merawi Town	Conflict	205	869	3	-	-	-	-	-	205	869	3	
	Amhara	West Gojam	Semen Mecha	Conflict	345	1,607	5	-	-	-	-	-	345	1,607	5	
	Amhara	West Gondar	Metema	Conflict	119	367	1	-	-	-	-	-	119	367	1	
	Amhara	West Gondar	Midre Genet	Conflict	47	186	1	166	625	1	-	-	213	811	2	
	Amhara Total			Conflict	91,556	397,404	466	26,182	90,363	81	21,992	71,690	139,730	559,457	583	
	Beneshangul Gumuz	Asosa	Bambasi	Conflict	-	-	-	3,066	13,058	13	-	-	3,066	13,058	13	
	Beneshangul Gumuz	Asosa	Asosa	Conflict	-	-	-	22	61	1	-	-	22	61	1	
	Beneshangul Gumuz	Assosa Town Administration	Woreda 1	Conflict	-	-	-	108	483	2	151	583	259	1,066	5	
	Beneshangul Gumuz	Assosa Town Administration	Woreda 2	Conflict	-	-	-	125	482	3	-	-	125	482	3	
	Beneshangul Gumuz	Metekel	Dangura	Conflict	3,904	17,405	3	1,037	3,964	1	116	504	5,057	21,873	5	
	Beneshangul Gumuz	Metekel	Mandura	Conflict	-	-	-	651	3,280	3	361	1,756	1,012	5,036	4	

Site Assessment
Round 30
(May 24 - July 9 2022)

Round	Region	Zone	Woreda	Cause	Before 2021			During 2021			In 2022			Total HH	Total Individuals	Total Sites
					HH	Individuals	Sites	HH	Individuals	Sites	HH	Individuals	Sites			
	Beneshangul Gumuz	Metekel	Pawe Special	Conflict	247	878	1	117	501	1	460	1,840	1	824	3,219	3
	Beneshangul Gumuz	Metekel	Bulen	Conflict	3,959	24,372	8	774	4,939	2	-	-	-	4,733	29,311	10
	Beneshangul Gumuz	Metekel	Dibat	Conflict	1,693	9,296	4	4,494	29,378	3	-	-	-	6,187	36,674	7
	Beneshangul Gumuz	Metekel	Wenbera	Conflict	1,140	5,233	6	1,73	942	2	-	-	-	1,313	6,175	8
	Beneshangul Gumuz Total				10,943	57,184	22	10,567	57,088	31	1,088	4,683	6	22,598	118,955	59
	Dire Dawa	Dire Dawa City	Kazira	Conflict	114	570	1	-	-	-	-	-	-	114	570	1
	Dire Dawa Total				114	570	1	-	-	-	-	-	-	114	570	1
	Gambella	Agnuak	Gog	Conflict	755	4,113	2	-	-	-	-	-	-	755	4,113	2
	Gambella	Agnuak	Jore	Conflict	75	421	1	-	-	-	-	-	-	75	421	1
	Gambella	Agnuak	Gambella Zuria	Conflict	-	-	-	-	-	-	32	160	1	32	160	1
	Gambella	Nuer	Jilawo	Seasonal Flood	799	4,028	1	813	5,831	2	-	-	-	1,612	9,859	3
	Gambella	Nuer	Wantawo	Conflict	787	3,935	3	-	-	-	-	-	-	787	3,935	3
	Gambella	Nuer	Wantawo	Seasonal Flood	150	750	1	210	1,050	1	-	-	-	360	1,800	2
	Gambella Total				2,566	13,247	8	1,023	6,881	3	32	160	1	3,621	20,288	12
	Hareri	Hareri	Erer-Woldiya	Conflict	47	235	1	-	-	-	-	-	-	47	235	1
	Hareri	Hareri	Abadir	Conflict	25	125	1	-	-	-	-	-	-	25	125	1
	Hareri	Hareri	Abo Ker	Conflict	30	170	1	-	-	-	-	-	-	30	170	1
	Hareri	Hareri	Amir Nur	Conflict	85	326	1	-	-	-	-	-	-	85	326	1
	Hareri	Hareri	Hakim	Conflict	324	1,517	2	-	-	-	-	-	-	324	1,517	2
	Hareri	Hareri	Jenela	Conflict	32	200	1	-	-	-	-	-	-	32	200	1
	Hareri	Hareri	Shenkor	Conflict	23	51	1	-	-	-	-	-	-	23	51	1
	Hareri	Hareri	Sofi	Conflict	101	509	1	-	-	-	-	-	-	101	509	1
	Hareri Total				667	3,133	9	-	-	-	-	-	-	667	3,133	9
	Oromia	Arsi	Deggeluna Tijo	Conflict	33	129	1	-	-	-	-	-	-	33	129	1
	Oromia	Arsi	Gololcha Arsi	Conflict	28	90	1	-	-	-	-	-	-	28	90	1
	Oromia	Arsi	Gololcha Arsi	Flash Flood	255	1,315	3	-	-	-	-	-	-	255	1,315	3
	Oromia	Arsi	Merti	Conflict	24	134	1	-	-	-	-	-	-	24	134	1
	Oromia	Arsi	Amigna	Conflict	41	144	1	-	-	-	-	-	-	41	144	1
	Oromia	Arsi	Bele Gesgar	Conflict	30	113	1	-	-	-	-	-	-	30	113	1
	Oromia	Arsi	Hitosa	Conflict	24	80	1	-	-	-	-	-	-	24	80	1
	Oromia	Arsi	Robe	Conflict	157	509	1	-	-	-	-	-	-	157	509	1
	Oromia	Arsi	Sude	Conflict	25	83	1	-	-	-	-	-	-	25	83	1
	Oromia	Arsi	Dikis	Conflict	21	56	1	-	-	-	-	-	-	21	56	1
	Oromia	Bale	Meda Weleabu	Conflict	770	3,871	3	-	-	-	-	-	-	770	3,871	3
	Oromia	Bale	Dejo Mena	Conflict	1,140	5,629	2	-	-	-	-	-	-	1,140	5,629	2
	Oromia	Bale	Gura Damole	Conflict	247	1,037	1	-	-	-	206	2,062	1	453	3,099	2
	Oromia	Bale	Gasera	Conflict	67	154	1	-	-	-	-	-	-	67	154	1
	Oromia	Bale	Agarfa	Conflict	63	147	1	-	-	-	-	-	-	63	147	1
	Oromia	Bale	Goba	Conflict	24	57	1	-	-	-	-	-	-	24	57	1
	Oromia	Bale	Sinana	Conflict	57	175	2	-	-	-	-	-	-	57	175	2
	Oromia	Borena	Guchi	Conflict	7,519	37,595	10	-	-	-	-	-	-	7,519	37,595	10
	Oromia	Borena	Moyale	Conflict	1,478	7,390	2	-	-	-	-	-	-	1,478	7,390	2
	Oromia	Borena	Moyale	Conflict	4,001	20,005	4	-	-	-	-	-	-	4,001	20,005	4
	Oromia	Borena	Moyale	Other	3,393	16,938	3	-	-	-	-	-	-	3,393	16,938	3
	Oromia	Borena	Arero	Conflict	518	2,590	1	-	-	-	-	-	-	518	2,590	1
	Oromia	Borena	Wachile	Conflict	1,216	5,880	4	-	-	-	-	-	-	1,216	5,880	4
	Oromia	Borena	Dhaas	Conflict	450	2,250	1	-	-	-	-	-	-	450	2,250	1
	Oromia	Borena	Dillo	Conflict	929	4,645	4	-	-	-	-	-	-	929	4,645	4
	Oromia	Borena	Dillo	Other	203	1,015	1	-	-	-	-	-	-	203	1,015	1
	Oromia	Borena	Dubuluk	Drought	-	-	-	-	-	-	1,410	7,050	1	1,410	7,050	1
	Oromia	Bunmo Becdele	Decesa	Other	1,316	6,781	2	-	-	-	-	-	-	1,316	6,781	2
	Oromia	East Bale	Lege Hida	Conflict	44	197	1	-	-	-	-	-	-	44	197	1
	Oromia	East Bale	Ravitu	Conflict	264	1,453	2	-	-	-	-	-	-	264	1,453	2
	Oromia	East Bale	Ginir	Conflict	97	470	1	-	-	-	-	-	-	97	470	1
	Oromia	East Bale	Gololcha Bale	Conflict	33	60	1	-	-	-	-	-	-	33	60	1
	Oromia	East Bale	Dawe Serer	Conflict	538	2,650	2	-	-	-	-	-	-	538	2,650	2
	Oromia	East Bale	Drought	Drought	-	-	-	-	-	-	510	3,060	1	510	3,060	1
	Oromia	East Bale	Sewena	Conflict	1,089	5,206	3	-	-	-	-	-	-	1,089	5,206	3
	Oromia	East Harerge	Babile	Conflict	969	4,552	17	-	-	-	-	-	-	969	4,552	17

Site Assessment
Round 30
(May 24 - July 9 2022)

Round	Region	Zone	Woreda	Cause	Before 2021			During 2021			In 2022			Total HH	Total Individuals	Total Sites
					HH	Individuals	Sites	HH	Individuals	Sites	HH	Individuals	Sites			
Site Assessment Round 30 (May 24 - July 9 2022)	Oromia	East Harerge	Chinakseen	Conflict	5,923	29,129	31	827	4,185	4	-	-	6,750	33,314	35	
	Oromia	East Harerge	Fedis	Conflict	3,204	13,322	10	-	-	-	-	-	3,204	13,322	10	
	Oromia	East Harerge	Gursum	Conflict	1,376	10,706	23	-	-	-	-	-	1,376	10,706	23	
	Oromia	East Harerge	Kersa	Conflict	412	1,716	5	-	-	-	-	-	412	1,716	5	
	Oromia	East Harerge	Kumbi	Conflict	5,551	32,585	4	-	-	-	-	-	5,551	32,585	4	
	Oromia	East Harerge	Malka Balo	Conflict	473	1,096	6	-	-	-	-	-	473	1,096	6	
	Oromia	East Harerge	Meyu Muluule	Conflict	2,500	12,529	2	-	-	-	-	-	2,500	12,529	2	
	Oromia	East Harerge	Midlega Tola	Conflict	302	1,364	7	-	-	-	-	-	302	1,364	7	
	Oromia	East Harerge	Goro Gutu	Conflict	738	3,080	9	-	-	-	-	-	738	3,080	9	
	Oromia	East Harerge	Kombolcha	Conflict	88	326	3	-	-	-	-	-	88	326	3	
	Oromia	East Harerge	Bedeno	Conflict	124	528	2	-	-	-	-	-	124	528	2	
	Oromia	East Harerge	Deder	Conflict	736	2,738	14	-	-	-	-	-	736	2,738	14	
	Oromia	East Harerge	Garo Muti	Conflict	208	656	6	-	-	-	-	-	208	656	6	
	Oromia	East Harerge	Girawa	Conflict	152	624	4	-	-	-	-	-	152	624	4	
	Oromia	East Harerge	Haro Maya	Conflict	130	594	6	43	194	1	-	-	173	788	7	
	Oromia	East Harerge	Jarso	Conflict	1,501	7,233	7	73	355	2	-	-	1,574	7,588	9	
	Oromia	East Harerge	Kurfa Chele	Conflict	54	209	1	-	-	-	-	-	54	209	1	
	Oromia	East Harerge	Meta	Conflict	143	573	5	-	-	-	-	-	143	573	5	
	Oromia	East Harerge	Golo Oda	Seasonal Flood	233	924	1	-	-	-	-	-	233	924	1	
	Oromia	East Harerge	Awadaj Administrative Town	Conflict	147	836	1	-	-	-	-	-	147	836	1	
	Oromia	East Harerge	Babile Administrative Town	Drought	98	533	1	-	-	-	-	-	98	533	1	
	Oromia	East Harerge	Deder Administrative Town	Conflict	142	761	1	-	-	-	-	-	142	761	1	
	Oromia	East Harerge	Haro Maya Administrative Town	Conflict	970	4,191	8	-	-	-	-	-	970	4,191	8	
	Oromia	East Harerge	Diga	Conflict	92	386	1	-	-	-	-	-	92	386	1	
	Oromia	East Wallaga	Gida Ayana	Conflict	-	-	-	307	1,773	6	-	-	307	1,773	6	
	Oromia	East Wallaga	Guro Gida	Conflict	-	-	-	4,672	25,865	28	424	7	5,096	28,356	35	
	Oromia	East Wallaga	Nekemte Town	Conflict	-	-	-	577	3,241	9	-	-	577	3,241	9	
	Oromia	East Wallaga	Kiramu	Conflict	714	4,293	6	1,668	9,456	20	-	-	2,382	13,749	26	
	Oromia	East Wallaga	Sibu Sire	Conflict	-	-	-	5,480	32,224	18	-	-	5,480	32,224	18	
	Oromia	Guji	Girja (Harefema)	Conflict	-	-	-	373	2,611	2	465	3,134	838	5,745	6	
	Oromia	Guji	Goro Dola	Conflict	-	-	-	-	-	-	70	453	70	453	1	
	Oromia	Guji	Goro Dola	Conflict	-	-	-	1,340	8,629	1	-	-	1,340	8,629	1	
	Oromia	Guji	Goro Dola	Drought	-	-	-	-	-	-	4,270	21,530	4,270	21,530	1	
	Oromia	Guji	Liben	Conflict	945	5,042	6	-	-	-	276	1,794	1,221	6,836	7	
	Oromia	Guji	Liben	Drought	-	-	-	-	-	-	4,028	24,369	4,028	24,369	1	
	Oromia	Guji	Liben	Other	454	2,765	2	-	-	-	-	-	454	2,765	2	
	Oromia	Guji	Negele City Administration	Conflict	596	3,531	1	-	-	-	-	-	596	3,531	1	
	Oromia	Guji	Wadera	Conflict	-	-	-	458	3,226	2	-	-	458	3,226	2	
	Oromia	Guji	Wadera	Other	-	-	-	626	4,744	1	-	-	626	4,744	1	
	Oromia	Jimma	Botor Tolley	Drought	1,231	5,615	6	-	-	-	-	-	1,231	5,615	6	
Oromia	Jimma	Kersa	Other	855	4,978	7	-	-	-	-	-	855	4,978	7		
Oromia	Jimma	Gera	Landslide	220	1,015	2	-	-	-	-	-	220	1,015	2		
Oromia	Jimma	Gumay	Conflict	49	96	1	-	-	-	-	-	49	96	1		
Oromia	Jimma	Jimma Town	Other	612	2,484	2	-	-	-	-	-	612	2,484	2		
Oromia	Jimma	Setema	Conflict	40	69	1	-	-	-	-	-	40	69	1		
Oromia	North Shewa (R4)	Kuyu	Conflict	40	88	1	222	2,288	3	308	2,293	3	570	4,669	7	
Oromia	North Shewa (R4)	Wara Jarso	Conflict	218	669	1	1,770	8,031	4	-	-	1,988	8,700	5		
Oromia	North Shewa (R4)	Degem	Conflict	-	-	-	201	1,055	3	109	456	310	1,511	4		
Oromia	South West Shewa	Wenchi	Conflict	31	65	1	-	-	-	-	-	31	65	1		
Oromia	South West Shewa	Walliso Town	Conflict	31	113	1	-	-	-	-	-	31	113	1		
Oromia	West Arsi	Gedeb Asasa	Conflict	52	200	1	-	-	-	-	-	52	200	1		
Oromia	West Arsi	Shashemene Zuria	Flash Flood	48	215	2	-	-	-	-	-	48	215	2		
Oromia	West Arsi	Siraro	Conflict	3,317	16,585	9	-	-	-	-	-	3,317	16,585	9		
Oromia	West Arsi	Adaba	Conflict	71	179	1	-	-	-	-	-	71	179	1		
Oromia	West Arsi	Dodola	Conflict	41	114	1	-	-	-	-	-	41	114	1		
Oromia	West Arsi	Bishan Guracha City Administration	Flash Flood	21	105	1	-	-	-	-	-	21	105	1		
Oromia	West Arsi	Nensebo (Werake)	Conflict	-	-	-	55	275	-	55	275	55	275	2		
Oromia	West Guji	Dugeda Dawa	Drought	-	-	-	9,548	51,128	9	446	3,122	9,994	54,250	11		

Round	Region	Zone	Woreda	Cause	Before 2021			During 2021			In 2022			Total HH	Total Individuals	Total Sites	
					HH	Individuals	Sites	HH	Individuals	Sites	HH	Individuals	Sites				
Site Assessment Round 30 (May 24 - July 9 2022)	Oromia	West Guji	Dugeda Dawa	Other	-	-	-	1,980	14,065	2	111	629	1	2,091	14,694	3	
	Oromia	West Guji	Galana	Other	-	-	-	711	4,905	-	775	4,817	3	1,486	9,722	4	
	Oromia	West Guji	Suro Barguda	Other	1,186	5,017	2	-	-	-	107	442	1	1,293	5,459	3	
	Oromia	West Guji	Abaya	Other	276	1,675	1	104	874	1	-	-	-	380	2,549	2	
	Oromia	West Guji	Bule Hora	Drought	-	-	-	100	500	1	62	419	1	162	919	2	
	Oromia	West Guji	Bule Hora	Other	-	-	-	2,749	19,210	2	-	-	-	2,749	19,210	2	
	Oromia	West Guji	Bule Hora Town	Other	-	-	-	4,114	26,759	8	605	3,799	8	4,719	30,558	16	
	Oromia	West Harerge	Bordode	Conflict	1,911	9,272	10	-	-	-	132	660	1	2,043	9,932	11	
	Oromia	West Harerge	Doba	Conflict	154	804	3	-	-	-	-	-	-	154	804	3	
	Oromia	West Harerge	Mieso	Conflict	1,427	7,514	8	-	-	-	-	-	-	1,427	7,514	8	
	Oromia	West Harerge	Daro Lebu	Conflict	3,083	3	-	-	-	-	-	-	-	3,083	3	-	
	Oromia	West Harerge	Gemechis	Conflict	33	88	1	-	-	-	-	-	-	33	88	1	
	Oromia	West Harerge	Haw Gudina	Conflict	70	350	1	-	-	-	-	-	-	70	350	1	
	Oromia	West Harerge	Shanan Dhuuqoo	Conflict	51	152	1	-	-	-	-	-	-	51	152	1	
	Oromia	West Harerge	Chiro Town	Conflict	43	58	1	-	-	-	-	-	-	43	58	1	
	Oromia	West Harerge	Gelemso Administrative Town	Conflict	87	296	1	-	-	-	-	-	-	87	296	1	
	Oromia	West Harerge	Hirna Administrative Town	Conflict	119	321	1	32	115	1	-	-	-	151	436	2	
	Oromia	West Harerge	Machara Administrative Town	Conflict	44	181	1	-	-	-	-	-	-	44	181	1	
	Oromia	West Shewa	Dendi	Conflict	34	77	1	-	-	-	-	-	-	34	77	1	
	Oromia	West Shewa	Ambo Town	Conflict	47	132	1	61	363	1	-	-	-	108	495	2	
	Oromia	West Shewa	Adda Beiga	Conflict	-	306	-	306	1,761	4	-	-	-	306	1,761	4	
	Oromia	West Shewa	Bako Tibe	Conflict	-	1,009	-	1,009	3,098	6	469	1,952	3	1,478	5,050	9	
	Oromia	West Shewa	Liben Jawi	Conflict	-	-	-	70	330	3	-	-	-	70	330	3	
	Oromia	West Shewa	Toke Kutaye	Conflict	-	-	-	-	-	-	120	696	2	120	696	2	
	Oromia Total					68,018	336,775	329	41,236	240,399	145	14,958	85,503	46	124,212	662,677	520
	Sidama	Zone 1	Belate Zuria	Conflict	4,685	28,315	15	-	-	-	-	-	-	-	4,685	28,315	15
	Sidama	Zone 1	Hawassa Zuria	Conflict	-	-	-	478	2,282	9	-	-	-	-	478	2,282	9
Sidama	Zone 1	Hawassa Zuria	Flood	254	1,233	4	-	-	-	-	-	-	-	254	1,233	4	
Sidama	Zone 1	Bensa	Conflict	465	5,061	1	-	-	-	-	-	-	-	465	5,061	1	
Sidama	Zone 1	Aleta Chiko	Conflict	-	-	-	113	709	5	-	-	-	-	113	709	5	
Sidama	Zone 1	Bona Zuria	Conflict	-	-	-	22	154	1	-	-	-	-	22	154	1	
Sidama	Zone 1	Bonfaha	Conflict	-	-	-	84	300	3	-	-	-	-	84	300	3	
Sidama	Zone 1	Chirif	Conflict	-	-	-	464	2,659	1	621	4,302	1	1,085	6,961	2		
Sidama	Zone 1	Hawela	Conflict	-	-	-	83	368	2	-	-	-	-	83	368	2	
Sidama	Zone 1	Hula	Conflict	-	-	-	72	414	2	-	-	-	-	72	414	2	
Sidama	Zone 1	Wonosho	Conflict	-	-	-	141	812	5	-	-	-	-	141	812	5	
Sidama	Zone 1	Aleta Worldo	Conflict	-	-	-	63	327	3	-	-	-	-	63	327	3	
Sidama	Zone 1	Bura	Conflict	-	-	-	-	-	-	406	2,185	3	406	2,185	3		
Sidama	Zone 1	Telicha	Conflict	-	-	-	23	122	1	-	-	-	-	23	122	1	
Sidama Total					5,004	34,609	20	1,543	8,147	32	1,027	6,487	4	7,974	49,243	56	
SNNP	Alle Especial Woreda	Alle Especial Woreda	Conflict	-	-	-	-	-	-	-	-	-	-	200	1,150	2	
SNNP	Amaro Special Woreda	Amaro Special Woreda	Conflict	5,895	22,962	13	2,443	11,435	5	-	-	-	-	8,338	34,397	18	
SNNP	Basketo	Basketo SP Woreda	Conflict	76	454	3	-	-	-	-	-	-	-	76	454	3	
SNNP	Burji	Burji	Conflict	250	1,256	1	-	-	-	-	-	-	-	250	1,256	1	
SNNP	Derashie Especial Woreda	Derashie Especial Woreda	Conflict	-	-	-	-	-	-	1,383	10,257	5	1,383	10,257	5		
SNNP	Gamo	Mirab Abaya	Landslide	287	1,865	1	-	-	-	-	-	-	-	287	1,865	1	
SNNP	Gamo	Gerese	Landslide	26	172	1	23	137	1	-	-	-	-	49	309	2	
SNNP	Gofa	Demba Gofa	Landslide	45	270	1	-	-	-	-	-	-	-	45	270	1	
SNNP	Gofa	Geze Gofa	Landslide	300	1,849	5	-	-	-	-	-	-	-	300	1,849	5	
SNNP	Gurage	Melo Koza	Landslide	979	5,874	7	393	2,358	3	123	800	1	1,495	9,032	11		
SNNP	Gurage	Meskan	Conflict	693	4,714	7	99	718	2	-	-	-	-	792	5,432	9	
SNNP	Gurage	Abeshege	Conflict	-	-	-	173	1,058	2	186	1,140	2	359	2,198	4		
SNNP	Hadiya	Dume	Conflict	758	5,148	20	-	-	-	-	-	-	-	758	5,148	20	
SNNP	Hadiya	Misrak Badawacho	Conflict	415	2,765	10	-	-	-	-	-	-	-	415	2,765	10	
SNNP	Hadiya	Misrak Badawacho	Seasonal Flood	28	157	1	-	-	-	-	-	-	-	28	157	1	
SNNP	Hadiya	Shashogo	Conflict	71	497	2	30	210	1	-	-	-	-	101	707	3	
SNNP	Hadiya	Shashogo	Seasonal Flood	534	3,724	3	-	-	-	-	-	-	-	534	3,724	3	
SNNP	Hadiya	Soro	Conflict	393	2,637	11	-	-	-	-	-	-	-	393	2,637	11	
SNNP	Hadiya	Mierab Badawacho	Conflict	-	-	-	72	340	2	-	-	-	-	72	340	2	

Round	Region	Zone	Woreda	Cause	Before 2021			During 2021			In 2022			Total HH	Total Individuals	Total Sites
					HH	Individuals	Sites	HH	Individuals	Sites	HH	Individuals	Sites			
SNNP	Hadiya	Gembora	Conflict	52	352	1	-	-	-	-	-	-	52	352	1	
SNNP	Hadiya	Lemo	Conflict	23	134	1	21	114	1	-	-	-	44	248	2	
SNNP	Hadiya	Mirab Soro	Conflict	134	733	4	-	-	-	-	-	134	733	4		
SNNP	Hadiya	Fonko City Administration	Conflict	277	1,166	4	-	-	-	-	-	277	1,166	4		
SNNP	Kembata Tembaro	Kedjadia Gamella	Conflict	283	2,016	9	-	-	-	-	-	283	2,016	9		
SNNP	Kembata Tembaro	Anigacha	Conflict	210	1,518	5	43	309	1	-	-	253	1,827	6		
SNNP	Kembata Tembaro	Daniboya	Conflict	194	1,675	6	-	-	-	-	-	194	1,675	6		
SNNP	Kembata Tembaro	Kacha Bira	Conflict	22	208	1	-	-	-	-	-	22	208	1		
SNNP	Kembata Tembaro	Doya Oera	Conflict	77	447	3	-	-	-	-	-	77	447	3		
SNNP	Kembata Tembaro	Hadero Tunito	Conflict	205	1,397	5	-	-	-	-	-	205	1,397	5		
SNNP	Kembata Tembaro	Tembaro	Conflict	62	418	3	-	-	-	-	-	62	418	3		
SNNP	Konso	Karat Zuria	Conflict	527	3,197	2	-	-	-	-	-	527	3,197	2		
SNNP	Konso	Segen Zuria	Conflict	135	697	1	125	767	1	1,170	7,298	9	1,697	10,495	11	
SNNP	Konso	Kolme Cluster	Conflict	-	-	-	-	-	-	563	3,341	5	823	4,805	7	
SNNP	Konso	Kena	Conflict	-	-	-	370	2,531	2	239	1,663	4	239	1,663	4	
SNNP	Konso	Karat Ketema	Conflict	-	-	-	-	-	-	106	639	1	106	639	1	
SNNP	Silti	Mierab Azenet Berbere	Conflict	155	554	2	-	-	-	-	-	155	554	2		
SNNP	Silti	Misrak Azenet Berbere	Conflict	33	199	1	-	-	-	-	-	33	199	1		
SNNP	Silti	Sankura	Conflict	74	361	2	-	-	-	-	-	74	361	2		
SNNP	Silti	Wilbareg	Conflict	199	617	3	25	175	1	-	-	224	792	4		
SNNP	Silti	Worabe Ketema Astcaddar	Conflict	242	958	4	-	-	-	-	-	242	958	4		
SNNP	Silti	Alicho Worro	Conflict	108	617	2	-	-	-	-	-	108	617	2		
SNNP	Silti	Kibet Town Administration	Conflict	52	407	1	-	-	-	-	-	52	407	1		
SNNP	South Omo	Bena Tsemay	Conflict	7,758	36,757	10	-	-	-	-	-	137	685	1		
SNNP	South Omo	Dasenech (Kuraz)	Flash Flood	4,157	19,399	14	1,391	6,634	3	-	-	7,758	36,757	10		
SNNP	South Omo	Dasenech (Kuraz)	Seasonal Flood	-	-	-	-	-	-	-	-	5,548	26,033	17		
SNNP	Wolayita	South Ari (Bako Gazar)	Conflict	405	2,453	2	-	-	-	282	1,105	3	282	1,105	3	
SNNP	Wolayita	Kindo Dida	Conflict	595	4,312	7	-	-	-	103	668	2	508	3,121	4	
SNNP	Wolayita	Kindo Koysha	Landslide	-	-	-	-	-	-	-	-	595	4,312	7		
SNNP	Wolayita	Abela Abaya	Flash Flood	600	3,836	4	-	-	-	-	-	273	1,632	5		
SNNP	Wolayita	Damat Sore	Landslide	110	770	2	-	-	-	-	-	600	3,836	4		
SNNP	Wolayita	Damat Weydile	Flash Flood	109	826	2	-	-	-	-	-	110	770	2		
SNNP	Wolayita	Damat Weydile	Landslide	-	-	-	44	260	1	-	-	109	826	2		
SNNP	Wolayita	Seasonal Flood	Seasonal Flood	-	-	-	25	175	1	-	-	44	260	1		
SNNP	Wolayita	Kawo Koysha	Conflict	-	-	-	90	578	2	-	-	25	175	1		
SNNP	Wolayita	Ora	Conflict	-	-	-	53	347	2	-	-	90	578	2		
SNNP	Wolayita	Damat Pulasa	Conflict	-	-	-	86	516	2	74	444	1	160	960	3	
SNNP	Yem	Yem Special Woreda	Landslide	50	230	1	-	-	-	-	-	50	230	1		
SNNP Total				27,937	142,538	195	5,506	28,662	33	4,587	29,310	37	38,030	200,510	265	
Somali	Alder	Cheret/Weyib	Drought	869	5,214	2	-	-	-	-	-	869	5,214	2		
Somali	Alder	Cheret/Weyib	Seasonal Flood	876	5,256	1	-	-	-	-	-	876	5,256	1		
Somali	Alder	Dolobay	Conflict	-	-	-	280	1,680	1	-	-	280	1,680	1		
Somali	Alder	Dolobay	Drought	1,290	7,740	3	-	-	-	-	-	1,290	7,740	3		
Somali	Alder	Dolobay	Seasonal Flood	457	2,742	1	-	-	-	-	-	457	2,742	1		
Somali	Alder	Hargele	Drought	1,258	7,548	3	627	3,762	1	450	2,700	1	2,335	14,010	5	
Somali	Alder	Raso	Conflict	1,270	7,620	1	-	-	-	-	-	1,270	7,620	1		
Somali	Alder	Raso	Drought	582	4,500	2	-	-	-	68	500	1	650	5,000	3	
Somali	Alder	Bare	Drought	3,499	20,994	9	70	420	1	-	-	3,569	21,414	10		
Somali	Alder	God God	Drought	989	5,934	3	-	-	-	-	-	989	5,934	3		
Somali	Alder	Qoohle	Drought	1,079	6,474	3	945	5,670	4	-	-	2,024	12,144	7		
Somali	Alder	Serer/Elkere	Conflict	490	2,940	1	-	-	-	-	-	490	2,940	1		
Somali	Alder	Serer/Elkere	Drought	-	-	-	-	-	-	2,030	13,480	3	2,030	13,480	3	
Somali	Alder	West Imi	Conflict	180	1,300	1	-	-	-	-	-	180	1,300	1		
Somali	Alder	West Imi	Seasonal Flood	400	2,800	1	1,063	6,950	2	-	-	1,463	9,750	3		
Somali	Dawa	Hudet	Conflict	9,774	58,644	19	-	-	-	140	840	1	9,914	59,484	20	
Somali	Dawa	Hudet	Drought	-	-	-	-	-	-	750	4,500	5	750	4,500	5	
Somali	Dawa	Moyale	Conflict	11,916	71,496	10	-	-	-	631	3,786	2	12,547	75,282	12	

Site Assessment
Round 30
(May 24 - July 9 2022)

Round	Region	Zone	Woreda	Cause	Before 2021			During 2021			In 2022			Total HH	Total Individuals	Total Sites
					HH	Individuals	Sites	HH	Individuals	Sites	HH	Individuals	Sites			
Somali		Dawa	Moyelle		-	-	-	2,165	12,990	6	1,405	8,430	7	3,570	21,420	13
Somali		Dawa	Mubarak	Drought	350	2,100	1	875	5,250	2	187	1,122	1	1,225	7,350	3
Somali		Dawa	Mubarak	Conflict	-	-	-	1,035	6,210	3	244	1,464	2	1,222	7,332	4
Somali		Dawa	Qadhadhumo	Drought	1,596	9,576	6	180	1,080	1	69	414	1	2,020	12,120	9
Somali		Dawa	Qadhadhumo	Drought	-	-	-	759	4,554	4	-	-	-	828	4,968	5
Somali		Dawo	Boh	Drought	695	4,170	5	-	-	-	130	780	1	825	4,950	6
Somali		Dawo	Danot	Drought	1,250	7,500	5	-	-	-	-	-	-	1,250	7,500	5
Somali		Dawo	Daratole	Drought	308	1,848	5	-	-	-	-	-	-	308	1,848	5
Somali		Dawo	Gal Hamer	Drought	165	990	1	-	-	-	-	-	-	165	990	1
Somali		Dawo	Geldin	Drought	1,300	7,800	5	-	-	-	-	-	-	1,300	7,800	5
Somali		Dawo	Lahel Yu Ub	Conflict	-	-	-	370	2,220	1	-	-	-	370	2,220	1
Somali		Dawo	Lahel Yu Ub	Drought	1,505	9,030	3	-	-	-	-	-	-	1,505	9,030	3
Somali		Dawo	Warde	Drought	1,900	11,400	7	-	-	-	-	-	-	1,900	11,400	7
Somali		Erer	Lagahida	Conflict	1,702	10,212	6	-	-	-	-	-	-	1,702	10,212	6
Somali		Erer	Lagahida	Drought	270	1,620	1	-	-	-	-	-	-	270	1,620	1
Somali		Erer	Salahad	Conflict	1,588	9,528	8	-	-	-	-	-	-	1,588	9,528	8
Somali		Erer	Salahad	Drought	-	-	-	-	-	-	95	570	1	95	570	1
Somali		Erer	Wangay	Conflict	137	822	2	-	-	-	-	-	-	137	822	2
Somali		Fafan	Babile	Conflict	19,454	116,724	14	-	-	-	-	-	-	19,454	116,724	14
Somali		Fafan	Gursum	Conflict	1,225	7,350	6	-	-	-	-	-	-	1,225	7,350	6
Somali		Fafan	Harshien	Drought	95	570	1	-	-	-	-	-	-	95	570	1
Somali		Fafan	Tulliguled	Conflict	4,285	25,710	4	-	-	-	705	4,230	3	4,990	29,940	7
Somali		Fafan	Jijiga	Conflict	303	1,818	3	-	-	-	-	-	-	303	1,818	3
Somali		Fafan	Jijiga City Administration	Conflict	180	1,080	1	-	-	-	-	-	-	180	1,080	1
Somali		Fafan	Gollano	Drought	-	-	-	-	-	-	369	2,214	2	369	2,214	2
Somali		Fafan	Togs-Wajjale	Drought	-	-	-	-	-	-	93	558	1	93	558	1
Somali		Fafan	Aware	Drought	785	4,710	2	-	-	-	-	-	-	785	4,710	2
Somali		Jarar	Daror	Drought	471	2,826	3	-	-	-	-	-	-	471	2,826	3
Somali		Jarar	Dig	Drought	269	1,614	1	-	-	-	-	-	-	269	1,614	1
Somali		Jarar	Gashamo	Drought	2,205	13,230	5	-	-	-	-	-	-	2,205	13,230	5
Somali		Jarar	Gunagado	Drought	481	2,886	1	-	-	-	-	-	-	481	2,886	1
Somali		Jarar	Bill'libur	Drought	220	1,320	1	-	-	-	36	216	1	256	1,536	2
Somali		Jarar	Degehabur	Conflict	46	276	1	-	-	-	-	-	-	46	276	1
Somali		Jarar	Degehabur	Drought	245	1,470	1	-	-	-	550	3,300	2	795	4,770	3
Somali		Koraha	Bodaley	Drought	68	408	1	-	-	-	-	-	-	68	408	1
Somali		Koraha	Deleweyin	Drought	409	2,454	2	-	-	-	-	-	-	409	2,454	2
Somali		Koraha	Debeweyn	Seasonal Flood	94	564	2	-	-	-	-	-	-	94	564	2
Somali		Koraha	El-ogaden	Drought	260	1,560	2	-	-	-	-	-	-	260	1,560	2
Somali		Koraha	Goglo	Drought	448	2,688	4	-	-	-	-	-	-	448	2,688	4
Somali		Koraha	Kebridehar	Drought	470	2,820	5	-	-	-	230	1,380	1	700	4,200	6
Somali		Koraha	Kebridehar	Flash Flood	516	3,096	1	-	-	-	-	-	-	516	3,096	1
Somali		Koraha	Marsin	Drought	530	3,180	2	-	-	-	-	-	-	530	3,180	2
Somali		Koraha	Shilabo	Conflict	155	930	1	-	-	-	-	-	-	155	930	1
Somali		Koraha	Shilabo	Drought	388	2,328	3	-	-	-	-	-	-	388	2,328	3
Somali		Koraha	Higolay	Drought	77	462	1	-	-	-	-	-	-	77	462	1
Somali		Koraha	Laasdhankeyre	Drought	96	576	1	-	-	-	150	900	1	246	1,476	2
Somali		Koraha	Shekosh	Conflict	-	-	-	-	-	-	150	900	1	150	900	1
Somali		Liben	Deka Seftu	Conflict	6,833	40,998	36	693	4,158	9	-	-	-	7,526	45,156	45
Somali		Liben	Dolo Odo	Drought	-	-	-	-	-	-	40	240	1	40	240	1
Somali		Liben	Dolo Odo	Conflict	450	2,700	1	-	-	-	-	-	-	450	2,700	1
Somali		Liben	Dolo Odo	Drought	615	3,690	2	-	-	-	-	-	-	615	3,690	2
Somali		Liben	Dolo Odo	Flash Flood	276	1,656	1	-	-	-	-	-	-	276	1,656	1
Somali		Liben	Filtu	Conflict	5,283	31,698	25	-	-	-	-	-	-	5,283	31,698	25
Somali		Liben	Filtu	Drought	87	522	1	55	330	1	-	-	-	142	852	2
Somali		Liben	Filtu	Seasonal Flood	150	900	2	-	-	-	-	-	-	150	900	2
Somali		Liben	Karsa Dulla	Conflict	4,113	24,678	11	233	1,398	2	339	2,034	5	4,685	28,110	18
Somali		Liben	Karsa Dulla	Drought	-	-	-	-	-	-	305	1,830	2	305	1,830	2
Somali		Liben	Goro Baqaqa	Conflict	-	-	-	-	-	-	823	4,938	1	1,239	7,434	2
Somali		Liben	Goro Baqaqa	Drought	-	-	-	775	4,650	2	1,103	7,087	3	1,878	11,737	5

Site Assessment
Round 30
(May 24 - July 9 2022)

Round	Region	Zone	Woreda	Cause	Before 2021			During 2021			In 2022			Total Sites		
					HH	Individuals	Sites	HH	Individuals	Sites	HH	Individuals	Sites			
Site Assessment Round 30 (May 24 - July 9 2022)	Somali	Liben	Guradamole	Conflict	2,844	17,064	3	250	1,500	1	450	2,700	1	3,094	18,564	4
	Somali	Liben	Drought	Drought	-	-	-	-	-	-	280	1,680	4	280	1,680	4
	Somali	Liben	Boqpmayayo	Flash Flood	2,178	13,068	1	-	-	-	-	-	-	2,178	13,068	1
	Somali	Nogob	Dhunu	Drought	1,240	7,440	6	-	-	-	-	-	-	1,240	7,440	6
	Somali	Nogob	Elwayne	Drought	936	5,616	7	-	-	-	-	-	-	936	5,616	7
	Somali	Nogob	Gerbo	Conflict	32	192	1	-	-	-	-	-	-	32	192	1
	Somali	Nogob	Gerbo	Drought	2,028	12,168	11	-	-	-	-	-	-	2,028	12,168	11
	Somali	Nogob	Segeg	Conflict	45	270	1	-	-	-	-	-	-	45	270	1
	Somali	Nogob	Segeg	Drought	780	4,680	4	-	-	-	98	588	2	878	5,268	6
	Somali	Nogob	Avruin	Conflict	50	300	1	-	-	-	-	-	-	50	300	1
	Somali	Nogob	Avruin	Drought	-	-	-	-	-	-	930	5,580	5	930	5,580	5
	Somali	Nogob	Hararey	Drought	-	-	-	-	-	-	525	3,150	5	525	3,150	5
	Somali	Nogob	Horashagah	Drought	-	-	-	-	-	-	897	5,382	7	897	5,382	7
	Somali	Nogob	Abaqaro	Drought	215	1,290	1	-	-	-	-	-	-	215	1,290	1
	Somali	Shabelle	Shabelle	Drought	2,389	14,334	10	-	-	-	1,225	7,350	6	3,614	21,684	16
	Somali	Shabelle	Adadle	Seasonal Flood	665	3,990	4	-	-	-	-	-	-	665	3,990	4
	Somali	Shabelle	Berano	Drought	285	1,710	2	-	-	-	-	-	-	285	1,710	2
	Somali	Shabelle	Denan	Drought	1,110	6,660	5	-	-	-	1,823	10,938	6	2,933	17,598	11
	Somali	Shabelle	East Imi	Conflict	189	1,134	3	-	-	-	-	-	-	189	1,134	3
	Somali	Shabelle	East Imi	Drought	769	4,614	3	-	-	-	970	5,820	4	1,739	10,434	7
	Somali	Shabelle	Elele	Drought	256	1,536	1	-	-	-	-	-	-	256	1,536	1
	Somali	Shabelle	Gode	Drought	599	3,594	3	-	-	-	1,428	8,568	6	2,027	12,162	9
	Somali	Shabelle	Gode	Seasonal Flood	150	900	2	-	-	-	-	-	-	150	900	2
	Somali	Shabelle	Kelifo	Drought	406	2,436	2	-	-	-	323	1,938	2	729	4,374	4
	Somali	Shabelle	Kelifo	Seasonal Flood	640	3,840	2	-	-	-	-	-	-	640	3,840	2
	Somali	Shabelle	Mustahil	Flash Flood	251	1,506	1	-	-	-	-	-	-	251	1,506	1
	Somali	Shabelle	Mustahil	Seasonal Flood	5,060	30,360	2	-	-	-	-	-	-	5,060	30,360	2
	Somali	Siti	Ardem	Conflict	230	1,380	1	250	1,500	1	-	-	-	480	2,880	2
	Somali	Siti	Ardem	Drought	1,249	7,494	5	-	-	-	-	-	-	1,249	7,494	5
	Somali	Siti	Erer	Conflict	175	1,050	1	1,086	6,516	2	-	-	-	1,261	7,566	3
	Somali	Siti	Erer	Drought	2,116	12,696	2	-	-	-	-	-	-	2,116	12,696	2
	Somali	Siti	Gabjalu	Conflict	180	1,080	1	-	-	-	-	-	-	180	1,080	1
	Somali	Siti	Gabjalu	Drought	2,134	12,804	3	-	-	-	-	-	-	2,134	12,804	3
	Somali	Siti	Gabjalu	Flash Flood	500	3,000	1	-	-	-	-	-	-	500	3,000	1
	Somali	Siti	Gota-Biki	Conflict	-	-	-	250	1,500	1	-	-	-	250	1,500	1
	Somali	Siti	Gota-Biki	Drought	140	840	2	-	-	-	-	-	-	140	840	2
	Somali	Siti	Haadgab	Drought	480	2,880	2	-	-	-	-	-	-	480	2,880	2
	Somali	Siti	Haadgab	Seasonal Flood	700	4,200	1	-	-	-	-	-	-	700	4,200	1
	Somali	Siti	Miesso	Conflict	2,040	12,240	5	190	1,140	1	91	546	1	2,321	13,926	7
	Somali	Siti	Miesso	Drought	1,656	9,936	7	-	-	-	-	-	-	1,656	9,936	7
	Somali	Siti	Miesso	Flash Flood	130	780	1	-	-	-	-	-	-	130	780	1
	Somali	Siti	Shinile	Drought	504	3,024	1	-	-	-	-	-	-	504	3,024	1
	Somali	Siti	Dembel	Conflict	125	750	1	-	-	-	-	-	-	125	750	1
	Somali Total				135,169	812,642	374	12,974	78,416	47	19,309	117,715	98	167,452	1,008,773	519
	South West Ethiopia Peoples	Bench Sheko	Bench Sheko	Mizan Aman	Conflict	182	874	4	-	-	-	-	-	182	874	4
South West Ethiopia Peoples	Bench Sheko	Bench Sheko	Debul Bench	Conflict	395	1,793	7	90	530	1	-	-	485	2,323	8	
South West Ethiopia Peoples	Bench Sheko	Bench Sheko	Gurafreda	Conflict	155	825	1	164	782	1	-	-	319	1,607	2	
South West Ethiopia Peoples	Bench Sheko	Bench Sheko	Shay Bench	Landslide	33	313	1	-	-	-	-	-	33	313	1	
South West Ethiopia Peoples	Keffa	Keffa	Tulo	Landslide	-	-	-	20	126	1	-	-	20	126	1	
South West Ethiopia Peoples	Keffa	Keffa	Decha	Landslide	-	-	-	21	171	1	-	-	21	171	1	
South West Ethiopia Peoples	Korita	Korita	Arneya Town Administration	Landslide	115	601	3	207	1,030	1	-	-	322	1,631	4	
South West Ethiopia Peoples	Mirab Omo	Mirab Omo	Maji	Conflict	228	1,231	1	-	-	-	-	-	228	1,231	1	
South West Ethiopia Peoples	Sheka	Sheka	Anderacha	Conflict	416	1,899	1	-	-	-	-	-	416	1,899	1	
South West Ethiopia Peoples	Sheka	Sheka	Masha	Conflict	1,213	6,783	5	-	-	-	-	-	1,213	6,783	5	
South West Ethiopia Peoples Total				2,737	14,319	23	622	3,251	6	67,997	331,914	238	352,138	2,716,121	2,120	
Grand Total				352,896	1,858,390	1,490	103,845	525,817	392	67,997	331,914	238	522,138	2,716,121	2,120	



 DTM is made possible thanks to the Bureau of Humanitarian Affairs of the U.S. Agency for International Development (USAID). The opinions expressed in this report are those of the authors and do not necessarily reflect the views of the donor.

ANNEX B

SUMMARY TABLE OF RETURN

Village Assessment Survey



Village Assessment Survey (VAS) Round 13 - from May 24 - July 9 2022 - National Summary Table

Region	Zone	Woreda	# of Assessed Villages	Returning DPs		Returned Migrants (Individual)		Host/Receiving Community		Other Population		Total HHs	Total Individuals
				Household	Individual	Household	Individual	Household	Individual	Household	Individual		
Afar	Awsji (Zone 1)	Aysaita	1	120	720	-	-	-	-	-	-	120	720
Afar	Awsji (Zone 1)	Chifra	26	3,085	18,195	-	-	-	-	-	-	3,085	18,195
Afar	Awsji (Zone 1)	Adaa'r	3	595	3,570	-	-	-	-	-	-	595	3,570
Afar	Fenti (Zone 4)	Awra	5	1,135	6,995	-	-	-	-	-	-	1,135	6,995
Afar	Fenti (Zone 4)	Gulina	6	1,535	9,210	-	-	-	-	-	-	1,535	9,210
Afar	Fenti (Zone 4)	Yalo	7	1,833	10,998	-	-	-	-	-	-	1,833	10,998
Afar	Fenti (Zone 4)	Ewa	13	1,377	8,262	-	-	-	-	-	-	1,377	8,262
Afar	Gabi (Zone 3)	Ambarara	1	139	834	-	-	-	-	-	-	139	834
Afar	Gabi (Zone 3)	Gabi (Zone 3)	2	230	1,380	-	-	-	-	-	-	230	1,380
Afar	Hari (Zone 5)	Hadelela	5	984	5,904	-	-	-	-	-	-	984	5,904
Afar	Hari (Zone 5)	Telajak	3	120	600	-	-	-	-	-	-	120	600
Afar	Kilbati (Zone 2)	Ab Ala	6	1,110	6,660	-	-	-	-	-	-	1,110	6,660
Afar	Kilbati (Zone 2)	Erebbi	2	225	1,250	-	-	-	-	-	-	225	1,250
Afar	Kilbati (Zone 2)	Berahile	11	1,085	6,510	-	-	-	-	-	-	1,085	6,510
Afar	Kilbati (Zone 2)	Koneba	5	690	4,140	-	-	-	-	-	-	690	4,140
Afar	Kilbati (Zone 2)	Koneba	96	14,263	84,808	-	-	-	-	-	-	14,263	84,808
Amhara	North Gondar	Debank	4	569	2,180	-	-	-	-	-	-	569	2,180
Amhara	North Gondar	Addi Arekay	8	1,458	6,125	-	-	-	-	-	-	1,458	6,125
Amhara	North Gondar	Dabatt	4	465	1,900	-	-	-	-	-	-	465	1,900
Amhara	North Shewa (R3)	Shoa Robit City Administration	42	18,170	78,781	-	-	653	2,224	-	-	18,823	81,005
Amhara	North Shewa (R3)	Eferatana Gidem	44	8,246	39,017	238	2,332	2,332	10,666	-	-	10,478	49,921
Amhara	North Shewa (R3)	Ataye City Administration	32	8,379	40,778	-	-	-	-	-	-	8,379	40,778
Amhara	North Shewa (R3)	Kewet	28	6,659	35,587	-	-	959	4,220	-	-	7,618	39,807
Amhara	North Shewa (R3)	Antsokiya	13	2,345	10,840	124	745	3,525	3,050	-	-	3,050	14,489
Amhara	North Shewa (R3)	Menz Gera Midir	33	9,995	43,040	-	-	761	3,148	-	-	10,256	46,188
Amhara	North Shewa (R3)	Tarema Ber	33	5,323	23,678	-	-	774	3,393	-	-	6,097	27,071
Amhara	North Shewa (R3)	Menz Keya Gabriel	12	2,268	11,463	-	-	330	1,629	-	-	2,598	13,092
Amhara	North Shewa (R3)	Mojan Wiedera	38	7,978	36,261	-	-	752	3,366	-	-	8,730	39,857
Amhara	North Shewa (R3)	Menz/Mama Midir	67	13,033	55,038	-	-	630	1,398	-	-	13,663	56,436
Amhara	North Shewa (R3)	Mehal Medta City Administration	25	6,149	28,093	-	-	207	379	-	-	6,356	28,472
Amhara	North Wollo	Gidan	19	6,741	28,159	220	797	3,571	797	-	-	7,538	31,950
Amhara	North Wollo	Guba Lafto	31	7,973	32,315	850	11,205	46,647	850	-	-	19,178	79,812
Amhara	North Wollo	Raya Kobo	34	16,468	66,674	1,515	20,229	20,229	20,229	-	-	21,862	88,418
Amhara	North Wollo	Laeta	11	5,816	21,666	-	-	2,020	9,420	-	-	7,836	30,586
Amhara	North Wollo	Habru	35	37,605	117,887	3,298	19,910	5,452	19,910	-	-	43,057	141,095
Amhara	North Wollo	Lalibela City Administration	10	4,255	14,306	-	-	3,464	14,304	-	-	7,719	29,010
Amhara	North Wollo	Mekket	20	6,472	25,393	3	1,229	3,164	1,229	-	-	6,787	26,625
Amhara	North Wollo	Wadla	20	11,130	49,522	50	299	1,879	1,879	-	-	11,429	51,481
Amhara	North Wollo	Kobo	15	8,401	33,446	617	13,770	34,888	617	-	-	22,171	68,951
Amhara	North Wollo	Woldiya City Administration	32	12,112	50,168	1,011	24,621	81,040	24,621	-	-	36,733	132,219
Amhara	North Wollo	Meressa City Administration	14	8,655	34,806	1,022	5,866	29,788	5,866	-	-	14,521	65,616
Amhara	North Wollo	Flakkt City Administration	4	3,690	13,849	2	1,998	6,060	1,998	-	-	5,688	19,911
Amhara	North Wollo	Gazo	6	1,932	7,903	8	762	3,020	762	-	-	2,694	10,531
Amhara	North Wollo	Gashena City Administration	1	558	2,232	-	-	-	-	-	-	558	2,232
Amhara	North Wollo	Angot	11	2,989	10,283	-	-	1,062	3,339	-	-	4,051	13,822
Amhara	North Wollo	Bugna	6	1,333	5,843	6	1,639	6,500	1,639	-	-	2,972	12,409
Amhara	Oromia	Artuma Fursi	12	13,100	46,753	-	-	1,000	5,000	-	-	14,100	51,753
Amhara	Oromia	Kemisisie City Administration	25	1,750	5,220	136	13,004	62,899	13,004	-	-	14,754	67,725
Amhara	Oromia	Jille Timuga	12	14,566	51,350	-	-	-	-	-	-	14,566	51,350
Amhara	Oromia	Dewa Cheffa	26	6,435	19,302	52	4,862	24,467	4,862	-	-	11,297	43,821

Region	Zone	Woreda	# of Assessed Villages	Returning IDPs		Returned Migrants (Individual)	Host/Receiving Community		Other Population		Total HHs	Total Individuals
				Household	Individual		Household	Individual	Household	Individual		
Amhara	Oromia	Bati	3	1,660	8,300	-	452	2,260	-	-	2,112	10,560
Amhara	South Gondar	Lay Gayint	34	8,854	39,917	-	-	-	-	-	8,854	39,917
Amhara	South Gondar	Farta	19	7,893	38,449	-	-	-	-	-	7,893	38,449
Amhara	South Gondar	Guna Begemidir	19	5,552	26,978	-	-	-	-	-	5,552	26,978
Amhara	South Gondar	Nefas Mewicha city Administration	12	7,297	28,953	-	-	-	-	-	7,297	28,953
Amhara	South Wollo	Kalu	43	12,458	56,269	-	7,800	37,375	-	-	20,258	93,644
Amhara	South Wollo	Abuko	18	1,721	7,453	-	1,778	8,631	-	-	3,499	16,084
Amhara	South Wollo	Tenta	26	9,095	43,445	-	1,893	9,118	-	-	10,988	52,563
Amhara	South Wollo	Were Ilu	28	6,067	26,340	-	2,295	9,649	-	-	8,362	35,989
Amhara	South Wollo	Legambo	56	8,642	35,639	98	3,498	18,056	-	-	12,140	53,793
Amhara	South Wollo	Jama	34	6,845	33,611	838	2,816	12,813	-	-	9,661	47,262
Amhara	South Wollo	Were Ilu city Administration	4	1,294	5,817	-	178	957	-	-	1,472	6,774
Amhara	South Wollo	Thehulederie	43	10,954	54,534	-	2,343	12,021	-	-	13,297	66,555
Amhara	South Wollo	Worebaba	22	4,139	21,888	125	344	1,988	-	-	4,483	23,921
Amhara	South Wollo	Dessie Zuria	17	5,546	17,704	304	1,726	9,234	-	-	7,272	27,242
Amhara	South Wollo	Haveq City Administration	5	2,903	14,551	-	968	4,837	-	-	3,871	19,388
Amhara	South Wollo	Kutaber	21	7,226	29,195	305	4,390	20,476	-	-	11,616	49,976
Amhara	South Wollo	Kelala	27	2,909	13,069	155	784	3,909	-	-	3,693	17,133
Amhara	South Wollo	Ambasel	16	5,171	27,119	-	2,542	13,026	-	-	7,713	40,145
Amhara	South Wollo	Delanta	25	8,898	34,747	-	1,175	4,464	-	-	10,073	39,211
Amhara	Waig Himra	Dehana	11	2,881	10,327	-	1,348	6,937	-	-	4,229	17,264
Amhara	Waig Himra	Sekota	1	150	750	-	-	-	-	-	150	750
Amhara	Waig Himra	Sekota City Administration	7	1,368	5,823	-	850	3,200	-	-	2,218	9,023
Amhara	Waig Himra	Gaz Gibla	4	220	1,100	-	-	-	-	-	220	1,100
Amhara	West Gondar	Adagn Ager Chako	1	438	1,362	-	-	-	-	-	438	1,362
Amhara Total			1,223	392,679	1,632,138	10,977	142,763	587,249	500	500	535,942	2,230,864
Beneshangul Gumuz			18	1,947	9,944	-	-	-	-	-	1,947	9,944
Beneshangul Gumuz			14	2,045	7,662	-	50	397	-	-	2,095	8,059
Beneshangul Gumuz			5	1,528	7,844	-	-	-	-	-	1,528	7,844
Beneshangul Gumuz Total			37	5,520	25,450	-	50	397	-	-	5,570	25,847
Gambella			1	1,378	6,792	-	-	-	-	-	1,378	6,792
Gambella			6	372	1,879	-	745	4,140	-	-	1,117	6,019
Gambella			4	161	793	-	1,071	5,365	-	-	1,232	6,158
Gambella			1	50	250	-	150	708	-	-	200	958
Gambella			4	249	1,020	-	394	1,970	-	-	643	2,990
Gambella			1	66	186	-	-	-	-	-	66	186
Gambella			3	761	3,865	-	-	-	-	-	761	3,865
Gambella			2	904	5,158	-	-	-	-	-	904	5,158
Gambella Total			22	3,941	19,943	-	2,360	12,183	-	-	6,301	32,126
Oromia			3	155	804	-	488	2,630	-	-	643	3,434
Oromia			7	1,861	10,641	-	1,231	6,678	-	-	3,092	17,319
Oromia			12	1,203	6,196	-	2,965	15,682	-	-	4,168	21,878
Oromia			6	1,244	5,767	-	1,489	7,901	-	-	2,733	13,668
Oromia			8	3,185	16,616	-	2,529	13,346	-	-	5,714	29,962
Oromia			18	2,113	11,847	-	-	-	-	-	2,113	11,847
Oromia			37	7,598	47,578	-	-	-	-	-	7,598	47,578
Oromia			2	630	3,742	-	-	-	-	-	630	3,742
Oromia			11	1,949	14,200	-	-	-	-	-	1,949	14,200
Oromia			1	77	356	-	-	-	-	-	77	356

Region	Zone	Woreda	# of Assessed Villages	Returning IDPs		Returned Migrants (Individual)	Host/Receiving Community		Other Population		Total HHs	Total Individuals
				Household	Individual		Household	Individual	Household	Individual		
Oromia	West Harerge	Mieso	1	97	485	-	-	-	-	97	485	
Oromia Total			106	20,112	118,232	-	8,702	46,237	-	28,814	164,469	
Sidama	Hawassa Ketema Asteadaeder Zone 1	Tulla Sub-City Wondo Genet	10	1,370	5,339	-	1,037	5,194	-	2,407	10,533	
Sidama Total			4	1,066	4,268	-	1,037	5,194	-	1,066	4,268	
SNNP	Alle Especial Woreda	Alle Especial Woreda	14	2,436	9,607	-	-	-	-	3,473	14,801	
SNNP	Derashie Especial Woreda	Derashie Especial Woreda	7	697	3,551	50	132	790	-	829	4,391	
SNNP	Gamo	Mirab Abaya	1	1,885	15,302	-	-	-	-	1,885	15,302	
SNNP	Gamo	Gacho Baba	3	140	840	-	-	-	-	140	840	
SNNP	Gofa	Geze Gofa	1	20	131	-	-	-	-	20	131	
SNNP	Gurage	Mareko	2	52	338	-	-	-	-	52	338	
SNNP	Gurage	Misrak Meskan	18	977	5,504	-	4,482	26,895	-	5,459	32,399	
SNNP	Gurage	Chelha	9	391	2,121	-	2,719	15,729	-	3,110	17,850	
SNNP	Hadiya	Misrak Badawecho	1	21	125	-	120	650	-	141	775	
SNNP	Konso	Segen Zuria	1	46	322	-	95	665	-	141	987	
SNNP	Konso	Karat Zuria	16	4,002	25,660	-	637	4,182	-	4,639	29,842	
SNNP	Konso	Kolme Cluster	12	3,035	18,328	-	-	-	-	3,035	18,328	
SNNP	Siti	Alicho Woriro	1	123	1,238	-	-	-	-	123	1,238	
SNNP Total			73	68	612	-	250	2,250	-	318	2,862	
Somali	Liben	Deka Seftu	3	11,457	74,072	50	8,435	51,161	-	19,892	125,283	
Somali Total			3	180	1,020	-	-	-	-	180	1,020	
South West Ethiopia Peoples	Bench Sheko	Debub Bench	3	1,863	8,748	-	-	-	-	1,863	8,748	
South West Ethiopia Peoples	Bench Sheko	Shay Bench	2	342	2,130	-	791	3,675	-	2,654	12,423	
South West Ethiopia Peoples	Bench Sheko	Gurafareda	77	3,327	19,660	-	-	-	-	3,327	19,660	
South West Ethiopia Peoples Total			88	5,532	30,538	-	791	3,675	-	6,323	34,213	
Grand Total			1,662	456,120	1,995,808	11,027	164,138	706,096	500	620,758	2,713,431	



DTM is made possible thanks to the Bureau of Humanitarian Affairs of the U.S. Department of State. The views and opinions expressed in this report are those of the authors and do not necessarily reflect the views of the donor.



dtmethiopia@iom.int



displacement.iom.int/ethiopia

