

Fear of attacks, confirmed attacks by Non-State Armed Groups in Chiure district (Katapua locality) triggered 15,280 individual displacement movements within Chiure and from Katapua locality to Namuno, Quissanga, and Nampula (Namapa locality). An estimate of 515 Internally Displaced Persons (IDPs) have been identified with vulnerabilities. 99% of the recorded movements represent individuals displaced for the first time, 1% for the second time.

IOM teams observed an average of 5,093 individuals arriving at different locations within the reporting period (23 -25 October, please see below for more information). Movements in the region continue to be dynamic among host communities.

The objective of the Emergency Tracking Tool (ETT) - Movement Alert is to collect information on large and sudden population movements, and to provide support to the humanitarian response partners by disseminating data on IDPs to support effective humanitarian response to the affected population. Information is collected through key informants interviews or direct observation. This dashboard provides basic information on displacements, and additional information can be shared upon request.

Arrivals/departures depicts individuals displaced within or from outside the affected districts.
 - Province boundary - Posto boundary - Districts with movements
 - District boundary - Road - XXX Individual displacements - Reported incidents/attacks - Movement direction

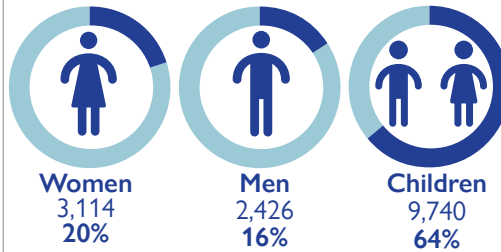
DISCLAIMER: The depiction and use of boundaries, geographic names, and related data shown on maps and included in this report are not warranted to be error free nor do they imply judgment on the legal status of any territory, endorsement or acceptance of such boundaries by IOM.

URGENT NEEDS

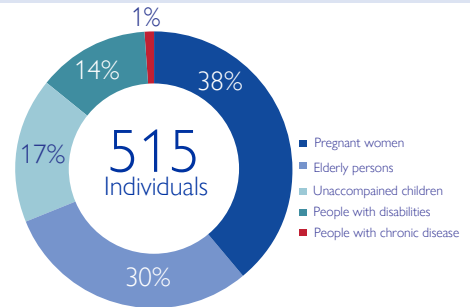


Urgent needs are calculated by weighting the total number of IDP arrivals in each group against the stated priority

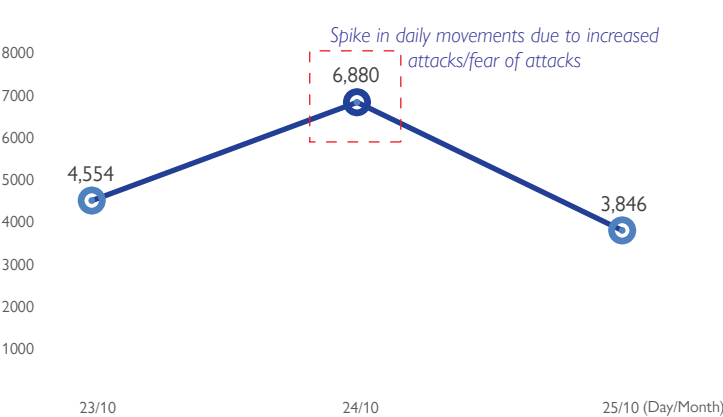
DEMOGRAPHIC PROFILE



VULNERABILITIES



NUMBER OF INDIVIDUALS (23rd - 25th OCTOBER 2022)



MOVEMENT FLOWS (ARRIVALS AT POSTO LEVEL)

