

EMERGENCY EVENT TRACKING

Data collection: 23 October 2022

Conflict



As a subcomponent of the Mobility Tracking methodology (Round Four), the Emergency Event Tracking (EET) tool is deployed to track sudden displacement, provide more frequent updates on the scale of displacement, and quantify the affected population when needed.

Event Overview

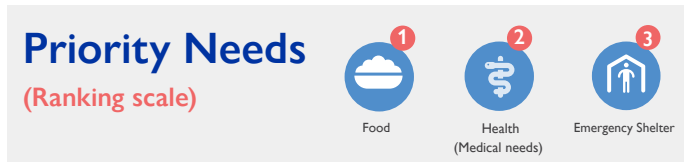
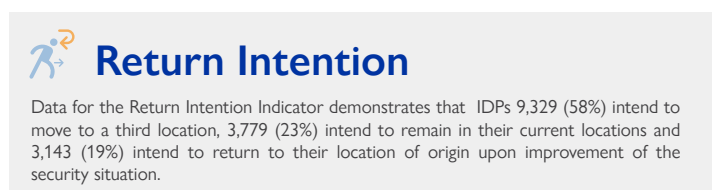
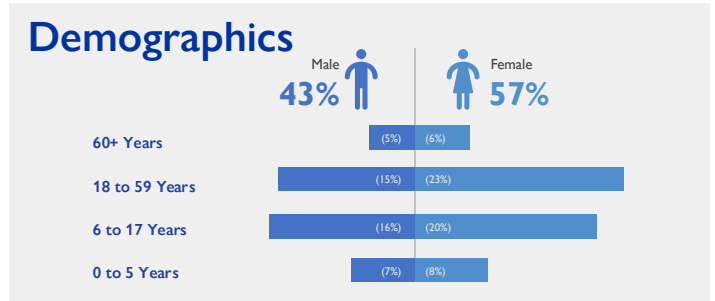
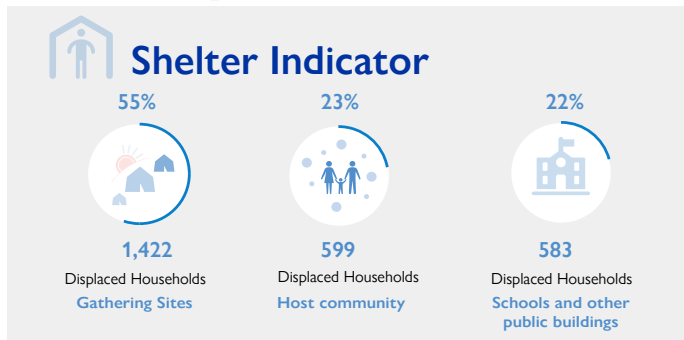
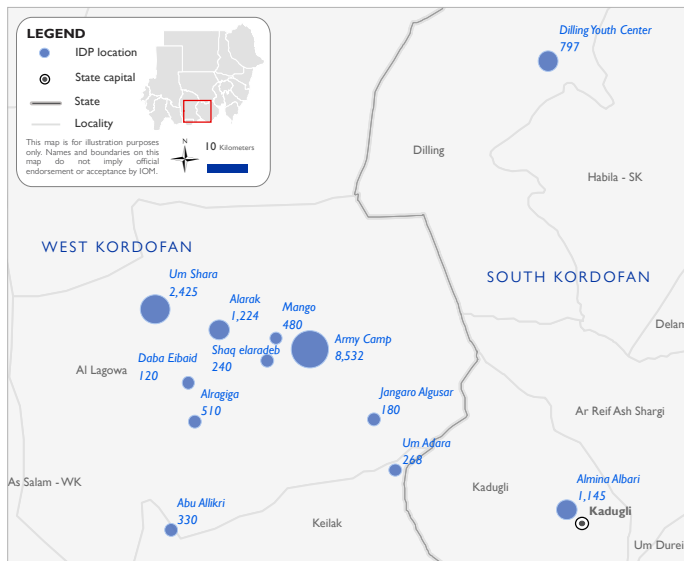


DTM teams activated EET to monitor the displacement of individuals affected by inter-communal violence between the Misseriya and the Nuba tribes in Al Lagowa locality, West Kordofan on 10 October following a dispute over land ownership. Clashes erupted on the road between Gengaru village and Al Lagowa Town which resulted in four Misseriya individuals being killed and three being injured.

On 14 and 15 October 2022, violence spread to Al Lagowa Town in Al Lagowa locality, West Kordofan. Field teams reported the burning and looting of several houses in neighbourhoods across Al Lagowa Town, including Hai Alsarf, Hai Aldbkaya, Hai Alwehda, Hai Krgadi, and Hai Algarby. At that time, field teams reported that residents were displaced to Al Lagowa Army Base, Al Lagowa's police station, and the girl's primary school on the outskirts of the town. On 18 October 2022, members of the Nuba tribe attacked residents of Al Lagowa Town. Field teams report the use of heavy artillery, with local authorities relocating all displaced households within Al Lagowa Town from the police station and girl's school to Al Lagowa's army base. The army base sits at the outskirts of the town and was not subject to the bombardment. There were no additional reported deaths or injuries. Field teams indicate that there were no further incidents over the following days.

The first update estimates that there are currently 16,251 IDPs (2,604 households) displaced across Al Lagowa (84%) and Keilak localities (4%) in West Kordofan and Kadugli (7%) and Dilling (5%) localities in South Kordofan. Humanitarian access to several locations across Al Lagowa locality is heavily restricted given the volatile security situation. Field teams are currently preparing data collection exercises for an updated figure in the coming days, which is likely to reflect the presence of a larger IDP caseload. Field teams report that the displaced caseload in the villages immediately surrounding Al Lagowa Town is predominantly comprised of members from the Misseriya, Fallata, and Dajo tribes. Furthermore, field teams report that the displaced caseload in the mountainous regions approximately 10km East of Al Lagowa Town is predominantly comprised of members from the Nuba, Dago, Tulshi, and Kmad tribes. The entire IDP caseload was originally displaced from Al Lagowa locality (100%), West Kordofan.

DTM field teams estimate that, in triangulation with other sources, at least 40 individuals were killed with a further 77 individuals sustained injuries since data collection procedures began. A total of 5,360 reported cases of lost goods, livestock, and/or cattle. All displaced individuals are Sudanese nationals. At least 2,114 cases of additional vulnerabilities in need of assistance and support were identified by key informants through DTM's Protection indicator. Additionally, DTM Sudan estimates that there are approximately 2,438 persons with disabilities among the IDP caseload.* Based on a ranking scale, the three priority needs across the caseload are Food, Health (medical needs) and Emergency Shelter.



IOM DISCLAIMER
The opinions expressed in the report are those of the authors and do not necessarily reflect the views of the International Organization for Migration (IOM). The designations employed and the presentation of material throughout the report do not imply the expression of any opinion whatsoever on the part of IOM concerning the legal status of any country, territory, city or area, or of its authorities, or concerning its frontiers or boundaries.
IOM is committed to the principle that humane and orderly migration benefits migrants and society. As an intergovernmental organization, IOM acts with its partners in the international community to: assist in the meeting of operational challenges of migration; advance understanding of migration issues; encourage social and economic development through migration; and uphold the human dignity and well-being of migrants.

*DTM Sudan adopts the WHO global estimate that approximately 15% of the total population are persons with disabilities (PwD).