



Affected Population:
7,466 Individuals



Damaged Shelters:
701



Casualties:
176

Movement Trigger:
Attacks/Floods

OVERVIEW

On 04 and 06 October, armed herders reportedly attacked the communities Ityuluv in Ityuluv ward of Ukum LGA and Tsukwa in Tombo ward of Logo LGA. Both LGAs are located in Benue State. The attacks affected 1,030 individuals and led to the displacement of 1,010 individuals to Zaki Biam in Uyam ward of Ukum LGA and Government Secondary Technical School Anyiin Camp in Mbagber ward of Logo LGA. As a result of the attacks, 20 fatalities and 36 injuries were reported.

On 03 and 05 October, due to the opening of the Lagdo dam in Cameroon, the river Benue overflowed and caused floods in the communities Inniongun in Modern Market ward of Makurdi LGA and Usha in Usha ward of Agatu LGA in Benue state. The floods affected 762 individuals and displaced them to neighbouring communities. As a result of the floods, 3 injuries were reported.

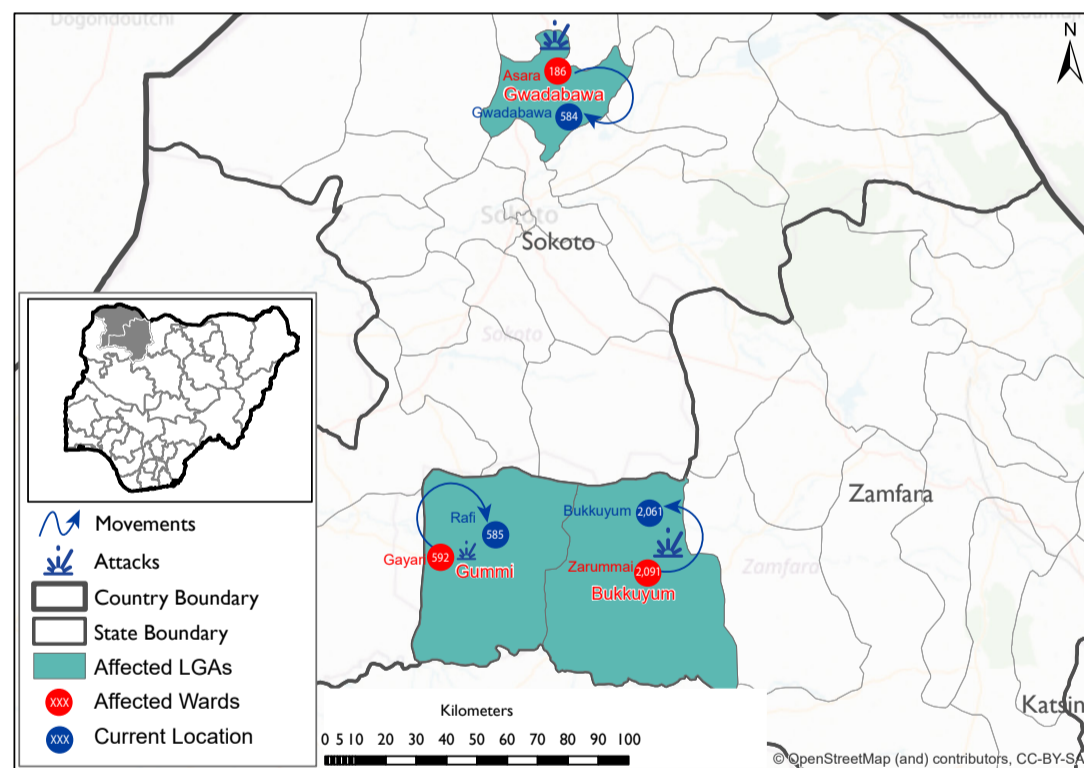
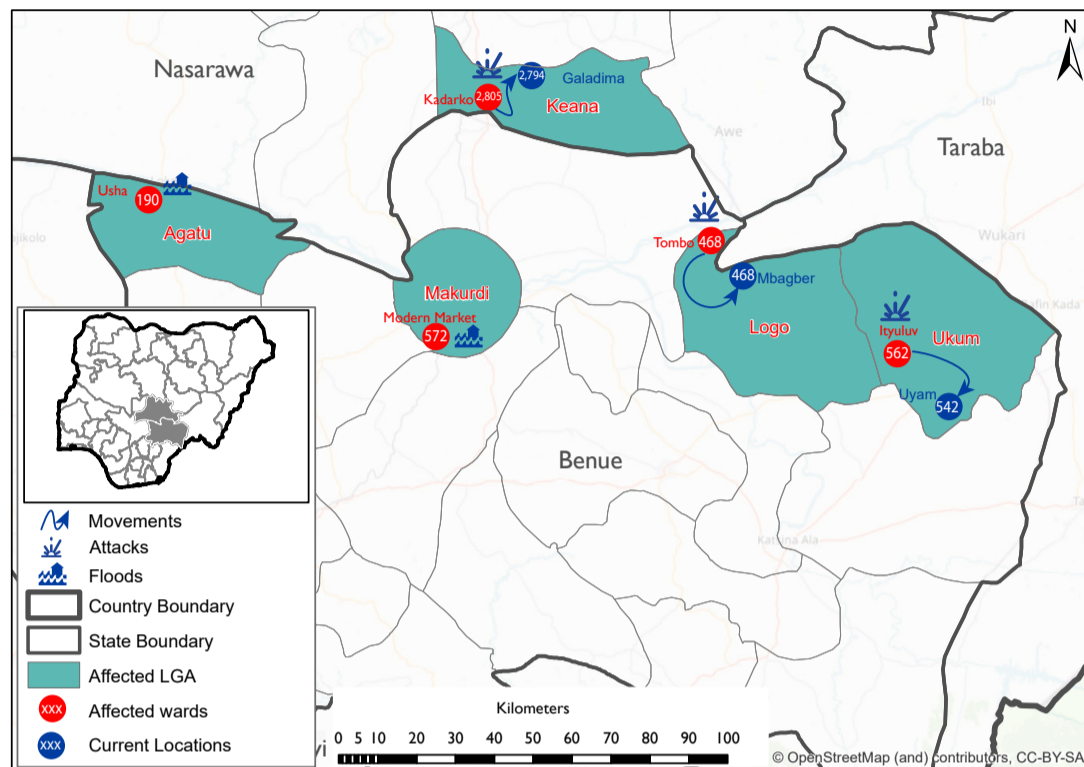
On 09 October, armed herders reportedly attacked the communities Rest House/Gidan Sule, Ocha, Nyamadaga, Ipana, Agon, Agada and Kala in Kadarko ward of Keana LGA in Nasarawa state. The attacks affected 2,805 individuals and led to the displacement of 2,794 individuals to Giza Primary School Camp in Giza ward and neighbouring wards. As a result of the attacks, 11 fatalities and 7 injuries were reported.

On 06, 08 and 09 October, armed bandits reportedly attacked the communities Birnin Waje, Gwama village, Dabguruba and Tashi Taya village in Zurumai ward of Bukkuyum LGA, Tashar Turame village in Gayari ward of Gummi LGA of Zamfara state and Mamman Suka of Asara ward of Gwadabawa LGA of Sokoto state. The attacks affected 2,869 individuals and led to the displacement of 2,831 individuals to Bukkuyum town and Rafi in Zamfara state and Gwadabawa town in Sokoto state. As a result of the attacks, 38 fatalities and 61 injuries were reported.

Following these events, rapid assessments were conducted by DTM (Displacement Tracking Matrix) field staff to inform the humanitarian community and government partners to enable targeted response. Flash reports utilise direct observation and a broad network of key informants to gather representative data and collect information on the number, profile and immediate needs of affected populations.

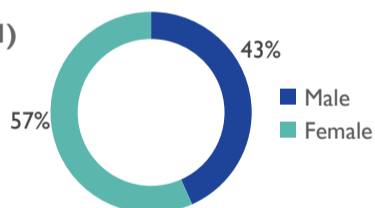
Nigeria's north-central and north-west zones are afflicted with a multi-dimensional crisis. Firstly, long standing tensions between ethnic and religious groups often result in attacks and banditry or hirabah. These attacks involve kidnapping and grand larceny along major highways by criminal groups. Secondly, with the onset of the rainy season in the region, many areas have been affected by torrential rains and floods have devastated various communities. Infrastructure, crops and shelters have been damaged which led to decimated livelihoods and the displacement of numerous households. During the past years and as a result of the consequences of climate change, the crisis accelerated and has resulted in widespread displacement across the north-central and north-western region.

Maps of affected areas

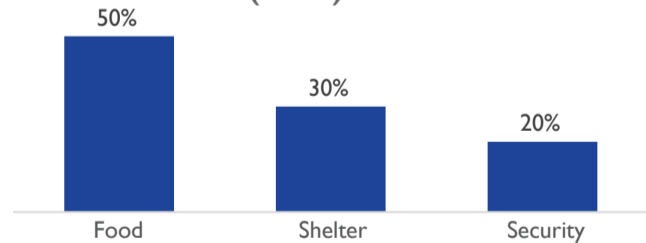


The above maps are for illustration purposes only. The depiction and use of boundaries, geographic names and related data shown are not warranted to be error-free nor do they imply a judgment on the legal status of any territory, or any endorsement or acceptance of such boundaries by IOM. The above figures stated on the map refers to the total number of individuals affected, which includes the number of displaced persons and the fatalities recorded in the affected LGAs in the north-central and north-west region of Nigeria.

GENDER TOTAL (FIG. 1)



MOST NEEDED ASSISTANCE (FIG. 2)



State	LGA	Ward	Cause of Incident	Number of Affected Households	Number of Affected Individuals	Casualties	Male	Female	Children	Number of damage shelters
Benue	Agatu	Usha	Floods	32	190	0	84	106	70	33
Benue	Logo	Tombo	Attacks	127	468	0	204	264	162	66
Benue	Makurdi	Modern Market	Floods	96	572	3	271	301	187	107
Benue	Ukum	Ityuluv	Attacks	93	562	56	267	295	183	99
Sokoto	Gwadabawa	Asara	Attacks	43	186	5	83	103	77	20
Zamfara	Bukkuyum	Zurummai	Attacks	358	2,091	62	833	1,258	886	301
Zamfara	Gummi	Gayari	Attacks	87	592	32	212	380	306	75
Nasarawa	Keana	Kadarko	Attacks	561	2,805	18	1,280	1,525	1,495	0
Grand Total				1,397	7,466	176	3,234	4,232	3,366	701

*When quoting, paraphrasing, or in any other way using the information mentioned in this report, the source needs to be stated appropriately as follows: "Source: Displacement Tracking Matrix (DTM) of the International Organization for Migration (IOM), Nigeria Mission, October 2022."