

| | | | | | | |
|------------------------------------|---------------------------------------|---------------------------------|-------------------------|---------------------------------|-------------------------------|---|
| | | | | | | |
| Affected Households: 188 | Affected Individuals: 1,174 | Damaged Shelters: 101 | Casualties: 0 | Affected Locations: 6 | Damaged Toilets: 87 | Damaged Bathing Facilities: 0 |

OVERVIEW

With the onset of the rainy season in Nigeria's northeastern states of Yobe and Bauchi, varying degrees of damages have been reported in locations in Warji, Karasuwa and Geidam LGAs. Heavy rainfall resulted in floods and caused serious damages to shelters and infrastructure.

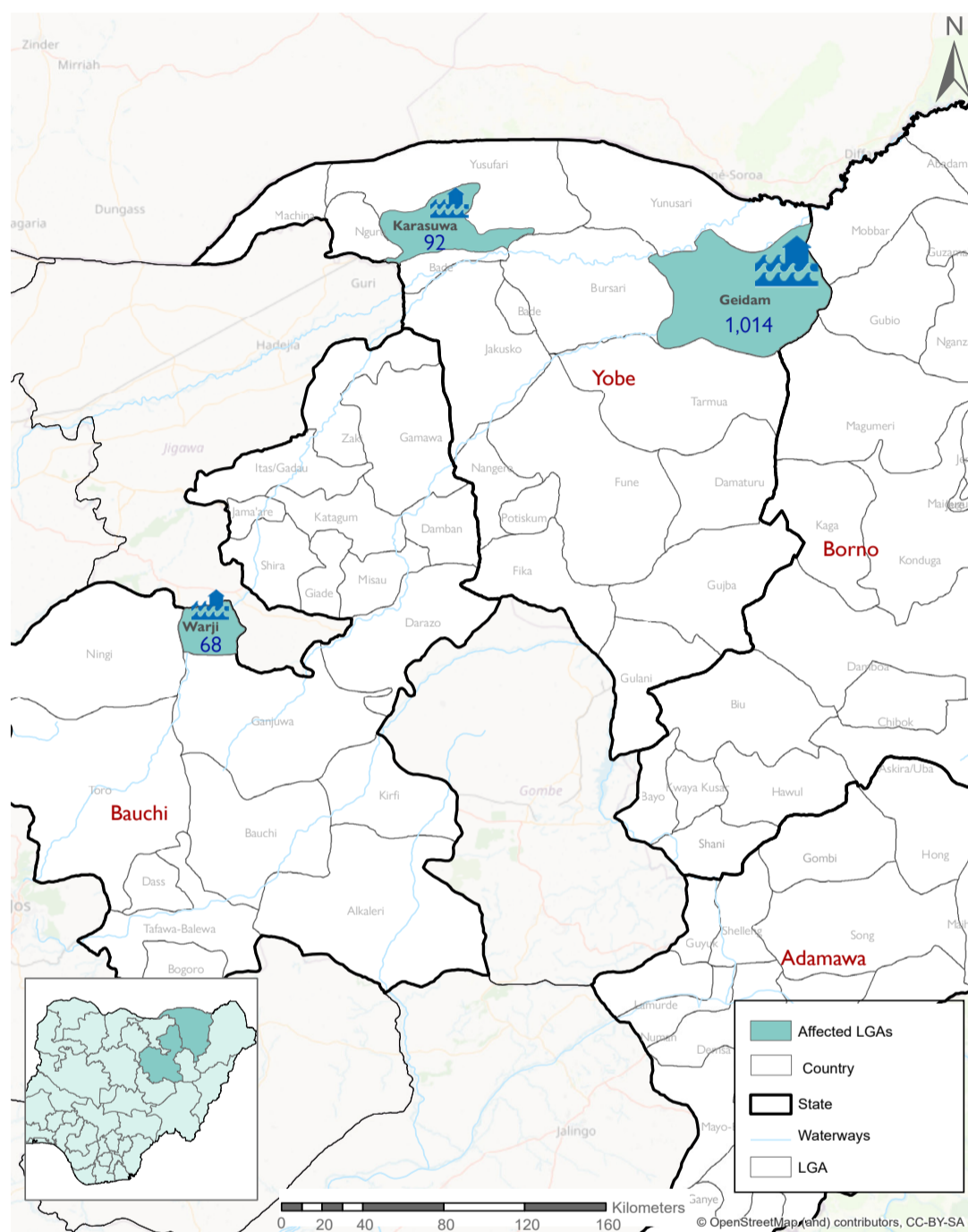
Between 27 September and 11 October 2022, IOM's DTM programme carried out assessments to ascertain the level of damage sustained in the affected locations. Overall, 6 locations in Warji, Karasuwa and Geidam LGAs were assessed. The worst-hit of the assessed sites was Kwata, a host community location in Kawuri ward of Geidam LGA, where flood damaged 89 shelters, affecting an estimated 1,014 individuals.

In total, 156 shelters were either damaged by rainfall or floods, leaving a total of 1,174 households in immediate need of shelter. No casualties were reported as a result of the floods.

NEEDS

There is a major need of shelter repair kits, WASH assistance, psychosocial support and NFI assistance as most shelters need re-enforcement.

AFFECTED LOCATIONS



The map in this report are for illustration purposes only. The depiction and use of boundaries, geographic names, and related data shown on map and included in this report are not warranted to be error free nor do they imply judgment on the legal status of any territory, or any endorsement or acceptance of such boundaries by IOM



| LGA | Ward | Site Type | Site Name | Cause of incident | No. of Affected Households | No. of Affected Individuals | Male | Female | Children | Casualties | No. of Damaged Shelters |
|-------------|-----------|------------------|-----------------|-------------------|----------------------------|-----------------------------|------|--------|----------|------------|-------------------------|
| Warji | Katanga | Host Communities | Angwan Gandhi | Floods | 6 | 23 | 4 | 3 | 16 | 0 | 2 |
| | Tiyin | Host Communities | Kahan | Floods | 4 | 18 | 2 | 3 | 13 | 0 | 0 |
| | Tudun | Host Communities | Tudun wada east | Floods | 2 | 11 | 1 | 2 | 8 | 0 | 0 |
| | Dagu east | Host Communities | Angwan sarki | Floods | 3 | 16 | 3 | 3 | 10 | 0 | 1 |
| Warji total | | | | | 15 | 68 | 10 | 11 | 47 | 0 | 3 |
| Karasawa | Gamsa | Host Communities | Gamsa | Floods | 17 | 92 | 16 | 21 | 55 | 0 | 9 |
| Geidam | Kawuri | Host Communities | Kwata | Floods | 156 | 1014 | 204 | 330 | 480 | 0 | 89 |
| Grand Total | | | | | 188 | 1174 | 230 | 362 | 582 | 0 | 101 |

"When quoting, paraphrasing, or in any other way using the information mentioned in this report, the source needs to be stated appropriately as follows: "Source: Displacement Tracking Matrix (DTM) of the International Organization for Migration (IOM), Nigeria Mission, OCTOBER 2022.""

For more information or to report an alert, please contact:
DTM Nigeria: iomnigeriadtm@iom.int
<https://displacement.iom.int/nigeria> ; <https://dtm.iom.int/nigeria>

