



**OVERVIEW**

With the onset of the rainy season in Nigeria's northeastern states of Borno, Adamawa, Bauchi and Yobe, varying degrees of damage have been reported in host communities, camps and camp-like settlements. Heavy rainfalls, accompanied by strong winds have resulted in floods and damage to shelters and infrastructures.

Between 14 and 26 September 2022, IOM's DTM programme carried out assessments to ascertain the level of damage sustained in camps and locations where IDPs are residing in the host community. Overall, 7 host community locations and 5 camps were assessed. The worst-hit of the assessed sites was Alhaji Bashir Camp, located in Dikwa ward of Dikwa LGA, in Borno State. The flooding of the camp displaced an estimated 3,605 individuals to neighbouring villages and communities.

In total, 1,681 shelters/houses were damaged by the floods, leaving a total of 2,643 households (1,757 in Borno, 91 in Adamawa, 145 in Bauchi and 564 in Yobe) in immediate need of shelter. Twenty-nine casualties were reported as a result of the recent rainstorms and floods.

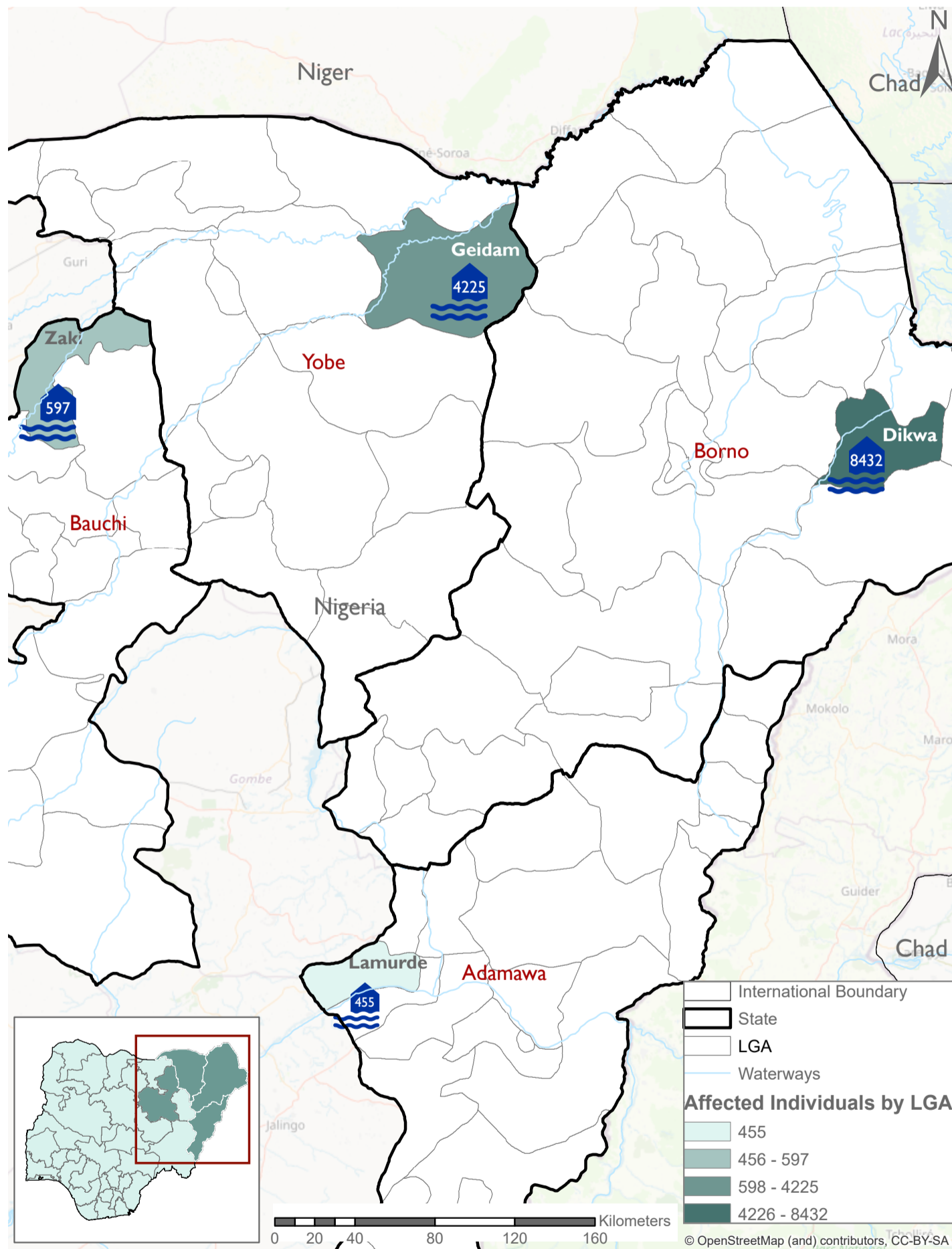
A total of 13,709 individuals have been displaced by heavy rainfalls and consequent flooding since the start of the rainy season in June 2022, (8,432 in Borno State, 455 in Adamawa State, 597 in Bauchi State and 4,225 in Yobe State). Most of the affected population was displaced to neighbouring localities in the same ward that were less impacted by the floods. These locations are often only up to 500 meters from their location of residence.

**NEEDS**

Shelter, shelter repair kits and a good drainage system have been the major needs of the affected population.

The affected individuals in Dikwa LGA in Borno State have received food, NFIs and shelter repair kits from the government and NGOs.

**AFFECTED LGAs**



The maps in this report are for illustration purposes only. The depiction and use of boundaries, geographic names, and related data shown on maps and included in this report are not warranted to be errors free nor do they imply judgment on the legal status of any territory, or any endorsement or acceptance of such boundaries by IOM



Displaced persons in Kirkasama, Geidam LGA



Flooded area in Lodiyo, Zaki LGA



Flooded area in Sakwa, Zaki LGA



Flooded area in Damakarwa, Geidam LGA



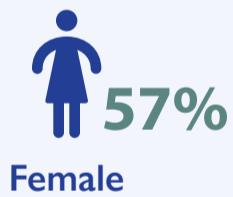
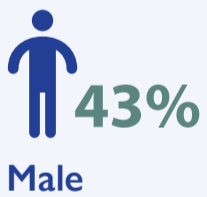
Flooded area in Karfin larabawa, Zaki LGA



Flooded area in Gumsa, Geidam LGA



Flooded area in Kirkasama, Geidam LGA



## AFFECTED LOCATIONS

State	LGA	Ward	Site Type	Site Name	Number of Affected Households	Number of Affected Individuals	Male	Female	Children	Casualties	Number of Damaged Shelter
Adamawa	Lamurde	Lafiya	Host Communities	Lafiya	91	455	225	230	255	5	91
Bauchi	Zaki	Alangawari/Kafin/Larabawa	Host Communities	Alangawari	29	116	48	68	60	2	33
		Bursali	Host Communities	Bursali	18	78	36	42	39	3	18
		Bursali	Host Communities	Lodiyo	32	195	83	112	122	11	32
		Sakwa	Host Communities	Sakwa	66	208	93	115	70	8	33
<b>Bauchi Total</b>					<b>145</b>	<b>597</b>	<b>260</b>	<b>337</b>	<b>291</b>	<b>24</b>	<b>116</b>
Borno	Dikwa	Dikwa	Camp	1000 Camp Dikwa	24	126	53	73	102	0	126
		Dikwa	Camp	Klagaru	225	1,127	489	638	902	0	700
		Dikwa	Camp	Ministry of Works Camp	97	488	210	278	344	0	97
		Dikwa	Camp	Alhaji Bashir Camp	577	3,605	1,652	1,953	2,950	0	103
		Dikwa	Camp	Motor Park IDP Camp	834	3,086	1,275	1,811	2,252	0	448
<b>Borno Total</b>					<b>1,757</b>	<b>8,432</b>	<b>3,679</b>	<b>4,753</b>	<b>6,550</b>	<b>0</b>	<b>1,474</b>
Yobe	Geidam	Damakarwa/Kusur	Host Communities	Kirikasamma	38	247	99	148	123	0	0
		Gumsa	Host Communities	Damakarwa	48	312	124	188	141	0	0
		Shame Kura/Dilawa	Host Communities	Gumsa	564	3,666	1,469	2,197	1,735	0	0
<b>Yobe Total</b>					<b>650</b>	<b>4,225</b>	<b>1,692</b>	<b>2,533</b>	<b>1,999</b>	<b>0</b>	<b>0</b>
<b>Grand Total</b>					<b>2,643</b>	<b>13,709</b>	<b>5,856</b>	<b>7,853</b>	<b>9,095</b>	<b>29</b>	<b>1,681</b>

"When quoting, paraphrasing, or in any other way using the information mentioned in this report, the source needs to be stated appropriately as follows: "Source: Displacement Tracking Matrix (DTM) of the International Organization for Migration (IOM), Nigeria Mission, SEPTEMBER 2022.""

For more information or to report an alert, please contact:  
DTM Nigeria: [iomnigeriadtm@iom.int](mailto:iomnigeriadtm@iom.int)  
<https://displacement.iom.int/nigeria> ; <https://dtm.iom.int/nigeria>



**NHF** Nigeria Humanitarian Fund



**DTM**



Humanitarian Aid and Civil Protection