

EMERGENCY EVENT TRACKING

Data collection: 22 September 2022

Flooding



As a subcomponent of the Mobility Tracking methodology (Round Four), the Emergency Event Tracking (EET) tool is deployed to track sudden displacement, provide more frequent updates on the scale of displacement, and quantify the affected population when needed.

Event Overview



770

IDP individuals



110

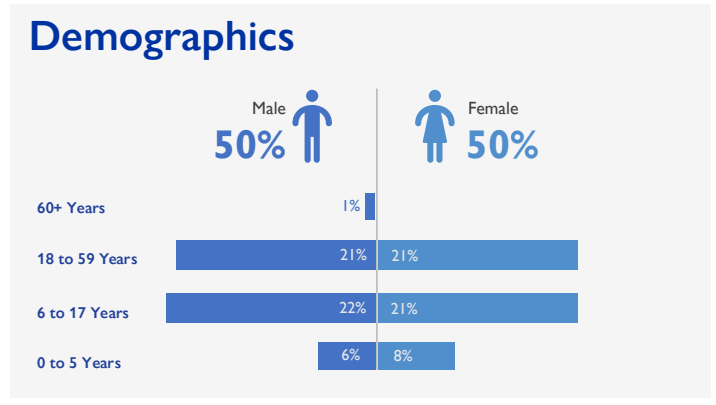
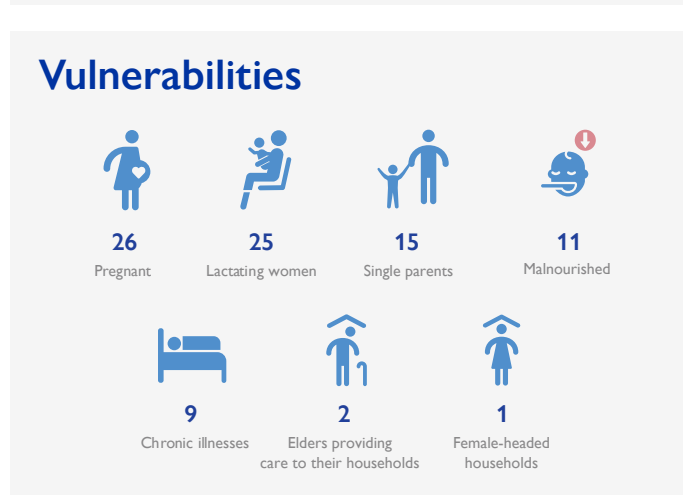
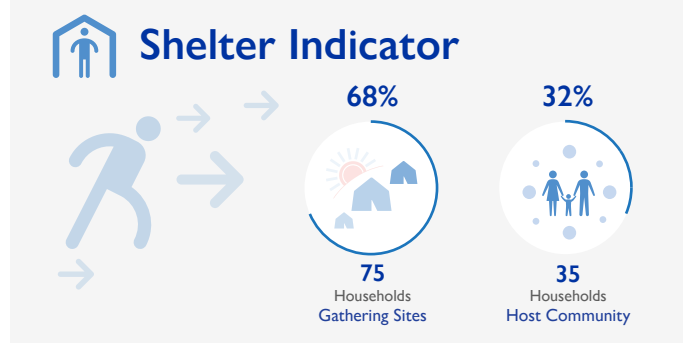
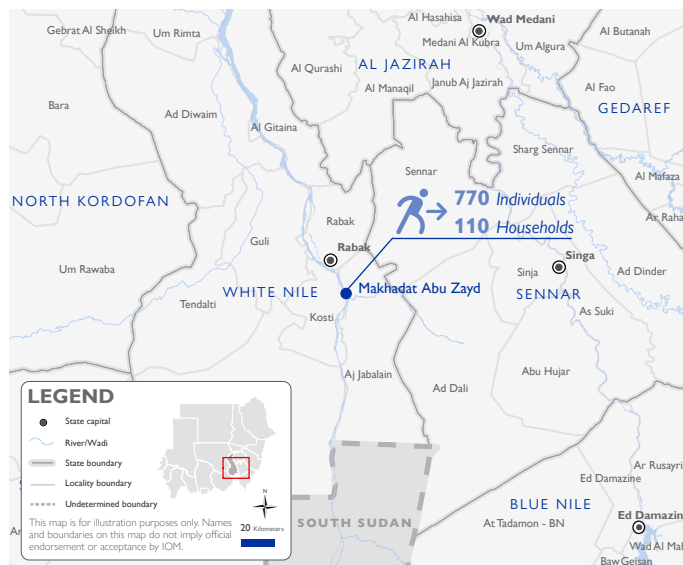
IDP households

DTM teams activated EET to monitor the displacement of individuals affected by heavy rains and flooding in Makhadat Abu Zayd village in Aj Jabalain locality, White Nile state on 22 September 2022.

The first EET update estimates that a total number of 770 individuals (110 households) are currently displaced to gathering sites and host communities across Al Makhada Shimal in Aj Jabalain locality, White Nile. The entire IDP caseload (100%) was originally displaced from Makhadat Abu Zayd village in Aj Jabalain locality, White Nile.

DTM field teams have confirmed that no individuals were killed or injured. Additionally, there have been no reported cases of lost goods, livestock, and/or cattle. All displaced individuals are Sudanese nationals.

At least 89 cases of additional vulnerabilities in need of assistance and support were identified by key informants through DTM's Protection Indicator. Additionally, DTM Sudan estimates that there are approximately 116 persons with disabilities among the IDP caseload.* Based on a ranking scale, the three priority needs across the caseload are Water, Sanitation, and Hygiene (WASH), Emergency Shelter and Food.



Return Intention

Data collected through the Return Intention Indicator estimates that the entire IDP caseload (100%) intends to return to their locations of origin as soon as the Rainy Season concludes. More specifically, the IDP caseload in Makhadat Abu Zayd village intend to return to their locations of origin once the flooding subsides.

IOM DISCLAIMER

The opinions expressed in the report are those of the authors and do not necessarily reflect the views of the International Organization for Migration (IOM). The designations employed and the presentation of material throughout the report do not imply the expression of any opinion whatsoever on the part of IOM concerning the legal status of any country, territory, city or area, or of its authorities, or concerning its frontiers or boundaries.

IOM is committed to the principle that humane and orderly migration benefits migrants and society. As an intergovernmental organization, IOM acts with its partners in the international community to: assist in the meeting of operational challenges of migration; advance understanding of migration issues; encourage social and economic development through migration; and uphold the human dignity and well-being of migrants.

* DTM Sudan adopts the WHO global estimate that approximately 15% of the total population are persons with disabilities (PwDs).