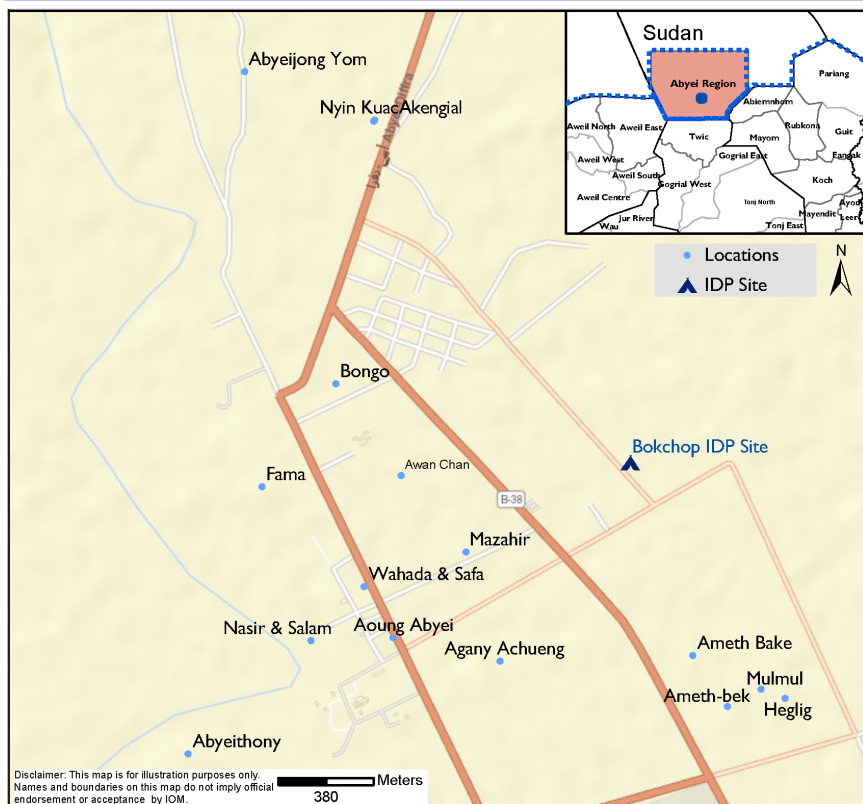


## Bokchop IDP Site Map Overview

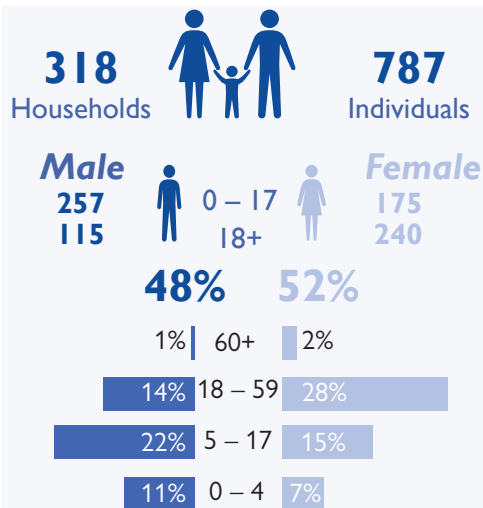


Northern parts of Abyei Administrative Area (AAA) experienced rounds of localized conflict between February and March 2022. This led to displacement of people mostly from Amiet area leading to formation of Bokchop IDP site to accommodate internally displaced people (IDP) who were in search of safety within the neighbourhood of Abyei Town.

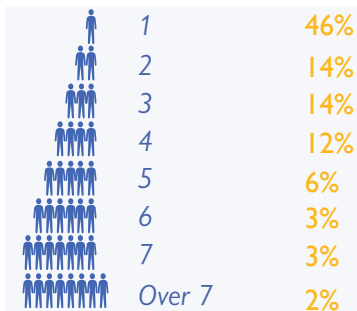
The International Organization for Migration's Displacement Tracking Matrix (IOM DTM) in South Sudan maintains biometric registration database of IDPs in displacement sites. DTM carried out its first registration at Bokchop IDP site in September 2022. During the registration a total of **787** individuals belonging to **318** households were registered.

Forty-two per cent of the registered population were between 18 and 59 years of age, among which 28 per cent were female. The general overview of the registration shows that 52 per cent of the total population were females while 48 per cent were male. Among the recorded household sizes, individuals with household size one were most dominant (46%), followed by household size 2 (14%) and size 3 (14%). In the category of vulnerabilities, breastfeeding mothers were the most recorded individuals (4%).

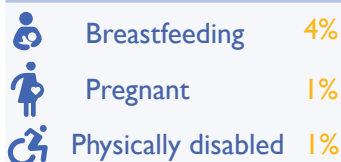
### Population Profile



### Households size

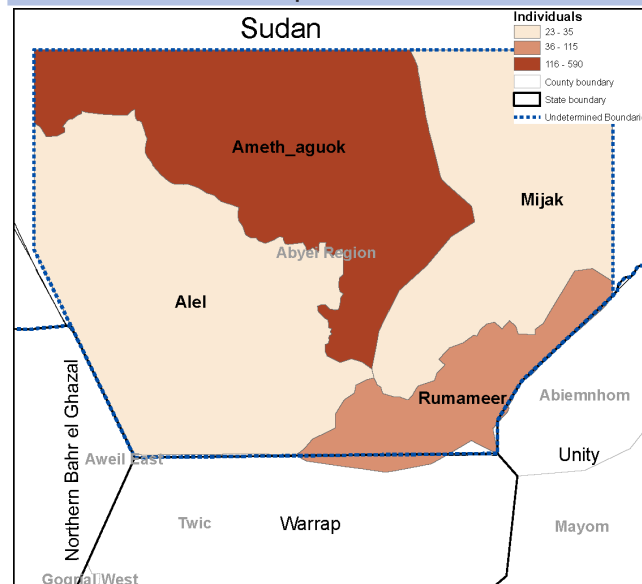


### Vulnerability



Percentage calculated based on the overall population

### Number of individuals per area of habitual residence



The administrative boundaries and names shown and the designations used on this map do not imply official endorsement or acceptance by the IOM. Final boundary between the Republic of Sudan and the Republic of South Sudan has not been determined. Final status of Abyei area is not yet determined.

For further information, contact

[southsudandtm@iom.int](mailto:southsudandtm@iom.int)

<https://displacement.iom.int/south-sudan>

DTM is Supported by:

