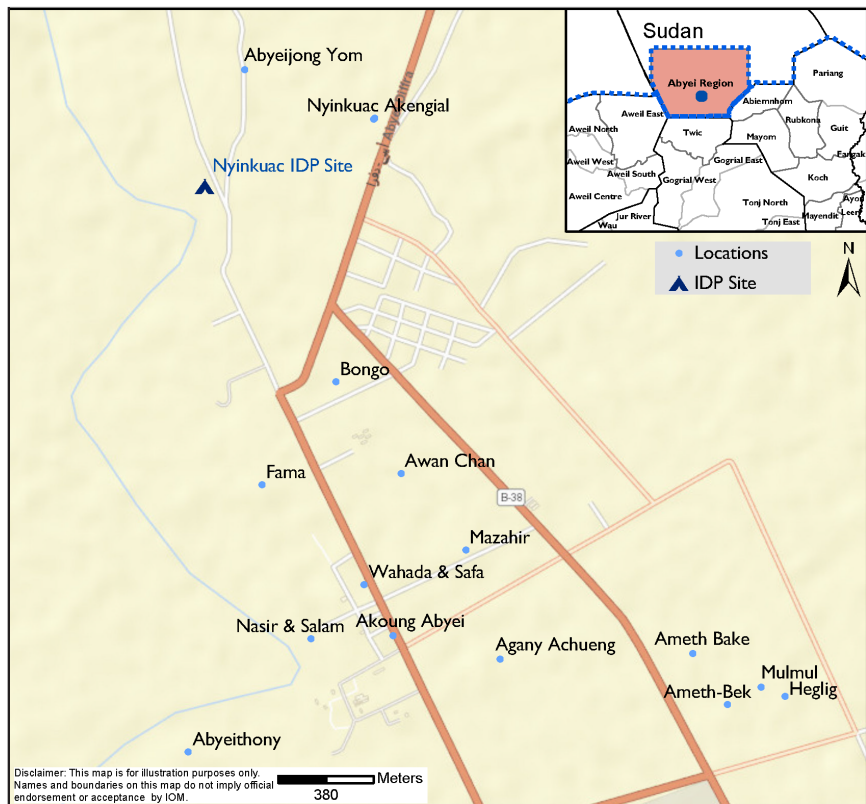


Nyinkuac IDP Site Map Overview

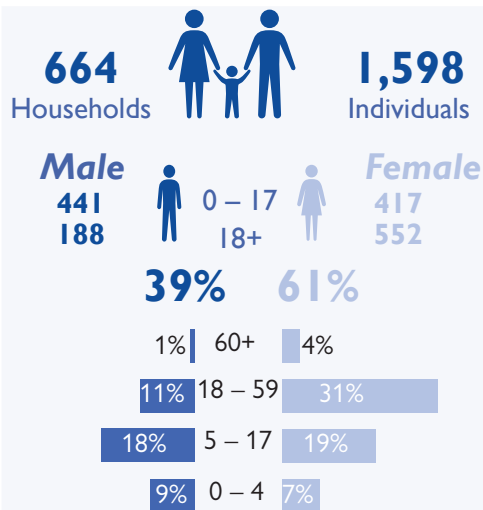


Aneet Town in Abyei Administrative Area (AAA) experienced rounds of land induced conflict in February 2022. This led to displacement of people to Comboni Primary school, who were later asked to vacate the facility as schools resumed. On 26 May 2022, Nyinkuac IDP site was formed to accommodate the displaced persons.

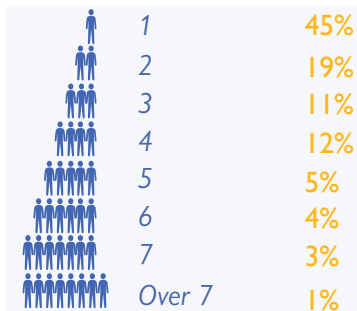
The International Organization for Migration's Displacement Tracking Matrix (IOM DTM) in South Sudan maintains biometric registration database of IDPs in displacement sites. DTM carried out its first registration at Nyinkuac IDP site starting end of August to and finished early September 2022. During the registration a total of **1,598** individuals belonging to **664** households where registered.

Forty-two per cent of the registered population were between 18 and 59 years of age, among which 31 per cent were female. The general overview of the registration shows that 61 per cent of the total population were females while 39 per cent were male. Among the recorded household sizes, individuals with household size one were most dominant (45%), followed by household size 2 (19%). In the category of vulnerabilities, six per cent breastfeeding mothers were registered representing the most vulnerabilities among the displaced population in the site.

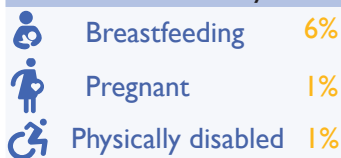
Population Profile



Households size

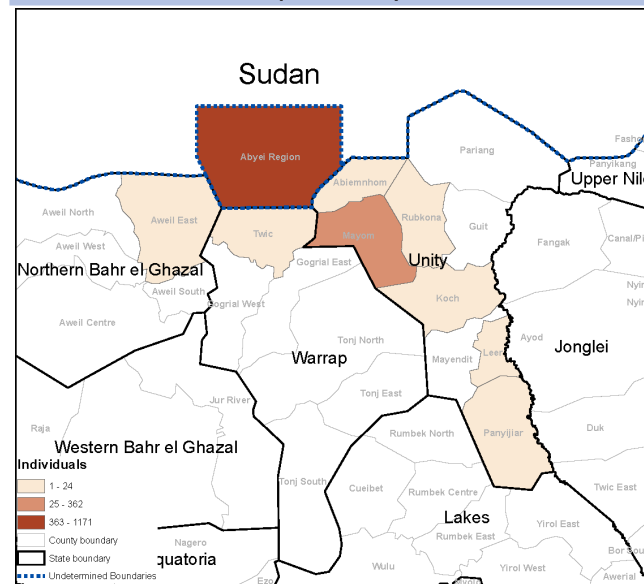


Vulnerability



Percentage calculated based on the overall population

Number of individuals per county of habitual residence



The administrative boundaries and names shown and the designations used on this map do not imply official endorsement or acceptance by the IOM. Final boundary between the Republic of Sudan and the Republic of South Sudan has not been determined. Final status of Abyei area is not yet determined.

For further information, contact

southsudandtm@iom.int

<https://displacement.iom.int/south-sudan>

DTM is Supported by:



Funded by
European Union
Humanitarian Aid



UKaid
from the British people