

EMERGENCY EVENT TRACKING

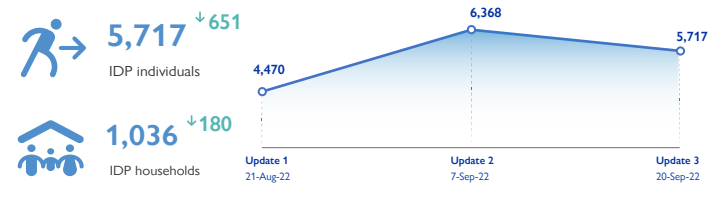
Data collection: 20 September 2022

Flooding



As a subcomponent of the Mobility Tracking methodology (Round Four), the Emergency Event Tracking (EET) tool is deployed to track sudden displacement, provide more frequent updates on the scale of displacement, and quantify the affected population when needed

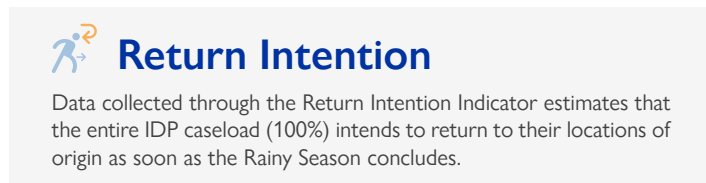
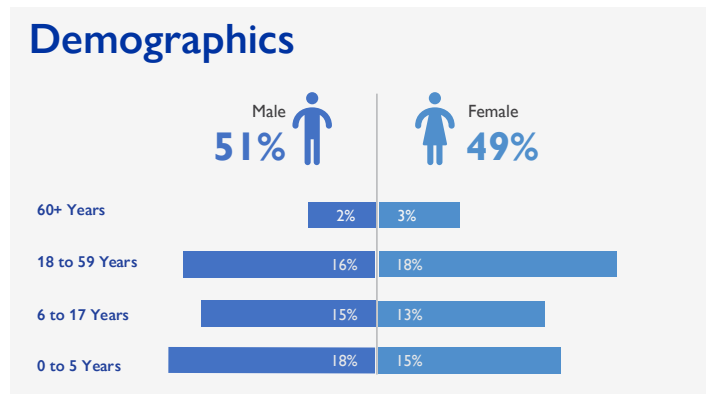
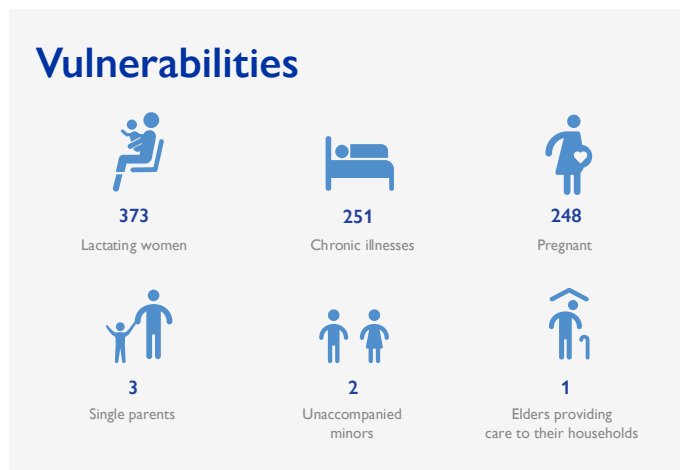
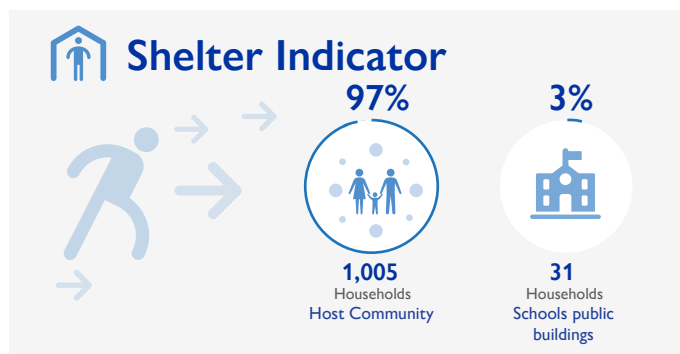
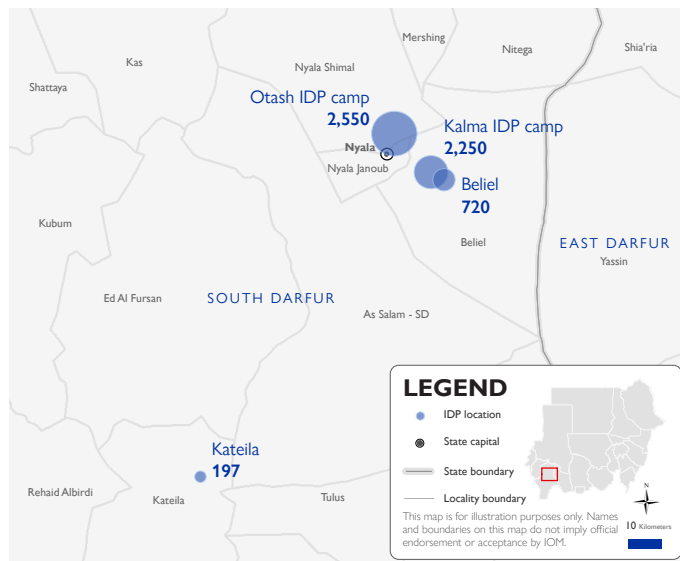
Event Overview



DTM teams activated EET to monitor the displacement of individuals affected by heavy rains and flooding in locations across several localities in South Darfur on 10 and 13 August 2022. For more information, please see [Beliel, Kateila, and Nyala Shamal, South Darfur \(Update 002\)](#).

The third EET update estimates that a total number of 5,717 individuals (1,036 households) are currently displaced in Otash (45%) IDP camp in Nyala Shamal locality, Kalma IDP camp (39%) and Beliel (13%) in Beliel locality, and Kateila IDP camp (3%) in Kateila locality, South Darfur. Field teams indicate that the fall in the IDP caseload from the previous update is a result of some IDP households returning to their locations of origin. IDPs were originally displaced from Otash IDP camp (45%) in Nyala Shamal locality, Kalma IDP camp (39%) and Beliel Town (13%) in Beliel locality, and Kateila Northern IDP camp (3%) in Kateila locality, South Darfur. Field teams highlight that IDPs across Beliel and Nyala Shamal localities have sought refuge with relatives and neighbours near to their locations of origin. In Kateila locality, IDPs have been sheltered in Kateila high school by local authorities.

DTM field teams have confirmed that two individuals were killed, and seven individuals have sustained injuries. Additionally, there are 301 reported cases of lost goods, livestock, and/or cattle. All displaced individuals are Sudanese nationals. At least 878 cases of additional vulnerabilities in need of assistance and support were identified by key informants through DTM's Protection Indicator. Additionally, DTM Sudan estimates that there are approximately 858 persons with disabilities among the IDP caseload.* Based on a ranking scale, and the three priority needs across the caseload are Emergency Shelter, Food, and Non-Food Items.



IOM DISCLAIMER
 The opinions expressed in the report are those of the authors and do not necessarily reflect the views of the International Organization for Migration (IOM). The designations employed and the presentation of material throughout the report do not imply the expression of any opinion whatsoever on the part of IOM concerning the legal status of any country, territory, city or area, or of its authorities, or concerning its frontiers or boundaries.
 IOM is committed to the principle that humane and orderly migration benefits migrants and society. As an intergovernmental organization, IOM acts with its partners in the international community to: assist in the meeting of operational challenges of migration; advance understanding of migration issues; encourage social and economic development through migration; and uphold the human dignity and well-being of migrants.

* DTM Sudan adopts the WHO global estimate that approximately 15% of the total population are persons with disabilities (PwDs).