



IOM's Displacement Tracking Matrix (DTM) continued conducting Displacement Site Flow Monitoring (DSFM) at the gates of Wau Masna Collective Centre. In the first quarter of 2022, 2,077 interviews were conducted representing 3,073 individual movements into / out of the collective centre. This reflects a 5 per cent decrease in the general trend of movement into / out of the centre. Day movements were mostly by male individuals (69%) and decreased by 11 per cent in comparison with the previous quarter. Common reasons for day movements were to make / sell charcoal (25%), collect firewood or elephant grass (18%), visit friends or family (14%) and tend to other livelihood activities (10%). Temporary movements saw a high increase of 80 per cent compared to the previous quarter, with main reasons of movement being attempts to return home (42%), food distribution (9%) and religious services (6%). Thirty-eight per cent of these individuals intend to spend more than 6 months at locations of destination. The number of surveyed new arrivals decreased from 20 (in the last quarter of 2021) to 15 individuals in the first quarter of 2022. The major drivers of people into Masna Collective Centre are hunger due to conflict (40%) and access to general healthcare services (34%). Most individuals intend to stay for more than 6 months in the collective centre. DTM enumerators did not encounter individuals who intend to permanently exit the centre.

### Methodology:

Displacement Site Flow Monitoring (DSFM) involves interviewing a cross-section of persons passing through the site's entry and exit points. DTM aims to provide partners with a better understanding of mobility dynamics into and out of the sites categorized as same-day movement, temporary (overnight) travel, new entries and (intended) permanent exits. Interviews are conducted seven days a week from 8 a.m. to 5 p.m. DSFM provides indicative traveller profiles rather than comprehensive or representative estimates.

### March Population Count

3,053 ind. (726 households)

1,453 (48%) Male

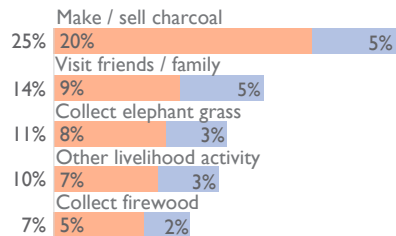
1,600 (52%) Female

#### Same-Day Travel n = 2,809



Most common reason: Make / sell charcoal

#### Top reasons for same day movement



Reasons continued: Health services (5%), farming/fishing (4%), religious service (4%), access to cash (4%), education (4%), check on/ repair property (3%), and other (4%).

#### Daily gate count

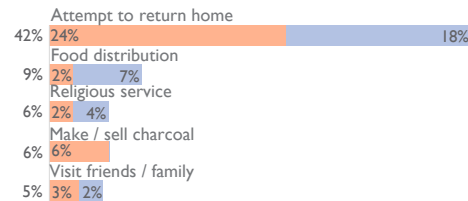
Gate count is not being conducted at Wau Masna Collective Centre.

#### Temporary Travel n = 249



Most common reason: Attempt to return home

#### Top reasons for temporary movement



Reasons continued: Farming/fishing (5%), access to cash (4%), education (4%) collect elephant grass (4%), other livelihood activity (3%), health services (3%), check on/repair property (2%), collect firewood (2%) and others (4%).

#### Intended period of stay / time spent away

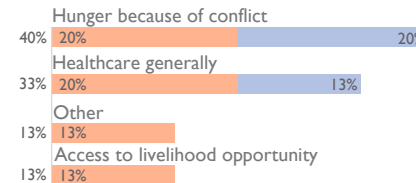


#### New Arrivals n = 15



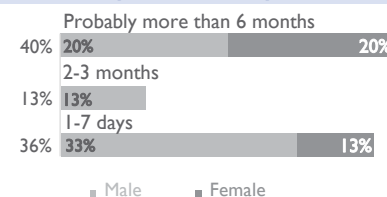
Most common reason: Hunger because of conflict

#### Top reasons for new arrival



No other reasons were recorded.

#### Intended period of stay at the centre



#### Permanent Exits n = 0

DTM enumerators did not record individuals who intended to permanently exit Masna Collective Centre during the data collection exercise for the first quarter of 2022.

#### Interviews at Wau Masna Collective Centre

Travel Category	Number of Interviews
Day movement	1,990
Embarking on temporary journey	44
New entry	7
Return from temporary travel	36

#### Type & top destinations of permanent exit

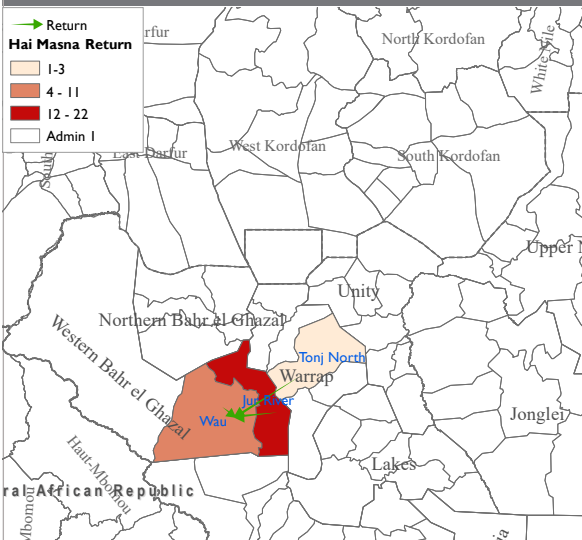
Type of Destination	% of permanent exit	Main location by nature of destination
Former area but new home	-	-
New home, different area	-	-
Former area but new home	-	-
Other displacement site	-	-



## Movement Dynamics

### Return from temporary travel

n = 79

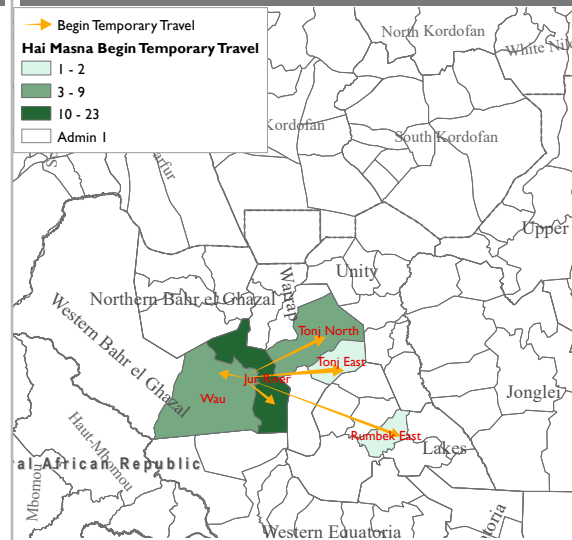


#### Counties of departure

Jur River	52%
Wau	37%
Tonj North	11%

### Embarking on temporary journey

n = 170



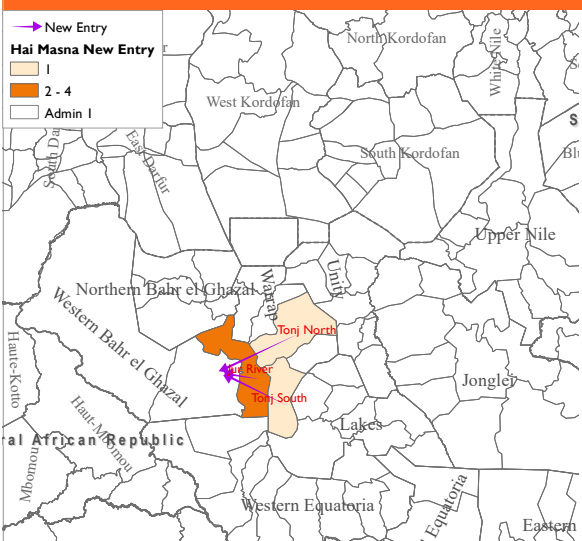
#### Counties of intended destination

Jur River	50%
Tonj North	21%
Wau	20%
Rumbek East	5%
Tonj East	4%

The maps above do not include same-day travel, which tends to be limited to the immediate surroundings of the site.

### New arrivals

n = 15



#### Counties of departure

Jur River	47%
Tonj South	27%
Tonj North	13%
Other	13%

### Permanent exits

n = 0

DTM enumerators did not record individuals who intended to permanently exit Masna Collective Centre during the data collection exercise for the first quarter of 2022.