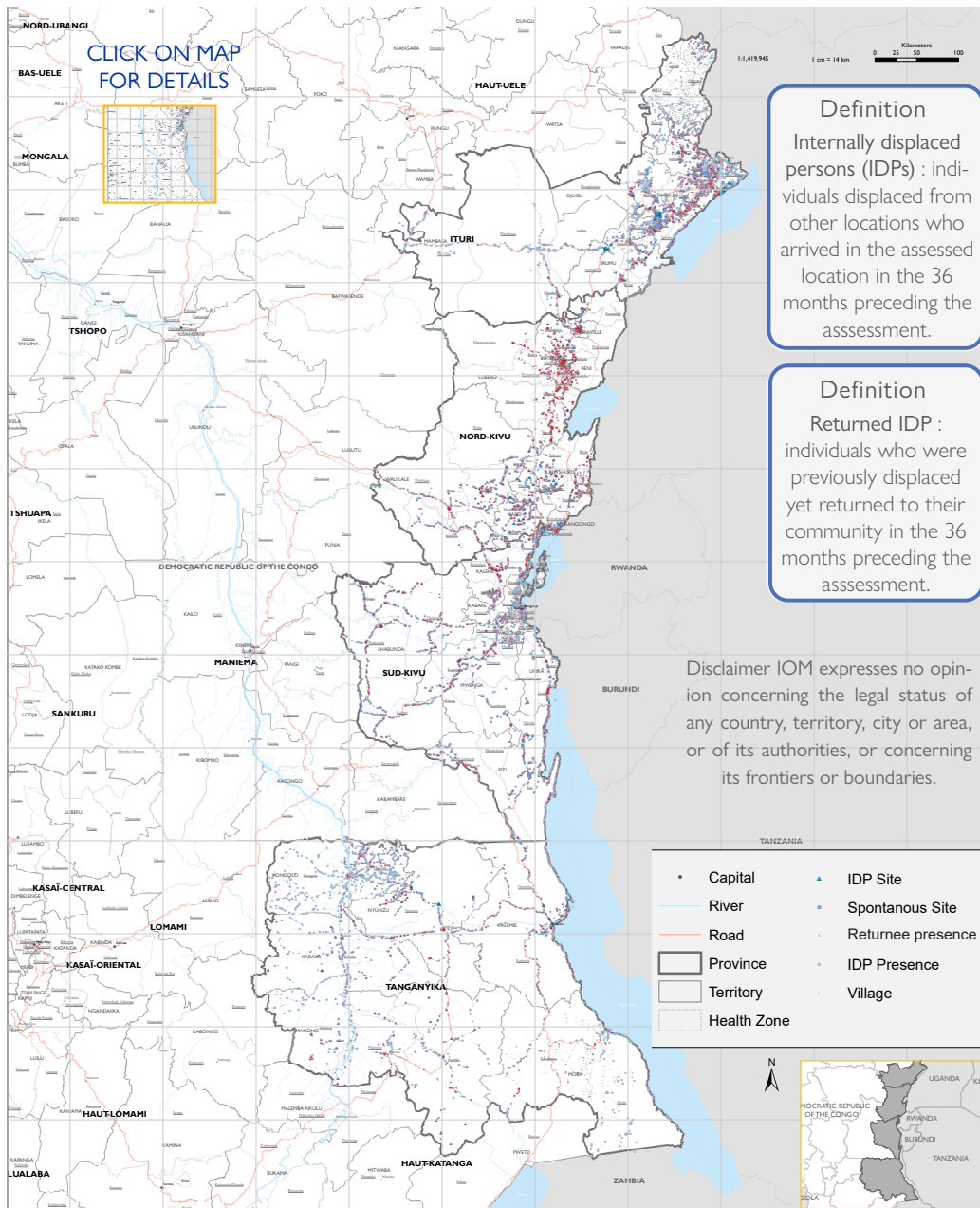


AUGUST 2022

OVERVIEW : Ituri, North Kivu, South Kivu and Tanganyika provinces




 **5,164,821**
Internally displaced persons (IDPs)

 **3,291,428**
IDP returnees

 **19,939**
Locations assessed
84% coverage

 **58,351**
Key informants

 **18.5%**
of the population are displaced

 **383,526**
IDPs residing in sites managed under the CCCM mechanism

 **126,140**
IDPs residing in unmanaged sites or collective centres

IDP AND RETURNEE FIGURES

Province	Status	Households (HH)	Individuals	Assessed locations	Total Population*
ITURI	IDPs	407,267	2,001,284	5,114	6,876,543
	Returnees	210,001	1,052,734		
NORTH KIVU	IDPs	308,444	1,578,424	5,168	10,755,949
	Returnees	228,207	1,223,435		
SOUTH KIVU	IDPs	240,811	1,255,056	4,887	7,104,949
	Returnees	132,079	711,926		
TANGANYIKA	IDPs	62,828	330,057	4,770	3,158,328
	Returnees	61,081	303,333		

* Population estimates come from the Provincial Health Divisions (DPS). population estimates for Tanganyika and Ituri are updated for 2022, and date back to 2021 for North Kivu and South Kivu.

The Democratic Republic of the Congo continues to experience armed, inter-ethnic and intercommunal conflicts, natural disasters and disease epidemics that have created one of the world's most complex and long-standing crises. The continuing threat of violence and insecurity, particularly in the Eastern provinces, alongside the recent resurgence of armed conflict and intercommunal violence in North Kivu and Ituri provinces has led to a substantial increase in population displacement over the past year. In addition, millions of people are at risk and thousands more are affected by new outbreaks of cholera and COVID-19. The situation shows no signs of easing in the near future and is likely to deteriorate in the coming months with rising tensions in the region, as well as the upcoming electoral process that is likely to have a negative impact on the security situation.

Given the need for accurate and authoritatively approved information, IOM - through the Displacement Tracking Matrix (DTM) - has conducted Mobility Tracking (MT) assessments since 2018. These exercises are implemented in Ituri, North and South Kivu, and Tanganyika provinces with the objective of providing estimates on the presence, number of affected population groups (IDPs, returnees), reasons for displacement, length of displacement and specific needs within defined locations. Data from the MT exercise are collected on a bi-annual basis by teams of trained data enumerators through key informant interviews and through direct observations at the village level. As part of this process IOM ensures the participation of government representatives during the data collection to promote ownership of the data. Thereafter, IOM data are presented and validated by the provincial Commission for Population Movement (or *Commission de Mouvement de Population* or "CMP" in French). The summary statistics presented in this report are pulled from the latest Mobility Tracking rounds for each province which took place between April and May 2022 to produce an aggregated overview of the displacement situation in the eastern region of DRC (click for MT reports for [Ituri](#), [North Kivu](#), [South Kivu](#) and [Tanganyika](#)).

In the four Eastern provinces of the Democratic Republic of the Congo (DRC), which includes Ituri, North Kivu, South Kivu and Tanganyika provinces, DTM identified **5,164,821** internally displaced persons (IDPs) and **3,291,428** returnees as of May 2022, present in **64 per cent** of the assessed villages. Overall IDP figures are as follows: with 39 per cent of IDPs (2,001,284 individuals) located in Ituri, followed by 31 per cent (1,578,424) in North Kivu, 24 per cent (1,255,056) in South Kivu and 6 per cent (330,057) in Tanganyika.

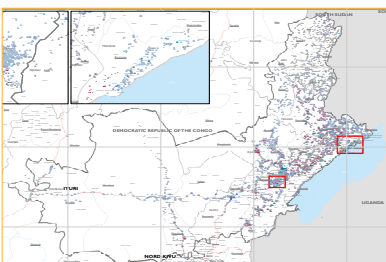
IDPs IN HOST COMMUNITIES: Among the total number of IDPs reported, 90 per cent live in host communities. DTM identified **4,655,155** IDPs (904,855 households) in **12,784 host communities** across a total of 19,939 villages assessed. The vast majority of communities (11,778 villages or 92% of those with IDPs) in eastern DRC generally host smaller numbers of IDPs at a time, up to 1,000 individuals in each village. This accounts for over half of the IDP population (3,063,600 or 66%). Conversely, over a third of IDPs (1,588,651 individuals or 34%) live in 5 per cent (1,001) of villages with an IDP population of over a thousand.

IDPs IN SITES: A total of **509,666** individuals were identified across **220 sites and collective centres**, of which 74 per cent of IDPs (383,526 individuals or 89,763 households) reside in the **105 sites managed under the CCCM mechanism** and 24 per cent (126,140 individuals or 24,732 households) reside in the other 100 sites or collective centres which are not managed. While IDPs in host communities have an average of five members per household, families in sites were on average smaller with four members per household. The proportion of IDPs living in sites is greatest in Ituri (15% of IDPs in the province, or 304,245 individuals), Tanganyika (9% or 32,122) and North Kivu (9% or 141,470).

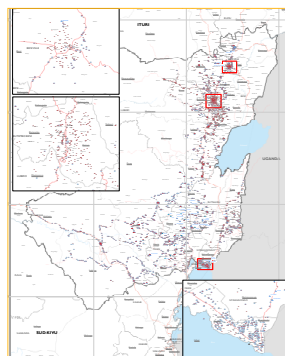
RETURNED IDPs: DTM found returnees in 34 per cent of the locations (7,599 villages) assessed. The number of returnees is greatest in North Kivu (1,223,435 individuals, or 11% of the provincial population), followed by Ituri (1,052,734 or 15%), South Kivu (711,926 or 10%) and Tanganyika (303,033 or 10%).

PROVINCIAL LEVEL MAPS OF IDP AND RETURNEE LOCATIONS

ITURI



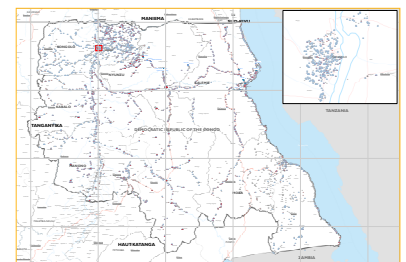
NORTH KIVU



SOUTH KIVU



TANGANYIKA



Click on any map for link to the full province, or [here](#) for all provinces

All of DTM's products are available on the site : displacement.iom.int

Province	Territory	IDPs in host families		IDPs in CCCM sites		IDPs in unmanaged sites		Returnees		Locations
		HH	Individuals	HH	Individuals	HH	Individuals	HH	Individuals	
ITURI	ARU	12,925	71,111	0	0	0	0	5,653	29,511	1,008
	DJUGU	114,698	544,001	43,049	186,106	3,493	19,418	104,730	492,505	1,692
	IRUMU*	85,435	462,484	9,411	45,415	0	0	23,829	133,550	808
	MAHAGI	94,942	493,296	12,340	35,449	3,075	15,909	65,997	344,322	1,254
	MT Report MAMBASA	28,520	126,147	363	1,868	16	80	9,792	52,846	352
*includes the city of Bunia		336,520	1,697,039	65,163	268,838	5,584	35,407	210,001	1,052,734	5,114
NORTH KIVU	BENI	44,947	229,712	0	0	900	5,060	32,076	169,305	728
	BENI City	19,876	103,996	0	0	45	271	5,874	30,253	193
	BUTEMBO	7,172	42,204	0	0	0	0	324	2,288	336
	GOMA	3,805	18,799	0	0	136	918	41,566	224,608	400
	LUBERO	35,693	204,755	0	0	0	0	29,290	171,075	1,055
	MASISI	75,904	384,114	14,248	53,447	4,589	22,897	51,734	269,852	879
	NYIRAGONGO	2,730	13,306	0	0	2,113	9,126	4,852	28,290	65
	RUTSHURU	40,058	204,303	8,046	31,561	3,374	17,104	26,608	140,055	790
MT Report WALIKALE	44,540	235,765	268	1,086	0	0	35,883	187,709	722	
		274,725	1,436,954	22,562	86,094	11,157	55,376	228,207	1,223,435	5,168
SOUTH KIVU	BUKAVU	841	4,333	0	0	0	0	708	3,857	314
	FIZI	66,859	339,793	0	0	1,636	9,364	35,845	194,586	662
	IDJWI	362	1,747	0	0	0	0	24	67	82
	KABARE	3,007	13,686	0	0	0	0	293	1,105	598
	KALEHE	67,529	375,347	0	0	847	3,836	41,783	240,454	665
	MWENGA	32,313	163,843	0	0	21	109	13,052	64,251	589
	SHABUNDA	31,565	173,442	0	0	0	0	30,215	158,008	731
	UVIRA	19,911	94,446	0	0	4,630	18,520	5,255	23,964	518
	MT Report WALUNGU	11,291	56,590	0	0	0	0	4,904	25,634	728
		233,677	1,223,227	0	0	7,134	31,829	132,079	711,926	4,887
TANGANYIKA	KABALO	3,665	18,593	0	0	0	0	6,717	34,553	465
	KALEMIE	13,686	62,458	8,735	23,825	300	1,500	20,782	100,878	591
	KONGOLO	14,210	74,356	0	0	0	0	8,441	43,606	1,272
	MANONO	8,008	39,722	0	0	0	0	8,662	43,180	967
	MOBA	3,294	17,585	0	0	0	0	2,901	16,109	802
	MT Report NYUNZU	17,070	85,221	2,038	4,769	557	2,028	13,578	65,007	673
		59,933	297,935	10,773	28,594	857	3,528	61,081	303,333	4,770

IOM has a zero tolerance policy towards sexual exploitation and abuse. Report fraud or misconduct (sexual exploitation and abuse) in a confidential manner:
49 55 55 or through the site <https://weareallin.iom.int>

Write to DTM



DTM activities in Eastern DRC are supported by:



USAID
FROM THE AMERICAN PEOPLE