



Affected Population:
1,209 Individuals



Damaged Shelters:
4



Casualties:
35

Movement Trigger:
Attacks/Floods

OVERVIEW

On 01 September, 32 individuals from Ortese camp in Guma LGA were displaced to New Old Market camp in Makurdi LGA of Benue State due to fear of attack.

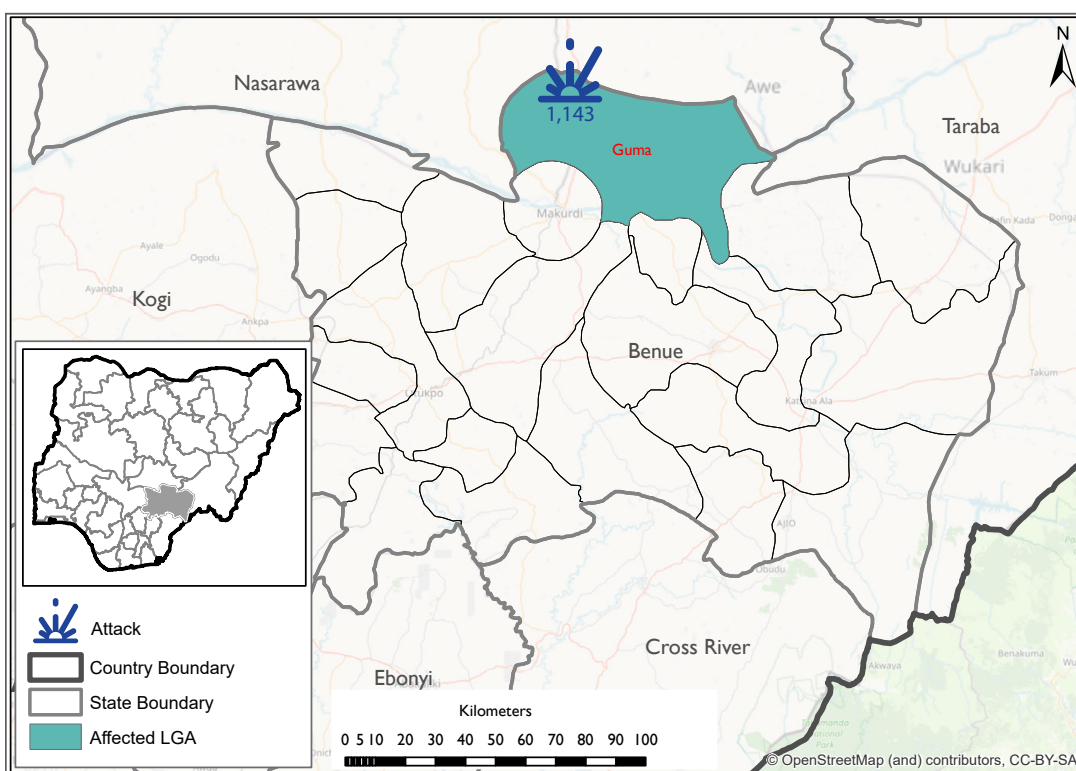
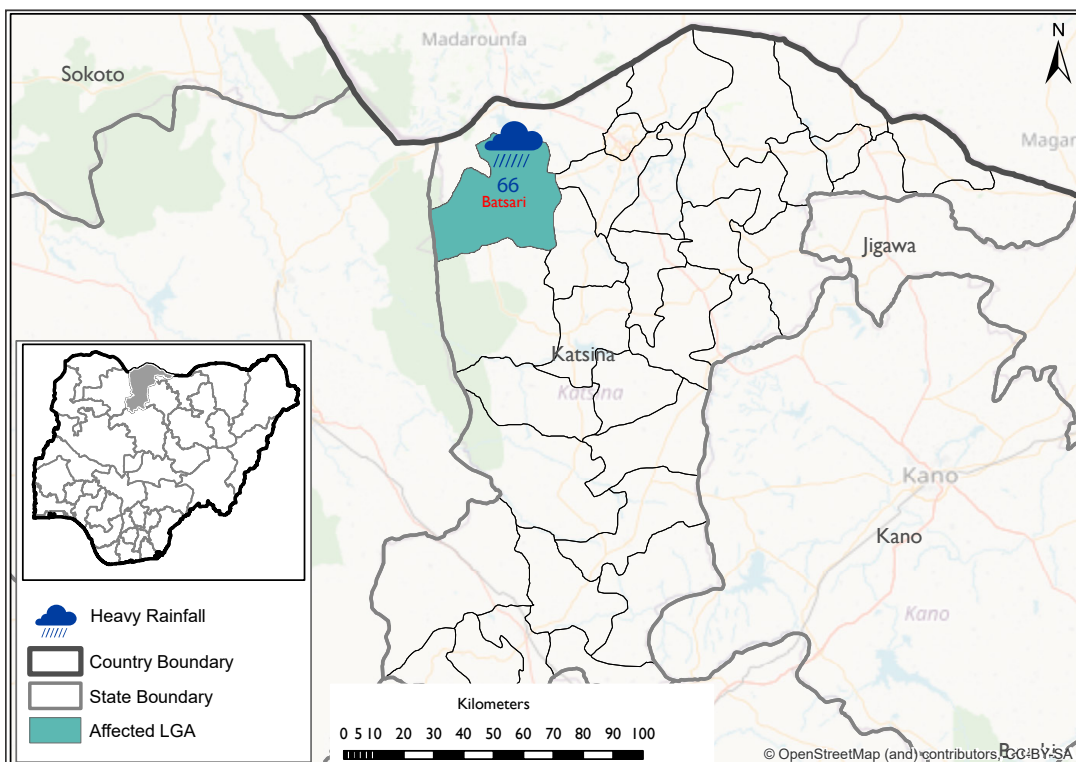
On 08 September, armed herders reportedly attacked Tse-Pevkyaa and Ortese communities in Nyiev ward and Yogbo community in Mbayer/Yendeve ward of Guma LGA in Benue state. These attacks affected 1,111 individuals and led to the displacement of 1,103 individuals to Daudu host community in Mbawa Council ward of Guma LGA of Benue state. Eight fatalities and 27 injuries were reported.

On 09 September, flood caused by heavy rainfall was reported in the Mata Mulki community of Batsari ward of Batsari LGA in Katsina state. This affected 66 individuals and led to their displacement to neighbouring shelters.

Following these events, rapid assessments were conducted by DTM (Displacement Tracking Matrix) field staff to inform the humanitarian community and government partners to enable targeted response. Flash reports utilise direct observation and a broad network of key informants to gather representative data and collect information on the number, profile and immediate needs of affected populations.

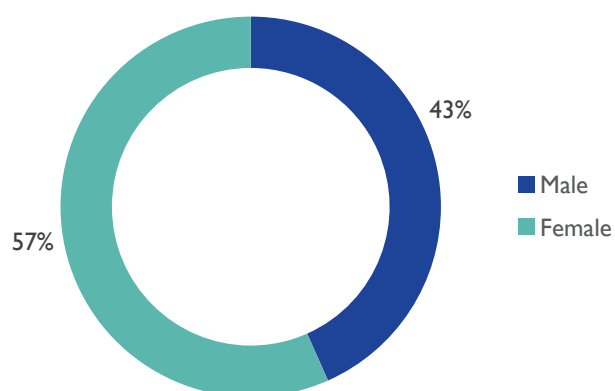
Nigeria's north-central and north-west zones are afflicted with a multi-dimensional crisis rooted in long-standing tensions between ethnic and religious groups and involves attacks by criminal groups and banditry/hirabah (such as kidnapping and grand larceny along major highways). During the past years, the crisis has accelerated because of the intensification of attacks and has resulted in widespread displacement across the region.

AFFECTED LOCATIONS

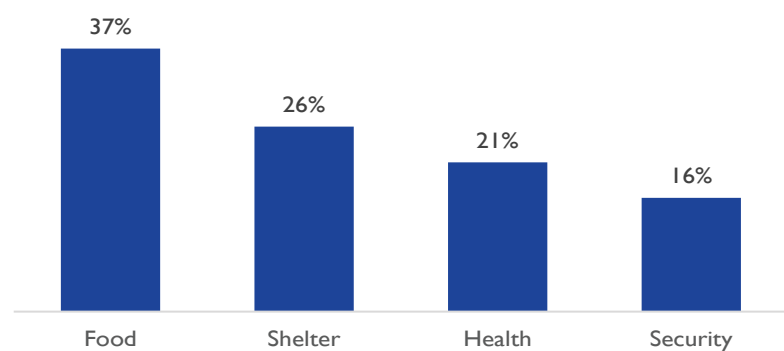


The above maps is for illustration purposes only. The depiction and use of boundaries, geographic names and related data shown are not warranted to be error-free nor do imply a judgment on the legal status of any territory, or any endorsement or acceptance of such boundaries by IOM. The above figures Stated on the map refers to the total number of individuals affected, which includes the number of displaced persons and the fatalities recorded in the affected LGAs in the north-central and north-west region of Nigeria.

GENDER TOTAL (FIG. 1)



MOST NEEDED ASSISTANCE (FIG. 2)



State	LGA	Cause of Incident	Number of Affected Households	Number of Affected Individuals	Casualties	Male	Female	Children	Number of damage shelters
Benue	Guma	Attack	367	1,143	35	494	649	455	2
Katsina	Batsari	Rainfall	12	66	0	30	36	38	2
Grand Total			379	1,209	35	524	685	493	4

"When quoting, paraphrasing, or in any other way using the information mentioned in this report, the source needs to be stated appropriately as follows: "Source: Displacement Tracking Matrix (DTM) of the International Organization for Migration (IOM), Nigeria Mission, September 2022.""