

EMERGENCY EVENT TRACKING

Data collection: 7 September 2022

Flooding



As a subcomponent of the Mobility Tracking methodology (Round Four), the Emergency Event Tracking (EET) tool is deployed to track sudden displacement, provide more frequent updates on the scale of displacement, and quantify the affected population when needed

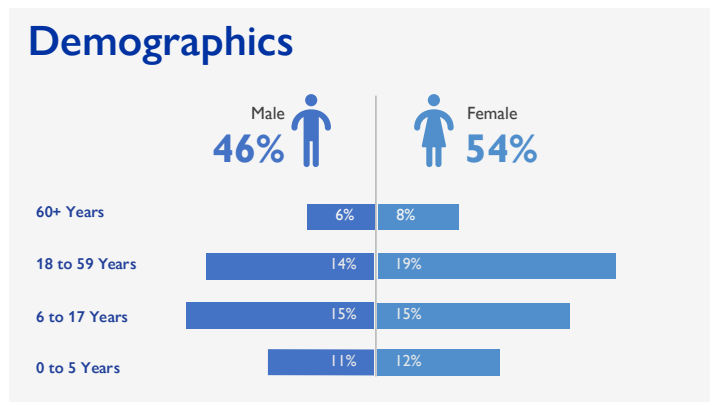
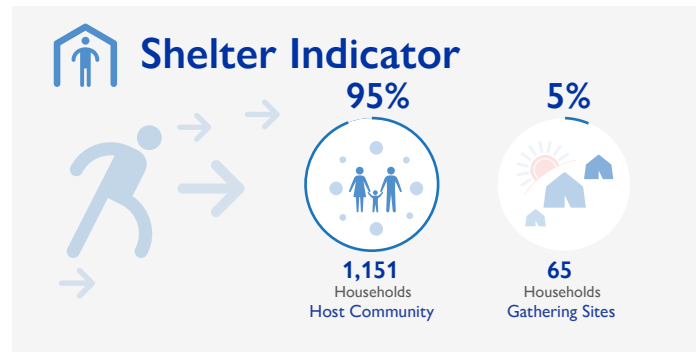
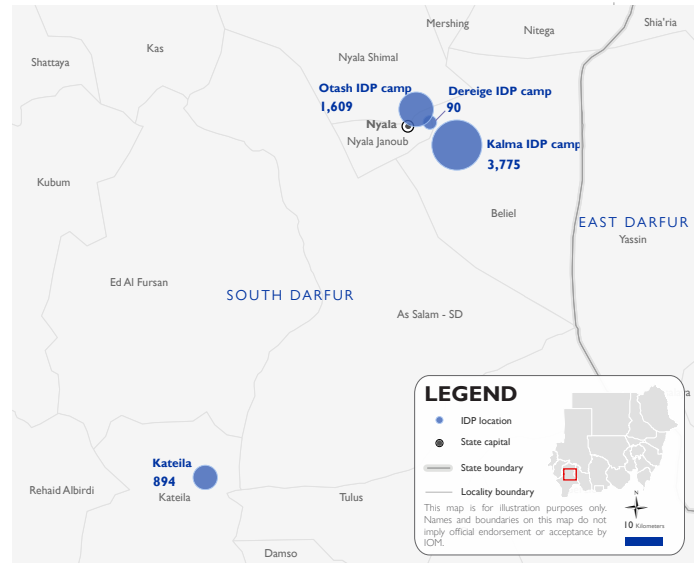
Event Overview



DTM teams activated EET to monitor the displacement of individuals affected by heavy rains and flooding in locations across several localities in South Darfur between 10 and 13 August 2022. For more information, please see [Beliel, Kateila and Nyala Shamal, South Darfur \(Update 001\)](#).

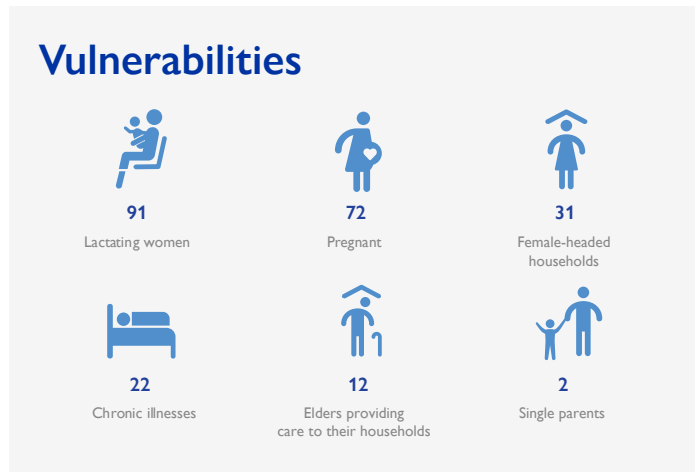
The second EET update estimates that a total number of 6,368 individuals (1,216 households) are currently displaced in Kalma IDP camp (59%) in Beliel locality, Otash (25%) and Dereige (2%) IDP camps in Nyala Shamal locality, and Kateila IDP camp (14%) in Kateila locality, South Darfur. The IDP caseload in Beliel and Nyala Shamal localities were originally displaced from locations within the area and are now seeking refuge in gathering sites and with the host community in Kalma, Dereige, and Otash IDP camps. IDPs in Kateila locality were originally displaced from Hai Shagra w Ghra, Hai At Tadamon, Hai El Salam, and Hai El Bitary in that same locality.

DTM field teams have confirmed that no individuals were killed, and six individuals have sustained injuries. Additionally, there are 1,216 reported cases of lost goods, livestock, and/or cattle. All displaced individuals are Sudanese nationals. At least 230 cases of additional vulnerabilities in need of assistance and support were identified by key informants through DTM's Protection Indicator. Additionally, DTM Sudan estimates that there are approximately 955 persons with disabilities among the IDP caseload.* Based on a ranking scale, and the three priority needs across the caseload are Emergency Shelter, Non-Food Items, and Food.



Return Intention

Data collected through the Return Intention Indicator estimates that the entire IDP caseload (100%) intends to return to their locations of origin as soon as the Rainy Season concludes. More specifically, the IDP caseload in Kateila IDP camp intend to return to their locations of origin once the flooding subsides and they receive humanitarian assistance.



IOM DISCLAIMER

The opinions expressed in the report are those of the authors and do not necessarily reflect the views of the International Organization for Migration (IOM). The designations employed and the presentation of material throughout the report do not imply the expression of any opinion whatsoever on the part of IOM concerning the legal status of any country, territory, city or area, or of its authorities, or concerning its frontiers or boundaries.

IOM is committed to the principle that humane and orderly migration benefits migrants and society. As an intergovernmental organization, IOM acts with its partners in the international community to: assist in the meeting of operational challenges of migration; advance understanding of migration issues; encourage social and economic development through migration; and uphold the human dignity and well-being of migrants.

* DTM Sudan adopts the WHO global estimate that approximately 15% of the total population are persons with disabilities (PwDs).

