



Affected Population:
9,015 Individuals



Damaged Shelters:
451



Casualties:
219

Movement Trigger:
Fear of attacks/Floods

OVERVIEW

On 26 August, flood caused by heavy rainfall was reported in Uban Doma community in Kalong ward of Shandam LGA of Plateau state. The flood affected 450 individuals, all individuals affected were displaced to neighbouring shelters.

On 29 August, floods caused by heavy rainfall were reported in the Sabon Unguwa, Kofar Arewa, and Marmara communities of Rimi ward of Rimi LGA and Lambobi Tudun Yanlafidda community of Katsina LGA, all in Katsina state. The floods affected 765 individuals in Rimi LGA and 30 individuals in Katsina LGA. These led to displacement of 795 individuals in neighbouring shelters in the communities.

On 30 and 31 August, floods caused by heavy rainfall were reported in the Kibiya community of Kibiya I ward, Shike Mai Dutse community of Kahu ward, Tarai community of Tarai ward, Tarunu community of Fammar ward and Gidan Kamfa, Unguwar Mai Kwattawa and Gidan Liman communities of Unguwar Gai ward, all in Kibiya LGA of Kano state. This affected 589 individuals and led to displacement of 584 individuals to neighbouring shelters. Five fatalities and 176 injuries were reported.

On 01 and 03 September, heavy rainstorms were reported in Leko and Mata Mulki communities of Dan Alh./Yan Gaiya ward of Batsari LGA and Danjaku of Danjaku/Karaci ward and Musawa communities in Musawa wards of Musawa LGA of Katsina state. The rainstorm affected and displaced 737 individuals to neighbouring shelters. Seven injuries were reported.

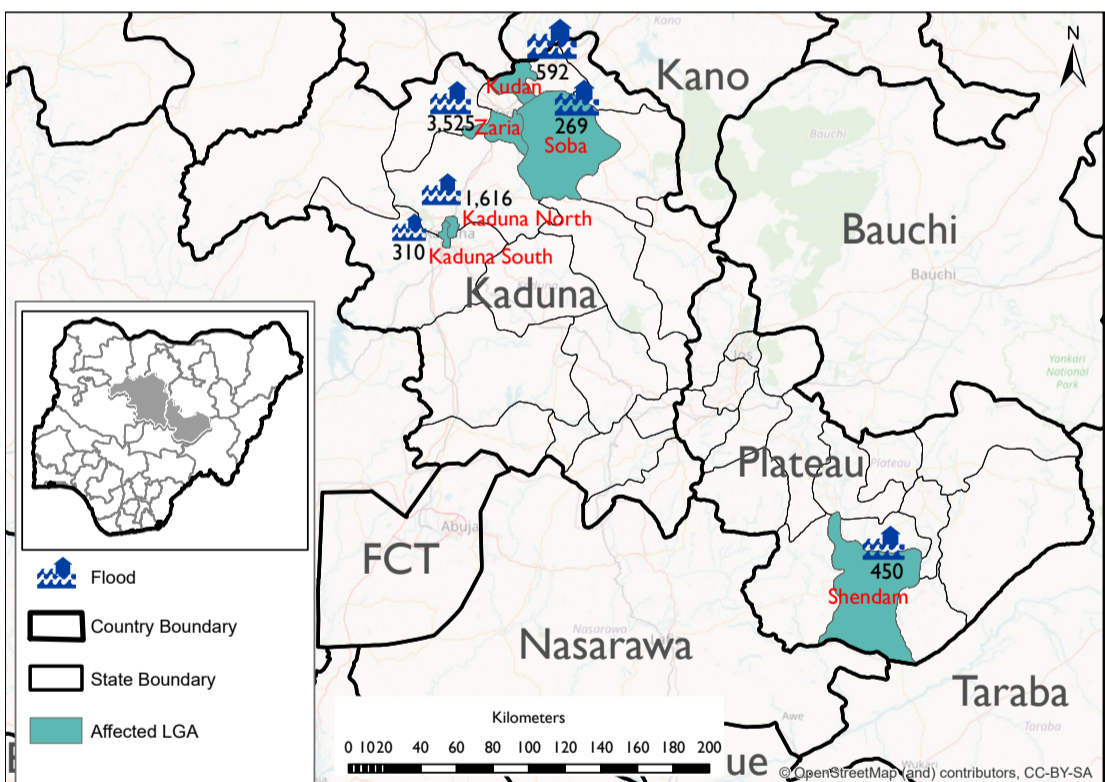
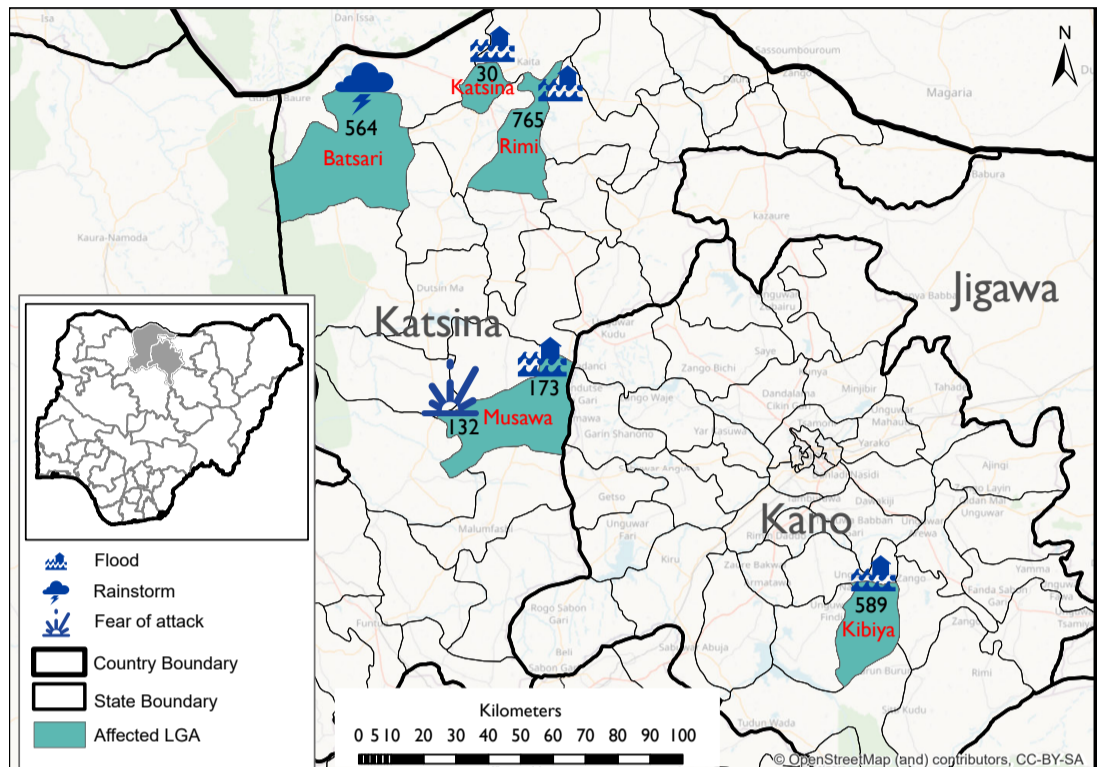
On 03 September, fear of attack led to displacement of 132 individuals from Dangani community in Dangani ward of Musawa LGA to Unguwar Amare community in Malumfashi 'B' ward of Malumfashi LGA in Katsina state.

On 04 and 05 September, floods caused by heavy rainfall were reported in Kaduna North, Kaduna South, Soba, Kudan and Zaria LGAs of Kaduna state. This affected 6,312 individuals and led to their displacement to neighbouring shelters.

Following these events, rapid assessments were conducted by DTM (Displacement Tracking Matrix) field staff to inform the humanitarian community and government partners to enable targeted response. Flash reports utilise direct observation and a broad network of key informants to gather representative data and collect information on the number, profile and immediate needs of affected populations.

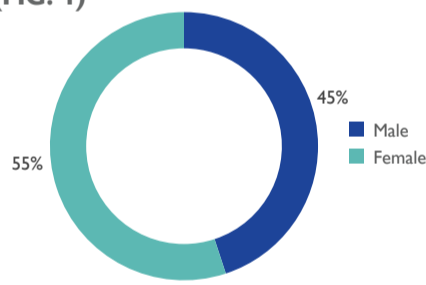
Nigeria's north-central and north-west zones are afflicted with a multi-dimensional crisis rooted in long-standing tensions between ethnic and religious groups and involves attacks by criminal groups and banditry/hirabah (such as kidnapping and grand larceny along major highways). During the past years, the crisis has accelerated because of the intensification of attacks and has resulted in widespread displacement across the region.

AFFECTED LOCATIONS

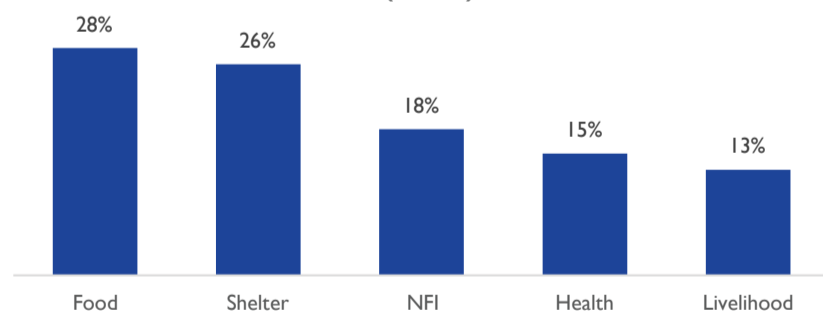


The above maps is for illustration purposes only. The depiction and use of boundaries, geographic names and related data shown are not warranted to be error-free nor do imply a judgment on the legal status of any territory, or any endorsement or acceptance of such boundaries by IOM. The above figures Stated on the map refers to the total number of individuals affected, which includes the number of displaced persons and the fatalities recorded in the affected LGAs in the north-central and north-west region of Nigeria.

GENDER TOTAL (FIG. 1)



MOST NEEDED ASSISTANCE (FIG. 2)



State	LGA	Cause of Incident	Number of Affected Households	Number of Affected Individuals	Casualties	Male	Female	Children	Number of damage shelters
Kano	Kibiya	Flood	126	589	181	271	318	279	137
Katsina	Batsari	Rainstorm	97	564	7	257	307	321	97
Katsina	Musawa	Fear of attack	25	132	0	56	76	63	0
Katsina	Katsina	Flood	6	30	0	13	17	18	5
Katsina	Musawa	Flood	34	173	0	78	95	78	34
Katsina	Rimi	Flood	115	765	31	350	415	446	115
Plateau	Shendam	Flood	63	450	0	171	279	135	63
Kaduna	Kaduna North	Flood	299	1,616	0	732	884	748	0
Kaduna	Kaduna South	Flood	62	310	0	141	169	125	0
Kaduna	Soba	Flood	42	269	0	121	148	120	0
Kaduna	Kudan	Flood	117	592	0	253	339	237	0
Kaduna	Zaria	Flood	705	3,525	0	1,609	1,916	1,491	0
Grand Total			1,691	9,015	219	4,052	4,963	4,061	451

"When quoting, paraphrasing, or in any other way using the information mentioned in this report, the source needs to be stated appropriately as follows: "Source: Displacement Tracking Matrix (DTM) of the International Organization for Migration (IOM), Nigeria Mission, September 2022.""