

As a subcomponent of the Mobility Tracking methodology (Round Four), the Emergency Event Tracking (EET) tool is deployed to track sudden displacement, provide more frequent updates on the scale of displacement, and quantify the affected population when needed.

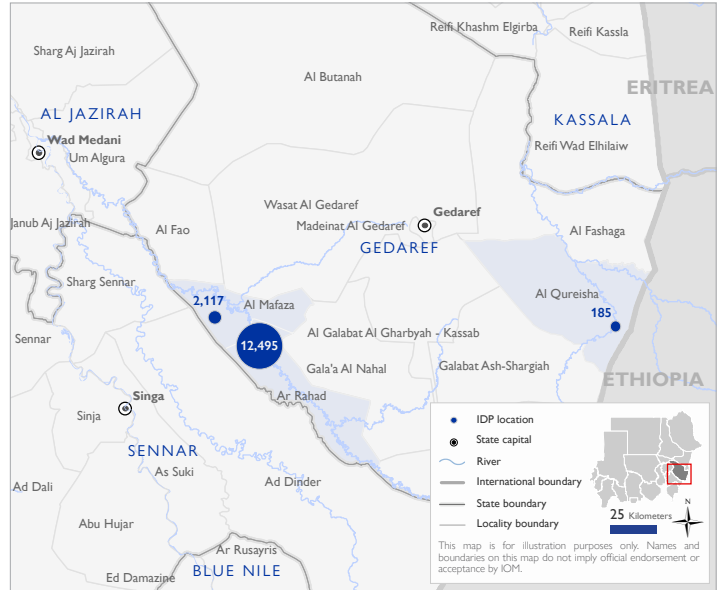
## Event Overview



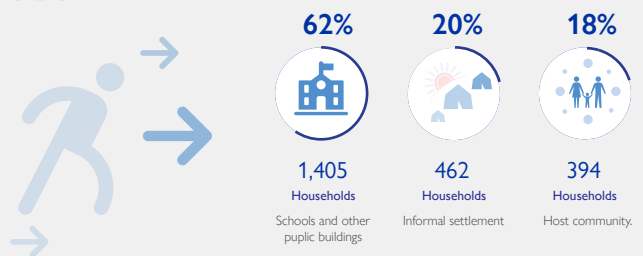
DTM teams activated EET to monitor the displacement of individuals affected by heavy rains and floods across Gedaref from 4 September 2022. The first EET update estimates that a total number of 14,797 individuals (2,261 households) were originally displaced from locations in Ar Rahad (85%), Al Mafaza (14%), and Al Qureisha (1%) localities in Gedaref state.

Field teams estimate that 5,400 IDPs (36%) were displaced from across Dabanga Town, Ar Rahad locality and are now seeking shelter in and around Dabanga School and Dabanga Health Centre. An additional estimated 2,700 IDPs (18%) were displaced from around Hejilija village, Ar Rahad locality and are now currently seeking shelter in and around Um Hejilija School. Field teams report that the remaining IDPs are either seeking shelter with relatives and neighbours or in informal open area settlements in unaffected locations near to their original sites of displacement.

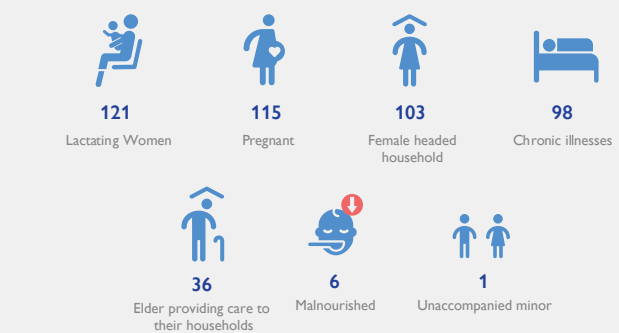
DTM field teams estimate, upon triangulation with additional sources, that no individuals were killed or injured. Additionally, there are 2,404 reported cases of lost goods, cattle, and/or livestock. All displaced individuals are Sudanese nationals. At least 480 cases of additional vulnerabilities in need of assistance and support were identified by key informants through DTM's Protection Indicator. DTM Sudan estimates that there are approximately 2,220 persons with disabilities among the IDP caseload.\* Based on a ranking scale, the three priority needs across the caseload are Emergency Shelter, Food, and Non-Food Items.



## Shelter Indicator



## Vulnerabilities

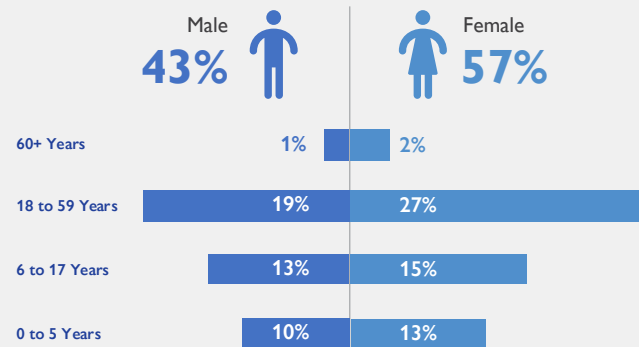


## Priority needs

Ranking scale



## Demographics



## Return Intention

Data collected through the return intention indicator estimates that the entire IDP caseload (100%) intend to return to their locations of origin after the flooding subsides.

## IOM DISCLAIMER

The opinions expressed in the report are those of the authors and do not necessarily reflect the views of the International Organization for Migration (IOM). The designations employed and the presentation of material throughout the report do not imply the expression of any opinion whatsoever on the part of IOM concerning the legal status of any country, territory, city or area, or of its authorities, or concerning its frontiers or boundaries.

IOM is committed to the principle that humane and orderly migration benefits migrants and society. As an intergovernmental organization, IOM acts with its partners in the international community to: assist in the meeting of operational challenges of migration; advance understanding of migration issues; encourage social and economic development through migration; and uphold the human dignity and well-being of migrants.

\* DTM Sudan adopts the WHO global estimate that approximately 15% of the total population are persons with disabilities (PwD).