

Fear of attacks and subsequent confirmed attacks in Ancyube, Chiure, Memba and Erati districts by Non-State Armed Groups triggered 11,837 individual displacement movements within Erati, Memba and Cidade De Nampula. An estimate of 488 Internally Displaced Persons (IDPs) have been identified with vulnerabilities. At least 99% of these movements are arrivals in Erati, less than 1% in Cidade de Nampula and Nacala.

IOM teams observed a spike of 7,907 individual movements in the daily trend on the 6th of September, 2022. (please see below charts for further information). Movements in the region remain dynamic departing from host communities.

Conflict-affected populations across Erati District are initially estimated to be as many as 38,000 Individuals/8,000 Households. However, verification of IDPs is ongoing across localities in Odinepa and Alua Posto (Erati District). Current reported estimates of 11,837 individuals may include individuals displaced by earlier attacks reported across Southern Cabo Delgado districts 2022. Records include 386 Internally Displaced Persons (IDPs) identified with vulnerabilities.

The objective of the Emergency Tracking Tool (ETT) - Movement Alert is to collect information on large and sudden population movements, and to provide support to the humanitarian response partners by disseminating data on IDPs to support effective humanitarian response to the affected population. Information is collected through key informants interviews or direct observation. This dashboard provides basic information on displacements, and additional information can be shared upon request.

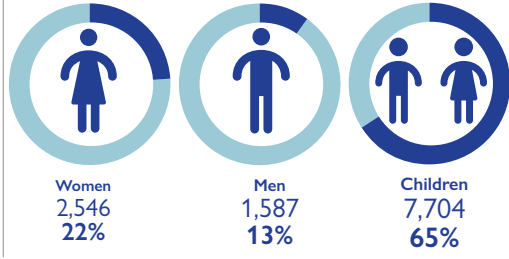
DISCLAIMER: The depiction and use of boundaries, geographic names, and related data shown on maps and included in this report are not warranted to be error free nor do they imply judgment on the legal status of any territory, endorsement or acceptance of such boundaries by IOM.

URGENT NEEDS

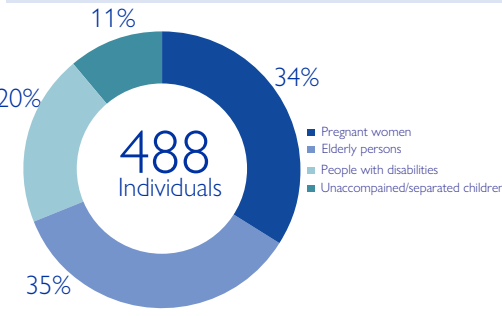


Urgent needs are calculated by weighting the total number of IDP arrivals in each group against the stated priority

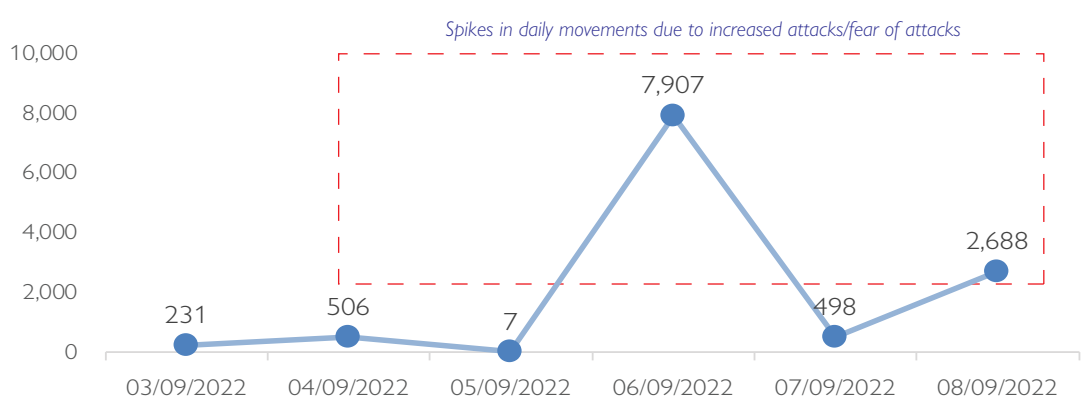
DEMOGRAPHIC PROFILE



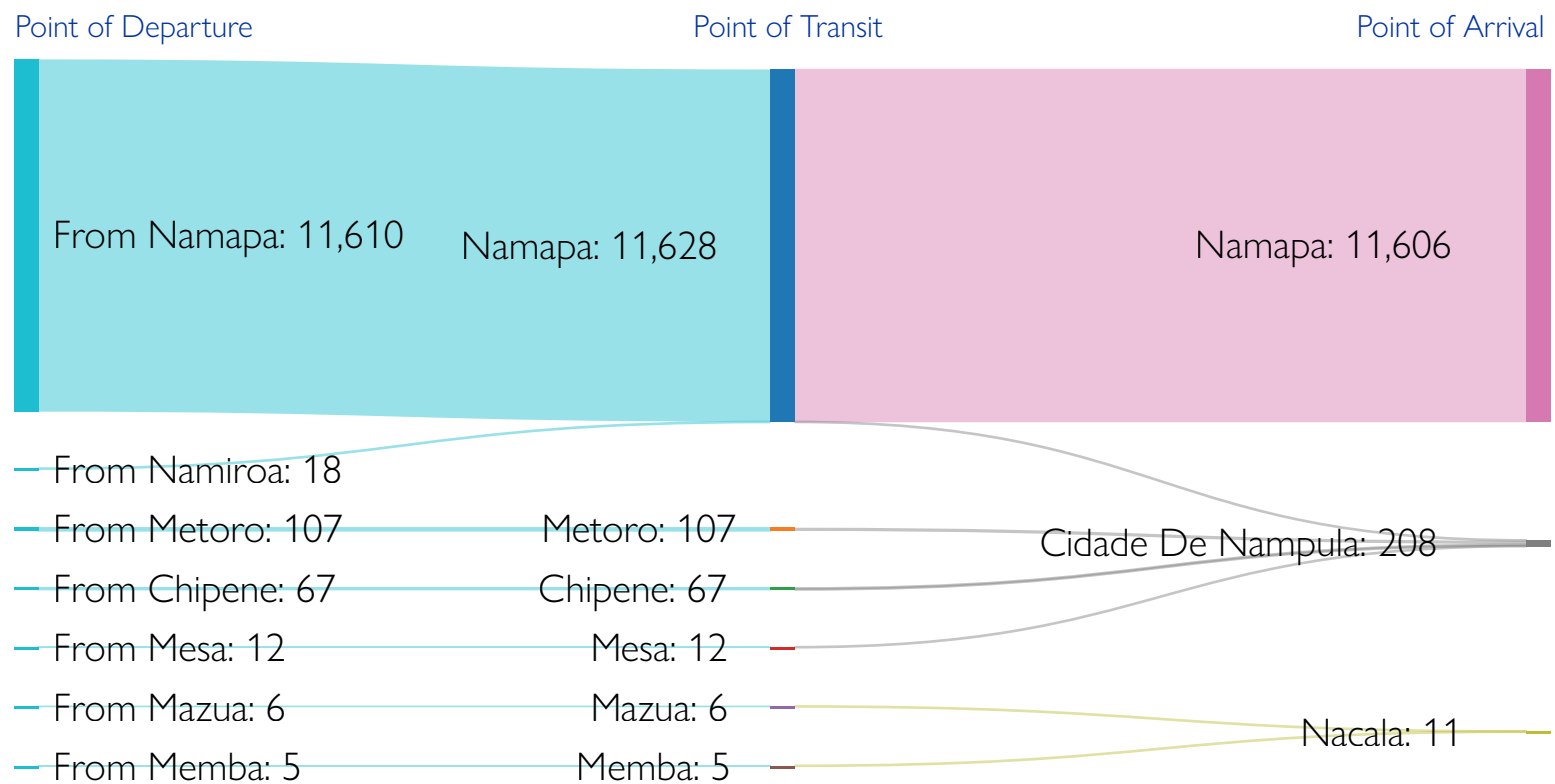
VULNERABILITIES



NUMBER OF INDIVIDUALS (3rd - 8th SEPTEMBER 2022)



MOVEMENT FLOWS (ARRIVALS AT POST LEVEL)



VULNERABILITIES (ARRIVALS AT LOCALITY LEVEL)

District/Locality	Total number of Individuals:	Total number of Households:	Unaccompanied / separated children	Pregnant women	Elderly	Person with disability	Person with chronic disease
Erati	11606	2500	50	163	154	99	0
Namapa	11,375	2,445	49	157	150	94	-
Odinepa	231	55	1	6	4	5	-
Cidade De Nampula	192	29	-	4	14	-	2
1 de Maio	38	8	-	1	6	-	-
Militar	28	3	-	2	2	-	-
Muahivire	18	1	-	-	-	-	-
Muatala	24	4	-	-	2	-	-
Muatala	30	4	-	-	-	-	-
Namicopo	13	3	-	-	2	-	-
Namicopo	7	1	-	-	-	-	-
Napipine	4	1	-	-	-	-	-
Natikir	30	4	-	1	2	-	2
Nacala	27	7	-	1	1	-	-
Muanona	21	6	-	1	1	-	-
Mutiva	6	1	-	-	-	-	-
Grand Total	11,825	2,536	50	168	169	99	2

Supported by :



Website : <https://displacement.iom.int/mozambique>

Feedback: DTMMozambique@iom.int
[@IOM_Mozambique](https://twitter.com/IOM_Mozambique)

When quoting, paraphrasing, or in any other way using the information mentioned in this report, the source needs to be stated appropriately as follows: "The International Organization for Migration September, 2022, Displacement Tracking Matrix"