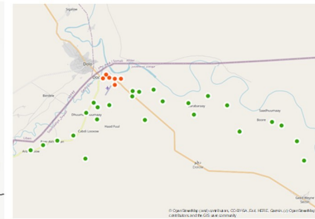
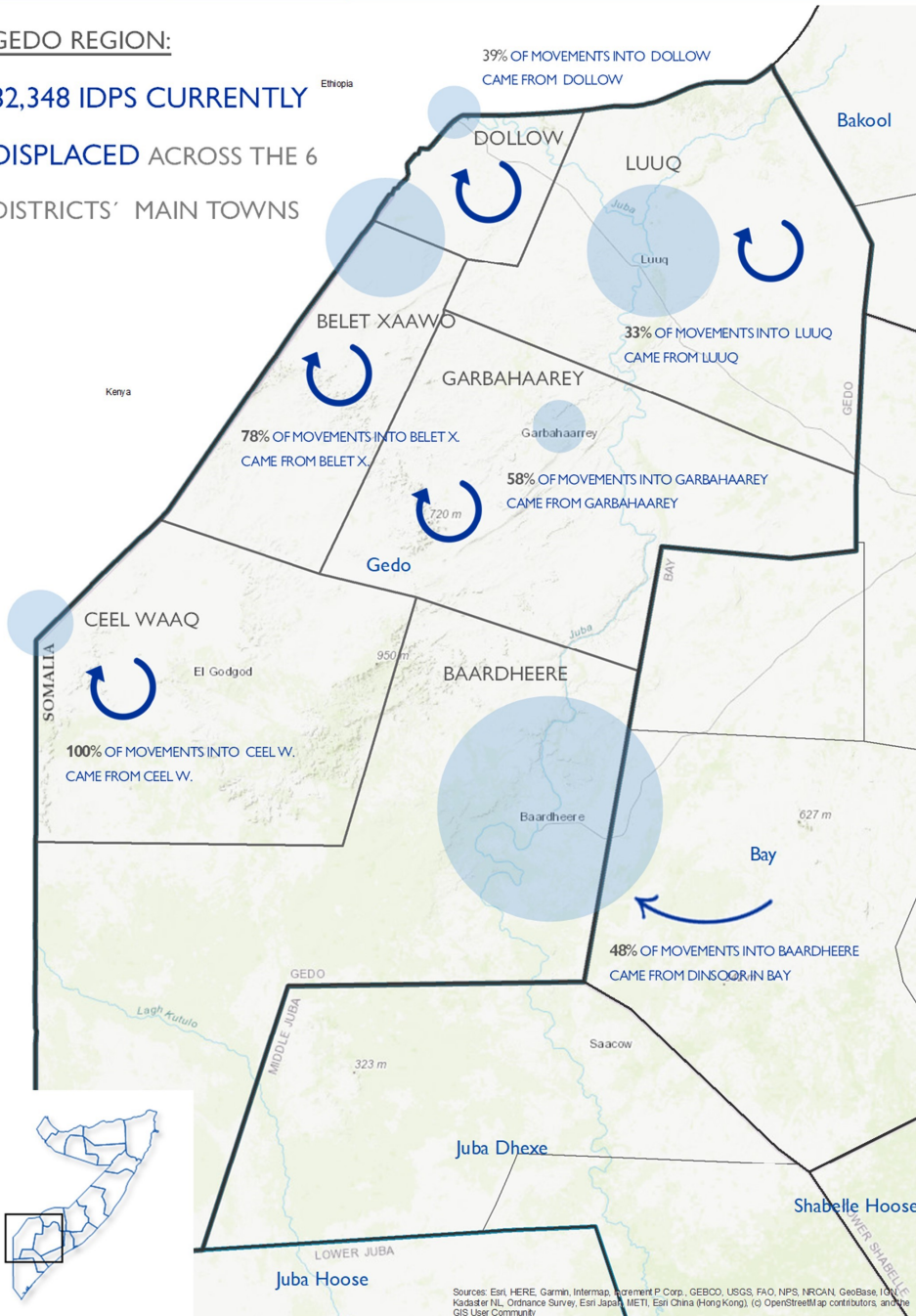


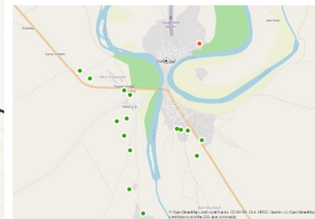
GEDO REGION:

**82,348 IDPS CURRENTLY
DISPLACED** ACROSS THE 6
DISTRICTS' MAIN TOWNS



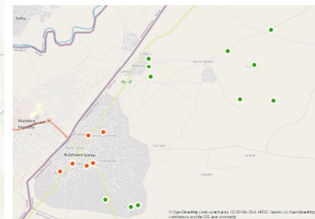
DOLLOW:

2,001 IDPS ACROSS
6 NEIGHBORHOODS AND
28 VILLAGES



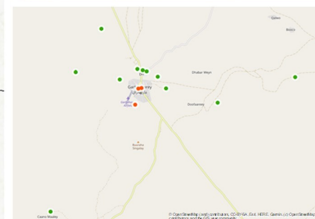
LUUQ TOWN:

22,918 IDPS ACROSS
1 NEIGHBORHOOD AND
15 VILLAGES



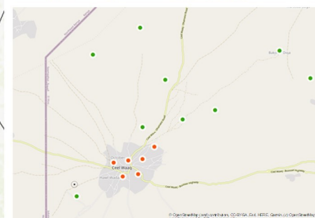
BELET XAAWO TOWN:

18,066 IDPS ACROSS
6 NEIGHBORHOODS AND
15 VILLAGES



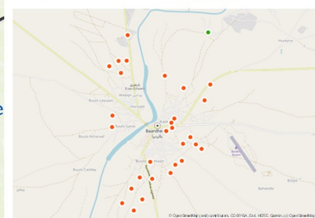
GARBAHAAREY TOWN:

399 IDPS ACROSS
3 NEIGHBORHOODS AND
11 VILLAGES



CEEL WAAQ TOWN:

4,326 IDPS ACROSS
6 NEIGHBORHOODS AND
17 VILLAGES



BAARDHEERE TOWN:

34,638 IDPS ACROSS
29 NEIGHBORHOODS AND
1 VILLAGES

POPULATION MOBILITY
KEY FINDINGS:



138

ASSESSED SETTLEMENTS



82,348

INTERNALLY DISPLACED PEOPLE



55%

MOVEMENTS WITHIN THE REGION



54%

MOVEMENTS ACROSS DISTRICTS



89%

SPONTANEOUS MOVEMENTS



68%

FIRST DISPLACEMENT



89%

TRAVEL BETWEEN 1 - 4 DAYS



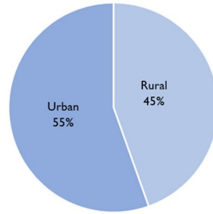
37% MOVE BY FOOT

35% MOVE BY MOTOR VEHICLE

Sources: Esri, HERE, Garmin, Intermap, increment P Corp., GEBCO, USGS, FAO, NPS, NRCAN, GeoBase, IGN, Kadaster NL, Ordnance Survey, Esri Japan, METI, Esri China (Hong Kong), (c) OpenStreetMap contributors, and the GIS User Community

SUMMARY FIGURES

District main towns	# Settlements	# IDPs
Baardheere	30	34,638
Belet Xaawo	21	18,066
Ceel Waaq	23	4,326
Doolow	34	2,001
Garbahaarey	14	399
Luuq	16	22,918
Total	138	82,348

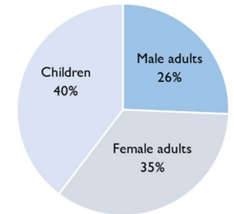


% OF IDPs IN URBAN AND RURAL SETTLEMENTS

IDPs DEMOGRAPHIC PROFILE

District main town	# IDPs	Male adults	Female adults	Children
Baardheere	34,638	8,853	11,054	14,731
Belet Xaawo	18,066	5,503	5,759	6,804
Ceel Waaq	4,326	1,658	1,802	866
Doolow	2,001	393	594	1,014
Garbahaarey	399	87	133	179
Luuq	22,918	4,633	9,210	9,075
Total	82,348	21,127	28,552	32,669

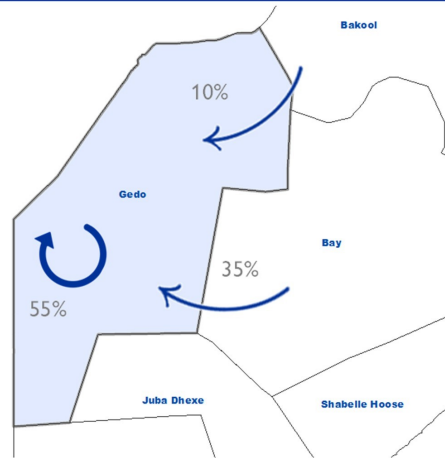
IDPs SEX AND AGE BREAKDOWN



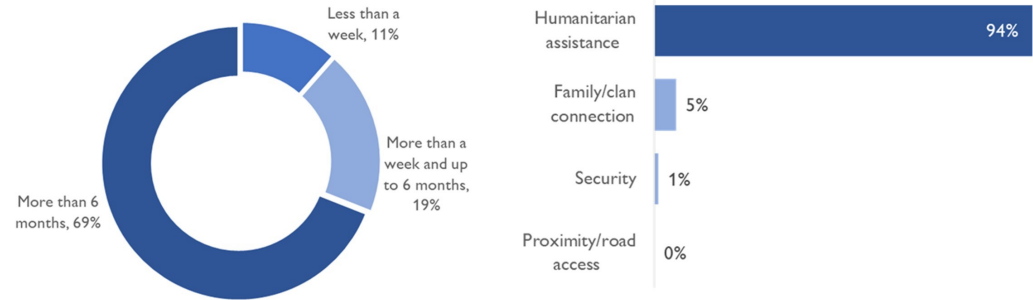
REGIONS OF ORIGIN

Region of origin	% IDPs
Gedo	55%
Bay	35%
Bakool	10%

% IDPs BY REGION OF ORIGIN

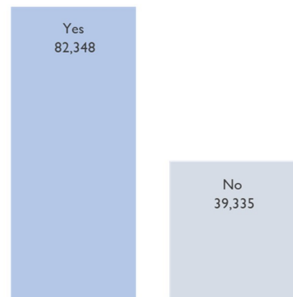


EXPECTED DISPLACEMENT DURATION AND REASON FOR DISPLACEMENT LOCATION

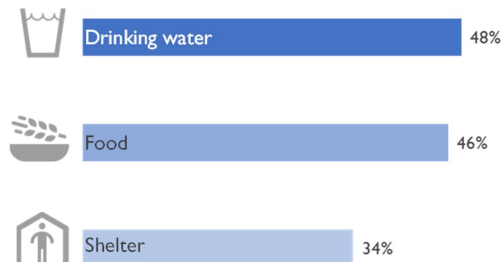


% IDPs BY DURATION OF INTENTION TO STAY IN CURRENT LOCATION AND MAIN REASON TO CHOOSE CURRENT DISPLACEMENT LOCATION

HUMANITARIAN ASSISTANCE AND NEEDS

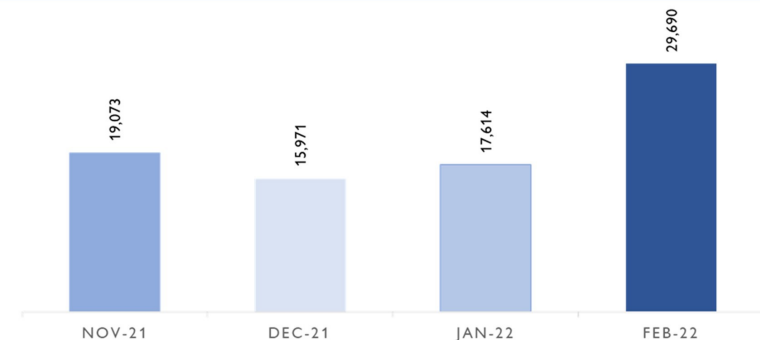


OF SETTLEMENTS REPORTING HUMANITARIAN AND/OR GOVERNMENT ACTORS PROVIDING HUMANITARIAN ASSISTANCE



% IDPs BY 3 MAIN REPORTED NEEDS IN DISPLACEMENT SETTLEMENTS

TIMELINE OF DISPLACEMENT



IDPs PER MONTH OF DISPLACEMENT

CONTEXT AND METHODOLOGY

As the drought continues to worsen with displacement increasing in Somalia DTM is piloting an Emergency Trends Tracking (ETT) tool in Gedo region to monitor displacement trends and hotspots in support of operational planning.

Three failed consecutive rainy seasons have resulted in 90% of the country experiencing severe drought conditions. OCHA reports that currently 4.3 million individuals are affected by drought. During the 2017 drought, DTM Somalia conducted a country wide ETT and the data from that period indicated the highest numbers of displaced individuals were observed in Bay, Banadir and Gedo regions. Based on this and due to IOM's operational presence in Gedo region, DTM decided to deploy an ETT pilot in Gedo region.

ETT is a crisis-based tool that tracks sudden displacement triggered by specific events or emerging crises. The objective of ETT is to identify where there are specific assessments need and to enable partners to deliver rapid assistance. Based on previous drought induced displacement patterns, the humanitarian community expects that people will move from rural to urban areas in search of humanitarian services. Consequently, this pilot, which concentrates only on drought induced displacements, focuses on the main urban centers and surrounding villages for each district. The data is collected through Key Informant Interviews (KIIs) at the location level, from Sunday to Wednesday every week. All locations assessed are monitored each week.

LIMITATIONS

The data is collected through Key Informant Interviews (KIIs), consequently the findings should be considered as estimates. The data is also captured for the "majority of the people displaced within a location". For example, the place of origin assessed for the IDPs in one location, is the place of origin of the majority of these IDPs. The detailed information on all places of origin is not collected and reported.

The information provided is related to a specific event (ongoing drought) and does not provide an overview of all population movements within a location. Moreover, the exercise covers the main urban centres and surrounding areas in each district, consequently none of the districts have a full coverage. The GPS coordinates collected can be approximations and are not always exact locations.

MAPS DISCLAIMER AND LEGENDS

The maps in this report are for illustrative purposes only. Representations and the use of boundaries and geographical names on these maps may include errors and do not imply judgment of the legal status of a territory, nor official recognition or acceptance of these boundaries by IOM.

 Displacement movements within districts

 Displacement movements across regions

 Green dots represent rural settlements and red dots represent urban settlements