

Flooded area in Ngbakowo, Lamurde LGA

A Damaged House in Hyambula, Lamurde LGA

Flooded area in Gulak LGA

Flooded area in Bilachi, Numan LGA

## OVERVIEW

With the onset of the rainy season in Nigeria's northeastern state of Adamawa, varying degrees of damages have been reported in communities in the LGAs Madagali, Lamurde and Numan. Heavy rainfalls, accompanied by strong winds have caused flooding that has led to serious damages to houses and infrastructure.

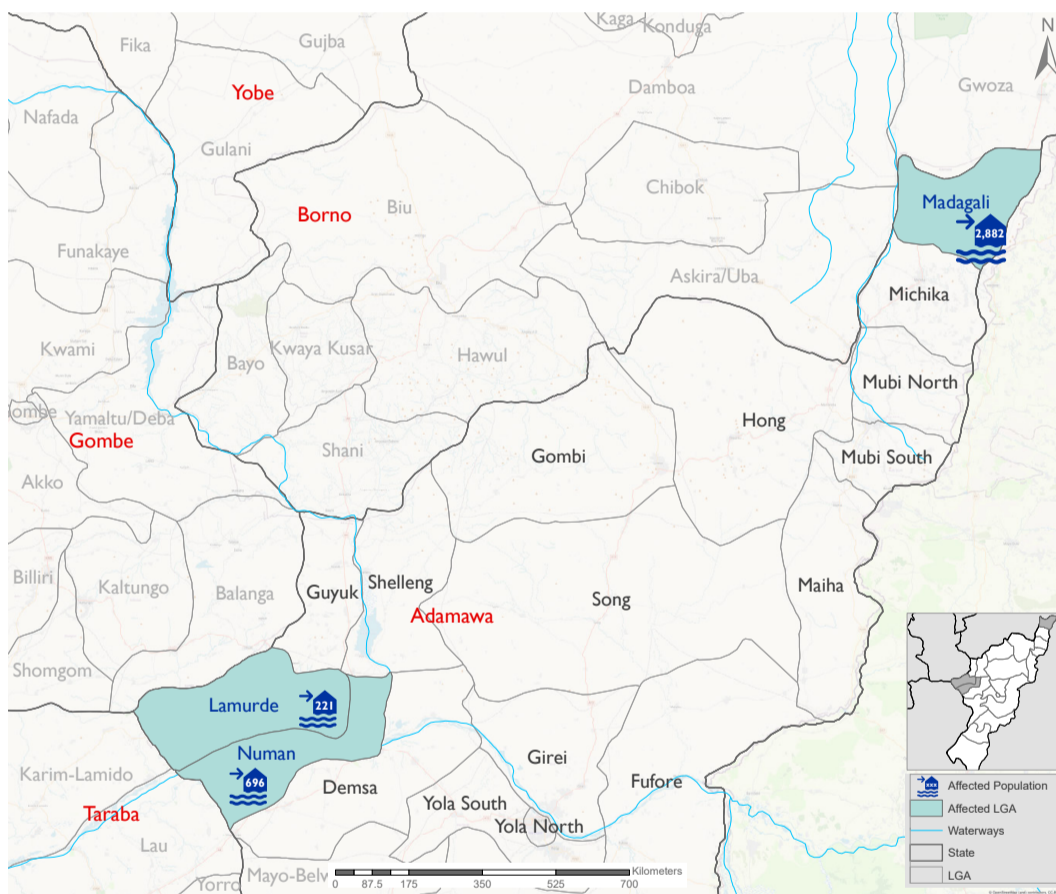
Between 21 and 27 August 2022, IOM's DTM programme carried out assessments to ascertain the level of damage sustained in these locations due to heavy windstorms and rainfall. Overall, 9 communities in Numan, Lamurde and Madagali LGAs were assessed. The worst-hit of the assessed sites was Shuwa, a community in Duhu/Shuwa ward of Madagali LGA, where a heavy rainstorm with floods damaged 126 houses, affecting an estimated 1,080 individuals.

In total, 416 houses were either damaged or flooded by storms, leaving a total of 635 households in immediate need of shelter. Fifty-eight (58) casualties were reported as a result of the Flood.

## NEEDS

There is a major need of shelter repair kits, WASH and NFI assistance as most houses need re-enforcement with brick blocks. As a preventive measure against flooding, most communities need a good drainage system to channel water flow.

## AFFECTED LOCATIONS



The maps in this report are for illustration purposes only. The depiction and use of boundaries, geographic names, and related data shown on maps and included in this report are not warranted to be error free nor do they imply judgment on the legal status of any territory, or any endorsement or acceptance of such boundaries by IOM.

LGA	Ward	Site Type	Site Name	Cause of Incident	No. of Affected Households	No. of Affected Individuals	Male	Female	Children	Casualties	No. of Damaged Houses
Lamurde	Ngbakowo	Host Community	Mgbakowo	Floods	38	221	92	129	117	2	52
Madagali	Duhu/Shuwa	Host Community	Shuwa	Floods	181	1,080	449	631	677	19	126
	Gulak	Host Community	Gulak Gari	Floods	137	844	388	456	557	15	69
	Hyambula	Host Community	Hyambula	Floods	63	378	181	197	272	8	62
	Pallam	Host Community	Pallam 'B'	Floods	55	330	144	186	223	0	30
	Wagga	Host Community	Wagga	Floods	41	250	96	154	152	0	23
<b>Total</b>					<b>477</b>	<b>2,882</b>	<b>1,258</b>	<b>1,624</b>	<b>1,881</b>	<b>42</b>	<b>310</b>
Numan	Bare	Host Community	Bilachi	Floods	37	175	77	98	103	11	18
	Gamadio	Host Community	Wadikake	Floods	29	198	84	114	108	1	14
	Kodomti	Host Community	Kikan	Floods	54	323	137	186	170	2	22
<b>Total</b>					<b>120</b>	<b>696</b>	<b>298</b>	<b>398</b>	<b>381</b>	<b>14</b>	<b>54</b>
<b>Grand Total</b>					<b>635</b>	<b>3,799</b>	<b>1,648</b>	<b>2,151</b>	<b>2,379</b>	<b>58</b>	<b>416</b>

"When quoting, paraphrasing, or in any other way using the information mentioned in this report, the source needs to be stated appropriately as follows: "Source: Displacement Tracking Matrix (DTM) of the International Organization for Migration (IOM), Nigeria Mission, AUGUST 2022.""