



# DTM

## IOM DISPLACEMENT TRACKING MATRIX

### BURUNDI AUGUST 2017



# 191,806 IDPs

## 42,859 Displaced Households



Women + Children



Children



Disabled persons



Women head of households



### 56%

#### 106,755

in host families



### 26%

#### 50,229

in rented houses



### 13%

#### 25,931

in empty houses and other types of lodging

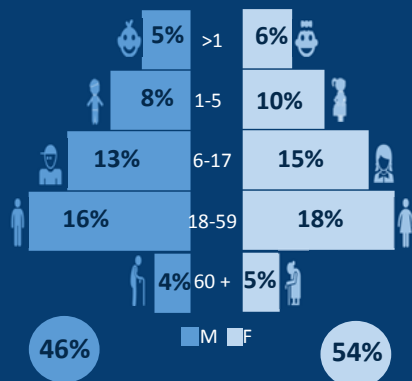


### 5%

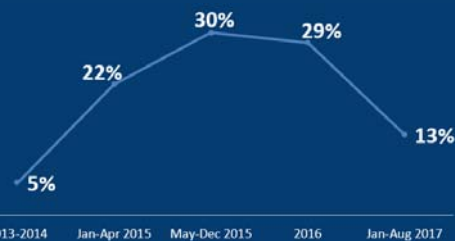
#### 8,891

in camps and collective sites

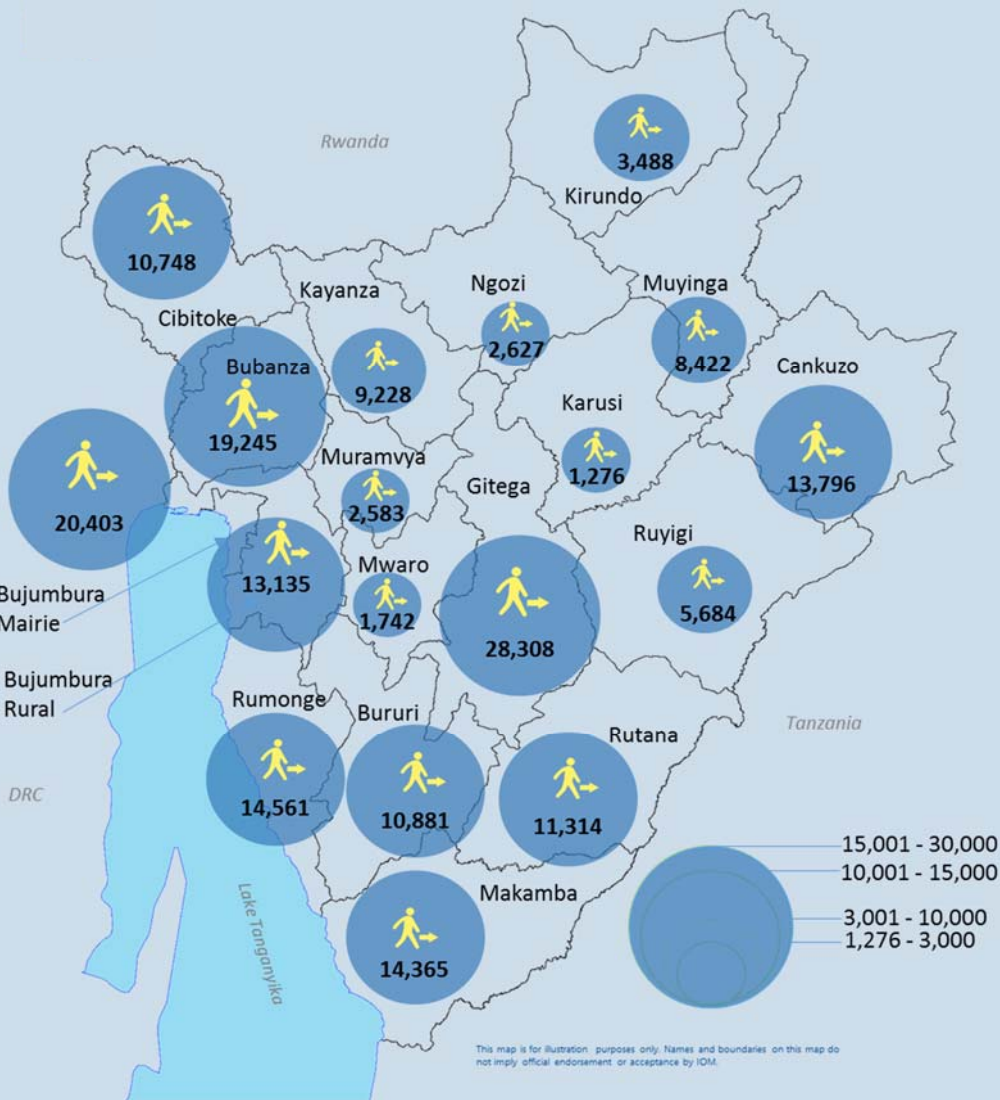
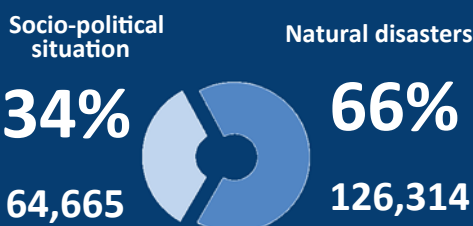
#### IDP DEMOGRAPHIC



#### DISPLACEMENT PERIODS



#### DISPLACEMENT REASONS



This map is for illustration purposes only. Names and boundaries on this map do not imply official endorsement or acceptance by IOM.



**USAID**  
FROM THE AMERICAN PEOPLE



United Nations  
**CERF**  
Central Emergency Response Fund



Contact: IOM Burundi, [DTMBurundi@iom.int](mailto:DTMBurundi@iom.int), Tel: +257 75400448 • Facebook: International Organization for Migration – Burundi • Twitter: @IOM\_Burundi

