

23,248
NEWLY DISPLACED BETWEEN
JANUARY AND FEBRUARY

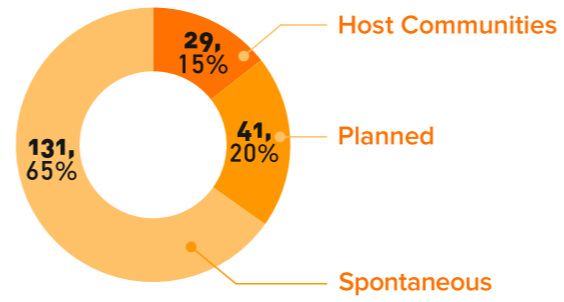
8 DISTRICTS

TOTAL POPULATION DISPLACED
431,634

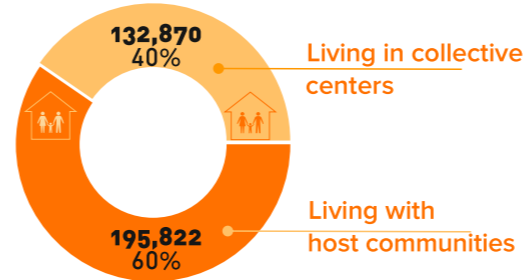
54,727 Households
230 Settlements

- 328,692** IDPs
- 69,732** IDPs RETURNNEES
- 31,584** REFUGEE RETURNNEES
- 1,626** NON-SOMALI MIGRANTS

SITE CLASSIFICATIONS



DISPLACED PER RESIDENT LOCATION



Between January to February 2017, DTM collected estimates on displaced within host communities and within sites through Key informant interviews (KIIs) within locations with confirmed displaced populations using a network of community level sources and government partners.

ESTIMATES PER DISTRICT

DISTRICT	IDPS	IDP RETURNNEES	REFUGEE RETURNNEES	NON SOMALI MIGRANTS	DISPLACED POPULATION
JOWHAR	85,290	57,030	636	0	142,956
AFMADOW	89,580	5,496	3,840	0	98,916
KISMAYO	54,000	0	22,704	12	76,716
BALCAD	43,272	2,766	210	0	46,248
BELET WEYNE	27,810	12	12	0	27,834
BORAMA	11,400	1,230	1,326	918	14,874
BELET XAAWO	10,824	318	1,470	438	13,050
DOLOW	6,516	2,880	1,386	258	11,040
TOTAL	328,692	69,732	31,584	1,626	431,634

PRIORITY NEEDS

Overall, food is the main priority need for IDPs located in the settlements, with approximately 63% of IDP families mentioning this need. Drinking water was the second major need at 59% and shelter as the third need (40%).

