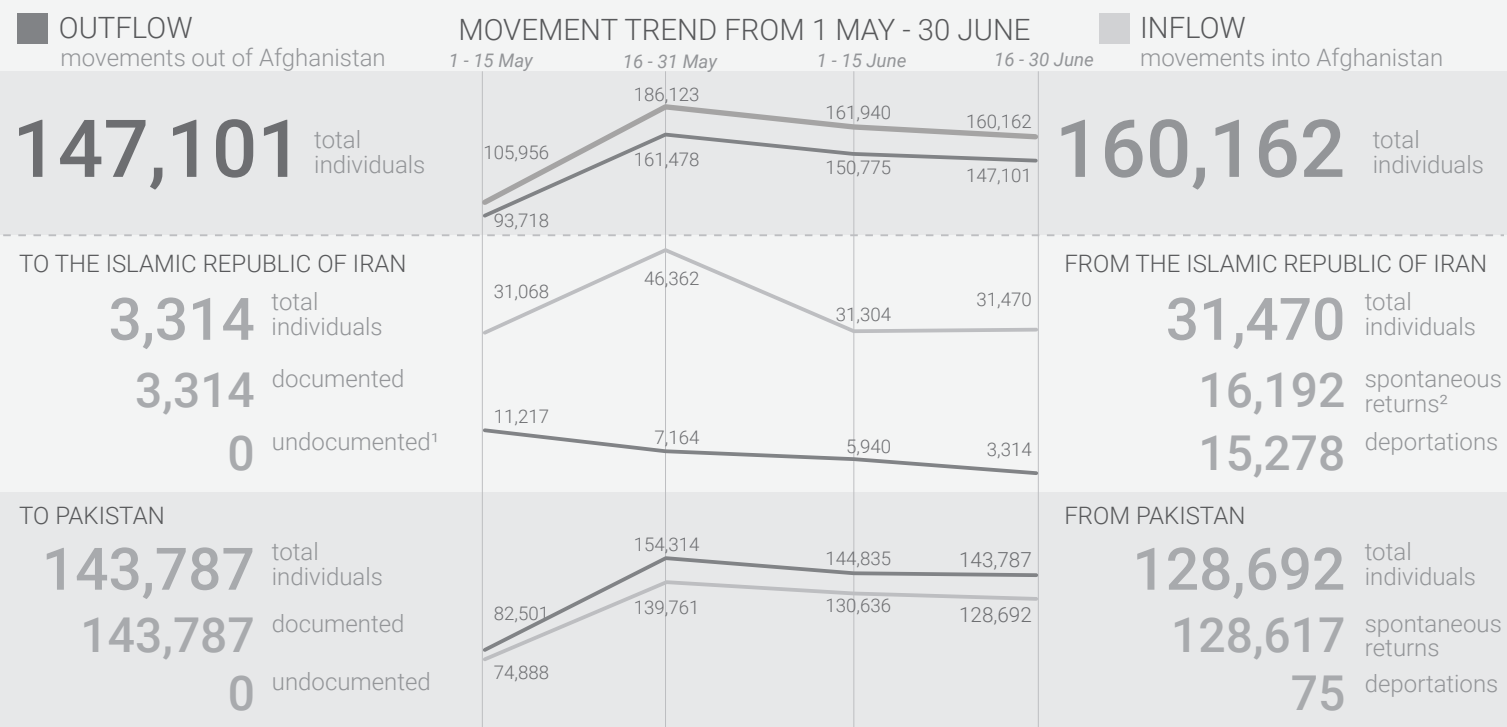


MOVEMENT SUMMARY - AFGHANISTAN TO AND FROM NEIGHBORING COUNTRIES

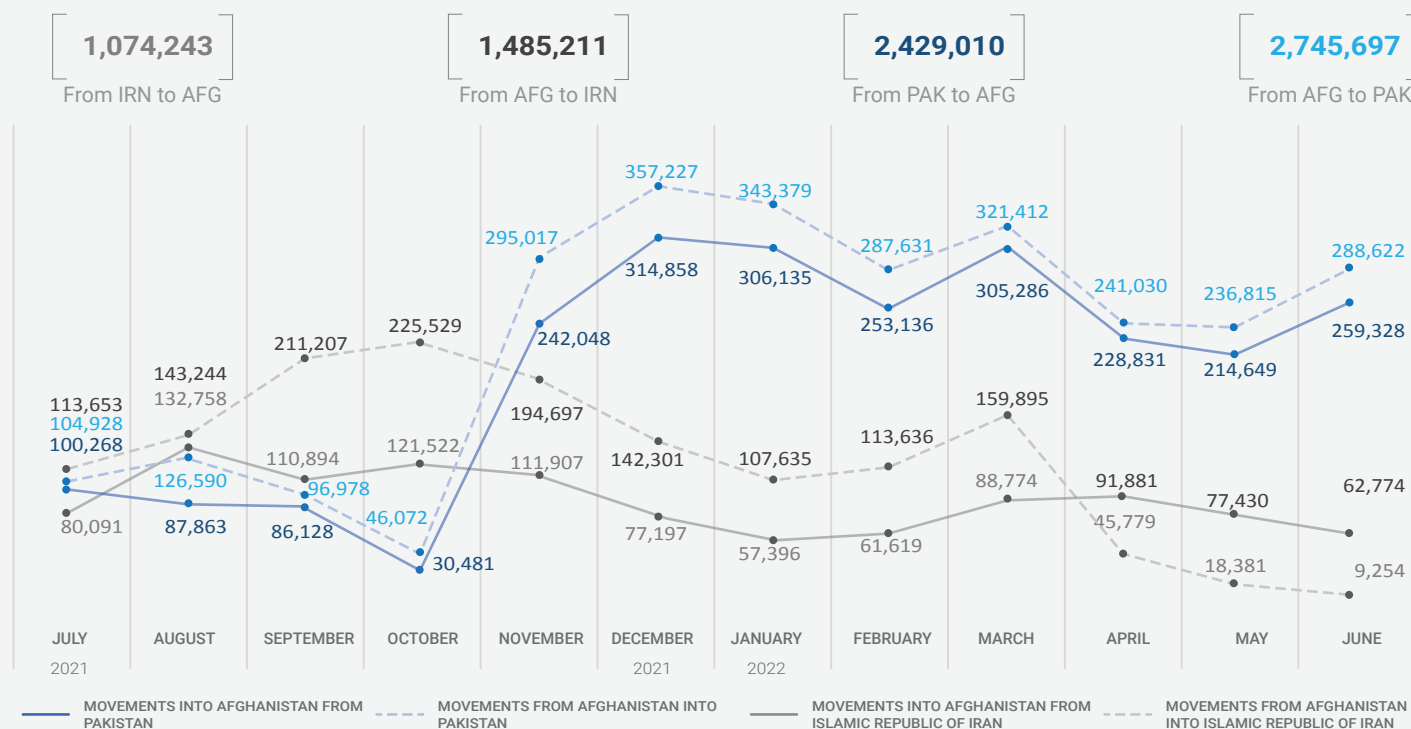
Acknowledging the deep rooted generosity of the people and the governments of the Islamic Republic of Iran and Pakistan for hosting millions of Afghan migrants and refugees for over 4 decades, this document captures present mobility and displacement trends between Afghanistan, the Islamic Republic of Iran and Pakistan.



THIS PERIOD'S HIGHLIGHTS

- The reporting period observed a slight increase in inflow movement between the Islamic Republic of Iran and Afghanistan, with 31,470 individuals compared to 31,304 during the previous two-week period. Similarly, the outflows also decreased from 5,904 to 3,314 during this reporting period.
- Crossings between Afghanistan and Pakistan slightly decreased in both inflows and outflows, with an average of 9,586 outflows per day compared to 9,656 in the previous two-week period and an average of 8,579 inflows per day compared to 8,709 in the previous reporting period.

TRENDS OF MOVEMENT IN AND OUT OF AFGHANISTAN IN THE LAST 1 YEAR (JULY 2021 - JUNE 2022)



FROM ISLAMIC REPUBLIC OF IRAN

The movements from the Islamic Republic of Iran into Afghanistan slightly increased from 31,304 in the previous two weeks to **31,470** during this reporting period. IOM assisted 11,613 returnees, of which **9,447 (81%) were male and 2,166 (19%) were female**. During this reporting period, around 49% (15,278) of all crossings of Afghan nationals from the Islamic Republic of Iran to Afghanistan were deportations. The remains of 51 Afghan nationals, who reportedly died due to accidents and natural causes, were repatriated during the reporting weeks.

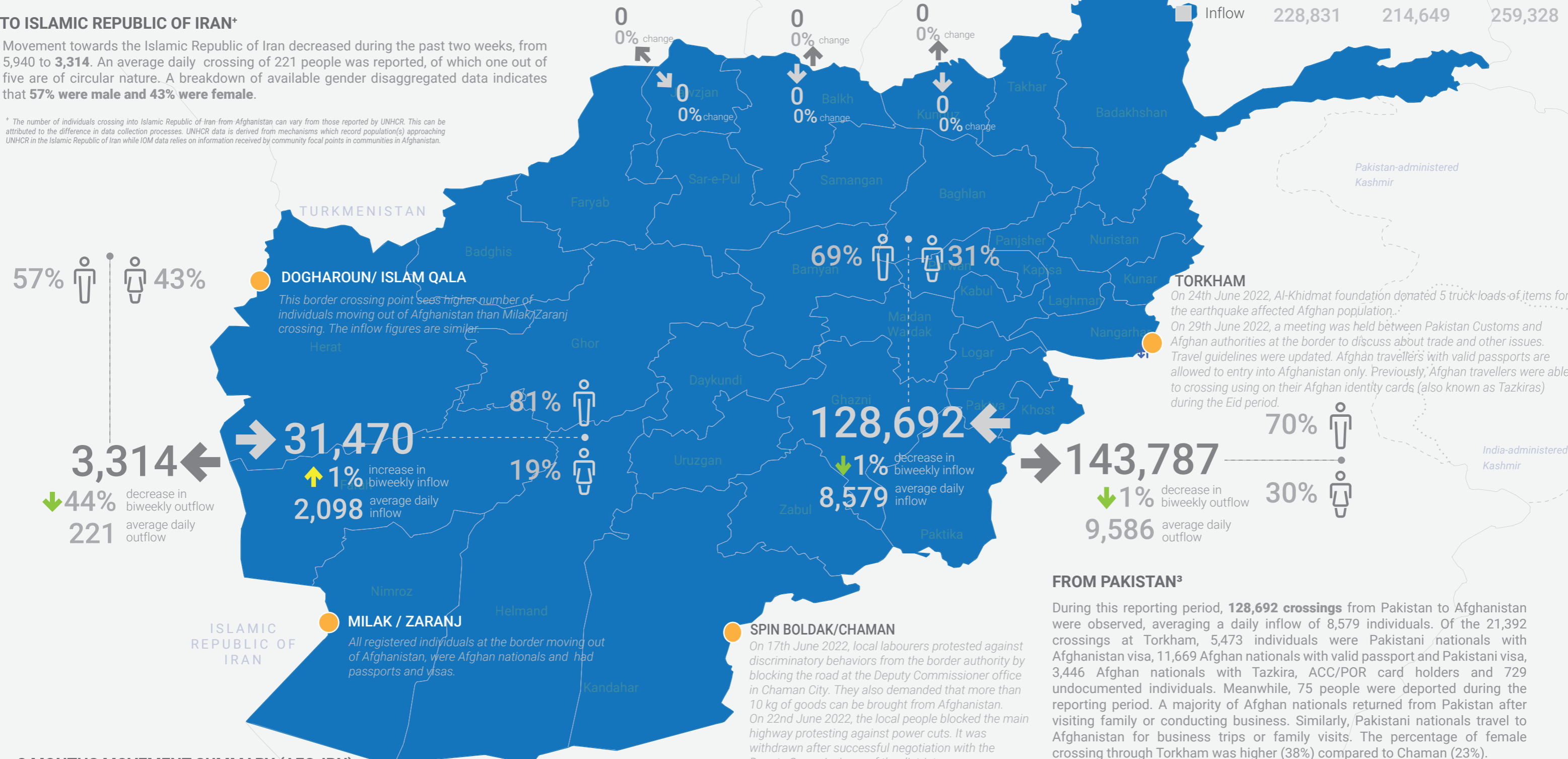
TO ISLAMIC REPUBLIC OF IRAN*

Movement towards the Islamic Republic of Iran decreased during the past two weeks, from 5,940 to **3,314**. An average daily crossing of 221 people was reported, of which one out of five are of circular nature. A breakdown of available gender disaggregated data indicates that **57% were male and 43% were female**.

* The number of individuals crossing into Islamic Republic of Iran from Afghanistan can vary from those reported by UNHCR. This can be attributed to the difference in data collection processes. UNHCR data is derived from mechanisms which record population(s) approaching UNHCR in the Islamic Republic of Iran while IOM data relies on information received by community focal points in communities in Afghanistan.

3 MONTHS MOVEMENT SUMMARY (AFG-PAK)

	April	May	June
Outflow	241,030	236,815	288,622
Inflow	228,831	214,649	259,328



DOGHAROUN/ ISLAM QALA

This border crossing point sees higher number of individuals moving out of Afghanistan than Milak/Zaranj crossing. The inflow figures are similar.

MILAK / ZARANJ

All registered individuals at the border moving out of Afghanistan, were Afghan nationals and had passports and visas.

SPIN BOLDAK/CHAMAN

On 17th June 2022, local labourers protested against discriminatory behaviors from the border authority by blocking the road at the Deputy Commissioner office in Chaman City. They also demanded that more than 10 kg of goods can be brought from Afghanistan. On 22nd June 2022, the local people blocked the main highway protesting against power cuts. It was withdrawn after successful negotiation with the Deputy Commissioner of the district.

TORKHAM

On 24th June 2022, Al-Khidmat foundation donated 5 truck-loads of items for the earthquake affected Afghan population. On 29th June 2022, a meeting was held between Pakistan Customs and Afghan authorities at the border to discuss about trade and other issues. Travel guidelines were updated. Afghan travellers with valid passports are allowed to entry into Afghanistan only. Previously, Afghan travellers were able to crossing using on their Afghan identity cards (also known as Tazkiras) during the Eid period.

3 MONTHS MOVEMENT SUMMARY (AFG-IRN)

	April	May	June
Outflow	45,779	18,381	9,254
Inflow	91,881	77,430	62,774

TO PAKISTAN³

Movements from Afghanistan into Pakistan decreased when compared to the last two weeks and the reporting period saw a total of **143,787 crossings**. Among the 22,887 individuals who crossed from Torkham, 6,092 were Pakistani nationals, 13,915 Afghan nationals with valid visas, 5 individuals with third country passport, 1,571 Afghan patients who required medical treatment in Pakistan, along with 1,304 who were attendants (person who accompanies a sick person/patient). Out of the total individuals, **70% were male and 30% female**. Similarly to the inflow gender ratio, the percentage of female crossing through Torkham was higher (38%) compared to Chaman (23%).

The boundaries and names shown and the designations used on this map do not imply official endorsement or acceptance by IOM. Line of Control: Dotted line represents approximately the Line of Control in Jammu and Kashmir agreed upon by India and Pakistan. The final status of Jammu and Kashmir has not yet been agreed upon by the parties

¹Undocumented individual: An individual of Afghan origin in Pakistan or Islamic Republic of Iran who does not have valid documents. Valid documentation includes: a valid Proof of Registration (PoR) card issued by the Government of Pakistan, an Afghan Citizen Card (ACC), and either a valid Pakistan visa, an Amayesh card, or a valid Iranian visa to remain/stay in Pakistan or the Islamic Republic of Iran.
²Spontaneous returns: Individuals crossing the border to Afghanistan willingly and without being forced or coerced. These individuals can be documented or undocumented.
³The number of individuals crossing into and from Pakistan are based on the compilation of numbers coordinated between IOM Afghanistan and IOM Pakistan. The numbers do not reflect nationalities and may include Afghans, Pakistanis and third country nationals.

BASELINE MOBILITY ASSESSMENT (BMA) AND COMMUNITY-BASED NEEDS ASSESSMENT (CBNA)

The BMA assessment tracks mobility, provides information on population estimates, locations and geographic distribution of displaced, return and migrant populations, reasons for displacement, places of origin and periods of displacement. The CBNA documents vulnerabilities and multisectoral needs. Data is collected at the settlement level, through focus group discussions with community focal points and direct observations. Round 14⁴ of the BMA and CBNA were conducted in November and December 2021.

IDP ARRIVALS

1,327,474 In 2021
5,832,454 2012 - 2021

Arrival IDPs are Afghans who fled their communities of origin and have arrived in the assessed locations within Afghanistan as a result of, or in order to avoid, the effects of armed conflict, generalized violence, human rights violations, protection concerns, or natural and human-made disasters.

INDIVIDUALS MOVED ABROAD

1,358,770 In 2021
4,519,522 2012 - 2021

Afghans who have moved abroad from the assessed location, regardless of the reason or duration of the expatriation. This category includes individuals in need of international protection, and economic migrants who have left Afghanistan.

INDIVIDUALS RETURNED FROM ABROAD

575,818 In 2021
5,149,245 2012 - 2021

Afghans who have returned to the assessed locations after having spent at least six months abroad. This includes both documented and undocumented returnees.

MAIN FINDINGS (As of 31 December 2021)

ARRIVAL IDPs

1,327,474 In 2021

62% Conflict displacement

38% Disaster displacement

2 in 3 Displaced within their home province

255,147 Arrived in **19%** Kabul Province (Highest in Afghanistan)

UNEMPLOYMENT

4 out of 5
83% Afghan nationals over 18 years old are unemployed in the country

FINANCE AND ASSETS

51% Of households' disposable income is spent on food purchases

3 million Households are in debt

INDIVIDUALS MOVED ABROAD

1,358,770 In 2021

891,362 **66%**
Islamic Republic of Iran

259,266 **19%**
Pakistan

165,257 **12%**
Europe & Turkey

SECURITY INCIDENTS (JULY TO DECEMBER 2021 - RANKED)

1 Armed conflict

2 IEDs

3 Mines/UXOs

4 Extortion

INDIVIDUALS RETURNED FROM ABROAD

575,818 In 2021

304,889 **53%**
Islamic Republic of Iran

191,810 **33%**
Pakistan

63,360 **11%**
Europe & Turkey

HEALTH

19% of all surveyed communities have a health clinic located within the confines of their community.

WASH

55%* Reported shortage of water for drinking and agriculture purposes

3 out of 4* **76%** lack access to safe latrine facilities

* of all surveyed communities

⁴ BMA Round 14 report ; CBNA Round 14 report

The boundaries and names shown and the designations used on this map do not imply official endorsement or acceptance by IOM. Line of Control: Dotted line represents approximately the Line of Control in Jammu and Kashmir agreed upon by India and Pakistan. The final status of Jammu and Kashmir has not yet been agreed upon by the parties

Creation date: 04/July/2022 | Data sources: IOM DTM, DTM BMA/CBNA, IOM CBR, DoRR | Map data: IOM, OCHA, UNHCR | INDEX: RDH10096 | This document was produced with the financial assistance of the Czech Republic, the European Union, the Government of Japan, the Swiss Cooperation Office and the Government of the United Kingdom. The views expressed herein can in no way be taken to reflect the official opinion of the aforementioned donors.

