

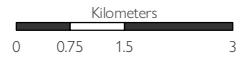


Facility, Infrastructure and Service (FIS) Mapping

eThekweni | Ward 2

Source Data :
ESRI, IOM, MDB, OCHA

1:105,000 1 cm = 1 km

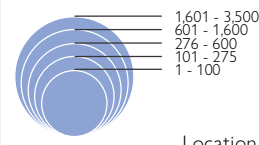


Map Production Date : 7 July 2022

Disclaimer : This map is for illustration purposes only. The boundaries and names shown and the designations used on this map do not imply official endorsement or acceptance by the International Organization for Migration.

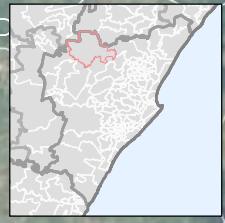
southafrica.iom.int
iompretoria2@iom.int

Individuals Displaced



- Primary Road
- Secondary Road
- Waterway
- Waterbody
- Care centre
- Host community
- Community building
- Education
- Healthcare
- Transport
- Sanitation
- Water point
- Industrial compound
- Livestock
- Agriculture
- Partially destroyed
- Destroyed

Location typologies and status:

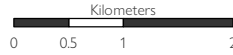


Facility, Infrastructure and Service (FIS) Mapping

eThekwini | Ward 4

1:69,000

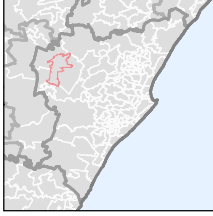
1 cm = 1 km



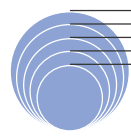
Source Data :
ESRI, IOM, MDB, OCHA

Disclaimer : This map is for illustration purposes only. The boundaries and names shown and the designations used on this map do not imply official endorsement or acceptance by the International Organization for Migration.

Map Production Date : 7 July 2022
southafrica.iom.int | iompretoria2@iom.int



Individuals Displaced

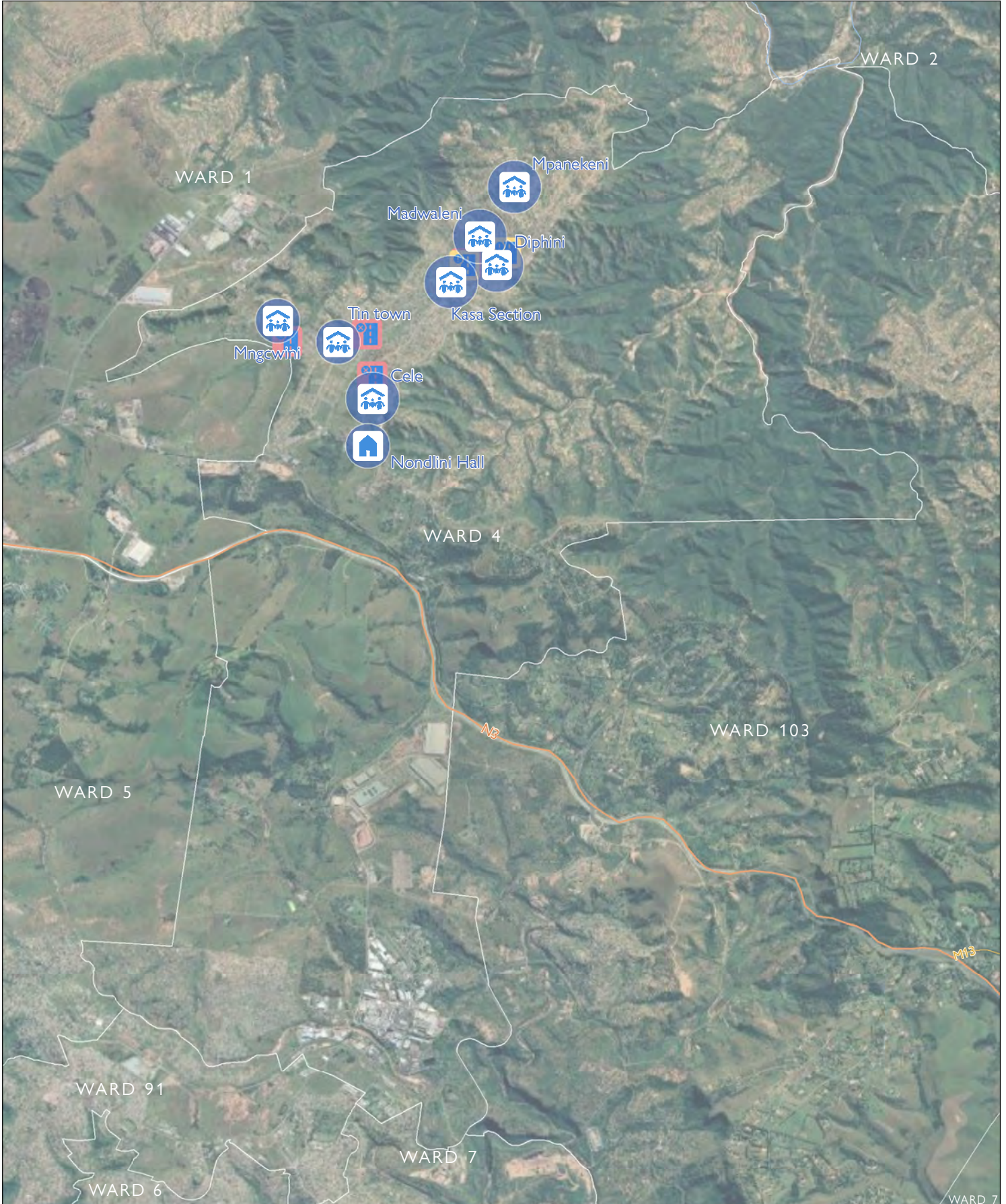


1,601 - 3,500
601 - 1,600
276 - 600
101 - 275
1 - 100

- Primary Road
- Secondary Road
- Waterway
- Waterbody

Location typologies and status:

- Care centre
- Education
- Sanitation
- Livestock
- Host community
- Healthcare
- Water point
- Agriculture
- Community building
- Transport
- Industrial compound
- Partially destroyed
- Destroyed

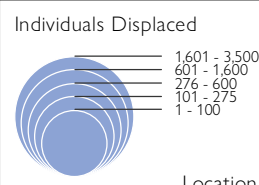




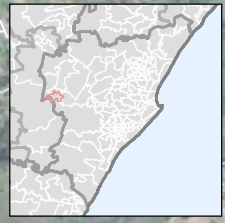
Facility, Infrastructure and Service (FIS) Mapping

eThekweni | Ward 6

Source Data : 1:33,000 1 cm = 0 km
 ESRI, IOM, MDB, OCHA
 Disclaimer : This map is for illustration purposes only. The boundaries and names shown and the designations used on this map do not imply official endorsement or acceptance by the International Organization for Migration.
 Map Production Date : 7 July 2022
 southafrica.iom.int
 iompretoria2@iom.int



Primary Road	Care centre	Education	Sanitation	Livestock
Secondary Road	Host community	Healthcare	Water point	Agriculture
Waterway	Community building	Transport	Industrial compound	Partially destroyed
Waterbody				Destroyed

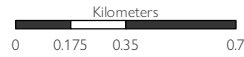


Facility, Infrastructure and Service (FIS) Mapping

eThekweni | Ward 12

1:24,000

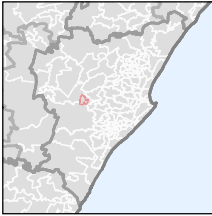
1 cm = 0 km



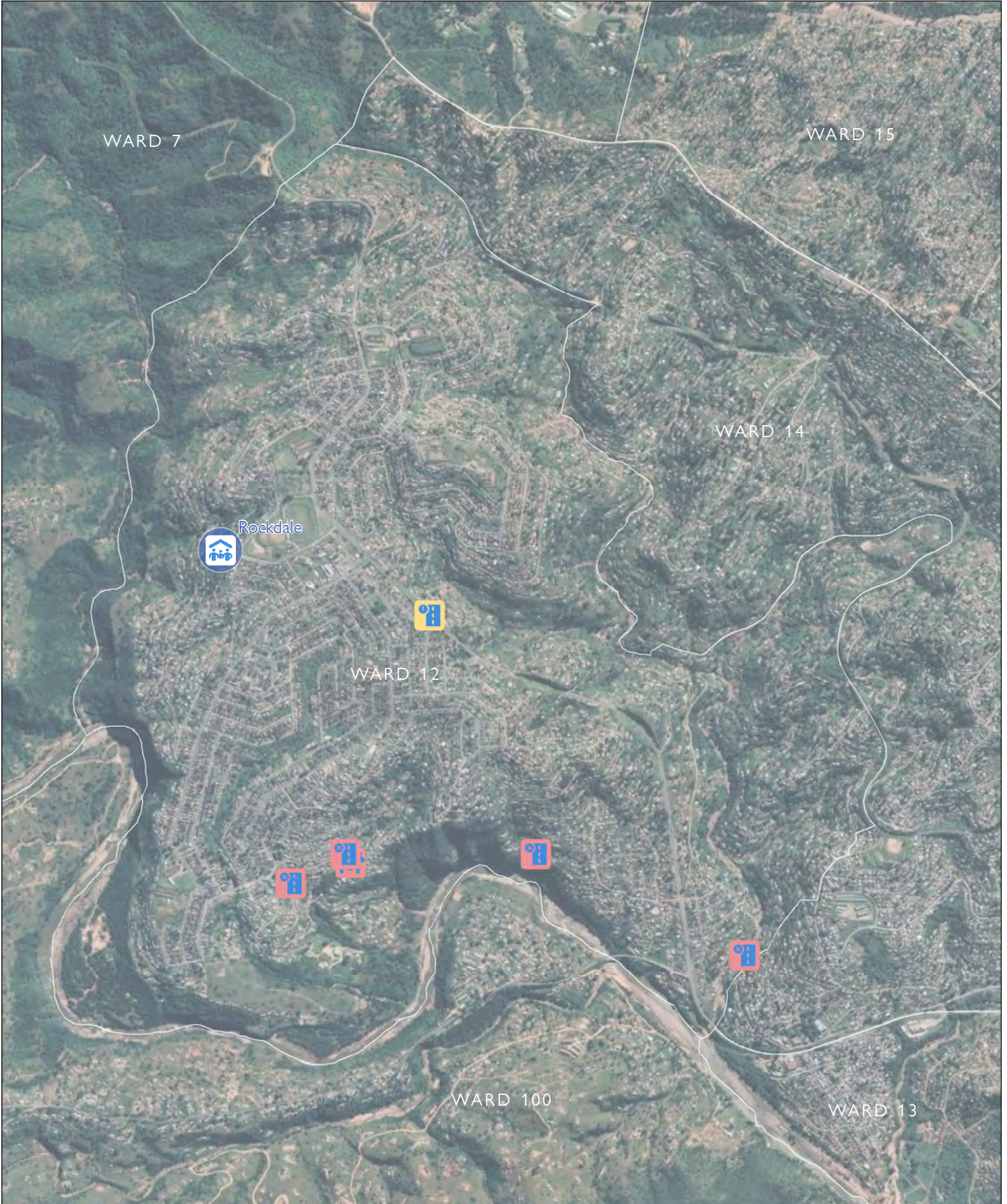
Source Data :
ESRI, IOM, MDB, OCHA

Disclaimer : This map is for illustration purposes only. The boundaries and names shown and the designations used on this map do not imply official endorsement or acceptance by the International Organization for Migration.

Map Production Date : 7 July 2022
southafrica.iom.int | iompretoria2@iom.int

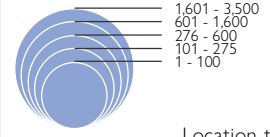







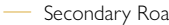








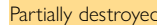

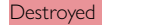
<p>Individuals Displaced</p> <ul style="list-style-type: none"> 1,601 - 3,500 601 - 1,600 276 - 600 101 - 275 1 - 100 	<p>Primary Road</p>	Care centre	Education	Sanitation	Livestock
	<p>Secondary Road</p>	Host community	Healthcare	Water point	Agriculture
	<p>Waterway</p>	Community building	Transport	Industrial compound	Partially destroyed
	<p>Waterbody</p>	<p>Location typologies and status:</p> Destroyed			



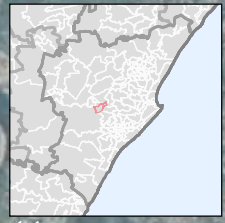
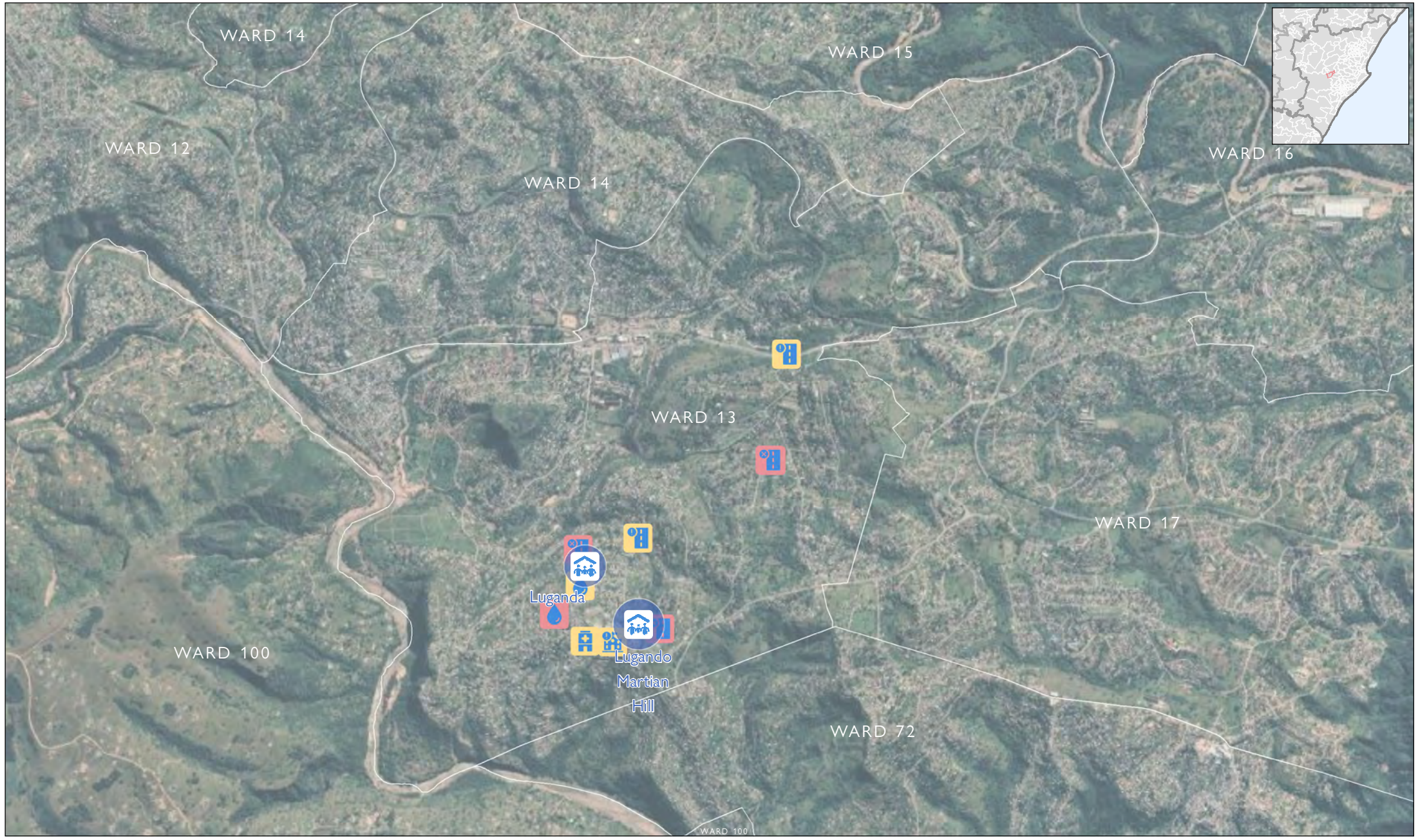
Source Data : ESRI, IOM, MDB, OCHA
 1:32,000 1 cm = 0 km
 Kilometers 0 0.225 0.45 0.9
 Map Production Date : 7 July 2022
 southafrica.iom.int
 iompretoria2@iom.int

Individuals Displaced



 Primary Road	 Care centre	 Education	 Sanitation	 Livestock
 Secondary Road	 Host community	 Healthcare	 Water point	 Agriculture
 Waterway	 Community building	 Transport	 Industrial compound	 Partially destroyed
 Waterbody			 Destroyed	

Location typologies and status:

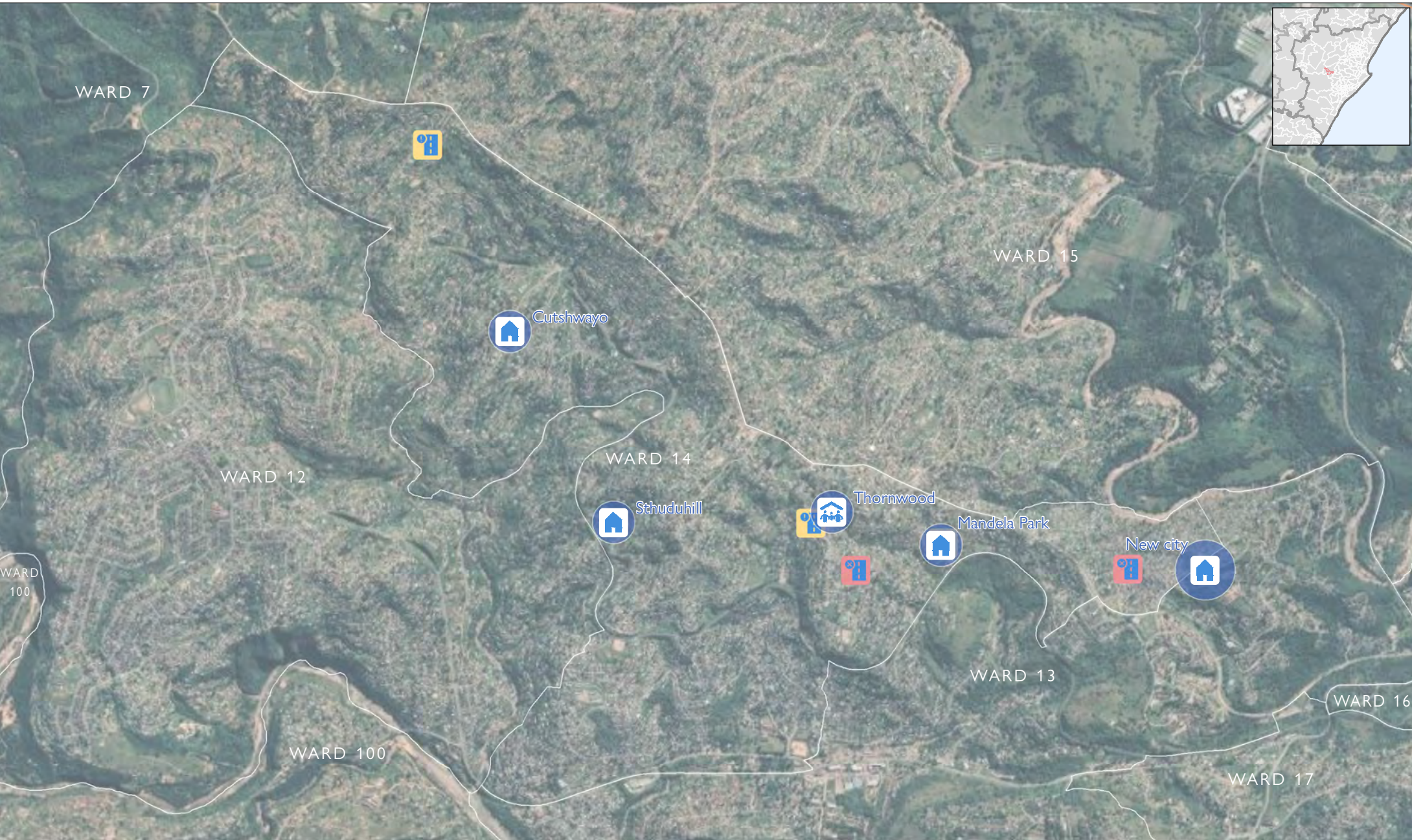


Individuals Displaced

- 1,601 - 3,500
- 601 - 1,600
- 276 - 600
- 101 - 275
- 1 - 100

Location typologies and status:

- Primary Road
- Secondary Road
- Waterway
- Waterbody
- Care centre
- Host community
- Community building
- Education
- Healthcare
- Transport
- Sanitation
- Water point
- Industrial compound
- Livestock
- Agriculture
- Partially destroyed
- Destroyed



Individuals Displaced

- 1,601 - 3,500
- 601 - 1,600
- 276 - 600
- 101 - 275
- 1 - 100

Location typologies and status:

- Primary Road
- Secondary Road
- Waterway
- Waterbody
- Care centre
- Host community
- Community building
- Education
- Healthcare
- Transport
- Sanitation
- Water point
- Industrial compound
- Livestock
- Agriculture
- Partially destroyed
- Destroyed

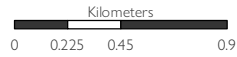


Facility, Infrastructure and Service (FIS) Mapping

eThekweni | Ward 16

1:32,000

1 cm = 0 km

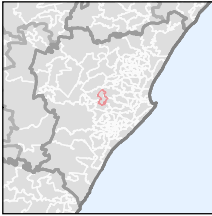


Source Data :
ESRI, IOM, MDB, OCHA

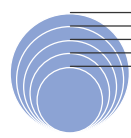
Disclaimer : This map is for illustration purposes only. The boundaries and names shown and the designations used on this map do not imply official endorsement or acceptance by the International Organization for Migration.

Map Production Date : 7 July 2022

southafrica.iom.int | iompretoria2@iom.int



Individuals Displaced

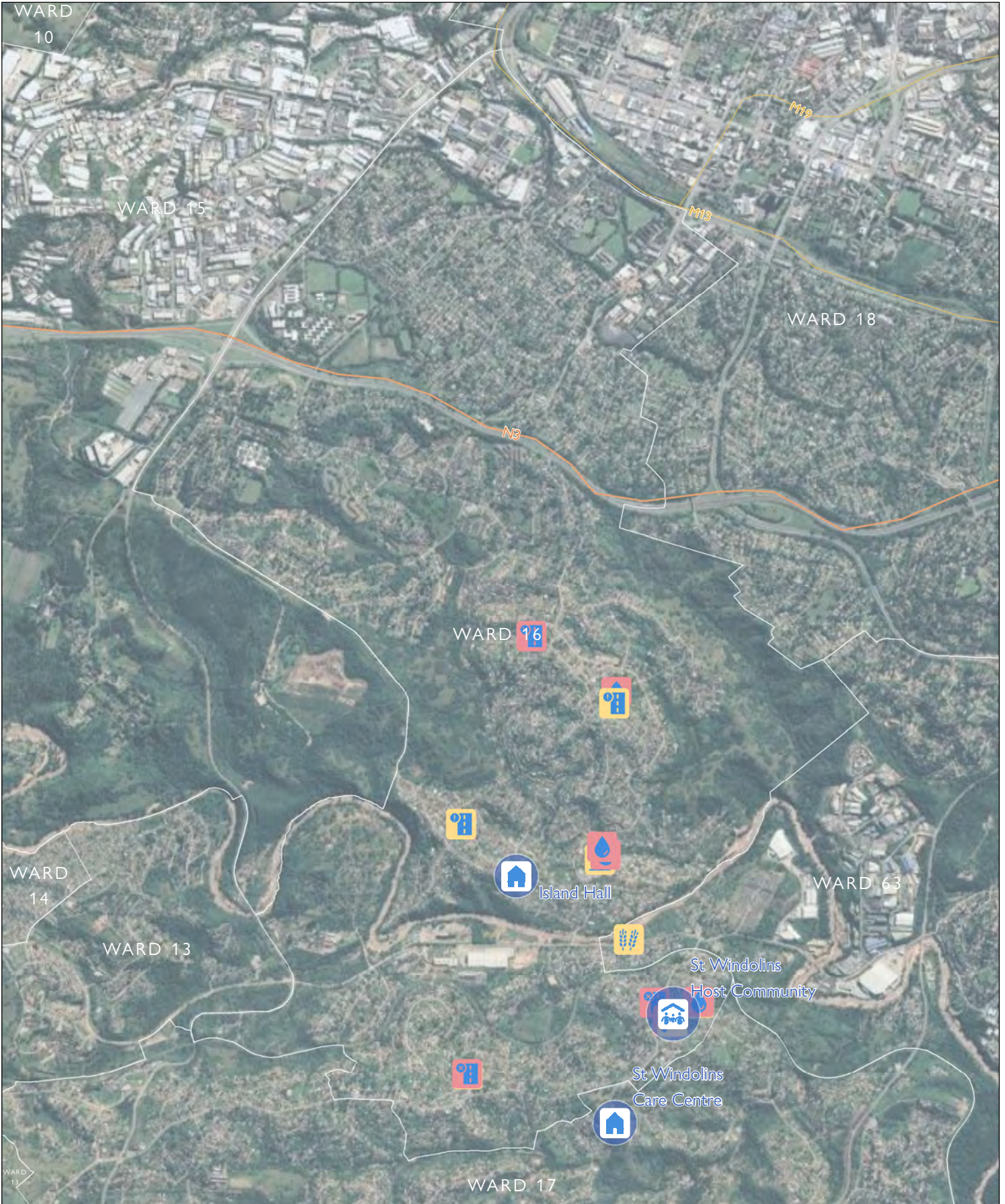


1,601 - 3,500
601 - 1,600
276 - 600
101 - 275
1 - 100

- Primary Road
- Secondary Road
- Waterway
- Waterbody

Location typologies and status:

- Care centre
- Education
- Sanitation
- Livestock
- Host community
- Healthcare
- Water point
- Agriculture
- Community building
- Transport
- Industrial compound
- Partially destroyed
- Destroyed

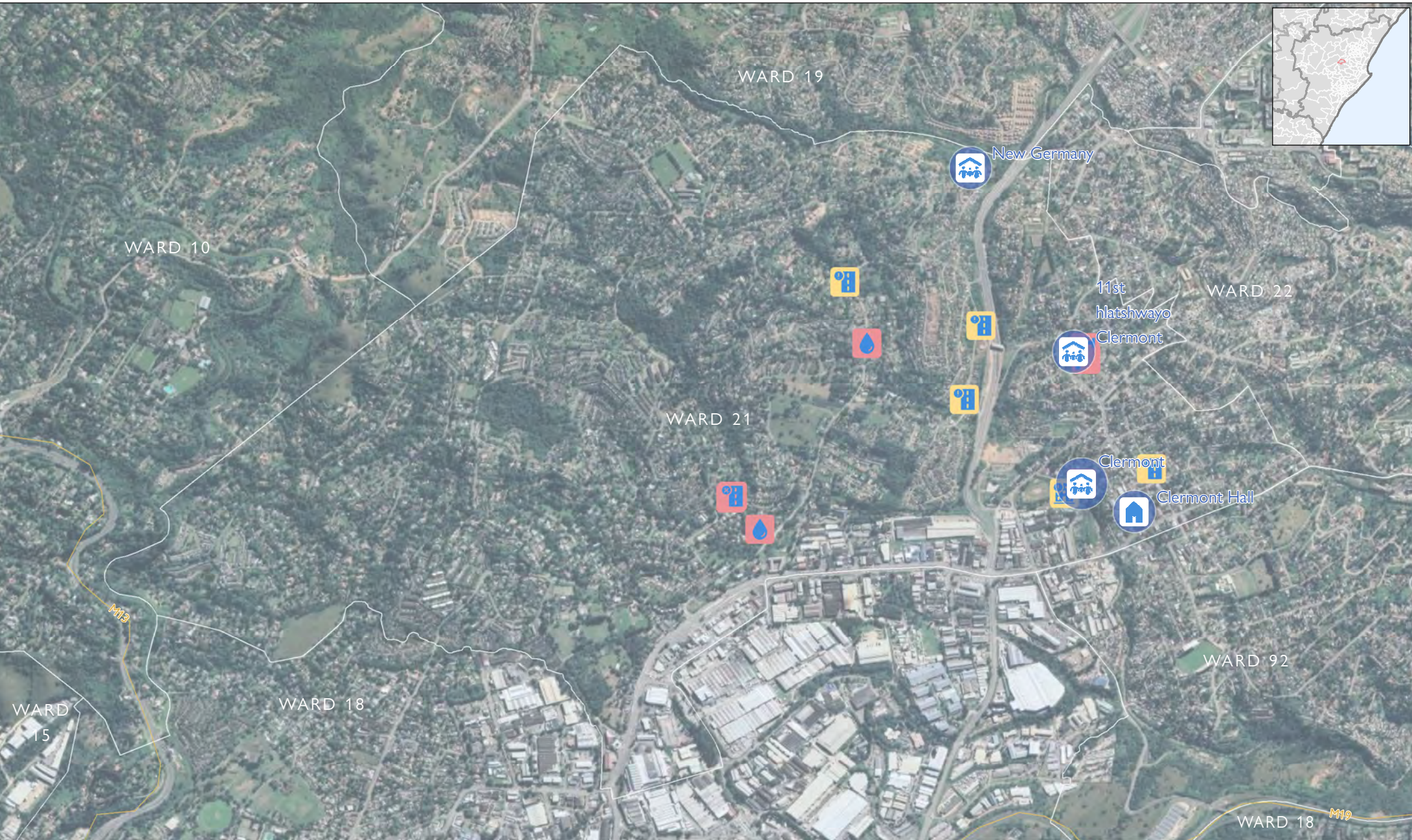


Individuals Displaced

- 1,601 - 3,500
- 601 - 1,600
- 276 - 600
- 101 - 275
- 1 - 100

Location typologies and status:

- Primary Road
- Secondary Road
- Waterway
- Waterbody
- Care centre
- Host community
- Community building
- Education
- Healthcare
- Transport
- Sanitation
- Water point
- Industrial compound
- Livestock
- Agriculture
- Partially destroyed
- Destroyed

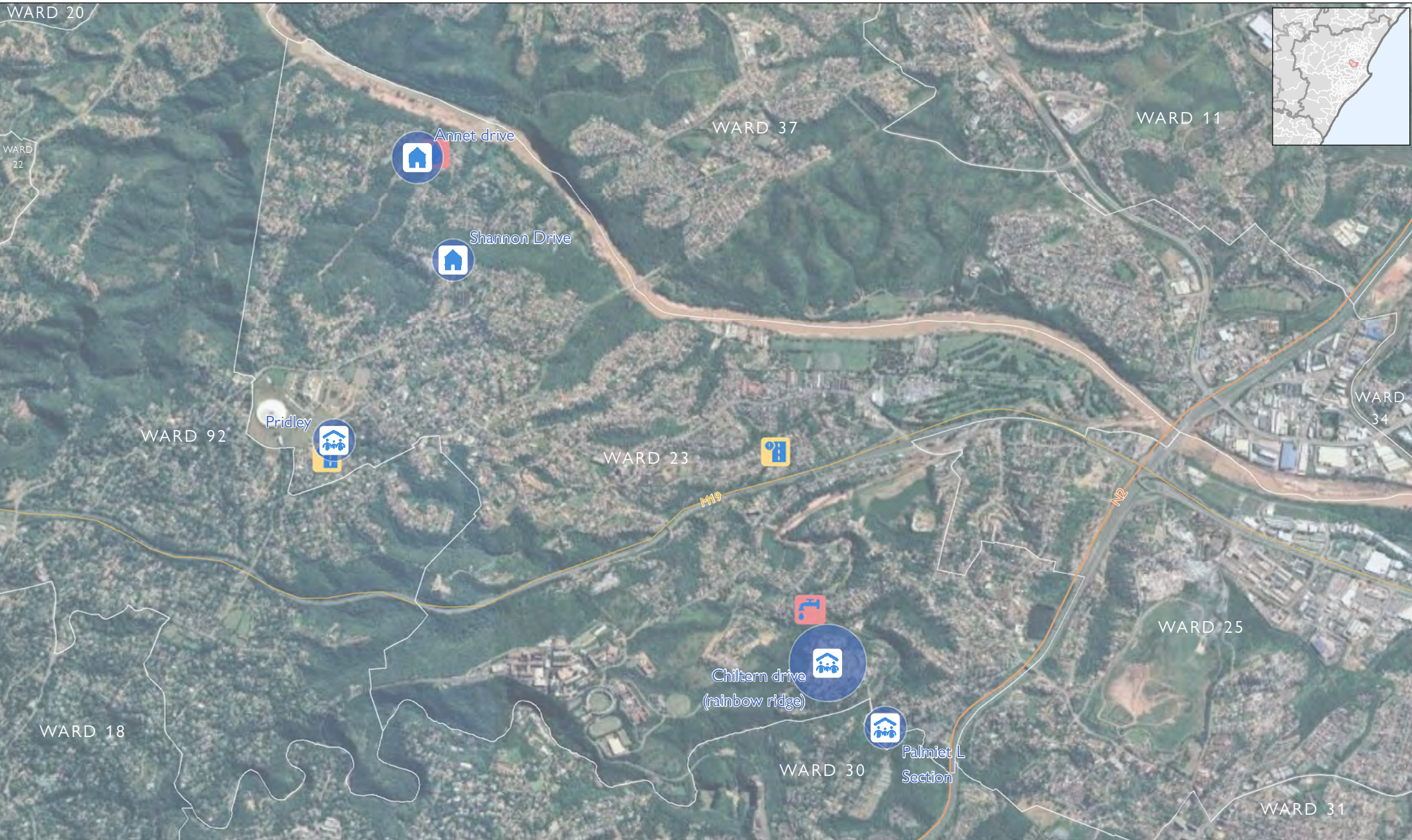


Individuals Displaced

- 1,601 - 3,500
- 601 - 1,600
- 276 - 600
- 101 - 275
- 1 - 100

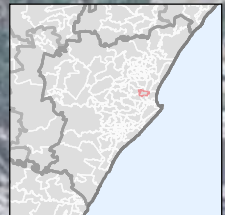
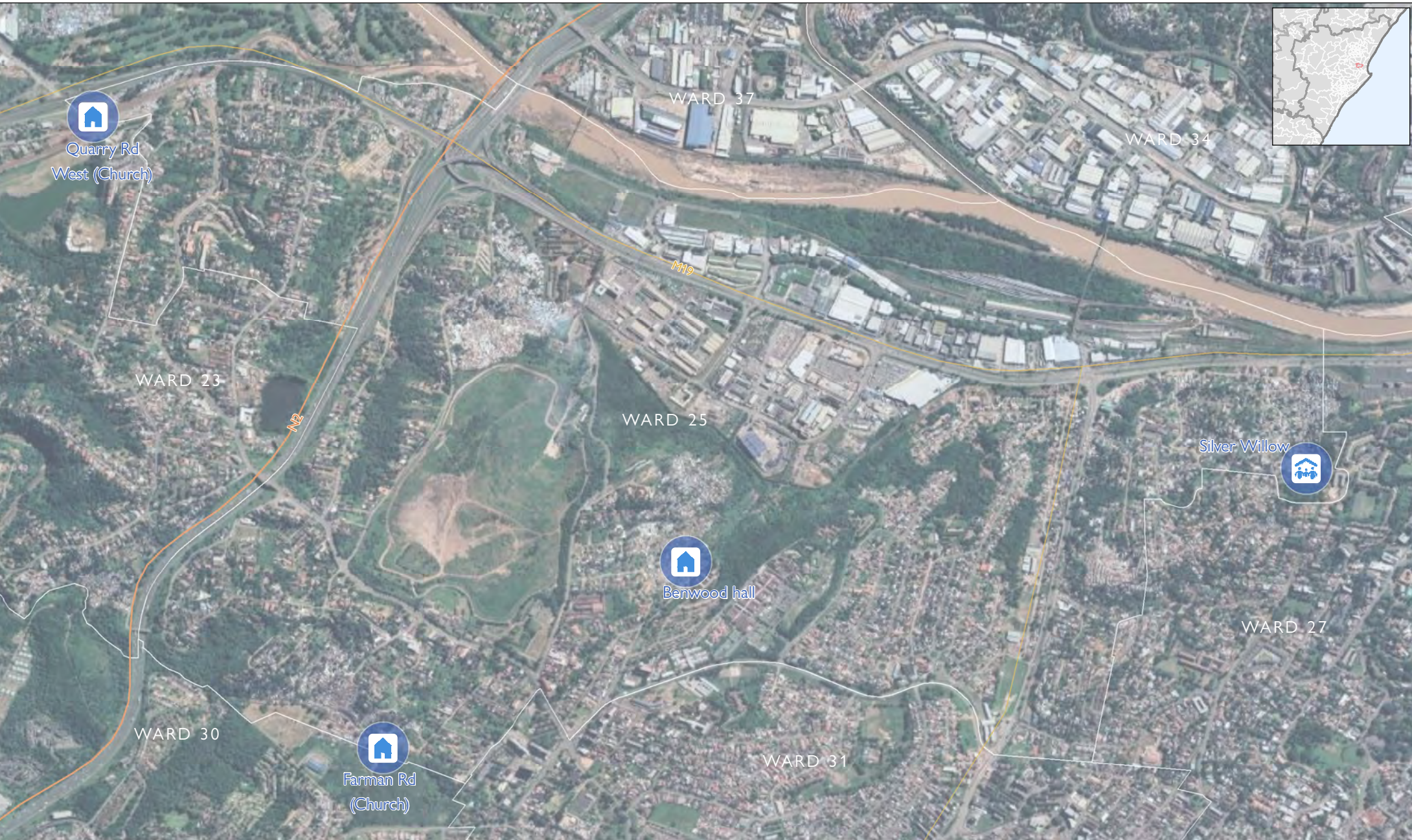
Location typologies and status:

- Primary Road
- Secondary Road
- Waterway
- Waterbody
- Care centre
- Host community
- Community building
- Education
- Healthcare
- Transport
- Sanitation
- Water point
- Industrial compound
- Livestock
- Agriculture
- Partially destroyed
- Destroyed



Source Data : ESRI, IOM, MDB, OCHA
 1:19,000 1 cm = 0 km
 Kilometers 0 0.125 0.25 0.5
 Map Production Date : 7 July 2022
 southafrica.iom.int
 iompretoria2@iom.int

 Individuals Displaced 1601 - 3,500 601 - 1,600 276 - 600 101 - 275 1 - 100	Primary Road	Care centre	Education	Sanitation	Livestock
	Secondary Road	Host community	Healthcare	Water point	Agriculture
	Waterway	Community building	Transport	Industrial compound	Partially destroyed
	Waterbody	Location typologies and status:			

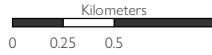


Facility, Infrastructure and Service (FIS) Mapping

eThekwini | Ward 44

1:37,000

1 cm = 0 km

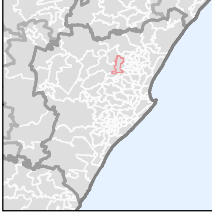


Source Data :
ESRI, IOM, MDB, OCHA

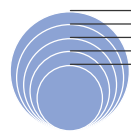
Disclaimer : This map is for illustration purposes only. The boundaries and names shown and the designations used on this map do not imply official endorsement or acceptance by the International Organization for Migration.

Map Production Date : 7 July 2022

southafrica.iom.int | iompretoria2@iom.int



Individuals Displaced



1,601 - 3,500
601 - 1,600
276 - 600
101 - 275
1 - 100

- Primary Road
- Secondary Road
- Waterway
- Waterbody

Location typologies and status:

- Care centre
- Education
- Sanitation
- Livestock
- Host community
- Healthcare
- Water point
- Agriculture
- Community building
- Transport
- Industrial compound
- Partially destroyed
- Destroyed



Individuals Displaced

- 1,601 - 3,500
- 601 - 1,600
- 276 - 600
- 101 - 275
- 1 - 100

Location typologies and status:

- Primary Road
- Secondary Road
- Waterway
- Waterbody
- Care centre
- Host community
- Community building
- Education
- Healthcare
- Transport
- Sanitation
- Water point
- Industrial compound
- Livestock
- Agriculture
- Partially destroyed
- Destroyed

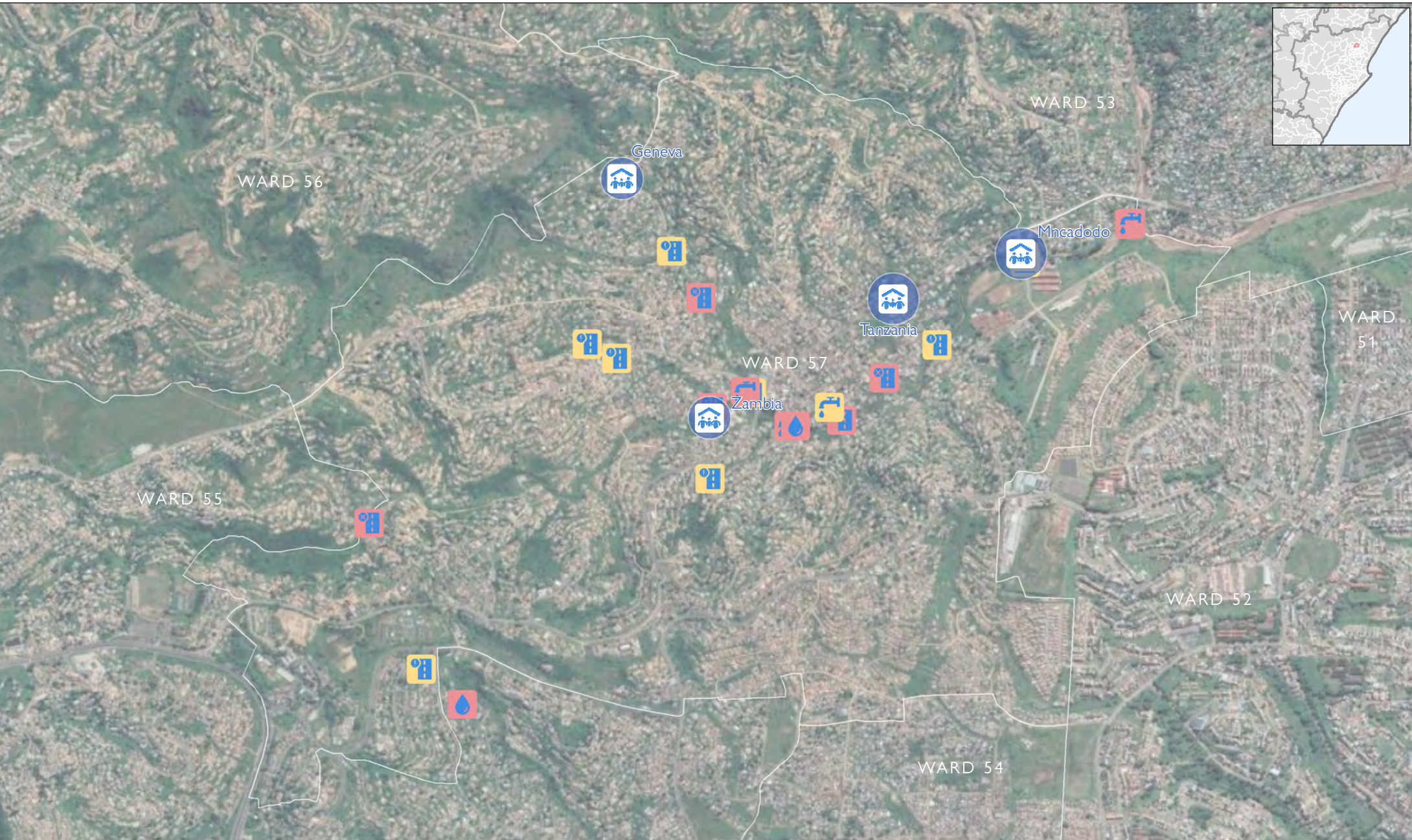


Individuals Displaced

- 1,601 - 3,500
- 601 - 1,600
- 276 - 600
- 101 - 275
- 1 - 100

Location typologies and status:

- Primary Road
- Secondary Road
- Waterway
- Waterbody
- Care centre
- Host community
- Community building
- Education
- Healthcare
- Transport
- Sanitation
- Water point
- Industrial compound
- Livestock
- Agriculture
- Partially destroyed
- Destroyed

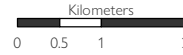


Facility, Infrastructure and Service (FIS) Mapping

eThekwini | Ward 58

1:90,000

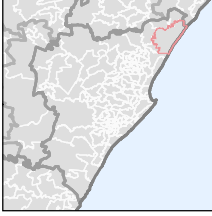
1 cm = 1 km



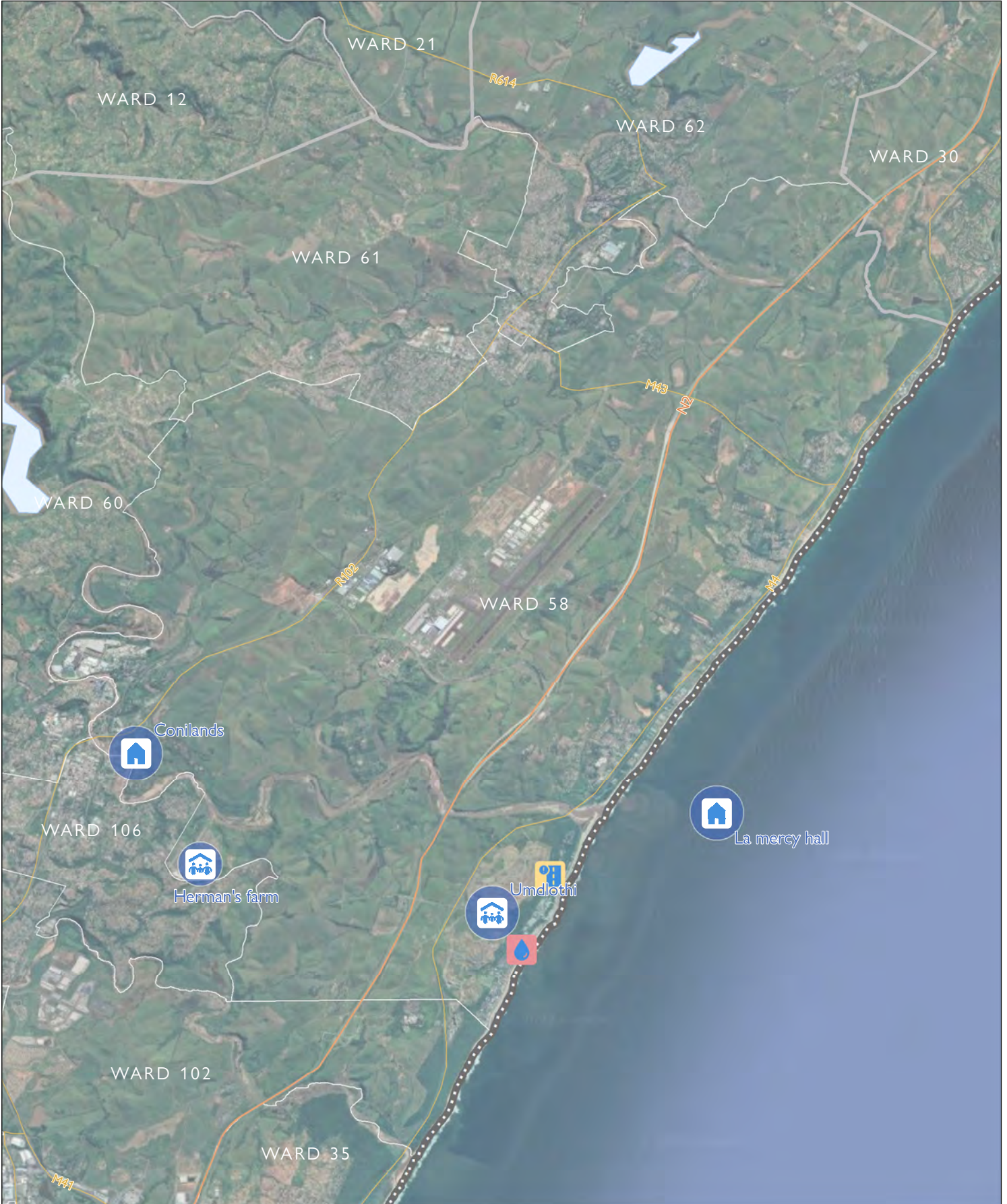
Source Data :
ESRI, IOM, MDB, OCHA

Disclaimer : This map is for illustration purposes only. The boundaries and names shown and the designations used on this map do not imply official endorsement or acceptance by the International Organization for Migration.

Map Production Date : 7 July 2022
southafrica.iom.int | iompretoria2@iom.int



<p>Individuals Displaced</p> <ul style="list-style-type: none"> 1,601 - 3,500 601 - 1,600 276 - 600 101 - 275 1 - 100 	<p>Primary Road</p>	Care centre	Education	Sanitation	Livestock
	<p>Secondary Road</p>	Host community	Healthcare	Water point	Agriculture
	<p>Waterway</p>	Community building	Transport	Industrial compound	Partially destroyed
	<p>Waterbody</p>	<p>Location typologies and status:</p>			

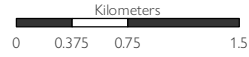


Facility, Infrastructure and Service (FIS) Mapping

eThekweni | Ward 60

1:51,000

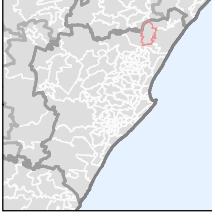
1 cm = 1 km



Source Data :
ESRI, IOM, MDB, OCHA

Disclaimer : This map is for illustration purposes only. The boundaries and names shown and the designations used on this map do not imply official endorsement or acceptance by the International Organization for Migration.

Map Production Date : 7 July 2022
southafrica.iom.int | iompretoria2@iom.int



<p>Individuals Displaced</p> <ul style="list-style-type: none"> 1,601 - 3,500 601 - 1,600 276 - 600 101 - 275 1 - 100 	<p>Primary Road</p>	Care centre	Education	Sanitation	Livestock
	<p>Secondary Road</p>	Host community	Healthcare	Water point	Agriculture
	<p>Waterway</p>	Community building	Transport	Industrial compound	<div style="background-color: #FFD700; padding: 2px;">Partially destroyed</div>
	<p>Waterbody</p>	<p>Location typologies and status:</p> <div style="background-color: #FF0000; color: white; padding: 2px;">Destroyed</div>			



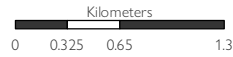
WARD 3

Facility, Infrastructure and Service (FIS) Mapping

eThekwini | Ward 62

1:47,000

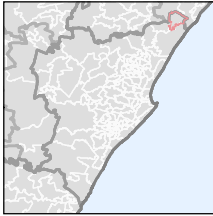
1 cm = 0 km



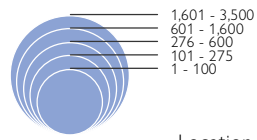
Source Data :
ESRI, IOM, MDB, OCHA

Disclaimer : This map is for illustration purposes only. The boundaries and names shown and the designations used on this map do not imply official endorsement or acceptance by the International Organization for Migration.

Map Production Date : 7 July 2022
southafrica.iom.int | iompretoria2@iom.int



Individuals Displaced



Location typologies and status:

- Primary Road
- Secondary Road
- Waterway
- Waterbody
- Care centre
- Host community
- Community building
- Education
- Healthcare
- Transport
- Sanitation
- Water point
- Industrial compound
- Livestock
- Agriculture
- Partially destroyed
- Destroyed

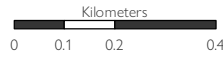


Facility, Infrastructure and Service (FIS) Mapping

eThekweni | Ward 74

1:15,000

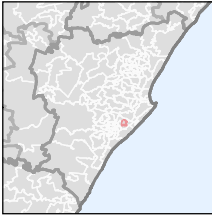
1 cm = 0 km



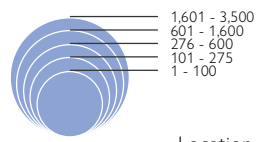
Source Data :
ESRI, IOM, MDB, OCHA

Disclaimer : This map is for illustration purposes only. The boundaries and names shown and the designations used on this map do not imply official endorsement or acceptance by the International Organization for Migration.

Map Production Date : 7 July 2022
southafrica.iom.int | iompretoria2@iom.int

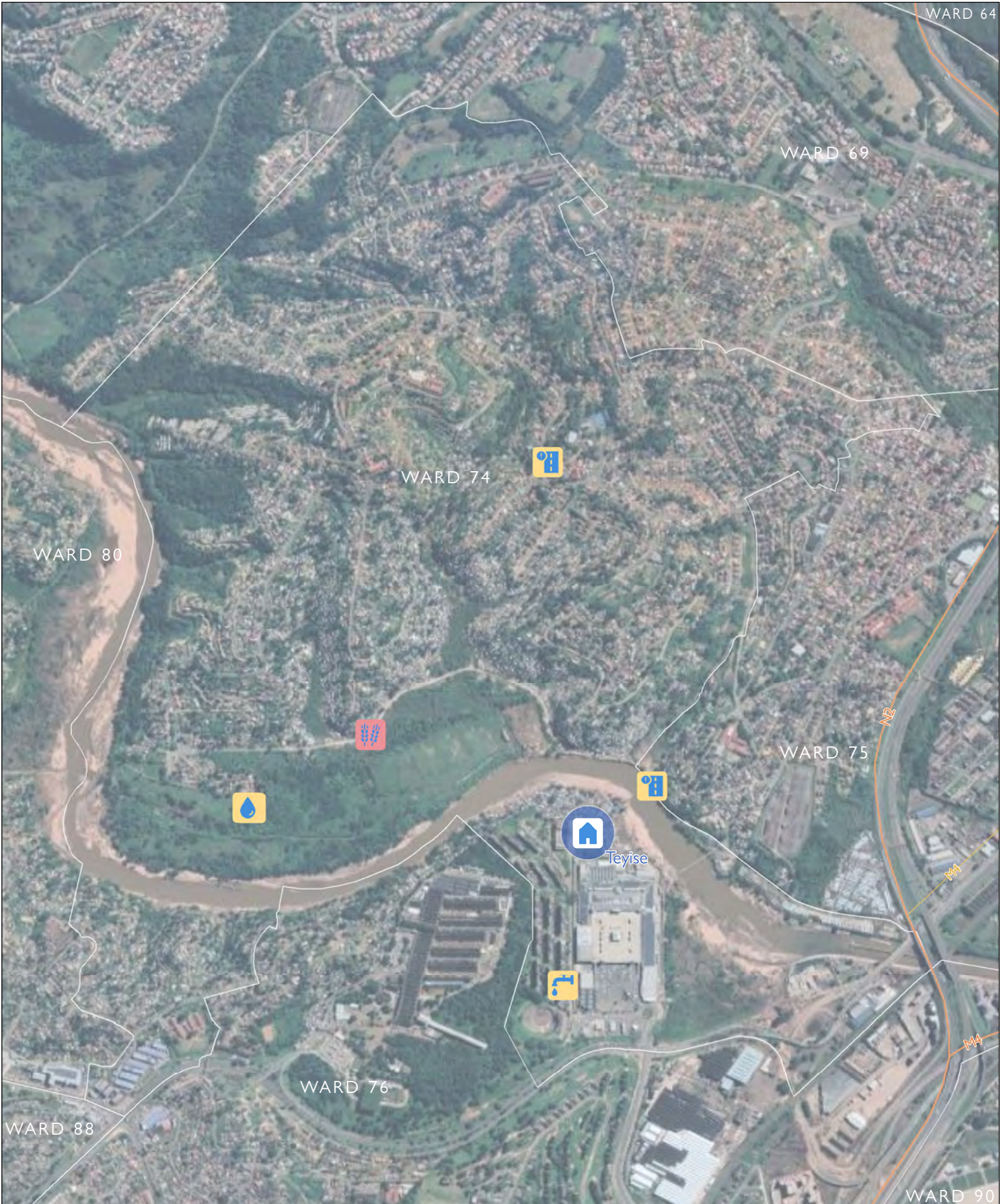


Individuals Displaced



Location typologies and status:

- | | | | | |
|----------------|--------------------|------------|---------------------|---------------------|
| Primary Road | Care centre | Education | Sanitation | Livestock |
| Secondary Road | Host community | Healthcare | Water point | Agriculture |
| Waterway | Community building | Transport | Industrial compound | Partially destroyed |
| Waterbody | | | | Destroyed |



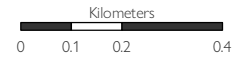


Facility, Infrastructure and Service (FIS) Mapping

eThekweni | Ward 78

Source Data : ESRI, IOM, MDB, OCHA

1:15,000 1 cm = 0 km

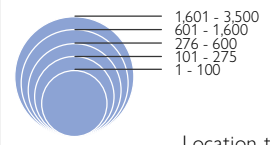


Map Production Date : 7 July 2022

Disclaimer : This map is for illustration purposes only. The boundaries and names shown and the designations used on this map do not imply official endorsement or acceptance by the International Organization for Migration.

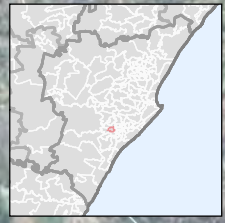
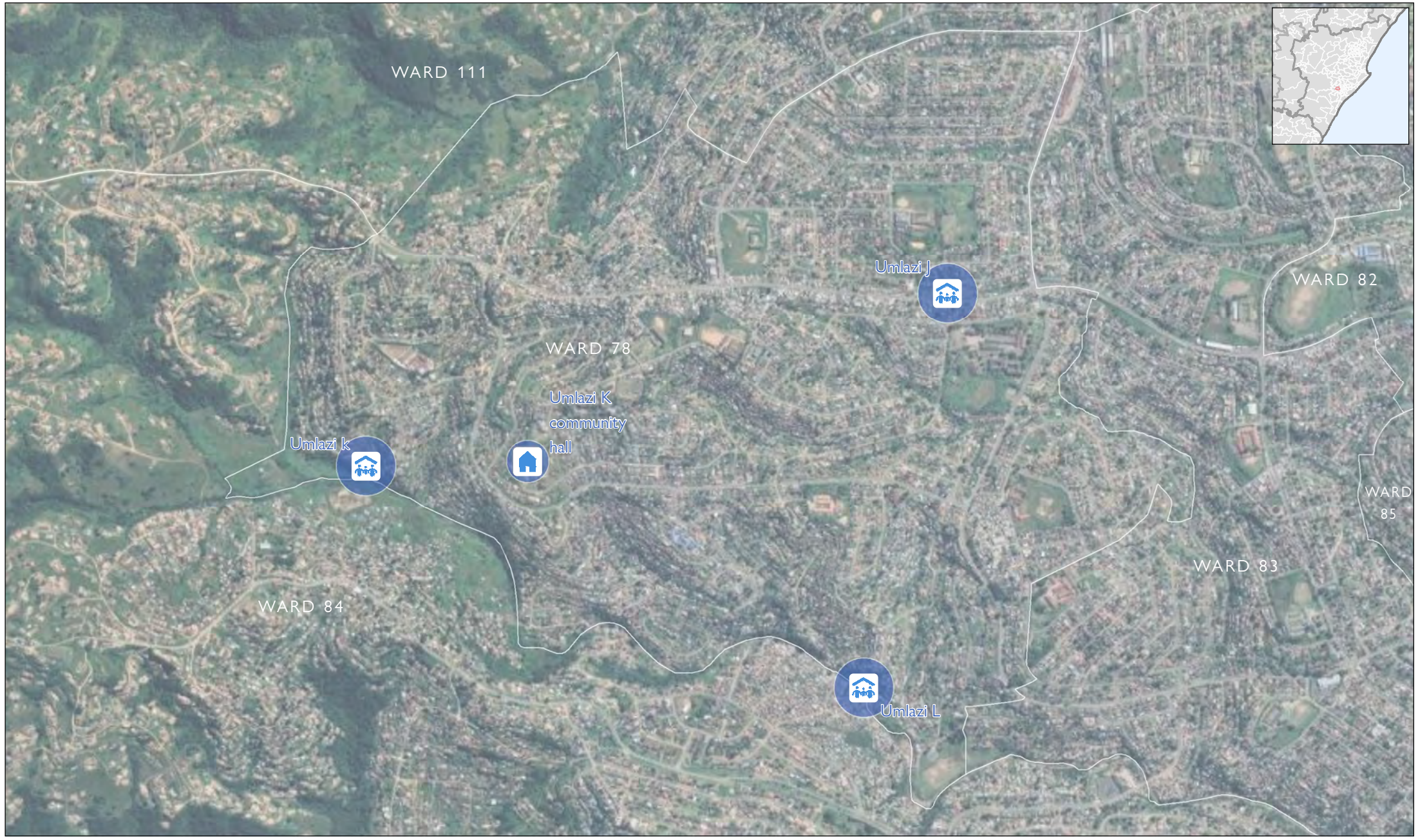
southafrica.iom.int
iompretoria2@iom.int

Individuals Displaced



- Primary Road
- Secondary Road
- Waterway
- Waterbody
- Care centre
- Host community
- Community building
- Education
- Healthcare
- Transport
- Sanitation
- Water point
- Industrial compound
- Livestock
- Agriculture
- Partially destroyed
- Destroyed

Location typologies and status:

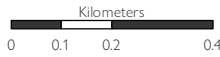


Facility, Infrastructure and Service (FIS) Mapping

eThekweni | Ward 80

1:15,000

1 cm = 0 km

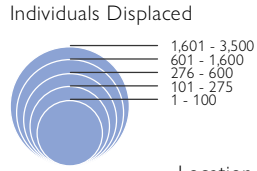
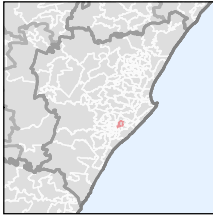


Source Data :
ESRI, IOM, MDB, OCHA

Disclaimer : This map is for illustration purposes only. The boundaries and names shown and the designations used on this map do not imply official endorsement or acceptance by the International Organization for Migration.

Map Production Date : 7 July 2022

southafrica.iom.int | iompretoria2@iom.int



- Primary Road
- Secondary Road
- Waterway
- Waterbody

Location typologies and status:

- Care centre
- Education
- Sanitation
- Livestock
- Host community
- Healthcare
- Water point
- Agriculture
- Community building
- Transport
- Industrial compound
- Partially destroyed
- Destroyed



DTM Facility, Infrastructure and Service (FIS) Mapping
 IOM • OIM THE UN MIGRATION AGENCY
 eThekweni | Ward 82

Source Data : ESRI, IOM, MDB, OCHA
 1:15,000 1 cm = 0 km
 Kilometers 0 0.1 0.2 0.4
 Map Production Date : 7 July 2022
 southafrica.iom.int
 iompretoria2@iom.int

Disclaimer : This map is for illustration purposes only. The boundaries and names shown and the designations used on this map do not imply official endorsement or acceptance by the International Organization for Migration.

Individuals Displaced

- 1,601 - 3,500
- 601 - 1,600
- 276 - 600
- 101 - 275
- 1 - 100

Location typologies and status:

- Primary Road
- Secondary Road
- Waterway
- Waterbody
- Care centre
- Host community
- Community building
- Education
- Healthcare
- Transport
- Sanitation
- Water point
- Industrial compound
- Livestock
- Agriculture
- Partially destroyed
- Destroyed

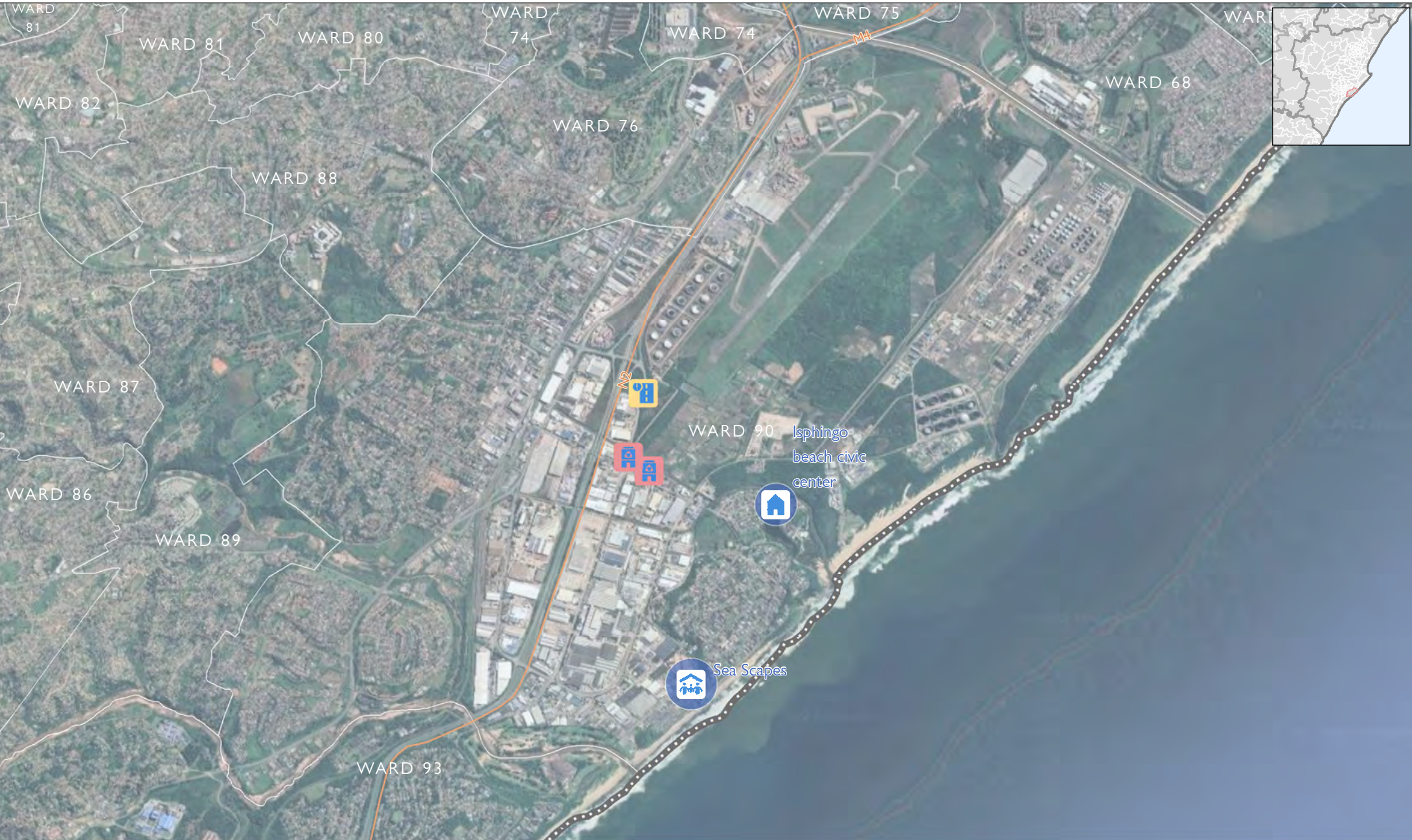


Individuals Displaced

- 1,601 - 3,500
- 601 - 1,600
- 276 - 600
- 101 - 275
- 1 - 100

Location typologies and status:

- Primary Road
- Secondary Road
- Waterway
- Waterbody
- Care centre
- Host community
- Community building
- Education
- Healthcare
- Transport
- Sanitation
- Water point
- Industrial compound
- Livestock
- Agriculture
- Partially destroyed
- Destroyed

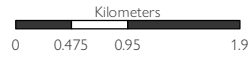


Facility, Infrastructure and Service (FIS) Mapping

eThekweni | Ward 98

1:64,000

1 cm = 1 km

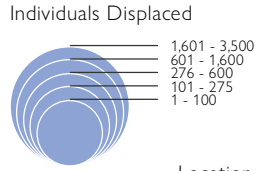
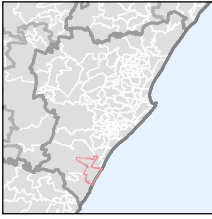


Source Data :
ESRI, IOM, MDB, OCHA

Disclaimer : This map is for illustration purposes only. The boundaries and names shown and the designations used on this map do not imply official endorsement or acceptance by the International Organization for Migration.

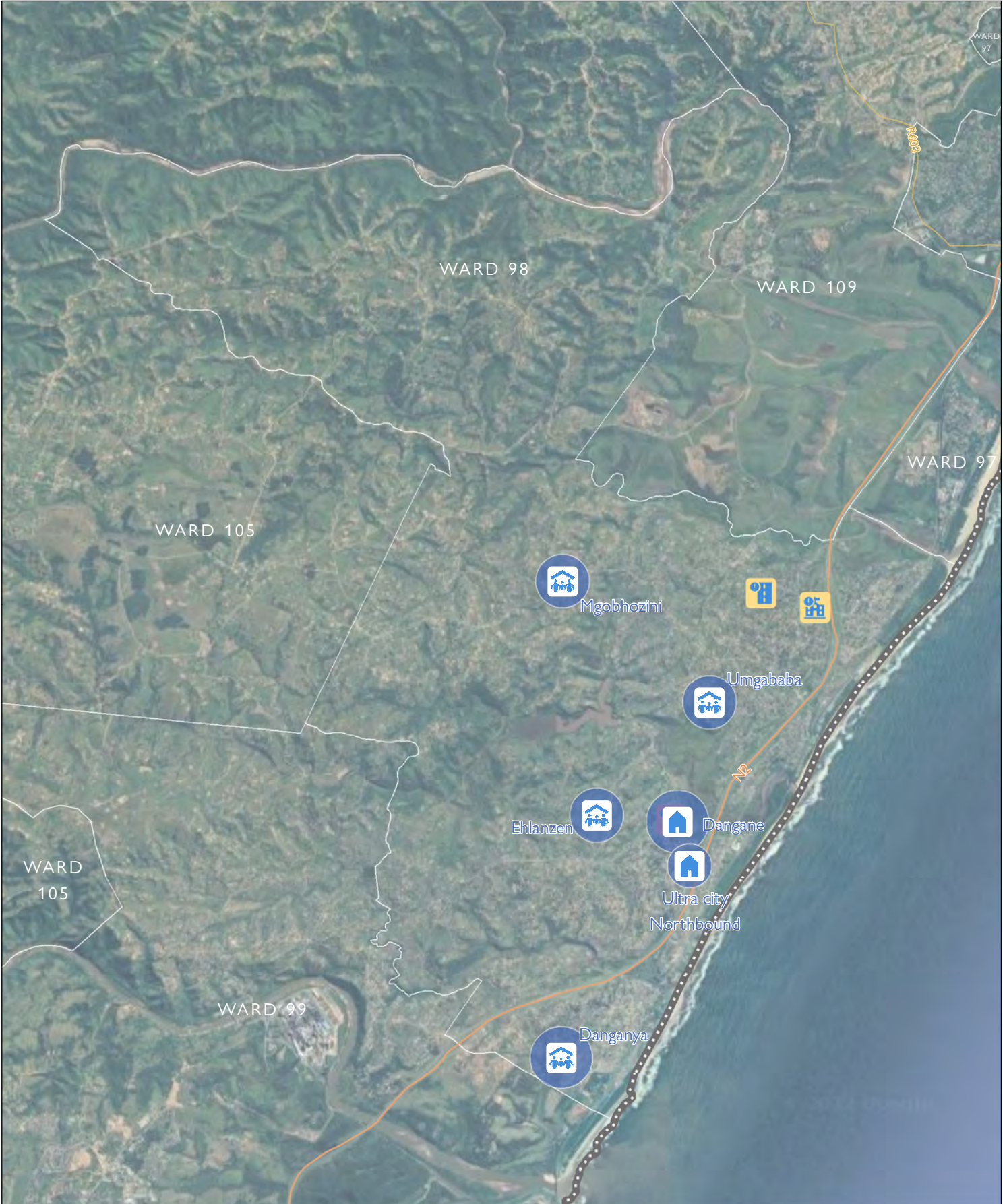
Map Production Date : 7 July 2022

southafrica.iom.int | iompretoria2@iom.int



Location typologies and status:

- | | | | | |
|----------------|--------------------|------------|---------------------|---------------------|
| Primary Road | Care centre | Education | Sanitation | Livestock |
| Secondary Road | Host community | Healthcare | Water point | Agriculture |
| Waterway | Community building | Transport | Industrial compound | Partially destroyed |
| Waterbody | | | | Destroyed |



Individuals Displaced

- 1,601 - 3,500
- 601 - 1,600
- 276 - 600
- 101 - 275
- 1 - 100

Location typologies and status:

- Primary Road
- Secondary Road
- Waterway
- Waterbody
- Care centre
- Host community
- Community building
- Education
- Healthcare
- Transport
- Sanitation
- Water point
- Industrial compound
- Livestock
- Agriculture
- Partially destroyed
- Destroyed

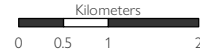


Facility, Infrastructure and Service (FIS) Mapping

eThekweni | Ward 103

1:84,000

1 cm = 1 km

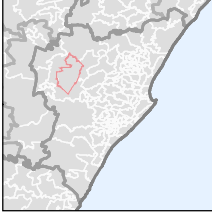


Source Data :
ESRI, IOM, MDB, OCHA

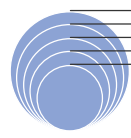
Disclaimer : This map is for illustration purposes only. The boundaries and names shown and the designations used on this map do not imply official endorsement or acceptance by the International Organization for Migration.

Map Production Date : 7 July 2022

southafrica.iom.int | iompretoria2@iom.int



Individuals Displaced



1,601 - 3,500
601 - 1,600
276 - 600
101 - 275
1 - 100

- Primary Road
- Secondary Road
- Waterway
- Waterbody

Location typologies and status:

- Care centre
- Education
- Sanitation
- Livestock
- Host community
- Healthcare
- Water point
- Agriculture
- Community building
- Transport
- Industrial compound
- Partially destroyed
- Destroyed



Individuals Displaced

- 1,601 - 3,500
- 601 - 1,600
- 276 - 600
- 101 - 275
- 1 - 100

Location typologies and status:

- Primary Road
- Secondary Road
- Waterway
- Waterbody
- Care centre
- Host community
- Community building
- Education
- Healthcare
- Transport
- Sanitation
- Water point
- Industrial compound
- Livestock
- Agriculture
- Partially destroyed
- Destroyed

