

ETT Report : No. 284 | II — 17 July 2022

NUMBER OF NEW ARRIVALS

NEW ARRIVALS SCREENING BY NUTRITION PARTNERS



1,061 Children (6 - 59 months) screened for malnutrition
MUAC category of screened children

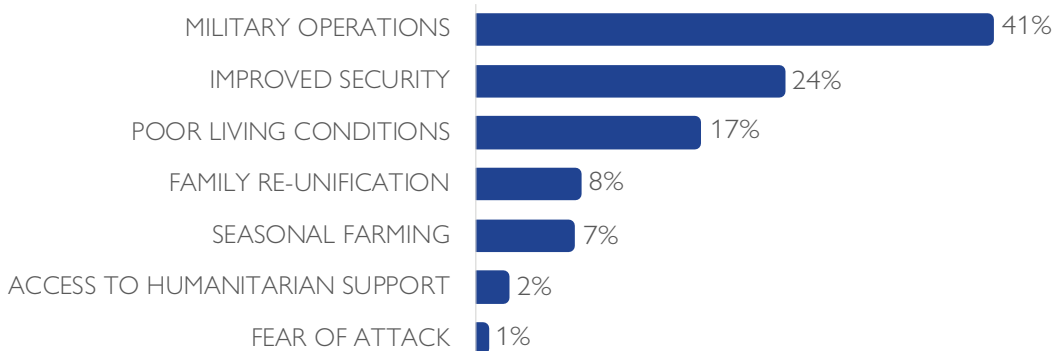


The DTM Emergency Tracking Tool (ETT) is deployed to track and to collect information on large and sudden population movements, provide frequent updates on the scale of displacement and quantify the affected population when needed. As a sub-component of the Mobility Tracking methodology in Nigeria, ETT utilises direct observation and a broad network of key informants to capture best estimates of the affected population per location, enabling targeted humanitarian response planning.

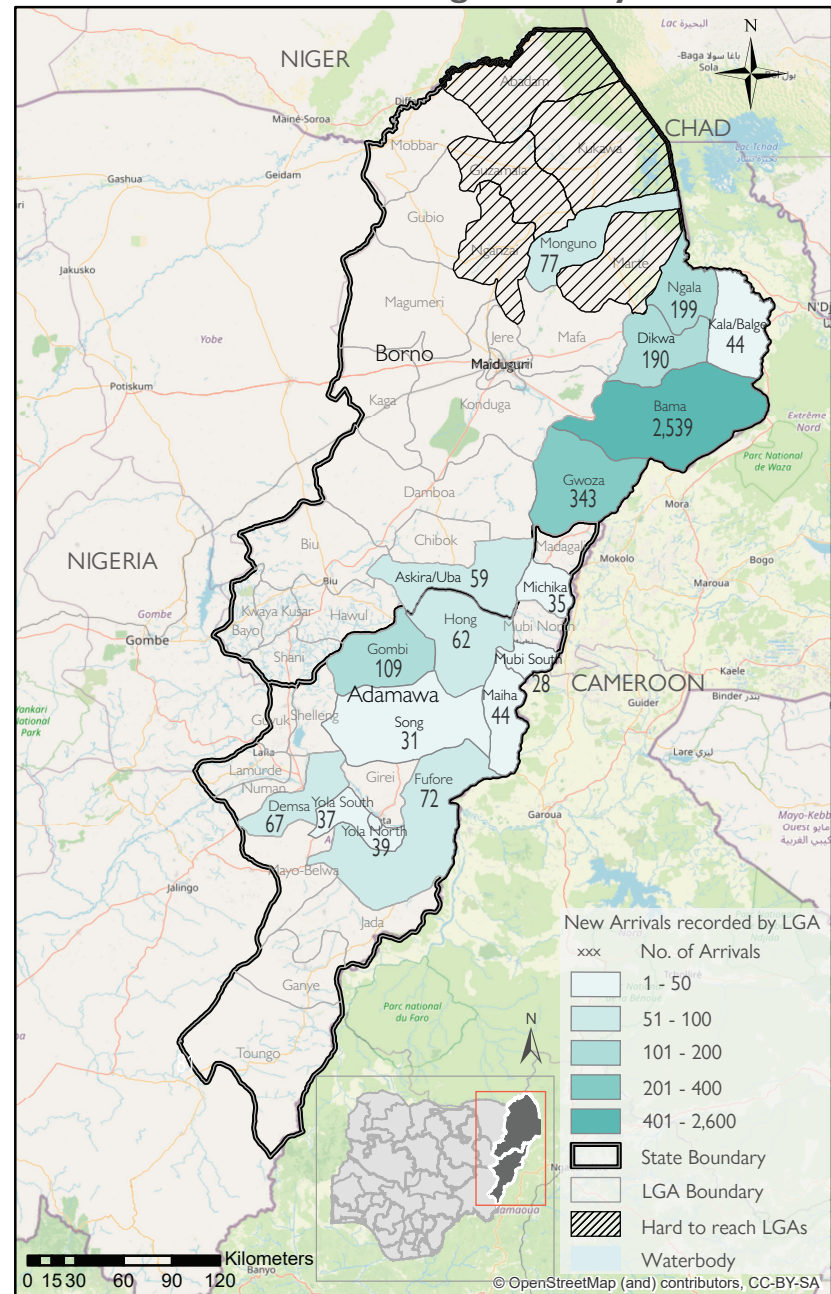
Between 11 and 17 July 2022, a total of 3,975 new arrivals were recorded in Adamawa and Borno States. The new arrivals were recorded at locations in Askira/Uba, Bama, Dikwa, Gwoza, Kala Balge, Monguno and Ngala Local Government Areas (LGAs) of the most conflict-affected state of Borno and in Demsa, Fufore, Gombi, Hong, Maiha, Michika, Mubi South, Song, Yola North and Yola South LGAs of Adamawa State.

ETT assessments identified the following movement triggers: military operations (1,616 individuals or 41%), improved security (959 individuals or 24%), poor living conditions (689 individuals or 17%), family re-unification (314 individuals or 8%), seasonal farming (292 individuals or 7%), access to humanitarian support (85 individuals or 2%) and fear of attack (20 individuals or 1%).

PERCENTAGE OF INDIVIDUALS BY MOVEMENT TRIGGER



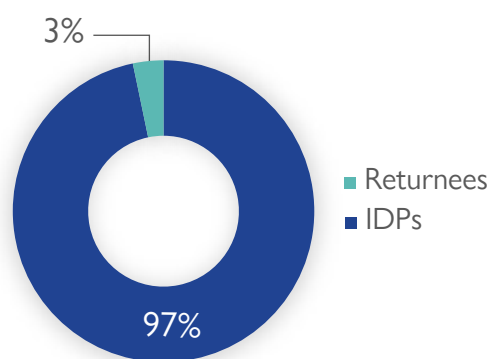
New arrivals registered by LGA



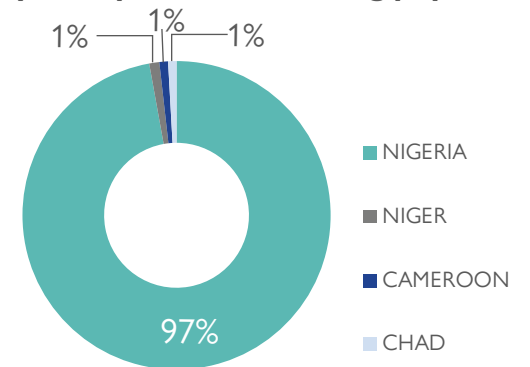
The depiction and use of boundaries, geographic names, and related data shown on maps and included in this report are not warranted to be error-free, nor do they imply a judgment on the legal status of any territory or any endorsement or acceptance of such boundaries by IOM

* Movements in Kala/Balge were captured by ETT outreach staff in the LGA

Affected population



Country of departure of arriving population



SUMMARY OF MAJOR NEW ARRIVALS

Bama: Two thousand five hundred and thirty-nine (2,539) new arrivals were recorded in Bama LGA of Borno State. Ninety-seven per cent of the arrivals came from hard-to-reach/inaccessible locations within Bama LGA (Abiri Kura/Yabiri Gana/Chongolo, Andara/Ajiri/Wulga, Dipchari/Jere/Dar-jamal/Kotembe, Gulumba/Jukkuri/Batra and Kumshe/Nduguno wards) and 3 per cent from Konduga LGA (Hajj Camp in Auno/Chabbol ward) of Borno State.

Gwoza: Three hundred and forty-three (343) new arrivals were recorded in Gwoza LGA of Borno State. Ninety-three per cent of the arrivals were from hard-to-reach/inaccessible locations within Gwoza LGA of Borno State and 7 per cent of the arrivals were from hard-to-reach/inaccessible locations in Bama LGA of Borno State.

Ngala: One hundred and ninety-nine (199) new arrivals were recorded in Dikwa LGA of Borno State. All new arrivals were from Konduga LGA in Borno State.

Dikwa: One hundred and ninety (190) new arrivals were recorded in Dikwa LGA of Borno State. All new arrivals were from hard-to-reach/inaccessible locations in Sogoma/Afuye Ward of Dikwa LGA in Borno State.

Table 1. Details of new arrivals by locations of departure — only movements with at least 15 persons are listed below

Arrival Location			Location of Departure			NO. OF INDIVIDUALS
STATE	LGA	WARD	STATE	LGA	WARD	
ADAMAWA	DEMSA	DEMSA	ADAMAWA	LAMURDE	LAMURDE	22
		DILLI	ADAMAWA	GIREI	WURO DOLE	27
		NASSARAWO DEMSA	ADAMAWA	YOLA NORTH	JAMBTU	18
	FUFORE	BETI	ADAMAWA	YOLA SOUTH	ADARAWO	25
		PARIYA	ADAMAWA	GIREI	GIREI I	16
	GOMBI	GOMBI NORTH	ADAMAWA	GIREI	WURO DOLE	31
			ADAMAWA	HONG	SHANGUI	41
			ADAMAWA	MADAGALI	MADAGALI	19
	HONG	DAKSIRI	BORNO	GWOZA	GWOZA TOWN GADAMAYO	49
			ADAMAWA	MAIHA	BELEL	33
	MAIHA	HILDI	ADAMAWA	HONG	SHANGUI	29
			ADAMAWA	HONG	BANSHIKA	28
	MICHIKA	BELEL	ADAMAWA	YOLA NORTH	NASSARAWO	16
			ADAMAWA	GOMBI	GOMBI NORTH	15
	MUBI SOUTH	SORAU A	ADAMAWA	MADAGALI	GULAK	20
			ADAMAWA	MADAGALI	HYAMBULA	28
SONG	MUJARA	ADAMAWA	HONG	SHANGUI	31	
BORNO	ASKIRA/UBA	NGOHI	BORNO	CHIBOK	MBALALA	19
		WAMDEO/GIWI	ADAMAWA	GIREI	MODIRE/MINIKILANG	27
	BAMA	BUDUWA / BULA CHIRABE	BORNO	BAMA	KUMSHE/NDUGUNO	219
			BORNO	BAMA	ANDARA/AJIRI/WULBA	630
			BORNO	KONDUGA	AUNO/CHABBOL	74
			BORNO	BAMA	GULUMBA/JUKKURI/BATRA	319
			BORNO	BAMA	YABIRI KURA/YABIRI GANA/CHONGOLO	1,297
	DIKWA	DIKWA	BORNO	DIKWA	SOGOMA/AFUYE	190
	GWOZA	GWOZA WAKANE/BULABULIN	BORNO	GWOZA	HAMBAGDA/LIMAN KARA/NEW SETTLEME	49
			BORNO	GWOZA	GUDUF NAGADIYO	21
			BORNO	BAMA	DIPCHARI/JERE/DA-JAMAL/KOTEMBE	24
			BORNO	GWOZA	DURE/WALA/WARABE	60
	KALA BALGE	RANN A	BORNO	GWOZA	JOHODE/CHIKIDE/KUGHUM	172
			CAMEROON	MARWA	MAKARI	36
	MONGUNO	MONGUNO	NIGER	DIFFA	DIFFA	17
			NIGER	DIFFA	GESKEROU	25
CHAD			BOLE	SILLAH	35	
NGALA	NGALA	BORNO	KONDUGA	AUNO/CHABBOL	199	

NEW ARRIVAL MALNUTRITION SCREENING SUMMARY (CHILDREN 6 — 59 MONTHS)

Between 11 and 17 July 2022, an exhaustive nutrition screening using Mid-Upper Arm Circumference (MUAC) and oedema for acute malnutrition was conducted by sector partners for 528 children of 6-59 months. Of the 1,061 children screened, the MUAC reading indicated that 124 children were recorded in the red category, 136 children in the yellow category and 801 children in the green category. No case of oedema was reported in the six LGAs assessed.

Among the 1,061 children screened, 85 children arrived from neighbouring countries (10 in Kala Balge LGA, 23 in Monguno LGA and 52 in Monguno LGA); of all the 85 children measured; 18 were in red, 54 in green and 13 were in yellow. All children found with acute malnutrition have been admitted in the treatment programme.

Please note, the data presented above are not surveillance results and should be interpreted with caution.

Breakdown of MUAC reading by category

LGA	MUAC Category						Total
	Green (≥12.5cm)		Yellow (11.5cm - 12.5cm)		Red (<11.5cm)		
	Inaccessible	Accessible	Inaccessible	Accessible	Inaccessible	Accessible	
Bama	450	0	96	0	72	0	618
Dikwa	98	155	5	8	13	3	282
Gwoza	37	3	13	1	17	1	72
Kala/Balge	0	11	0	2	0	1	14
Monguno	0	17	0	2	0	4	23
Ngala	0	30	0	9	0	13	52
Total	585	216	114	22	102	22	1,061

■ Nourished
 ■ Moderate Acute Malnutrition (MAM)
 ■ Severe Acute Malnutrition (SAM)

When quoting, paraphrasing, or in any way using the information mentioned in this report, the source needs to be stated appropriately as follows: "Source: Displacement Tracking Matrix (DTM) of the International Organization for Migration, Nigeria Mission, July 2022".

For more information or to report an alert, please contact: DTM Nigeria: iomnigeriadtm@iom.int

<https://displacement.iom.int/nigeria> ; <https://dtm.iom.int/nigeria>