

# SITUATION ASSESSMENT REPORT

REPORT 1: 20 JULY 2022 | Data collection: 18 May 2022

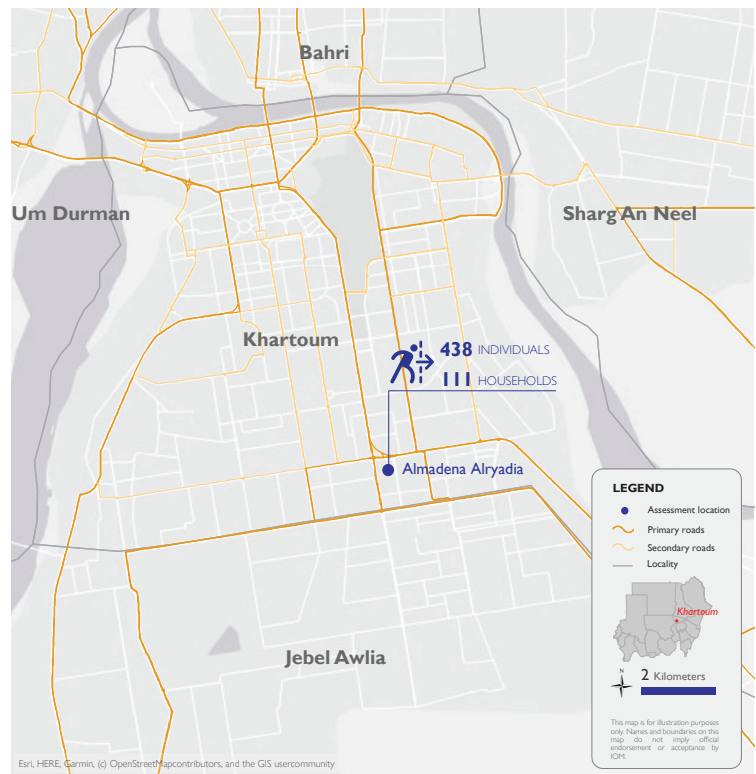
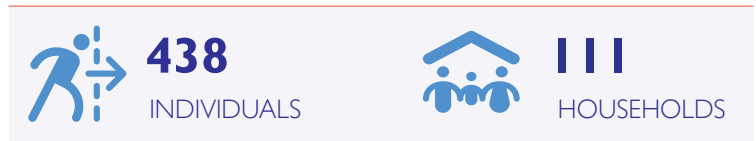
Almadena Alryadia, Khartoum

DTM Situation Assessments are implemented to collect data on populations in non-emergency settings or protracted situations caused by conflict or natural disaster. As a subcomponent of the Mobility Tracking methodology in Sudan (Round Four), Situation Assessments utilize a broad network of key informants to provide an overview of the context by capturing best estimates of the affected population presence per area – a useful tool for humanitarian response planning and design.

## Situation Overview

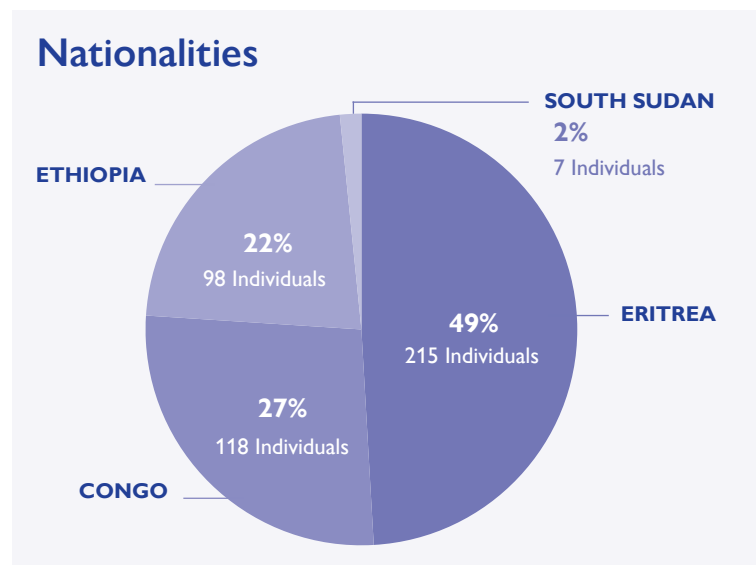
DTM teams piloted the implementation of a Situation Assessment within Almadena Alryadhia in Khartoum locality, Khartoum state. In total, DTM Sudan estimates that there are currently 438 foreign nationals (making up 111 households) living within this location (100%). Field teams indicate that much of the foreign national caseload had originally arrived to Sudan as labour migrants, and became destitute after the economic lockdown led to a lack of employment opportunities – which in turn led to homelessness. Field teams also indicate other prominent reasons cited by the foreign national caseload for arriving in Sudan included conflict, as well as racial and religious persecution.

Field teams report that foreign nationals of Congolese, Ethiopian, Eritrean and South Sudanese descent have been residing in open area settlements of Almadena Alryadhia since 14 December 2020. At that time, field teams estimated that the total of residents residing in the location totalled 760 individuals (189 households). Field teams report that since 2020, some residents travelled to other locations in Sharg An Neel locality (typically those of Eritrean and Ethiopian descent), Mayo neighbourhood in Khartoum locality (typically those of Congolese, South Sudanese, and Central African descent), and Bentiu camp in Jebel Awlia locality (typically those of South Sudanese descent).



**During data collection, field teams reported that there were:**

- An undisclosed number of robberies of personal belongings.
- An undisclosed number being subject to racial discrimination.
- Sexual assaults have reportedly taken place in the location.



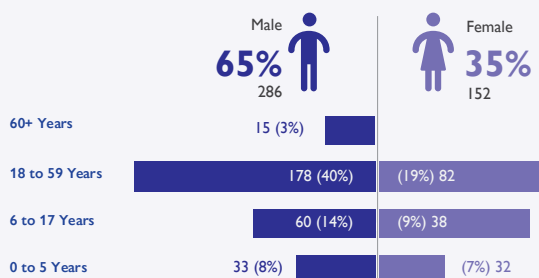
## Shelter Indicator

Through its Shelter Indicator, DTM identified that all foreign nationals are residing in informal open area settlements.



## Sex and Age Disaggregated Data

Of the total foreign national caseload an estimated 65% were male, and 35% were female. Further disaggregation by age indicates 18 to 59 as the predominant age category (40% male, 19% female), followed by ages 6 to 17 (14% male, 9% female), 0 to 5 (8% male, 7% female), and 60 and over (3% male, 0% female).



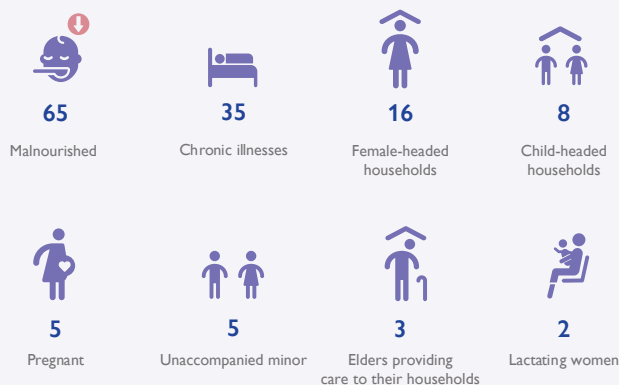
## Priority Needs

Ranking scale



## Protection

DTM teams identified at least 139 significant vulnerabilities in need of assistance and support. Malnourished individuals and the chronically ill made up 47% and 25% respectively, followed by female-headed households (12%), child-headed households (6%), pregnant women (4%), unaccompanied minors (4%), elders providing care to households (2%), and lactating women (1%). Additionally, DTM Sudan estimates that there are approximately 66 persons with disabilities among the residents.\*



## Return Intentions

Data collected by the Return Intentions Indicator reports that the entire foreign national caseload wish to move to a third location (100%).

### IOM DISCLAIMER

The opinions expressed in the report are those of the authors and do not necessarily reflect the views of the International Organization for Migration (IOM). The designations employed and the presentation of material throughout the report do not imply the expression of any opinion whatsoever on the part of IOM concerning the legal status of any country, territory, city or area, or of its authorities, or concerning its frontiers or boundaries.

IOM is committed to the principle that humane and orderly migration benefits migrants and society. As an intergovernmental organization, IOM acts with its partners in the international community to: assist in the meeting of operational challenges of migration; advance understanding of migration issues; encourage social and economic development through migration; and uphold the human dignity and well-being of migrants.

\* DTM Sudan subscribes to the WHO global estimate that approximately 15% of the population are Persons with Disabilities (PwDs).