

The DTM Emergency Event Tracking (EET) is deployed to track sudden displacement and population movements, provide more frequent updates on the scale of displacement, and quantify the affected population when needed. As a subcomponent of the new Mobility Tracking methodology in Sudan ([Round Three](#)), and activated on a need basis, EET utilises a broad network of key informants to capture best estimates of the affected population presence per location – a useful tool for humanitarian response planning and design.

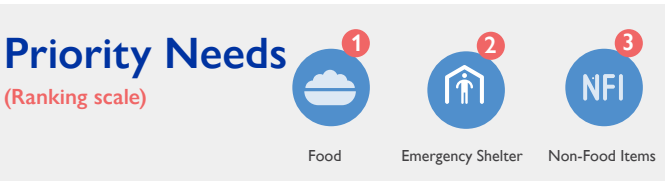
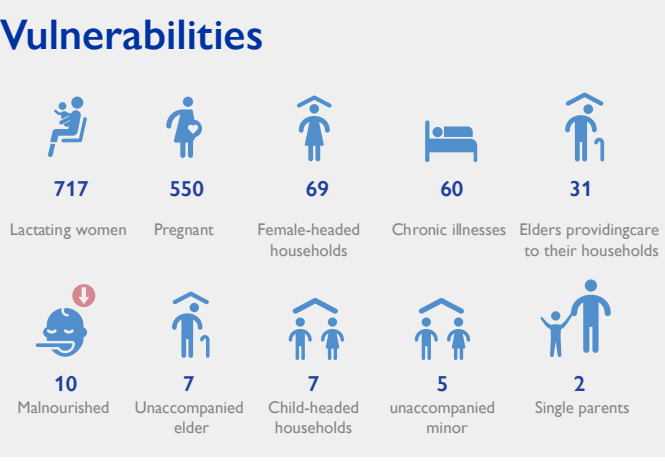
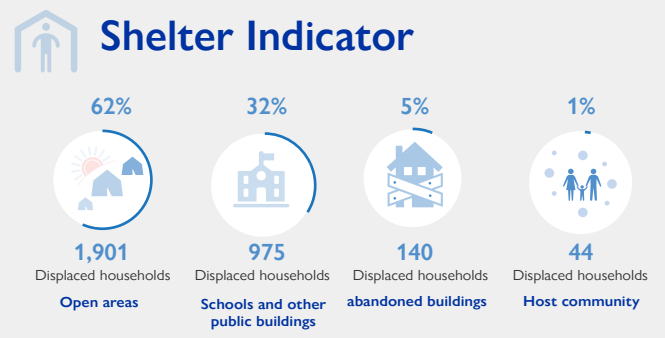
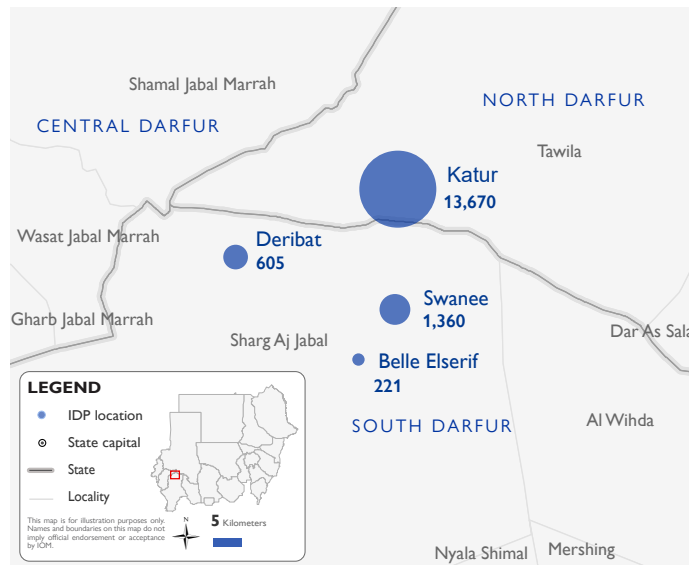
Event Overview



DTM Teams activated EET to monitor displacement resulting from clashes between two factions of the Sudanese Liberation Army in Sharg Aj Jabal, South Darfur on 27 June 2022 over an issue of land ownership.

The first EET update estimates a total number of 15,856 IDPs individuals (3,060 households) currently seeking shelter in Katur village (86%) in Tawila locality, North Darfur, and Swanee (9%), Korny (4%), and Belle Elserif (1%) villages in Sharg Aj Jabal, South Darfur. The IDP caseload was originally displaced from 27 villages across Sharg Aj Jabal locality (82%), as well as five villages across Tawila locality (18%).

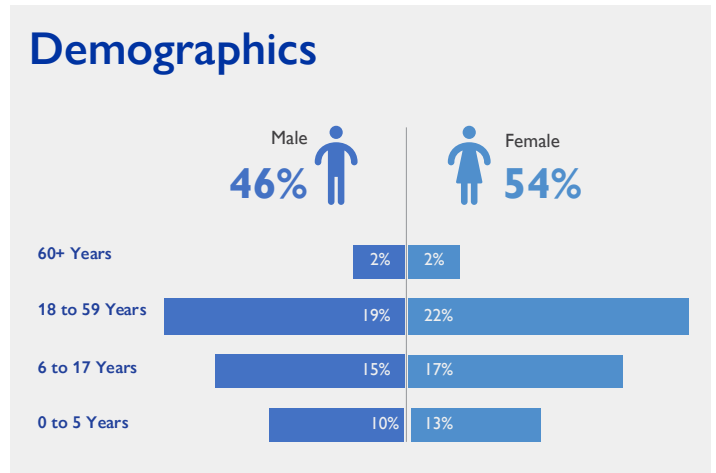
DTM field teams have confirmed that at least one individual was killed with no individuals sustaining injuries, and a total of 3,448 individuals report lost goods, livestock, and/or cattle. All displaced individuals are Sudanese nationals. At least 1,458 cases of additional vulnerabilities in need of assistance and support were identified by key informants through DTM's Protection indicator. Additionally, DTM Sudan estimates that there are approximately 2,378 persons with disabilities among the IDP caseload.* Based on a ranking scale, the three priority needs across the caseload are Food, Emergency Shelter, and Non-Food Items.



IOM DISCLAIMER

The opinions expressed in the report are those of the authors and do not necessarily reflect the views of the International Organization for Migration (IOM). The designations employed and the presentation of material throughout the report do not imply the expression of any opinion whatsoever on the part of IOM concerning the legal status of any country, territory, city or area, or of its authorities, or concerning its frontiers or boundaries.

IOM is committed to the principle that humane and orderly migration benefits migrants and society. As an intergovernmental organization, IOM acts with its partners in the international community to: assist in the meeting of operational challenges of migration; advance understanding of migration issues; encourage social and economic development through migration; and uphold the human dignity and well-being of migrants.



Return Intention

Data collected through the return intention indicator estimates that the 15,635 IDPs (99%) of the IDP caseload intend to return to their location of origin upon improvement of the security situation, with the remaining 221 IDPs (1%) intending to remain in their current locations.

*DTM Sudan adopts the WHO global estimate that approximately 15% of the total population are persons with disabilities (PwD).