

**EMERGENCY EVENT TRACKING**

Data collection: 29 June 2022



The DTM Emergency Event Tracking (EET) is deployed to track sudden displacement and population movements, provide more frequent updates on the scale of displacement, and quantify the affected population when needed. As a subcomponent of the new Mobility Tracking methodology in Sudan (Round Three), and activated on a need basis, EET utilises a broad network of key informants to capture best estimates of the affected population presence per location – a useful tool for humanitarian response planning and design.

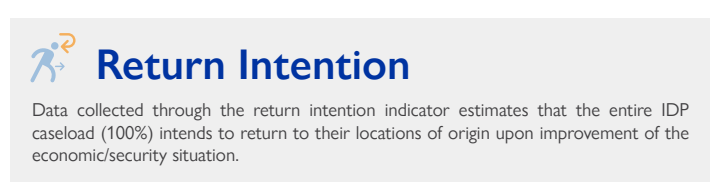
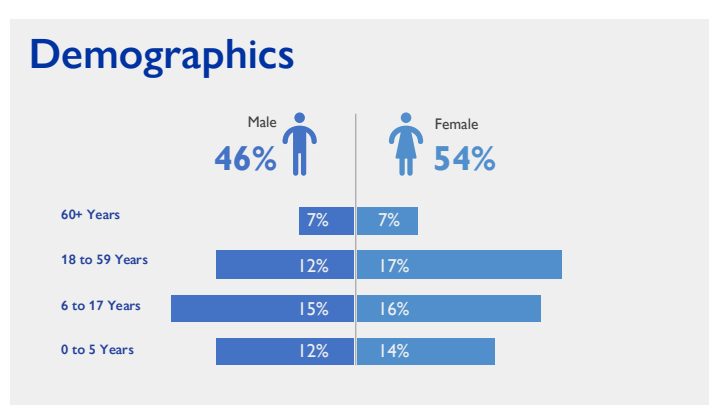
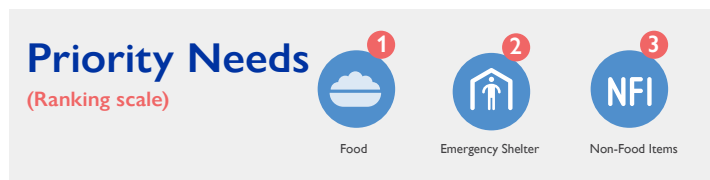
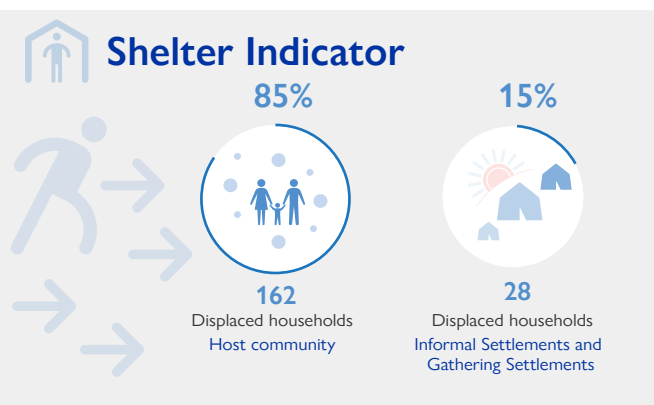
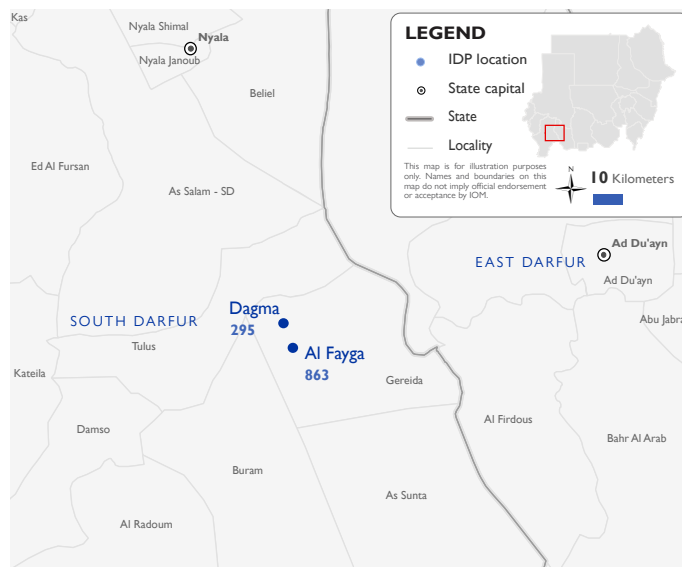
## Event Overview



DTM teams activated EET to monitor the displacement of individuals affected by inter-communal clashes on 24 June 2022 between Masalit and Falata tribes in Umrakoba Village in Tulus locality, South Darfur following a dispute over land which led to the death of a member of Falata tribe.

The first EET update estimates a total number of 1,158 individuals (190 households) currently seeking shelter in Al Fayga (75%) and Dagma (25%) villages in Gereida locality, South Darfur. The IDP caseload was originally displaced from Abu Jabra (75%) and Dika (25%) villages in Tulus locality, South Darfur.

DTM field teams have confirmed that at least four individuals were killed with a further three individuals sustaining injuries. No individuals reported lost goods, livestock, and/or cattle. All displaced individuals are Sudanese nationals. At least 78 cases of additional vulnerabilities in need of assistance and support were identified by key informants through DTM's Protection indicator. Additionally, DTM Sudan estimates that there are approximately 174 persons with disabilities among the IDP caseload. Based on a ranking scale, the three priority needs across the caseload are Food, Emergency Shelter, and Non-Food Items.



**IOM DISCLAIMER**

The opinions expressed in the report are those of the authors and do not necessarily reflect the views of the International Organization for Migration (IOM). The designations employed and the presentation of material throughout the report do not imply the expression of any opinion whatsoever on the part of IOM concerning the legal status of any country, territory, city or area, or of its authorities, or concerning its frontiers or boundaries.

IOM is committed to the principle that humane and orderly migration benefits migrants and society. As an intergovernmental organization, IOM acts with its partners in the international community to: assist in the meeting of operational challenges of migration; advance understanding of migration issues; encourage social and economic development through migration; and uphold the human dignity and well-being of migrants.

\*DTM Sudan adopts the WHO global estimate that approximately 15% of the total population are persons with disabilities (PwD).