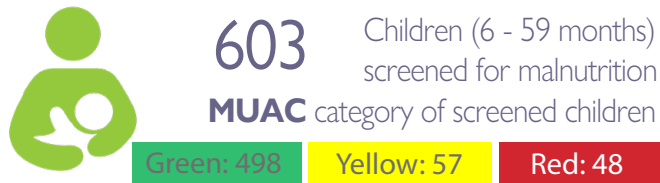


## ETT Report : No. 281 | 20 — 26 June 2022

### NUMBER OF NEW ARRIVALS

### NEW ARRIVALS SCREENING BY NUTRITION PARTNERS

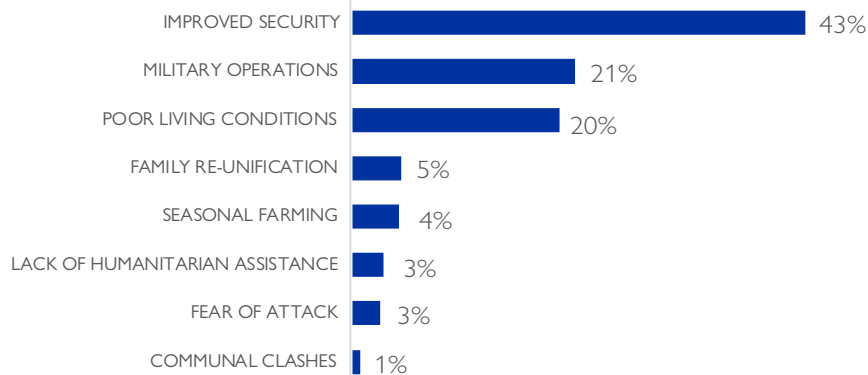


The DTM Emergency Tracking Tool (ETT) is deployed to track and to collect information on large and sudden population movements, provide frequent updates on the scale of displacement and quantify the affected population when needed. As a sub-component of the Mobility Tracking methodology in Nigeria, ETT utilises direct observation and a broad network of key informants to capture best estimates of the affected population per location, enabling targeted humanitarian response planning.

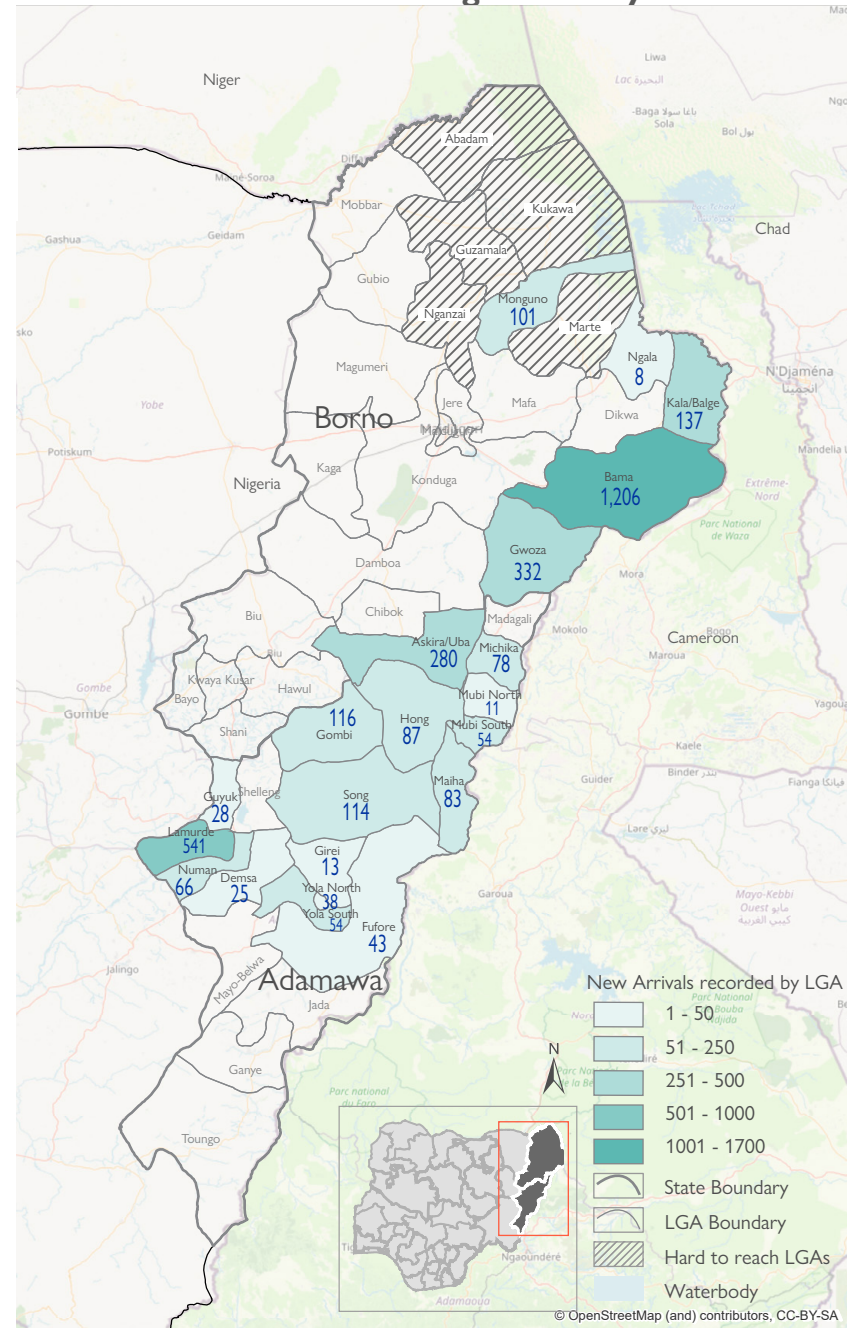
Between 20 and 26 June 2022, a total of 3,709 new arrivals were recorded in Adamawa and Borno States. The new arrivals were recorded at locations in Askira/Uba, Bama, Damboa, Gwoza, Kala Balge, Monguno and Ngala Local Government Areas (LGAs) of the most conflict-affected state of Borno and in Demsa, Fufore, Girei, Gombi, Guyuk, Hong, Lamurde, Maiha, Michika, Mubi South, Numan, Song, Yola North and Yola South LGAs of Adamawa State.

ETT assessments identified the following movement triggers: improved security (1,611 individuals or 43%), military operations (792 individuals or 21%), poor living conditions (735 individuals or 20%), family re-unification (173 individuals or 5%), seasonal farming (165 individuals or 4%), lack of humanitarian assistance (110 individuals or 3%), fear of attacks (98 individuals or 3%), and communal clashes (25 individuals or 1%).

### PERCENTAGE OF INDIVIDUALS BY MOVEMENT TRIGGER



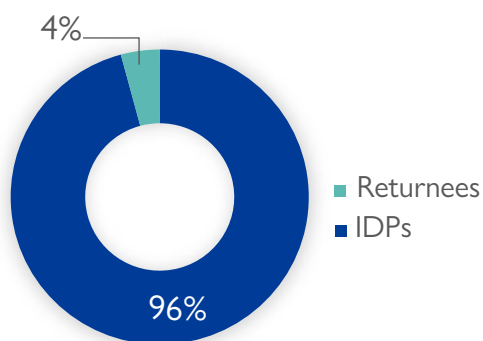
### New arrivals registered by LGA



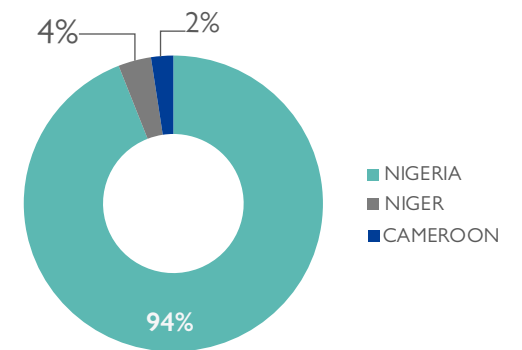
The depiction and use of boundaries, geographic names, and related data shown on maps and included in this report are not warranted to be error-free, nor do they imply a judgment on the legal status of any territory or any endorsement or acceptance of such boundaries by IOM

\* Movements in Kala/Balge were captured by ETT outreach staff in the LGA

### Affected population



### Country of departure of arriving population



### SUMMARY OF MAJOR NEW ARRIVALS

**Bama:** One thousand two hundred and six (1,206) new arrivals were recorded in the camps in Bama LGA of Borno State. The arrivals came from inaccessible locations in Bama LGA (Andara/Ajiri/Wulga, Dipchari/Jere/Dar-jamal/kotembe and Sabsabwa/Soye/Bulongu).

**Lamurde:** Five hundred and forty one (541) new arrivals were recorded in Lamurde LGA of Adamawa State. The arrivals were from Boshikiri in Guyuk LGA in Adamawa state and the movements were out of fear of future attacks after the communal clashes that took place on 06 June 2022 in Boshikiri Ward of Lamurde LGA.

**Gwoza:** Three hundred and thirty two (332) new arrivals were recorded in Gwoza LGA of Borno State. Twenty-four per cent of the arrivals were from Bama LGA in Borno State while 66 percent were from Yola South LGA in Adamawa State.

**Askira Uba:** Two hundred and eighty (280) new arrivals were recorded in Askira Uba LGA of Borno State. The arrivals included 104 individuals from Guyuk LGA of Adamawa State, 77 individuals from within same Askira Uba LGA of Borno State, 35 individuals from Gombi LGA of Adamawa State, 29 individuals from Girei LGA of Adamawa State, 27 individuals from Maiha LGA of Adamawa and 8 individuals from Akko LGA in Gombe State. Sixty-six per cent were as a result of improved security while 34 per cent were as a result of seasonal farming.

Table 1. Details of new arrivals by locations of departure — only movements with at least 19 persons are listed below

Arrival Location			Location of Departure			NO. OF INDIVIDUALS
STATE	LGA	WARD	STATE	LGA	WARD	
ADAMAWA	DEMSA	NASSARAWO	ADAMAWA	LAMURDE	LAFIYA	25
	GOMBI	GOMBI SOUTH	ADAMAWA	GUYUK	DUMNA	68
	HONG	GARAHA	BORNO	ASKIRA/UBA	UDA/UVU	26
	LAMURDE	LAMURDE	ADAMAWA	GUYUK	DUMNA	212
		RIGANGE	ADAMAWA	GUYUK	DUMNA	40
		WADUKU	ADAMAWA	GUYUK	DUMNA	272
	MAIHA	KONKOL	ADAMAWA	MUBI SOUTH	LAMORDE	32
		SORAU A	ADAMAWA	FUFORE	BETI	19
		SORAU A	ADAMAWA	MADAGALI	BEBEL	22
		SORAU A	BORNO	ASKIRA/UBA	CHUL/RUMIRGO	27
	MICHIKA	MADZI	ADAMAWA	MICHIKA	ZAH	28
		MICHIKA I	ADAMAWA	DEMSA	DEMSA	33
	MUBI SOUTH	GUDE	BORNO	GWOZA	GWOZA TOWN GADAMAYO	22
		MUJARA	ADAMAWA	MADAGALI	HYAMBULA	33
	NUMAN	NUMAN II	ADAMAWA	GUYUK	DUMNA	31
SONG	DUMNE	BORNO	ASKIRA/UBA	UDA/UVU	104	
	SONG GARI	ADAMAWA	YOLA SOUTH	NAMTARI	41	
	SONG GARI	ADAMAWA	GUYUK	DUMNA	40	
BORNO	ASKIRA/UBA	CHUL/RUMIRGO	ADAMAWA	GOMBI	GOMBI SOUTH	35
		LASSA	ADAMAWA	GIREI	GIREI I	29
		NGOHI	BORNO	ASKIRA/UBA	WAMDEO/GIWI	38
	BAMA	BUDUWA/BULA CHIRABE	BORNO	BAMA	ANDARA/AJIRI/WULBA	751
		SHEHURI/HAUSARI/MAIRI	BORNO	BAMA	SABSABWA/SOYE/BULONGU	129
		SHEHURI/HAUSARI/MAIRI	BORNO	BAMA	DIPCHARI/JERE/DAR-JAMAL/KOTEMBE	792
		SHEHURI/HAUSARI/MAIRI	BORNO	BAMA	ANDARA/AJIRI/WULBA	38
	GWOZA	GWOZA WAKANE/BULABULIN	BORNO	GWOZA	NGOSHE	25
		GWOZA WAKANE/BULABULIN	BORNO	GWOZA	HAMBAGDALIMAN KARA/NEW SETTLEMENT	83
		PULKA/BOKKO	BORNO	BAMA	SABSABWA/SOYE/BULONGU	80
		PULKA/BOKKO	BORNO	BAMA	SHEHURI/HAUSARI/MAIRI	37
		PULKA/BOKKO	BORNO	GWOZA	DURE/WALA/WARABE	118
		PULKA/BOKKO	BORNO	GWOZA	GAVVA/AGAPALWA	39
	KALA BALGE	RANN A	CAMEROON	MARWA	MAKARI	89
	MONGUNO	MONGUNO	NIGER	DIFFA	CHETIMARI	37
MONGUNO		NIGER	DIFFA	MAINE SOROA	89	

### NEW ARRIVAL MALNUTRITION SCREENING SUMMARY (CHILDREN 6 — 59 MONTHS)

Between 20 and 26 June 2022, an exhaustive nutrition screening using Mid-Upper Arm Circumference (MUAC) and oedema for acute malnutrition was conducted by sector partners for 603 children of 6-59 months. Of the 603 children screened, the MUAC reading indicated that 48 children were recorded in the red category, 57 children in the yellow category and 498 children in the green category. No case of oedema was reported in the six LGAs assessed.

Among the 603 children screened, 113 children arrived from neighbouring countries (30 in Kala Balge LGA, 39 in Mobbar LGA, and 44 in Monguno LGA). All children found with acute malnutrition have been admitted in the treatment programme.

Please note, the data presented above are not surveillance results and should be interpreted with caution.

#### Breakdown of MUAC reading by category

LGA	MUAC Category						Total
	Green (>12.5cm)		Yellow (11.5cm - 12.5cm)		Red (<11.5cm)		
	Inaccessible	Accessible	Inaccessible	Accessible	Inaccessible	Accessible	
Bama	332	0	43	0	34	0	409
Gwoza	46	6	7	2	11	1	73
Kala/Balge	0	31	0	1	0	1	33
Mobbar	2	38	0	1	0	0	41
Monguno	0	42	0	1	0	1	44
Ngala	1	0	2	0	0	0	3
Total	381	117	52	5	45	3	603

■ Nourished
 ■ Moderate Acute Malnutrition (MAM)
 ■ Severe Acute Malnutrition (SAM)

When quoting, paraphrasing, or in any way using the information mentioned in this report, the source needs to be stated appropriately as follows: "Source: Displacement Tracking Matrix (DTM) of the International Organization for Migration, Nigeria Mission, June 2022".

For more information or to report an alert, please contact: DTM Nigeria: [iomnigeriadtm@iom.int](mailto:iomnigeriadtm@iom.int)

<https://displacement.iom.int/nigeria> ; <https://dtm.iom.int/nigeria>