

EMERGENCY EVENT TRACKING

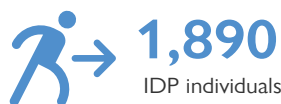
Data collection: 12 May 2022

Conflict



The DTM Emergency Event Tracking (EET) is deployed to track sudden displacement and population movements, provide more frequent updates on the scale of displacement, and quantify the affected population when needed. As a subcomponent of the new Mobility Tracking methodology in Sudan (Round Three), and activated on a need basis, EET utilises a broad network of key informants to capture best estimates of the affected population presence per location – a useful tool for humanitarian response planning and design.

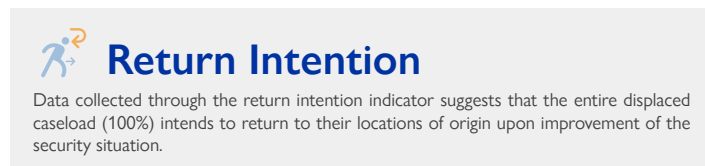
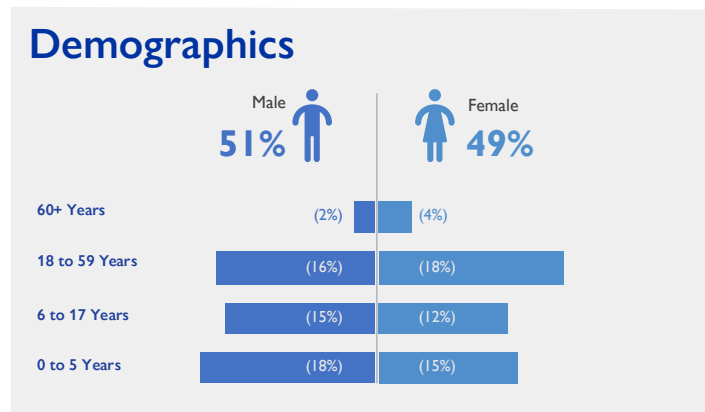
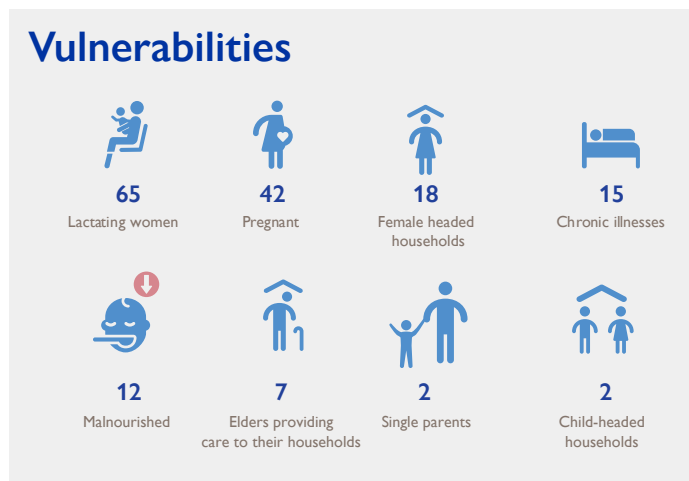
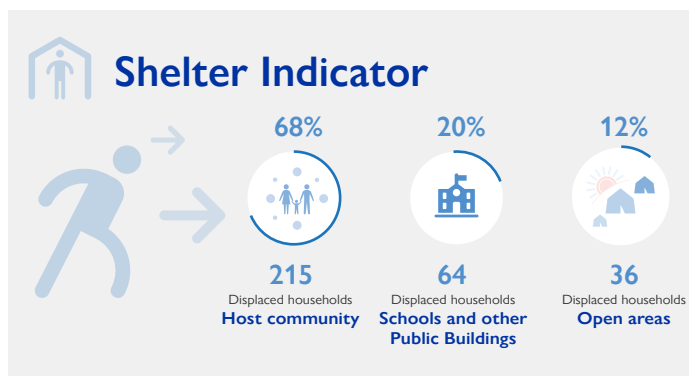
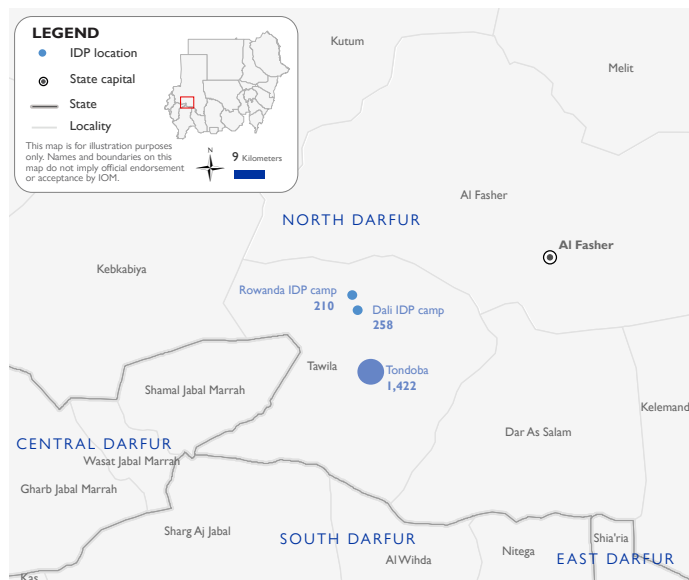
## Event Overview



DTM teams activated EET to monitor the displacement of individuals between the Sudanese Armed Forces (SAF), and an Arab armed group in Tunjur village, of Tawila locality, North Darfur following an ambush by the Arab armed group taking place between Tawila Town and Tunjur village on 4 May 2022.

The first EET update estimates a total number of 1,890 individuals (315 households) currently seeking shelter in Tondoba village (75%), Dali IDP Camp (14%), and Rowanda A (11%) in Tawila locality, North Darfur. The IDP caseload was originally displaced from Massala (48%), Garbos (28%), and Khazan Tunjur (24%) villages in Tawila locality, North Darfur. DTM field teams have confirmed, upon reverification, that no individuals were killed, and no individuals were injured. Field teams also reported 14 cases of lost stolen good/cattle/and livestock. All displaced individuals are Sudanese nationals.

At least 163 cases of additional vulnerabilities in need of assistance and support were identified by key informants through DTM's Protection indicator. Additionally, DTM Sudan estimates that there are approximately 284 persons with disabilities among the IDP caseload.\* Based on a ranking scale, the three priority needs across the caseload are Emergency Shelter, Non-Food Items, and Food.



#### IOM DISCLAIMER

The opinions expressed in the report are those of the authors and do not necessarily reflect the views of the International Organization for Migration (IOM). The designations employed and the presentation of material throughout the report do not imply the expression of any opinion whatsoever on the part of IOM concerning the legal status of any country, territory, city or area, or of its authorities, or concerning its frontiers or boundaries.

IOM is committed to the principle that humane and orderly migration benefits migrants and society. As an intergovernmental organization, IOM acts with its partners in the international community to: assist in the meeting of operational challenges of migration; advance understanding of migration issues; encourage social and economic development through migration; and uphold the human dignity and well-being of migrants.

\* DTM Sudan adopts the WHO global estimate that approximately 15% of the total population are persons with disabilities (PwDs).