

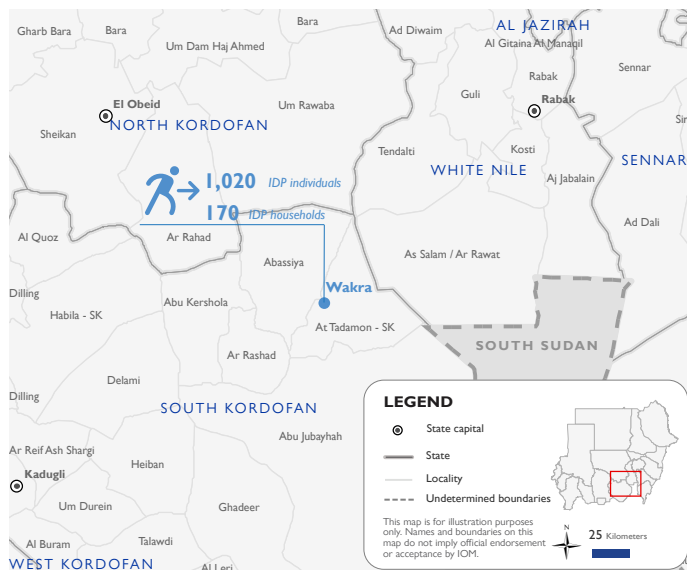
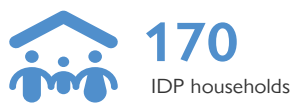
EMERGENCY EVENT TRACKING

Data collection: 11 May 2022

Flooding

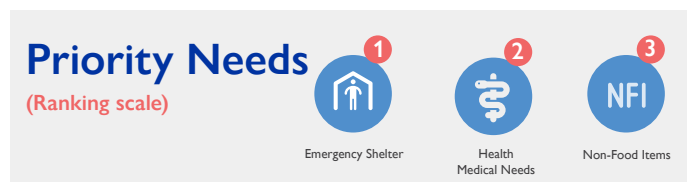
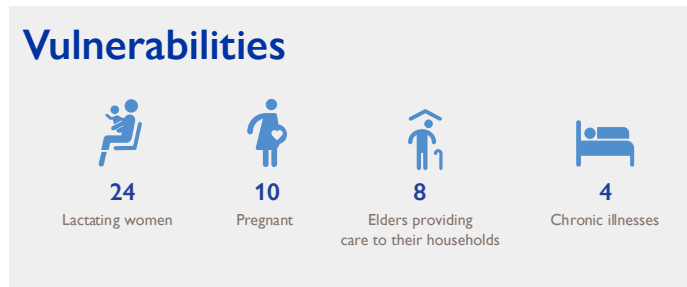
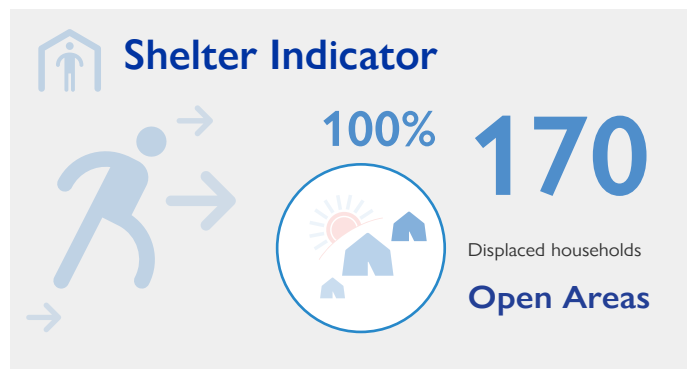
The DTM Emergency Event Tracking (EET) is deployed to track sudden displacement and population movements, provide more frequent updates on the scale of displacement, and quantify the affected population when needed. As a subcomponent of the new Mobility Tracking methodology in Sudan ([Round Three](#)), and activated on a need basis, EET utilises a broad network of key informants to capture best estimates of the affected population presence per location – a useful tool for humanitarian response planning and design.

Event Overview



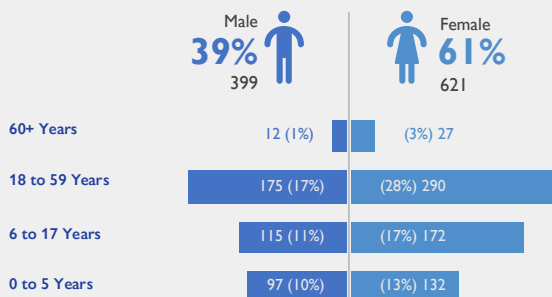
DTM Sudan activated EET to monitor the displacement of individuals affected by heavy rains in South Kordofan, which led to flooding in Wakra, in At Tadamon locality, South Kordofan on 11 May 2022. The first EET update estimates a total number of 1,020 IDPs (170 households) currently seeking shelter in Hai Al Wehda village (59%) and Hai Alkukah village (41%) in Wakra, in At Tadamon locality, South Kordofan. The IDP caseload was originally displaced from various locations across the same villages.

Field teams indicate there has been no injuries and no deaths. All displaced individuals are Sudanese nationals. At least 46 cases of additional vulnerabilities in need of assistance and support were identified by key informants through DTM's protection indicator. Additionally, DTM Sudan estimates that there are approximately 153 persons with disabilities among the IDP caseload.* Based on a ranking scale, the three priority needs across the caseload are Emergency Shelter; Health (Medical needs) and Non-Food Items.



IOM DISCLAIMER
The opinions expressed in the report are those of the authors and do not necessarily reflect the views of the International Organization for Migration (IOM). The designations employed and the presentation of material throughout the report do not imply the expression of any opinion whatsoever on the part of IOM concerning the legal status of any country, territory, city or area, or of its authorities, or concerning its frontiers or boundaries.
IOM is committed to the principle that humane and orderly migration benefits migrants and society. As an intergovernmental organization, IOM acts with its partners in the international community to: assist in the meeting of operational challenges of migration; advance understanding of migration issues; encourage social and economic development through migration; and uphold the human dignity and well-being of migrants.

Demographics



Return Intention

Data collected through the return intention indicator suggests that 100% of IDPs intend to return to their initial locations upon improvement of the security situation.

* DTM Sudan adopts the WHO global estimate that approximately 15% of the total population are persons with disabilities (PwDs).